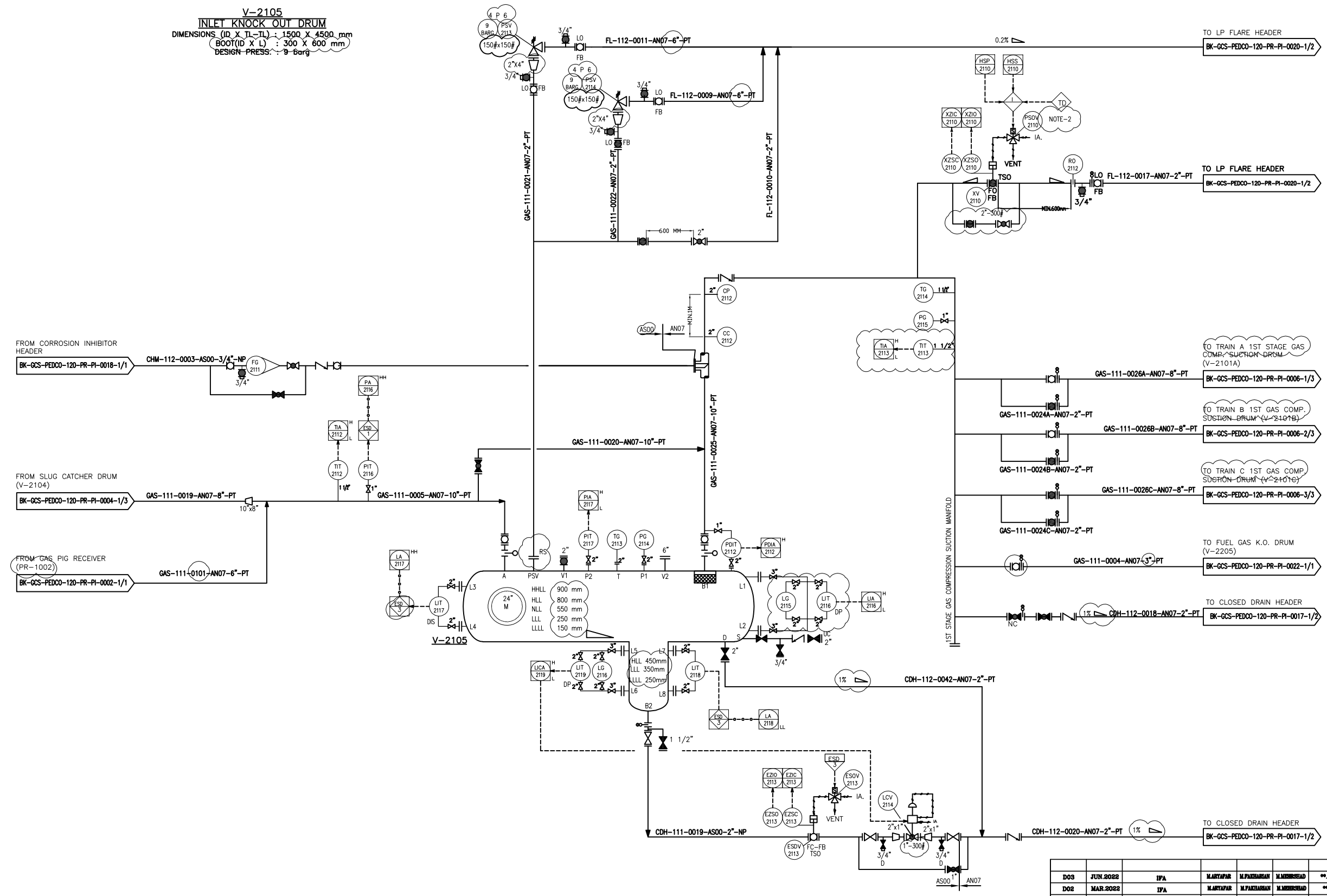


**V-2105**  
**INLET KNOCK OUT DRUM**  
 DIMENSIONS (ID X TL-TL) : 1500 X 4500 mm  
 BOOT (ID X L) : 300 X 600 mm  
 DESIGN PRESS. : 9 barg



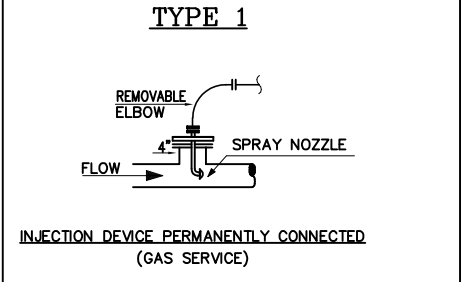
**NOTES**

- 1- DELETED.
- 2- ACTIVATION BY DCS FOR DEPRESSURIZING OF LINE, BY ATOMATIC LOGIC WITH 15 MIN TIME DELAY OF ESD OR WITH OPERATOR COMMAND.

**LEGEND**

REFERENCE DRAWING	DRG. No.
Process Flow Diagram	BK-GCS-PEDCO-120-PR-PF-0001
Symbol & Legend For PFD and P&ID	BK-GCS-PEDCO-120-PR-PI-0001

**KEY PLAN**



REV.	DATE	DESCRIPTION	BY	DATE	BY	DATE
D03	JUN.2022	IFA	MARYAFAR	M.PAKBARIAN	M.MERESHAD	00.00
D02	MAR.2022	IFA	MARYAFAR	M.PAKBARIAN	M.MERESHAD	00.00
D01	JAN.2022	IFA	MARYAFAR	M.PAKBARIAN	M.MERESHAD	00.00
D00	SEP.2021	IPC	MARYAFAR	M.PAKBARIAN	M.MERESHAD	00.00
REV.	DATE	P.O.I.S	PREP.	CHEK.	APP.	AUT.

PROJECT NAME: BINAK OILFIELD DEVELOPMENT/SURFACE FACILITIES GAS COMPRESSOR STATION  
 PROJECT NO.: 971020  
 EPC CONTRACTOR: HIRGAN ENERGY - DESIGN & INSPECTION COMPANIES  
 EPD/EPC CONTRACTOR (GC): PETROIRAN DEVELOPMENT COMPANY

THE ORIGINAL AND ALL COPIES OF THIS DRAWING TOGETHER WITH THE COPYRIGHT THEREIN ARE THE SOLE PROPERTY OF N.I.S.O.C./ FIELDS  
 BINAK OILFIELD DEVELOPMENT SURFACE FACILITIES GAS COMPRESSOR STATION  
 DATE: SCALE: DRAWING BY: CHECKED BY: PROJECT ENG.

DRAWING TITLE: P&ID - Gas Compression Inlet Knock Out Drum  
 (VENDOR TITLE BLOCK)\*\*

SCALE	SIZE	DRAWING NO.	SHEET NO.	REV.	BUDGET REF.	LOCATION	SIZE	CLASS	SERIAL NO.	SHEET	REVISION
NS	A3	BK-GCS-PEDCO-120-PR-PI-0006	1 OF 1	D03	353-073-9184	F	2	A	708783	1 OF 1	D03

NO CONSTRUCTION PERMITTED UNLESS DRAWING APPROVED  
 APPROVED FOR CONSTRUCTION BY: DATE: