

BLOCK DIAGRAM FOR PROCESS CCTV

NOTES

1- EXACT LOCATION OF CCTV EQUIPMENT SHALL BE FINALLEZ IN DETAIL LAYOUT.

LEGEND

6 CORE FIBER OPTIC CABLE SINGLE MODE, ARMORED

P.T.Z

EX

}

OUTDOOR EX d IP PTZ CAMERA

CJB

EX

OUTDOOR EX CCTV JUNCTION BOX

CAT 6 /SFTP CABLE

3X2.5 POWER CABLE-CU/XLPE

3X4 POWER CABLE-CU/XLPE/ARMOURED

REFERENCE DRAWING

DRG. No.

Telecom Design Criteria

BK-GNRAI-PEDCO-120-TE-DC-0001

Process CCTV Equipment Layout For Area

BK-GCS-PEDCO-120-IN-PY-0007

KEY PLAN

REV.

DESCRIPTION

BY

DATE

BY

DATE

CHECKED

REV. APPR.

اسم و کاپیه نسخ این نقشه و حق اقتباس متعلق به شرکت ملی مناطق نفت خیز جنوب میباشد.

THE ORIGINAL AND ALL COPIES OF THIS DRAWING TOGETHER WITH THE COPYRIGHT THEREIN ARE THE SOLE PROPERTY OF N.I.S.O.C. / FIELDS

**BINAK OILFIELD DEVELOPMENT
SURFACE FACILITIES
GAS COMPRESSOR STATION**

DATE

SCALE

DRAWING BY

CHECKED BY

PROJECT ENG.

NO CONSTRUCTION PERMITTED UNLESS DRAWING APPROVED

APPROVED FOR CONSTRUCTION

BY:

DATE:

BUDGET REF.

LOCATION

SIZE

CLASS

SERIAL NO.

SHEET

REVISION

053-073-9184

F

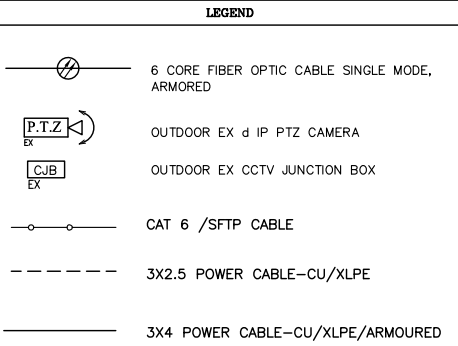
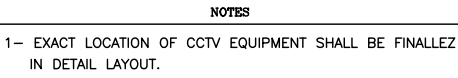
2

T

708962

1 OF 2

D00



REFERENCE DRAWING	DRG. No.
Telecom Design Criteria	BK-GNRL-PEDCO-120-TE-DC-000
Process CCTV Equipment Layout For Area	BK-GCS-PEDCO-120-IN-PY-0007

KEY PLAN

[illegible]