

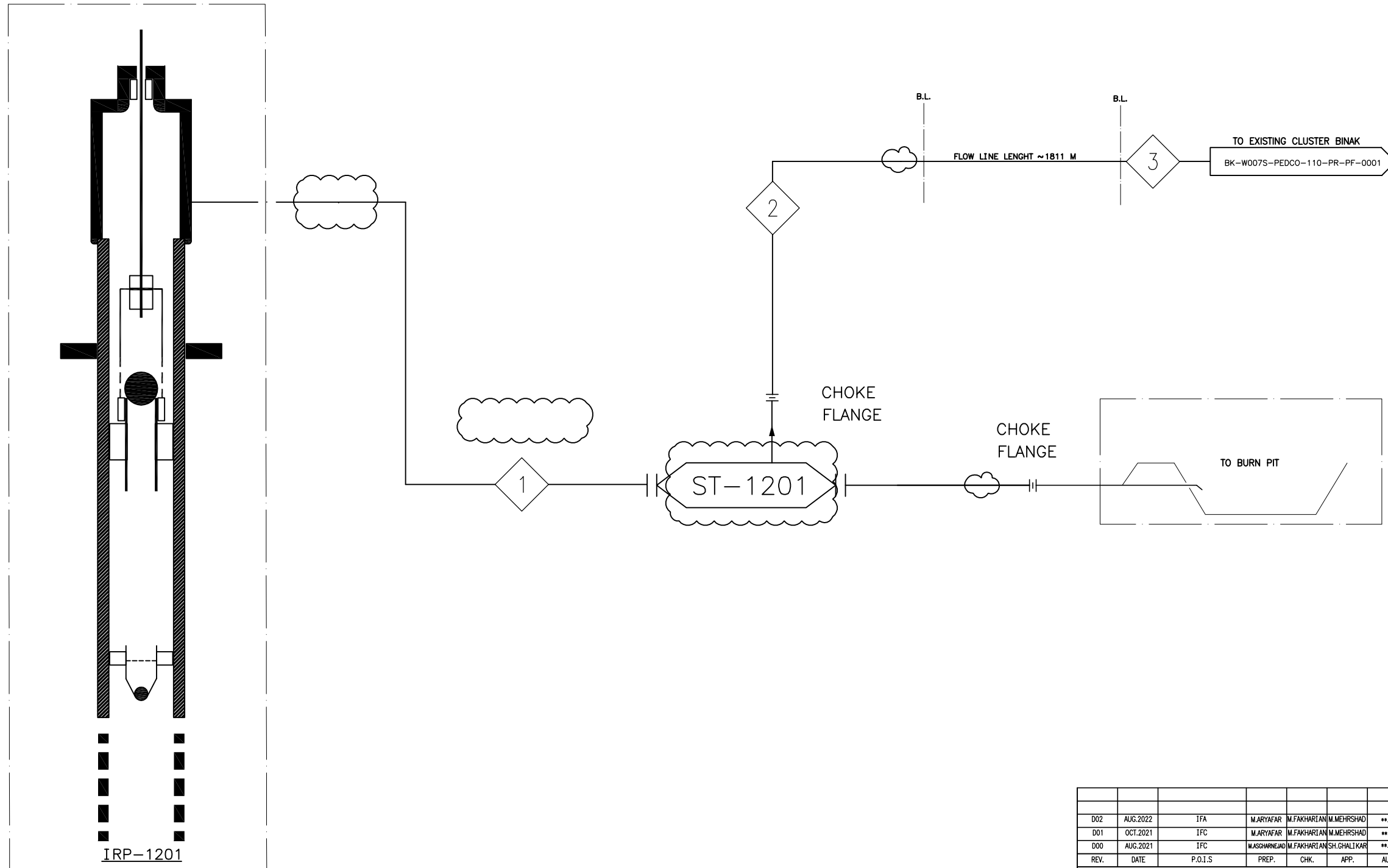
BINAK PRODUCTION WELL



STONE TRAP

IRP-1201

SUCKER ROD PUMP (IRP)
(BY VENDOR)




W007S

WELLHEAD
(SUB SURFACE SCOPE OF WORK)

NOTES

1-DELETED.

2-DELETED.

D02: 

LEGEND

REFERENCE DRAWING	DRG. No.
SYMBOL & LEGEND FOR PFD AND P&ID	BK-SSGRL-PEDCO-110-PR-PI-0001
PROCESS BASIS OF DESIGN	BK-GNRIAL-PEDCO-000-PR-DB-0001

KEY PLAN

[illegible]




Name	W007S-SUMMER			W007S-WINTER		
Stream No.	1	2	3	1	2	3
Vapour Fraction	0.05	0.07	0.06	0.05	0.07	0.06
Temperature [C]	80.00	79.48	41.77	80.00	79.65	22.21
Pressure [barg]	43.80	16.50	12.78	43.80	17.11	12.78
Molecular Weight	39.09	39.09	39.09	39.09	39.09	39.09
Molar Flow [MMSCFD]	5.96	5.96	5.96	5.96	5.96	5.96
Mass Flow [kg/h]	11614.6	11614.6	11614.6	11614.6	11614.6	11614.6
Liq Vol Flow @Std Cond [barrel/day]	1811.1	1811.1	1811.1	1811.1	1811.1	1811.1
Mass Density [kg/m3]	554.02	253.33	251.55	554.02	261.60	283.94
Master Comp Mole Frac (N2)	0.0001	0.0001	0.0001	0.0001	0.0001	0.0001
Master Comp Mole Frac (CO2)	0.0029	0.0029	0.0029	0.0029	0.0029	0.0029
Master Comp Mole Frac (H2S)	0.0005	0.0005	0.0005	0.0005	0.0005	0.0005
Master Comp Mole Frac (Methane)	0.0453	0.0453	0.0453	0.0453	0.0453	0.0453
Master Comp Mole Frac (Ethane)	0.0157	0.0157	0.0157	0.0157	0.0157	0.0157
Master Comp Mole Frac (Propane)	0.0127	0.0127	0.0127	0.0127	0.0127	0.0127
Master Comp Mole Frac (i-Butane)	0.0024	0.0024	0.0024	0.0024	0.0024	0.0024
Master Comp Mole Frac (n-Butane)	0.0067	0.0067	0.0067	0.0067	0.0067	0.0067
Master Comp Mole Frac (i-Pentane)	0.0022	0.0022	0.0022	0.0022	0.0022	0.0022
Master Comp Mole Frac (n-Pentane)	0.0022	0.0022	0.0022	0.0022	0.0022	0.0022
Master Comp Mole Frac (n-Hexane)	0.0088	0.0088	0.0088	0.0088	0.0088	0.0088
Master Comp Mole Frac (n-Heptane)	0.0100	0.0100	0.0100	0.0100	0.0100	0.0100
Master Comp Mole Frac (n-Octane)	0.0061	0.0061	0.0061	0.0061	0.0061	0.0061
Master Comp Mole Frac (n-Nonane)	0.0053	0.0053	0.0053	0.0053	0.0053	0.0053
Master Comp Mole Frac (n-Decane)	0.0049	0.0049	0.0049	0.0049	0.0049	0.0049
Master Comp Mole Frac (n-C11)	0.0042	0.0042	0.0042	0.0042	0.0042	0.0042
Master Comp Mole Frac (H2O)	0.8390	0.8390	0.8390	0.8390	0.8390	0.8390
Master Comp Mole Frac (C12+_1*)	0.0311	0.0311	0.0311	0.0311	0.0311	0.0311

NOTES

D02:

LEGEND

REFERENCE DRAWING	DRG. No.
SYMBOL & LEGEND FOR PFD AND P&ID	BK-SSGRL-PEDCO-110-PR-P1-0001
PROCESS BASIS OF DESIGN	BK-GNRL-PEDCO-000-PR-DB-0001

D02	AUG.2022	IFA	M.ARYAFAR	M.FAKHARIAN	M.MEHRSHAD	** **	000	0000000000	00.00	000.0000	00.00	000.0000																
D01	OCT.2021	IFC	M.ARYAFAR	M.FAKHARIAN	M.MEHRSHAD	** **	REV.	DESCRIPTION	BY	DATE	BY	DATE																
D00	AUG.2021	IFC	M.ASHWANEJAD	M.FAKHARIAN	SH.GHALI KAR	** **			CHECKED		REV.	APPR.																
REV.	DATE	P.O.I.S	PREP.	CHK.	APP.	AUT.	اصل و کلیه نسخ این نقشه و حق اقبالی متعلق به شرکت ملی مناطق نفت خیز جنوب میباشد.																					
PROJECT NAME: BINAK OILFIELD DEVELOPMENT/SUB-SURFACE WORK PACKAGES W007S WHF & EXTENSION OF BINAK B/C																												
PROJECT NO.: 971020																												
EPC CONTRACTOR:			EPD/EPC CONTRACTOR (GC):																									
<div><div></div><div></div><div>HURGAN ENERGY - DESIGN & INSPECTION COMPANIES</div></div>			<div><div></div><div>PETROIRAN DEVELOPMENT COMPANY</div></div>																									
DRAWING TITLE: PROCESS FLOW DIAGRAM - W007S																												
NO CONSTRUCTION PERMITTED UNLESS DRAWING APPROVED																												
APPROVED FOR CONSTRUCTION																												
BY: DATE:																												
SCALE	SIZE	DRAWING NO.		SHEET NO.	REV.	BUDGET REF.	LOCATION	SIZE	CLASS	SERIAL NO.	SHEET	REVISION																
NS	A3	BK-W007S-PEDCO-110-PR-PF-0002		2 OF 2	D02	063-073-9184	F	2	A	707923	2 OF 2	D02																

(VENDOR TITLE BLOCK)**