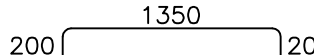
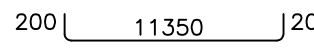
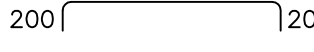
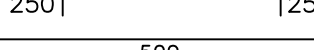
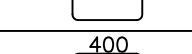
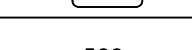






BAR BENDING SCHEDULE							
Pos	Spec.	Shape	L/A	No.	T10	T16	T20
1	T16		1.750	192		336.00	
2	T16		11.75	12		141.00	
3	T16		6.750	18		121.50	
4	T20		2.40	72			172.80
5	T10		2.200	98	215.60		
6	T10		1.80	126	226.80		
7	T10		0.70	172	112.00		
TOTAL LENGTH OR AREA (m/m2)					554.40	598.50	172.80
UNIT WEIGHT (Kg)					0.617	1.58	2.47
WEIGHTH (Kg)					342.06	945.63	426.80
GRAND TOTAL (Kg)					1715 ~ 1800		

- ### NOTES
- 1) ALL ELEVATIONS AND COORDINATES ARE IN "m" AND DIMENSIONS ARE IN "mm" UNLESS OTHERWISE NOTED.
 - 2) ALL DIMENSIONS AND ELEVATIONS SHALL BE CHECKED BY THE CONTRACTOR PRIOR TO CONSTRUCTION.
 - 3) ACCORDING TO THE SPECIFICATION OF CONCRETE WORKS:
"BK-CNR-PECO-000-SP-00P-001" 28 DAYS CHARACTERISTIC COMPRESSIVE STRENGTH OF M30 CONCRETE IS 25 MPa (ON CYLINDRICAL SPECIMEN)
"BK-CNR-PECO-000-SP-00P-001" 28 DAYS CHARACTERISTIC COMPRESSIVE STRENGTH OF LEAN CONCRETE IS 15 MPa (ON CYLINDRICAL SPECIMEN)
 - 4) ACCORDING TO THE SPECIFICATION OF CONCRETE WORKS:
"BK-CNR-PECO-000-SP-00P-001" 28 DAYS CHARACTERISTIC COMPRESSIVE STRENGTH OF LEAN CONCRETE IS 15 MPa (ON CYLINDRICAL SPECIMEN)
 - 5) CONCRETE COVER OVER BARS SHALL BE 75mm FOR FOUNDATION AND 50mm FOR CAST IN-SITU WALLS & PEDAESTALS.
 - 6) REINFORCING BARS SHALL BE S400 ACCORDING TO: ISIRI:3132 AND INCB93 WITH MINIMUM TENSILE YIELD STRENGTH 400 N/mm²
 - 7) THE FIRST HOOP OF THE BEAM, COLUMN OR PEDAESTAL SHALL BE LOCATED NOT MORE THAN 50mm FROM THE FACE OF FOUNDATION.
 - 8) REINFORCEMENT SHALL BE ADJUSTED LOCALLY TO SUIT THE RECESS OF ANCHOR BOLTS HOLES AND OTHER EMBEDDED MATERIALS.
 - 9) UNDERGROUND CONCRETE SHALL BE PROTECTED AND COVERED ACCORDING TO RELEVANT SPECIFICATION.
 - 10) PORTLAND CEMENT TYPE 2 SHALL BE USED FOR CONCRETE AND LEAN CONCRETE.
 - 11) FILL MATERIAL SHALL BE COMPACTED TO NOT LESS THAN 95% OF THE MAXIMUM DENSITY AS DETERMINED BY ASTM D-1557 (MODIFIED PROCTOR) METHOD.
 - 12) FILL MATERIAL SHALL BE COMPACTED TO NOT LESS THAN 95% OF THE MAXIMUM

$$\pm 0.00 = +11.15(\text{F.G.L})\text{MSL}$$

LEGEND

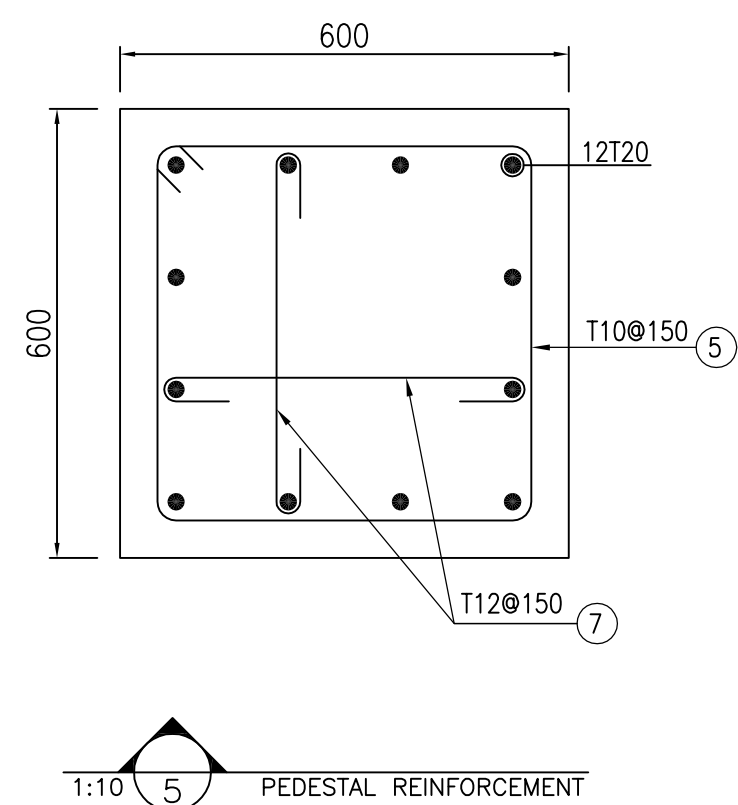
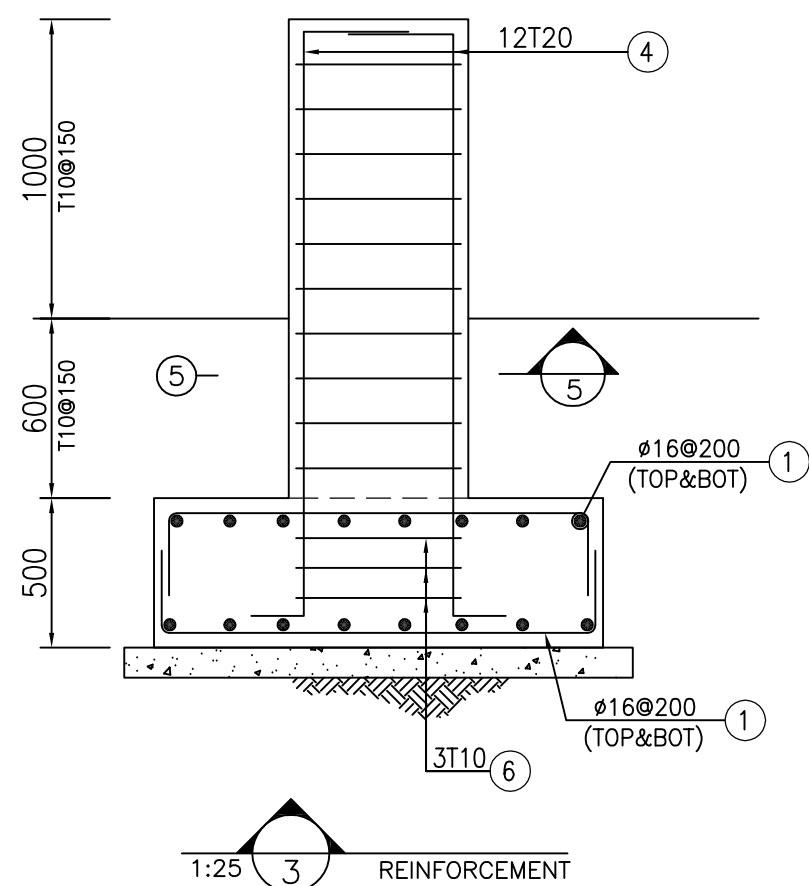
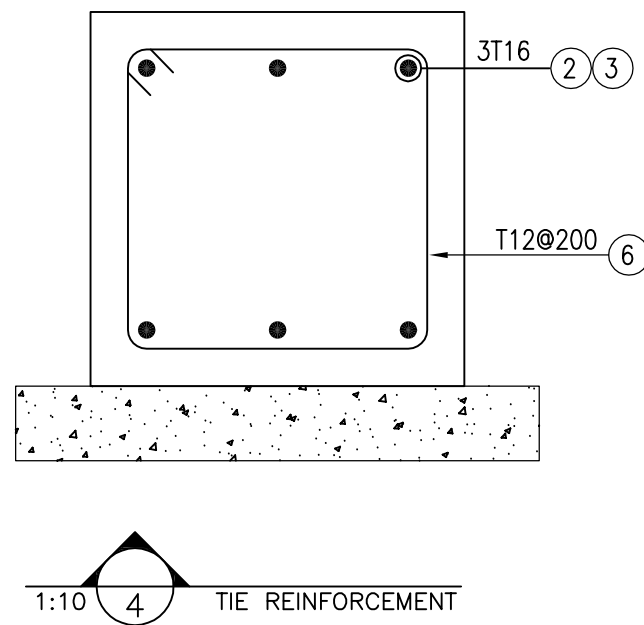
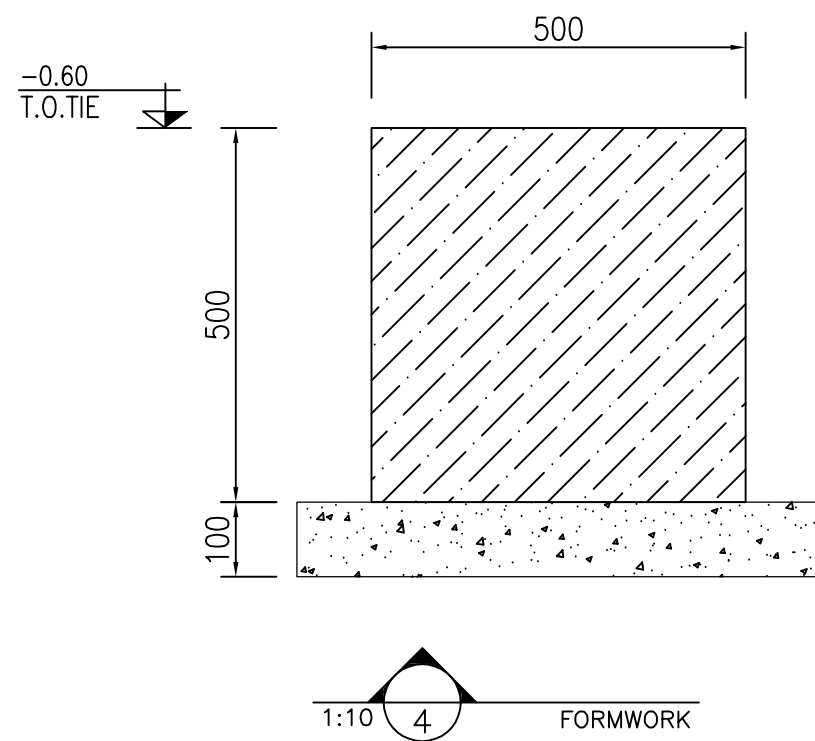
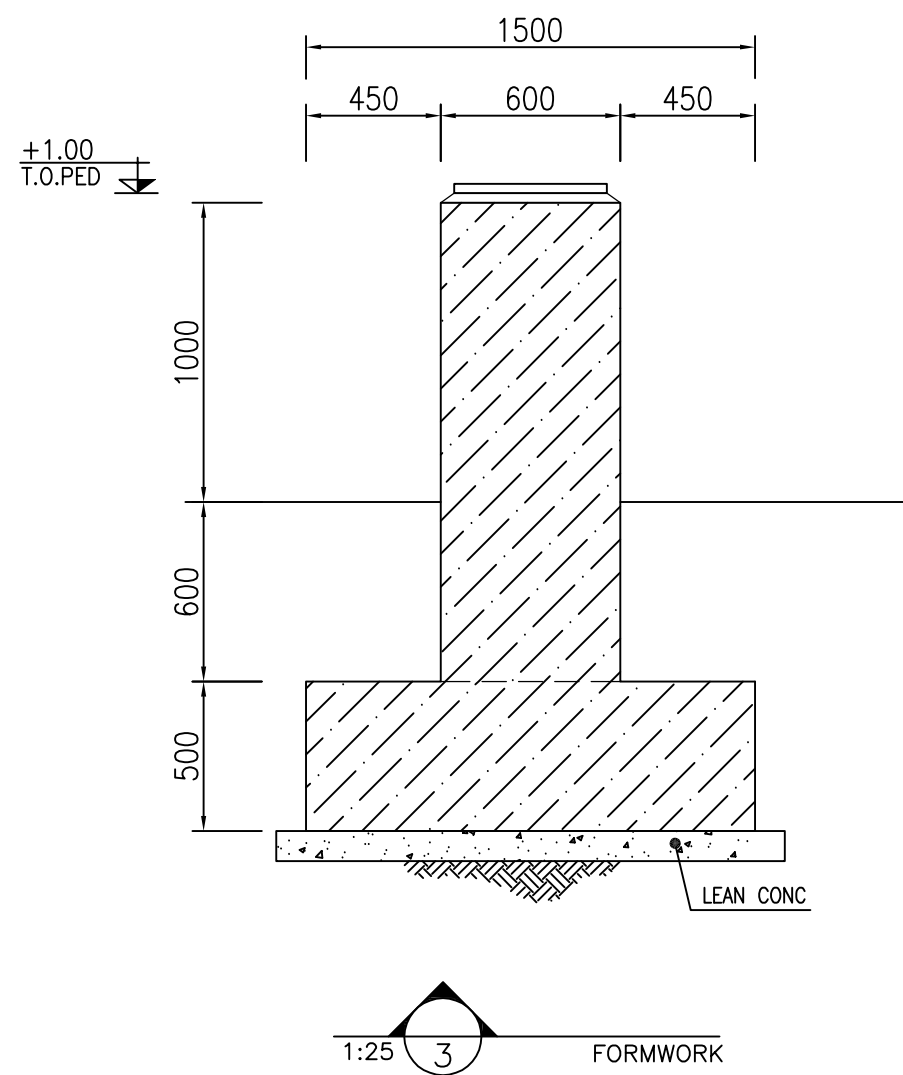
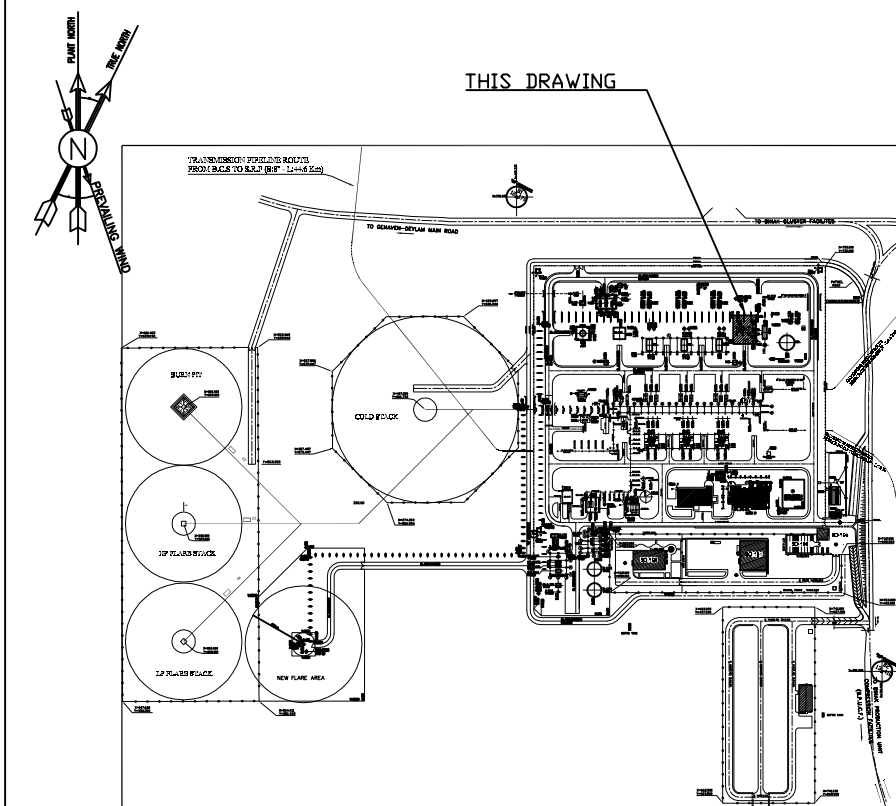
T.O.F : TOP OF FOUNDATION
T.O.TIE : TOP OF TIE BEAM
T.O.PED : TOP OF PEDESTAL

 REINFORCED CONCRETE
 LEAN CONCRETE
 GROUND

REFERENCE DRAWING

DRG. No.

KEY PLAN

[illegible]