



TELECOM TYPICAL INSTALLATION

DETAIL & NOTES

NOTES											
LEGEND											
REFERENCE DRAWING						DRG. No.					
TELECOM DESIGN CRITERIA						BK-GNRAL-PEDCO-000-TE-DC-0001					
KEY PLAN											

								***	*****	** **	*** ****	** **	*** ****					
D01	SEP.2021	IFI	H.SHAKIBA	M.PAKHARIAN	M.MEHRSHAD		REV.	DESCRIPTION	BY	DATE	BY	DATE						
D00	AUG.2021	IFI	M.ASCHAHNRIAN	M.PAKHARIAN	SH.GHALIKAR				CHECKED		REV.	APPR.						
REV.	DATE	P.O.I.S	PREP.	CHK.	APP.	AUT.	اسل و کلیه نسخ این نقشه و حق آذینامی متعلق به شرکت ملی مناطق نفت خیز جنوب میباشد. THE ORIGINAL AND ALL COPIES OF THIS DRAWING TOGETHER WITH THE COPYRIGHT THEREIN ARE THE SOLE PROPERTY OF N.I.S.O.C./ FIELDS											
PROJECT NAME:							BINAK OILFIELD DEVELOPMENT GENERAL											
PROJECT NO.:							971020											
EPC CONTRACTOR:							EPD/EPC CONTRACTOR:											
 HIRGAN ENERGY - DESIGN & INSPECTION COMPANIES							 PETROIRAN DEVELOPMENT COMPANY											
							BINAK OILFIELD DEVELOPMENT GENERAL											
DATE			SCALE		DRAWING BY		CHECKED BY		PROJECT ENG.									
(VENDOR TITLE BLOCK)**							DRAWING TITLE:											
							TELECOM TYPICAL INSTALLATION DETAIL & NOTES											
							NO CONSTRUCTION PERMITTED UNLESS DRAWING APPROVED											
							APPROVED FOR CONSTRUCTION				BY:		DATE:					
SCALE		SIZE		DRAWING NO.			SHEET NO.		REV.	BUDGET REF.		LOCATION	SIZE	CLASS	SERIAL NO.		SHEET	REVISION
NTS		A3		BK-GNRAL-PEDCO-000-TE-DW-0002			1 OF 22		D01	053-073-9184		F	2	T	707235		1 OF 22	D01

[illegible]



TELEPHONE STRUCTURE MOUNTING EXPLOSION PROOF

REFERENCE DRAWING	DRG. No.
TELECOM DESIGN CRITERIA	BK-GNRAL-PEDCO-000-TE-DC-0001

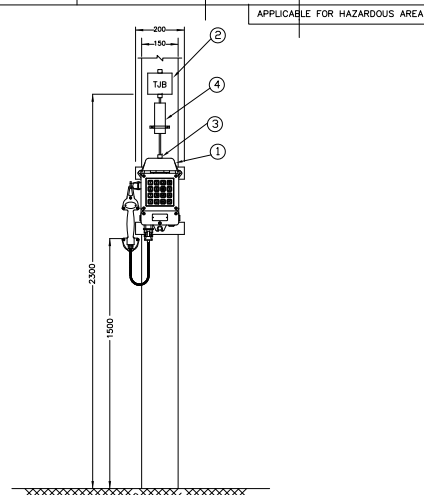
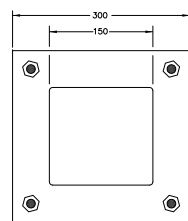
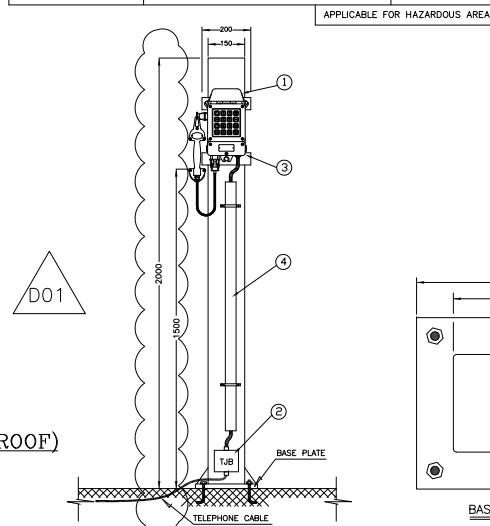
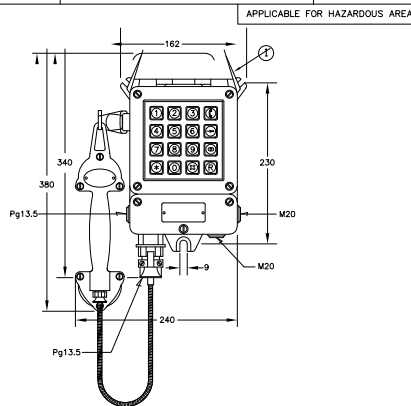
KEY PLAN

[illegible]

MATERIAL CODE	MATERIAL DESCRIPTION	REMARKS
①	TELEPHONE SET (EX)	
②		
③		
④		
⑤		

MATERIAL CODE	MATERIAL DESCRIPTION	REMARKS
①	TELEPHONE SET (EX)	
②	TELEPHONE JUNCTION BOX	
③	EXPLOSION PROOF CABLE GLAND	
④	R.G.S. CONDUIT	
⑤		

MATERIAL CODE	MATERIAL DESCRIPTION	REMARKS
①	TELEPHONE SET (EX)	
②	TELEPHONE JUNCTION BOX (EX.)	
③	EXPLOSION PROOF CABLE GLAND	
④	R.G.S. CONDUIT	
⑤		



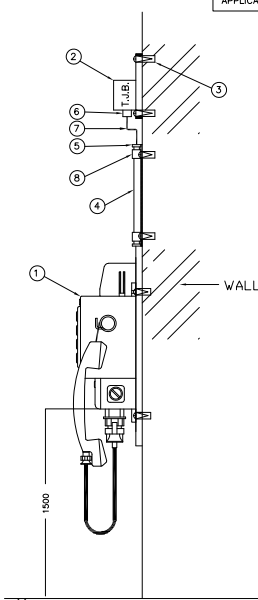
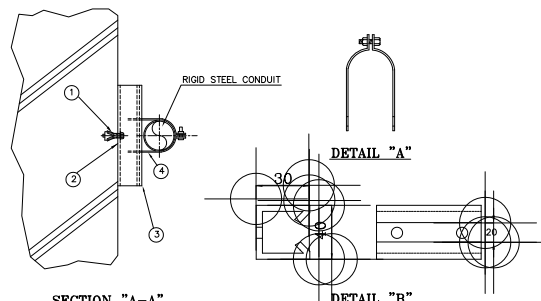
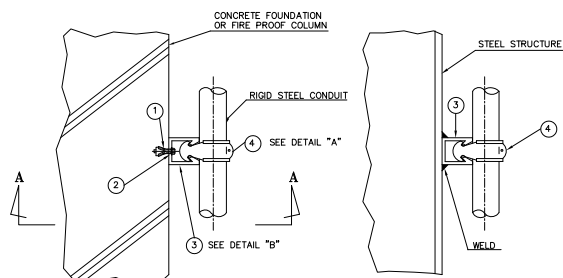
TELEPHONE OR HOTLINE HANDSET(EXPLOSION PROOF)

EX. TELEPHONE HANDSET (MTD ON POLE)

EX. TELEPHONE HANDSET (MTD ON STEEL STRUCTURE)

MATERIAL CODE	DESCRIPTION OR SPECIFICATION	REMARK
①	MASONRY ANCHOR WITHOUT STUD	
②	BOLT WITH 1-SPRING WASHER AND 1-FLAT WASHER SIZE: M8x15L FOR MASONRY ANCHOR	
③	UNISTRUT CHANNEL	
④	UNISTRUT CLAMP WITH BOLT AND NUT	
⑤		

MATERIAL CODE	MATERIAL DESCRIPTION	REMARKS
①	TELEPHONE SET	(N.T.S)
②	TELEPHONE JUNCTION BOX	
③	RAW. PLUG & BOLT	
④	R.G.S. CONDUIT	
⑤	END BUSHING	
⑥	CABLE GLAND	
⑦	CABLE	
⑧	CONDUIT SADDLE	



TELEPHONE SET (MTD. ON WALL)

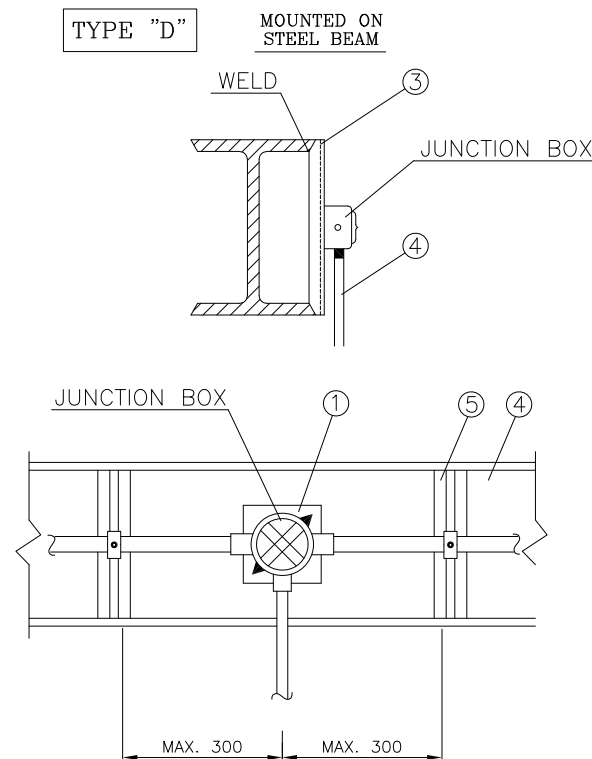
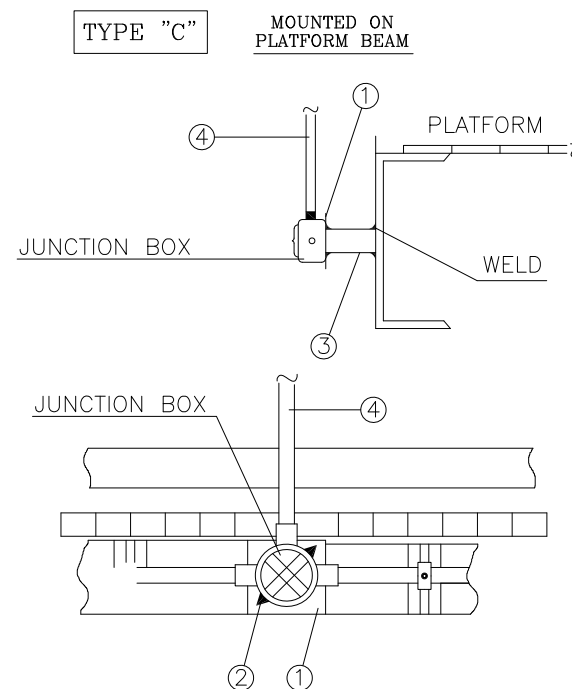
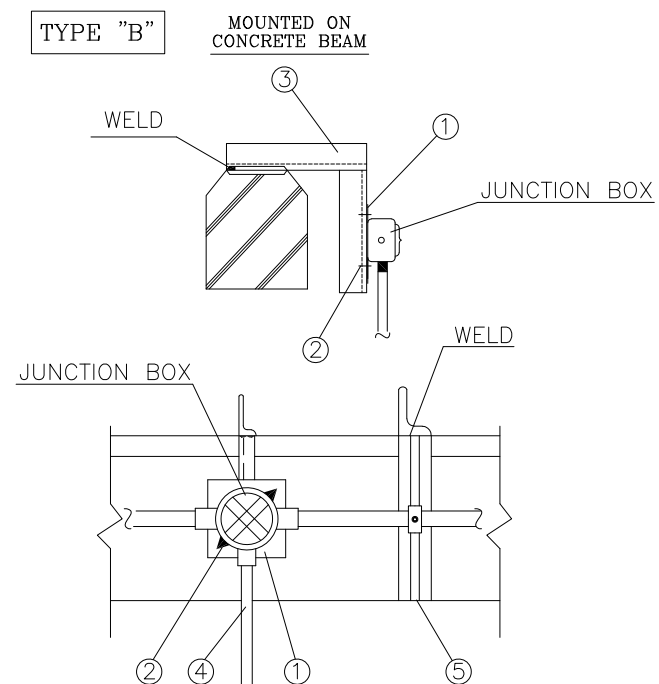
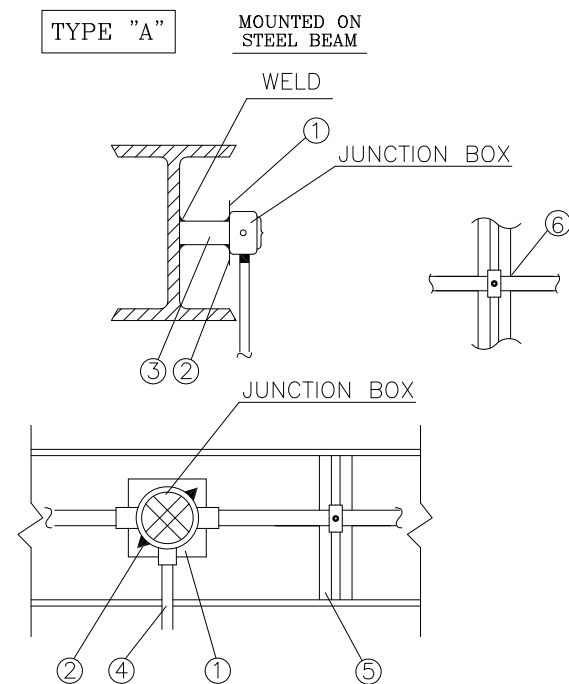
NOTES

NOTES
1- IN GENERAL, MAXIMUM SPACING OF CONDUIT SUPPORT SHALL BE 2000mm.

CONDUIT SUPPORT

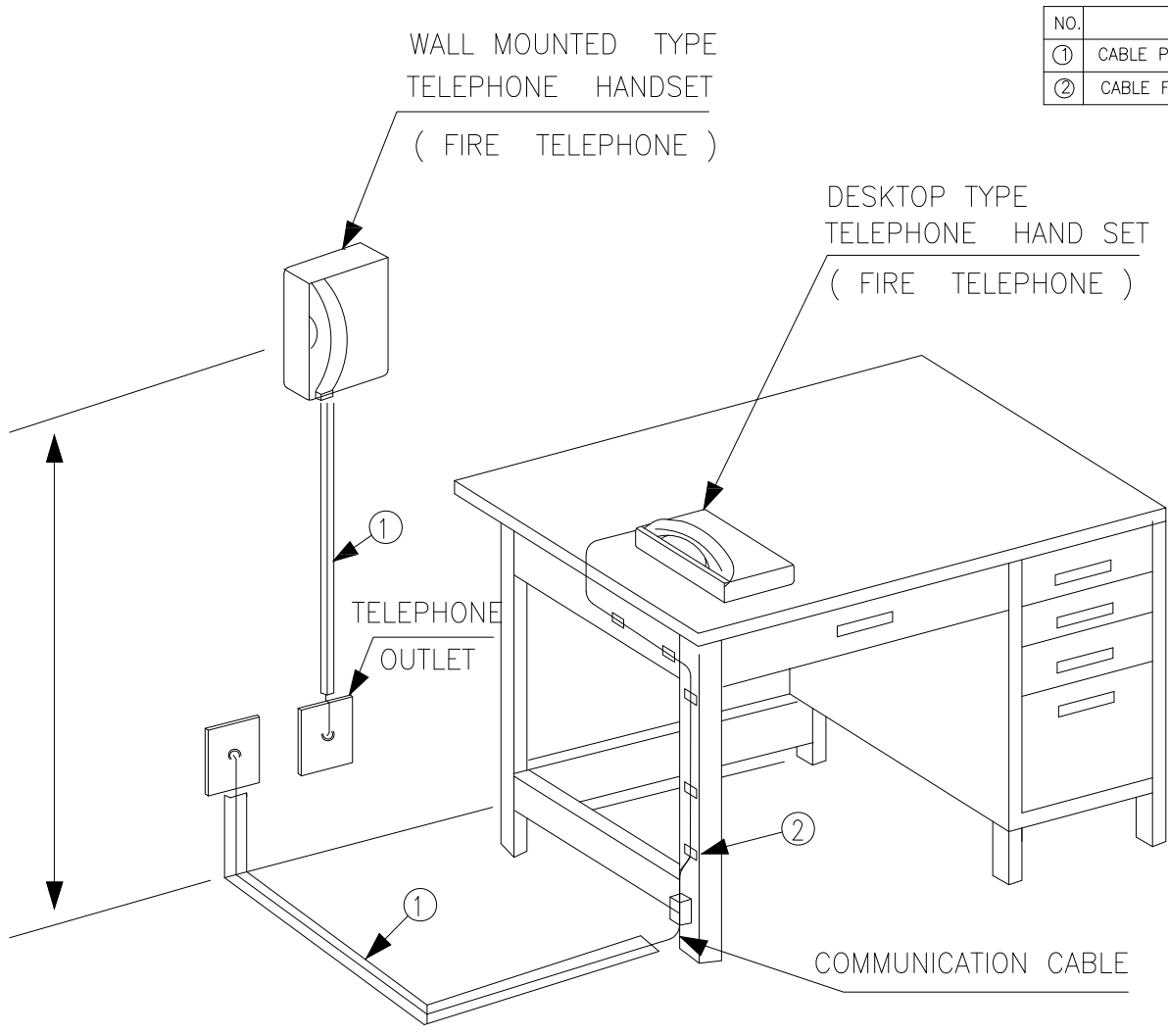
TELEPHONE SET & CONDUIT SUPPORT INSTALLATION DETAILS

[illegible]



No.	DESCRIPTION
	MOUNTING PLATE
	BOLT & NUT WITH 1-SPRING WASHER AND 2-FL WASHERS FOR JUNCTION BOX
	STEEL ANGLE (L=50x50x5t)
	CONDUIT GALV. STEEL , SEAMLESS
	UNISTRUT CHANNEL & CLAMP
	SEALING COMPONED MATERIAL (INSIDE THE PIPE)
	CLEAT FOR FASTENING PIPE TO UNISTRUT

[illegible]



NO.	DESCRIPTION	QTY.
①	CABLE PROTECTION MOLE (PVC)	AS REQ.
②	CABLE FIXING CLIP	AS REQ.

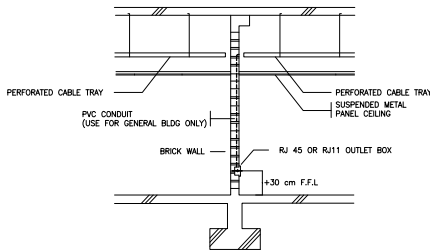
DESKTOP TELEPHONE OR HOTLINE TEL. (OFFICE)

NOTES	

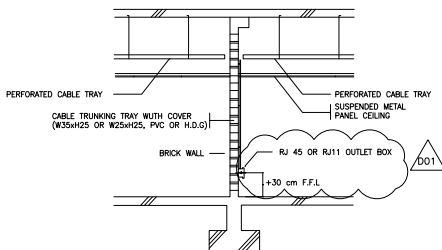
TELECOM SOCKETS

D01

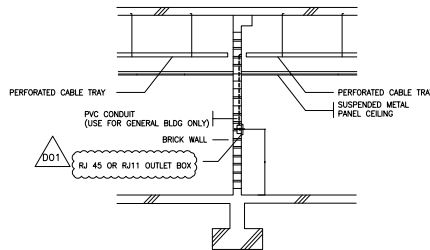
NOTES
1- Telephone and LAN Socket shall be installed on wall from 30 cm F.F.L For office area.
2- Telephone and LAN Socket shall be installed on wall from 120 cm F.F.L in kitchen..)



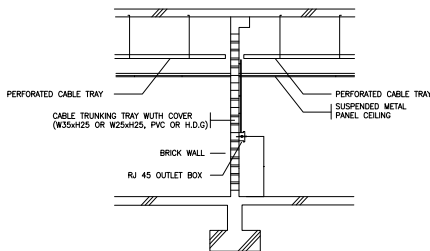
RJ 45 OUTLET FLUSH MOUNTED



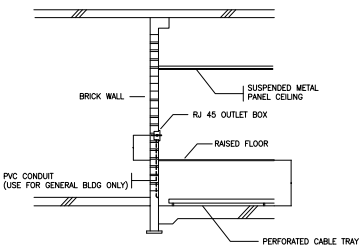
RJ 45 OUTLET SURFACE MOUNTED



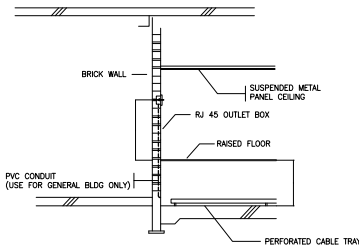
RJ 45/11 OUTLET FLUSH MOUNTED



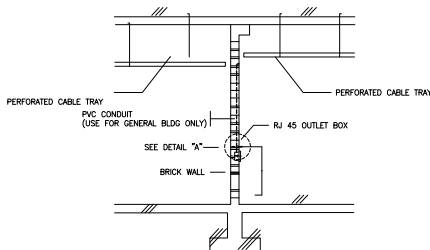
RJ 45 OUTLET SURFACE MOUNTED



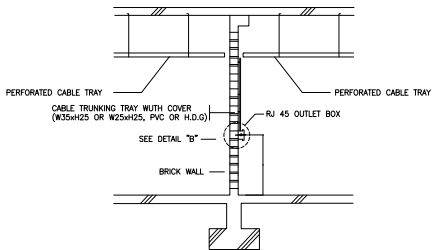
RJ 45 OUTLET FLUSH MOUNTED



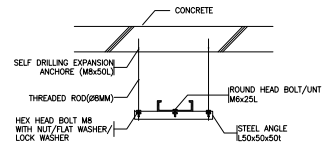
RJ 45/11 OUTLET SURFACE MOUNTED



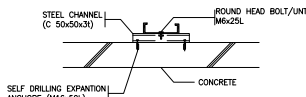
RJ 45 OUTLET FLUSH MOUNTED



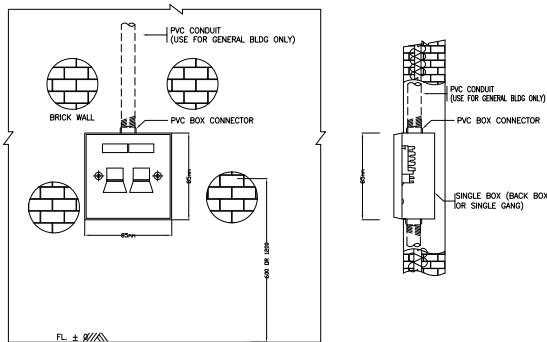
RJ 45 OUTLET SURFACE MOUNTED



PERFORATED CABLE TRAY SUPPORT



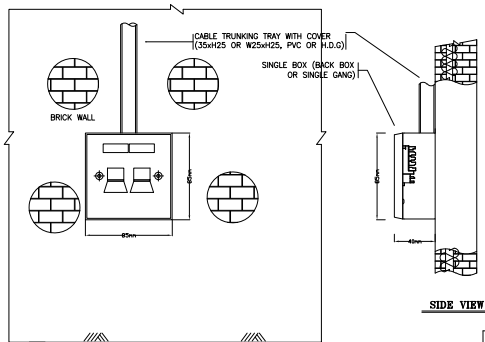
PERFORATED CABLE TRAY SUPPORT



FRONT VIEW

SIDE VIEW

(RJ 45 OUTLET INSERT WALL MTG. TYPE / GENERAL BLDG.)



FRONT VIEW

SIDE VIEW

(RJ 45 OUTLET INSERT WALL MTG. TYPE / GENERAL BLDG.)

LEGEND

REFERENCE DRAWING

DRG. No.

TELECOM DESIGN CRITERIA

BK-GNRL-PEDCO-000-TE-DC-0001

KEY PLAN

REV.	DATE	P.O.I.S	PREP.	CHK.	APP.	AUT.	DESCRIPTION	BY	DATE	BY	DATE
D01	SEP.2021	IP1	H.SHAKIBA	M.PAKHARIAN	M.MEHRSHAD						
D00	AUG.2021	IP1	M.ASHGHAEEZAD	M.PAKHARIAN	SH.GHALIKAR						
REV.	DATE	P.O.I.S	PREP.	CHK.	APP.	AUT.	DESCRIPTION	BY	DATE	BY	DATE
PROJECT NAME:							BINAK OILFIELD DEVELOPMENT GENERAL				
PROJECT NO.:							971020				
EPC CONTRACTOR:							EPD/EPC CONTRACTOR:				
HIRGAN ENERGY							PETROIRAN DEVELOPMENT COMPANY				
DRAWING TITLE:							TELECOM TYPICAL INSTALLATION DETAIL & NOTES				
SCALE							BUDGET REF.				
NTS							F				
DRAWING NO.							SHEET NO.				
BK-GNRL-PEDCO-000-TE-DW-0002							7 OF 22				
REV.							D01				
NO CONSTRUCTION PERMITTED UNLESS DRAWING APPROVED							APPROVED FOR CONSTRUCTION				
BY:							DATE:				
SERIAL NO.							707235				
SHEET							7 OF 22				
REVISION							D01				

Technical drawing of a telephone booth, showing front and side views with numbered callouts (1-12) and detail insets (A and B).

Front View: Shows the telephone set (9) mounted on a surface (10). A flashing beacon (D01) is mounted on top. Armoured cables (6) run vertically from the set to a base (11) at grade level. A dimension of 1300 is indicated for the height of the set assembly.

Side View: Shows the telephone booth (5) with a telephone cable (4) and armoured cables (1, 2, 3, 7) running vertically. A detail (12) is shown at the base of the cables. The base is at grade level.

Detail "A": A cross-section view of the cable entry point, showing the armoured cable, sealing compound, bushing, and conduit.

Detail "B": A top-down view of the base plate, showing a square plate with a central circular opening and four corner mounting holes. Dimensions are 400 (overall width) and 300 (overall height).

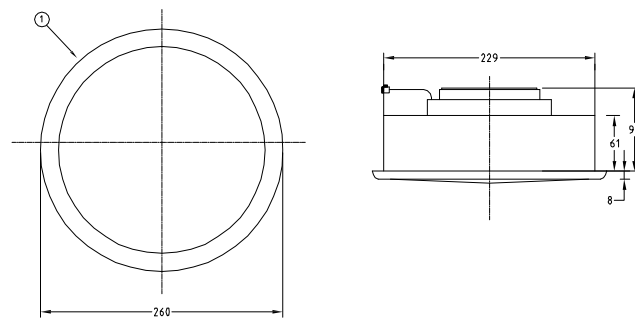
[illegible]

[illegible]

TELECOM TYPICAL INSTALLATION DETAIL
(PAGA)


NOTES	
LEGEND	
REFERENCE DRAWING	DRG. No.
TELECOM DESIGN CRITERIA	BK-GNRAL-PEDCO-000-TE-DC-0001
KEY PLAN	

[illegible]



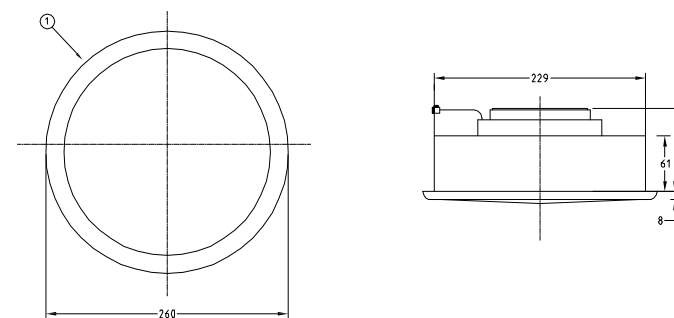
LOUD SPEAKER FALSE CEILING MOUNTING INDOOR

REFERENCE DRAWING	DRG. No.
TELECOM DESIGN CRITERIA	BK-GNRL-PEDCO-000-TE-DC-0001



(VENDOR TITLE BLOCK)**

[illegible]

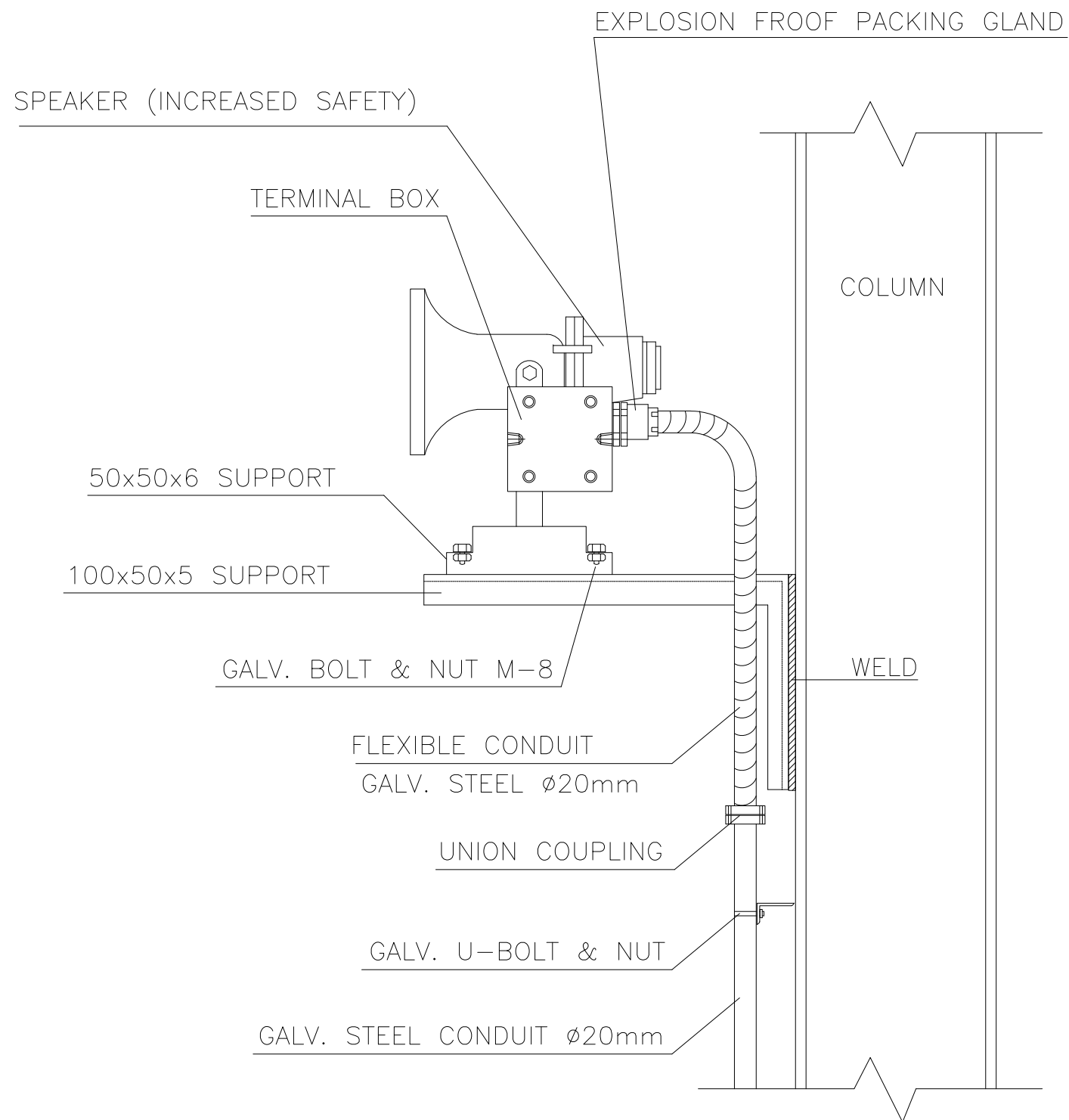


LOUD SPEAKER CEILING MOUNTING INDOOR

REFERENCE DRAWING	DRG. No.
TELECOM DESIGN CRITERIA	BK-GNRAL-PEDCO-000-TE-DC-0001

KEY PLAN

[illegible]

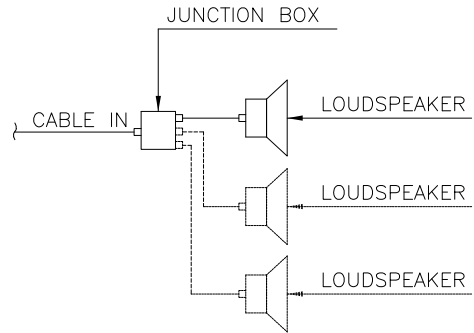


LOUD SPEAKER STRUCTURE MOUNTING EXPLOSION PROOF

NOTES	
LEGEND	
REFERENCE DRAWING	DRG. No.
TELECOM DESIGN CRITERIA	BK-GNRAL-PEDCO-000-TE-DC-0001

KEY PLAN

[illegible]



LOUD SPEAKER POLE MOUNTING

NOTES									
LEGEND									
REFERENCE DRAWING					DRG. No.				
TELECOM DESIGN CRITERIA					BK-GNRAL-PEDCO-000-TE-DC-0001				
KEY PLAN									


***	*****	**..	***.***	**..	***.***				
REV.	DESCRIPTION	BY	DATE	BY	DATE				
		CHECKED		REV. APPR.					
<p style="text-align: center;">  THE ORIGINAL AND ALL COPIES OF THIS DRAWING TOGETHER WITH THE COPYRIGHT THEREIN ARE THE SOLE PROPERTY OF N.I.S.O.C./ FIELDS </p>									
BINAK OILFIELD DEVELOPMENT GENERAL									
DATE	SCALE	DRAWING BY	CHECKED BY	PROJECT ENG.					
NO CONSTRUCTION PERMITTED UNLESS DRAWING APPROVED									
APPROVED FOR CONSTRUCTION			BY:		DATE:				
BUDGET REF.	LOCATION	SIZE	CLASS	SERIAL NO.	SHEET	REVISION			
053-073-9184	F	2	T	707235	16 OF 22	D01			

Diagram illustrating the installation of a loudspeaker using U-shaped mounting brackets and fixing screws.

The diagram shows a vertical wall or column being mounted to. Two U-shaped mounting brackets are shown, one above and one below the loudspeaker. Each bracket is secured to the wall with a fixing screw. The distance between the brackets is indicated as 74 (TYP).

Labels in the diagram include:

- WALL/COLUMN
- FIXING SCREW
- U SHAPED MOUNTING BRACKET
- 74 (TYP)
- LOUDSPEAKER

1. U SHAPED MOUNTING BRACKET WITH FIXING SCREW SHALL BE SUPPLIED BY VENDOR.
2. EXPANSION BOLTS SHALL BE SUPPLIED BY CONTRACTOR.
3. LOUDSPEAKER TO BE INSTALLED AT EL.2.5M IN SUBSTATION ROOM AND AT EL.1.80M IN CELLAR ROOM.

74	3	M6x100mm	EXPANSION BOLT	H.D.G. STEEL	
ITEM	QUAN. REQ.	SIZE	D E S C R I P T I O N	MATERIAL	TOTAL QUAN.
MATERIAL DESCRIPTION					

REFERENCE DRAWING	DRG. No.
TELECOM DESIGN CRITERIA	BK-GNRAL-PEDCO-000-TE-DC-0001

REFERENCE DRAWING	DRG. No.
TELECOM DESIGN CRITERIA	BK-GNRL-PEDCO-000-TE-DC-0001

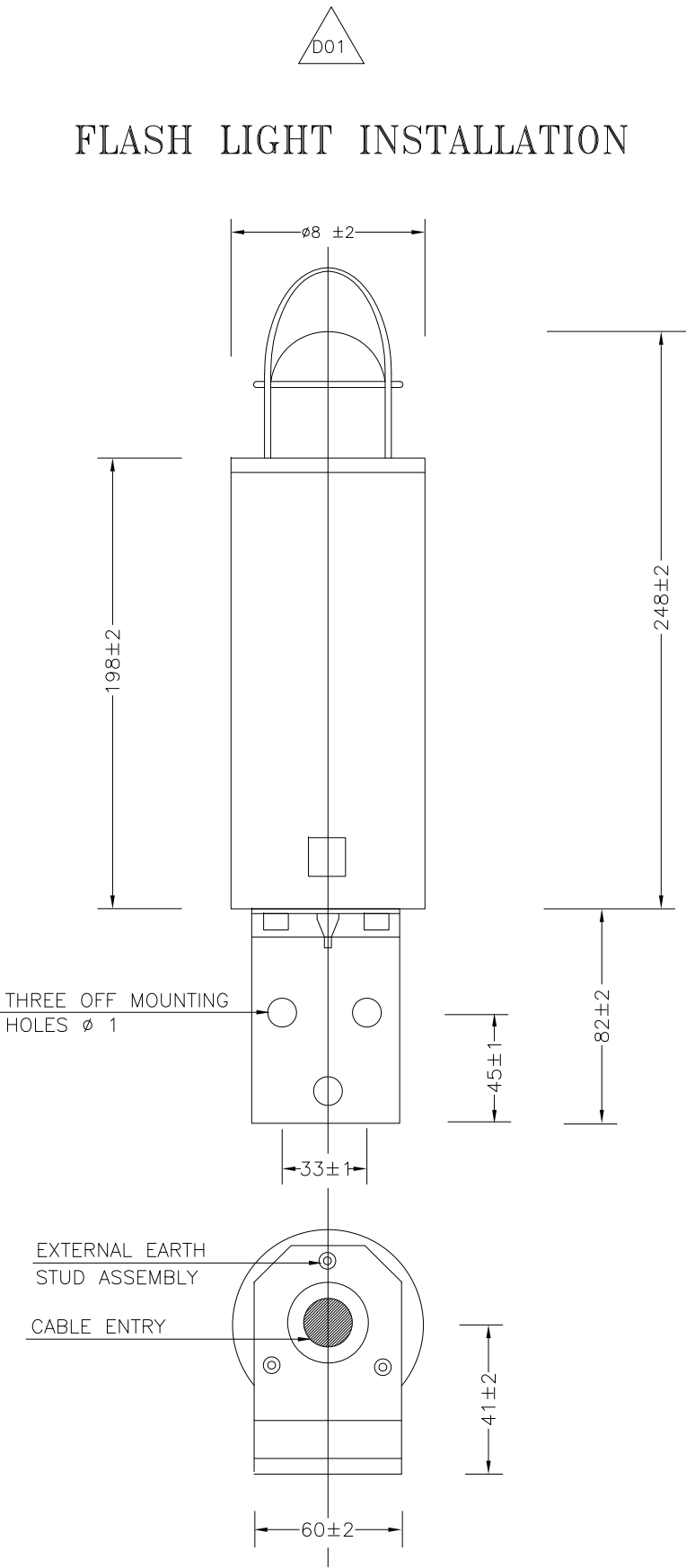
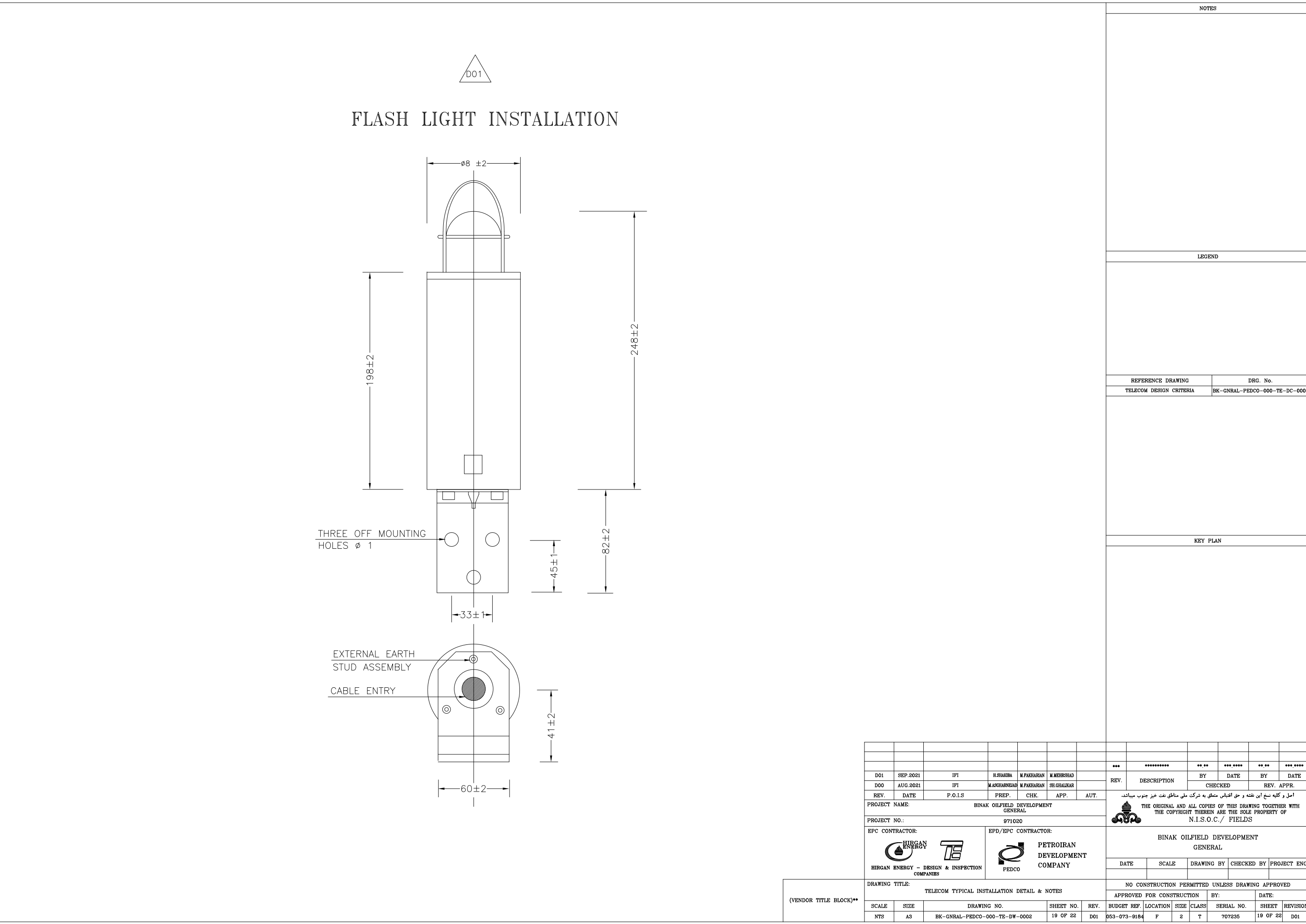
[illegible]



ITEM	D E S C R I P T I O N	QTY.	REMARKS
A	INDUSTRIAL INTERCOM STATION	1	
B	SADDLE WITH 2NoS SCREW	2	
C	35mm PIPE SLEEVE	AS REQ'D	
D	SPEAKER	1	
E	MICROPHONE	1	
F	CABLE GLAND	AS REQ'D	
G	SELECTING SWITCH (SINGLE OR DOUBLE)	AS REQ'D	
H	ACOUSTIC BOOTH	1	

1- EXACT DIMENSIONS OF INTERCOM STATION SHOULD BE
ACCORDING TO VENDOR DOCUMENTS.

[illegible]



(CABLE ROUTE)

NOTES											
LEGEND											
REFERENCE DRAWING						DRG. No.					
TELECOM DESIGN CRITERIA						BK-GNRAL-PEDCO-000-TE-DC-0001					

KEY PLAN											

--	--	--	--	--	--	--	--	--	--	--	--	--	--	--	--	--	--	--	--	--	--	--	--	--	--	--	--	--	--	--	--	--	--	--	--	--	--	--	--	--	--	--	--	--	--	--	--	--	--	--	--	--	--	--	--	--	--	--	--	--	--	--	--	--	--	--	--	--	--	--	--	--	--	--	--	--	--	--	--	--	--	--	--	--	--	--	--	--	--	--	--	--	--	--	--	--	--	--	--	--	--	--	--	--	--	--	--	--	--	--	--	--	--	--	--	--	--	--	--	--	--	--	--	--	--	--	--	--	--	--	--	--	--	--	--	--	--	--	--	--	--	--	--	--	--	--	--	--	--	--	--	--	--	--	--	--	--	--	--	--	--	--	--	--	--	--	--	--	--	--	--	--	--	--	--	--	--	--	--	--	--	--	--	--	--	--	--	--	--	--	--	--	--	--	--	--	--	--	--	--	--	--	--	--	--	--	--	--	--	--	--	--	--	--	--	--	--	--	--	--	--	--	--	--	--	--	--	--	--	--	--	--	--	--	--	--	--	--	--	--	--	--	--	--	--	--	--	--	--	--	--	--	--	--	--	--	--	--	--	--	--	--	--	--	--	--	--	--	--	--	--	--	--	--	--	--	--	--	--	--	--	--	--	--	--	--	--	--	--	--	--	--	--	--	--	--	--	--	--	--	--	--	--	--	--	--	--	--	--	--	--	--	--	--	--	--	--	--	--	--	--	--	--	--	--	--	--	--	--	--	--	--	--	--	--	--	--	--	--	--	--	--	--	--	--	--	--	--	--	--	--	--	--	--	--	--	--	--	--	--	--	--	--	--	--	--	--	--	--	--	--	--	--	--	--	--	--	--	--	--	--	--	--	--	--	--	--	--	--	--	--	--	--	--	--	--	--	--	--	--	--	--	--	--	--	--	--	--	--	--	--	--	--	--	--	--	--	--	--	--	--	--	--	--	--	--	--	--	--	--	--	--	--	--	--	--	--	--	--	--	--	--	--	--	--	--	--	--	--	--	--	--	--	--	--	--	--	--	--	--	--	--	--	--	--	--	--	--	--	--	--	--	--	--	--	--	--	--	--	--	--	--	--	--	--	--	--	--	--	--	--	--	--	--	--	--	--	--	--	--	--	--	--	--	--	--	--	--	--	--	--	--	--	--	--	--	--	--	--	--	--	--	--	--	--	--	--	--	--	--	--	--	--	--	--	--	--	--	--	--	--	--	--	--	--	--	--	--	--	--	--	--	--	--	--	--	--	--	--	--	--	--	--	--	--	--	--	--	--	--	--	--	--	--	--	--	--	--	--	--	--	--	--	--	--	--	--	--	--	--	--	--	--	--	--	--	--	--	--	--	--	--	--	--	--	--	--	--	--	--	--	--	--	--	--	--	--	--	--	--	--	--	--	--	--	--	--	--	--	--	--	--	--	--	--	--	--	--	--	--	--	--	--	--	--	--	--	--	--	--	--	--	--	--	--	--	--	--	--	--	--	--	--	--	--	--	--	--	--	--	--	--	--	--	--	--	--	--	--	--	--	--	--	--	--	--	--	--	--	--	--	--	--	--	--	--	--	--	--	--	--	--	--	--	--	--	--	--	--	--	--	--	--	--	--	--	--	--	--	--	--	--	--	--	--	--	--	--	--	--	--	--	--	--	--	--	--	--	--	--	--	--	--	--	--	--	--	--	--	--	--	--	--	--	--	--	--	--	--	--	--	--	--	--	--	--	--	--	--	--	--	--	--	--	--	--	--	--	--	--	--	--	--	--	--	--	--	--	--	--	--	--	--	--	--	--	--	--	--	--	--	--	--	--	--	--	--	--	--	--	--	--	--	--	--	--	--	--	--	--	--	--	--	--	--	--	--	--	--	--	--	--	--	--	--	--	--	--	--	--	--	--	--	--	--	--	--	--	--	--	--	--	--	--	--	--	--	--	--	--	--	--	--	--	--	--	--	--	--	--	--	--	--	--	--	--	--	--	--	--	--	--	--	--	--	--	--	--	--	--	--	--	--	--	--	--	--	--	--	--	--	--	--	--	--	--	--	--	--	--	--	--	--	--	--	--	--	--	--	--	--	--	--	--	--	--	--	--	--	--	--	--	--	--	--	--	--	--	--	--	--	--	--	--	--	--	--	--	--	--	--	--	--	--	--	--	--	--	--	--	--	--	--	--	--	--	--	--	--	--	--	--	--	--	--	--	--	--	--	--	--	--	--	--	--	--	--	--	--	--	--	--	--	--	--	--	--	--	--	--	--	--	--	--	--	--	--	--	--	--	--	--	--	--	--	--	--	--	--	--	--	--	--	--	--	--	--	--	--	--	--	--	--	--	--	--	--	--	--	--	--	--	--	--	--	--	--	--	--	--	--	--	--	--	--	--	--	--	--	--	--	--	--	--	--	--	--	--	--	--	--	--	--	--	--	--	--	--	--	--	--	--	--	--	--	--	--	--	--	--	--	--	--	--	--	--	--	--	--	--	--	--	--	--	--	--	--	--	--	--	--	--	--	--	--	--	--	--	--	--	--	--	--	--	--	--	--	--	--	--	--	--	--	--	--	--	--	--	--	--	--	--	--	--	--	--	--	--	--	--	--	--	--	--	--	--	--	--	--	--	--	--	--	--	--	--	--	--	--	--	--	--	--	--	--	--	--	--	--	--	--	--	--	--	--	--	--	--	--	--	--	--	--	--	--	--	--	--	--	--	--	--	--	--	--	--	--	--	--	--	--	--	--	--	--	--	--	--	--	--	--	--	--	--	--	--	--	--	--	--	--	--	--	--	--	--	--	--	--	--	--	--	--	--	--	--	--	--	--	--	--	--	--	--	--	--	--	--	--	--	--	--	--	--	--	--	--	--	--	--	--	--	--	--	--	--	--	--	--	--	--	--	--	--	--	--	--	--	--	--	--	--	--	--	--	--	--	--	--	--	--	--	--	--	--	--	--	--	--	--	--	--	--	--	--	--	--	--	--	--	--	--	--	--	--	--	--	--	--	--	--	--	--	--	--	--	--	--	--	--	--	--	--	--	--	--	--	--	--	--	--	--	--	--	--	--	--	--	--	--	--	--	--	--	--	--	--	--	--	--	--	--	--	--	--	--	--	--	--	--	--	--	--	--	--	--	--	--	--	--	--	--	--	--	--	--	--	--	--	--	--	--	--	--	--	--	--	--	--	--	--	--	--	--	--	--	--	--	--	--	--	--	--	--	--	--	--	--	--	--	--	--	--	--	--	--	--	--	--	--	--	--	--	--	--	--	--	--	--	--	--	--	--	--	--	--	--	--	--	--	--	--	--	--	--	--	--	--	--	--	--	--	--	--	--	--	--	--	--	--	--	--	--	--	--	--	--	--	--	--	--	--	--	--	--	--	--	--	--	--	--	--	--	--	--	--	--	--	--	--	--	--	--	--	--	--	--	--	--	--	--

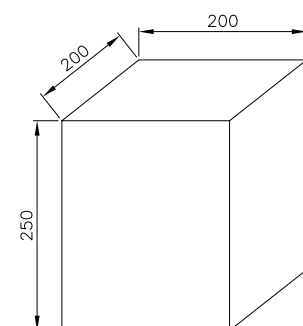


Diagram illustrating a rectangular area labeled "TEL. CABLE". The dimensions are 200 (width) and 250 (height). Inside the rectangle, there is a double-headed arrow pointing left and right, with a small circle in the center.

CABLE MARKER FOR
BEND OF CABLE ROUTE

TELECOM. & POWER BURIED CABLE TRENCH

REFERENCE DRAWING	DRG. No.
TELECOM DESIGN CRITERIA	BK-GNRAL-PEDCO-000-TE-DC-0001

	KEY PLAN
--	----------

[illegible]



Diagram illustrating the experimental setup for the permeability test. The setup includes a central cell (1000 mm wide) containing the porous medium (sand). The cell is covered by a steel plate (COVER) with a hand hole. The cell is connected to a network of 6-inch PVC conduits. The conduits are labeled 1 through 6. The cell is also connected to a water supply system (GL) and a water level measurement system (SAND). The vertical dimensions of the cell are 80 mm, 220 mm, 270 mm, and 450 mm. The horizontal dimensions are 1000 mm and 450 mm.

AROUND HAND HOLE

CABLE TRENCH

[illegible]