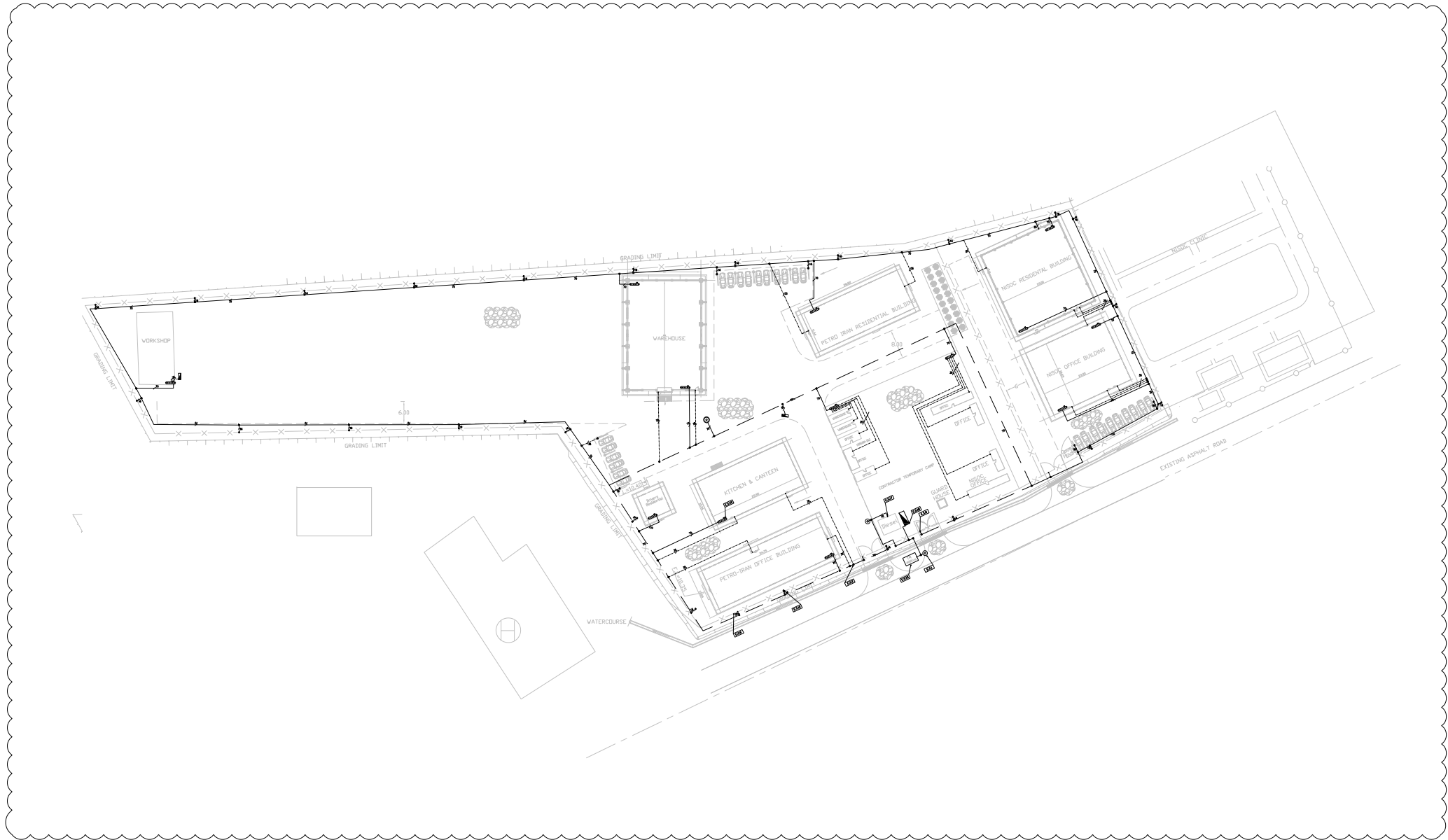


# EARTHING & LIGHTNING LAYOUT FOR CAMP AREA



- | LEGEND |                                                                               |
|--------|-------------------------------------------------------------------------------|
|        | ELECTRICAL PANEL GENERAL SYMBOL                                               |
|        | BARE COPPER GROUNDING CABLE, 70mm2,<br>DEPTH OF PENETRATION: MIN. 0.6m        |
|        | GROUNDING CABLE, 70mm2, WITH Y/G PVC COVER                                    |
|        | GROUNDING CABLE, 35mm2, WITH Y/G PVC COVER                                    |
|        | GROUNDING CABLE, 16mm2, WITH Y/G PVC COVER                                    |
|        | CADWELD CONNECTION                                                            |
|        | GROUNDING EQUIPMENT CONNECTION                                                |
|        | GROUNDING ROD WITH TEST WELL                                                  |
|        | GROUNDING ROD, 2x1.5M LENGTH, 0.02mm2 DIAMETER GALVANIZED<br>STEEL/COPPER ROD |
|        | PE                                                                            |
|        | GROUNDING DISPATCHER (MIN. 6NO. HOLES)                                        |
|        | TYPICAL INSTALLATION ID NO.                                                   |

REFERENCE DRAWING	DRG. No.
OVERALL LAYOUT FOR CAMP AREA	BK-GNRL-PEDCO-220-CY-PY-0001
CABLE ROUTE FOR CAMP AREA	BK-GNRL-PEDCO-220-EL-DW-0001
CALCULATION NOTE FOR EARTHING & LIGHTNING	BK-GCS-PEDCO-120-EL-CN-0006
TYPICAL INSTALLATION DETAILS & NOTES FOR EARTHING SYSTEM & LIGHTNING PROTECTION	BK-GNRL-PEDCO-000-EL-DW-0002

KEY PLAN

[illegible]