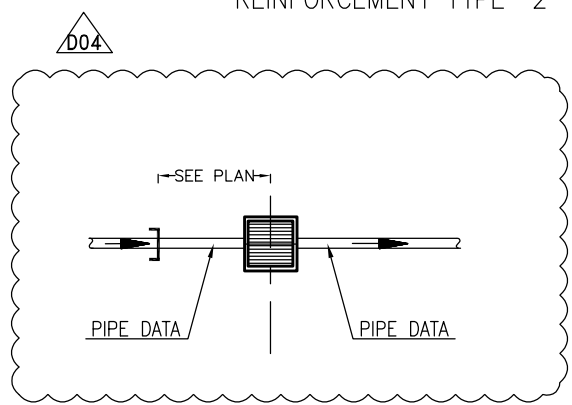
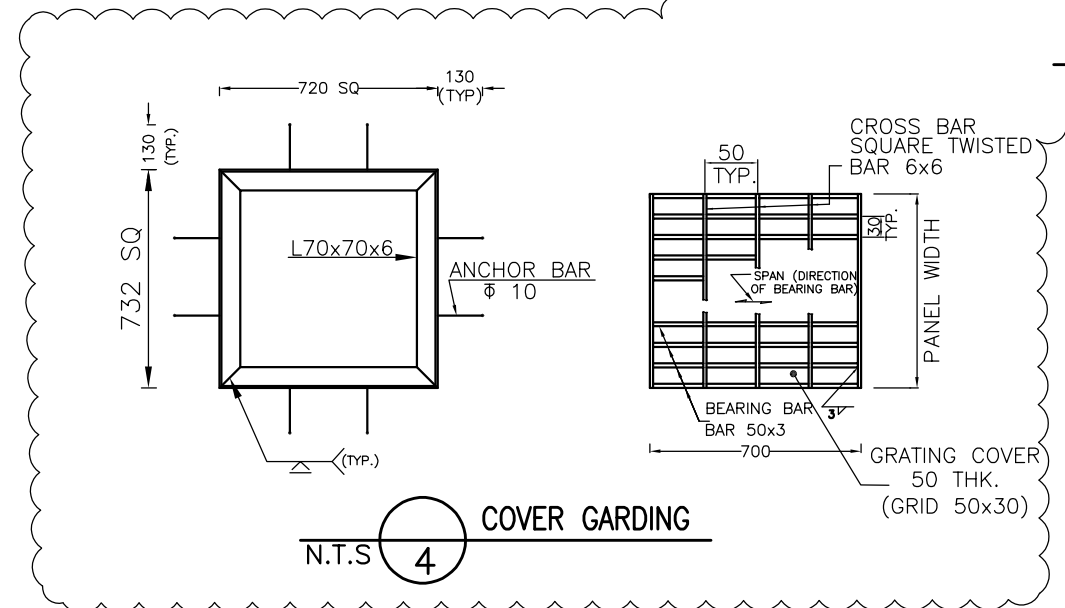


**1** CATCH BASIN FOR ALL AREAS  
N.T.S

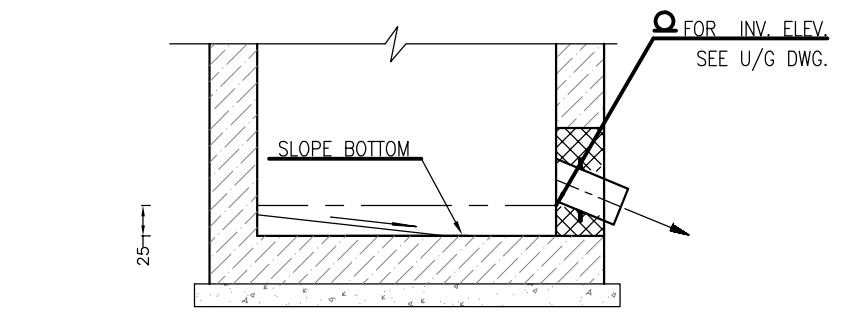
**MANHOLE DIMENSIONS**  
 FOR H<2000 D=150  
 REINFORCEMENT TYPE "1"  
 FOR 2000<H<3000 D=250  
 REINFORCEMENT TYPE "2"



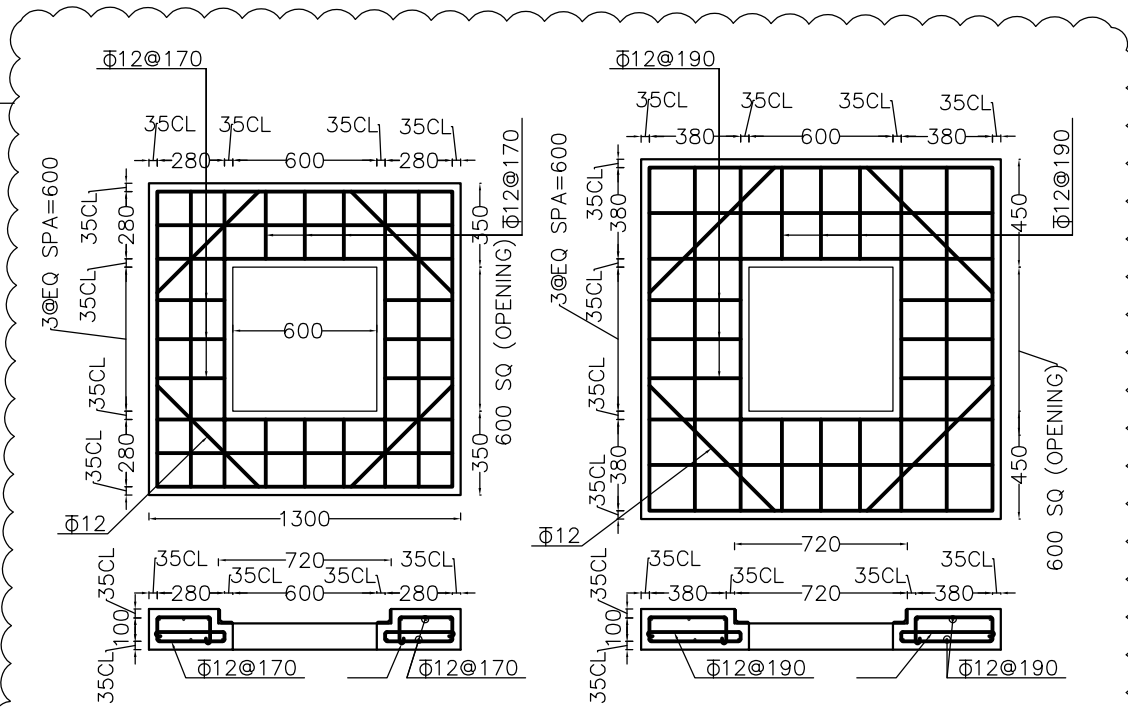
**5** SYMBOL ON U/G DWG  
N.T.S



**4** COVER GARDING  
N.T.S



**2** DETAIL VALID FOR DRY BOX  
N.T.S  
TO BE USED FOR DRAINAGE IN OILY SEWER OF AREAS CONTAINING FIRED EQUIPMENT



**3** COVER REINFORCEMENT  
1:3

- NOTES**
- 1- ALL DIMENSION ARE IN MILLIMETERS UNLESS OTHERWISE STATED.
  - 2- ACCORDING TO THE SPECIFICATION OF CONCRETE WORKS, 28 DAYS CHARACTERISTIC COMPRESSIVE STRENGTH OF CONCRETE IS 25MPa. (ON CYLINDRICAL SPECIMEN).
  - 3- ACCORDING TO THE SPECIFICATION OF CONCRETE WORKS, 28 DAYS CHARACTERISTIC COMPRESSIVE STRENGTH OF CONCRETE IS 10MPa. (ON CYLINDRICAL SPECIMEN).
  - 4- TYPE II CEMENT SHALL BE USED UNLESS OTHERWISE INDICATED IN THE GEOTECHNICAL SITE REPORT.
  - 5- REINFORCING BARS SHALL BE S400 ACCORDING TO: ISIRI3132 AND INBC9 WITH MINIMUM TENSILE YIELD STRENGTH 400 N/mm<sup>2</sup>
  - 6- FOR LADDER RUNGS DETAIL SEE SHEET 2/2.
  - 7- UNDERGROUND CONCRETE SHALL BE PROTECTED AND COATED ACCORDING TO RELEVANT SPECIFICATION.
  - 8- AFTER THE APPROVAL OF THE GEOTECHNICAL REPORT, THE TYPE OF CEMENT WILL BE ANNOUNCED

**LEGEND**

|  |                     |
|--|---------------------|
|  | REINFORCED CONCRETE |
|  | LEAN CONCRETE       |
|  | BACKFILL            |
|  | GRAVEL              |
|  | UNPAVED AREA        |

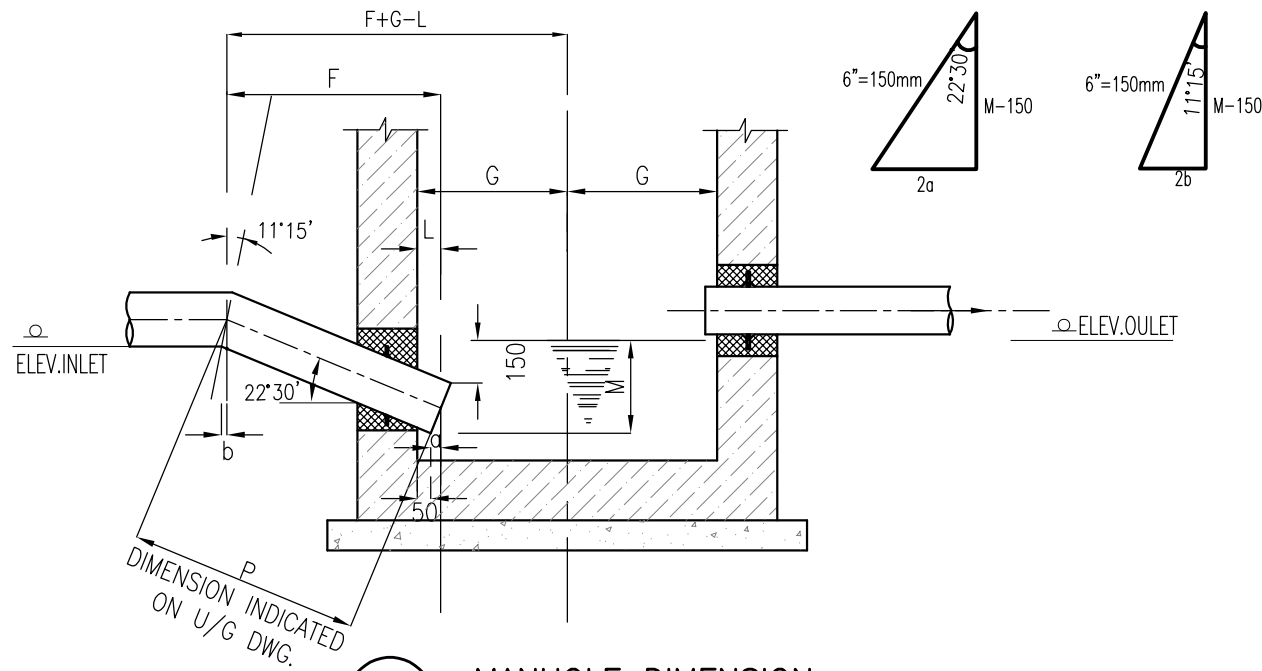
| REFERENCE DRAWING                                    | DRG. No.                     |
|--|------------------------------|
| Specification For Concrete Work                      | BK-GNRL-PEDCO-000-ST-SP-0001 |
| Specification For Sewerage & Drainage                | BK-GNRL-PEDCO-000-CY-SP-0009 |
| Underground System Catch Basin & Dry Boxes           | NOBC-SD-1006-1/10-AS         |
| General Notes - Reinforced Concrete Structures       | BK-GNRL-PEDCO-000-ST-DW-0012 |
| SIPHON PIPE SEAL, HOLES REINFORCEMENT & LADDER RUNGS | NOBC-SD-1006-10/10-AS        |
| STANDARD DETAILS OF MISCELLANEOUS ITEMS              | BK-GNRL-PEDCO-000-CY-DW-0040 |

**KEY PLAN**

| REV. | DATE     | DESCRIPTION | BY           | DATE        | BY         | DATE  |
|------|----------|-------------|--------------|-------------|------------|-------|
| D04  | NOV.2022 | IPA         | R.BEKLOUE    | M.PAKHARJAN | M.MEHRSHAD | ** ** |
| D03  | OCT.2022 | IPA         | R.BEKLOUE    | M.PAKHARJAN | M.MEHRSHAD | ** ** |
| D02  | AUG.2022 | IPA         | R.BEKLOUE    | M.PAKHARJAN | M.MEHRSHAD | ** ** |
| D01  | JAN.2022 | IPA         | R.BEKLOUE    | M.PAKHARJAN | M.MEHRSHAD | ** ** |
| D00  | AUG.2021 | IFI         | M.ASHARBEHAD | M.PAKHARJAN | SH.GHALKAR | ** ** |
| REV. | DATE     | P.O.I.S     | PREP.        | CHK.        | APP.       | AUT.  |

|  |  |  |                            |
|--|--|--|----------------------------|
| <b>PROJECT NAME:</b> BINAK OILFIELD DEVELOPMENT GENERAL                    |  | <b>PROJECT NO.:</b> 971020                       |                            |
| <b>EPC CONTRACTOR:</b><br>HIRGAN ENERGY - DESIGN & INSPECTION COMPANIES    | <b>EPC CONTRACTOR (GC):</b><br>PETROIRAN DEVELOPMENT COMPANY | <b>BINAK OILFIELD DEVELOPMENT GENERAL</b>        |                            |
| <b>DRAWING TITLE:</b> STANDARD DRAWING FOR CATCH BASINS CATCH BASIN DETAIL | <b>NO CONSTRUCTION PERMITTED UNLESS DRAWING APPROVED</b>     |  |                            |
| <b>SCALE:</b> N.T.S  | <b>SIZE:</b> A3  | <b>DRAWING NO.:</b> BK-GNRL-PEDCO-000-CY-DW-0008 | <b>SHEET NO.:</b> 01 OF 02 |
| <b>REV.:</b> D04   | <b>BUDGET REF.:</b> 083-073-9184                             | <b>LOCATION:</b> F                               | <b>CLASS:</b> 4            |
| <b>DATE:</b> 2022  | <b>SIZE:</b> 2   | <b>SERIAL NO.:</b> 707252                        | <b>SHEET REVISION:</b> 1   |

|                                  |               |                    |                    |                      |              |
|----------------------------------|---------------|--------------------|--------------------|----------------------|--------------|
| <b>APPROVED FOR CONSTRUCTION</b> |               |                    |                    | <b>BY:</b>           | <b>DATE:</b> |
| <b>DATE:</b>                     | <b>SCALE:</b> | <b>DRAWING BY:</b> | <b>CHECKED BY:</b> | <b>PROJECT ENG.:</b> |              |



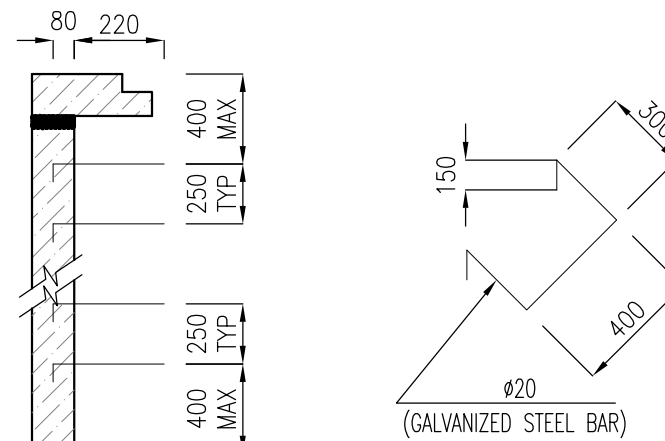
N.T.S 1 MANHOLE DIMENSION

| VALUE OF (a-b)<br>M & L RELEVANT TO INLET PIPE DIAMETER |       |     |     |
|---|-------|-----|-----|
| INLET PIPE DIAMETER                                     | a - b | M   | L   |
| ø4"   | 10    | 250 | 70  |
| ø6"   | 15    | 310 | 80  |
| ø8"   | 20    | 360 | 90  |
| ø10"  | 25    | 402 | 102 |
| ø12"  | 30    | 448 | 112 |
| ø14"  | 33    | 478 | 118 |
| ø16"  | 37    | 525 | 128 |
| ø18"  | 42    | 572 | 137 |
| ø20"  | 47    | 618 | 147 |
| ø24"  | 56    | 713 | 167 |
| ø28"  | 66    | 807 | 186 |
| ø32"  | 75    | 901 | 205 |

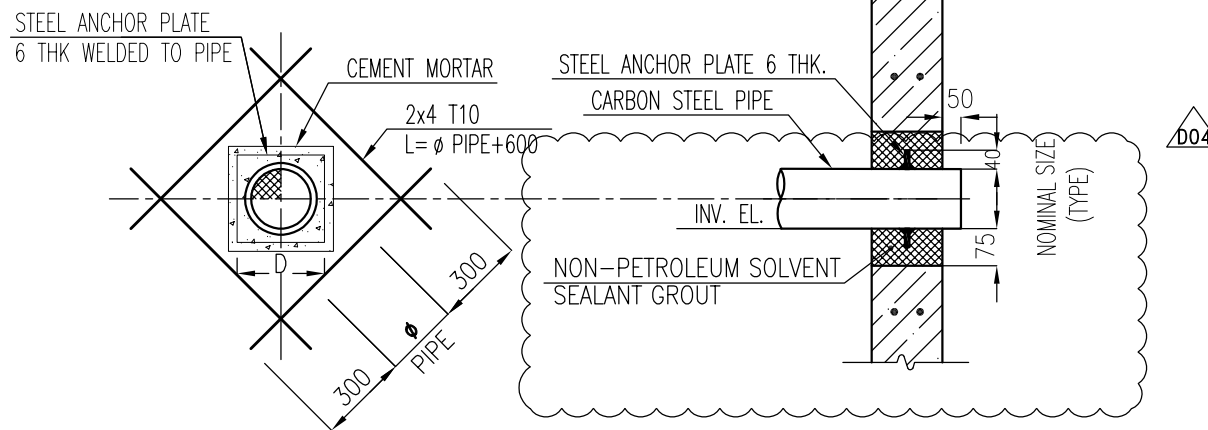
DETERMINATION OF DIMENSION "P" TO BE INDICATED ON U/G DWG.

$$F = 2.414 \times [(ELEV.INLET - ELEV.OUTLET) + M] + (a - b)$$

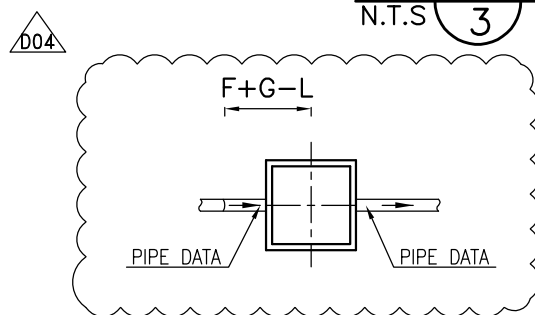
$$P = 1.08 \times F \quad \text{SIPHON PIPE SEAL TO } 22^\circ, 30'$$



N.T.S 2 LADDER RUNGS DETAIL (ONLY FOR H ≥ 1050)



N.T.S 3 OPENNING REINFORCEMENT (TYPICAL FOR INLET/OUTLET PIPE)



N.T.S 4 SYMBOL ON U/G DWG

- NOTES**
- 1- ALL DIMENSION ARE IN MILLIMETERS UNLESS OTHERWISE STATED.
  - 2- ACCORDING TO THE SPECIFICATION OF CONCRETE WORKS, 28 DAYS CHARACTERISTIC COMPRESSIVE STRENGTH OF CONCRETE IS 25MPa. (ON CYLINDRICAL SPECIMEN).
  - 3- ACCORDING TO THE SPECIFICATION OF CONCRETE WORKS, 28 DAYS CHARACTERISTIC COMPRESSIVE STRENGTH OF LEAN CONCRETE IS 10MPa. (ON CYLINDRICAL SPECIMEN).
  - 4- TYPE II CEMENT SHALL BE USED UNLESS OTHERWISE INDICATED IN THE GEOTECHNICAL SITE REPORT.
  - 5- REINFORCING BARS SHALL BE S400 ACCORDING TO: ISIRI3132 AND INBC9 WITH MINIMUM TENSILE YIELD STRENGTH 400 N/mm<sup>2</sup>
  - 6- FOR LADDER RUNGS DETAIL SEE SHEET 2/2.
  - 7- UNDERGROUND CONCRETE SHALL BE PROTECTED AND COATED ACCORDING TO RELEVANT SPECIFICATION.
  - 8- AFTER THE APPROVAL OF THE GEOTECHNICAL REPORT, THE TYPE OF CEMENT WILL BE ANNOUNCED

**LEGEND**

|  |                     |
|--|---------------------|
|  | REINFORCED CONCRETE |
|  | LEAN CONCRETE       |
|  | BACKFILL            |
|  | GRAVEL              |
|  | UNPAVED AREA        |

| REFERENCE DRAWING                                    | DRG. No.                     |
|--|------------------------------|
| Specification For Concrete Work                      | BK-GNRL-PEDCO-000-ST-SP-0001 |
| Specification For Sewerage & Drainage                | BK-GNRL-PEDCO-000-CY-SP-0009 |
| Underground System Catch Basin & Dry Boxes           | NOBC-SD-1006-1/10-A3         |
| General Notes - Reinforced Concrete Structures       | BK-GNRL-PEDCO-000-ST-DW-0012 |
| SIPHON PIPE SEAL, HOLES REINFORCEMENT & LADDER RUNGS | NOBC-SD-1006-10/10-A3        |
| STANDARD DETAILS OF MISCELLANEOUS ITEMS              | BK-GNRL-PEDCO-000-CY-DW-0040 |

**KEY PLAN**

| REV. | DATE     | DESCRIPTION | BY          | DATE        | BY         | DATE  |
|------|----------|-------------|-------------|-------------|------------|-------|
| DD4  | NOV.2022 | IPF         | R.BEKLOUE   | M.PAKHARJAN | M.MEHRSHAD | ** ** |
| DD3  | OCT.2022 | IPF         | R.BEKLOUE   | M.PAKHARJAN | M.MEHRSHAD | ** ** |
| DD2  | AUG.2022 | IPF         | R.BEKLOUE   | M.PAKHARJAN | M.MEHRSHAD | ** ** |
| DD1  | JAN.2022 | IPF         | R.BEKLOUE   | M.PAKHARJAN | M.MEHRSHAD | ** ** |
| DD0  | AUG.2021 | IPF         | M.ASHARBEAD | M.PAKHARJAN | SH.GHALKAR | ** ** |
| REV. | DATE     | P.O.I.S     | PREP.       | CHK.        | APP.       | AUT.  |

**PROJECT NAME:** BINAK OILFIELD DEVELOPMENT GENERAL

**PROJECT NO.:** 971020

**EPC CONTRACTOR:** HIRGAN ENERGY - DESIGN & INSPECTION COMPANIES

**EPC CONTRACTOR (GC):** PETROIRAN DEVELOPMENT COMPANY

**DRAWING TITLE:** STANDARD DRAWING FOR CATCH BASINS CATCH BASIN DIMENSION - LADDER DETAIL

**NO CONSTRUCTION PERMITTED UNLESS DRAWING APPROVED**

**APPROVED FOR CONSTRUCTION** BY: DATE:

| SCALE | SIZE | DRAWING NO.                  | SHEET NO. | REV. | BUDGET REF.  | LOCATION | SIZE | CLASS | SERIAL NO. | SHEET | REVISION |
|-------|------|------------------------------|-----------|------|--------------|----------|------|-------|------------|-------|----------|
| N.T.S | A3   | BK-GNRL-PEDCO-000-CY-DW-0008 | 02 OF 02  | D04  | 083-073-9184 | F        | 4    | 2     | 707252     | 2     | D04      |

اسم و کلیه نسخ این نقشه و حق اقتباس متعلق به شرکت ملی مناطق نفت خیز جنوب میباشد.

THE ORIGINAL AND ALL COPIES OF THIS DRAWING TOGETHER WITH THE COPYRIGHT THEREON ARE THE SOLE PROPERTY OF N.I.S.O.C./ FIELDS

**BINAK OILFIELD DEVELOPMENT GENERAL**

| DATE | SCALE | DRAWING BY | CHECKED BY | PROJECT ENG. |
|------|-------|------------|------------|--------------|
|      |       |            |            |              |