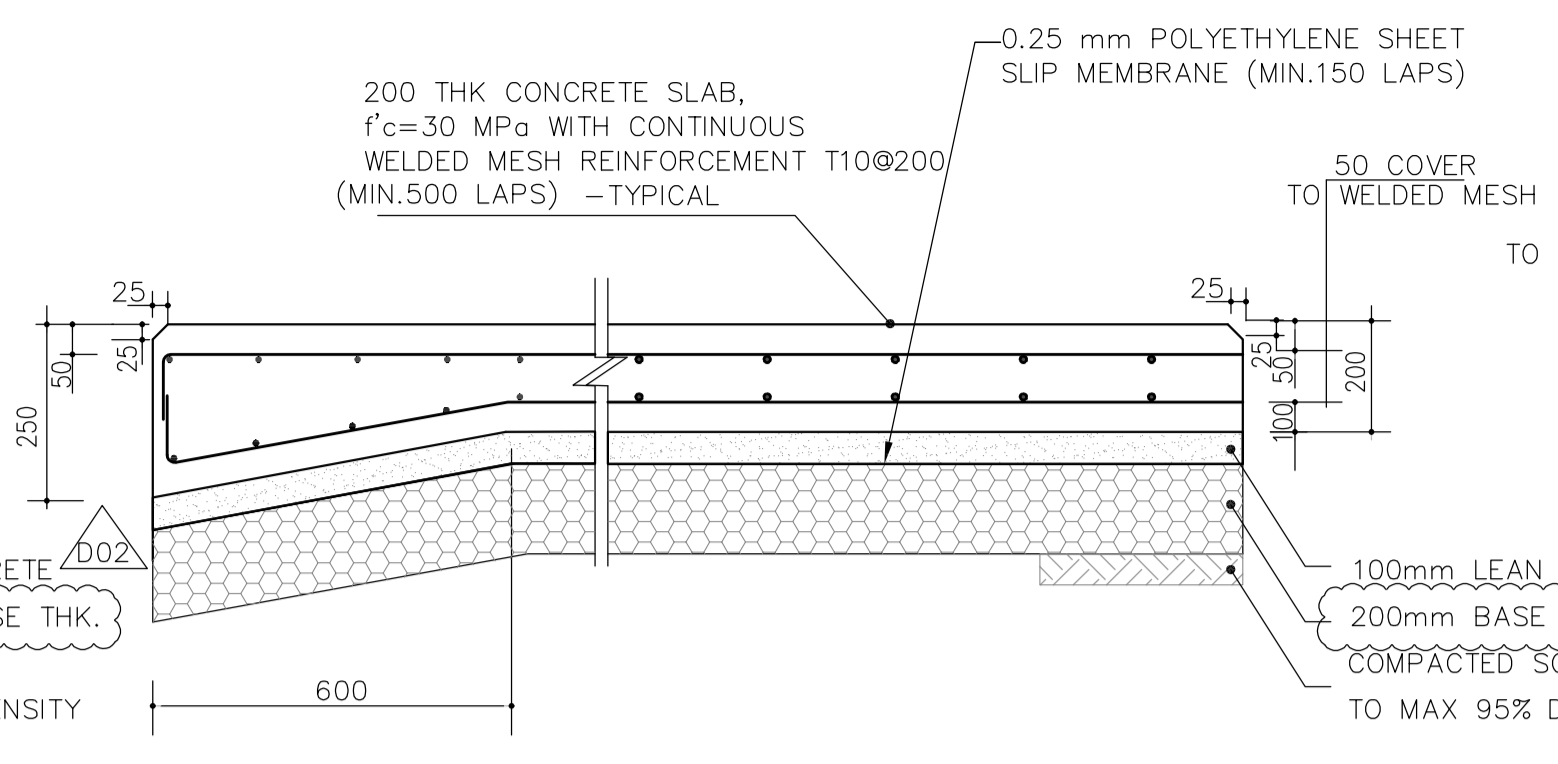
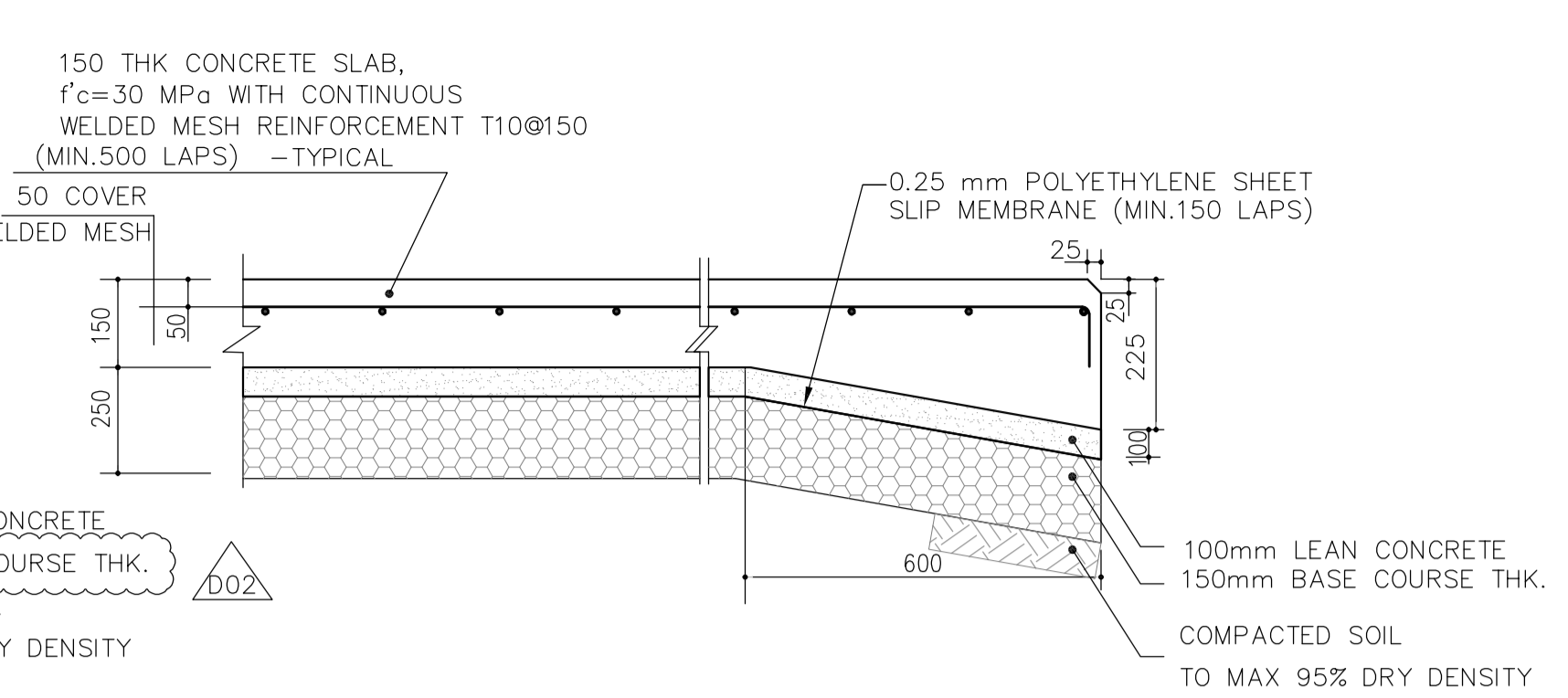


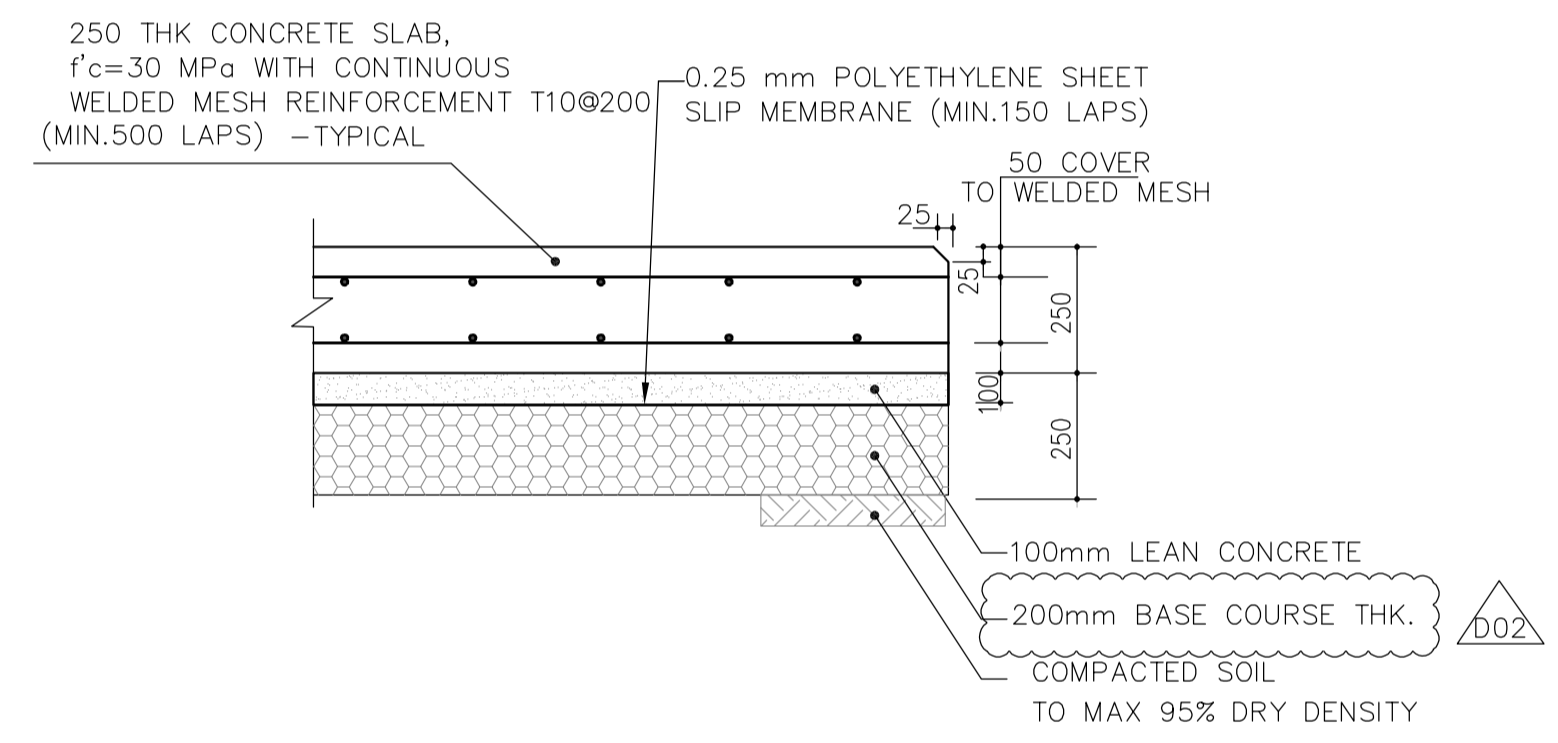
1 250 THK CONCRETE PAVING DETAIL  
SUPER HEAVY DUTY PAVING (FOR EDGE OF PAVING)



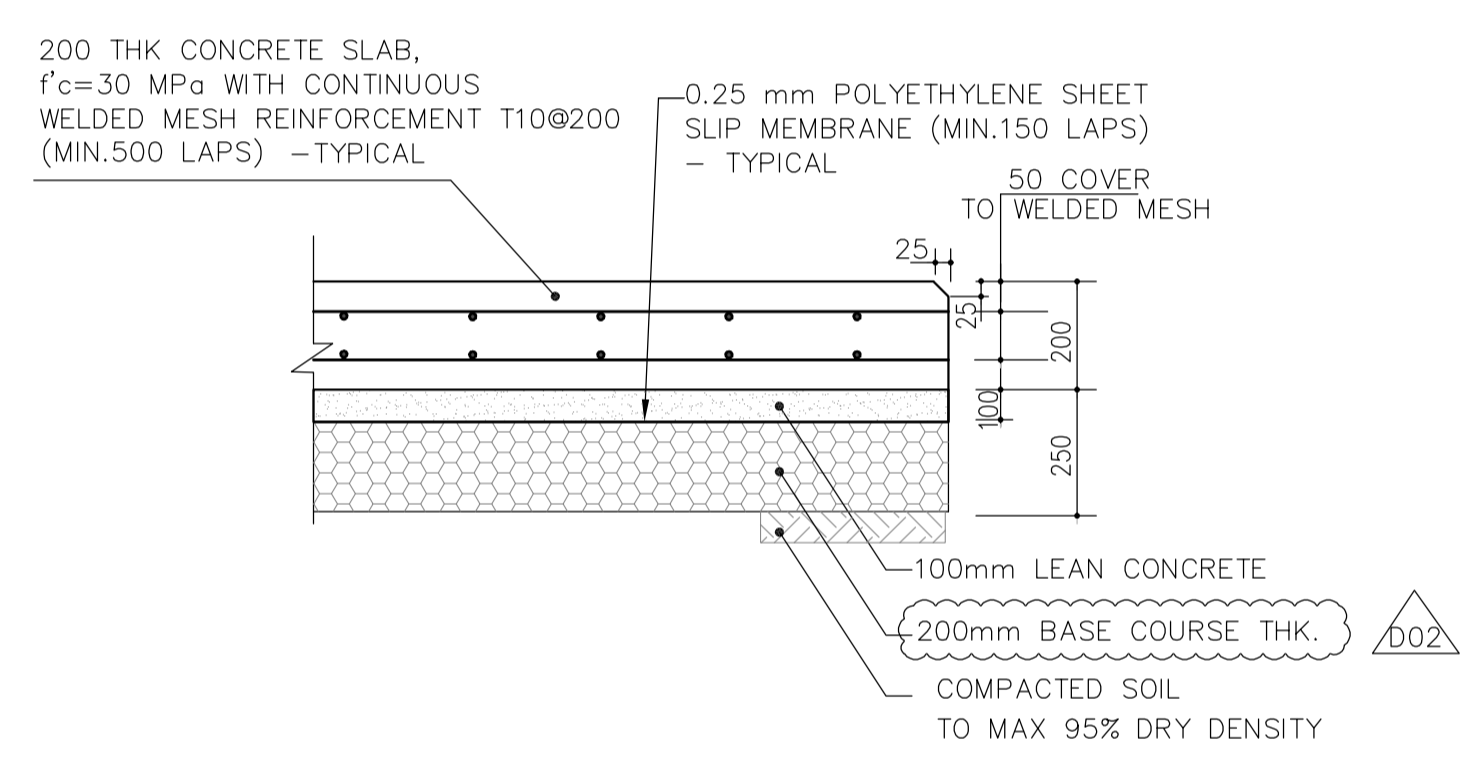
2 200 THK CONCRETE PAVING DETAIL  
HEAVY DUTY PAVING (FOR EDGE OF PAVING)



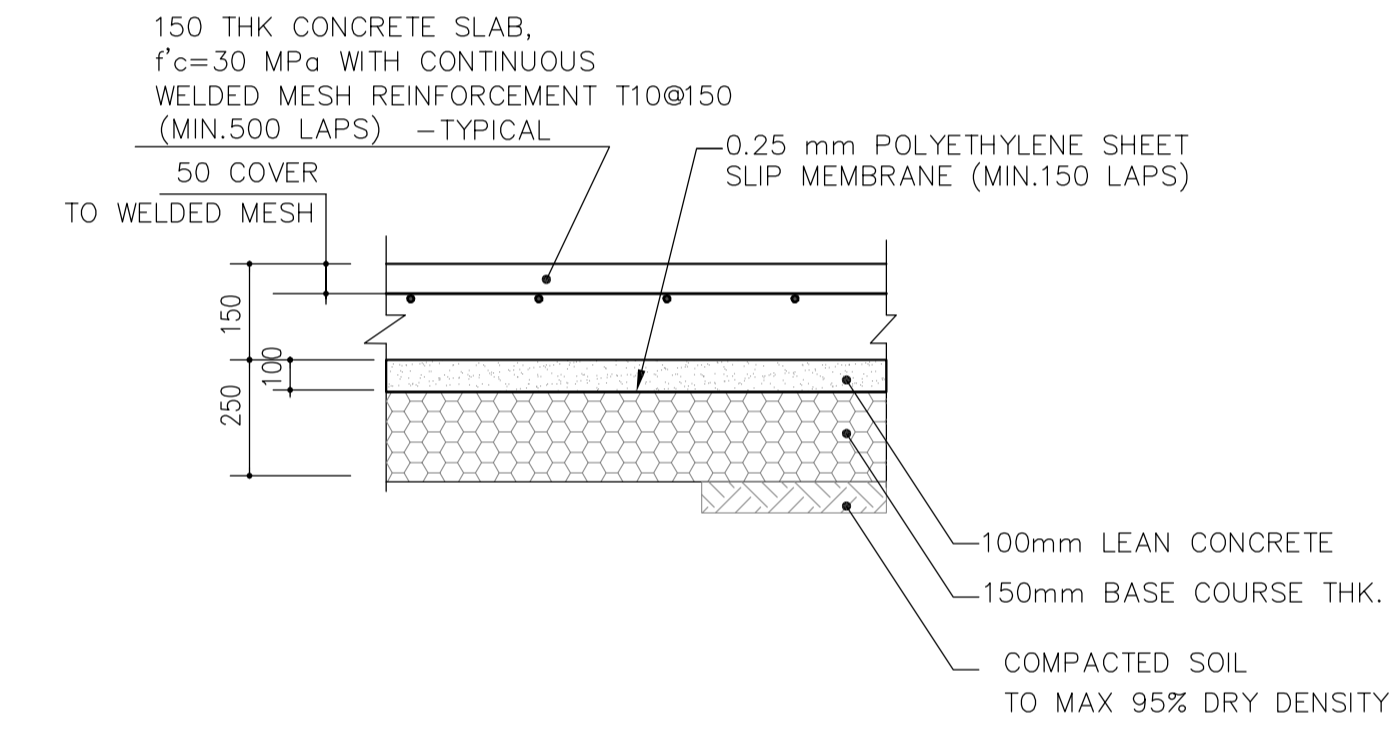
3 150 THK CONCRETE PAVING DETAIL  
MEDIUM DUTY PAVING (FOR EDGE OF PAVING)



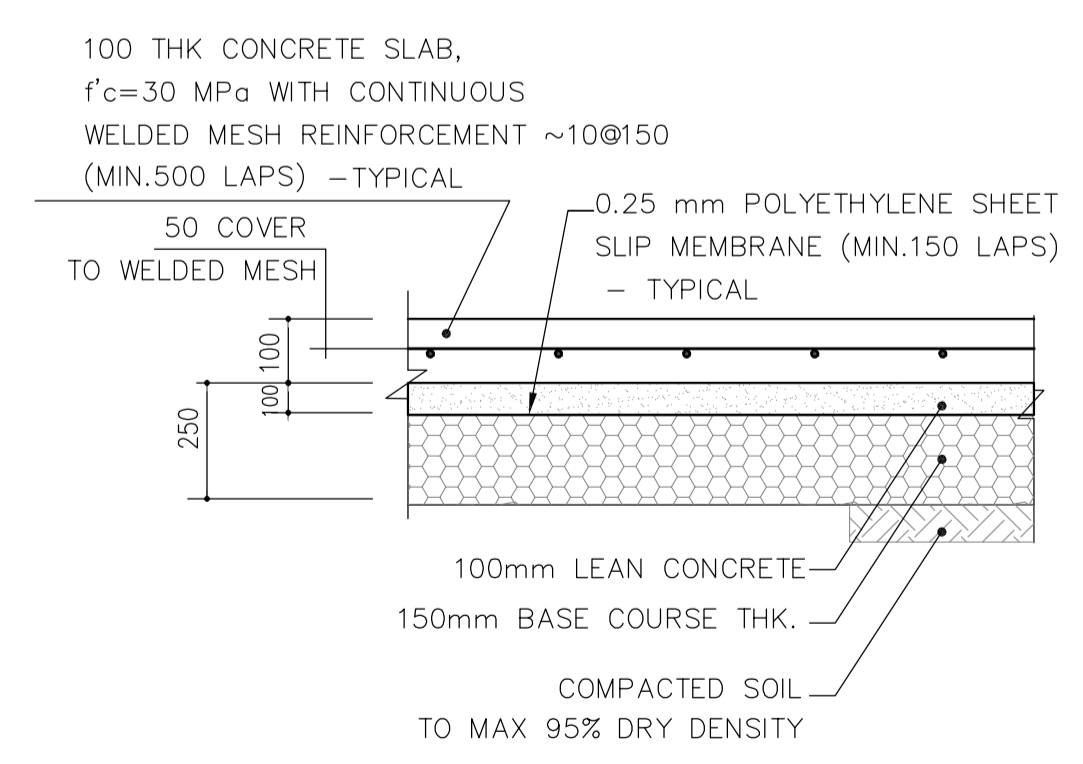
4 250 THK CONCRETE PAVING DETAIL  
SUPER HEAVY DUTY PAVING



5 200 THK CONCRETE PAVING DETAIL  
HEAVY DUTY PAVING



6 150 THK CONCRETE PAVING DETAIL  
MEDIUM DUTY PAVING



7 100 THK CONCRETE PAVING DETAIL  
LIGHT DUTY PAVING

- NOTES**
- ALL DIMENSIONS ARE IN MILLIMETERS & ELEVATIONS IN METERS UNLESS OTHERWISE SPECIFIED.
  - ALL CONCRETE PAVING SHALL BE DESIGNED ACCORDING TO STRUCTURAL DESIGN CRITERIA "BK-GNRL-PEDCO-000-ST-DC-0001".
  - REFER TO ACI 504R "GUIDE TO SEALING JOINTS IN CONCRETE STRUCTURES".
  - REFER TO ACI 224.3R "JOINTS IN CONCRETE CONSTRUCTION" FOR JOINT SPACING.
  - ACCORDING TO THE SPECIFICATION OF CONCRETE WORKS, 28 DAYS CHARACTERISTIC COMPRESSIVE STRENGTH OF CONCRETE IS 30 N/mm<sup>2</sup>. (ON CYLINDRICAL SPECIMEN).
  - ACCORDING TO THE SPECIFICATION OF CONCRETE WORKS, 28 DAYS CHARACTERISTIC COMPRESSIVE STRENGTH OF LEAN CONCRETE IS 10MPa. (ON CYLINDRICAL SPECIMEN).
  - REINFORCING BARS SHALL BE S400 ACCORDING TO: ISRI3132, AND NIBC9 WITH MINIMUM TENSILE YIELD STRENGTH 400 MPa.
  - ACCORDING TO THE GEOTECHNICAL SITE REPORT, CEMENT TYPE WILL BE SPECIFIED.
  - ONE HALF DOWEL BAR FOR CONSTRUCTION JOINTS SHALL BE GREASED TO PREVENT BOND WITH CONCRETE.
  - DOWEL BARS FOR EXPANSION JOINT SHALL BE PROVIDED WITH EXPANSION CAP AND COATED WITH DE BONDING COMPOUND OR GREASE.
  - CONCRETE PAVING SHALL BE KEPT INDEPENDENT OF FOUNDATION AND PIERS WITH ISOLATION JOINT, FILL WITH JOINT FILLER AND WITH SEALANT ON ALL EXPOSED FACES:
    - 12 mm THK. JOINT: AROUND FOUNDATION SUPPORTING STRUCTURES AND STATIC EQUIPMENT.
    - 25 mm THK. JOINT: AROUND FOUNDATION SUPPORTING HEAVY VIBRATING EQUIPMENT.
  - ALL EXPANSION JOINTS SHALL BE MADE UP WITH FILLER MATERIALS AS FOLLOWS:
    - FOR PAVING: PRE-MOLDED JOINT FILLER WITH AN ELASTOMERIC OIL RESISTANT SEALER (NON EXTRUDED TYPE).
    - FOR JOINT AROUND FOUNDATION PLINTHS: "FLEX CELL" OR SIMILAR JOINT FILLER MATERIAL.
  - SEALANT MATERIALS FOR EXPANSION, CONSTRUCTION AND CONTRACTOR JOINT, SHALL BE ELASTOMERIC OIL RESISTANT SEALER SUCH AS "AEROLASTIC 1614" OR SIMILAR.
  - ALL CONCRETE PAVING SHALL BE INSTALLED ON A 0.25 mm POLYETHYLENE SHEET LAID OVER THE BASE.
  - CONCRETE PAVING SHALL BE LAID WITH A WOOD FLOAT FINISH.
  - ALL EXPOSED CORNERS SHALL BE CHAMFERED 25\*25 mm.

**LEGEND**

REFERENCE DRAWING	DRG. No.
GENERAL NOTES-REINFORCED CONCRETE STRUCTURES	BK-GNRL-PEDCO-000-CV-DW-0012
SPECIFICATION FOR ROAD & PAVING	BK-GNRL-PEDCO-000-CV-SP-0002

**KEY PLAN**

REV.	DATE	P.O.I.S	PREP.	CHK.	APP.	AUT.	DESCRIPTION	BY	DATE	BY	DATE
D02	DEC.2022	AFC	R.BERLOUE	M.FAKHARIAN	M.MEHRSHAD	***	*****	***	*****	***	*****
D01	APR.2022	IFA	R.BERLOUE	M.FAKHARIAN	M.MEHRSHAD	***					
D00	JAN.2022	IFC	R.BERLOUE	M.FAKHARIAN	M.MEHRSHAD	***					
REV.	DATE	P.O.I.S	PREP.	CHK.	APP.	AUT.	CHECKED			REV. APPR.	

اگر و کلیه نسخ این نقشه و حق امتیاز متعلق به شرکت ملی مناطق نفت خیز جنوب میباشد.

THE ORIGINAL AND ALL COPIES OF THIS DRAWING TOGETHER WITH THE COPYRIGHT THEREIN ARE THE SOLE PROPERTY OF N.I.S.O.C./ FIELDS

**PROJECT NAME:** BINAK OILFIELD DEVELOPMENT GENERAL

**PROJECT NO.:** 971020

**EPC CONTRACTOR:** HIRGAN ENERGY DESIGN & INSPECTION COMPANIES

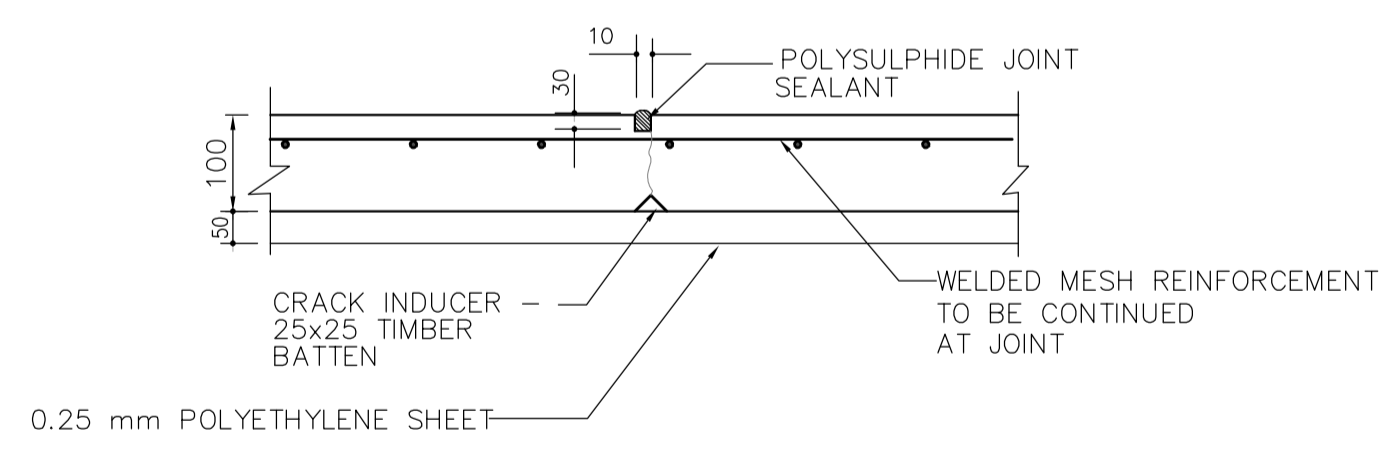
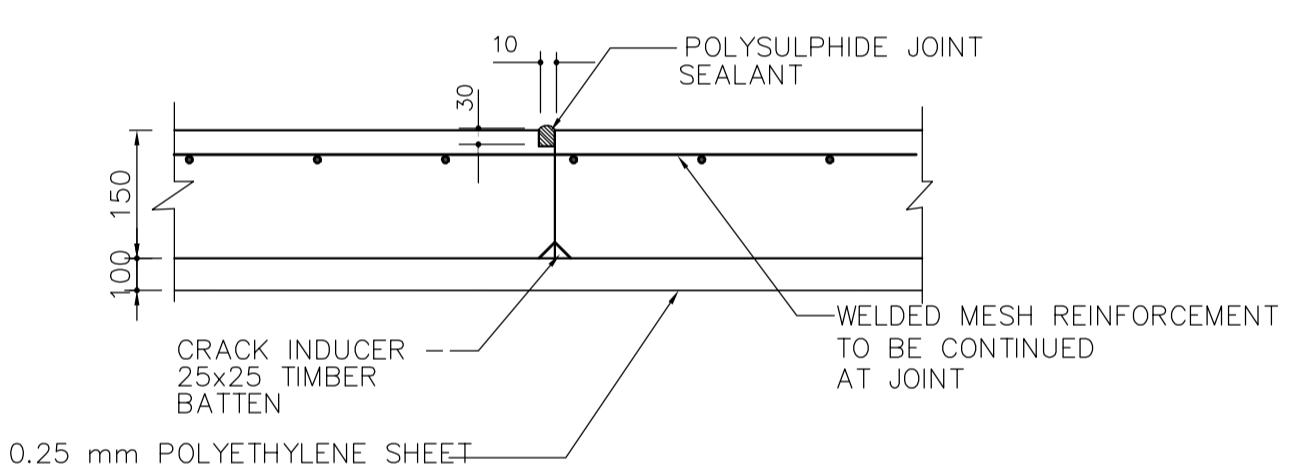
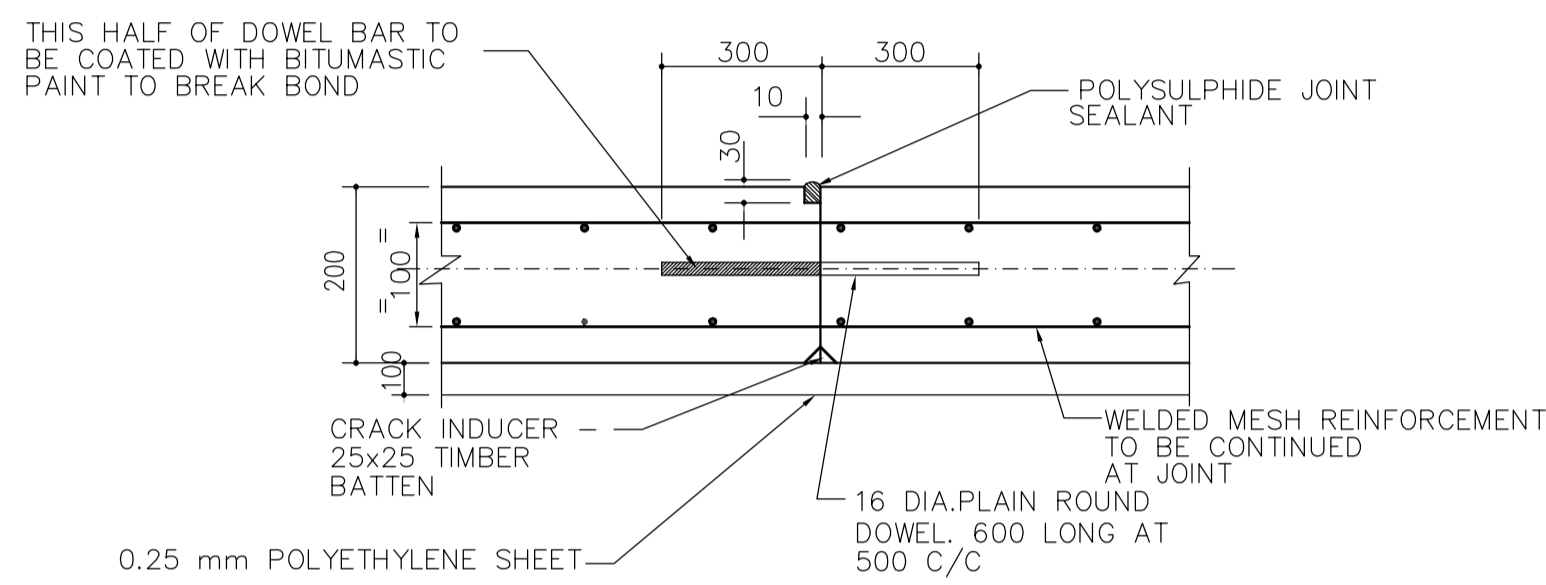
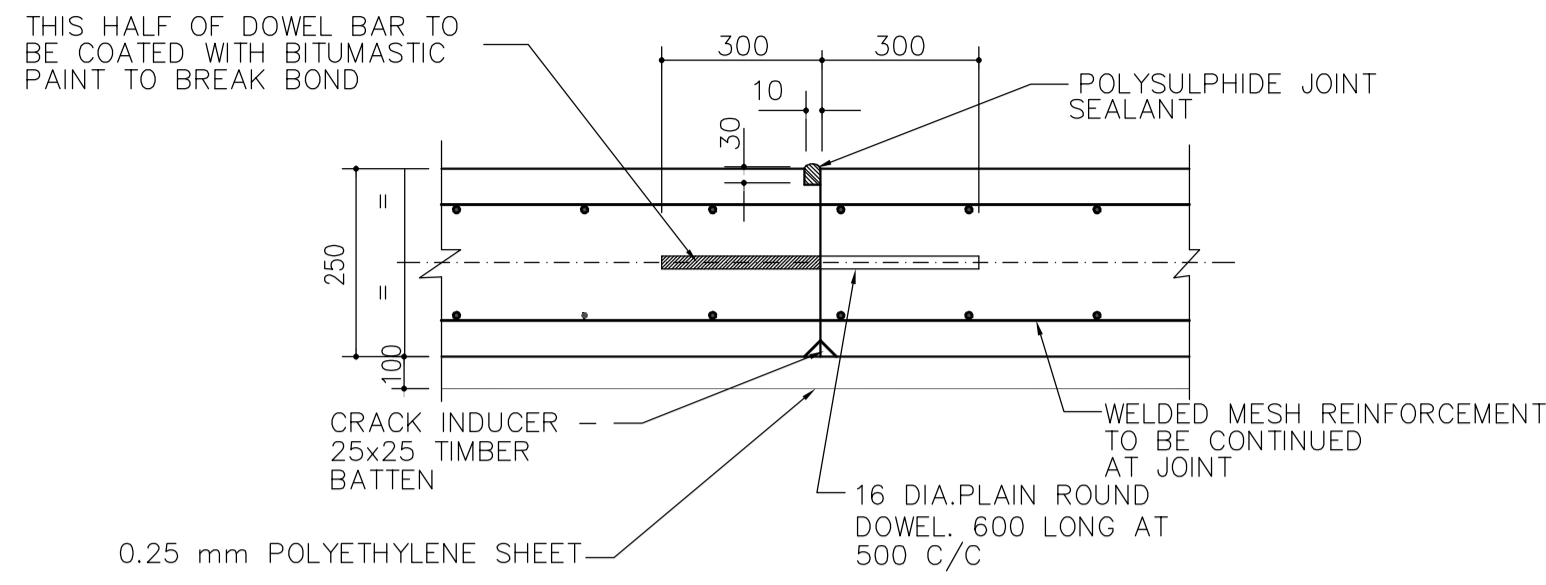
**EPD/EPC CONTRACTOR (GC):** PETROIRAN DEVELOPMENT COMPANY

**BINAK OILFIELD DEVELOPMENT GENERAL**

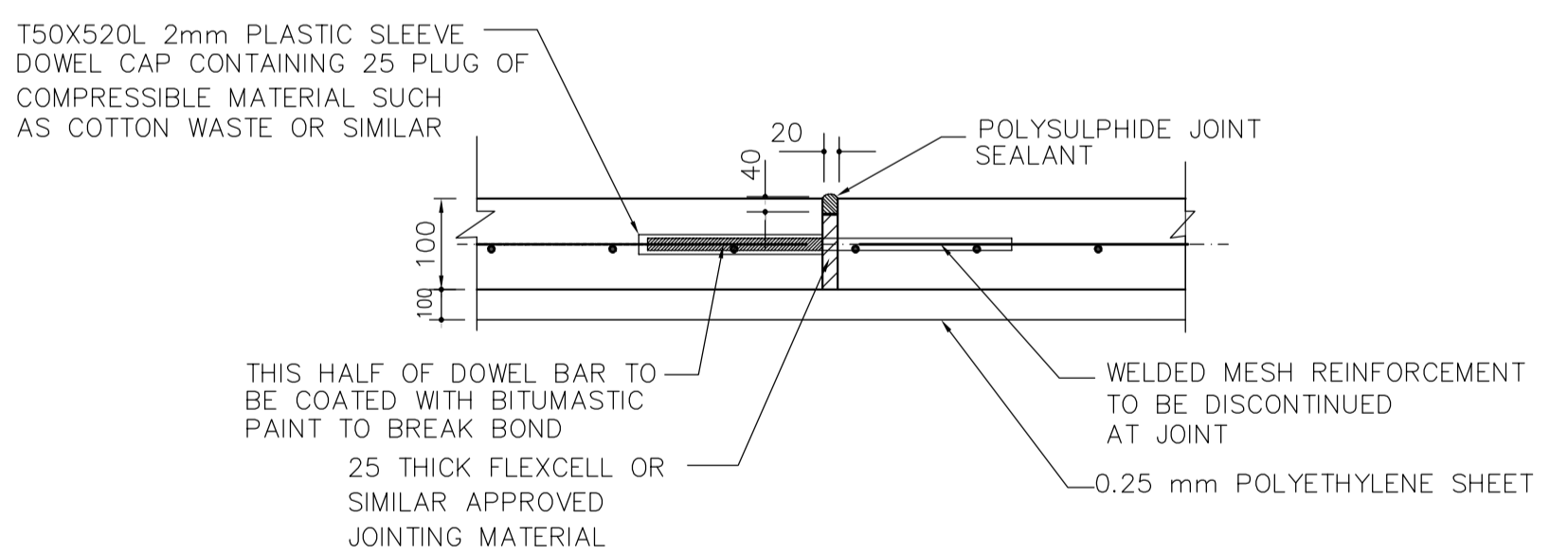
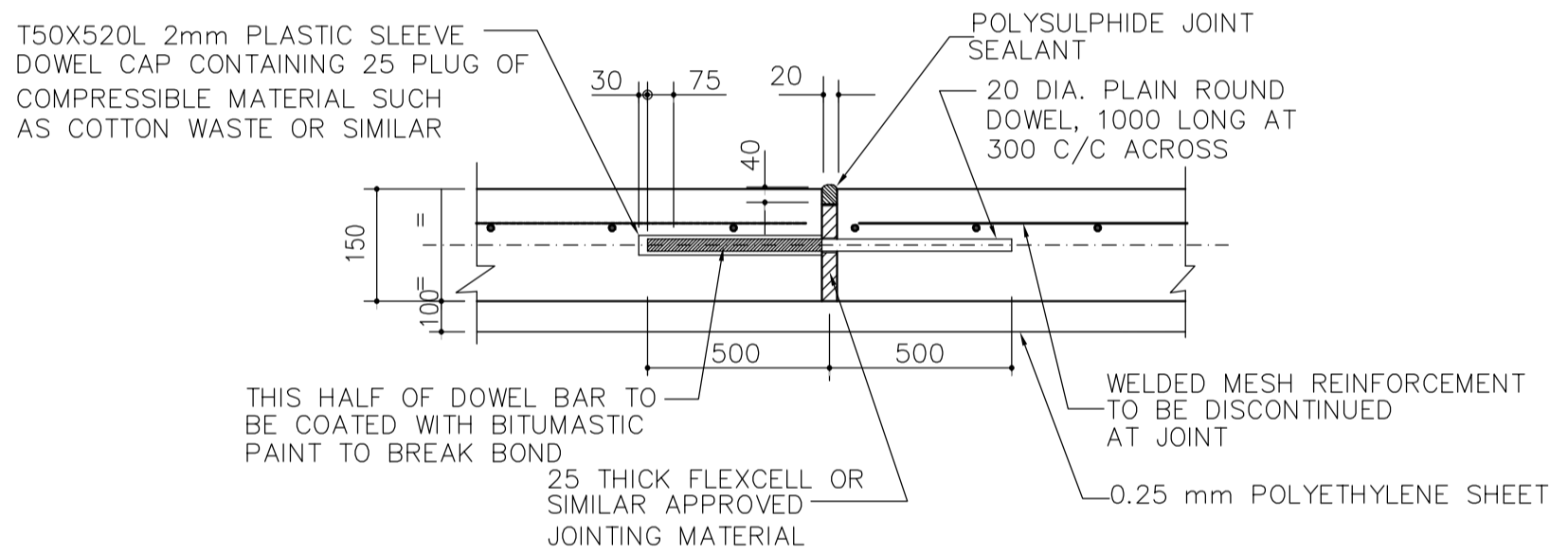
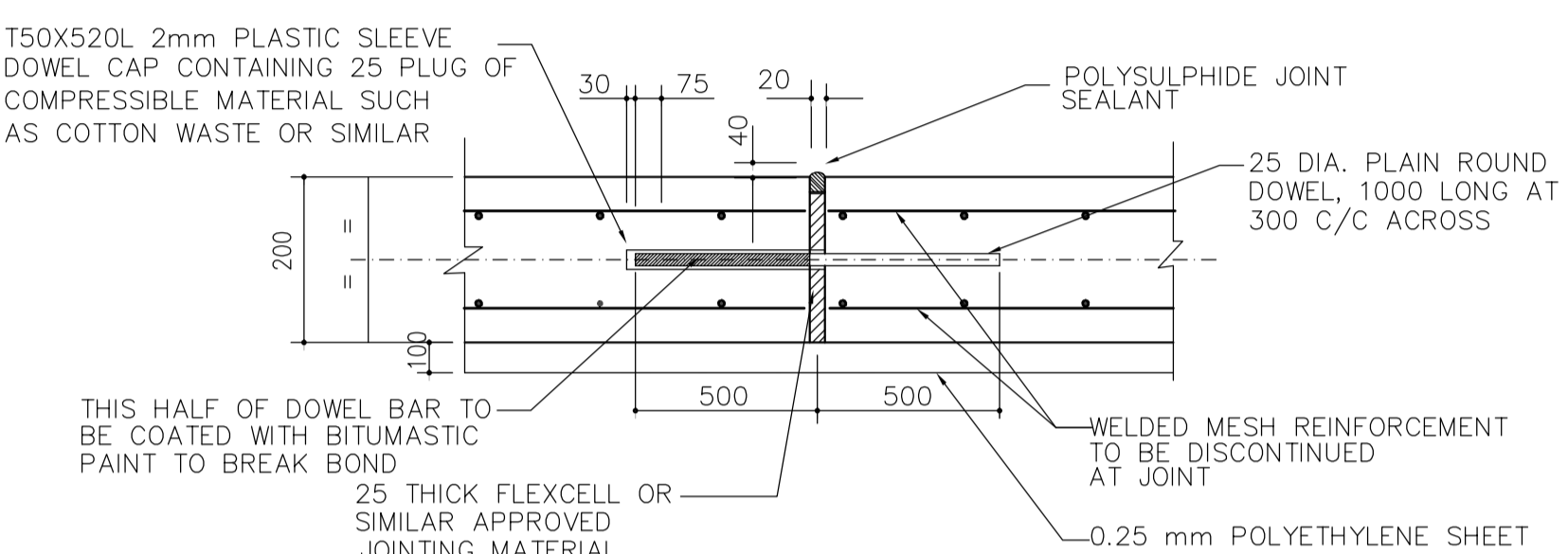
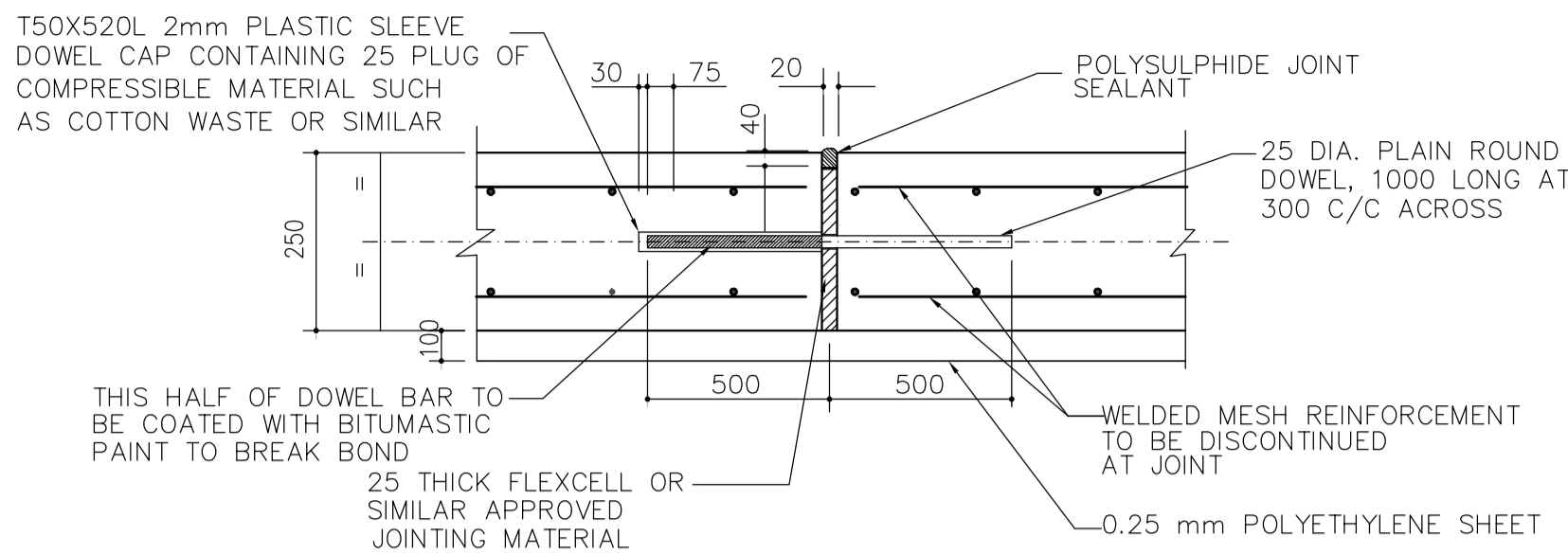
DATE	SCALE	DRAWING BY	CHECKED BY	PROJECT ENG.

**DRAWING TITLE:** STANDARD DRAWING FOR PAVINGS

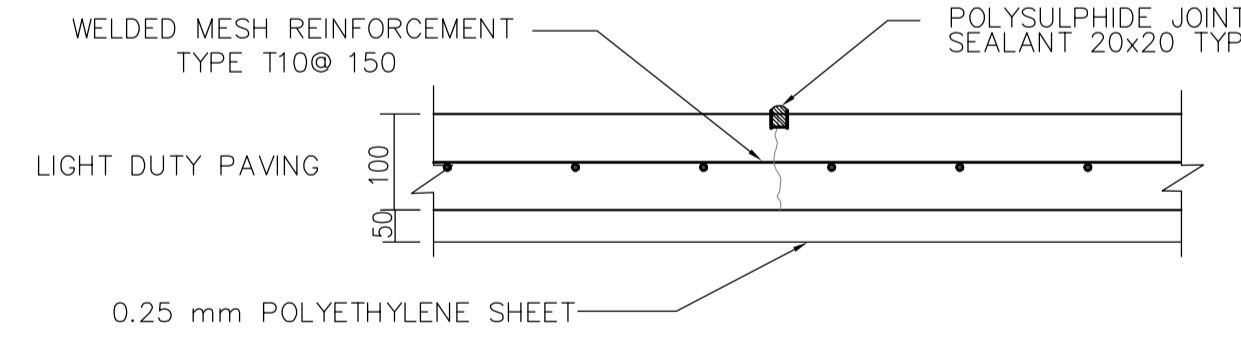
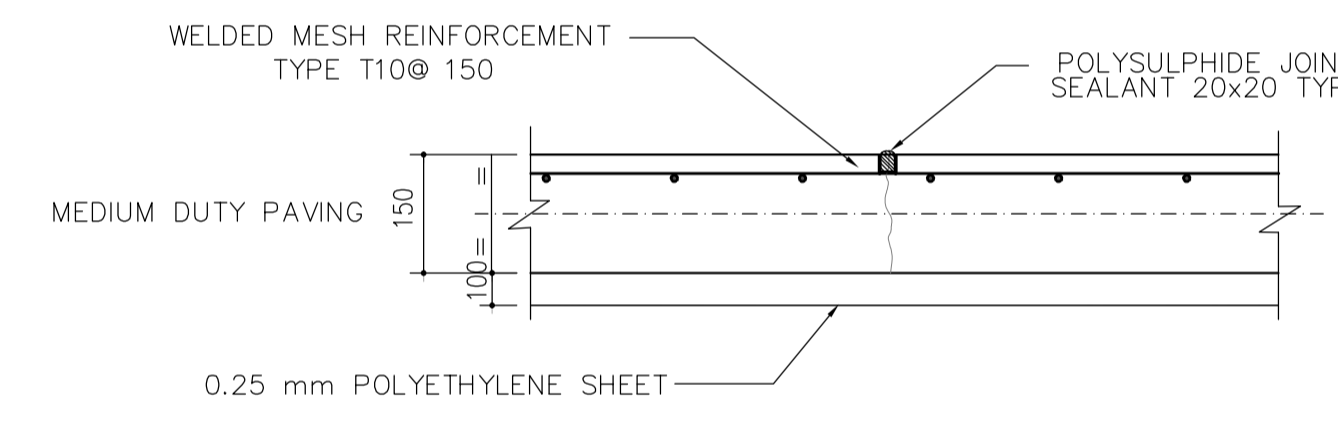
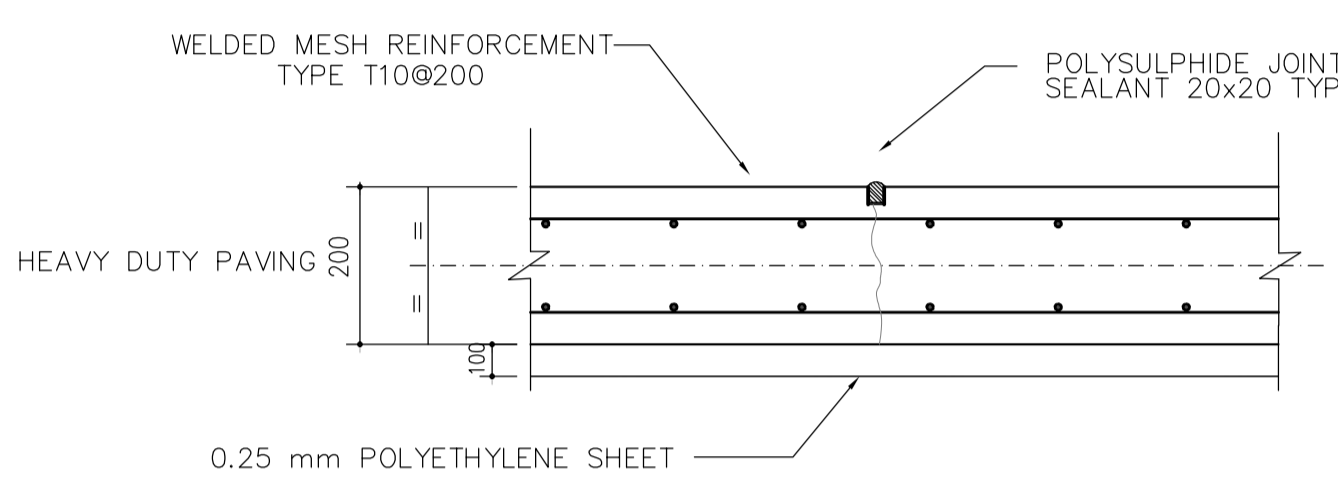
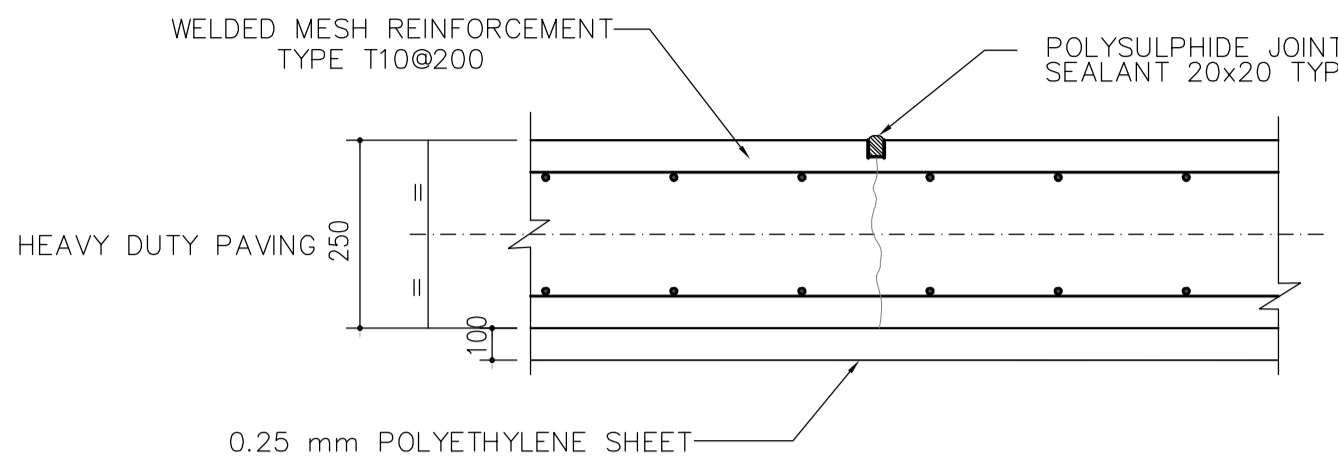
SCALE	SIZE	DRAWING NO.	SHEET NO.	REV.	BUDGET REF.	LOCATION	SIZE	CLASS	SERIAL NO.	SHEET	REVISION
AS SHOWN	A1	BK-GNRL-PEDCO-000-CV-DW-0035	01 OF 03	D02	053-073-9184	F	4	S	707282	1	D02



N.T.S. 1 PAVING CONTRACTION JOINT DETAIL



N.T.S. 2 PAVING EXPANSION JOINT DETAIL (MAX DISTANCE BETWEEN JOINTS 1800mm)



N.T.S. 3 PAVING CONSTRUCTION JOINT DETAIL

- NOTES**
- ALL DIMENSIONS ARE IN MILLIMETERS & ELEVATIONS IN METERS UNLESS OTHERWISE SPECIFIED.
  - ALL CONCRETE PAVING SHALL BE DESIGNED ACCORDING TO STRUCTURAL DESIGN CRITERIA "BK-GNRL-PEDCO-000-ST-DC-0001".
  - REFER TO ACI 504R GUIDE TO SEALING JOINTS IN CONCRETE STRUCTURES.
  - REFER TO ACI 224.3R "JOINTS IN CONCRETE CONSTRUCTION" FOR JOINT SPACING.
  - ACCORDING TO THE SPECIFICATION OF CONCRETE WORKS, 28 DAYS CHARACTERISTIC COMPRESSIVE STRENGTH OF CONCRETE IS 30 N/mm<sup>2</sup>. (ON CYLINDRICAL SPECIMEN).
  - ACCORDING TO THE SPECIFICATION OF CONCRETE WORKS, 28 DAYS CHARACTERISTIC COMPRESSIVE STRENGTH OF LEAN CONCRETE IS 10MPa. (ON CYLINDRICAL SPECIMEN).
  - REINFORCING BARS SHALL BE S400 ACCORDING TO ISRI3132, AND NBC9 WITH MINIMUM TENSILE YIELD STRENGTH 400 MPa.
  - TYPE II CEMENT SHALL BE USED UNLESS OTHERWISE INDICATED IN THE GEOTECHNICAL SITE REPORT.
  - ONE HALF DOWEL BAR FOR CONSTRUCTION JOINTS SHALL BE GREASED TO PREVENT BOND WITH CONCRETE.
  - DOWEL BARS FOR EXPANSION JOINT SHALL BE PROVIDED WITH EXPANSION CAP AND COATED WITH DE BONDING COMPOUND OR GREASE.
  - CONCRETE PAVING SHALL BE KEPT INDEPENDENT OF FOUNDATION AND PIERS WITH ISOLATION JOINT. FILL WITH JOINT FILLER AND WITH SEALANT ON ALL EXPOSED FACES:
    - 12 mm THK. JOINT: AROUND FOUNDATION SUPPORTING STRUCTURES AND STATIC EQUIPMENT.
    - 25 mm THK. JOINT: AROUND FOUNDATION SUPPORTING HEAVY VIBRATING EQUIPMENT.
  - ALL EXPANSION JOINTS SHALL BE MADE UP WITH FILLER MATERIALS AS FOLLOWS:
    - FOR PAVING: PRE-MOLDED JOINT FILLER WITH AN ELASTOMERIC OIL RESISTANT SEALER (NON EXTRUDED TYPE).
    - FOR JOINT AROUND FOUNDATION PLINTHS: "FLEX CELL" OR SIMILAR JOINT FILLER MATERIAL.
  - SEALANT MATERIALS FOR EXPANSION, CONSTRUCTION AND CONTRACTOR JOINT, SHALL BE ELASTOMERIC OIL RESISTANT SEALER SUCH AS "AEROLASTIC 1614" OR SIMILAR.
  - ALL CONCRETE PAVING SHALL BE INSTALLED ON A 0.25 mm POLYETHYLENE SHEET LAID OVER THE BASE.
  - CONCRETE PAVING SHALL BE LAID WITH A WOOD FLOAT FINISH.
  - ALL EXPOSED CORNERS SHALL BE CHAMFERED 25x25 mm.

**LEGEND**

REFERENCE DRAWING	DRG. No.
GENERAL NOTES-REINFORCED CONCRETE STRUCTURES	BK-GNRL-PEDCO-000-CV-DW-0012
SPECIFICATION FOR ROAD & PAVING	BK-GNRL-PEDCO-000-CV-SP-0002

**KEY PLAN**

REV.	DATE	DESCRIPTION	BY	DATE	BY	DATE
D02	DEC.2022	AFC	R.BERLOUE	M.FAKHARIAN	M.MEHRSHAD	***
D01	APR.2022	IFA	R.BERLOUE	M.FAKHARIAN	M.MEHRSHAD	***
D00	JAN.2022	IFC	R.BERLOUE	M.FAKHARIAN	M.MEHRSHAD	***
REV.	DATE	P.O.I.S	PREP.	CHK.	APP.	AUT.

PROJECT NAME: BINAK OILFIELD DEVELOPMENT GENERAL

PROJECT NO.: 971020

EPC CONTRACTOR: HIRGAN ENERGY

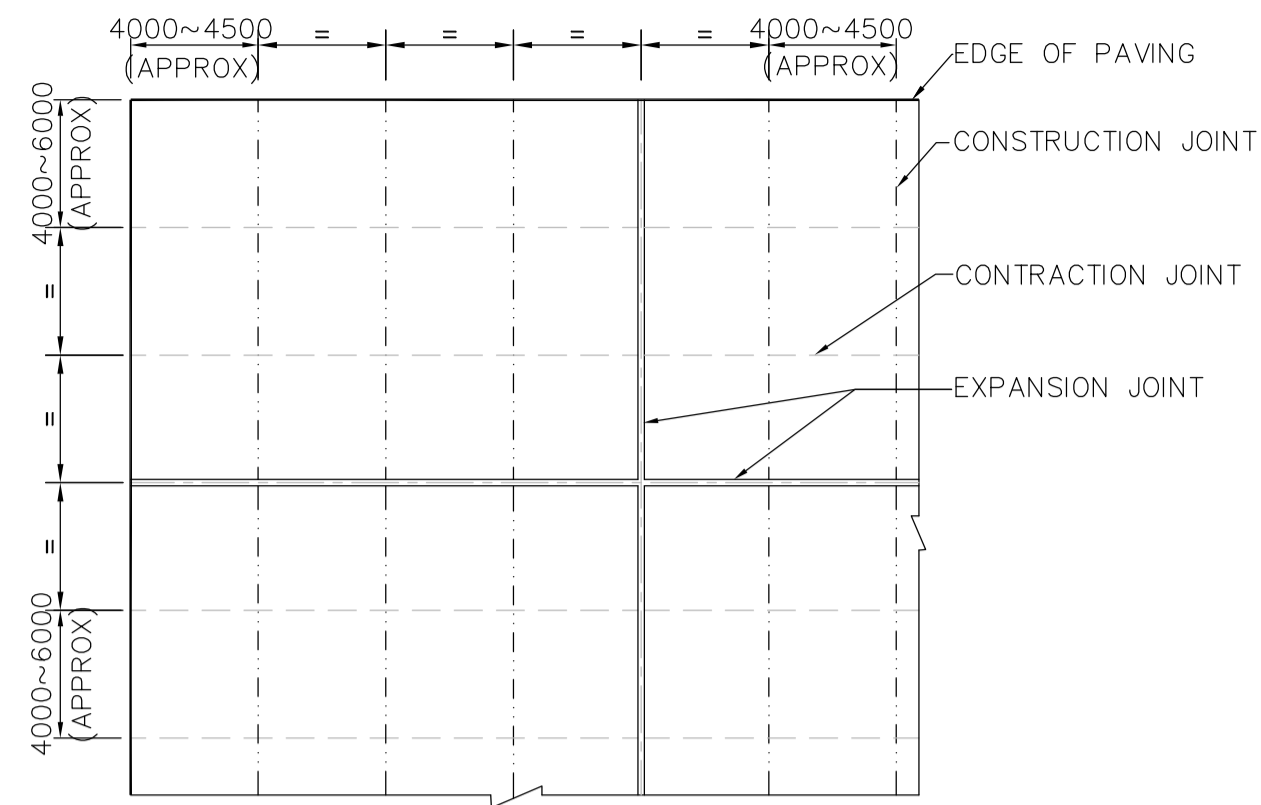
EPD/EPC CONTRACTOR (GC): PETROIRAN DEVELOPMENT COMPANY

DATE: SCALE: DRAWING BY: CHECKED BY: PROJECT ENG.

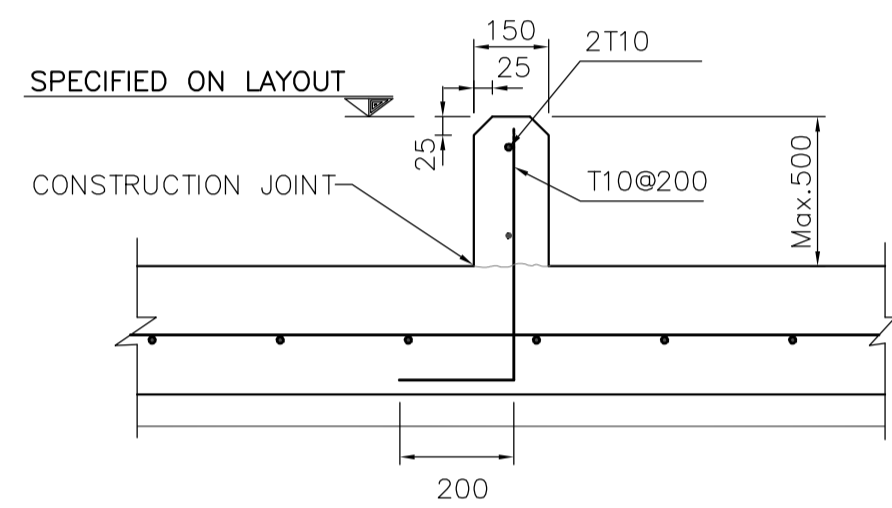
DRAWING TITLE: STANDARD DRAWING FOR PAVINGS

APPROVED FOR CONSTRUCTION BY: DATE:

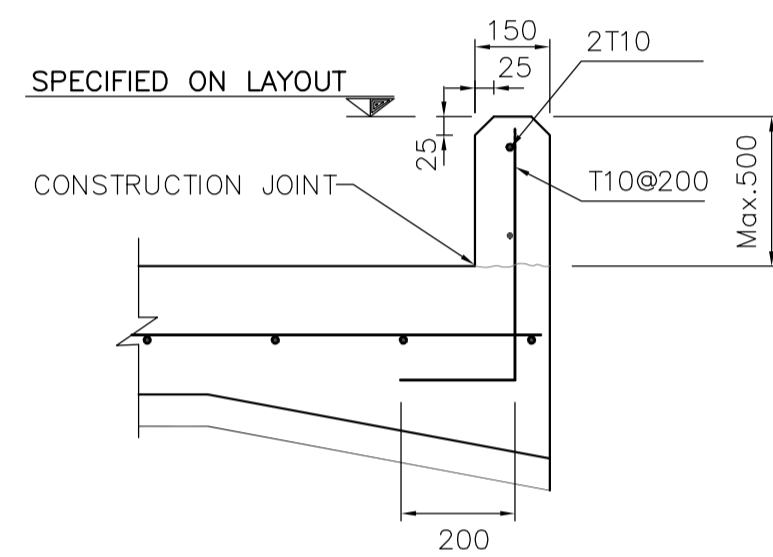
SCALE	SIZE	DRAWING NO.	SHEET NO.	REV.	BUDGET REF.	LOCATION	SIZE	CLASS	SERIAL NO.	SHEET	REVISION
AS SHOWN	A1	BK-GNRL-PEDCO-000-CV-DW-0035	02 OF 03	D02	053-073-9184	F	4	S	707282	2	D02



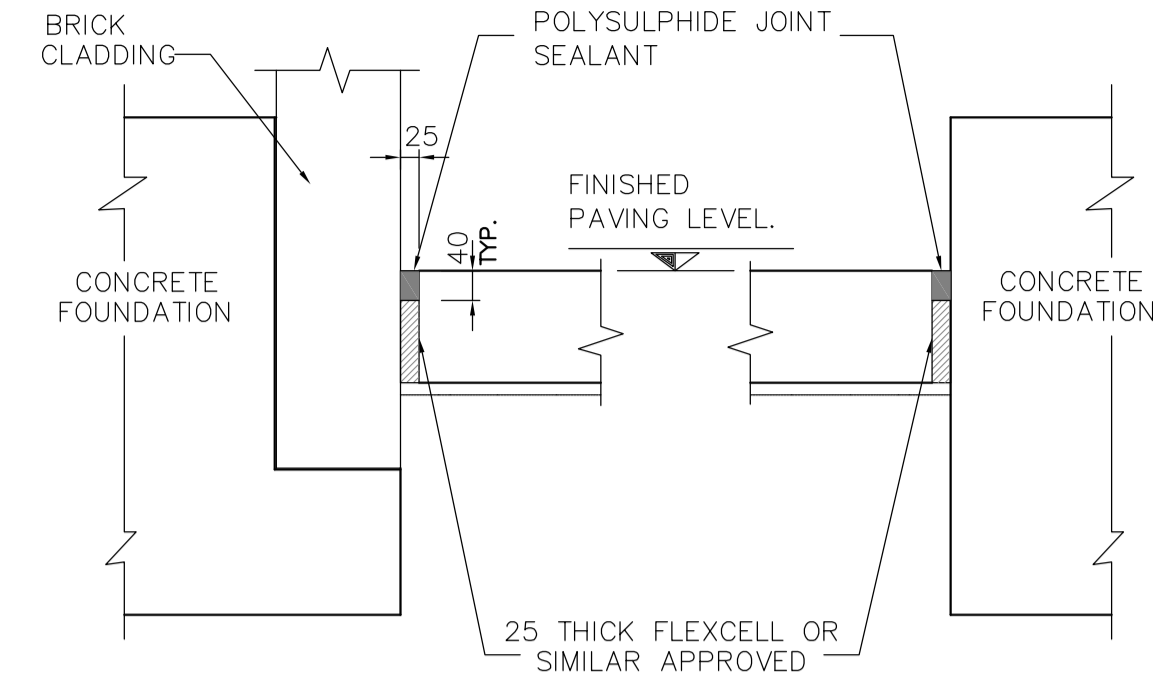
N.T.S. 1 TYPICAL JOINT ARRANGEMENT FOR CONCRETE PAVING



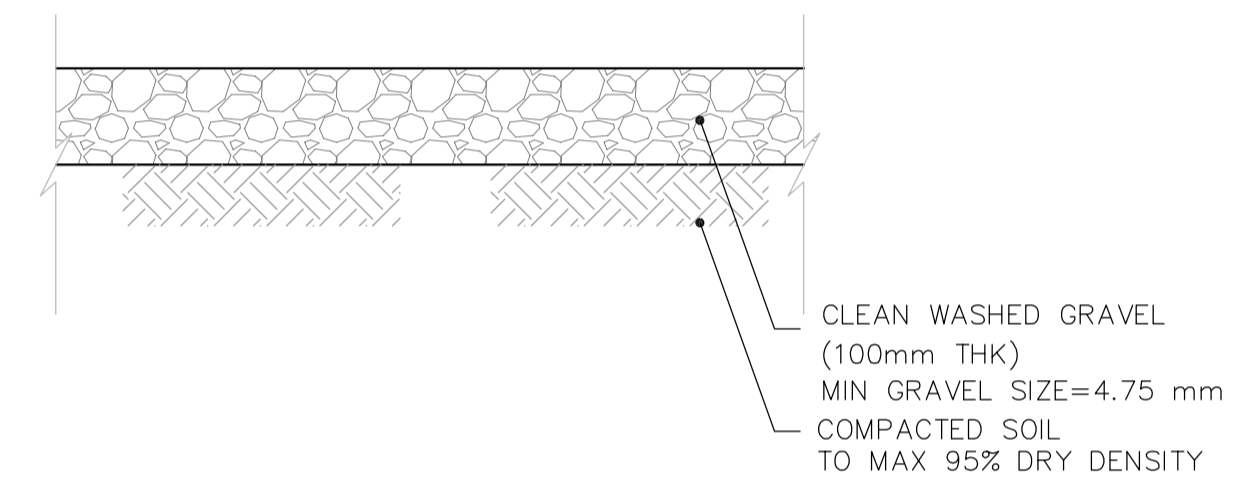
N.T.S. 3 TYPICAL CURB DETAIL ON PAVING FOR HEAVY AND MEDIUM DUTY PAVING



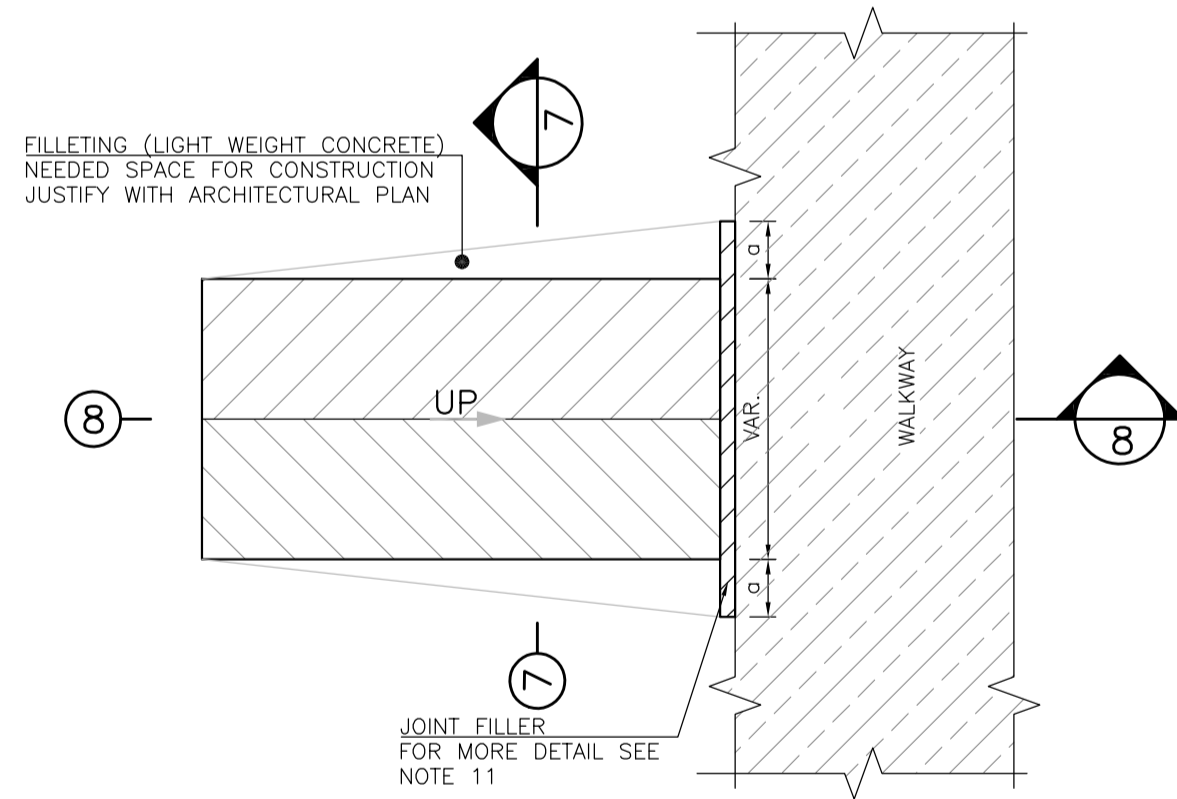
N.T.S. 4 TYPICAL CURB DETAIL ON EDGE OF PAVING FOR HEAVY AND MEDIUM DUTY PAVING



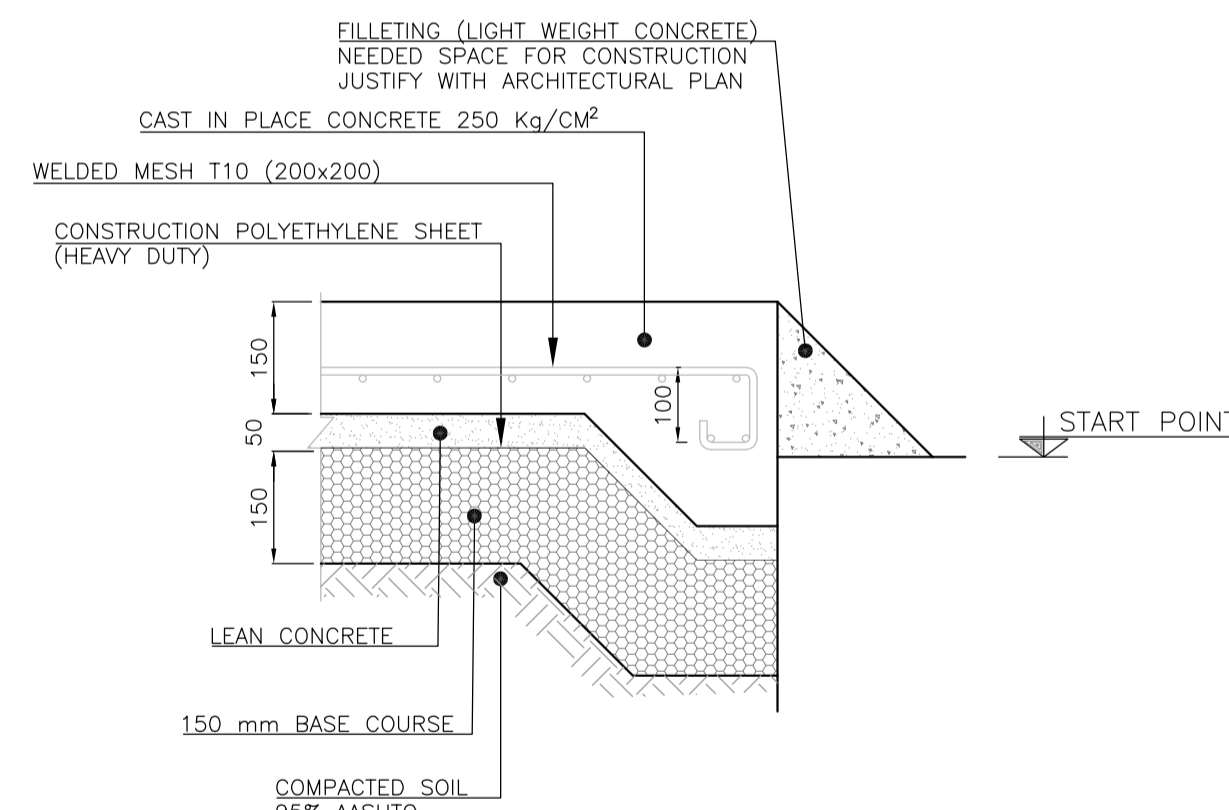
N.T.S. 2 PAVING ISOLATION JOINT PAVING TO BUILDING/FOUNDATION DETAIL



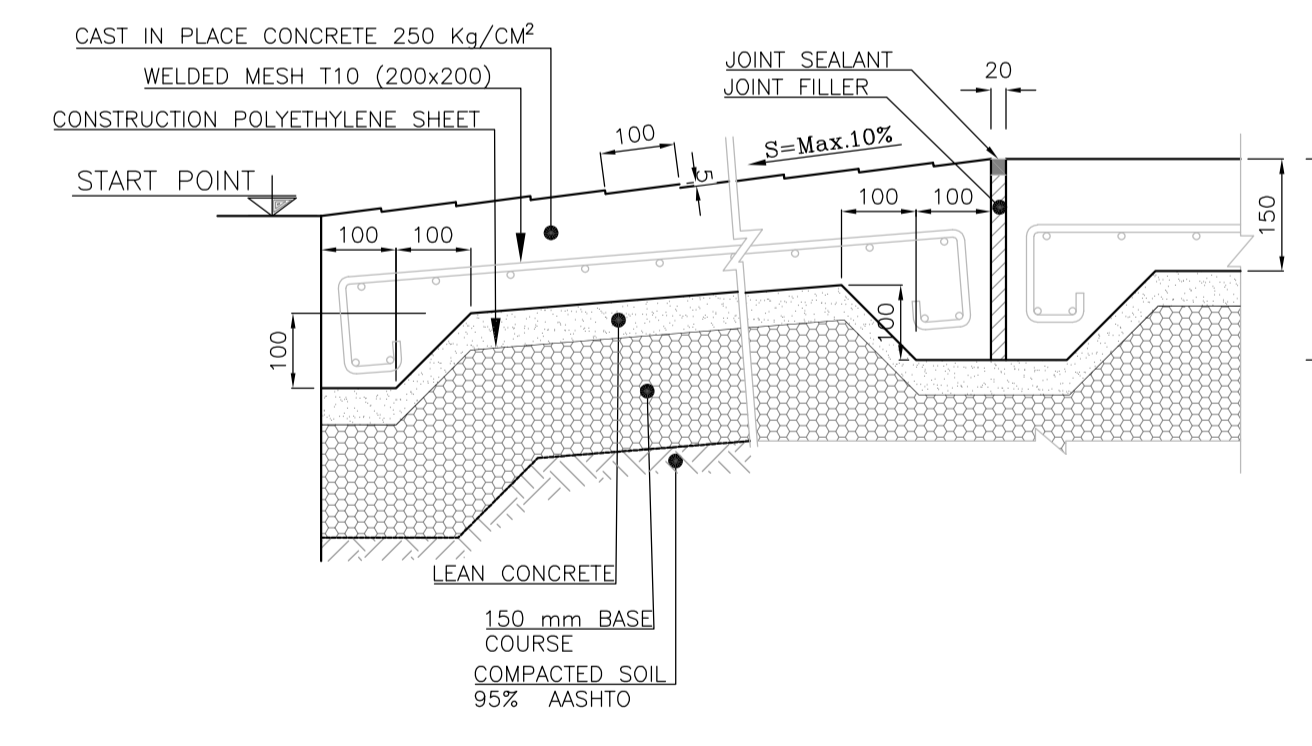
N.T.S. 5 DETAIL OF GRAVEL AREA



N.T.S. 6 TYPICAL RAMP PLAN



N.T.S. 7



N.T.S. 8

- NOTES**
- 1- ALL DIMENSIONS ARE IN MILLIMETERS & ELEVATIONS IN METERS UNLESS OTHERWISE SPECIFIED.
  - 2- ALL CONCRETE PAVING SHALL BE DESIGNED ACCORDING TO STRUCTURAL DESIGN CRITERIA "BK-GNRL-PEDCO-000-ST-DC-0001".
  - 3- REFER TO ACI 504R GUIDE TO SEALING JOINTS IN CONCRETE STRUCTURES.
  - 4- REFER TO ACI 224.3R "JOINTS IN CONCRETE CONSTRUCTION" FOR JOINT SPACING.
  - 5- ACCORDING TO THE SPECIFICATION OF CONCRETE WORKS, 28 DAYS CHARACTERISTIC COMPRESSIVE STRENGTH OF CONCRETE IS 30 N/mm<sup>2</sup>. (ON CYLINDRICAL SPECIMEN).
  - 6- ACCORDING TO THE SPECIFICATION OF CONCRETE WORKS, 28 DAYS CHARACTERISTIC COMPRESSIVE STRENGTH OF LEAN CONCRETE IS 10MPa. (ON CYLINDRICAL SPECIMEN).
  - 7- REINFORCING BARS SHALL BE S400 ACCORDING TO: ISIRI3132, AND NIBC9 WITH MINIMUM TENSILE YIELD STRENGTH 400 MPa.
  - 8- TYPE II CEMENT SHALL BE USED UNLESS OTHERWISE INDICATED IN THE GEOTECHNICAL SITE REPORT.
  - 9- ONE HALF DOWEL BAR FOR CONSTRUCTION JOINTS SHALL BE GREASED TO PREVENT BOND WITH CONCRETE.
  - 10- DOWEL BARS FOR EXPANSION JOINT SHALL BE PROVIDED WITH EXPANSION CAP AND COATED WITH DE BONDING COMPOUND OR GREASE.
  - 11- CONCRETE PAVING SHALL BE KEPT INDEPENDENT OF FOUNDATION AND PIERS WITH ISOLATION JOINT, FILL WITH JOINT FILLER AND WITH SEALANT ON ALL EXPOSED FACES:
    - A. 12 mm THK. JOINT: AROUND FOUNDATION SUPPORTING STRUCTURES AND STATIC EQUIPMENT.
    - B. 25 mm THK. JOINT: AROUND FOUNDATION SUPPORTING HEAVY VIBRATING EQUIPMENT.
  - 12- ALL EXPANSION JOINTS SHALL BE MADE UP WITH FILLER MATERIALS AS FOLLOWS:
    - A. FOR PAVING: PRE-MOLDED JOINT FILLER WITH AN ELASTOMERIC OIL RESISTANT SEALER (NON EXTRUDED TYPE).
    - B. FOR JOINT AROUND FOUNDATION PLINTHS: "FLEX CELL" OR SIMILAR JOINT FILLER MATERIAL.
  - 13- SEALANT MATERIALS FOR EXPANSION, CONSTRUCTION AND CONTRACTOR JOINT, SHALL BE ELASTOMERIC OIL RESISTANT SEALER SUCH AS "AEROLASTIC 1614" OR SIMILAR.
  - 14- ALL CONCRETE PAVING SHALL BE INSTALLED ON A 0.25 mm POLYETHYLENE SHEET LAID OVER THE BASE.
  - 15- CONCRETE PAVING SHALL BE LAID WITH A WOOD FLOAT FINISH.
  - 16- ALL EXPOSED CORNERS SHALL BE CHAMFERED 25\*25 mm.

**LEGEND**

REFERENCE DRAWING	DRG. No.
GENERAL NOTES-REINFORCED CONCRETE STRUCTURES	BK-GNRL-PEDCO-000-CV-DW-0012
SPECIFICATION FOR ROAD & PAVING	BK-GNRL-PEDCO-000-CV-SP-0002

**KEY PLAN**

REV.	DATE	DESCRIPTION	BY	DATE	BY	DATE
D02	DEC.2022	AFC	R.BERLOUE	M.FAKHARIAN	M.MEHRSHAD	***
D01	APR.2022	IFA	R.BERLOUE	M.FAKHARIAN	M.MEHRSHAD	***
D00	JAN.2022	IPC	R.BERLOUE	M.FAKHARIAN	M.MEHRSHAD	***
REV.	DATE	P.O.I.S	PREP.	CHK.	APP.	AUT.

PROJECT NAME: BINAK OILFIELD DEVELOPMENT GENERAL  
 PROJECT NO.: 971020  
 EPC CONTRACTOR: HIRGAN ENERGY, TE  
 EPD/EPC CONTRACTOR (GC): PETROIRAN DEVELOPMENT COMPANY, PEDCO

DATE: SCALE: DRAWING BY: CHECKED BY: PROJECT ENG.

DRAWING TITLE: STANDARD DRAWING FOR PAVINGS

SCALE	SIZE	DRAWING NO.	SHEET NO.	REV.	BUDGET REF.	LOCATION	SIZE	CLASS	SERIAL NO.	SHEET	REVISION
AS SHOWN	A1	BK-GNRL-PEDCO-000-CV-DW-0035	03 OF 03	D02	053-073-9184	F	4	S	707282	3	D02