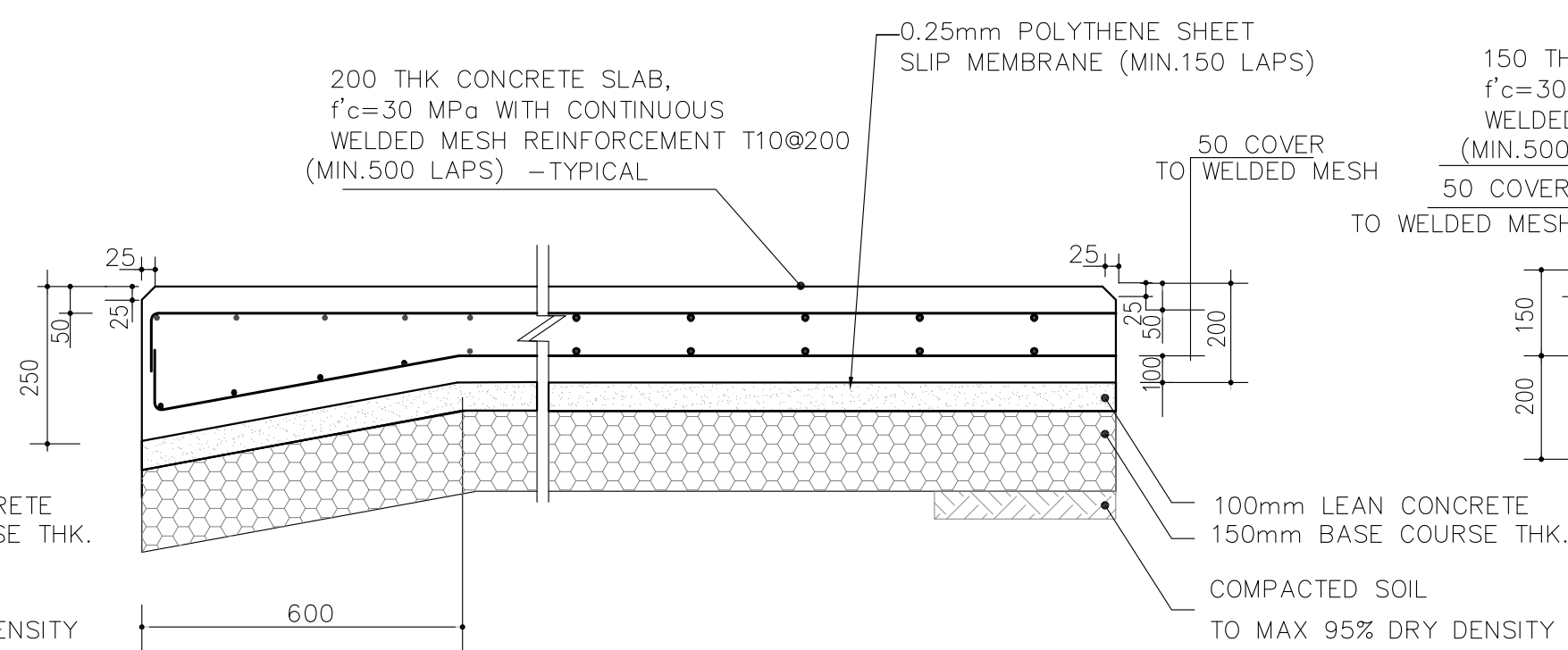


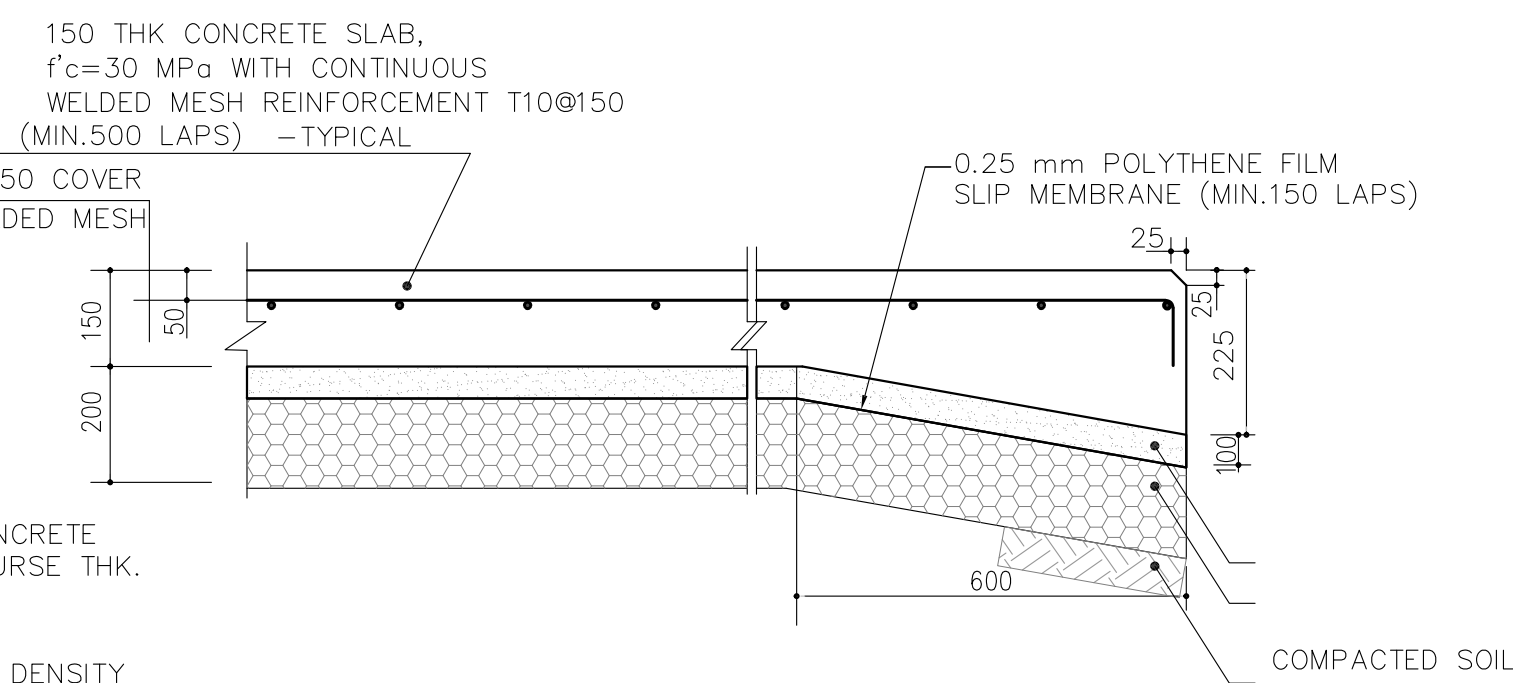
250 THK CONCRETE PAVING DETAIL

N.T.S. 1 SUPER HEAVY DUTY PAVING (FOR EDGE OF PAVING)

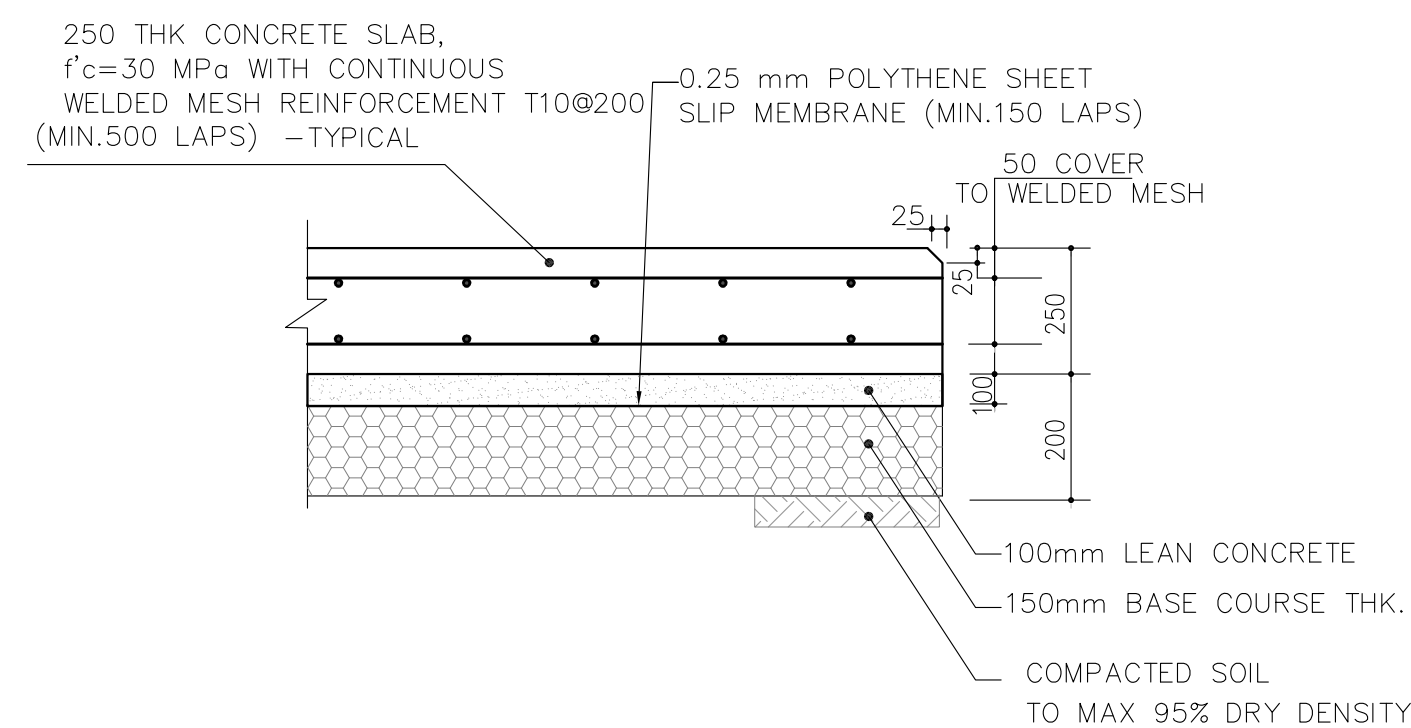


200 THK CONCRETE PAVING DETAIL

N.T.S. 2 HEAVY DUTY PAVING (FOR EDGE OF PAVING)

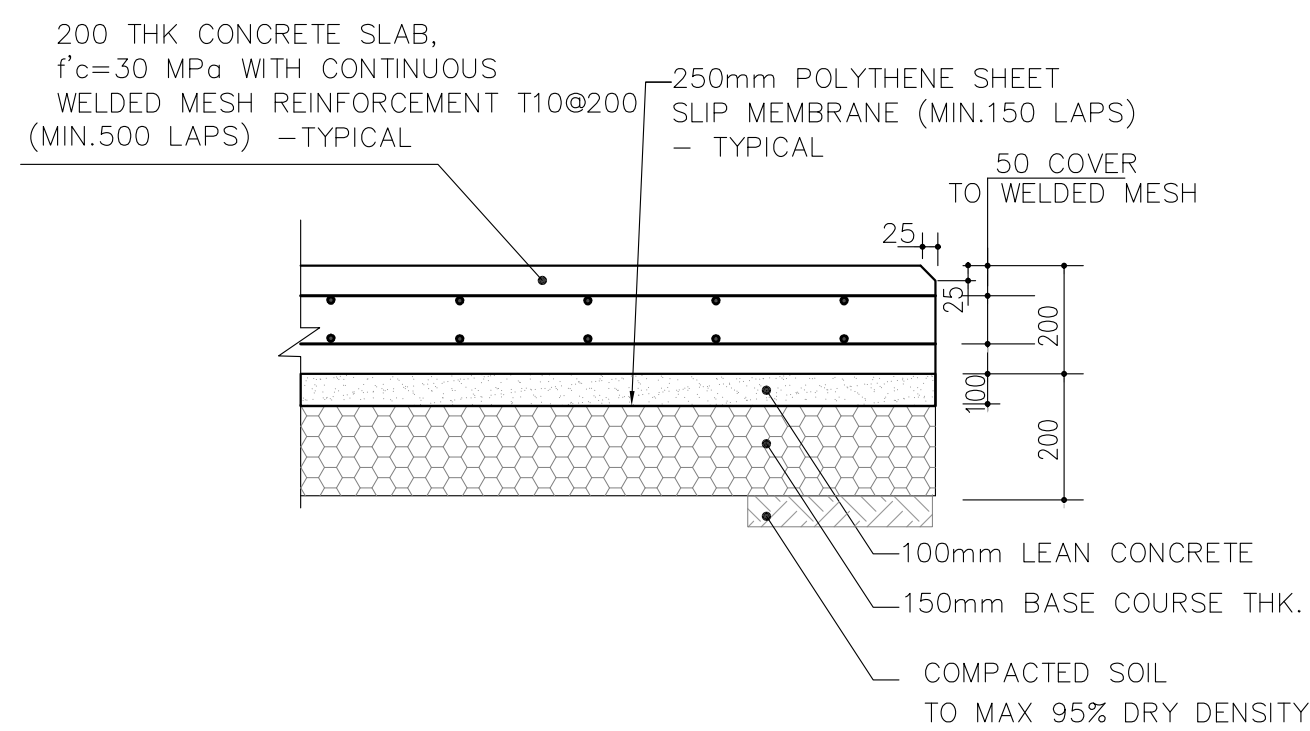


N.T.S. 3 150 THK CONCRETE PAVING DETAIL
MEDIUM DUTY PAVING (FOR EDGE OF PAVING)



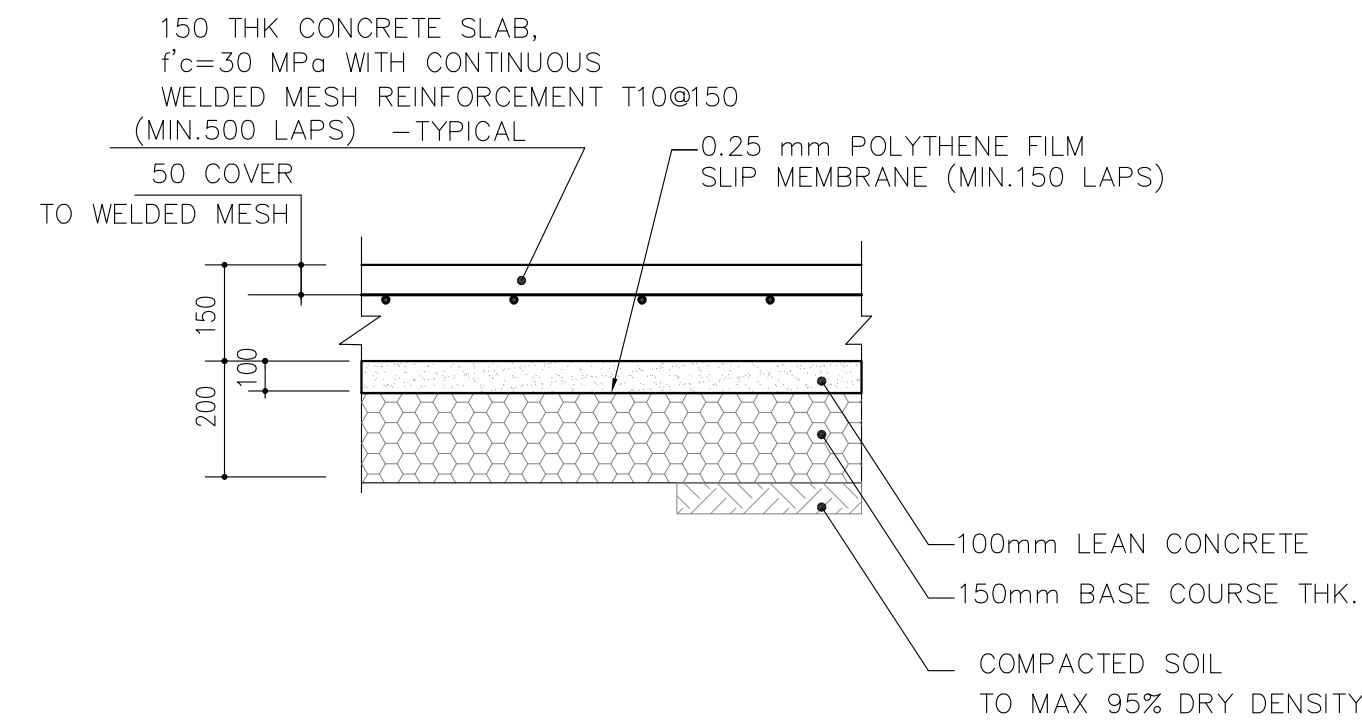
250 THK CONCRETE PAVING DETAIL

N.T.S. 4 SUPER HEAVY DUTY PAVING

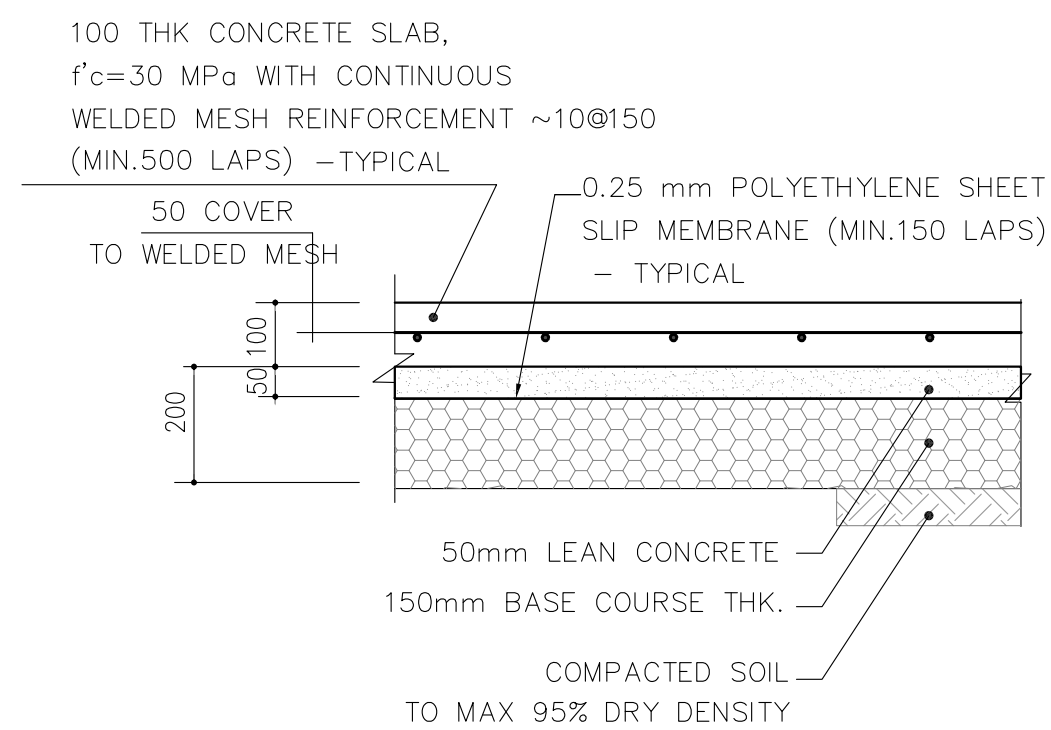


200 THK CONCRETE PAVING DETAIL

N.T.S. 5 HEAVY DUTY PAVING



150 THK CONCRETE PAVING DETAIL
MEDIUM DUTY PAVING



100 THK CONCRETE PAVING DETAIL
N.T.S. 7 LIGHT DUTY PAVING

NOTES

- 1- ALL DIMENSIONS ARE IN MILLIMETERS & ELEVATIONS IN METERS UNLESS OTHERWISE SPECIFIED.
- 2- ALL CONCRETE PAVING SHALL BE DESIGNED ACCORDING TO STRUCTURAL DESIGN CRITERIA "BK-GNRL-PECCO-000-ST-DC-0001".
- 3- REFER TO ACI 504 "GUIDE TO SEALING JOINTS IN CONCRETE STRUCTURES".
- 4- REFER TO ACI 224.3R "JOINTS IN CONCRETE CONSTRUCTION" FOR JOINT SPACING.
- 5- ACCORDING TO THE SPECIFICATION OF CONCRETE WORKS, 28 DAYS CHARACTERISTIC COMPRESSIVE STRENGTH OF CONCRETE IS 30 N/mm². (ON CYLINDRICAL SPECIMEN).
- 6- ACCORDING TO THE SPECIFICATION OF CONCRETE WORKS, 28 DAYS CHARACTERISTIC COMPRESSIVE STRENGTH OF LEAN CONCRETE IS 10MPa. (ON CYLINDRICAL SPECIMEN).
- 7- REINFORCING BARS SHALL BE S400 ACCORDING TO ISIRI3132, AND NIBC9 WITH MINIMUM TENSILE YIELD STRENGTH 400 MPa.
- 8- ACCORDING TO THE GEOTECHNICAL SITE REPORT, CEMENT TYPE WILL BE SPECIFIED.
- 9- ONE HALF DOWEL BAR FOR CONSTRUCTION JOINTS SHALL BE GREASED TO PREVENT BOND WITH CONCRETE.
- 10- DOWEL BARS FOR EXPANSION JOINT SHALL BE PROVIDED WITH EXPANSION CAP AND COATED WITH BE BONDING COMPOUND OR GREASE.
- 11 - CONCRETE PAVING SHALL BE KEPT INDEPENDENT OF FOUNDATION AND PIERS WITH ISOLATION JOINT, FILL WITH JOINT FILLER AND WITH SEALANT ON ALL EXPOSED FACES:
 - A. 12 mm THK. JOINT: AROUND FOUNDATION SUPPORTING STRUCTURES AND STATIC EQUIPMENT.
 - B. 25 mm THK. JOINT: AROUND FOUNDATION SUPPORTING HEAVY VIBRATING EQUIPMENT.
- 12- ALL EXPANSION JOINTS SHALL BE MADE UP WITH FILLER MATERIALS AS FOLLOWS:
 - A. FOR PAVING: PRE-MOLDED JOINT FILLER WITH AN ELASTOMERIC OR RESISTANT SEALER (CURVED TYPE).
 - B. FOR JOINT AROUND FOUNDATION PLINTHS: "FLEX CELL" OR SIMILAR JOINT FILLER MATERIAL.
- 13- SEALANT MATERIALS FOR EXPANSION, CONSTRUCTION AND CONTRACTOR JOINT, SHALL BE ELASTOMERIC OR RESISTANT SEALER SUCH AS "AEROLASTIC 1614" OR SIMILAR.
- 14- ALL CONCRETE PAVING SHALL BE INSTALLED ON A 0.25 mm POLYETHYLENE SHEET LAID OVER THE BASE.
- 15- CONCRETE PAVING SHALL BE LAID WITH A WOOD FLOAT FINISH.
- 16- ALL EXPOSED CORNERS SHALL BE CHAMFERED 25x25 mm.

| LEGEND | |
|---|------------------------------|
| REFERENCE DRAWING | DRG. No. |
| GENERAL NOTES- REINFORCED CONCRETE STRUCTURES | BK-GNRL-PEDCO-000-CV-DW-0012 |
| SPECIFICATION FOR ROAD & PAVING | BK-GNRL-PEDCO-000-CV-SP-0002 |
| | |

| |
|----------|
| KEY PLAN |
|----------|

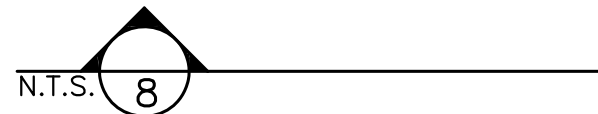
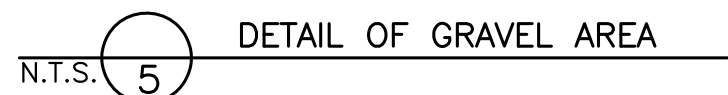
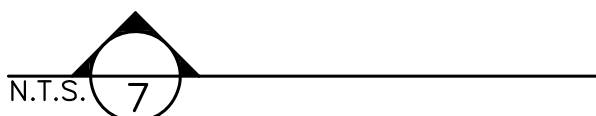
[illegible]

N.T.S. 1 PAVING CONTRACTION JOINT DETAIL

N.T.S. 2 PAVING EXPANSION JOINT DETAIL
(MAX DISTANCE BETWEEN JOINTS 1800mm)

N.T.S. 3 PAVING CONSTRUCTION JOINT DETAIL


[illegible]



NOTES

- 1- ALL DIMENSIONS ARE IN MILLIMETERS & ELEVATIONS IN METERS UNLESS OTHERWISE SPECIFIED.
- 2- ALL CONCRETE PAVING SHALL BE DESIGNED ACCORDING TO STRUCTURAL DESIGN CRITERIA "BK-NK-UNION-PECCO-000-SI-DC-0001".
- 3- REFER TO ACI 308 "GUIDE TO SEALING JOINTS IN CONCRETE STRUCTURES".
- 4- REFER TO ACI 224R "JOINTS IN CONCRETE CONSTRUCTION" FOR JOINT SPACING.
- 5- ACCORDING TO THE SPECIFICATION OF CONCRETE WORKS, 28 DAYS CHARACTERISTIC COMPRESSIVE STRENGTH OF CONCRETE IS 30 N/mm². (ON CYLINDRICAL SPECIMEN).
- 6- ACCORDING TO THE SPECIFICATION OF CONCRETE WORKS, 28 DAYS CHARACTERISTIC COMPRESSIVE STRENGTH OF LEAN CONCRETE IS 10MPa. (ON CYLINDRICAL SPECIMEN).
- 7- REINFORCING BARS SHALL BE S400 ACCORDING TO: ISIRI3132, AND NIBC9 WITH MINIMUM TENSILE YIELD STRENGTH OF 460 MPa.
- 8- TYPE II CEMENT SHALL BE USED UNLESS OTHERWISE INDICATED IN THE GEOTECHNICAL SITE REPORT.
- 9- ONE HALF DOWEL BAR FOR CONSTRUCTION JOINTS SHALL BE GREASED TO PREVENT BOND WITH CONCRETE.
- 10- DOWEL BARS FOR EXPANSION JOINT SHALL BE PROVIDED WITH EXPANSION CAP AND COATED WITH BE BONDING COMPOUND OR GREASE.
- 11- CONCRETE PAVING SHALL BE KEPT INDEPENDENT OF FOUNDATION AND PIERS WITH AN EXPANSION JOINT, FILL WITH JOINT FILLER AND WITH SEALANT ON ALL EXPOSED FACES:
 - A. 12 mm THK. JOINT: AROUND FOUNDATION SUPPORTING STRUCTURES AND SLABIC EQUIPMENT.
 - B. 25 mm THK. JOINT: AROUND FOUNDATION SUPPORTING HEAVY VIBRATING EQUIPMENT.
- 12- ALL EXPANSION JOINTS SHALL BE MADE UP WITH FILLER MATERIALS AS FOLLOWS:
 - A. 12 mm PAVING: PRE-MOLDED JOINT FILLER WITH AN ELASTOMERIC LO RESISTANT SEALER(NON EXTRUDED TYPE)
 - B. FOR JOINT AROUND FOUNDATION PLINTHS:(FLEX CELL) OR SIMILAR JOINT FILLER MATERIAL.
- 13- SEALANT MATERIALS FOR EXPANSION, CONSTRUCTION AND CONTRACTOR JOINT, SHALL BE ELASTOMERIC LO RESISTANT SEALER SUCH AS "AEROLASTIC 1614" OR SIMILAR.
- 14- ALL CONCRETE PAVING SHALL BE INSTALLED ON A 0.25 mm POLYETHYLENE SHEET LAID OVER THE BASE.
- 15- CONCRETE PAVING SHALL BE LAID WITH A WOOD FLOOR FINISH.
- 16- ALL EXPOSED CORNERS SHALL BE CHAMFERED 25x25 mm.

| LEGEND | |
|--|------------------------------|
| | |
| REFERENCE DRAWING | DRG. No. |
| GENERAL NOTES-REINFORCED CONCRETE STRUCTURES | BK-GNRL-PEDCO-000-CV-DW-0012 |
| SPECIFICATION FOR ROAD & PAVING | BK-GNRL-PEDCO-000-CV-SP-0002 |
| | |

| KEY PLAN | | | | | | |
|--|-------------|------------|------------|--------------|-------|----------|
| | | | | | | |
| *** | ***** | *** | ***** | *** | ***** | ***** |
| REV. | DESCRIPTION | BY | DATE | BY | DATE | DATE |
| | | CHECKED | | REV. APPR. | | |
| اصل و کلیه نسخ این نقشه و حق اقتباس متعلق به شرکت ملی مناطق نفت خیز جنوب میباشد. | | | | | | |
|  THE ORIGINAL AND ALL COPIES OF THIS DRAWING TOGETHER WITH THE COPYRIGHT THEREIN ARE THE SOLE PROPERTY OF N.I.S.O.C./ FIELDS | | | | | | |
| BINAK OILFIELD DEVELOPMENT GENERAL | | | | | | |
| DATE | SCALE | DRAWING BY | CHECKED BY | PROJECT ENG. | | |
| | | | | | | |
| NO CONSTRUCTION PERMITTED UNLESS DRAWING APPROVED | | | | | | |
| APPROVED FOR CONSTRUCTION | | | | BY: | | DATE: |
| BUDGET REF. | LOCATION | SIZE | CLASS | SERIAL NO. | SHEET | REVISION |
| 053-073-9184 | F | 4 | S | 707262 | 3 | D02 |