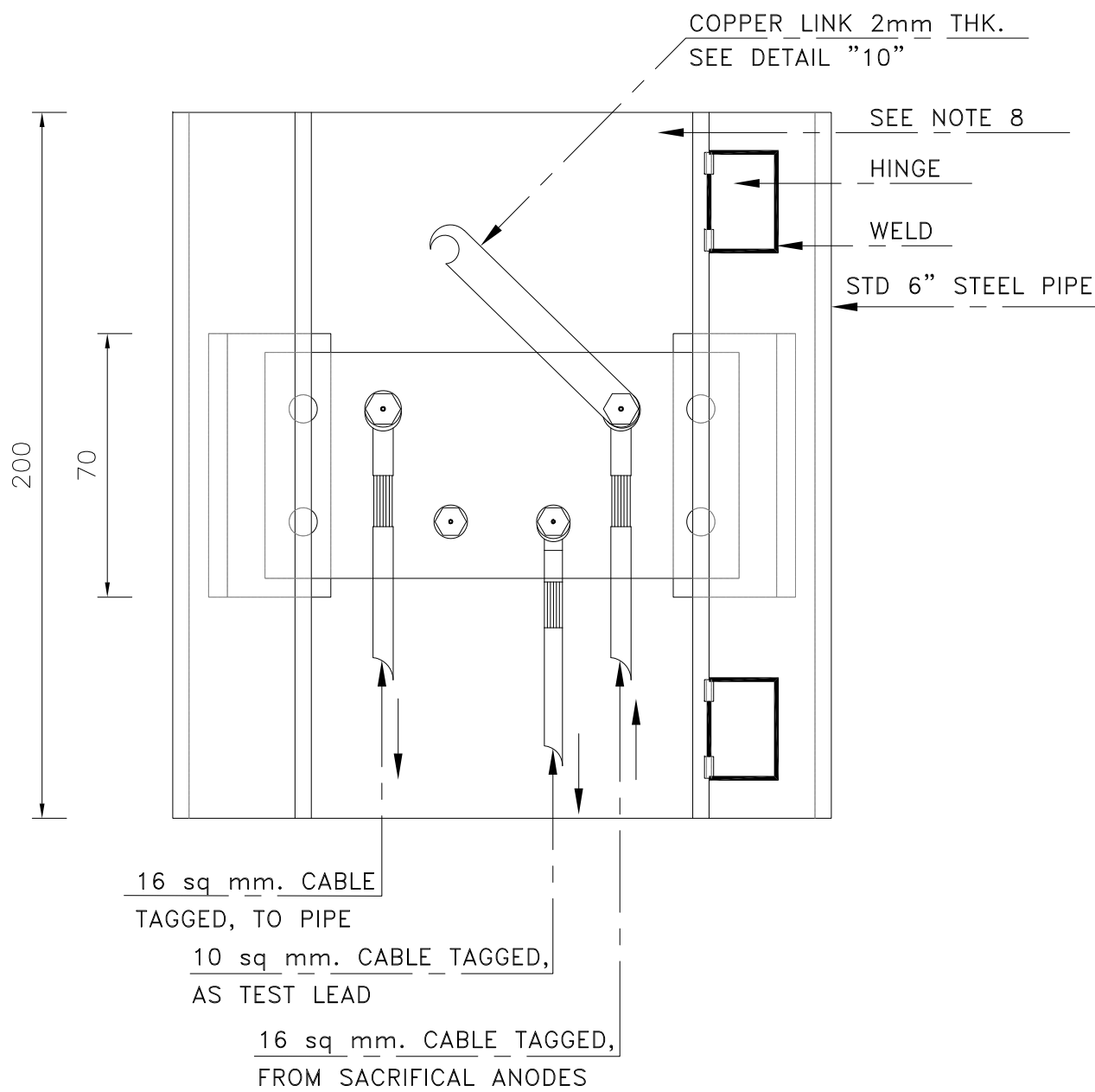
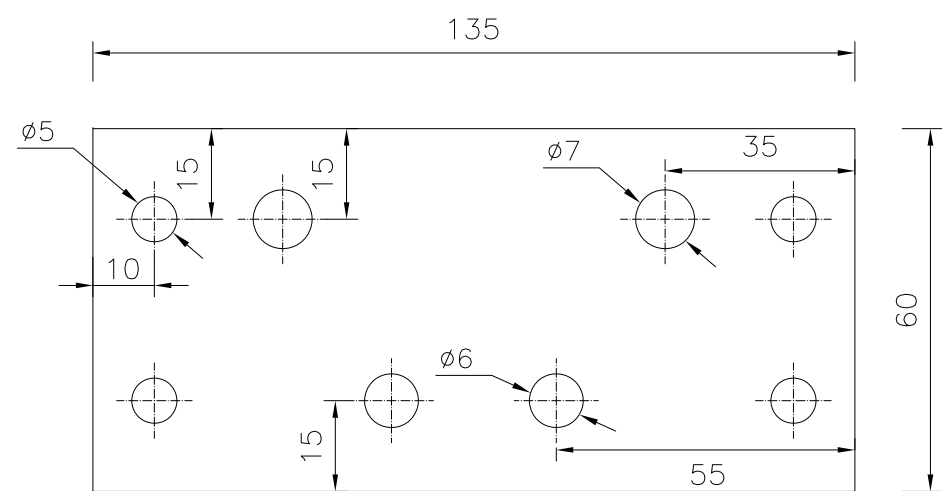


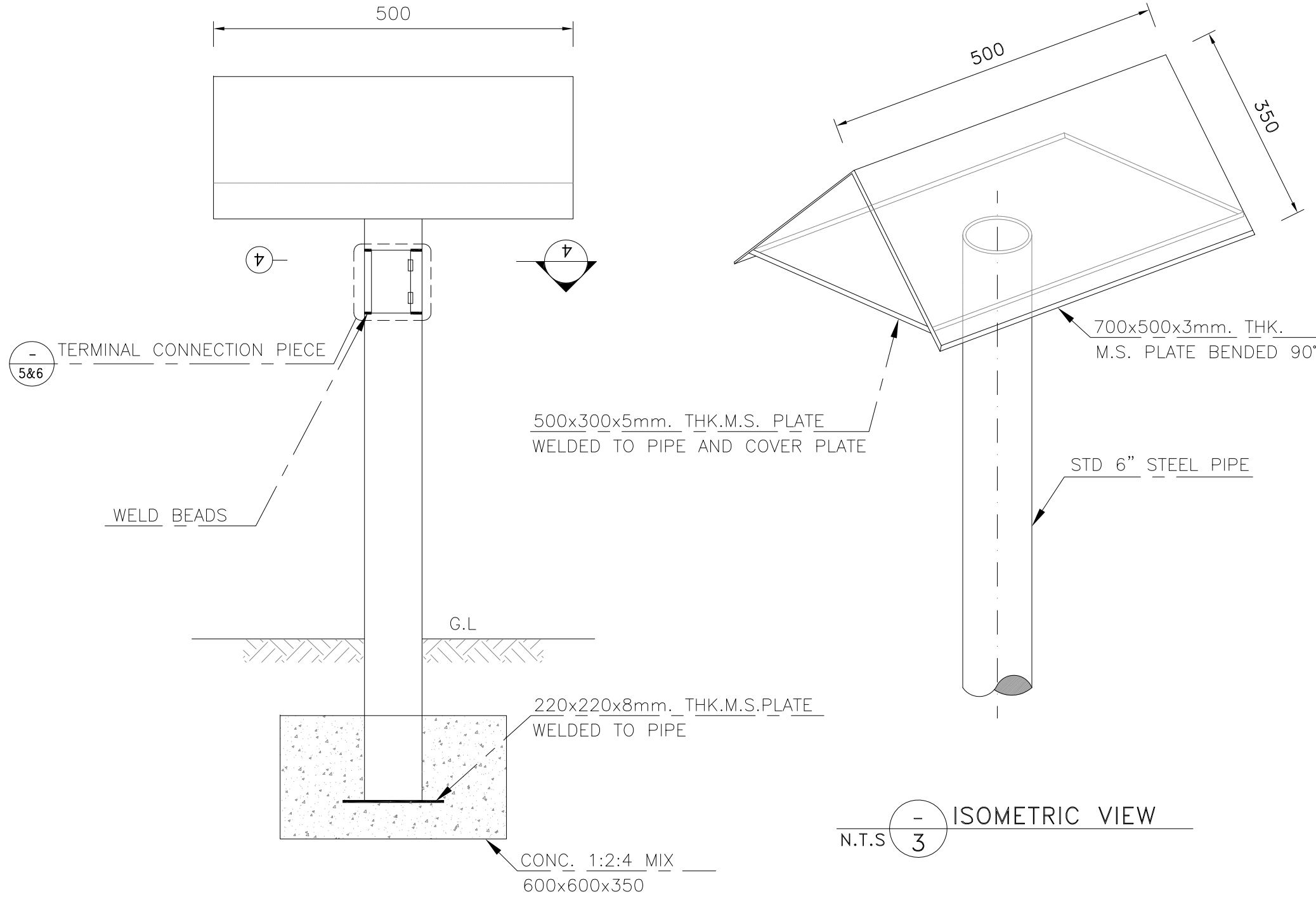
1 POST MARKER ORIENTATION AND PRINT-OUT



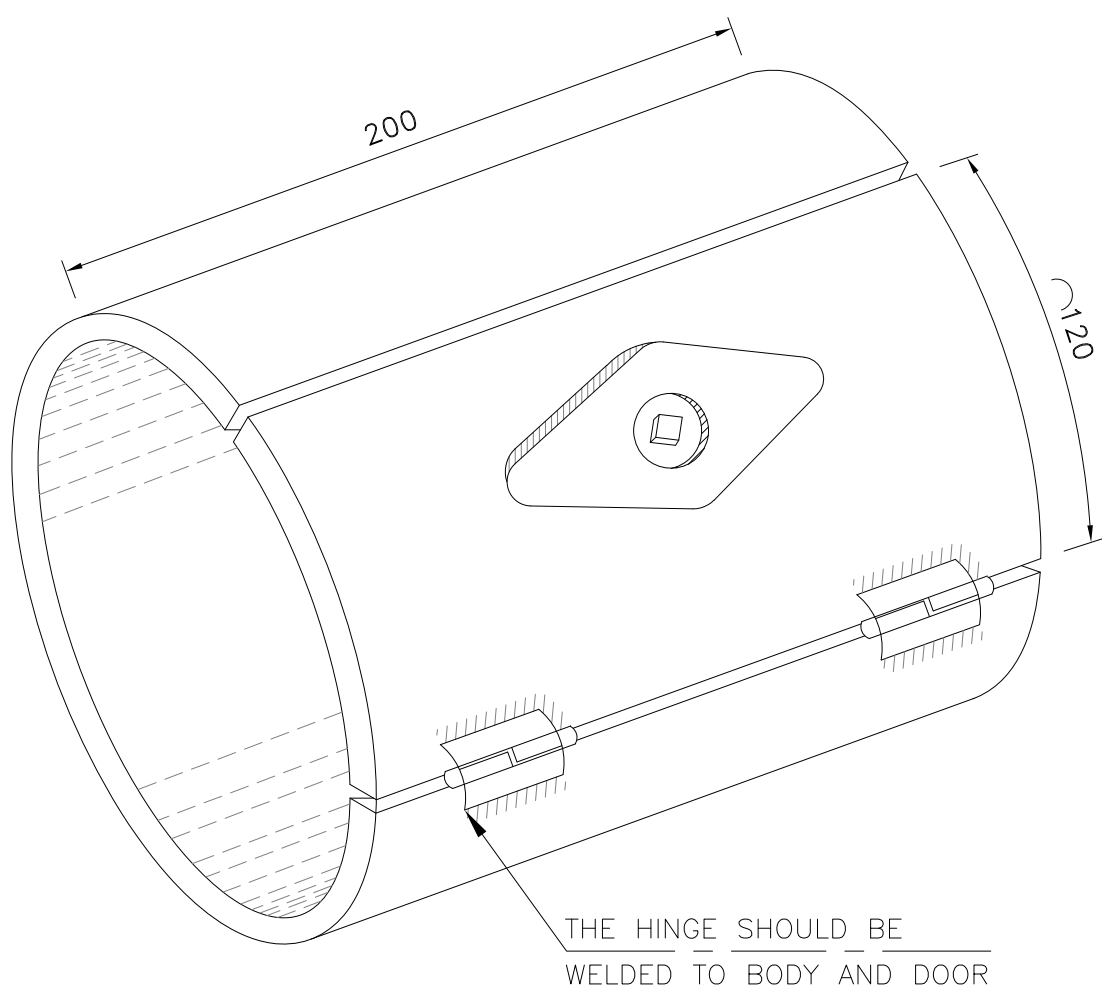
5



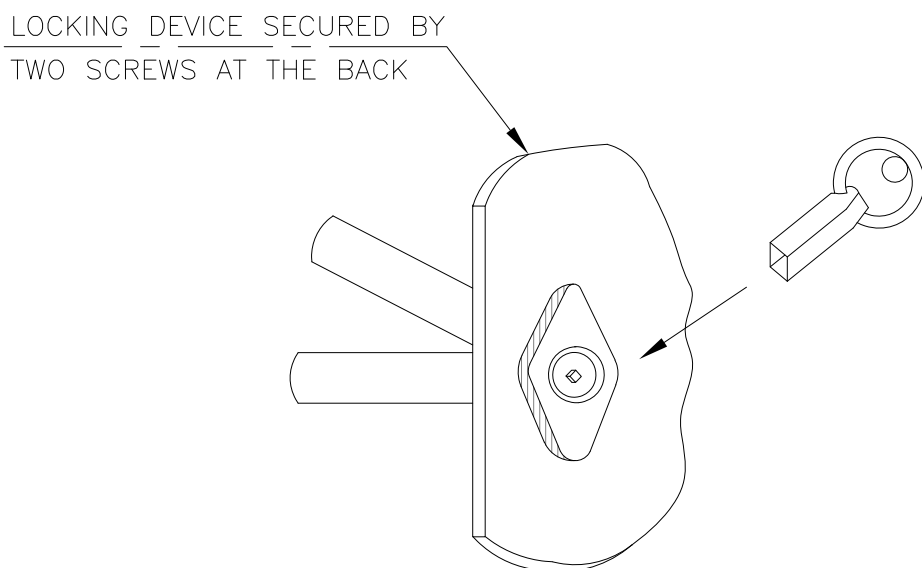
8 VULCANIZED FIBER SHEET (135x60x6mm)



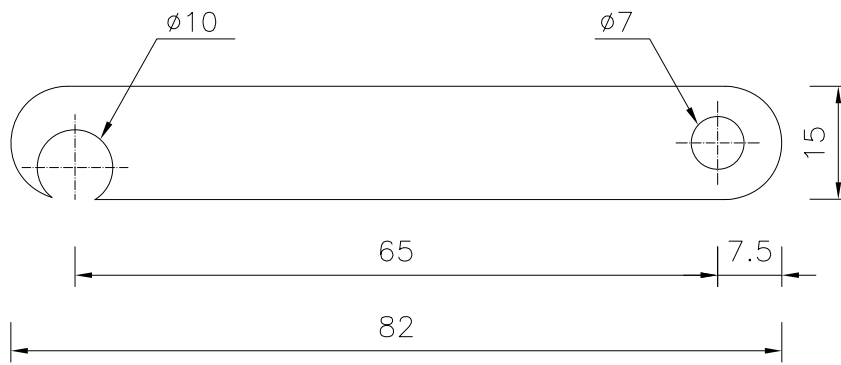
2 FRONT VIEW



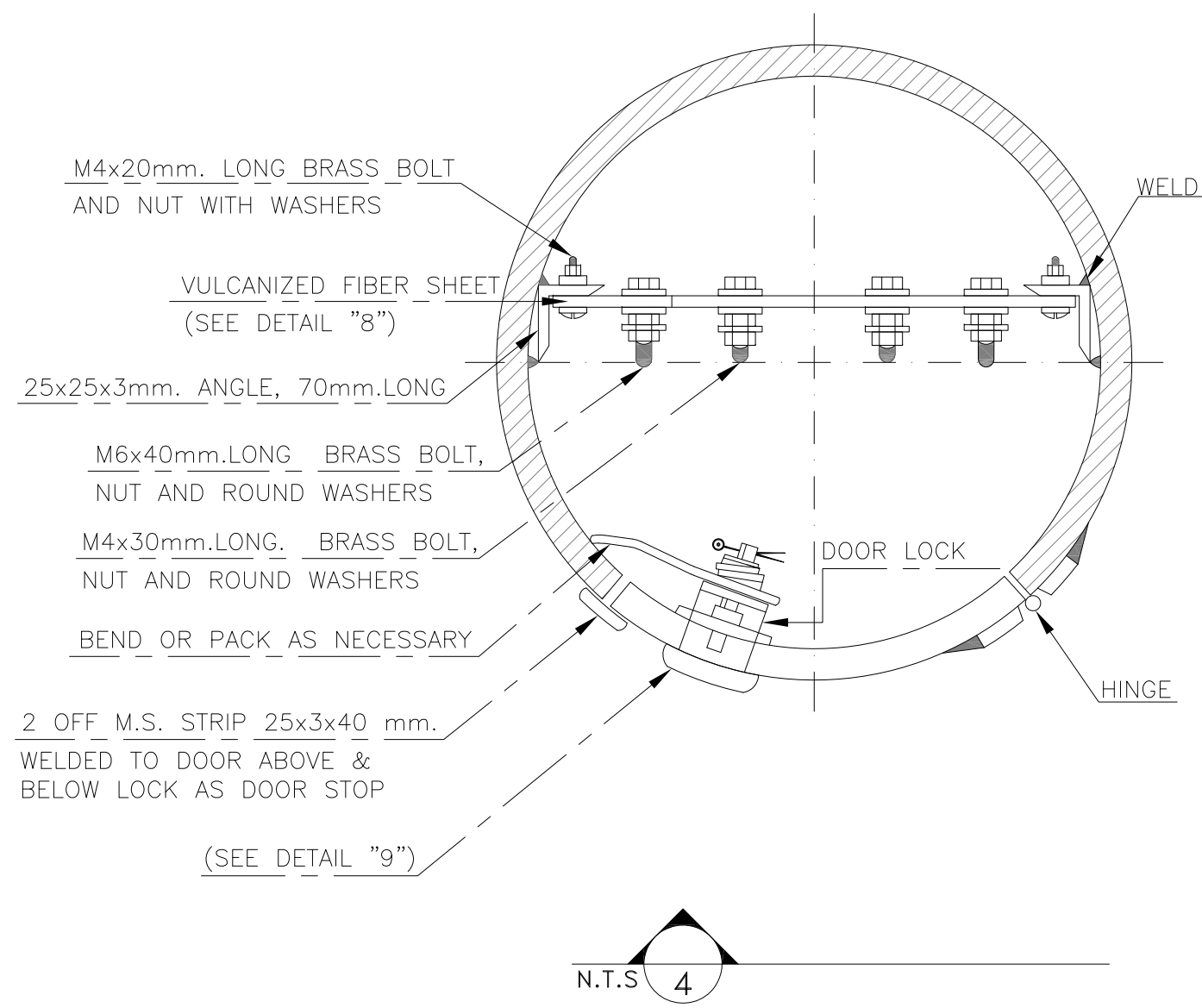
6 ISOMETRIC VIEW OF TERMINAL CONNECTION PIECE WITH ITS DOOR AND LOCKING DEVICE





9



10



7 LINE MARKER AT INTERSECTION POINTS TOWARDS FLOW DIRECTION

D03	DEC.2022	AFC	R.BERLOUIE	M.PAKHARIAN	M.MEHRSHAD	***
D02	AUG.2022	IFA	R.BERLOUIE	M.PAKHARIAN	M.MEHRSHAD	***
D01	DEC.2021	IFA	R.BERLOUIE	M.PAKHARIAN	M.MEHRSHAD	***
D00	SEP.2021	IFC	M.ASHARNEAD	M.PAKHARIAN	SH.GHALIKAR	***
REV.	DATE	P.O.I.S	PREP.	CHK.	APP.	AUT.
PROJECT NAME:			BINAK OILFIELD DEVELOPMENT GENERAL			
PROJECT NO.:			971020			
EPC CONTRACTOR:			EPD/EPC CONTRACTOR (GC):			
<div> HIRGAN ENERGY – DESIGN & INSPECTION COMPANIES</div>			<div> PETROIRAN DEVELOPMENT COMPANY</div>			
DRAWING TITLE: PIPELINE STANDARD DRAWING FOR LINE MARKER						
SCALE	SIZE	DRAWING NO.			SHEET NO.	REV.
N.T.S	A1	BK-GNRL-PEDCO-000-PL-DW-0001			1 OF 1	D03

- NOTES
- PIPELINE MARKER SHOULD BE INSTALLED AT THE FOLLOWING LOCATION ALONG BURIED PIPELINES.
 - AT ONE KILOMETER INTERVAL
 - AT ALL MAJOR CHANGES IN DIRECTION OF THE PIPELINE.
 - AT BOTH SIDES OF EVERY ROAD,RAILWAY AND UNDER-WATER CROSSINGS.
 - AT CHANGES IN WALL THICKNESS OR MATERIAL.
 - AT BRANCHES.
 - AT BURIED VALVE AND FITTING SUCH AS CHECK VALVES,VENTS,DRAINS,SLUG-CATCHERS,ETC.
 - MARKING AND LETTERING ON LINE MARKER AS WELL AS TEST-POINT MARKER SHALL BE STENCILED IN BLACK PERSIAN AND ENGLISH LETTERS/NUMBERS. THE HEIGHT OF LETTERING IN BOTH PERSIAN AND ENGLISH LETTERS TO BE ADJUSTED ON THE COVER PLATE.
 - ALL DIMENSIONS ARE IN MILLIMETER UNLESS OTHER WISE INDICATED.
 - CEMENT CHARACTERISTIC WILL BE DETERMINED ACCORDING TO GEOTECHNICAL REPORT AND RECOMMENDATIONS.
 - THE MARKER PLATE AND MOUNTING PIPE SHALL BE CLEANED,PRIMED, AND PAINTED WITH THE FOLLOWING PROCEDURE.
 - SURFACE PREPARATION TO SA 2
 - ONE RED LEAD PRIMER (70 MICRONS) TO IPS-M-TP-115.
 - ONE INTERMEDIATE COAT OF ALKYD PAINT (100 MICRONS) TO IPS-M-TP-120.
 - ONE FINISHING COAT OF ALKYD GLOSSY YELLOW COLOR PAINT (100 MICRONS) TO IPS-M-TP-130; COLOR TO BS 381C, NO. 309.(TOTAL THICKNESS OF PAINTING 270 MICRONS AT LEAST)
 - CHANGES ON DIMENSIONS OF CONCRETE BASE ARE PERMITTED SUBJECT TO LOCAL SUBSOIL CONDITIONS AND APPROVAL OF SITE ENGINEER.
 - ALL BURIED METALLIC PARTS SHALL BE COATED (3MM) WITH MASTIC (IPS-M-TP-105).
 - THE DOOR IS REMOVED TO SHOW DETAIL OF THE TERMINAL BLOCK
 - THE COMBINED MARKER, TEST POINT AND BOND BOX SHALL BE USED FOR SACRIFICIAL ANODES(IPS-D-TP-711).
 - THE CABLE ENDS SHALL BE SYSTEMATICALLY TAGGED.THE TAG SHALL BE CRIMPED FOR IDENTIFICATION COLOR CODE OF THE CABLES.
 - THE LOCATION OF MARKER AT THE LEFT OF FLOW DIRECTION.

LEGEND

G.L. = GROUND LEVEL

REFERENCE DRAWING	DRG. No.
COMBINED PIPE LINE MARKER CATHODIC PROTECTION TEST POINT	S4L-6508-001
ELECTRICAL CONNECTION CATHODIC PROTECTION SYSTEM	S4L-6508-002
CATHODIC PROTECTION GROUND BED	S4L-6508-003
SPECIFICATION FOR PAINTING	BK-GNRL-PEDCO-000-PI-SP-0006

احل و کلیه نسخ این نقشه و حق اقتباس متعلق به شرکت ملی مناطق نفت خیز جنوب میباشد.
THE ORIGINAL AND ALL COPIES OF THIS DRAWING TOGETHER WITH THE COPYRIGHT THEREIN ARE THE SOLE PROPERTY OF N.I.S.O.C./ FIELDS

BINAQ OILFIELD DEVELOPMENT GENERAL				
DATE	SCALE	DRAWING BY	CHECKED BY	PROJECT ENG.
NO CONSTRUCTION PERMITTED UNLESS DRAWING APPROVED				
APPROVED FOR CONSTRUCTION		BY:	DATE:	
BUDGET REF.	LOCATION	SIZE CLASS	SERIAL NO.	SHEET REVISION
N.T.S	A1	BK-GNRL-PEDCO-000-PL-DW-0001	1 OF 1	D03