


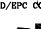
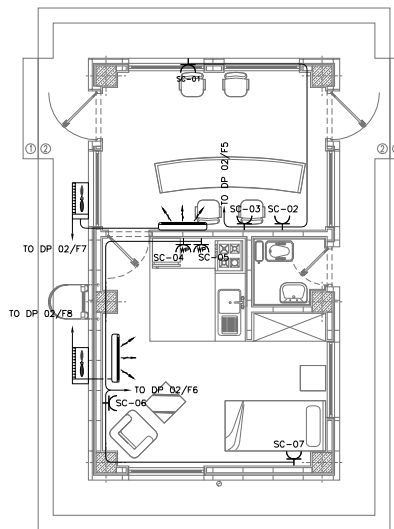
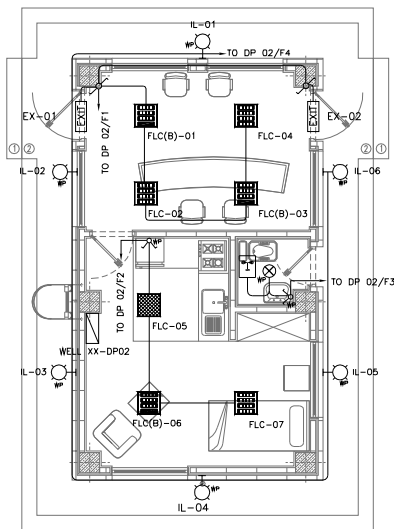


LIGHTING & SMALL POWER LAYOUT FOR SECURITY BUILDING OF WELL PADS

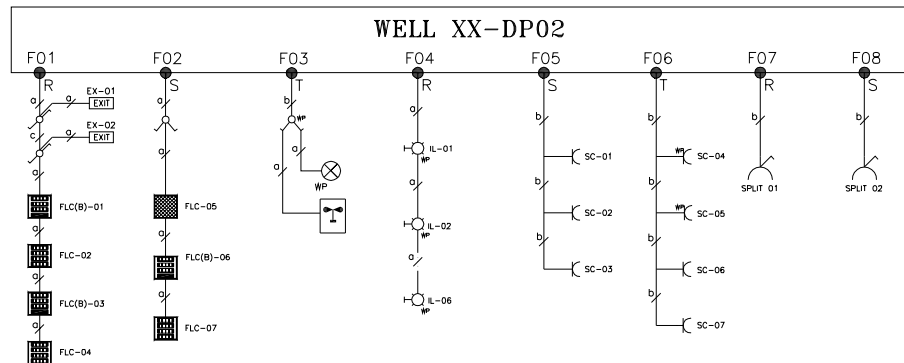
[illegible]

DOE	JAN/2003		IPA		K.SALAMAH		M.HASHIMAN		M.HUSNIDAN		9/20		000	0000000000		09/20		0000/0000		09/20							
DOI	OCT/2002		IPA		K.SALAMAH		M.HASHIMAN		M.HUSNIDAN		9/20		BY		DATE		BY		DATE								
DOE	MAY/2002		IPC		K.SALAMAH		M.HASHIMAN		M.HUSNIDAN		9/20		REV.	DESCRIPTION		CHECKED		REV.		APPR.							
REV.	DATE		P.O.L.D		PREP.		CHK.		APP.		AUT.																
PROJECT NAME: BINAK OILFIELD DEVELOPMENT/SUB-SURFACES WORK PACKAGES GENERAL																											
PROJECT NO.: 971060												 THE ORIGINAL AND ALL COPIES OF THIS DRAWING TOGETHER WITH THE COPYRIGHT THEREON ARE THE SOLE PROPERTY OF N.I.S.O.C. / FIELDS															
EPC CONTRACTOR:    PETROIRAN DEVELOPMENT COMPANY												EPD/EPC CONTRACTOR (GC): BINAK OILFIELD DEVELOPMENT SUB -SURFACE WORK PACKAGES GENERAL N.I.S.O.C. / FIELDS															
DATE												SCALE				DRAWING BY				CHECKED BY				PROJECT E			
NO CONSTRUCTION PERMITTED UNLESS DRAWING APPROVED																											
APPROVED FOR CONSTRUCTION												BY:				DATE:				REVISION							
ISCAL	SR2S		DRAWING NO.						SHEET NO.		REV.		HUGET		LOC		CLASS		SERIAL NO.		SHEET		REV.				
AS SHOWN	AS		BK-SK-REG-PRDCCO-110-E-PT-0005						01 OF 02		NOV		003-073-0164		E		D		D		707415		01 OF 02				

(VENDOR TITLE BLOCK)**



100 SECURITY GUARD ROOM
101 RESTING AREA
102 WC
103 PANTRY



#	TYPE OF CABLE	CABLE TAG
1	3X2.5mm ² , CU/PVC/PVC	a
2	3X4mm ² , CU/PVC/PVC	b
3	4X2.5mm ² , CU/PVC/PVC	c

LIGHTING FIXTURE NUMBERING PROCEDURE

X-X
SEQUENCE NUMBER
FLC: FLUORESCENT LIGHTING LAMP
FPD: FLUORESCENT PRIMATE DIFFUSER LAMP
IL: INCANDESCENT LAMP
CM: CEILING MOUNTED
EX: EXIT LIGHT
FAN: EXHAUST FAN
HB: HIGH BAY
MT: METAL HALID
SC: SOCKET
SP-SC: SPLIT SOCKET

LIGHTING FITTING	DESCRIPTION	LIGHTING FITTING	DESCRIPTION	LIGHTING FITTING
	LIGHTING FIXTURE - DOMESTIC BAY-LOW LONG LIFE FLUORESCENT LAMP WITH PLASTIC PRISMATIC DIFFUSER - HAND START TYPE, ELECTRONIC BALLASTS - CEILING RECESSED TYPE - HIGH POWER FACTOR BALLASTLESS BALL - FLUORESCENT TUBES TYP. LIGHT COLOUR 6000K/5000K/4000K/3000K/2500K/2000K/1500K/1000K/500K/0K - SINGLE POLE SWITCH - NUMBER OF LAMPS: 2 x 100 - BATTERY BACKUP 30MIN		LIGHTING FIXTURE - DOMESTIC BAY-LOW LONG LIFE FLUORESCENT LAMP WITH PLASTIC PRISMATIC DIFFUSER - HAND START TYPE, ELECTRONIC BALLASTS - CEILING RECESSED TYPE - HIGH POWER FACTOR BALLASTLESS BALL - FLUORESCENT TUBES TYP. LIGHT COLOUR 6000K/5000K/4000K/3000K/2500K/2000K/1500K/1000K/500K/0K - SINGLE POLE SWITCH - NUMBER OF LAMPS: 2 x 100 - BATTERY BACKUP 30MIN	
	LIGHTING FIXTURE - COMPACT FLUORESCENT LAMP - CEILING RECESSED MOUNTING TYPE WITH PLASTIC PRISMATIC DIFFUSER		LIGHTING FIXTURE - COMPACT FLUORESCENT LAMP - CEILING RECESSED MOUNTING TYPE WITH PLASTIC PRISMATIC DIFFUSER	

LIGHTING SCHEDULE

NOTES
1- THE MOUNTING HEIGHT OF THE FITTINGS ABOVE FINISHED FLOOR LEVEL SHALL BE AS FOLLOWS: - SOCKET OUTLET (GENERAL)= 30 Cm - SOCKET OUTLET (PANTRY)= 110 Cm - LIGHTING SWITCH =110 Cm 2- METALLIC BODY OF ALL EQUIPMENT SHOULD BE CONNECTED TO EARTH SYSTEM. 3- INDOOR DISTRIBUTION PANEL IS FLUSH MOUNTED & IP42 4- BOTTOM POINT OF WALL MOUNTED PANEL SHOULD BE 1.5m ABOVE FINISHED FLOOR. 5- CONCURRENCE FACTOR (CF) FOR CALCULATING TOTAL DEMANDED LOADS (TDL) CONSIDERED AS FOLLOWS: - FOR LIGHTING CIRCUIT CF=1 - FOR SOCKET OUTLET = 0.5 6- CABLE ENTRY TO PANEL IS FROM BOTTOM. 7- ALL CABLES SHALL BE FIXED TO PANEL BY GLAND. 8- TYPE OF THE CIRCUIT BREAKERS FOR FEEDING VARIOUS ELECTRICAL DEVICES IN DISTRIBUTION PANEL ARE AS FOLLOWS: - LIGHTING: TYPE "B" (MCB 10A) - SOCKET: TYPE "C" (RCBO 16A) - SPLIT SOCKET: TYPE "C" (RCBO 25A) 9- OUTDOOR LIGHTING AROUND BUILDING SHALL BE TURNED ON/OFF BY PHOTOCELL. 10- THIS DRAWING IS VALID FOR ALL 6 NUMBER OF WELLS NAMED AS BELOW: - WELL NUMBER BK-12 - WELL NUMBER BK-14 - WELL NUMBER BK-15 - WELL NUMBER W-007 - WELL NUMBER BK-05 - WELL NUMBER W-046 11- INDUSTRIAL BUILDING LIGHTING CABLE SHALL BE LAID IN HIDE (HOT DIP GALVANIZED) CONDUIT AND IN NON INDUSTRIAL WIRE SHALL BE LAID IN HIDE (HOT DIP GALVANIZED) CONDUIT. 12- THE POWER & CONTROL CABLE BETWEEN SPLIT UNIT & CONDENSER SHALL BE PROVIDED BY VENDOR

LEGEND
4X18 W RECESSED WITH PLASTIC PRISMATIC DIFFUSER FLUORESCENT, 60X60 MODULAR FALSE CEILING, IP65 4X18 W RECESSED METAL LOUVRE FLUORESCENT, 60X60 MODULAR FALSE CEILING, IP42 4X18 W RECESSED METAL LOUVRE FLUORESCENT, IP42 60X60 MODULAR FALSE CEILING, BATTERY BACKUP 30MIN. CEILING MOUNTED WITH MATT SMOOTH GLASS DIFFUSER, E27 18W, WATER PROOF IP65 SAFETY LIGHTING, FLUORESCENT 1x9W, WITH 30 MINUTE BUILT-IN BATTERY PACK BULKHEAD WALL MOUNTED WITH GLASS DIFFUSER & GUARD, 20W, LED, IP65 EXHAUST FAN 40W 2 WAY SWITCH, SINGLE POLE, 10A, 230V, FLUSH MOUNTED, IP42 ONE POLE, MULTIPosition SWITCH, 10A, 230V, FLUSH MOUNTED, IP42 ONE POLE, MULTIPosition SWITCH, 10A, 230V, FLUSH MOUNTED, WATER PROOF IP65 SOCKET OUTLET POWER WITH SINGLE PHASE 230V, 16A, FLUSH MOUNTED, IP42 SOCKET OUTLET POWER WITH SINGLE PHASE 230V, 16A, FLUSH MOUNTED, WATER PROOF IP65 SOCKET OUTLET (POWER) WITH SINGLE POLE SWITCH 230V, 25A, FLUSH MOUNTED, IP42 ELECTRICAL DISTRIBUTION PANEL, IP42 WELL XX-DP02: SECURITY BUILDING DISTRIBUTION PANEL CU/PVC/PVC NORMAL LINE INDOOR UNIT WALL TYPE SPLIT AIR CONDITIONER OUTDOOR UNIT SPLIT AIR CONDITIONER
RESPONSIBILITY DRAWING: ENG. No. PREPARED FOR LAYOUT & SMALL POWER SYSTEM: BK-0000-PIEDCO-110-EL-02-01-007 TYPICAL INSTALLATION DETAILS & NOTES FOR LIGHTING SYSTEM: BK-0000-PIEDCO-110-EL-02-01-008 CHECKLISTS WITH THE LIGHTING LAYOUT OF WALL, FAN, SECURITY BUILDING: BK-0000-PIEDCO-110-EL-02-01-009 ARCHITECTURAL DRAWING FOR SECURITY BUILDING OF WALL, FAN: BK-0000-PIEDCO-110-EL-02-01-004
KEY PLAN

REV.	DATE	BY	DATE	BY	DATE
REV.	DESCRIPTION	BY	DATE	BY	DATE
REV.	DATE	P.O.I.H.	PREP.	CHK.	APP.
PROJECT NAME:	BINAK OILFIELD DEVELOPMENT/ELB-RURPACTS WORK PACKAGES GENERAL				
PROJECT NO.:	971020				
EPC CONTRACTOR:	HIRSAN ENERGY - DESIGN & INSPECTION COMPANIES				
EPD/EPC CONTRACTOR (GO):	PETROIRAN DEVELOPMENT COMPANY				
DRAWING TITLE:	LIGHTING & SMALL POWER LAYOUT FOR SECURITY BUILDING OF WELL, FANS				
CLASS	SIZE	DRAWING NO.	SHEET NO.	REV.	BUDGET REF.
AS SHOWN	AS	BK-0000-PIEDCO-110-EL-PY-0005	02 OF 02	002	003-073-9104
DATE	SCALE	DRAWING BY	CHECKED BY	PROJECT ENG.	
NO CONSTRUCTION PERMITTED UNLESS DRAWING APPROVED					
APPROVED FOR CONSTRUCTION BY: DATE:					
REVISION	REVISION	REVISION	REVISION	REVISION	REVISION