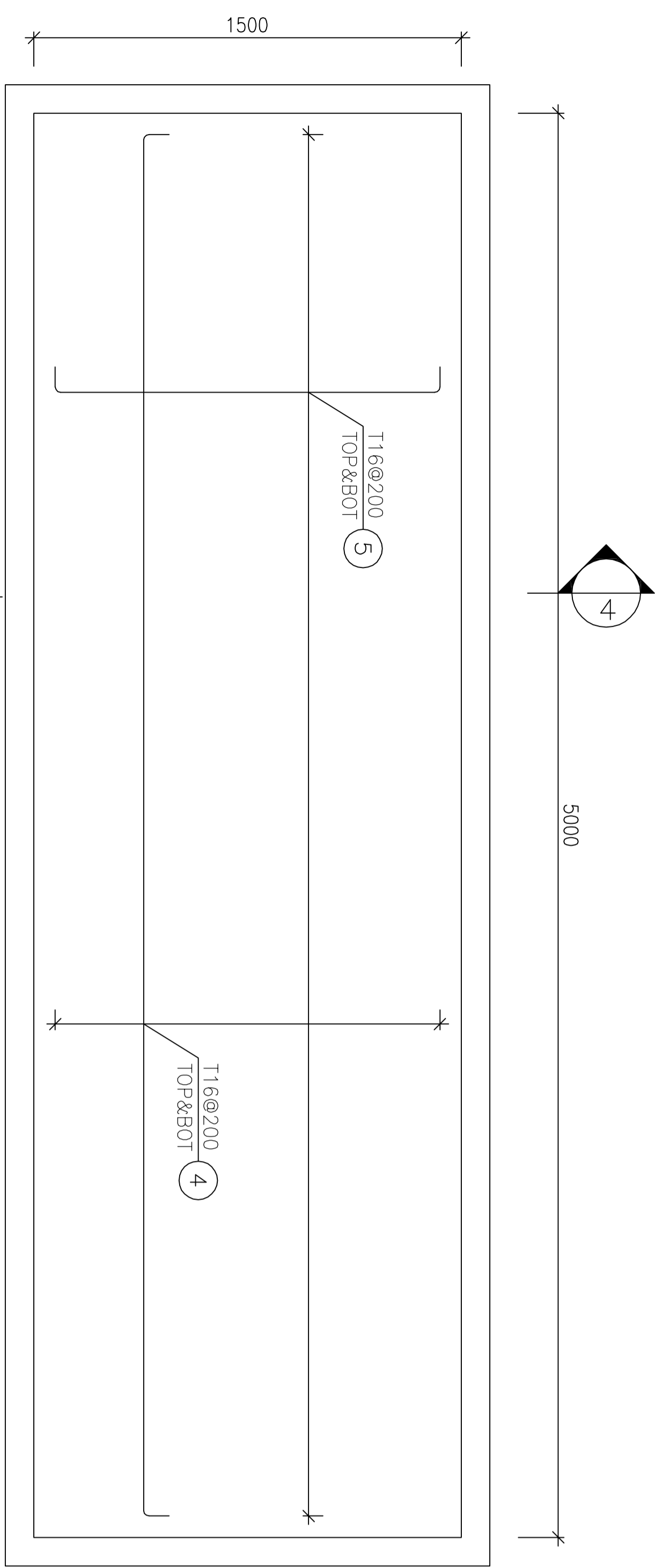
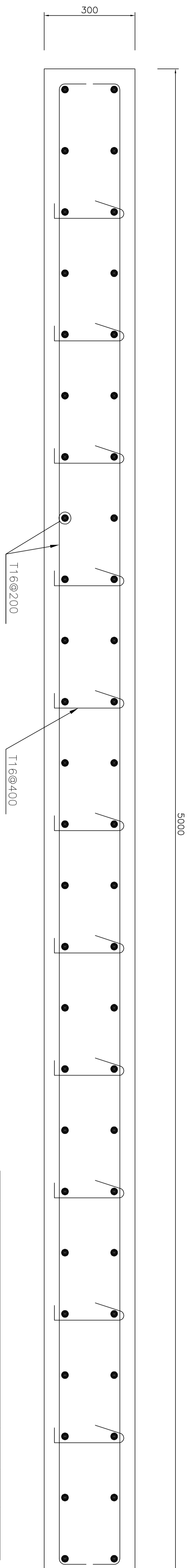


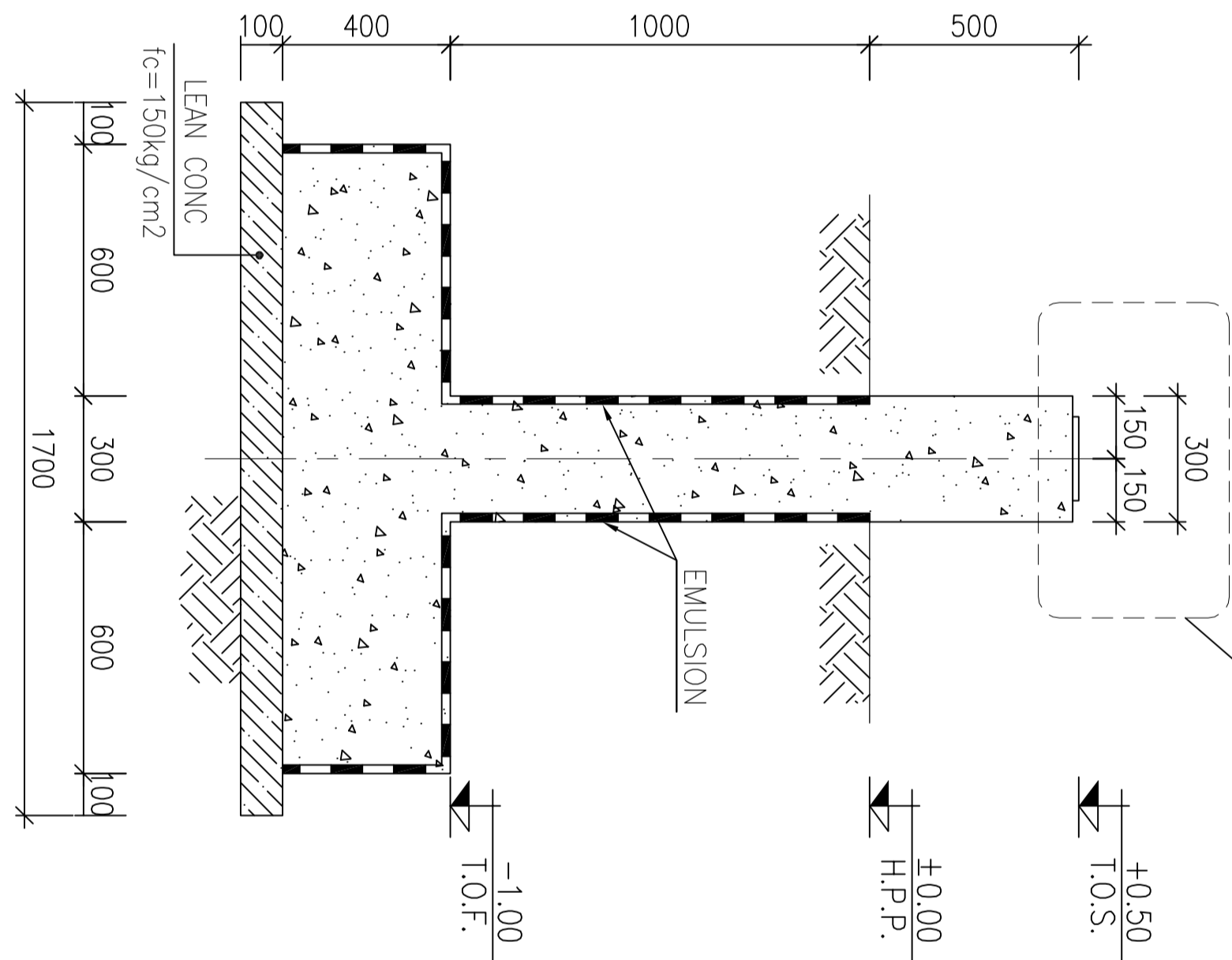
1:20 FOUNDATION FORMWORK PLAN
PIPE SLEEPERS TYPE A (NO. : 31)



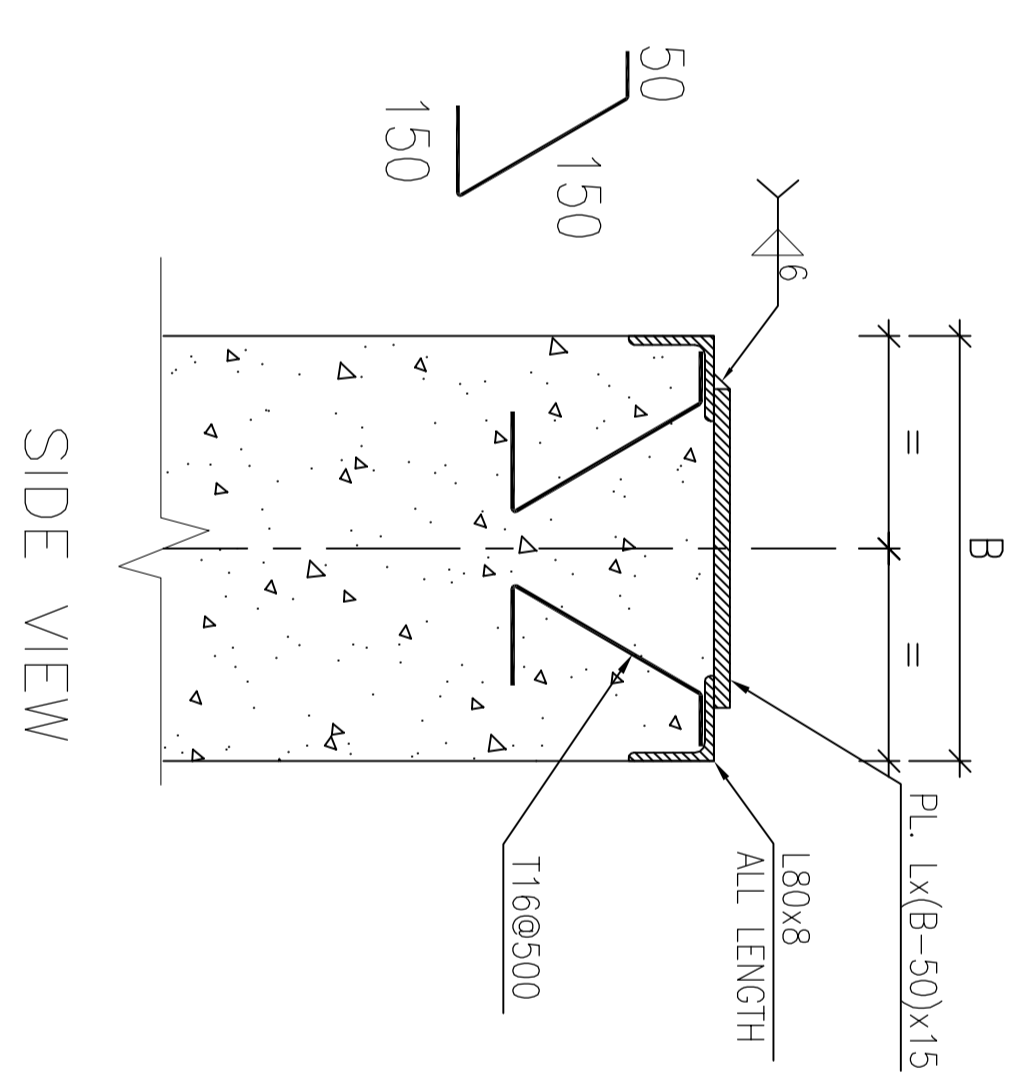
1:20 FOUNDATION REINFORCEMENT PLAN
PIPE SLEEPERS TYPE A (NO. : 31)



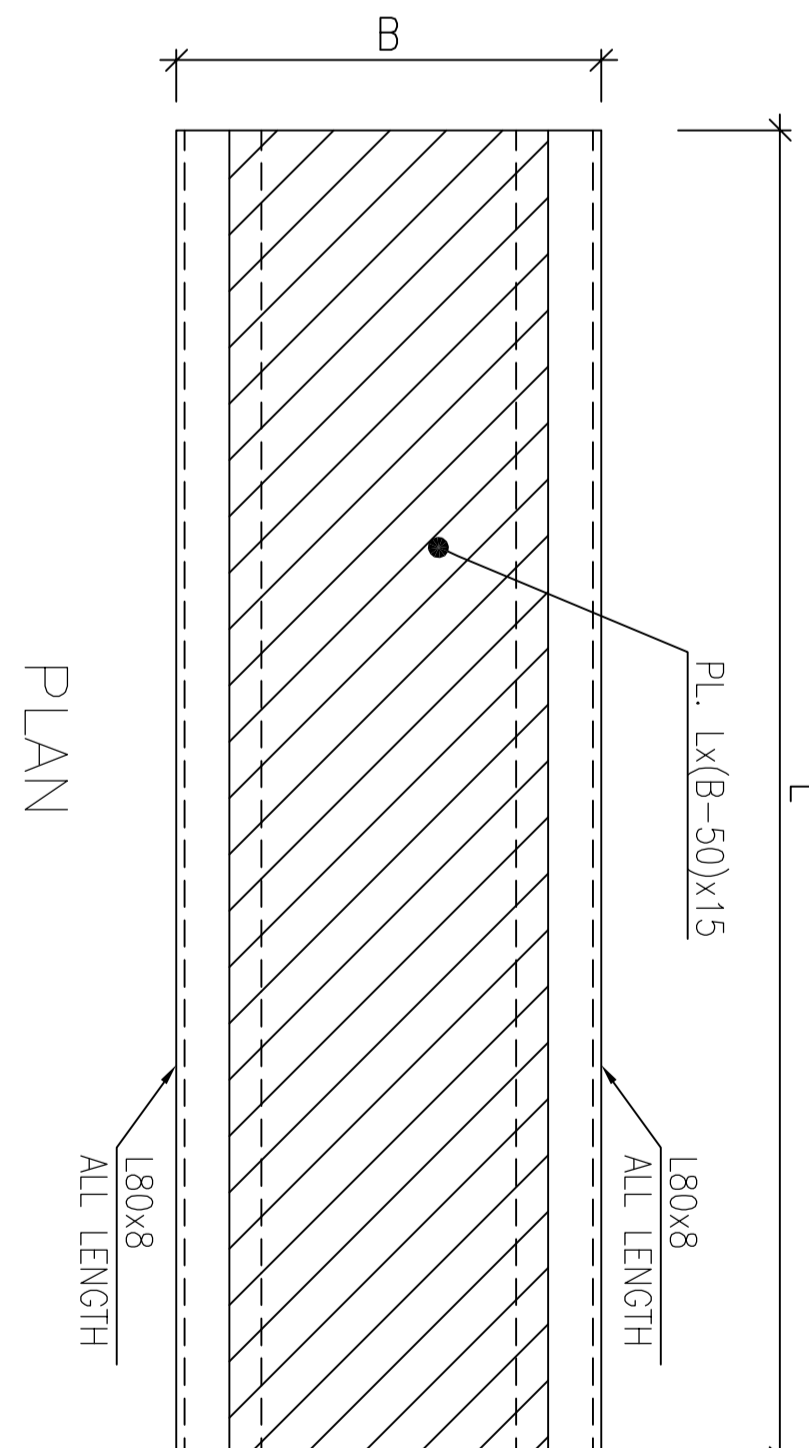
1:10 REINFORCEMENT



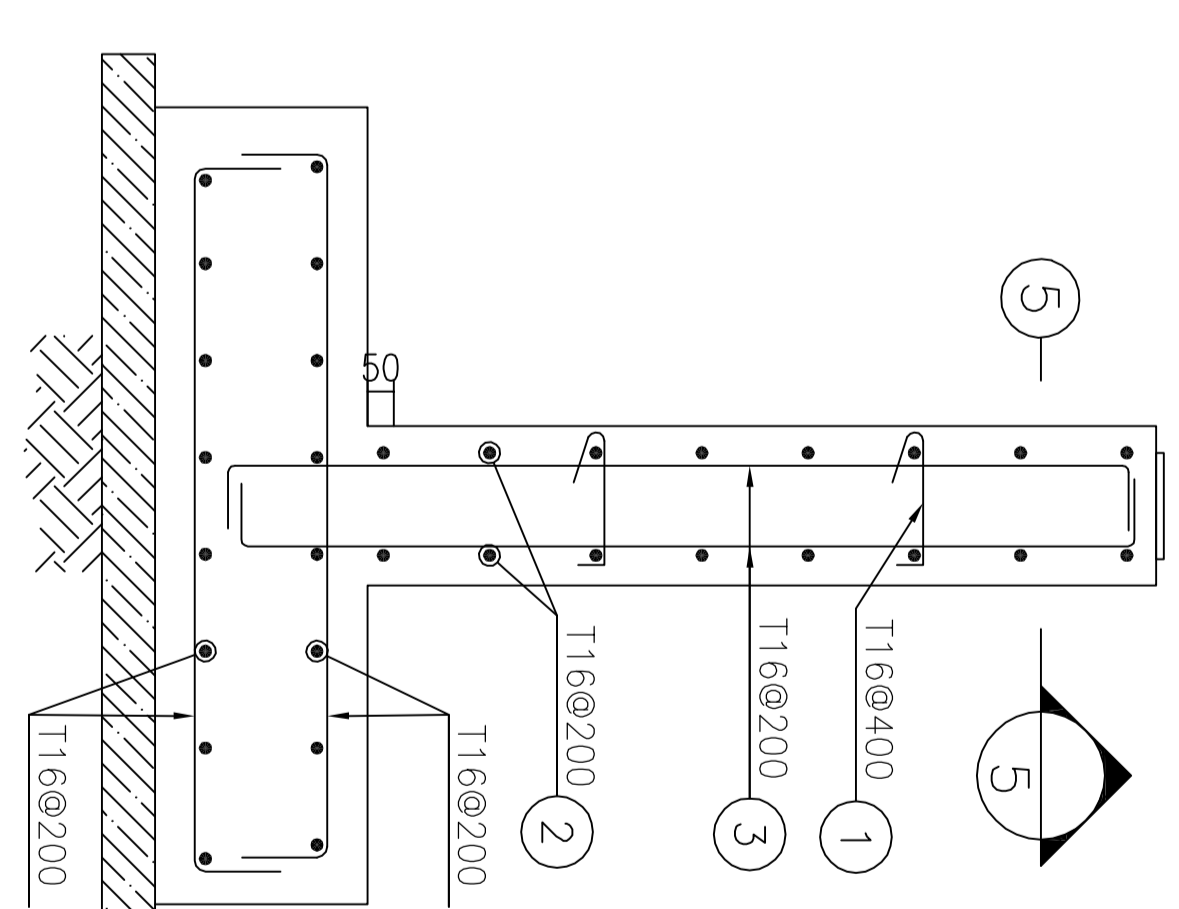
1:20 FORMWORK



N.T.S. DETAIL



N.T.S. DETAIL



1:20 REINFORCEMENT

Pos	Spec	Shape	L/A	No.	T16
1	T16	100 200 100	0.400	682	272,800
2	T16	250 4800 250	5.400	496	2678,400
3	T16	1780 1780 250	2.200	52	114,400
4	T16	250 4880 250	5.350	498	2653,600
5	T16	250 1380 250	1.850	1612	2982,200
TOTAL LENGTH OR AREA (m/m ²)					8701.40
UNIT WEIGHT (Kg)					1.578
WEIGHT (Kg)					13730.81
GRAND TOTAL (Kg)					13731 Kg.

REV.	DESCRIPTION	BY	DATE	REV.	DESCRIPTION	BY	DATE
***	*****	***	****	***	*****	***	****
***	*****	***	****	***	*****	***	****

DATE	SCALE	DRAWING BY	CHECKED BY	PROJECT ENG.

NO CONSTRUCTION PERMITTED UNLESS DRAWING APPROVED	APPROVED FOR CONSTRUCTION	BY:	DATE:

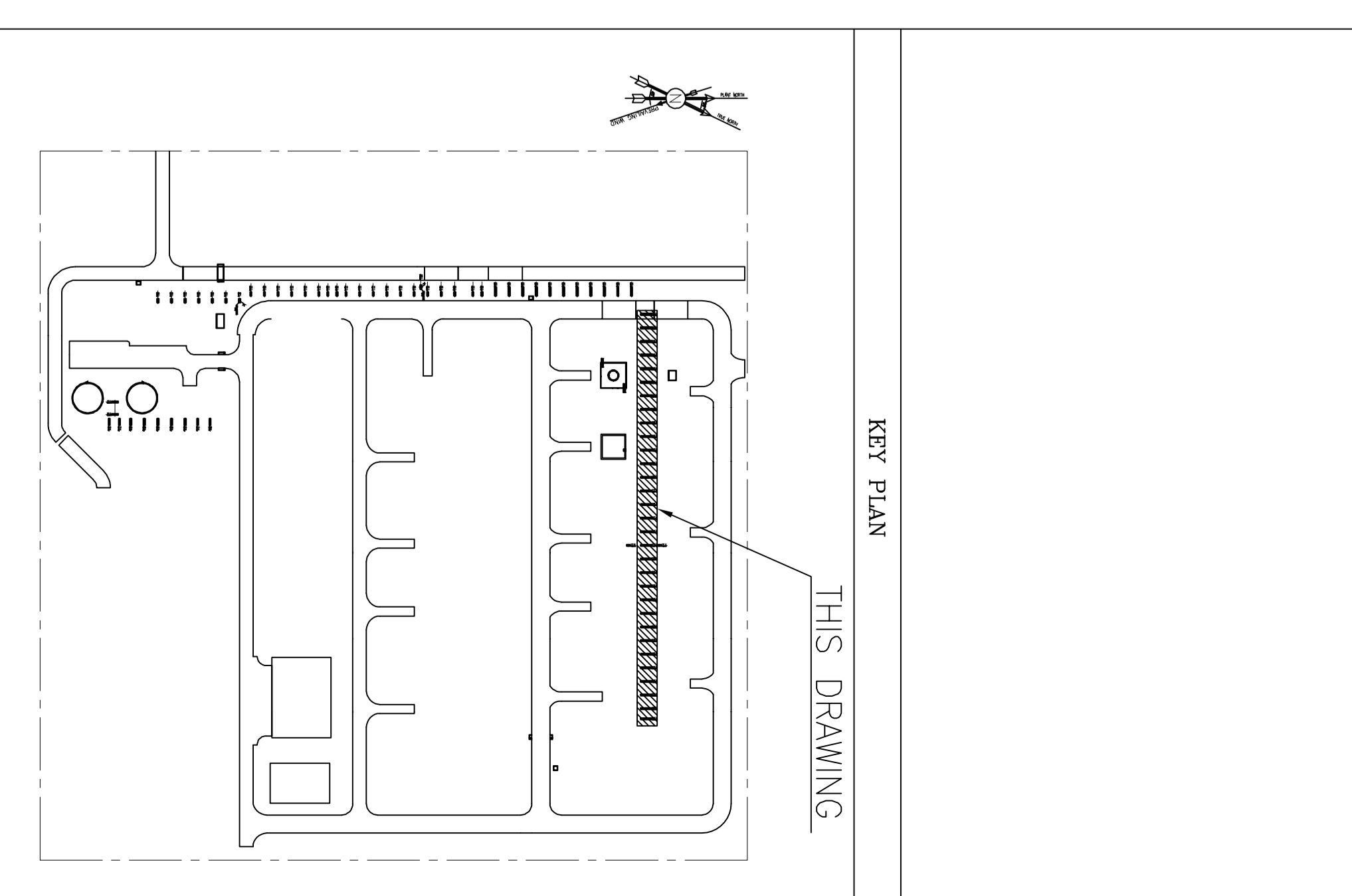
BUDGET REF.	LOCATION	SIZE CLASS	SERIAL NO.	SHEET	REVISION
083-073-9194	F	4	Q	02	D00

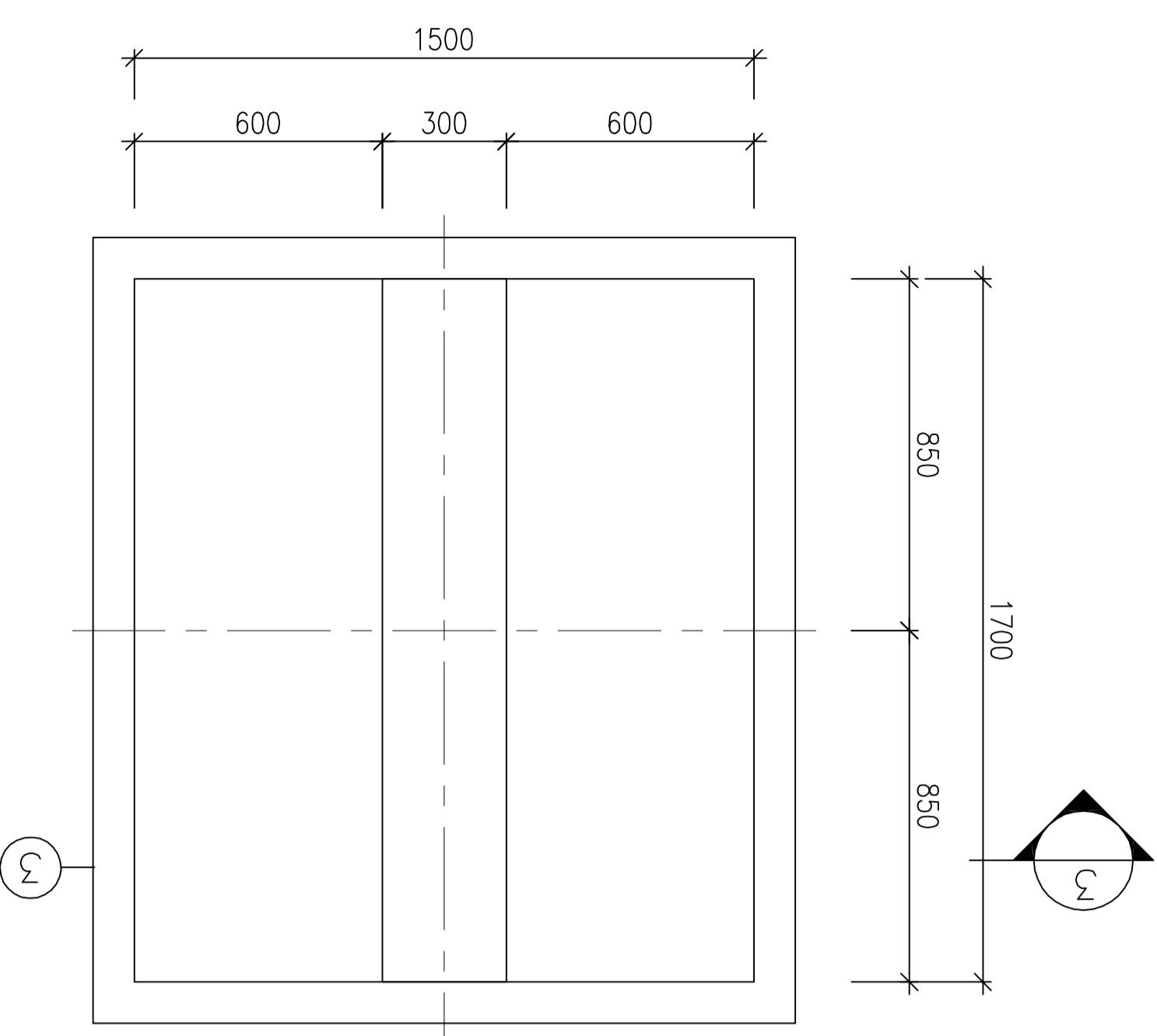
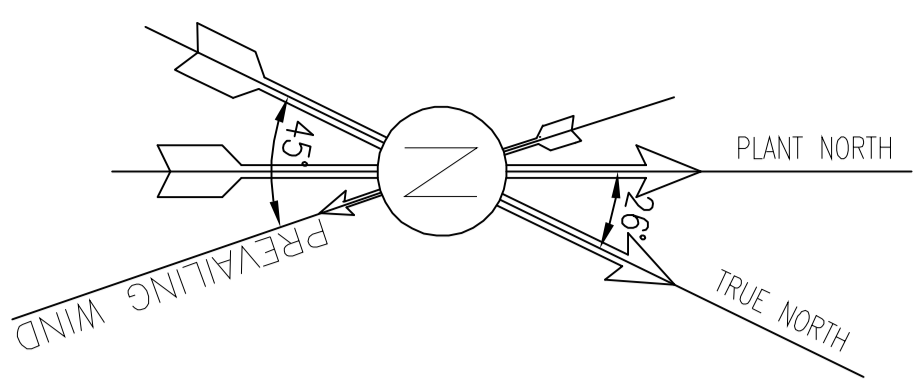
- NOTES**
- 1) ALL ELEVATIONS AND COORDINATES ARE IN "m" AND DIMENSIONS ARE IN "mm" UNLESS OTHERWISE NOTED.
 - 2) ALL DIMENSIONS AND ELEVATIONS SHALL BE CHECKED BY THE CONTRACTOR PRIOR TO CONSTRUCTION.
 - 3) 28 DAYS CHARACTERISTIC COMPRESSIVE STRENGTH OF CONCRETE IS 30MPa. (ON CYLINDRICAL SPECIMEN)
 - 4) 28 DAYS CHARACTERISTIC COMPRESSIVE STRENGTH OF LEAN CONCRETE IS 15MPa. (ON CYLINDRICAL SPECIMEN)
 - 5) CONCRETE COVER OVER BARS SHALL BE 75mm FOR FOUNDATION AND 40mm FOR CAST IN-SITU OTHER PARTS.
 - 6) TENSION STRENGTH OF BARS SHALL BE OF MINIMUM $f_y=4000 \text{ kg/cm}^2$
 - 7) UNDERGROUND CONCRETE SHALL BE PROTECTED AND COATED ACCORDING TO RELEVANT SPECIFICATION.
 - 8) CEMENT TYPE II SHALL BE USED ACCORDING TO GEOTECHNICAL REPORT SUGGESTION.
 - 9) FILL MATERIAL SHALL BE COMPACTED TO NOT LESS THAN 95% OF THE MAXIMUM DENSITY AS DETERMINED BY ASTM D-1557 (MODIFIED PROCTOR) METHOD.
 - 10) REINFORCEMENT SHALL BE ADJUSTED LOCALLY TO SUIT THE RECESS OF ANCHOR BOLTS, HOLES AND OTHER EMBEDDED MATERIALS.

LEGEND

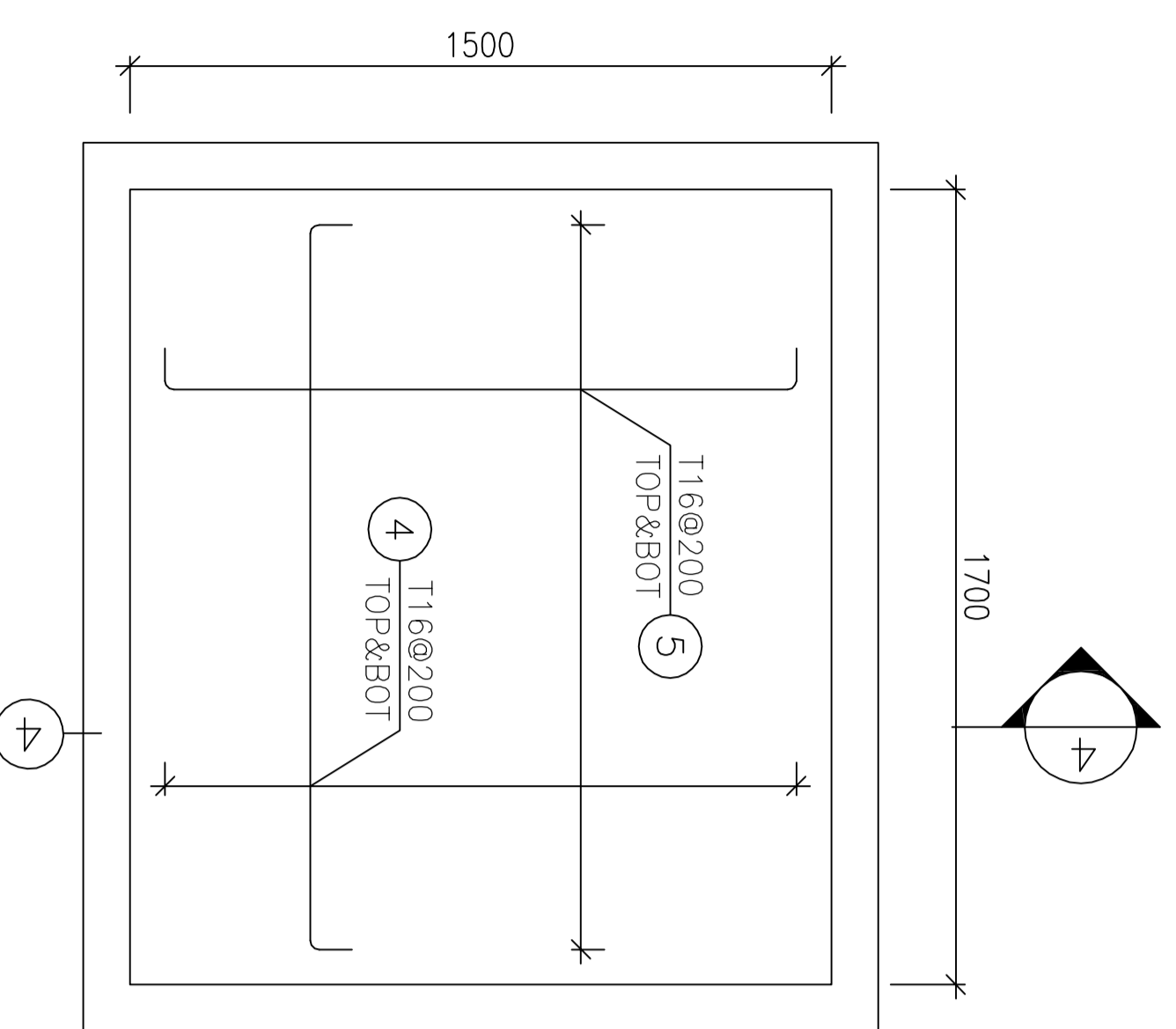
T.O.F.	TOP OF FOUNDATION
B.O.F.	BOTTOM OF FOUNDATION
T.O.G.	TOP OF GROUT
H.P.P.	HIGH POINT OF PAVING

REFERENCE DRAWING	DRG. No.
*****	*****

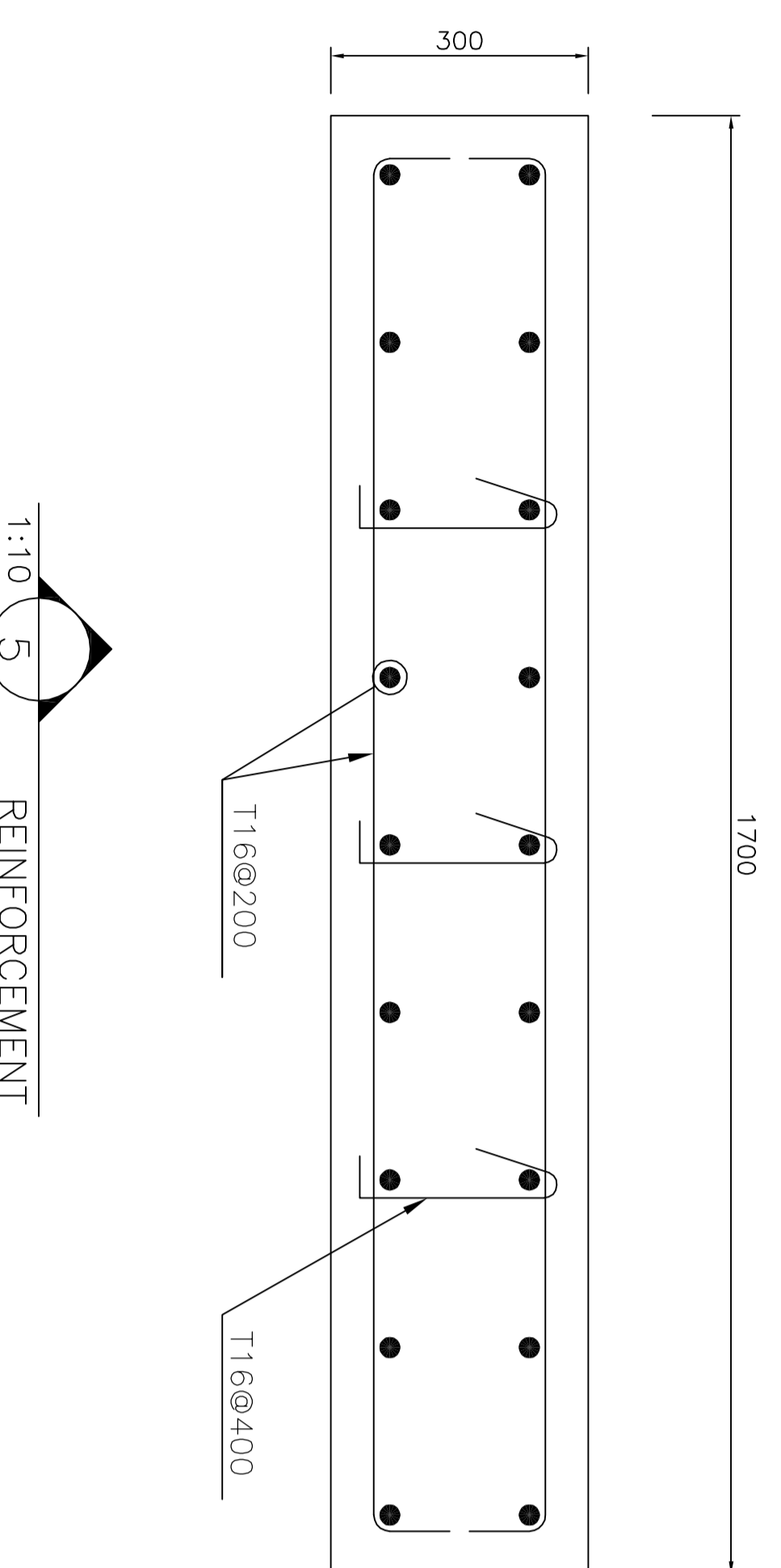




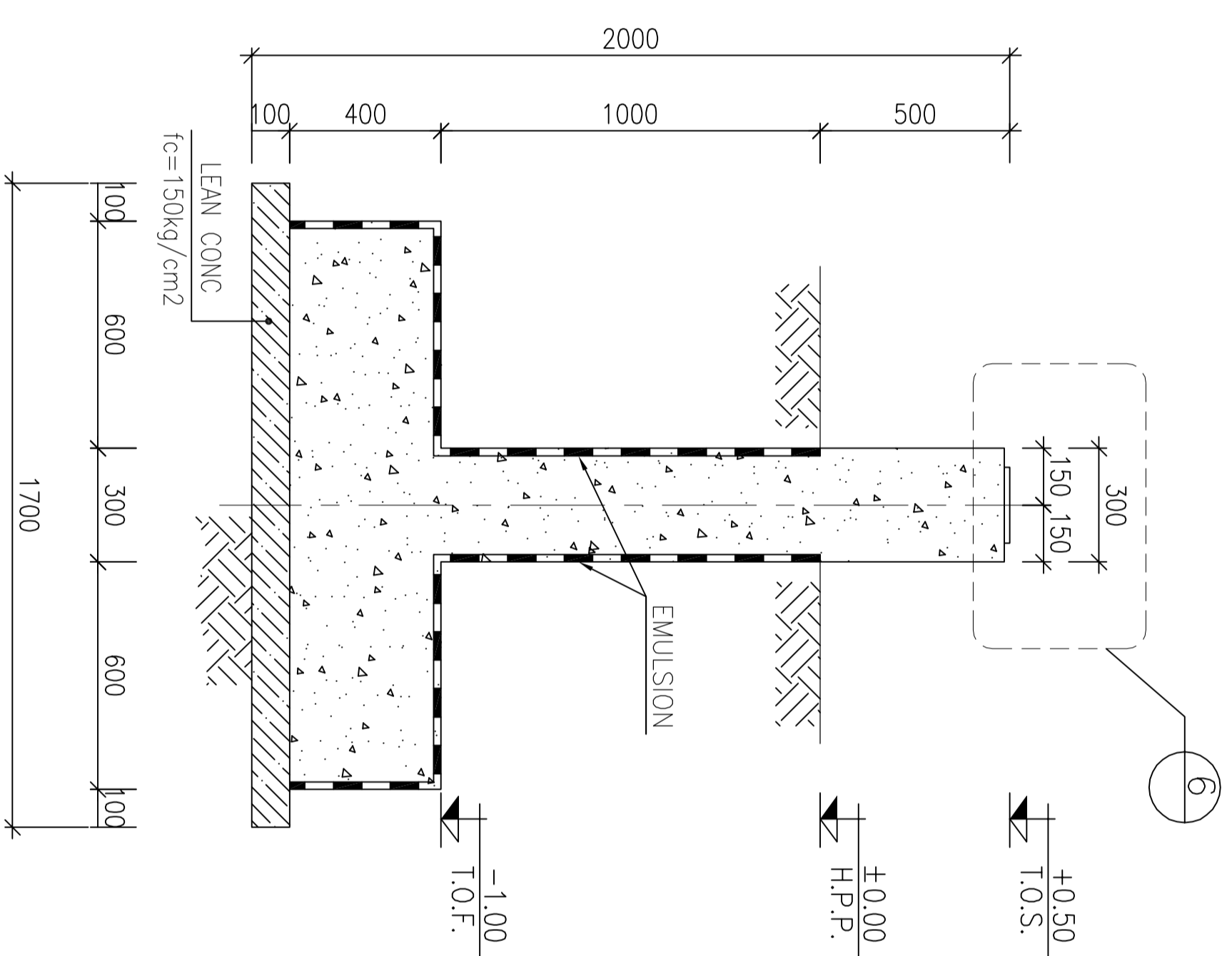
FOUNDATION FORMWORK PLAN
PIPE SLEEPERS TYPE B (NO. : 02)



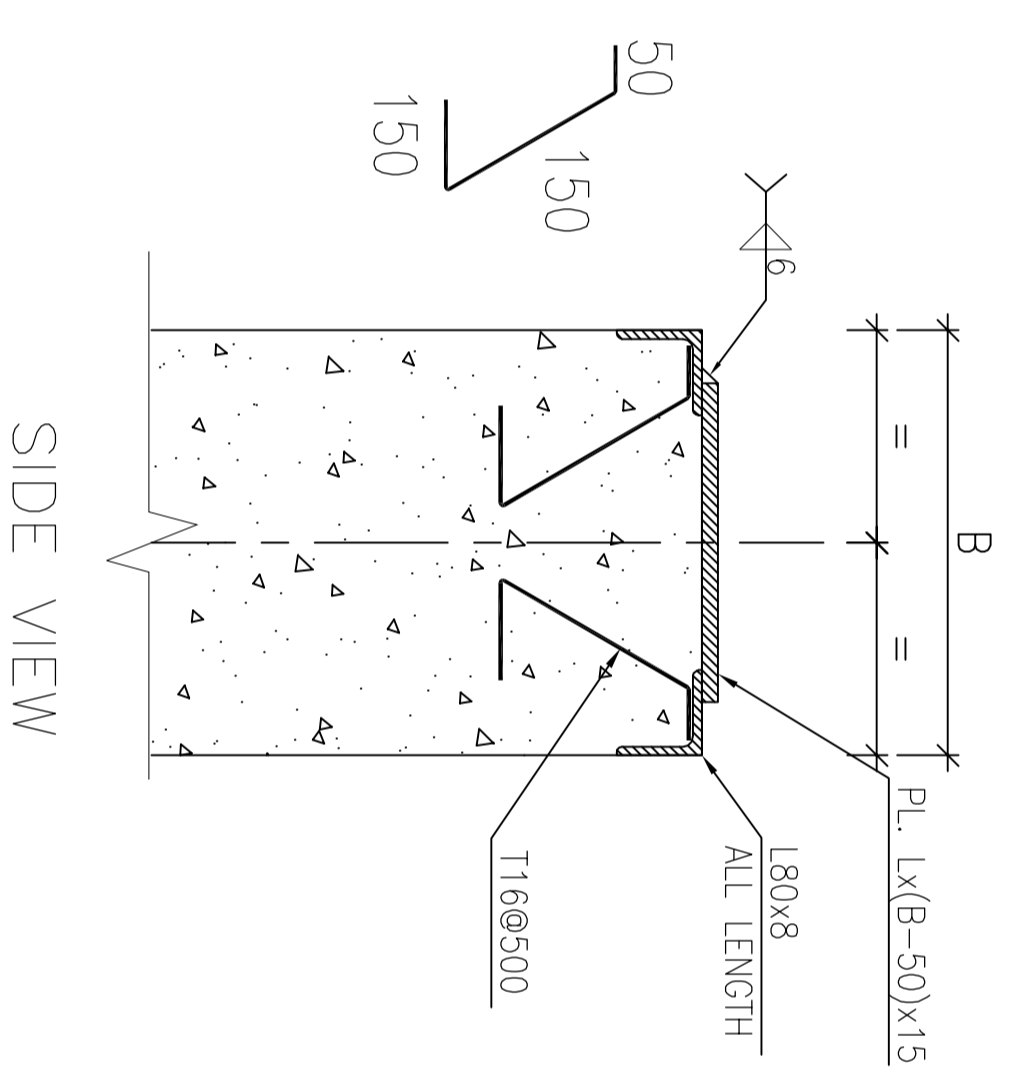
FOUNDATION REINFORCEMENT PLAN
PIPE SLEEPERS TYPE B (NO. : 02)



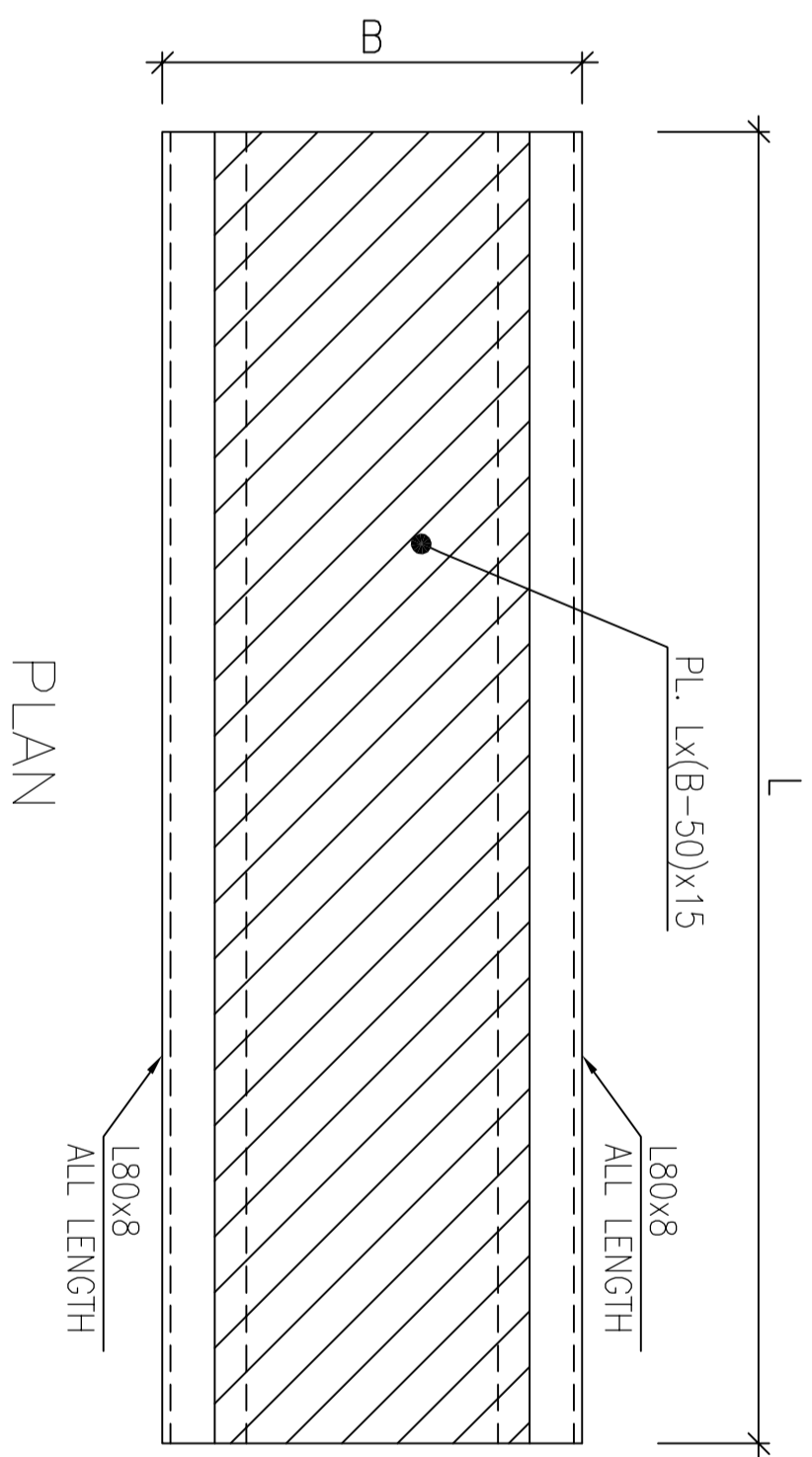
REINFORCEMENT



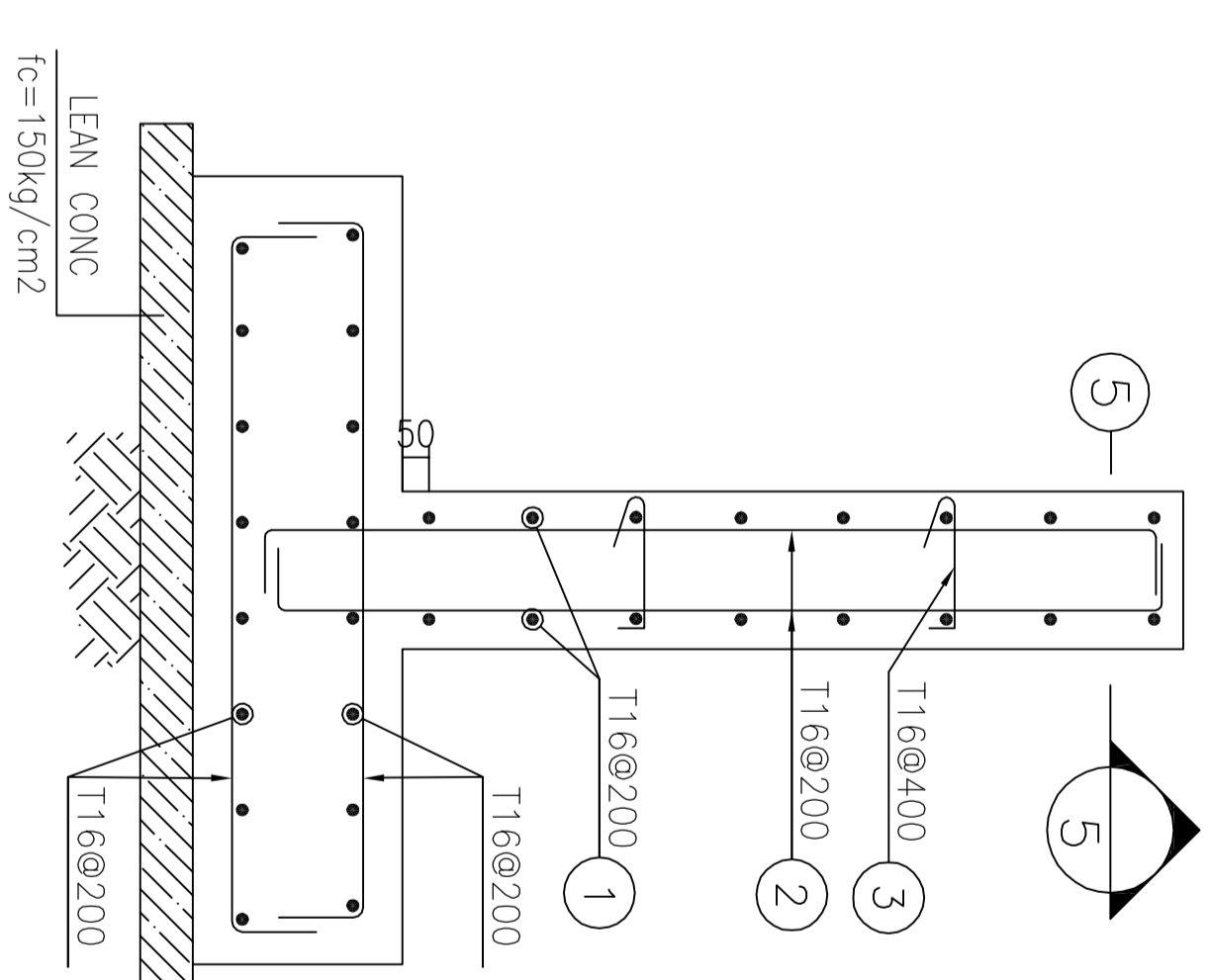
FORMWORK



DETAIL

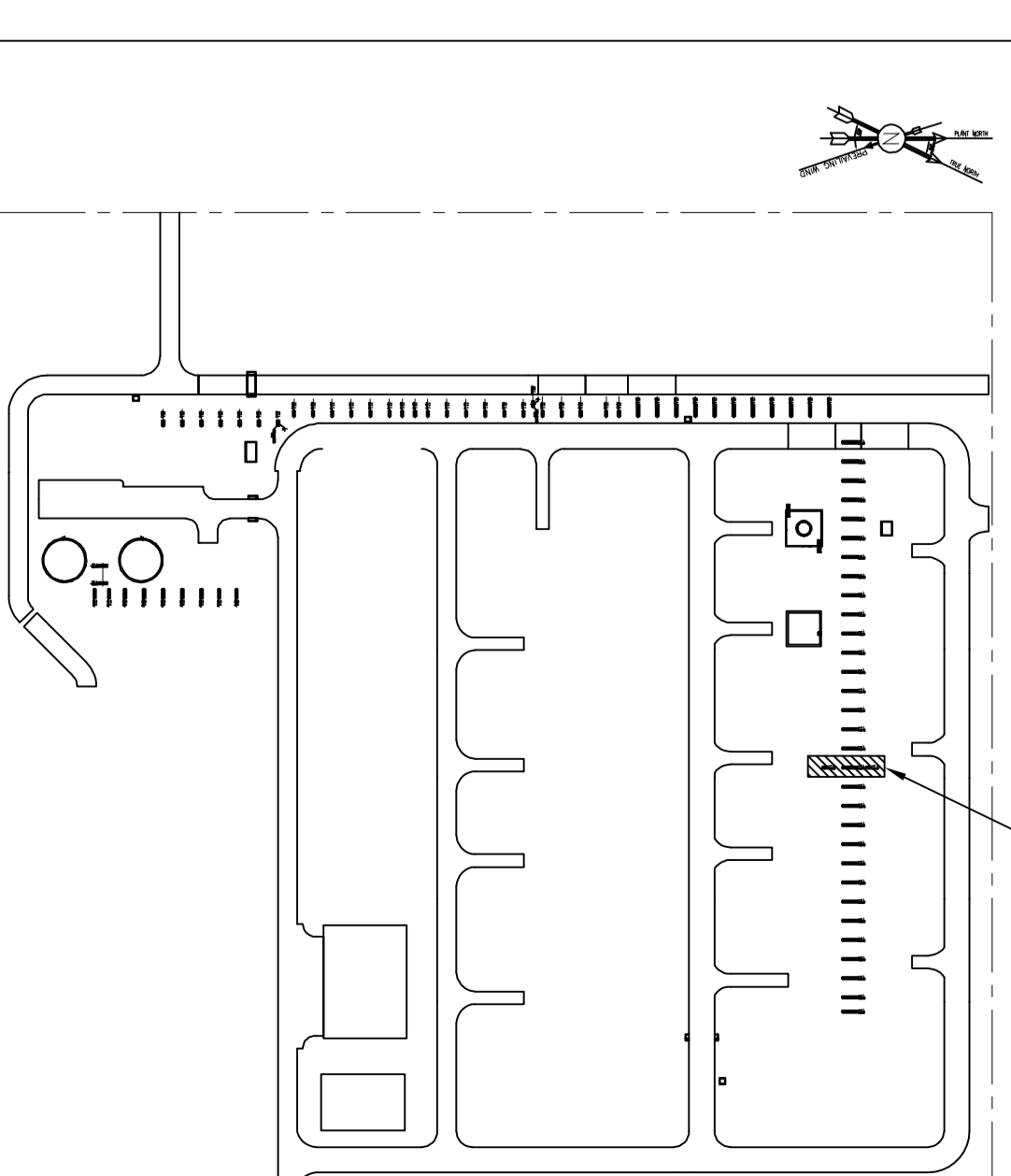


PLAN



REINFORCEMENT

Pos	Spec	Shape	LA	No.	T16
1	T16	1600	2.100	36	75.600
2	T16	250	2.200	36	79.200
3	T16	100	0.400	12	4.800
4	T16	250	2.050	32	65.600
5	T16	250	1.850	36	66.600
TOTAL LENGTH OR AREA (m/m ²)					291.80
UNIT WEIGHT (kg)					1.578
WEIGHT (kg)					460.46
GRAND TOTAL (kg)					460 Kg.



KEY PLAN
THIS DRAWING

- NOTES**
- 1) ALL ELEVATIONS AND COORDINATES ARE IN "m" AND DIMENSIONS ARE IN "mm" UNLESS OTHERWISE NOTED.
 - 2) ALL DIMENSIONS AND ELEVATIONS SHALL BE CHECKED BY THE CONTRACTOR PRIOR TO CONSTRUCTION.
 - 3) 28 DAYS CHARACTERISTIC COMPRESSIVE STRENGTH OF CONCRETE IS 30MPa. (ON CYLINDRICAL SPECIMEN)
 - 4) 28 DAYS CHARACTERISTIC COMPRESSIVE STRENGTH OF LEAN CONCRETE IS 15MPa. (ON CYLINDRICAL SPECIMEN)
 - 5) CONCRETE COVER OVER BARS SHALL BE 75mm FOR FOUNDATION AND 40mm FOR CAST IN-SITU OTHER PARTS.
 - 6) TENSION STRENGTH OF BARS SHALL BE OF MINIMUM $f_y=4000 \text{ kg/cm}^2$
 - 7) UNDERGROUND CONCRETE SHALL BE PROTECTED AND COATED ACCORDING TO RELEVANT SPECIFICATION.
 - 8) CEMENT TYPE II SHALL BE USED ACCORDING TO GEOTECHNICAL REPORT SUGGESTION.
 - 9) FILL MATERIAL SHALL BE COMPACTED TO NOT LESS THAN 95% OF THE MAXIMUM DENSITY AS DETERMINED BY ASTM D-1557 (MODIFIED PROCTOR) METHOD.
 - 10) REINFORCEMENT SHALL BE ADJUSTED LOCALLY TO SUIT THE RECESS OF ANCHOR BOLTS, HOLES AND OTHER EMBEDDED MATERIALS.

LEGEND

	T.O.F. TOP OF FOUNDATION
	B.O.F. BOTTOM OF FOUNDATION
	T.O.G. TOP OF GROUT
	H.P.P. HIGH POINT OF PAVING
	REINFORCED CONCRETE
	LEAN CONCRETE
	GROUND

REFERENCE DRAWING

DRG. No.	*****
----------	-------

<p>PROJECT NO.: 971020</p> <p>EPC CONTRACTOR: BPD/EPG CONTRACTOR (GC): PETROBRAS DEVELOPMENT COMPANY</p> <p>HIRKAN ENERGY - DESIGN & INSPECTION</p>		<p>PROJECT NAME: BINAK OILFIELD DEVELOPMENT/SURFACE FACILITIES GAS COMPRESSOR STATION</p>	
REV.	DATE	DESCRIPTION	CHECKED
1	JAN-2023	IFC	PREP. BY: M.KARIMAN
2			CHK. BY: M.KARIMAN
3			APP. BY: M.KARIMAN
4			APP. BY: M.KARIMAN
5			APP. BY: M.KARIMAN

NO CONSTRUCTION PERMITTED UNLESS DRAWING APPROVED

APPROVED FOR CONSTRUCTION BY: DATE:

BUDGET REF. LOCATION SIZE CLASS SERIAL NO. SHEET REVISION

1:20 A0 BK-GCS-PEPCO-120-ST-DWG-0044 03 OF 03 D00 083-073-9141 P 4 Q 709141 03 D00