
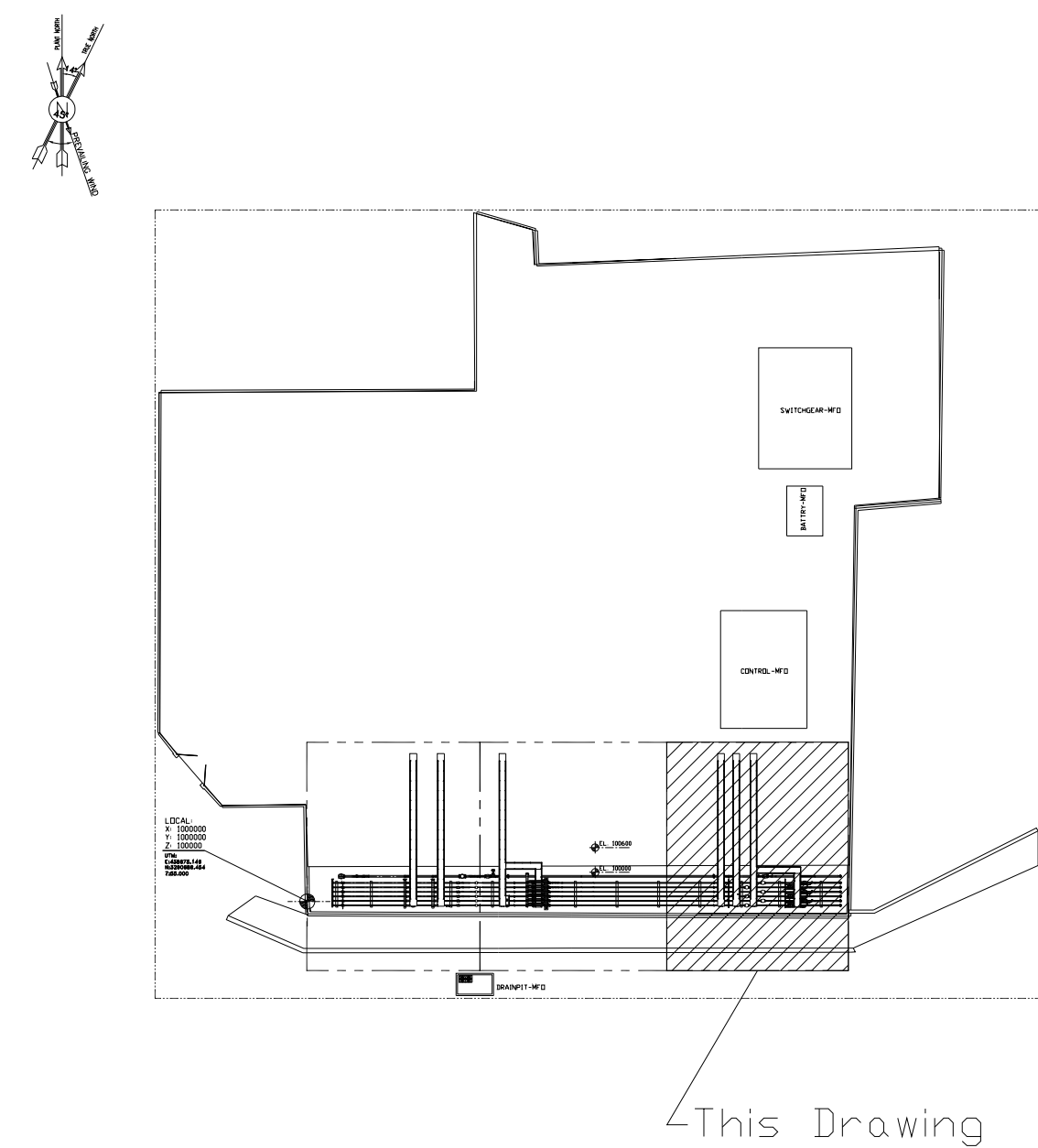


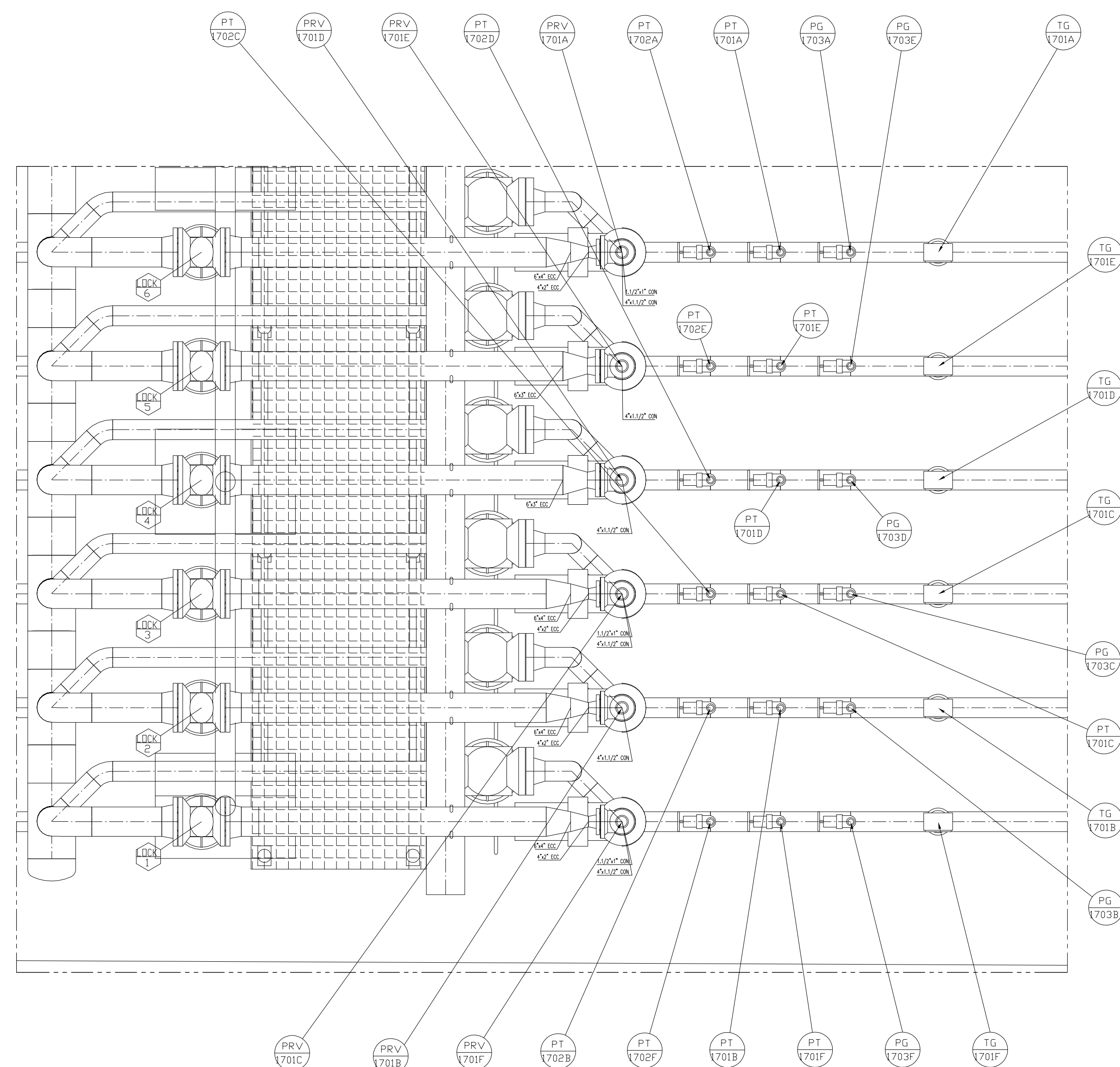
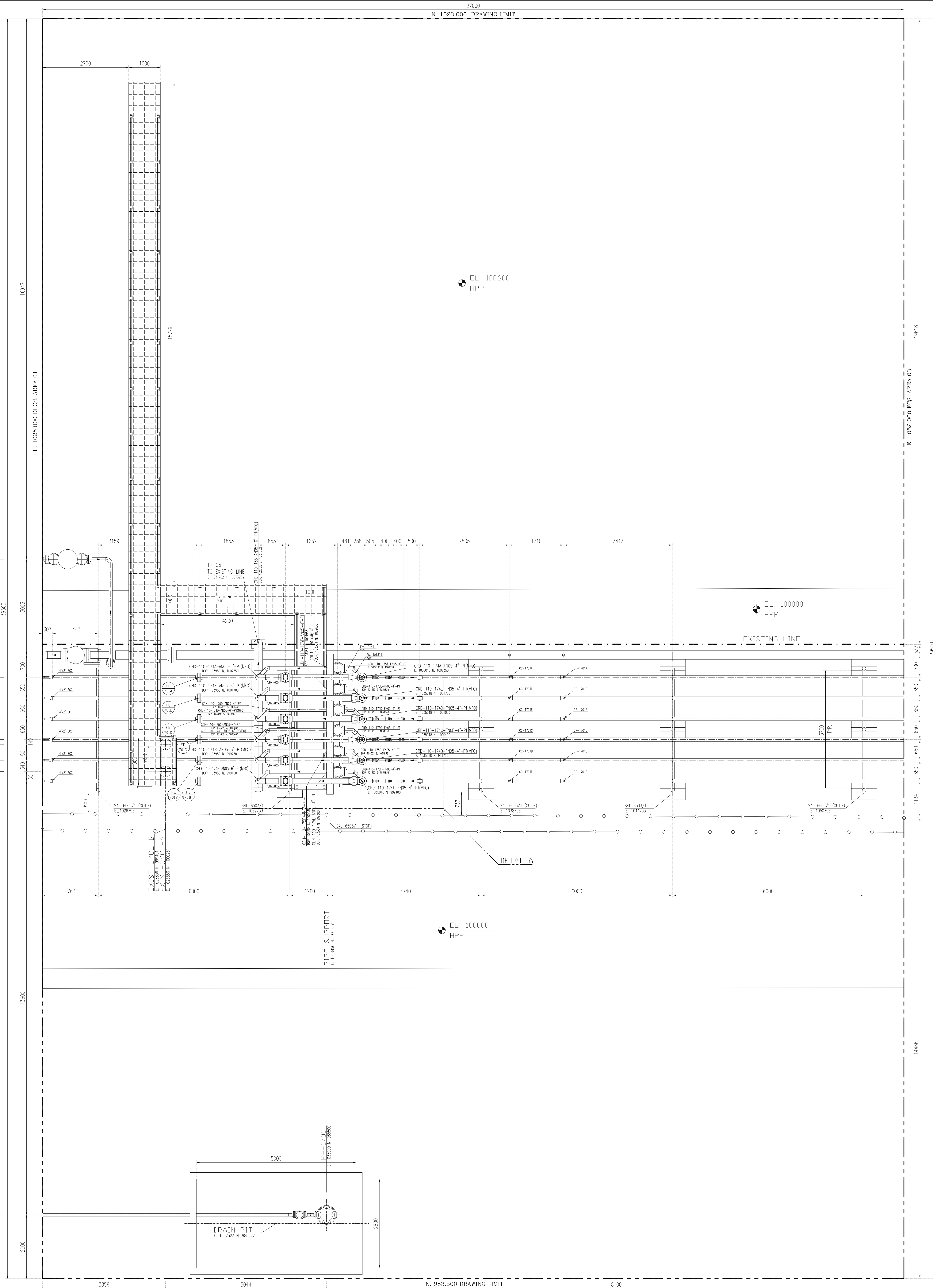
- | NOTES |   |
|-------|---|
| 1-    | ALL DIMENSIONS AND ELEVATIONS ARE IN MILLIMETERS. |
| 2-    | ALL COORDINATES ARE IN METERS.                    |
| 3-    | H.P.P. ELEVATION +100.00 CORRESPOND TO +55.0 UTM  |
| 4-    | ALL COORDINATES = PLANT COORDINATES               |

LEGEND	
WP	WORKING POINT ELEVATION (CENTER OF PIPE ELEVATION)
PF	PLATFORM
BOP	BOTTOM OF PIPE ELEVATION
TOS	TOP OF STEEL ELEVATION
FGL	FINISH GRADE LEVEL
HPG	HIGH POINT OF GRAVEL
HPP	HIGH POINT OF PAVEMENT
MSL	MEAN SEA LEVEL
SS	STRUCTURE SUPPORT
PS	PIPE SUPPORT
SPS	SPECIAL PIPE SUPPORT
FCS	FOR CONTINUE SEE
	SLOPE

Plot Plan Drawing - Extension of Binak B/C Manifold	DRG. No. BK-W007S-PEDCO-110-PI-PY-0001
P&ID - Extension of Binak B/C Manifold	BK-W007S-PEDCO-110-PR-PI-0001

KEY PLAN

[illegible]



DETAIL A

SC:1/20


AREA 02

EL. 96000 ~ EL. 105123

SC:1/50

- | NOTES  |
|--|
| 1- ALL DIMENSIONS AND ELEVATIONS ARE IN MILLIMETERS. |
| 2- ALL COORDINATES ARE IN METERS.                    |
| 3- H.P.P. ELEVATION +100.00 CORRESPOND TO +55.0 UTM. |
| 4- ALL COORDINATES = PLANT COORDINATES               |

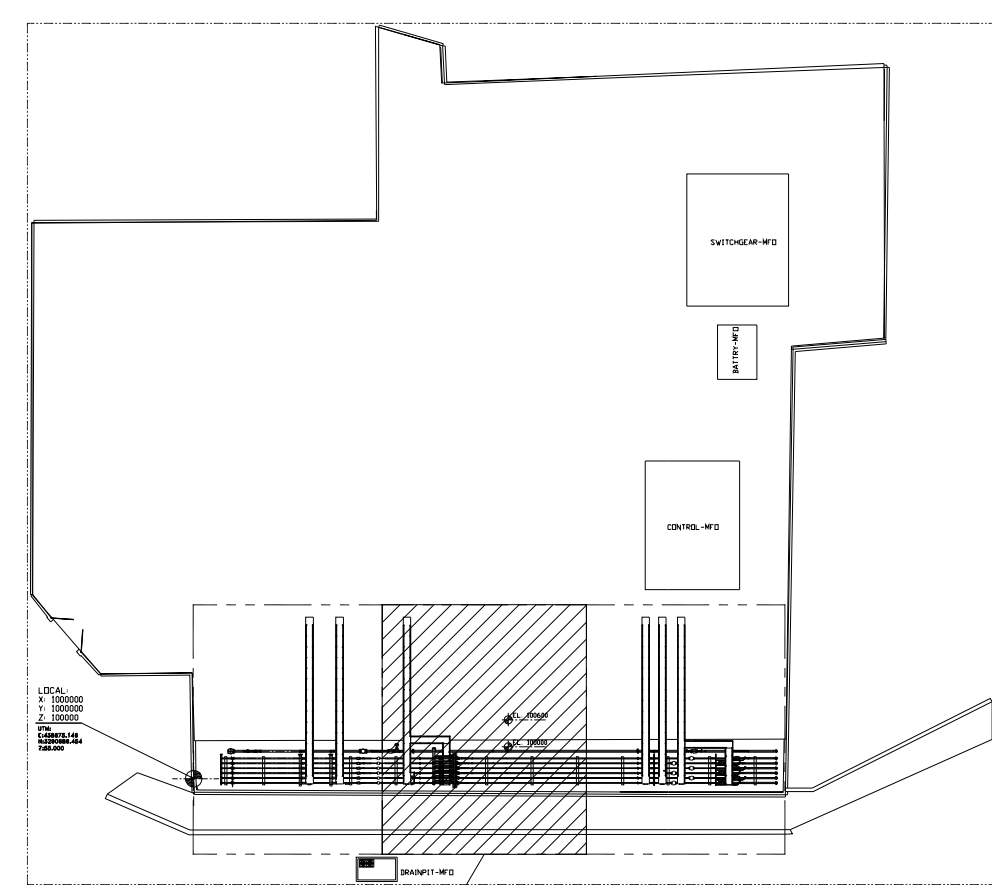
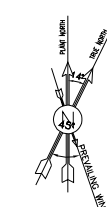
LEGEND

WP	WORKING POINT ELEVATION (CENTER OF PIPE ELEVATION)
PF	PLATFORM
BOP	BOTTOM OF PIPE ELEVATION
TOS	TOP OF STEEL ELEVATION
FGL	FINISH GRADE LEVEL
HPG	HIGH POINT OF GRAVEL
HPP	HIGH POINT OF PAVEMENT
MSL	MEAN SEA LEVEL
SS	STRUCTURE SUPPORT
PS	PIPE SUPPORT
SPS	SPECIAL PIPE SUPPORT
FCS	FOR CONTINUE SEE
	SLOPE

 MATCH LINE  
 EXISTING LINE  
 FENCE

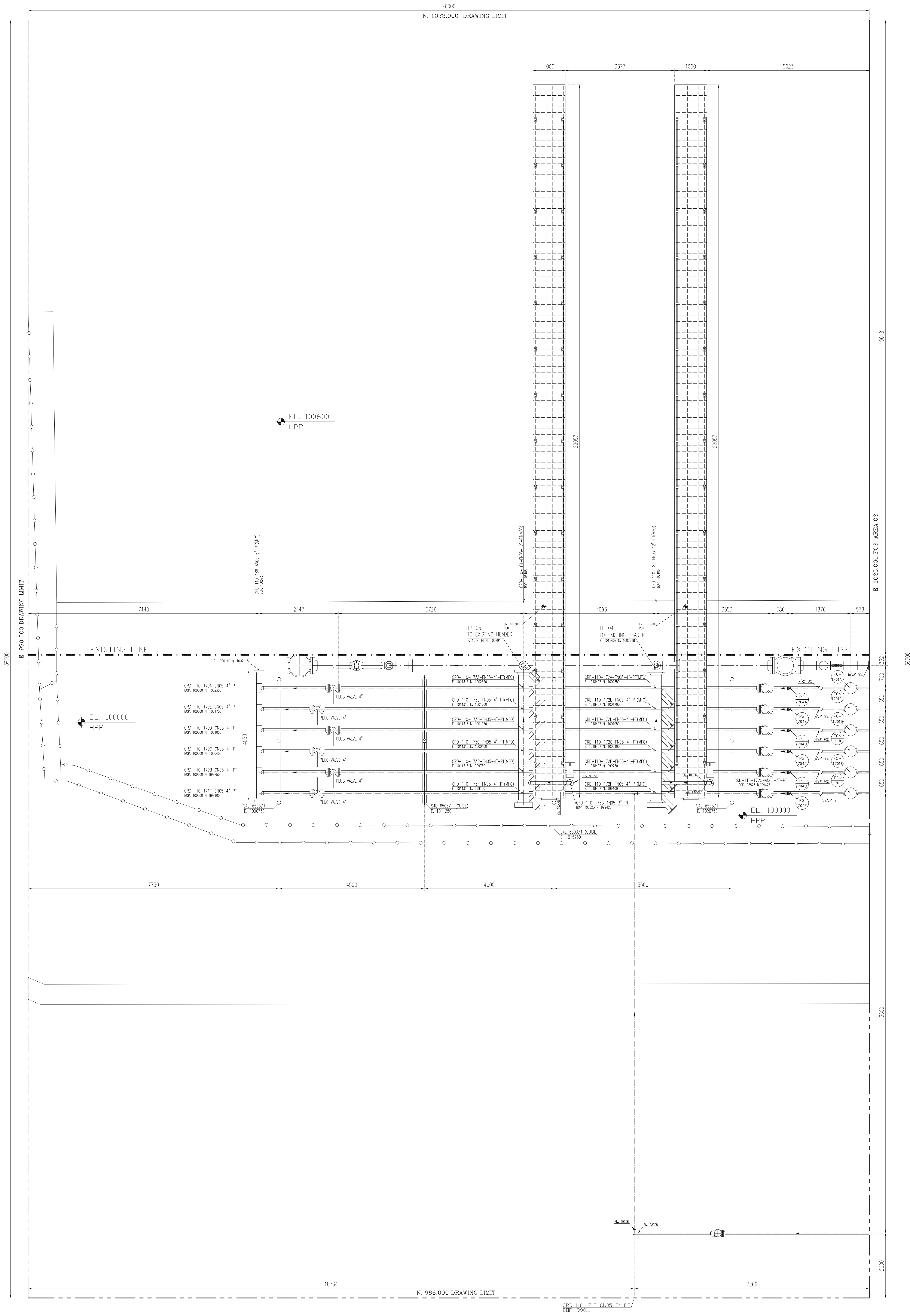
REFERENCE DRAWING	DRG. No.
Plot Plan Drawing - Extension of Binak B/C Manifold	BK-W007S-PEDCO-110-PI-PY-0001
P&ID - Extension of Binak B/C Manifold	BK-W007S-PEDCO-110-PR-PI-0001

KEY PLAN



↳ This Drawing

[illegible]

[illegible]