

NOTES	
LEGEND	
REFERENCE DRAWING	DRG. No.
IPS Lighting Installation Details (Category 300)	IPS-D-BL-300
KEY PLAN	


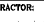

[illegible]

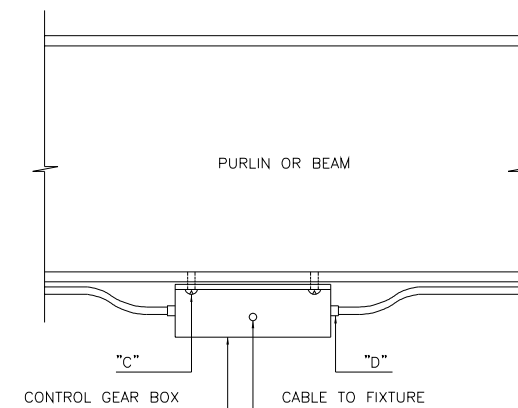
INDEX SHEET

SHEET No.	DESCRIPTION	ID NO.	D00	D01	D02	D03
01	COVER PAGE		X	X	X	
02	INDEX SHEET		X	X	X	
03	LIGHTING SCHEDULE		X	X		
04	REFLECTORY HIGH BAY FIXTURE (WITH MERCURY VAPOUR LAMP) BEAM MOUNTED	L.S.1	X	X		
05	INCANDESCENT LAMPS FIXTURES INSTALLATION	L.S.2	X	X		
06	FLUORESCENT LIGHTING FIXTURE (MOUNTED ON STEEL BEAM)	L.S.3	X	X		
07	FLUORESCENT LIGHTING FIXTURE (MOUNTED ON STEEL COLUMN)	L.S.4	X	X		
08	FLUORESCENT LIGHTING FIXTURE (MOUNTED ON CONCRETE BEAM)	L.S.5	X	X		
09	FLUORESCENT LIGHTING FIXTURE (MOUNTED ON CONCRETE STRUCTURE)	L.S.6	X	X		
10	FLUORESCENT LIGHTING FIXTURE (STAND TYPE ON PLATFORM)	L.S.7	X	X		
11	FLUORESCENT STREET LIGHTING FIXTURE (SELF STAND TYPE ON GRADE)	L.S.8	X	X		
12	STREET LIGHTING FIXTURE (RECOMMENDED FOR NON-INDUSTRIAL USE)	L.S.9	X	X		
13	BASE PLATE (RECOMMENDED FOR NON-INDUSTRIAL USE)	L.S.10	X	X		
14	COLUMNS WITH BRACKETS (RECOMMENDED FOR NON-INDUSTRIAL USE)	L.S.11	X	X		
15	DOOR OPENING AND CABLE ENTRY SLOTS (RECOMMENDED FOR NON-INDUSTRIAL USE)	L.S.12	X	X		
16	MERCURY VAPOR LIGHTING FIXTURE (MOUNTED ON STEEL BEAM)	L.S.13	X	X		
17	MERCURY VAPOR LIGHTING FIXTURE (MOUNTED ON CONCRETE BEAM)	L.S.14	X	X		
18	MERCURY VAPOR LIGHTING FIXTURE (BRACKET TYPE)	L.S.15	X	X		
19	FLOODLIGHTING FIXTURE (MOUNTED ON STEEL STRUCTURE)	L.S.16	X	X		
20	FLOODLIGHTING FIXTURE (MOUNTED ON CONCRETE STRUCTURE)	L.S.17	X	X		
21	FLOODLIGHTING FIXTURE (MOUNTED ON HANDRAIL)	L.S.18	X	X		
22	FLOODLIGHTING FIXTURE (MOUNTED ON STEEL BEAM)	L.S.19	X	X		
23	AIRCRAFT WARNING LIGHT (MOUNTED ON TELECOM TOWER)	L.S.20	X	X		
24	AIRCRAFT WARNING LIGHT (TYPICAL PANEL)	L.S.21	X	X		
25	GARDEN LIGHTING POLE	L.S.22	X	X		
26	CONDUIT SUPPORT (FIXED ON LADDER)	L.S.23	X	X		
27	CONDUIT SUPPORT	L.S.24	X	X		
28	JUNCTION BOX INSTALLATION	L.S.25		X		

SHEET No.	DESCRIPTION	ID NO.	D00	D01	D02	D03
29	JUNCTION BOX INSTALLATION	L.S.26		X		
30	FLOODLIGHTING (MOUNTED ON TOWER)	L.S.27		X		
31	EXIT LIGHTING FIXTURE WALL MOUNTED TYPE	L.S.28		X		
32	SWITCH, SOCKET AND BOX INSTALLATION (RECESSED MOUNTED TYPE)	L.S.29		X		
33	SWITCH, SOCKET AND BOX INSTALLATION (SURFACE MOUNTED TYPE)	L.S.30		X		
34	SOCKET OUTLETS BOX INSTALLATION (WALL OR STRUCTURE MOUNTED)	L.S.31		X		
35	SOCKET OUTLETS BOX INSTALLATION (STAND MOUNTED)	L.S.32		X		
36	SOCKET OUTLET INSTALLATION (STRUCTURE MOUNTED/STAND MOUNTED)	L.S.33		X		
37	COMBINED SOCKET OUTLETS BOX INSTALLATION (230/110/24VAC) (WALL OR STRUCTURE MOUNTED) TYPE: 1	L.S.34		X		
38	POLE FLUORESCENT FIXTURE, BRACKET MOUNTED (ON STEEL STRUCTURE)	L.S.35				X
39	POLE FLUORESCENT FIXTURE, BRACKET MOUNTED (ON CONCRETE COLUMN)	L.S.36				X


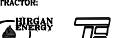

D03

D09	MAR.2003	I/	AJLHADA	MUSKABAN	MUSKABAN	
D08	OCT.2002	I/	AJLHADA	MUSKABAN	MUSKABAN	
D01	OCT.2001	I/P	AJLHADA	MUSKABAN	MUSKABAN	
D00	AUG.2001	I/P	MUSKABAN	MUSKABAN	SILAKUWA	
REV.	DATE	P.O.F.I	PREP.	CHEK.	APP.	AUT.
PRO/ECT NAME: BINAK OILFIELD DEVELOPMENT GENERAL						
PRO/ECT NO.: 971000						
EPC CONTRACTOR:			EPD/EPC CONTRACTOR (GC):			
<div><div></div><div>BIRKAN ENERGY - DESIGN & INSPECTION COMPANIES</div></div>			<div><div></div><div>PETROIRAN DEVELOPMENT COMPANY</div></div>			
BINAK OILFIELD DEVELOPMENT GENERAL						
DATE		SCALE		DRAWING BY		CHECKED BY
NO CONSTRUCTION PERMITTED UNLESS DRAWING APPROVED						
APPROVED FOR CONSTRUCTION				BY:		DATE:
BUDGET REF.		LOCATION SITE CLASS		SERIAL NO.		REVISION
008-070-BIHA	F	2	P	707225	GE OF CR	DOO



ITEM	DESCRIPTION	QTY.	REMARKS
A	INDUSTRIAL TYPE OF LIGHTING FIXTURES WITH CONTROL GEAR BOX	1	
B	HOOK MADE FROM ϕ 12mm ROUND BAR AS SHOWN	AS REQ	
C	SELF CUTTING SCREW, M6	4	
D	CABLE GLAND	4	

REFLECTORY HIGH BAY FIXTURE
(WITH MERCURY VAPOUR LAMP) BEAM MOUNTED

<table><tr><td>D05</td><td>MAR.2023</td><td>PI</td><td>ALHADA</td><td>M/SHARAF</td><td>M/SHARAF</td></tr><tr><td>D02</td><td>OCT.2022</td><td>PI</td><td>ALHADA</td><td>M/SHARAF</td><td>M/SHARAF</td></tr><tr><td>D01</td><td>QTT.2021</td><td>PI</td><td>ALHADA</td><td>M/SHARAF</td><td>M/SHARAF</td></tr><tr><td>D00</td><td>AUG.2021</td><td>PI</td><td>M/SHARAF</td><td>M/SHARAF</td><td>SHAGALAH</td></tr><tr><td>REV.</td><td>DATE</td><td>P.O.L</td><td>PREP.</td><td>CHK.</td><td>APP.</td></tr></table>			D05	MAR.2023	PI	ALHADA	M/SHARAF	M/SHARAF	D02	OCT.2022	PI	ALHADA	M/SHARAF	M/SHARAF	D01	QTT.2021	PI	ALHADA	M/SHARAF	M/SHARAF	D00	AUG.2021	PI	M/SHARAF	M/SHARAF	SHAGALAH	REV.	DATE	P.O.L	PREP.	CHK.	APP.	<table><tr><td>REV.</td><td>DESCRIPTION</td><td>CHKD.</td><td>DATE</td><td>BY</td></tr><tr><td></td><td>CHECKED</td><td></td><td></td><td></td></tr></table>			REV.	DESCRIPTION	CHKD.	DATE	BY		CHECKED			
D05	MAR.2023	PI	ALHADA	M/SHARAF	M/SHARAF																																								
D02	OCT.2022	PI	ALHADA	M/SHARAF	M/SHARAF																																								
D01	QTT.2021	PI	ALHADA	M/SHARAF	M/SHARAF																																								
D00	AUG.2021	PI	M/SHARAF	M/SHARAF	SHAGALAH																																								
REV.	DATE	P.O.L	PREP.	CHK.	APP.																																								
REV.	DESCRIPTION	CHKD.	DATE	BY																																									
	CHECKED																																												
PROJECT NAME: BINK OILFIELD DEVELOPMENT GENERAL			<div></div> THE ORIGINAL AND ALL COPIES OF THIS DRAWING TOGETHER WITH THE CREDITIAL THEREIN ARE THE SOLE PROPERTY OF N.I.S.O.C / FIELDS																																										
PROJECT NO.: 871020			BINK OILFIELD DEVELOPMENT GENERAL																																										
EPC CONTRACTOR: <div></div>			EPD/EPC CONTRACTOR (GC): <div></div>																																										
DRAWING TITLE: TYPICAL INSTALLATION DETAILS & NOTES FOR LIGHTING SYSTEM			NO CONSTRUCTION PERMITTED UNLESS DRAWING APPROVED FOR CONSTRUCTION																																										
DRAWING NO. BK-CHNRL-PIEDCO-000-BL-DR-0003			BUDGET REF. LOCATION F P Z																																										
SHEET NO. 04 OF 38			SERIAL NO. 707225																																										
SCALE: A3			DATE: 04 OF 38																																										

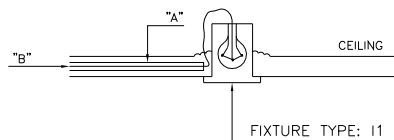


FIG: 1

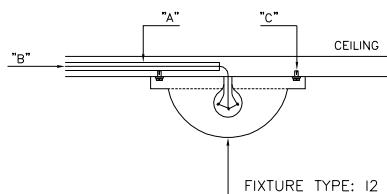


FIG: 2

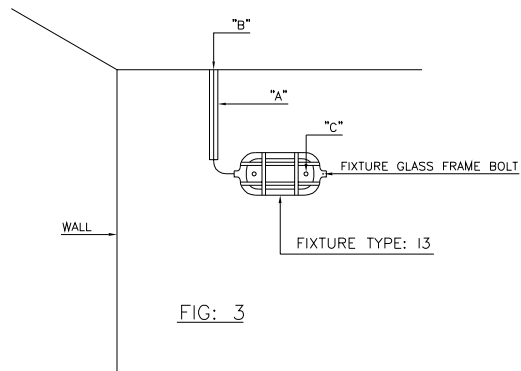


FIG: 3

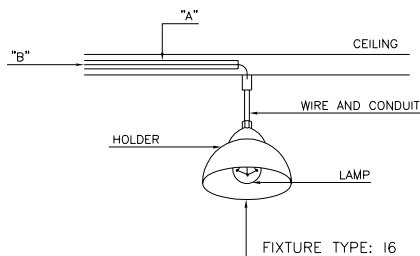


FIG: 4

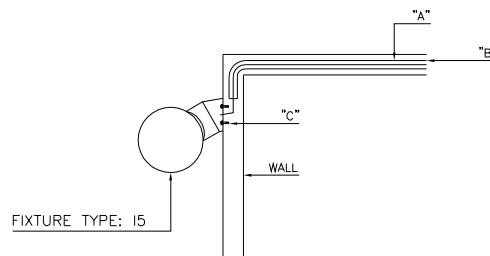
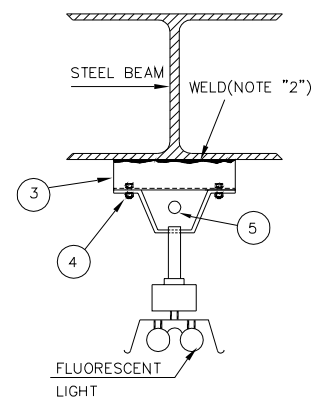


FIG: 5

ITEM	DESCRIPTION	QTY.	REMARKS
A	CONDUIT (RECESSED)	AS REQ.	
B	WIRE/CABLE	AS REQ.	
C	RAWLPLUG WITH WOODSCREW M6x50 AND WASHER	AS REQ.	

INCANDESCENT LAMPS FIXTURES INSTALLATION

REV.						DISCREPTION		CHECKED		REV. APPR.	
REV. DATE						BY DATE		BY DATE		BY DATE	
REV. DATE						BY DATE		BY DATE		BY DATE	
REV. DATE						BY DATE		BY DATE		BY DATE	
REV. DATE						BY DATE		BY DATE		BY DATE	
REV. DATE						BY DATE		BY DATE		BY DATE	
REV. DATE						BY DATE		BY DATE		BY DATE	
REV. DATE						BY DATE		BY DATE		BY DATE	
REV. DATE						BY DATE		BY DATE		BY DATE	
REV. DATE						BY DATE		BY DATE		BY DATE	
REV. DATE						BY DATE		BY DATE		BY DATE	
REV. DATE						BY DATE		BY DATE		BY DATE	
REV. DATE						BY DATE		BY DATE		BY DATE	
REV. DATE						BY DATE		BY DATE		BY DATE	
REV. DATE						BY DATE		BY DATE		BY DATE	
REV. DATE						BY DATE		BY DATE		BY DATE	
REV. DATE						BY DATE		BY DATE		BY DATE	
REV. DATE						BY DATE		BY DATE		BY DATE	
REV. DATE						BY DATE		BY DATE		BY DATE	
REV. DATE						BY DATE		BY DATE		BY DATE	
REV. DATE						BY DATE		BY DATE		BY DATE	
REV. DATE						BY DATE		BY DATE		BY DATE	
REV. DATE						BY DATE		BY DATE		BY DATE	
REV. DATE						BY DATE		BY DATE		BY DATE	
REV. DATE						BY DATE		BY DATE		BY DATE	
REV. DATE						BY DATE		BY DATE		BY DATE	
REV. DATE						BY DATE		BY DATE		BY DATE	
REV. DATE						BY DATE		BY DATE		BY DATE	
REV. DATE						BY DATE		BY DATE		BY DATE	
REV. DATE						BY DATE		BY DATE		BY DATE	
REV. DATE						BY DATE		BY DATE		BY DATE	
REV. DATE						BY DATE		BY DATE		BY DATE	
REV. DATE						BY DATE		BY DATE		BY DATE	
REV. DATE						BY DATE		BY DATE		BY DATE	
REV. DATE						BY DATE		BY DATE		BY DATE	
REV. DATE						BY DATE		BY DATE		BY DATE	
REV. DATE						BY DATE		BY DATE		BY DATE	
REV. DATE						BY DATE		BY DATE		BY DATE	
REV. DATE						BY DATE		BY DATE		BY DATE	
REV. DATE						BY DATE		BY DATE		BY DATE	
REV. DATE						BY DATE		BY DATE		BY DATE	
REV. DATE						BY DATE		BY DATE		BY DATE	
REV. DATE						BY DATE		BY DATE		BY DATE	
REV. DATE						BY DATE		BY DATE		BY DATE	
REV. DATE						BY DATE		BY DATE		BY DATE	
REV. DATE						BY DATE		BY DATE		BY DATE	
REV. DATE						BY DATE		BY DATE		BY DATE	
REV. DATE						BY DATE		BY DATE		BY DATE	
REV. DATE						BY DATE		BY DATE		BY DATE	
REV. DATE						BY DATE		BY DATE		BY DATE	
REV. DATE						BY DATE		BY DATE		BY DATE	
REV. DATE						BY DATE		BY DATE		BY DATE	
REV. DATE						BY DATE		BY DATE		BY DATE	
REV. DATE						BY DATE		BY DATE		BY DATE	
REV. DATE						BY DATE		BY DATE		BY DATE	
REV. DATE						BY DATE		BY DATE		BY DATE	
REV. DATE						BY DATE		BY DATE		BY DATE	
REV. DATE						BY DATE		BY DATE		BY DATE	
REV. DATE						BY DATE		BY DATE		BY DATE	
REV. DATE						BY DATE		BY DATE		BY DATE	
REV. DATE						BY DATE		BY DATE		BY DATE	
REV. DATE						BY DATE		BY DATE		BY DATE	
REV. DATE						BY DATE		BY DATE		BY DATE	
REV. DATE						BY DATE		BY DATE		BY DATE	
REV. DATE						BY DATE		BY DATE		BY DATE	
REV. DATE						BY DATE		BY DATE		BY DATE	
REV. DATE						BY DATE		BY DATE		BY DATE	
REV. DATE						BY DATE		BY DATE		BY DATE	
REV. DATE						BY DATE		BY DATE		BY DATE	
REV. DATE						BY DATE		BY DATE		BY DATE	
REV. DATE						BY DATE		BY DATE		BY DATE	
REV. DATE						BY DATE		BY DATE		BY DATE	
REV. DATE						BY DATE		BY DATE		BY DATE	
REV. DATE						BY DATE		BY DATE		BY DATE	
REV. DATE						BY DATE		BY DATE		BY DATE	
REV. DATE						BY DATE		BY DATE		BY DATE	
REV. DATE						BY DATE		BY DATE		BY DATE	
REV. DATE						BY DATE		BY DATE		BY DATE	
REV. DATE						BY DATE		BY DATE		BY DATE	
REV. DATE						BY DATE		BY DATE		BY DATE	
REV. DATE						BY DATE		BY DATE		BY DATE	
REV. DATE						BY DATE		BY DATE		BY DATE	
REV. DATE						BY DATE		BY DATE		BY DATE	
REV. DATE						BY DATE		BY DATE		BY DATE	
REV. DATE						BY DATE		BY DATE		BY DATE	
REV. DATE						BY DATE		BY DATE		BY DATE	
REV. DATE						BY DATE		BY DATE		BY DATE	
REV. DATE						BY DATE		BY DATE		BY DATE	
REV. DATE						BY DATE		BY DATE		BY DATE	
REV. DATE						BY DATE		BY DATE		BY DATE	
REV. DATE						BY DATE		BY DATE		BY DATE	
REV. DATE						BY DATE		BY DATE		BY DATE	
REV. DATE						BY DATE		BY DATE		BY DATE	
REV. DATE						BY DATE		BY DATE		BY DATE	
REV. DATE						BY DATE		BY DATE		BY DATE	
REV. DATE						BY DATE		BY DATE		BY DATE	
REV. DATE						BY DATE		BY DATE		BY DATE	
REV. DATE						BY DATE		BY DATE		BY DATE	
REV. DATE						BY DATE		BY DATE		BY DATE	
REV. DATE						BY DATE		BY DATE		BY DATE	
REV. DATE						BY DATE		BY DATE		BY DATE	
REV. DATE						BY DATE		BY DATE		BY DATE	
REV. DATE						BY DATE		BY DATE		BY DATE	
REV. DATE						BY DATE		BY DATE		BY DATE	
REV. DATE						BY DATE		BY DATE		BY DATE	
REV. DATE						BY DATE		BY DATE		BY DATE	
REV. DATE											



FRONT VIEW

Technical drawing of a mechanical part, showing a side view and a top view. The side view (top) shows a U-shaped component with a central vertical slot and a horizontal slot at the top. The top view (bottom) shows a rectangular component with a central vertical slot and a horizontal slot at the top. Dimensions are indicated: 30 (width of the top view), 40 (height of the side view), and 20 (width of the bottom view). Callouts 6 and 7 point to specific features.

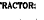


DETAIL "A"

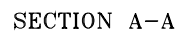
FLUORESCENT LIGHTING FIXTURE
(MOUNTED ON STEEL BEAM)

- ### LEGEND

No.	DESCRIPTION	QTY
①	JUNCTION BOX (3 WAY)	1-EA
②	JUNCTION BOX SUPPORT (L-60x30x6)	1-EA
③	FIXTURE SUPPORT (L-60x30x6)	1-EA
④	BOLT & NUT WITH 1-SPRING WASHER AND 2-FLAT WASHERS FOR FIXTURE	6-SET
⑤	RIGID STEEL CONDUIT 20mm. DIA.	
⑥	UNISTRUT CHANNEL	
⑦	UNISTRUT CLAMP	
⑧	UNION COUPLING	2-EA

KEY PLAN

D09	MAR.2003	I/	AJLHAGHA	MUSKABAN	MUSKABAN	
D08	OCT.2002	I/	AJLHAGHA	MUSKABAN	MUSKABAN	
D01	OCT.2001	I/P	AJLHAGHA	MUSKABAN	MUSKABAN	
D00	AUG.2001	I/P	MUSKABAN	MUSKABAN	SALAHUDDIN	
REV.	DATE	P.O.I.F	PREP.	CHEK.	APP.	AUT.
PROJECT NAME: BINAK OILFIELD DEVELOPMENT GENERAL						
PROJECT NO.: 971000			EPC CONTRACTOR: EPD/EPC CONTRACTOR (GC):			
<div><div></div><div></div></div> <div>BIRGAN ENERGY - DESIGN & INSPECTION COMPANIES</div>			<div><div></div><div>PETROIRAN DEVELOPMENT COMPANY</div></div> <div>PEDCO</div>			
BINAK OILFIELD DEVELOPMENT GENERAL						
DATE		SCALE		DRAWING BY		CHECKED BY PROJECT E
NO CONSTRUCTION PERMITTED UNLESS DRAWING APPROVED						
APPROVED FOR CONSTRUCTION				BY:		DATE:
BUDGET REF.	LOCATION	SIZE	CLASS	SERIAL NO.	SHEET	REVISION
008-070-BI04	F	2	P	707225	06 OF 39	DOO



FLUORSCENT LIGHTING FIXTURE
(MOUNTED ON STEEL COLUMN)

LEGEND

REFERENCE DRAWING

DRG. No.IPSJ-D-EL-300

KEY PL

No.	DESCRIPTION	QTY
①	SUPPORT (C-100x50x6)	1-EA
②	JUNCTION BOX (3 WAY)	2-EA
③	JUNCTION BOX SUPPORT (C-60x30x6)	1-EA
④	FIXTURE SUPPORT (C-60x30x6)	1-EA
⑤	BOLT & NUT WITH 1-SPRING WASHER AND 2-FLAT WASHERS FOR FIXTURE	6-SET
⑥	BLIND PLUG	
⑦	UNISTRUT CHANNEL	
⑧	UNISTRUT CLAMP	
⑨	RIGID STEEL CONDUIT 20mm. DIA.	
⑩	UNION COUPLING	2-EA



و کلیه نسخ این نقشه و حق انقباض متعلق به شرکت ملی مناطق نفت خیز جنوب می باشد.

THE ORIGINAL AND ALL COPIES OF THIS DRAWING TOGETHER WITH
THE COPYRIGHT THEREIN ARE THE SOLE PROPERTY OF
N.I.S.O.C./ FIELDS

BINAK OILFIELD DEVELOPMENT
GENERAL

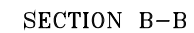
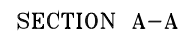
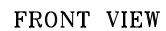
DATE	SCALE	DRAWING BY	CHECKED BY	PROJECT E
------	-------	------------	------------	-----------

NO CONSTRUCTION PERMITTED UNLESS DRAWING APPROVED

APPROVED FOR CONSTRUCTION	BY:	DATE:
---------------------------	-----	-------

(VENDOR TITLE BLOCK)***

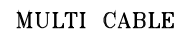
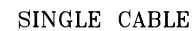
SCALE	SIZE	DRAWING NO.	SHEET NO.	REV.	BUDGET REF.	LOCATION	SIZE	CLASS	SERIAL NO.	SHEET	REVISION
N.T.S	A3	BK-GNRL-PEDCO-000-EL-DW-0003	07 OF 39	003	003-073-0184	F	2	P	707225	07 OF 39	003



No.	DESCRIPTION	QTY.
①	SUPPORT ([-100x50x6)	1-EA
②	JUNCTION BOX (3-WAY)	2-EA
③	JUNCTION BOX SUPPORT ([-60x30x6)	1-EA
④	FIXTURE SUPPORT ([-60x30x6)	1-EA
⑤	BOLT & NUT WITH 1-SPRING WASHER AND 2-FLAT WASHERS FOR FIXTURE	6-SETS
⑥	UNISTRUT CHANNEL	
⑦	UNISTRUT CLAMP	
⑧	MASONRY ANCHOR M8	
⑨	RIGID STEEL CONDUIT 20mm. DIA.	
⑩	BLIND PLUG	1-EA
⑪	UNION COUPLING	1-EA
⑫	ELBOW	1-EA



D05	MAR.2023	P1	KJ.MHAGHAN	J.FAHREHIAN	A.JABBARZADEH																																																																																																																																																																																																																																																																																																																																																																																																																																																																																																																																																																																																																																																																																																																																																																																																																																																																																																																																																																																																																																																																																																																																																																																																																																																																																																																																																																																																												
-----	----------	----	------------	-------------	---------------	--	--	--	--	--	--	--	--	--	--	--	--	--	--	--	--	--	--	--	--	--	--	--	--	--	--	--	--	--	--	--	--	--	--	--	--	--	--	--	--	--	--	--	--	--	--	--	--	--	--	--	--	--	--	--	--	--	--	--	--	--	--	--	--	--	--	--	--	--	--	--	--	--	--	--	--	--	--	--	--	--	--	--	--	--	--	--	--	--	--	--	--	--	--	--	--	--	--	--	--	--	--	--	--	--	--	--	--	--	--	--	--	--	--	--	--	--	--	--	--	--	--	--	--	--	--	--	--	--	--	--	--	--	--	--	--	--	--	--	--	--	--	--	--	--	--	--	--	--	--	--	--	--	--	--	--	--	--	--	--	--	--	--	--	--	--	--	--	--	--	--	--	--	--	--	--	--	--	--	--	--	--	--	--	--	--	--	--	--	--	--	--	--	--	--	--	--	--	--	--	--	--	--	--	--	--	--	--	--	--	--	--	--	--	--	--	--	--	--	--	--	--	--	--	--	--	--	--	--	--	--	--	--	--	--	--	--	--	--	--	--	--	--	--	--	--	--	--	--	--	--	--	--	--	--	--	--	--	--	--	--	--	--	--	--	--	--	--	--	--	--	--	--	--	--	--	--	--	--	--	--	--	--	--	--	--	--	--	--	--	--	--	--	--	--	--	--	--	--	--	--	--	--	--	--	--	--	--	--	--	--	--	--	--	--	--	--	--	--	--	--	--	--	--	--	--	--	--	--	--	--	--	--	--	--	--	--	--	--	--	--	--	--	--	--	--	--	--	--	--	--	--	--	--	--	--	--	--	--	--	--	--	--	--	--	--	--	--	--	--	--	--	--	--	--	--	--	--	--	--	--	--	--	--	--	--	--	--	--	--	--	--	--	--	--	--	--	--	--	--	--	--	--	--	--	--	--	--	--	--	--	--	--	--	--	--	--	--	--	--	--	--	--	--	--	--	--	--	--	--	--	--	--	--	--	--	--	--	--	--	--	--	--	--	--	--	--	--	--	--	--	--	--	--	--	--	--	--	--	--	--	--	--	--	--	--	--	--	--	--	--	--	--	--	--	--	--	--	--	--	--	--	--	--	--	--	--	--	--	--	--	--	--	--	--	--	--	--	--	--	--	--	--	--	--	--	--	--	--	--	--	--	--	--	--	--	--	--	--	--	--	--	--	--	--	--	--	--	--	--	--	--	--	--	--	--	--	--	--	--	--	--	--	--	--	--	--	--	--	--	--	--	--	--	--	--	--	--	--	--	--	--	--	--	--	--	--	--	--	--	--	--	--	--	--	--	--	--	--	--	--	--	--	--	--	--	--	--	--	--	--	--	--	--	--	--	--	--	--	--	--	--	--	--	--	--	--	--	--	--	--	--	--	--	--	--	--	--	--	--	--	--	--	--	--	--	--	--	--	--	--	--	--	--	--	--	--	--	--	--	--	--	--	--	--	--	--	--	--	--	--	--	--	--	--	--	--	--	--	--	--	--	--	--	--	--	--	--	--	--	--	--	--	--	--	--	--	--	--	--	--	--	--	--	--	--	--	--	--	--	--	--	--	--	--	--	--	--	--	--	--	--	--	--	--	--	--	--	--	--	--	--	--	--	--	--	--	--	--	--	--	--	--	--	--	--	--	--	--	--	--	--	--	--	--	--	--	--	--	--	--	--	--	--	--	--	--	--	--	--	--	--	--	--	--	--	--	--	--	--	--	--	--	--	--	--	--	--	--	--	--	--	--	--	--	--	--	--	--	--	--	--	--	--	--	--	--	--	--	--	--	--	--	--	--	--	--	--	--	--	--	--	--	--	--	--	--	--	--	--	--	--	--	--	--	--	--	--	--	--	--	--	--	--	--	--	--	--	--	--	--	--	--	--	--	--	--	--	--	--	--	--	--	--	--	--	--	--	--	--	--	--	--	--	--	--	--	--	--	--	--	--	--	--	--	--	--	--	--	--	--	--	--	--	--	--	--	--	--	--	--	--	--	--	--	--	--	--	--	--	--	--	--	--	--	--	--	--	--	--	--	--	--	--	--	--	--	--	--	--	--	--	--	--	--	--	--	--	--	--	--	--	--	--	--	--	--	--	--	--	--	--	--	--	--	--	--	--	--	--	--	--	--	--	--	--	--	--	--	--	--	--	--	--	--	--	--	--	--	--	--	--	--	--	--	--	--	--	--	--	--	--	--	--	--	--	--	--	--	--	--	--	--	--	--	--	--	--	--	--	--	--	--	--	--	--	--	--	--	--	--	--	--	--	--	--	--	--	--	--	--	--	--	--	--	--	--	--	--	--	--	--	--	--	--	--	--	--	--	--	--	--	--	--	--	--	--	--	--	--	--	--	--	--	--	--	--	--	--	--	--	--	--	--	--	--	--	--	--	--	--	--	--	--	--	--	--	--	--	--	--	--	--	--	--	--	--	--	--	--	--	--	--	--	--	--	--	--	--	--	--	--	--	--	--	--	--	--	--	--	--	--	--	--	--	--	--	--	--	--	--	--	--	--	--	--	--	--	--	--	--	--	--	--	--	--	--	--	--	--	--	--	--	--	--	--	--	--	--	--	--	--	--	--	--	--	--	--	--	--	--	--	--	--	--	--	--	--	--	--	--	--	--	--	--	--	--	--	--	--	--	--	--	--	--	--	--	--	--	--	--	--	--	--	--	--	--	--	--	--	--	--	--	--	--	--	--	--	--	--	--	--	--	--	--	--	--	--	--	--	--	--	--	--	--	--	--	--	--	--	--	--	--	--	--	--	--	--	--	--	--	--	--	--	--	--	--	--	--	--	--	--	--	--	--	--	--	--	--	--	--	--	--	--	--	--	--	--	--	--	--	--	--	--	--	--	--	--	--	--	--	--	--	--	--	--	--	--	--	--	--	--	--	--	--	--	--	--	--	--	--	--	--	--	--	--	--	--	--	--	--	--	--	--	--	--	--	--	--	--	--	--	--	--	--	--	--	--	--	--	--	--	--	--	--	--	--	--	--	--	--	--	--	--	--	--	--	--	--	--	--	--	--	--	--	--	--	--	--	--	--	--	--	--	--	--



No.	DESCRIPTION	QTY
①	SUPPORT PIPE DN 25-40 (1"-1 1/2")	1-EA
②	SUPPORT (L-50x50x5)	2-EA
③	U-TYPE BOLT (M6) FOR SUPPORT PIPE	2-EA
④	JUNCTION BOX	1-EA

[illegible]

NOTES	
1-	FOR TYPE OF LIGHTING FIXTURE, MOUNTING ELEVATION, etc. SEE RELEVANT LIGHTING LAYOUT DRAWINGS.
2-	FOR INSTALLATION OF CONDUIT SUPPORT, REFER TO SHT. 25.
3-	FOR INSTALLATION OF JUNCTION BOX REFER TO SHT. 26.
4-	TO BE WELDED TO PLATFORM IN FIELD.
5-	ALL DIMENSIONS ARE IN MILLIMETERS.

LEGEND

REFERENCE DRAWING	DRG. No.
IPS Lighting Installation Details (Category 300)	IPS-D-EL-300

KEY PLAN

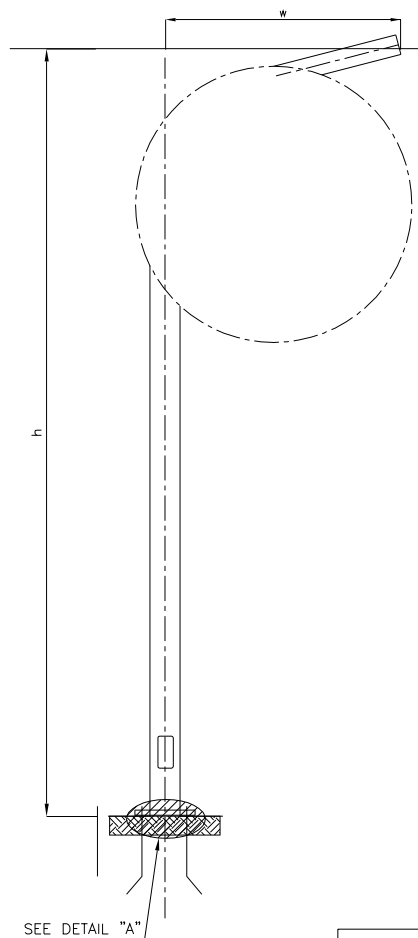
اصل و کاپیہ نسخہ این نقشہ و حق القیاسی متعلق بہ شرکت ملی مناطق نفت خیز جنوب مہیشدہ۔
 THE ORIGINAL AND ALL COPIES OF THIS DRAWING TOGETHER WITH
 THE COPYRIGHT THEREIN ARE THE SOLE PROPERTY OF
 N.I.S.O.C./ FIELDS

BINAK OILFIELD DEVELOPMENT GENERAL				
DATE	SCALE	DRAWING BY	CHECKED BY	PROJECT ENG.

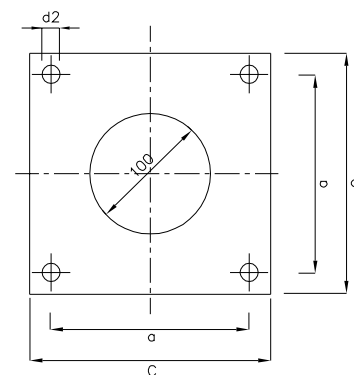
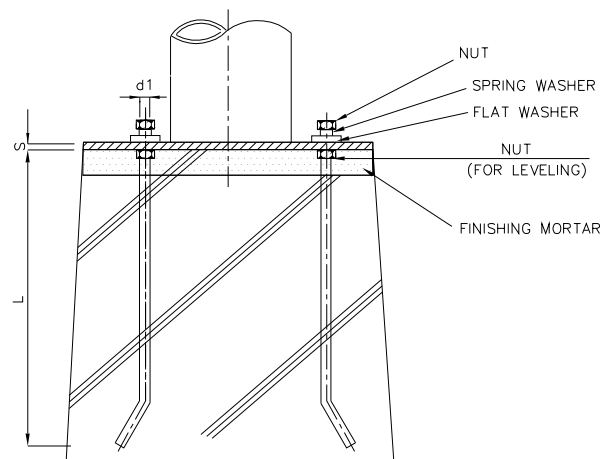
NO CONSTRUCTION PERMITTED UNLESS DRAWING APPROVED								
APPROVED FOR CONSTRUCTION					BY:	DATE:		
NO.	BUDGET REF.	LOCATION	SIZE	CLASS	SERIAL NO.	SHEET	REVISION	
3	008-073-9184	F	2	P	707225	10 OF 39	D03	

FLUORESCENT LIGHTING FIXTURE
(STAND TYPE ON PLATFORM)

KEY PLAN



DETAIL "A"



h (m)	c	s_{min.}	a	d1
≤ 5	260	8	200	M18
≤ 12	400	10	300	M24
≤ 20	400 500	20	300 400	M27

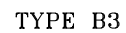
NOMINAL HEIGHT h (m)	PROJECTION w (m)
2	0.75
3	0.85
4	1
5	1
5	1.20
6	1.15
6	1.30

d1	d2	L min.	FOUNDATION SIZE	
			WARM REGIONS	COLD REGIONS
M18	22	400	600x600x650	600x600x1150
M24	30	600	600x600x750	600x600x1150
M27	33	700	600x600x1000	600x600x1000

BASE PLATE
(RECOMMENDED FOR NON-INDUSTRIAL USE)

NOTES	
1- DIMENSIONS ARE IN MILLIMETERS OR METERS AS APPROPRIATE.	
LEGEND	
REFERENCE DRAWING	DRG. No.
IPS Lighting Installation Details (Category 300)	[PS-D-BL-300]
KEY PLAN	

[illegible]

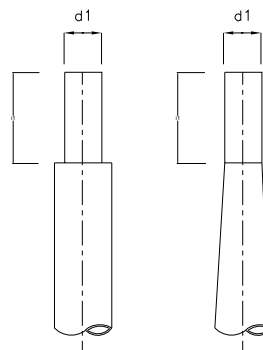


(RECOMMENDED FOR NON-INDUSTRIAL USE)

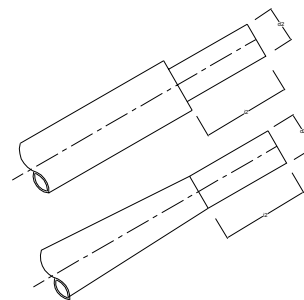
THE SHAPE OF
THE BRACKET IS NOT
SPECIFIED IN
THIS STANDARD

LANTERN FIXING ANGLE 5° OR 15°

NOMINAL HEIGHT h (m)	PROJECTION w w (m)
5	
6	0.75
8	1.25
10	2
12	3
15	
18	



d1	i1
60	70
76	130
102	250



d2	i2
42	100
60	100 250

DETAIL "D" (TYPE 2)
FOR SIDE ENTRY

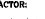


NOTES

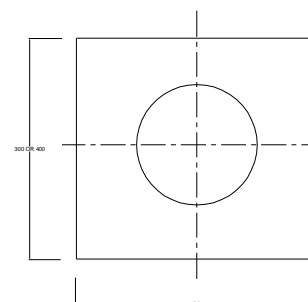
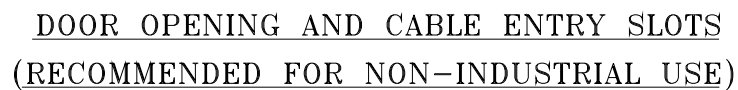
1- "W" TO BE EQUAL OR LESS THAN $h/4$.
2- DIMENSIONS ARE IN MILLIMETERS OR METERS AS APPROPRIATE.

LEGEND

REFERENCE DRAWING	DRG. No.
IPS Lighting Installation Details (Category 300)	IPS-D-EL-3

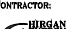

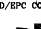
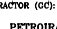
KEY PLAN

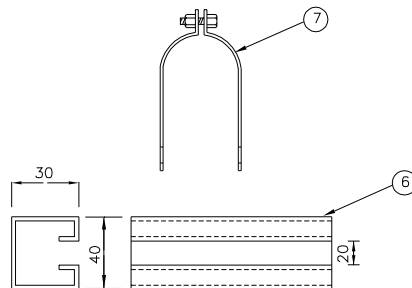
D09	MAR.2003	I/	AJLHAGHA	MUSKABAN	MUSKABAN	
D08	OCT.2002	I/	AJLHAGHA	MUSKABAN	MUSKABAN	
D01	OCT.2001	I/P	AJLHAGHA	MUSKABAN	MUSKABAN	
D00	AUG.2001	I/P	MUSKABAN	MUSKABAN	SALAHUDDIN	
REV.	DATE	P.O.I.F	PREP.	CHEK.	APP.	AUT.
PRO/ECT NAME: BINAK OILFIELD DEVELOPMENT GENERAL						
PRO/ECT NO.: 971000						
EPC CONTRACTOR:			EPD/EPC CONTRACTOR (GC):			
 						
BIRGAN ENERGY - DESIGN & INSPECTION COMPANIES			PETROIRAN DEVELOPMENT COMPANY PEDCO			
BINAK OILFIELD DEVELOPMENT GENERAL						
DATE		SCALE		DRAWING BY		CHECKED BY PROJECT E
NO CONSTRUCTION PERMITTED UNLESS DRAWING APPROVED						
APPROVED FOR CONSTRUCTION				BY:		DATE:
BUDGET REF.	LOCATION	SIZE	CLASS	SERIAL NO.	SHEET	REVISION
008-070-BI04	F	2	P	707225	14 OF 38	DOO



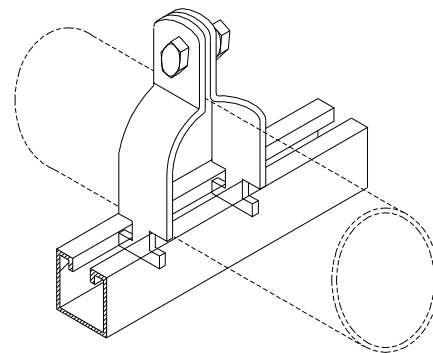
NOMINAL HEIGHT	PLANTING DEPTH		
h (m)	e (SEE NOTE 2) (mm)		
≤5	600	800	1000
6	800	1000	1200
8	1000	1200	1500
10	1200	1500	1700
12	1500	1700	2000
15	1500	2000	2500
18	1500	2000	—
20	1800	—	—

a (mm)	b (mm)
200	75
300	85
400	100
500	100
500	120
600	115
600	130

D00	MAR.2003	PI	ALHABIA	ALHABIA	ALHABIA					***	*****	00.00	00.0000	00.00					
D01	OCT.2002	PI	ALHABIA	ALHABIA	ALHABIA							BY	DATE	BY	DATE				
D01	OCT.2001	PI	ALHABIA	ALHABIA	ALHABIA					REV.	DESCRIPTION	CHECKED	REV.	APPR.					
D02	AUG.2001	PI	ALHABIA	ALHABIA	ALHABIA					کلیه این نقشه و جزو اقسام شده در کارک می باشد و حق مالکیت این کار جزو پیمانکار می باشد.									
REV.	DATE	P.O.L.I	PREP.	CHK.	APP.	AUT.	THE ORIGINAL AND ALL COPIES OF THIS DRAWING TOGETHER WITH THE COPYRIGHT THEREIN ARE THE SOLE PROPERTY OF N.I.S.O.C./ FIELDS												
PROJECT NAME:										BINAK OILFIELD DEVELOPMENT GENERAL									
PROJECT NO.:										971000									
EPC CONTRACTOR:										EPD/EPC CONTRACTOR (GC):									
  																			
HIRAN ENERGY - DESIGN & INSPECTION COMPANIES										BINAK OILFIELD DEVELOPMENT GENERAL									
DRAWING TITLE:										NO CONSTRUCTION PERMITTED UNLESS DRAWING APPROVED									
TYPICAL INSTALLATION DETAILS & NOTES FOR LIGHTING SYSTEM										APPROVED FOR CONSTRUCTION BY: DATE: REVISION									
SCALE	SIZE	DRAWING NO.				SHEET NO.	REV.	BUDGET REF.	LOCATION	SIZE	CLASS	SERIAL NO.	SHEET	REV.					
N.T.S	A5	BK-GENERAL-PEDCO-000-EL-DC-0003				15 OF 30	000	000-070-0104	F	2	P	707225	15 OF 30	000					



DETAIL "A"



ISOMETRIC VIEW OF
UNISTRUT CHANNEL & CLAMP

MERCURY VAPOR LIGHTING FIXTURE
(MOUNTED ON STEEL BEAM)




NOTES
1- FOR TYPE OF LIGHTING FIXTURE, MOUNTING ELEVATION SEE RELEVANT LIGHTING LAYOUT DRAWINGS.
2- TO BE WELDED TO STEEL BEAM IN FIELD.
3- FOR INSTALLATION OF CONDUIT SUPPORT, REFER TO SHT. 25.
4- FOR INSTALLATION OF JUNCTION BOX, REFER TO SHT. 27.
5- ALL DIMENSIONS ARE IN MILLIMETERS.

LEGEND

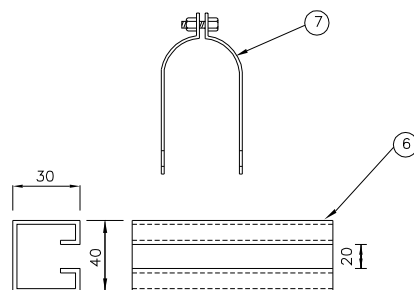
REFERENCE DRAWING	DRG. No.
IPS Lighting Installation Details (Category 300)	IPS-D-EL-300

KEY PLAN

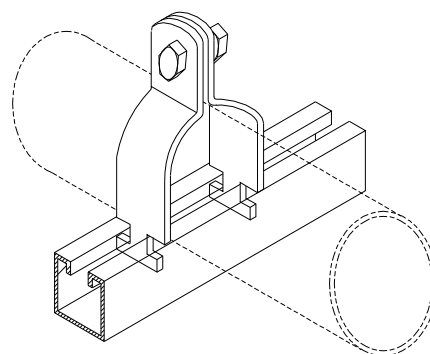
No.	DESCRIPTION	QTY
①	UNION COUPLING	1-EA
②	JUNCTION BOX SUPPORT ((-60x30x6)	1-EA
③	BOLT & NUT WITH 1-SPRING WASHER AND 2-FLAT WASHERS	4-SET
④	JUNCTION BOX (3WAY)	1-EA
⑤	RIGID STEEL CONDUIT 20mm DIA.	
⑥	UNISTRUT CHANNEL	
⑦	UNISTRUT CLAMP	
⑧	SEALING FITTING	1-EA

<table><tr><td>D05</td><td>MAR.2023</td><td>PI</td><td>KUMARNA</td><td>M/ANJANAM</td><td>M/ANJANAM</td><td></td></tr><tr><td>D02</td><td>OCT.2022</td><td>PI</td><td>KUMARNA</td><td>M/ANJANAM</td><td>M/ANJANAM</td><td></td></tr><tr><td>D01</td><td>OCT.2021</td><td>PIPI</td><td>KUMARNA</td><td>M/ANJANAM</td><td>M/ANJANAM</td><td></td></tr><tr><td>D00</td><td>AUG.2021</td><td>IPPI</td><td>MACHINERNA</td><td>M/ANJANAM</td><td>S/ANJANAM</td><td></td></tr><tr><td>REV.</td><td>DATE</td><td>P.O.I.E</td><td>PREP.</td><td>CHK.</td><td>APP.</td><td>AUT.</td></tr></table>							D05	MAR.2023	PI	KUMARNA	M/ANJANAM	M/ANJANAM		D02	OCT.2022	PI	KUMARNA	M/ANJANAM	M/ANJANAM		D01	OCT.2021	PIPI	KUMARNA	M/ANJANAM	M/ANJANAM		D00	AUG.2021	IPPI	MACHINERNA	M/ANJANAM	S/ANJANAM		REV.	DATE	P.O.I.E	PREP.	CHK.	APP.	AUT.	<table><tr><td>***</td><td>*****</td><td>REV</td><td>DATE</td><td>REV</td><td>DATE</td><td>REV</td><td>DATE</td></tr><tr><td>REV.</td><td>DISCUSSION</td><td>BY</td><td>DATE</td><td>BY</td><td>DATE</td><td>BY</td><td>DATE</td></tr><tr><td></td><td></td><td>CHECKED</td><td></td><td>REV.</td><td>APPR.</td><td></td><td></td></tr></table>							***	*****	REV	DATE	REV	DATE	REV	DATE	REV.	DISCUSSION	BY	DATE	BY	DATE	BY	DATE			CHECKED		REV.	APPR.		
D05	MAR.2023	PI	KUMARNA	M/ANJANAM	M/ANJANAM																																																																			
D02	OCT.2022	PI	KUMARNA	M/ANJANAM	M/ANJANAM																																																																			
D01	OCT.2021	PIPI	KUMARNA	M/ANJANAM	M/ANJANAM																																																																			
D00	AUG.2021	IPPI	MACHINERNA	M/ANJANAM	S/ANJANAM																																																																			
REV.	DATE	P.O.I.E	PREP.	CHK.	APP.	AUT.																																																																		
***	*****	REV	DATE	REV	DATE	REV	DATE																																																																	
REV.	DISCUSSION	BY	DATE	BY	DATE	BY	DATE																																																																	
		CHECKED		REV.	APPR.																																																																			
PROJECT NAME: BINAK OILFIELD DEVELOPMENT GENERAL							أول و الثاني إلى آخره من الجداول متعلق بتركيبات مناطق تحت غير جاري ميدان THE ORIGINAL AND ALL COPIES OF THIS DRAWING TOGETHER WITH THE COPYRIGHT THEREIN ARE THE SOLE PROPERTY OF N.I.S.O.C./ FIELDS																																																																	
PROJECT NO.: 971020																																																																								
EPC CONTRACTOR: 							EPC/EPC CONTRACTOR (GC): 																																																																	
BINAK OILFIELD DEVELOPMENT GENERAL							BINAK OILFIELD DEVELOPMENT GENERAL																																																																	
<table><tr><td>DATE</td><td>SCALE</td><td>DRAWING</td><td>BY</td><td>CHECKED</td><td>BY</td><td>PROJECT ENG.</td></tr><tr><td></td><td></td><td></td><td></td><td></td><td></td><td></td></tr></table>							DATE	SCALE	DRAWING	BY	CHECKED	BY	PROJECT ENG.								<table><tr><td>DATE</td><td>SCALE</td><td>DRAWING</td><td>BY</td><td>CHECKED</td><td>BY</td><td>PROJECT ENG.</td></tr><tr><td></td><td></td><td></td><td></td><td></td><td></td><td></td></tr></table>							DATE	SCALE	DRAWING	BY	CHECKED	BY	PROJECT ENG.																																						
DATE	SCALE	DRAWING	BY	CHECKED	BY	PROJECT ENG.																																																																		
DATE	SCALE	DRAWING	BY	CHECKED	BY	PROJECT ENG.																																																																		
DRAWING TITLE: TYPICAL INSTALLATION DETAILS & NOTES FOR LIGHTING SYSTEM							NO CONSTRUCTION PERMITTED UNLESS DRAWING APPROVED																																																																	
<table><tr><th>SCALE</th><th>SIZE</th><th>DRAWING NO.</th><th>SHEET NO.</th><th>REV.</th></tr><tr><td>N.T.S</td><td>A3</td><td>BK-CHNLA-PIEDCO-COO-LES-DFW-0003</td><td>16 OF 39</td><td>D03</td></tr></table>							SCALE	SIZE	DRAWING NO.	SHEET NO.	REV.	N.T.S	A3	BK-CHNLA-PIEDCO-COO-LES-DFW-0003	16 OF 39	D03	<table><tr><th>APPROVED FOR CONSTRUCTION</th><th>BY:</th><th>DATE:</th></tr><tr><td>BUDGET REF.</td><td>LOCATION</td><td>SIZE</td><td>CLASS</td><td>SERIAL NO.</td><td>SH2827</td><td>REVISION</td></tr><tr><td>008-079-8154</td><td>F 2 P</td><td>707225</td><td>16 OF 39</td><td>D03</td><td></td><td></td></tr></table>							APPROVED FOR CONSTRUCTION	BY:	DATE:	BUDGET REF.	LOCATION	SIZE	CLASS	SERIAL NO.	SH2827	REVISION	008-079-8154	F 2 P	707225	16 OF 39	D03																																		
SCALE	SIZE	DRAWING NO.	SHEET NO.	REV.																																																																				
N.T.S	A3	BK-CHNLA-PIEDCO-COO-LES-DFW-0003	16 OF 39	D03																																																																				
APPROVED FOR CONSTRUCTION	BY:	DATE:																																																																						
BUDGET REF.	LOCATION	SIZE	CLASS	SERIAL NO.	SH2827	REVISION																																																																		
008-079-8154	F 2 P	707225	16 OF 39	D03																																																																				

(VENDOR TITLE BLOCK)**



DETAIL "A"



ISOMETRIC VIEW OF UNISTRUT CHANNEL & CLAMP

MERCURY VAPOR LIGHTING FIXTURE
(MOUNTED ON CONCRETE BEAM)


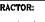
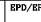
- | NOTES | |
|-------|---|
| 1- | FOR TYPE OF LIGHTING FIXTURE, MOUNTING ELEVATION SEE RELEVANT LIGHTING LAYOUT DRAWINGS. |
| 2- | TO BE WELDED TO EMBEDDED PLATE IN FIELD OR FIXED WITH MASONRY ANCHOR. |
| 3- | FOR INSTALLATION OF CONDUIT SUPPORT, REFER TO SHT. 25. |
| 4- | FOR INSTALLATION OF JUNCTION BOX, REFER TO SHT. 27. |
| 5- | THE LIGHTING FIXTURE MAY BE MOUNTED DIRECTLY TO THE CONCRETE BEAM WITHOUT SUPPORT. |
| 6- | ALL DIMENSIONS ARE IN MILLIMETERS. |

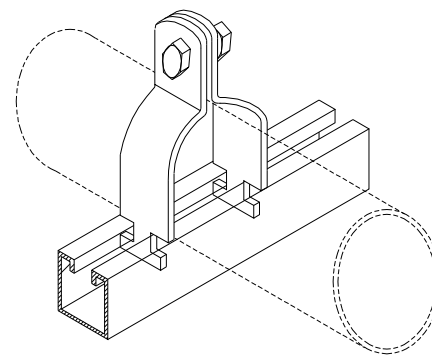
LEGEND

REFERENCE DRAWING	DRG. No.
IPS Lighting Installation Details (Category 300)	IPS-D-EL-300

KEY PLAN

No.	DESCRIPTION	QTY.
①	UNION COUPLING	1-EA
②	JUNCTION BOX SUPPORT ([-60x30x6)	1-EA
③	BOLT & NUT WITH 1-SPRING WASHER AND 2-FLAT WASHERS	4-SETS
④	JUNCTION BOX (3WAY)	1-EA
⑤	RIGID STEEL CONDUIT 20mm. DIA.	
⑥	UNISTRUT CHANNEL	
⑦	UNISTRUT CLAMP	
⑧	MASSONRY ANCHOR	
⑨	SEALING FITTING	1-EA

D09	MAR.2003	I/	AJLHADA	MUSKABAN	MUSKABAN	
D08	OCT.2002	I/	AJLHADA	MUSKABAN	MUSKABAN	
D01	OCT.2001	I/	AJLHADA	MUSKABAN	MUSKABAN	
D00	AUG.2001	I/	MUSKABAN	MUSKABAN	SILVAKULU	
REV.	DATE	P.O.I.F	PREP.	CHEK.	APP.	AUT.
PRO/ECT NAME: BINAK OILFIELD DEVELOPMENT GENERAL						
PRO/ECT NO.: 971000						
EPC CONTRACTOR:			EPD/EPC CONTRACTOR (GC):			
<div></div>			<div></div>			
BIRGAN ENERGY - DESIGN & INSPECTION COMPANIES			PETROIRAN DEVELOPMENT COMPANY			
BINAK OILFIELD DEVELOPMENT GENERAL						
DATE		SCALE		DRAWING BY		CHECKED BY PROJECT E
NO CONSTRUCTION PERMITTED UNLESS DRAWING APPROVED						
APPROVED FOR CONSTRUCTION				BY:		DATE:
BUDGET REF.	LOCATION	SIZE	CLASS	SERIAL NO.	SHEET	REVISION
008-070-BIKR4	F	2	P	707225	17 OF 38	DOO



Technical drawing of a mechanical part. The drawing includes a side view and a top view. The side view shows a U-shaped component with a width of 30 and a height of 40. The top view shows a rectangular base with a width of 20 and a length of 40. A callout (6) points to a bolt on the top view.

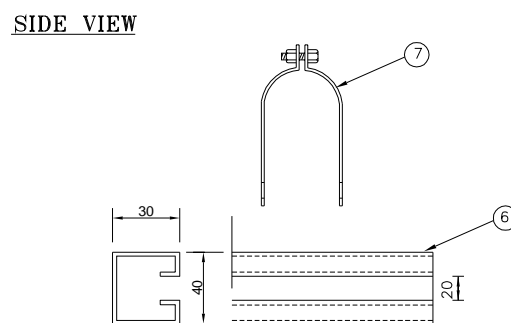
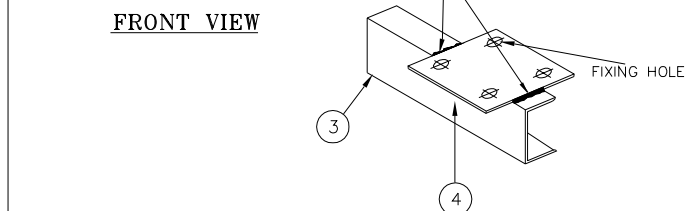
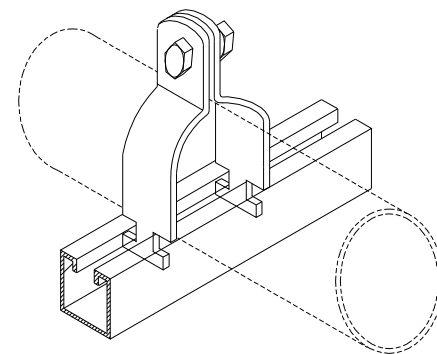
MERCURY VAPOR LIGHTING FIXTURE
(BRACKET TYPE)

- ### LEGEND





KEY PLAN

[illegible]

(VENDOR TITLE BLOCK)**



No.	DESCRIPTION	QTY
①	POWER CABLE FOR LIGHTING	1-EA
②	BOLT & NUT WITH 1-SPRING WASHER AND 2-FLAT WASHERS FOR FIXTURE	4-SET
③	FIXTURE SUPPORT (1-100x50x6)	1-EA
④	MOUNTING PLATE (200x200x6)	1-EA
⑤	RIGID STEEL CONDUIT 20mm.DIA.	
⑥	UNISTRUT CHANNEL	
⑦	UNISTRUT CLAMP	
⑧	BOLT & NUT WITH 1-SPRING WASHER AND 2-FLAT WASHERS FOR BOX	4-SET
⑨	BALLAST BOX SUPPORT (L-50x50x6)	
⑩	SEALING FITTING	3-EA
⑪	UNION COUPLING	1-EA
⑫	SHORT NIPPLE	1-EA

<table><tr><td>D03</td><td>MAR.2023</td><td>PI</td><td>KJ.MAGHAR</td><td>KJ.MAGHAR</td><td>KJ.MAGHAR</td><td></td><td></td><td></td><td></td></tr><tr><td>D02</td><td>OCT.2022</td><td>PI</td><td>KJ.MAGHAR</td><td>KJ.MAGHAR</td><td>KJ.MAGHAR</td><td></td><td></td><td></td><td></td></tr><tr><td>D01</td><td>OCT.2022</td><td>PI</td><td>KJ.MAGHAR</td><td>KJ.MAGHAR</td><td>KJ.MAGHAR</td><td></td><td></td><td></td><td></td></tr><tr><td>D00</td><td>AUG.2021</td><td>PI</td><td>KJ.MAGHAR</td><td>KJ.MAGHAR</td><td>KJ.MAGHAR</td><td></td><td></td><td></td><td></td></tr><tr><td>REV.</td><td>DATE</td><td>P.O.L/I</td><td>PREP.</td><td>CHK.</td><td>APP.</td><td>AUT.</td><td></td><td></td><td></td></tr></table>										D03	MAR.2023	PI	KJ.MAGHAR	KJ.MAGHAR	KJ.MAGHAR					D02	OCT.2022	PI	KJ.MAGHAR	KJ.MAGHAR	KJ.MAGHAR					D01	OCT.2022	PI	KJ.MAGHAR	KJ.MAGHAR	KJ.MAGHAR					D00	AUG.2021	PI	KJ.MAGHAR	KJ.MAGHAR	KJ.MAGHAR					REV.	DATE	P.O.L/I	PREP.	CHK.	APP.	AUT.				<table><tr><td>REV.</td><td>DESCRIPTION</td><td>BY</td><td>DATE</td><td>BY</td><td>DATE</td><td>BY</td><td>DATE</td><td>BY</td><td>DATE</td></tr><tr><td></td><td></td><td></td><td></td><td></td><td></td><td></td><td></td><td></td><td></td></tr></table>										REV.	DESCRIPTION	BY	DATE	BY	DATE	BY	DATE	BY	DATE										
D03	MAR.2023	PI	KJ.MAGHAR	KJ.MAGHAR	KJ.MAGHAR																																																																																				
D02	OCT.2022	PI	KJ.MAGHAR	KJ.MAGHAR	KJ.MAGHAR																																																																																				
D01	OCT.2022	PI	KJ.MAGHAR	KJ.MAGHAR	KJ.MAGHAR																																																																																				
D00	AUG.2021	PI	KJ.MAGHAR	KJ.MAGHAR	KJ.MAGHAR																																																																																				
REV.	DATE	P.O.L/I	PREP.	CHK.	APP.	AUT.																																																																																			
REV.	DESCRIPTION	BY	DATE	BY	DATE	BY	DATE	BY	DATE																																																																																
PROJECT NAME: BINAQ OILFIELD DEVELOPMENT GENERAL										اصل و کاپیه دین این سند و دو کپی از نقشه های مشورتی در اختیار تمام ذینفعان می باشد.																																																																															
PROJECT NO.: 971020										 THE ORIGINAL AND ALL COPIES OF THIS DRAWING TOGETHER WITH THE COPYRIGHT THEREON ARE THE SOLE PROPERTY OF N.I.S.O.C. / FIELDS																																																																															
EPC CONTRACTOR:   HIRGAN ENERGY - DESIGN & INSPECTION COMPANIES										EPD/EPC CONTRACTOR (GC):  PETROIRAN DEVELOPMENT COMPANY																																																																															
BINAQ OILFIELD DEVELOPMENT GENERAL										BINAQ OILFIELD DEVELOPMENT GENERAL																																																																															
<table><tr><td>DATE</td><td>SCALE</td><td>DRAWING BY</td><td>CHECKED BY</td><td>PROJECT ENG.</td></tr><tr><td></td><td></td><td></td><td></td><td></td></tr></table>										DATE	SCALE	DRAWING BY	CHECKED BY	PROJECT ENG.						<table><tr><td>DATE</td><td>SCALE</td><td>DRAWING BY</td><td>CHECKED BY</td><td>PROJECT ENG.</td></tr><tr><td></td><td></td><td></td><td></td><td></td></tr></table>										DATE	SCALE	DRAWING BY	CHECKED BY	PROJECT ENG.																																																							
DATE	SCALE	DRAWING BY	CHECKED BY	PROJECT ENG.																																																																																					
DATE	SCALE	DRAWING BY	CHECKED BY	PROJECT ENG.																																																																																					
DRAWING TITLE: TYPICAL INSTALLATION DETAILS & NOTES FOR LIGHTING SYSTEM																																																																																									
NO CONSTRUCTION PERMITTED UNLESS DRAWING APPROVED																																																																																									
APPROVED FOR CONSTRUCTION BY:										DATE:																																																																															
BUDGET REF. LOCATION SITE CLASS										SERIAL NO. SH/ISSF REVISION																																																																															
008-079-0184 P 2 P										707225 10 0187 003																																																																															

NOTES
1- FOR TYPE OF LIGHTING FIXTURE, MOUNTING ELEVATION, etc. SEE RELEVANT LIGHTING LAYOUT DRAWINGS. 2- TO BE WELDED TO STEEL STRUCTURE IN FIELD. 3- FOR INSTALLATION OF CONDUIT SUPPORT, REFER TO SHT. 25. 4- ALL DIMENSIONS ARE IN MILLIMETERS.

LEGEND

REFERENCE DRAWING	DRG. No.
IPS Lighting Installation Details (Category 300)	IPS-D-EL-300

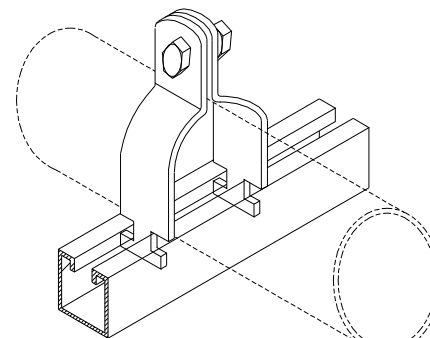
KEY PLAN

اصل و کاپیہ نسخہ این نقشہ و حق القیاسی متعلق بہ شرکت ملی مناطق نفت خیز جنوب مہیشدہ۔
 THE ORIGINAL AND ALL COPIES OF THIS DRAWING TOGETHER WITH
 THE COPYRIGHT THEREIN ARE THE SOLE PROPERTY OF
 N.I.S.O.C./ FIELDS

BINAK OILFIELD DEVELOPMENT GENERAL				
DATE	SCALE	DRAWING BY	CHECKED BY	PROJECT ENG.

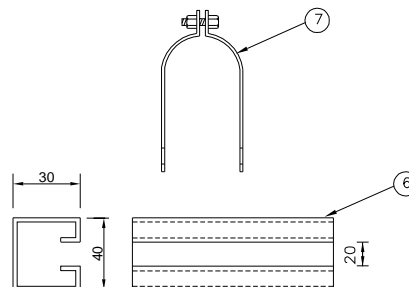
NO CONSTRUCTION PERMITTED UNLESS DRAWING APPROVED									
---	--	--	--	--	--	--	--	--	--





APPROVED FOR CONSTRUCTION					BY:	DATE:
BUDGET REF.	LOCATION	SIZE	CLASS	SERIAL NO.	SHEET	REVISION
088-038-0184	B	2	B	202226	10 OF 30	002



No.	DESCRIPTION	QTY
①	POWER CABLE FOR LIGHTING	1-FA
②	BOLT & NUT WITH 1-SPRING WASHER AND 2-FLAT WASHERS FOR FIXTURE	4-SET
③	FIXTURE SUPPORT([=100x50x6)	1-EA
④	MOUNTING PLATE (200x200x6)	1-EA
⑤	RIGID STEEL CONDUIT 20mm. DIA.	
⑥	UNISTRUT CHANNEL	
⑦	UNISTRUT CLAMP	
⑧	MASONARY ANCHOR	
⑨	BOLT & NUT WITH 1-SPRING WASHER AND 2-FLAT WASHERS FOR BOX	4-SET
⑩	BALLAST BOX SUPPORT([=100x50x6)	1-SET
⑪	SEALING FITTING	3-EA
⑫	UNION COUPLING	1-EA
⑬	SHORT NIPPLE	1-EA

Diagram illustrating the welding of a plate (3) to a beam (4). The plate is welded to the beam using a weld (WELD) and a fixing hole (FIXING HOLE) is shown.



<table><tr><td>D09</td><td>MAR.2023</td><td>PI</td><td>ALHABHA</td><td>WJAHABHA</td><td>WJAHABHA</td><td></td></tr><tr><td>D08</td><td>OCT.2022</td><td>PI</td><td>ALHABHA</td><td>WJAHABHA</td><td>WJAHABHA</td><td>---</td></tr><tr><td>D01</td><td>OCT.2021</td><td>PI</td><td>ALHABHA</td><td>WJAHABHA</td><td>WJAHABHA</td><td></td></tr><tr><td>D00</td><td>AUG.2021</td><td>PI</td><td>ALHABHA</td><td>WJAHABHA</td><td>SHAGHAR</td><td></td></tr><tr><td>REV.</td><td>DATE</td><td>P.O.I.F</td><td>PREP.</td><td>CHK.</td><td>APP.</td><td>AUT.</td></tr></table>							D09	MAR.2023	PI	ALHABHA	WJAHABHA	WJAHABHA		D08	OCT.2022	PI	ALHABHA	WJAHABHA	WJAHABHA	---	D01	OCT.2021	PI	ALHABHA	WJAHABHA	WJAHABHA		D00	AUG.2021	PI	ALHABHA	WJAHABHA	SHAGHAR		REV.	DATE	P.O.I.F	PREP.	CHK.	APP.	AUT.	<table><tr><td>REV.</td><td>DESCRIPTION</td><td>CHECKED</td><td>REV. APPR.</td></tr><tr><td></td><td>و کایه شیوه ای شده و حق انحصاری مکتوب در تارک مع مالکین غیر جنوب می باشد.</td><td></td><td></td></tr></table>							REV.	DESCRIPTION	CHECKED	REV. APPR.		و کایه شیوه ای شده و حق انحصاری مکتوب در تارک مع مالکین غیر جنوب می باشد.		
D09	MAR.2023	PI	ALHABHA	WJAHABHA	WJAHABHA																																																			
D08	OCT.2022	PI	ALHABHA	WJAHABHA	WJAHABHA	---																																																		
D01	OCT.2021	PI	ALHABHA	WJAHABHA	WJAHABHA																																																			
D00	AUG.2021	PI	ALHABHA	WJAHABHA	SHAGHAR																																																			
REV.	DATE	P.O.I.F	PREP.	CHK.	APP.	AUT.																																																		
REV.	DESCRIPTION	CHECKED	REV. APPR.																																																					
	و کایه شیوه ای شده و حق انحصاری مکتوب در تارک مع مالکین غیر جنوب می باشد.																																																							
PROJECT NAME: BIKAK OILFIELD DEVELOPMENT GENERAL							 THE ORIGINAL AND ALL COPIES OF THIS DRAWING TOGETHER WITH THE COPYRIGHT THEREIN ARE THE SOLE PROPERTY OF N.I.O.C./ FIELDS																																																	
PROJECT NO.: 971020							EPC CONTRACTOR: EPD/EPC CONTRACTOR (GC):																																																	
 							 PETROIRAN DEVELOPMENT COMPANY																																																	
BIKRAN ENERGY - DESIGN & INSPECTION COMPANIES																																																								
DATE							SCALE																																																	
DRAWING BY							CHECKED BY																																																	
PROJECT E																																																								
DRAWING TITLE: TYPICAL INSTALLATION DETAILS & NOTES FOR LIGHTING SYSTEM														NO CONSTRUCTION PERMITTED UNLESS DRAWING APPROVED																																										
<table><tr><td>REALIS</td><td>SERIS</td><td colspan="2">DRAWING NO.</td><td>SHEET NO.</td><td>REV.</td></tr><tr><td>N.T.S</td><td>A5</td><td colspan="2">GN-BKRAL-PIEDCO-000-EL-DW-0003</td><td>20 OF 90</td><td>003</td></tr></table>														REALIS	SERIS	DRAWING NO.		SHEET NO.	REV.	N.T.S	A5	GN-BKRAL-PIEDCO-000-EL-DW-0003		20 OF 90	003	<table><tr><td colspan="3">APPROVED FOR CONSTRUCTION</td><td>BY:</td><td>DATE:</td></tr><tr><td>BUDGET REF.</td><td>LOCATION</td><td>SIZE CLASS</td><td>SERIAL NO.</td><td>SHEET</td><td>REVISED</td></tr><tr><td>003-075-9184</td><td>F</td><td>P</td><td>707225</td><td>20 OF 90</td><td>003</td></tr></table>														APPROVED FOR CONSTRUCTION			BY:	DATE:	BUDGET REF.	LOCATION	SIZE CLASS	SERIAL NO.	SHEET	REVISED	003-075-9184	F	P	707225	20 OF 90	003
REALIS	SERIS	DRAWING NO.		SHEET NO.	REV.																																																			
N.T.S	A5	GN-BKRAL-PIEDCO-000-EL-DW-0003		20 OF 90	003																																																			
APPROVED FOR CONSTRUCTION			BY:	DATE:																																																				
BUDGET REF.	LOCATION	SIZE CLASS	SERIAL NO.	SHEET	REVISED																																																			
003-075-9184	F	P	707225	20 OF 90	003																																																			

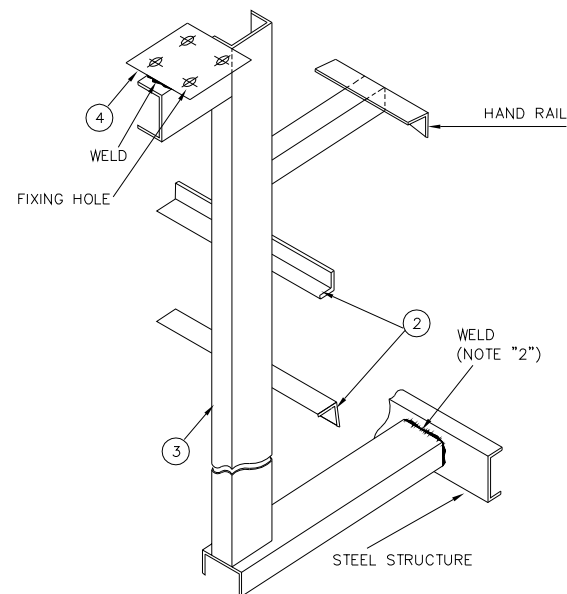
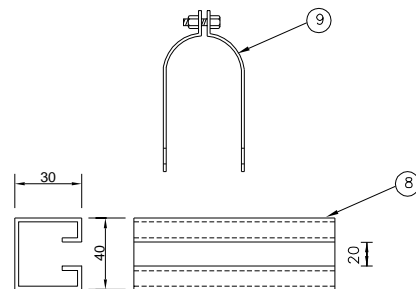
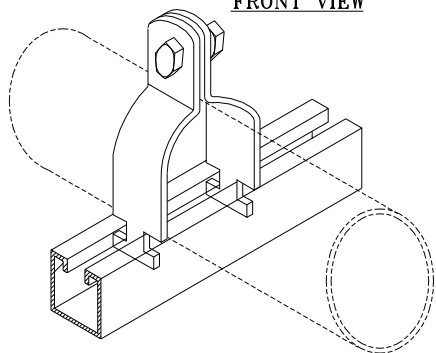
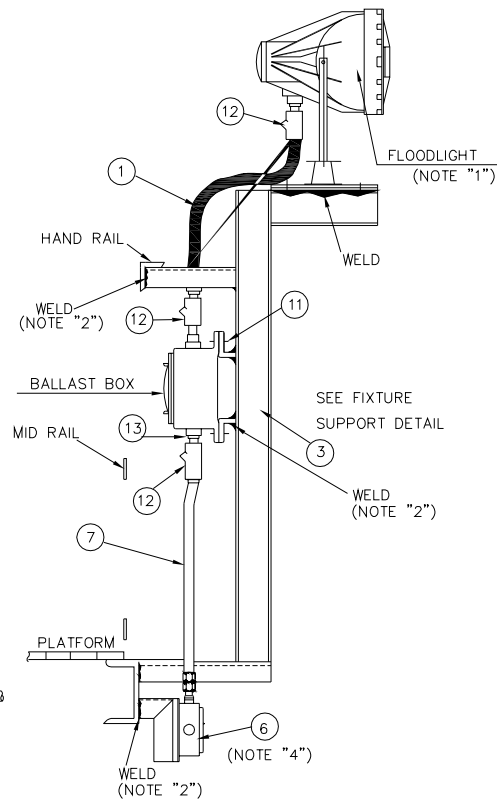
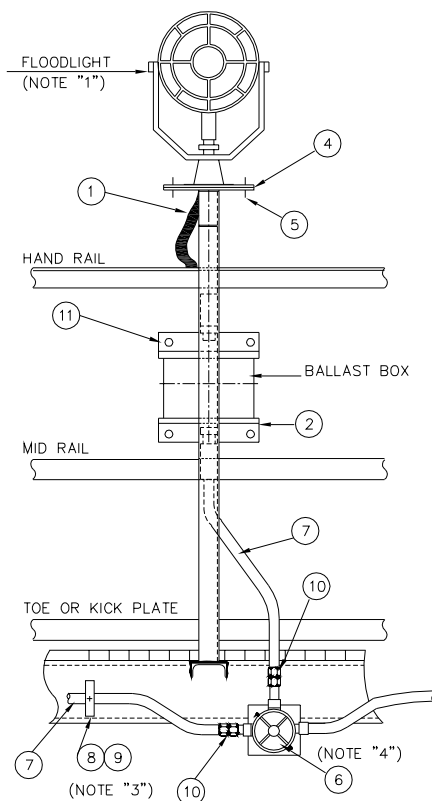
NOTES
1- FOR TYPE OF LIGHTING FIXTURE, MOUNTING ELEVATION, etc. SEE RELEVANT LIGHTING LAYOUT DRAWINGS.
2- TO BE WELDED TO STEEL STRUCTURE IN FIELD.
3- FOR INSTALLATION OF CONDUIT SUPPORT, REFER TO SHT. 25.
4- ALL DIMENSIONS ARE IN MILLIMETERS.

LEGEND

REFERENCE DRAWING	DRG. No.
IPS Lighting Installation Details (Category 300)	IPS-D-EL-300

KEY PLAN

FLOODLIGHTING FIXTURE
(MOUNTED ON CONCRETE STRUCTURE)






No.	DESCRIPTION	QTY.
①	POWER CABLE FOR LIGHTING	1-EA
②	BALLAST BOX SUPPORT(L=50x50x6)	2-EA
③	FIXTURE SUPPORT(L=100x50x6)	1-SET
④	MOUNTING PLATE (200x200x6)	1-EA
⑤	BOLT & NUT WITH 1-SPRING WASHER AND 2-FLAT WASHERS FOR FIXTURE	4-SETS
⑥	JUNCTION BOX	
⑦	RIGID STEEL CONDUIT 20mm. DIA.	
⑧	UNISTRUT CHANNEL	
⑨	UNISTRUT CLAMP	
⑩	UNION COUPLING	2-EA
⑪	BOLT & NUT WITH 1-SPRING WASHER AND 2-FLAT WASHERS FOR BOX	4-SETS
⑫	SEALING FITTING	3-EA
⑬	SHORT NIPPLE	1-EA

NOTES
1- FOR TYPE OF LIGHTING FIXTURE, MOUNTING ELEVATION, etc. SEE RELEVANT LIGHTING LAYOUT DRAWINGS. 2- TO BE WELDED TO STEEL STRUCTURE IN FIELD. 3- FOR INSTALLATION OF CONDUIT SUPPORT, REFER TO SHT. 25. 4- FOR INSTALLATION OF JUNCTION BOX, REFER TO SHT. 26. 5- ALL DIMENSIONS ARE IN MILLIMETERS.

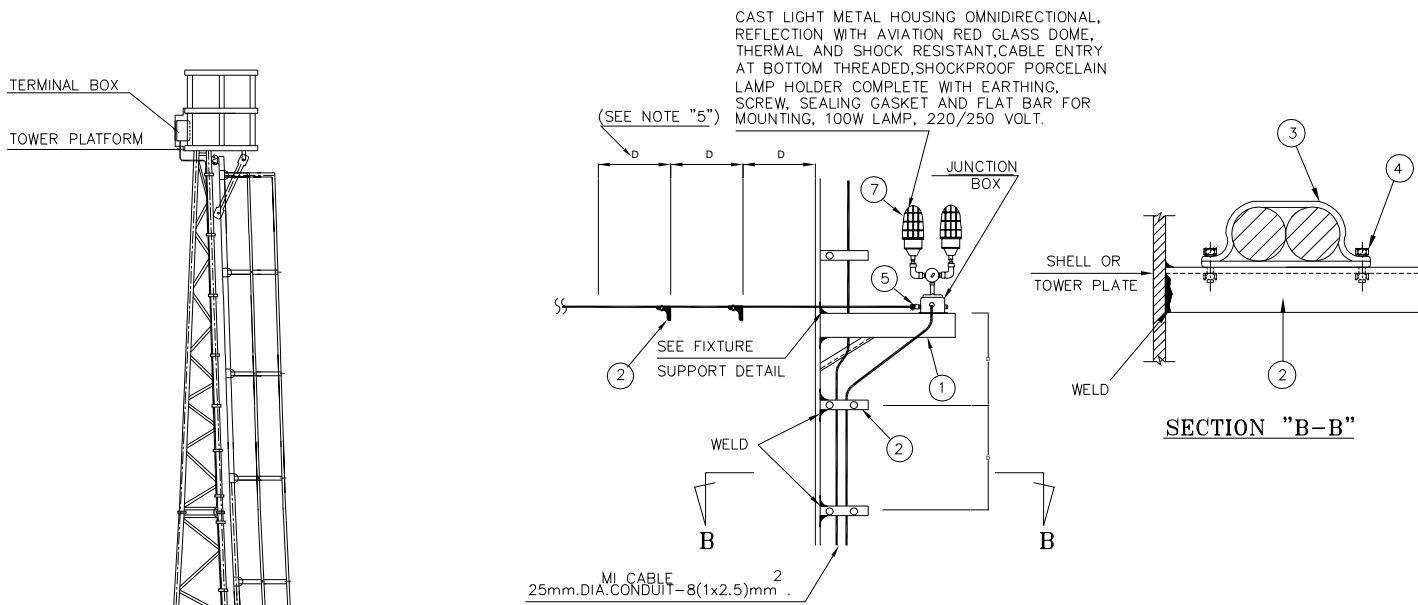
LEGEND	
--------	--

REFERENCE DRAWING	DRG. No.
IPS Lighting Installation Details (Category 300)	IPS-D-EL-300

KEY PLAN

<table><tr><td>D05</td><td>MAR.2023</td><td>PI</td><td>ALMAGHAM</td><td>ALFARHANI</td><td>ALWADHANI</td><td></td><td></td><td></td><td></td></tr><tr><td>D02</td><td>OCT.2022</td><td>PI</td><td>ALMAGHAM</td><td>ALFARHANI</td><td>ALWADHANI</td><td></td><td></td><td></td><td></td></tr><tr><td>D01</td><td>OCT.2021</td><td>PI</td><td>ALMAGHAM</td><td>ALFARHANI</td><td>ALWADHANI</td><td></td><td></td><td></td><td></td></tr><tr><td>D00</td><td>AUG.2021</td><td>PI</td><td>ALMAGHAM</td><td>ALFARHANI</td><td>ALWADHANI</td><td></td><td></td><td></td><td></td></tr><tr><td>REV.</td><td>DATE</td><td>P.O.I.#</td><td>PREP.</td><td>CHK.</td><td>APP.</td><td>AUT.</td><td colspan="3"></td><td></td></tr></table>										D05	MAR.2023	PI	ALMAGHAM	ALFARHANI	ALWADHANI					D02	OCT.2022	PI	ALMAGHAM	ALFARHANI	ALWADHANI					D01	OCT.2021	PI	ALMAGHAM	ALFARHANI	ALWADHANI					D00	AUG.2021	PI	ALMAGHAM	ALFARHANI	ALWADHANI					REV.	DATE	P.O.I.#	PREP.	CHK.	APP.	AUT.					<table><tr><td colspan="2"></td><td colspan="2">*****</td><td>BY</td><td>DATE</td><td>BY</td><td>DATE</td><td>BY</td><td>DATE</td></tr><tr><td colspan="2">REV.</td><td colspan="2">DESCRIPTION</td><td>BY</td><td>DATE</td><td>BY</td><td>DATE</td><td>BY</td><td>DATE</td></tr><tr><td colspan="2"></td><td colspan="2">CHECKED</td><td colspan="2">REV. APPR.</td><td colspan="4"></td></tr></table>												*****		BY	DATE	BY	DATE	BY	DATE	REV.		DESCRIPTION		BY	DATE	BY	DATE	BY	DATE			CHECKED		REV. APPR.					
D05	MAR.2023	PI	ALMAGHAM	ALFARHANI	ALWADHANI																																																																																															
D02	OCT.2022	PI	ALMAGHAM	ALFARHANI	ALWADHANI																																																																																															
D01	OCT.2021	PI	ALMAGHAM	ALFARHANI	ALWADHANI																																																																																															
D00	AUG.2021	PI	ALMAGHAM	ALFARHANI	ALWADHANI																																																																																															
REV.	DATE	P.O.I.#	PREP.	CHK.	APP.	AUT.																																																																																														
		*****		BY	DATE	BY	DATE	BY	DATE																																																																																											
REV.		DESCRIPTION		BY	DATE	BY	DATE	BY	DATE																																																																																											
		CHECKED		REV. APPR.																																																																																																
PROJECT NAME: BINKAN OILFIELD DEVELOPMENT GENERAL										<div></div> <div>THE ORIGINAL AND ALL COPIES OF THIS DRAWING TOGETHER WITH THE COPYRIGHT THEREON ARE THE SOLE PROPERTY OF N.I.S.O.C. / FIELDS</div>																																																																																										
PROJECT NO.: 971020										BINKAN OILFIELD DEVELOPMENT GENERAL																																																																																										
EPC CONTRACTOR: <div>HIRGAN ENERGY - DESIGN & INSPECTION COMPANIES</div>										EPD/EPC CONTRACTOR (GC): <div>PETROIRAN DEVELOPMENT COMPANY</div>																																																																																										
DATE										SCALE																																																																																										
DRAWING										DRAWING BY																																																																																										
TYPICAL INSTALLATION DETAILS & NOTES FOR LIGHTING SYSTEM										NO CONSTRUCTION PERMITTED UNLESS DRAWING APPROVED																																																																																										
TYPICAL INSTALLATION DETAILS & NOTES FOR LIGHTING SYSTEM										APPROVED FOR CONSTRUCTION BY: DATE:																																																																																										
RECALLS SHEET NO.										REVISION																																																																																										
N.O.S AS BK-CHNAL-PEDCO-000-BL-DW-0005										21 OF 09 D03																																																																																										
08-078-RIFA										707225																																																																																										
21 OF 09 D03										003																																																																																										

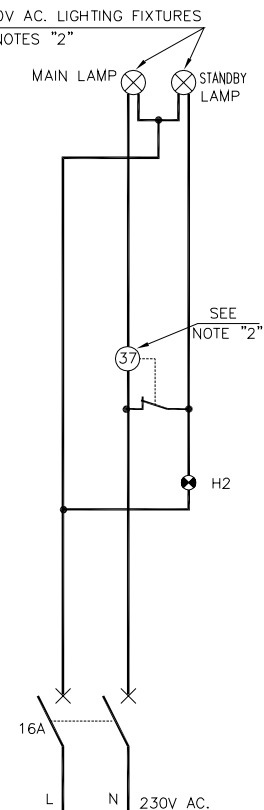
APPROVED FOR CONSTRUCTION					BY:	DATE:	
	BUDGET REF.	LOCATION	SIZE	CLASS	SERIAL NO.	SHEET	REVISION



MI CABLE
25mm.DIA.CONDUIT-8(1x2.5)mm²



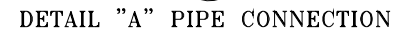
D08	MAR.2023	F1	KHABABA	EJAFKAGHAN	KHJSHANAD																																																																																																																																																																																																																																																																																																																																																																																																																																																																																																																																																																																																																																																																																																																																																																																																																																																																																																																																																																																																																																																																																																																																																																																																																																																																																																																																																																																																												
-----	----------	----	---------	------------	-----------	--	--	--	--	--	--	--	--	--	--	--	--	--	--	--	--	--	--	--	--	--	--	--	--	--	--	--	--	--	--	--	--	--	--	--	--	--	--	--	--	--	--	--	--	--	--	--	--	--	--	--	--	--	--	--	--	--	--	--	--	--	--	--	--	--	--	--	--	--	--	--	--	--	--	--	--	--	--	--	--	--	--	--	--	--	--	--	--	--	--	--	--	--	--	--	--	--	--	--	--	--	--	--	--	--	--	--	--	--	--	--	--	--	--	--	--	--	--	--	--	--	--	--	--	--	--	--	--	--	--	--	--	--	--	--	--	--	--	--	--	--	--	--	--	--	--	--	--	--	--	--	--	--	--	--	--	--	--	--	--	--	--	--	--	--	--	--	--	--	--	--	--	--	--	--	--	--	--	--	--	--	--	--	--	--	--	--	--	--	--	--	--	--	--	--	--	--	--	--	--	--	--	--	--	--	--	--	--	--	--	--	--	--	--	--	--	--	--	--	--	--	--	--	--	--	--	--	--	--	--	--	--	--	--	--	--	--	--	--	--	--	--	--	--	--	--	--	--	--	--	--	--	--	--	--	--	--	--	--	--	--	--	--	--	--	--	--	--	--	--	--	--	--	--	--	--	--	--	--	--	--	--	--	--	--	--	--	--	--	--	--	--	--	--	--	--	--	--	--	--	--	--	--	--	--	--	--	--	--	--	--	--	--	--	--	--	--	--	--	--	--	--	--	--	--	--	--	--	--	--	--	--	--	--	--	--	--	--	--	--	--	--	--	--	--	--	--	--	--	--	--	--	--	--	--	--	--	--	--	--	--	--	--	--	--	--	--	--	--	--	--	--	--	--	--	--	--	--	--	--	--	--	--	--	--	--	--	--	--	--	--	--	--	--	--	--	--	--	--	--	--	--	--	--	--	--	--	--	--	--	--	--	--	--	--	--	--	--	--	--	--	--	--	--	--	--	--	--	--	--	--	--	--	--	--	--	--	--	--	--	--	--	--	--	--	--	--	--	--	--	--	--	--	--	--	--	--	--	--	--	--	--	--	--	--	--	--	--	--	--	--	--	--	--	--	--	--	--	--	--	--	--	--	--	--	--	--	--	--	--	--	--	--	--	--	--	--	--	--	--	--	--	--	--	--	--	--	--	--	--	--	--	--	--	--	--	--	--	--	--	--	--	--	--	--	--	--	--	--	--	--	--	--	--	--	--	--	--	--	--	--	--	--	--	--	--	--	--	--	--	--	--	--	--	--	--	--	--	--	--	--	--	--	--	--	--	--	--	--	--	--	--	--	--	--	--	--	--	--	--	--	--	--	--	--	--	--	--	--	--	--	--	--	--	--	--	--	--	--	--	--	--	--	--	--	--	--	--	--	--	--	--	--	--	--	--	--	--	--	--	--	--	--	--	--	--	--	--	--	--	--	--	--	--	--	--	--	--	--	--	--	--	--	--	--	--	--	--	--	--	--	--	--	--	--	--	--	--	--	--	--	--	--	--	--	--	--	--	--	--	--	--	--	--	--	--	--	--	--	--	--	--	--	--	--	--	--	--	--	--	--	--	--	--	--	--	--	--	--	--	--	--	--	--	--	--	--	--	--	--	--	--	--	--	--	--	--	--	--	--	--	--	--	--	--	--	--	--	--	--	--	--	--	--	--	--	--	--	--	--	--	--	--	--	--	--	--	--	--	--	--	--	--	--	--	--	--	--	--	--	--	--	--	--	--	--	--	--	--	--	--	--	--	--	--	--	--	--	--	--	--	--	--	--	--	--	--	--	--	--	--	--	--	--	--	--	--	--	--	--	--	--	--	--	--	--	--	--	--	--	--	--	--	--	--	--	--	--	--	--	--	--	--	--	--	--	--	--	--	--	--	--	--	--	--	--	--	--	--	--	--	--	--	--	--	--	--	--	--	--	--	--	--	--	--	--	--	--	--	--	--	--	--	--	--	--	--	--	--	--	--	--	--	--	--	--	--	--	--	--	--	--	--	--	--	--	--	--	--	--	--	--	--	--	--	--	--	--	--	--	--	--	--	--	--	--	--	--	--	--	--	--	--	--	--	--	--	--	--	--	--	--	--	--	--	--	--	--	--	--	--	--	--	--	--	--	--	--	--	--	--	--	--	--	--	--	--	--	--	--	--	--	--	--	--	--	--	--	--	--	--	--	--	--	--	--	--	--	--	--	--	--	--	--	--	--	--	--	--	--	--	--	--	--	--	--	--	--	--	--	--	--	--	--	--	--	--	--	--	--	--	--	--	--	--	--	--	--	--	--	--	--	--	--	--	--	--	--	--	--	--	--	--	--	--	--	--	--	--	--	--	--	--	--	--	--	--	--	--	--	--	--	--	--	--	--	--	--	--	--	--	--	--	--	--	--	--	--	--	--	--	--	--	--	--	--	--	--	--	--	--	--	--	--	--	--	--	--	--	--	--	--	--	--	--	--	--	--	--	--	--	--	--	--	--	--	--	--	--	--	--	--	--	--	--	--	--	--	--	--	--	--	--	--	--	--	--	--	--	--	--	--	--	--	--	--	--	--	--	--	--	--	--	--	--	--	--	--	--	--	--	--	--	--	--	--	--	--	--	--	--	--	--	--	--	--	--	--	--	--	--	--	--	--	--	--	--	--	--	--	--	--	--	--	--	--	--	--	--	--	--	--	--	--	--	--	--	--	--	--	--	--	--	--	--	--	--	--	--	--	--	--	--	--	--	--	--	--	--	--	--	--	--	--	--	--	--	--	--	--	--	--	--	--	--	--	--	--	--	--	--	--	--	--	--	--	--	--	--	--	--	--	--	--	--	--	--	--	--	--	--	--	--	--	--	--	--	--	--	--	--	--	--	--	--	--	--	--	--	--	--	--	--	--	--	--	--	--	--	--	--	--	--	--	--	--	--	--	--	--	--	--	--	--	--	--	--	--	--	--	--	--	--	--	--	--	--	--	--	--	--	--	--	--	--	--	--	--	--	--	--	--	--	--	--	--	--	--	--	--	--	--	--	--	--	--	--	--	--	--	--	--	--	--	--	--	--	--	--	--	--	--	--	--	--	--

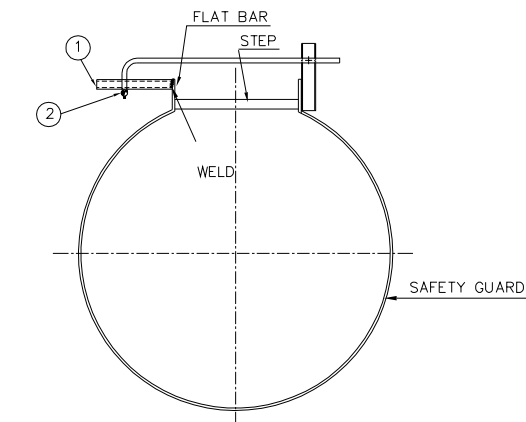


AIRCRAFT WARNING LIGHT (TYPICAL PANEL)

- ### KEY PLAN

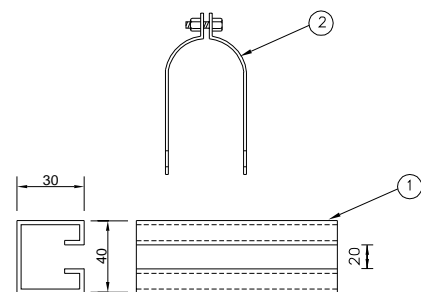
D09	MAR.2003	P7	NABASNA	E.F.HAGHANI	K.MOHSENLOO																																																																																																																																																																																																																																																																																																																																																																																																																																																																																																																																																																																																																																																																																																																																																																																																																																																																																																																																																																																																																																																																																																																																																																																																																																																																																																																																																																																																												
-----	----------	----	---------	-------------	-------------	--	--	--	--	--	--	--	--	--	--	--	--	--	--	--	--	--	--	--	--	--	--	--	--	--	--	--	--	--	--	--	--	--	--	--	--	--	--	--	--	--	--	--	--	--	--	--	--	--	--	--	--	--	--	--	--	--	--	--	--	--	--	--	--	--	--	--	--	--	--	--	--	--	--	--	--	--	--	--	--	--	--	--	--	--	--	--	--	--	--	--	--	--	--	--	--	--	--	--	--	--	--	--	--	--	--	--	--	--	--	--	--	--	--	--	--	--	--	--	--	--	--	--	--	--	--	--	--	--	--	--	--	--	--	--	--	--	--	--	--	--	--	--	--	--	--	--	--	--	--	--	--	--	--	--	--	--	--	--	--	--	--	--	--	--	--	--	--	--	--	--	--	--	--	--	--	--	--	--	--	--	--	--	--	--	--	--	--	--	--	--	--	--	--	--	--	--	--	--	--	--	--	--	--	--	--	--	--	--	--	--	--	--	--	--	--	--	--	--	--	--	--	--	--	--	--	--	--	--	--	--	--	--	--	--	--	--	--	--	--	--	--	--	--	--	--	--	--	--	--	--	--	--	--	--	--	--	--	--	--	--	--	--	--	--	--	--	--	--	--	--	--	--	--	--	--	--	--	--	--	--	--	--	--	--	--	--	--	--	--	--	--	--	--	--	--	--	--	--	--	--	--	--	--	--	--	--	--	--	--	--	--	--	--	--	--	--	--	--	--	--	--	--	--	--	--	--	--	--	--	--	--	--	--	--	--	--	--	--	--	--	--	--	--	--	--	--	--	--	--	--	--	--	--	--	--	--	--	--	--	--	--	--	--	--	--	--	--	--	--	--	--	--	--	--	--	--	--	--	--	--	--	--	--	--	--	--	--	--	--	--	--	--	--	--	--	--	--	--	--	--	--	--	--	--	--	--	--	--	--	--	--	--	--	--	--	--	--	--	--	--	--	--	--	--	--	--	--	--	--	--	--	--	--	--	--	--	--	--	--	--	--	--	--	--	--	--	--	--	--	--	--	--	--	--	--	--	--	--	--	--	--	--	--	--	--	--	--	--	--	--	--	--	--	--	--	--	--	--	--	--	--	--	--	--	--	--	--	--	--	--	--	--	--	--	--	--	--	--	--	--	--	--	--	--	--	--	--	--	--	--	--	--	--	--	--	--	--	--	--	--	--	--	--	--	--	--	--	--	--	--	--	--	--	--	--	--	--	--	--	--	--	--	--	--	--	--	--	--	--	--	--	--	--	--	--	--	--	--	--	--	--	--	--	--	--	--	--	--	--	--	--	--	--	--	--	--	--	--	--	--	--	--	--	--	--	--	--	--	--	--	--	--	--	--	--	--	--	--	--	--	--	--	--	--	--	--	--	--	--	--	--	--	--	--	--	--	--	--	--	--	--	--	--	--	--	--	--	--	--	--	--	--	--	--	--	--	--	--	--	--	--	--	--	--	--	--	--	--	--	--	--	--	--	--	--	--	--	--	--	--	--	--	--	--	--	--	--	--	--	--	--	--	--	--	--	--	--	--	--	--	--	--	--	--	--	--	--	--	--	--	--	--	--	--	--	--	--	--	--	--	--	--	--	--	--	--	--	--	--	--	--	--	--	--	--	--	--	--	--	--	--	--	--	--	--	--	--	--	--	--	--	--	--	--	--	--	--	--	--	--	--	--	--	--	--	--	--	--	--	--	--	--	--	--	--	--	--	--	--	--	--	--	--	--	--	--	--	--	--	--	--	--	--	--	--	--	--	--	--	--	--	--	--	--	--	--	--	--	--	--	--	--	--	--	--	--	--	--	--	--	--	--	--	--	--	--	--	--	--	--	--	--	--	--	--	--	--	--	--	--	--	--	--	--	--	--	--	--	--	--	--	--	--	--	--	--	--	--	--	--	--	--	--	--	--	--	--	--	--	--	--	--	--	--	--	--	--	--	--	--	--	--	--	--	--	--	--	--	--	--	--	--	--	--	--	--	--	--	--	--	--	--	--	--	--	--	--	--	--	--	--	--	--	--	--	--	--	--	--	--	--	--	--	--	--	--	--	--	--	--	--	--	--	--	--	--	--	--	--	--	--	--	--	--	--	--	--	--	--	--	--	--	--	--	--	--	--	--	--	--	--	--	--	--	--	--	--	--	--	--	--	--	--	--	--	--	--	--	--	--	--	--	--	--	--	--	--	--	--	--	--	--	--	--	--	--	--	--	--	--	--	--	--	--	--	--	--	--	--	--	--	--	--	--	--	--	--	--	--	--	--	--	--	--	--	--	--	--	--	--	--	--	--	--	--	--	--	--	--	--	--	--	--	--	--	--	--	--	--	--	--	--	--	--	--	--	--	--	--	--	--	--	--	--	--	--	--	--	--	--	--	--	--	--	--	--	--	--	--	--	--	--	--	--	--	--	--	--	--	--	--	--	--	--	--	--	--	--	--	--	--	--	--	--	--	--	--	--	--	--	--	--	--	--	--	--	--	--	--	--	--	--	--	--	--	--	--	--	--	--	--	--	--	--	--	--	--	--	--	--	--	--	--	--	--	--	--	--	--	--	--	--	--	--	--	--	--	--	--	--	--	--	--	--	--	--	--	--	--	--	--	--	--	--	--	--	--	--	--	--	--	--	--	--	--	--	--	--	--	--	--	--	--	--	--	--	--	--	--	--	--	--	--	--	--	--	--	--	--	--	--	--	--	--	--	--	--	--	--	--	--	--	--	--	--	--	--	--	--	--	--	--	--	--	--	--	--	--	--	--	--	--	--	--	--	--	--	--	--	--	--	--	--	--	--	--	--	--	--	--	--	--	--	--	--	--	--	--	--	--	--	--	--	--	--	--	--	--	--	--	--	--	--	--	--	--	--	--	--	--	--	--	--	--	--	--	--	--	--	--	--	--	--	--	--	--	--	--	--	--	--	--	--	--	--	--	--	--	--	--	--	--	--	--	--	--	--	--	--	--	--	--	--	--	--	--	--	--	--	--	--	--	--	--	--	--	--	--	--	--	--	--	--	--	--	--	--	--	--	--	--	--	--	--	--	--	--	--	--	--	--	--	--	--	--

[illegible]

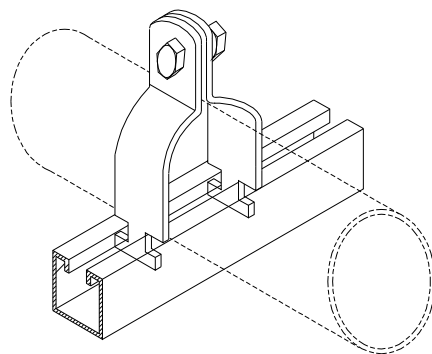


SECTION "A-A"

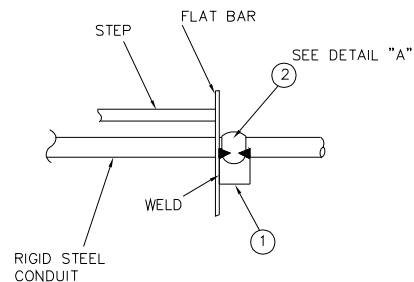
CONDUIT SUPPORT
(FIXED ON LADDER)



DETAIL "A"

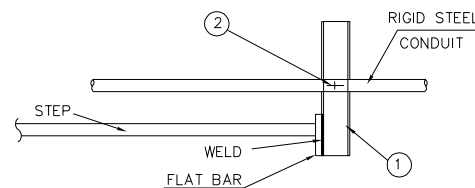


ISOMETRIC VIEW OF
UNISTRUT CHANNEL & CLAMP



DETAIL "B"

FRONT VIEW



DETAIL "B"
TOP VIEW

No.	DESCRIPTION	QTY
①	UNISTRUT CHANNEL	
②	UNISTRUT CLAMP	

[illegible]

TYPE "B"

**MOUNTED ON
CONCRETE BEAM**

WELD(NOTE "2")

3

1

JUNCTION BOX

2

JUNCTION BOX

WELD

SEE DETAIL "A"

5

6

2

1

4

Diagram illustrating the Type "C" Junction Box mounted on a platform beam. The diagram shows the junction box (1) connected to a conduit (2) and a platform beam (3). The junction box is labeled "JUNCTION BOX" and the platform beam is labeled "PLATFORM". A weld is indicated by the label "WELD (NOTE '2'))".

TYPE "D"

MOUNTED ON STEEL BEAM

WELD

5

6

JUNCTION BOX

POWER CABLE

5

6

JUNCTION BOX

4

5

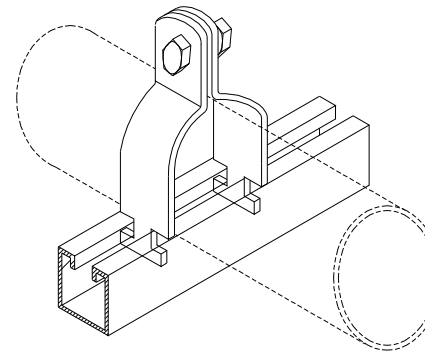
6

SEE DETAIL "A"

MAX. 300





MAX. 300

STEEL BEAM



Technical drawing of a mechanical part. The drawing includes a side view (left) and a top view (right). The side view shows a U-shaped profile with a width of 30 and a height of 40. The top view shows a rectangular plate with a width of 20. A callout '6' points to a bolt on the top view. A callout '7' points to a hole on the side view.

No.	DESCRIPTION	QTY.
①	MOUNTING PLATE	
②	BOLT AND NUT WITH 1-SPRING WASHER & 1-FLAT WASHER, FOR JUNCTION BOX	
③	STEEL ANGLE(L-50x50x6)	
④	UNION COUPLING	
⑤	UNISTRUT CHANNEL	
⑥	UNISTRUT CLAMP	

<table><tr><td>D03</td><td>MAR.2023</td><td>PI</td><td>ELABORATE</td><td>ELABORATE</td><td>ELABORATE</td><td></td><td></td><td></td><td></td></tr><tr><td>D02</td><td>OCT.2022</td><td>PI</td><td>ELABORATE</td><td>ELABORATE</td><td>ELABORATE</td><td></td><td></td><td></td><td></td></tr><tr><td>D01</td><td>OCT.2021</td><td>PI</td><td>ELABORATE</td><td>ELABORATE</td><td>ELABORATE</td><td></td><td></td><td></td><td></td></tr><tr><td>D00</td><td>AUG.2021</td><td>PI</td><td>ELABORATE</td><td>ELABORATE</td><td>ELABORATE</td><td></td><td></td><td></td><td></td></tr><tr><td>REV.</td><td>DATE</td><td>P.O.I.F</td><td>PREP.</td><td>CHK.</td><td>APP.</td><td>AUT.</td><td></td><td></td><td></td></tr></table>						D03	MAR.2023	PI	ELABORATE	ELABORATE	ELABORATE					D02	OCT.2022	PI	ELABORATE	ELABORATE	ELABORATE					D01	OCT.2021	PI	ELABORATE	ELABORATE	ELABORATE					D00	AUG.2021	PI	ELABORATE	ELABORATE	ELABORATE					REV.	DATE	P.O.I.F	PREP.	CHK.	APP.	AUT.				<table><tr><td>REV.</td><td>DESCRIPTION</td><td>CHECKED</td><td>REV. APPR.</td></tr><tr><td></td><td></td><td></td><td></td></tr></table>						REV.	DESCRIPTION	CHECKED	REV. APPR.					<p>امثل و كليه نسخ ان نقشه و كذا حق القايير مخصوصه بدارين ميهداد.</p> <p>THE ORIGINAL AND ALL COPIES OF THIS DRAWING TOGETHER WITH THE COPYRIGHT THEREON ARE THE SOLE PROPERTY OF N.I.S.O.C. / FIELDS</p>							
D03	MAR.2023	PI	ELABORATE	ELABORATE	ELABORATE																																																																								
D02	OCT.2022	PI	ELABORATE	ELABORATE	ELABORATE																																																																								
D01	OCT.2021	PI	ELABORATE	ELABORATE	ELABORATE																																																																								
D00	AUG.2021	PI	ELABORATE	ELABORATE	ELABORATE																																																																								
REV.	DATE	P.O.I.F	PREP.	CHK.	APP.	AUT.																																																																							
REV.	DESCRIPTION	CHECKED	REV. APPR.																																																																										
PROJECT NAME: BINAK OILFIELD DEVELOPMENT GENERAL										 BINAK OILFIELD DEVELOPMENT GENERAL																																																																			
PROJECT NO.: 971020																																																																													
EPC CONTRACTOR:										EPD/EPC CONTRACTOR (GC):																																																																			
 										 PETROIRAN DEVELOPMENT COMPANY																																																																			
HIRGAN ENERGY - DESIGN & INSPECTION COMPANIES										PIDCO																																																																			
										BINAK OILFIELD DEVELOPMENT GENERAL																																																																			
DRAWING TITLE:										NO CONSTRUCTION PERMITTED UNLESS DRAWING APPROVED																																																																			
TYPICAL INSTALLATION DETAILS & NOTES FOR LIGHTING SYSTEM										APPROVED FOR CONSTRUCTION BY: SERIAL NO.: DATE:																																																																			
<table><tr><td>SCALE</td><td>9/22</td><td colspan="2">DRAWING NO.</td><td colspan="2">SHEET NO.</td><td>REV.</td><td>BUDGET REF.</td><td>LOCATION</td><td>SIZE</td><td>CLASS</td><td>SERIAL NO.</td><td>CHG/REV</td><td>REVISION</td></tr><tr><td>N.T.S</td><td>A3</td><td colspan="2">BK - GENRA - PIDCO - 000 - EL - DW - 0003</td><td colspan="2">28 OF 09</td><td>003</td><td>008-072-9184</td><td>P</td><td>2</td><td>P</td><td>707225</td><td>28 OF 03</td><td>003</td></tr></table>										SCALE	9/22	DRAWING NO.		SHEET NO.		REV.	BUDGET REF.	LOCATION	SIZE	CLASS	SERIAL NO.	CHG/REV	REVISION	N.T.S	A3	BK - GENRA - PIDCO - 000 - EL - DW - 0003		28 OF 09		003	008-072-9184	P	2	P	707225	28 OF 03	003	<table><tr><td>DATE</td><td>SCALE</td><td>DRAWING BY</td><td>CHECKED BY</td><td>PROJECT ENG.</td></tr><tr><td></td><td></td><td></td><td></td><td></td></tr></table>										DATE	SCALE	DRAWING BY	CHECKED BY	PROJECT ENG.																									
SCALE	9/22	DRAWING NO.		SHEET NO.		REV.	BUDGET REF.	LOCATION	SIZE	CLASS	SERIAL NO.	CHG/REV	REVISION																																																																
N.T.S	A3	BK - GENRA - PIDCO - 000 - EL - DW - 0003		28 OF 09		003	008-072-9184	P	2	P	707225	28 OF 03	003																																																																
DATE	SCALE	DRAWING BY	CHECKED BY	PROJECT ENG.																																																																									

NOTES
1- FOR JUNCTION BOX LOCATION, TYPE, etc. SEE RELEVANT LIGHTING LAYOUT DRAWINGS.
2- TO BE WELDED TO STEEL STRUCTURE AT FIELD OR BOLTED WITH MASONRY ANCHOR.
3- ALL DIMENSIONS ARE IN MILLIMETERS.

LEGEND

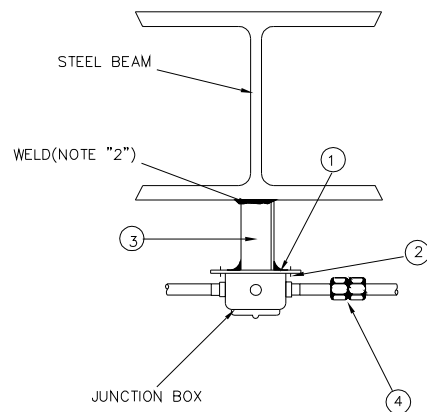
REFERENCE DRAWING	DRG. No.
IPS Lighting Installation Details (Category 300)	IPS-D-EL-300

KEY PLAN

JUNCTION BOX INSTALLATION

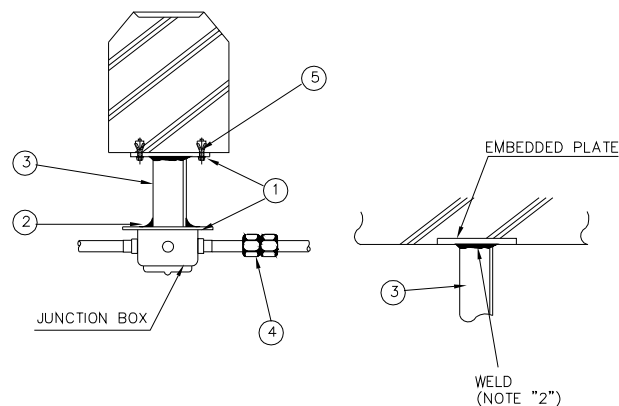
TYPE "E"

MOUNTED ON
STEEL BEAM



TYPE "F"

**MOUNTED ON
CONCRETE**

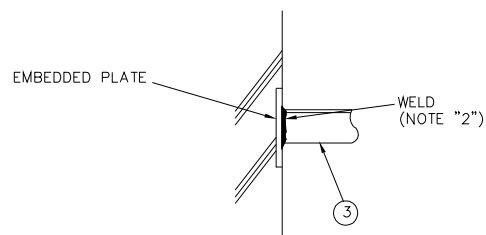
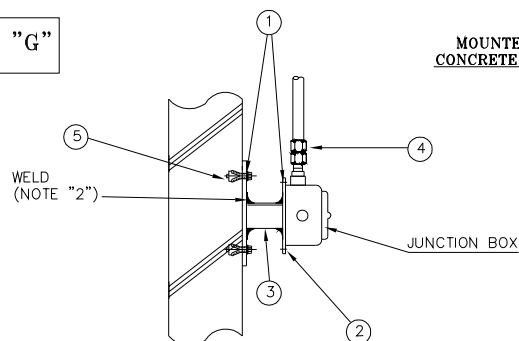


NOTES

- 1- FOR JUNCTION BOX LOCATION, TYPE, etc.
SEE RELEVANT LIGHTING, LAYOUT DRAWINGS.
- 2- TO BE WELDED TO STEEL STRUCTURE AT FIELD
OR BOLTED WITH MASONRY ANCHOR.
- 3- ALL DIMENSIONS ARE IN MILLIMETER.




TYPE "G"

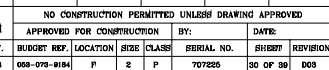
MOUNTED ON
CONCRETE COLUMN

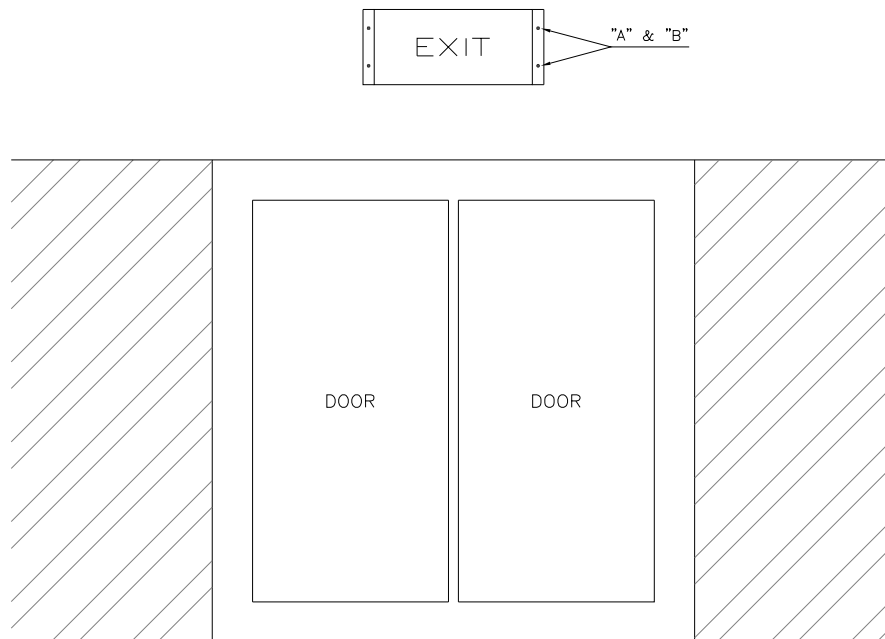


JUNCTION BOX INSTALLATION

No.	DESCRIPTION	QTY
	TYPE "E"	
①	MOUNTING PLATE	
②	BOLT AND NUT WITH 1-SPRING WASHER & 1-FLAT WASHER. FOR JUNCTION BOX	
③	STEEL ANGLE(L-50x50x5)	
④	UNION COUPLING	
⑤	MASONRY ANCHOR	




<table><tr><td>D09</td><td>MAR.2023</td><td>PI</td><td>K.HAFSAH</td><td>M.HAFSAH</td><td>M.HAFSAH</td></tr><tr><td>D08</td><td>OCT.2022</td><td>PI</td><td>K.HAFSAH</td><td>M.HAFSAH</td><td>M.HAFSAH</td></tr><tr><td>D01</td><td>OCT.2021</td><td>PI</td><td>K.HAFSAH</td><td>M.HAFSAH</td><td>M.HAFSAH</td></tr><tr><td>D00</td><td>AUG.2021</td><td>PI</td><td>M.HAFSAH</td><td>M.HAFSAH</td><td>S.HAFSAH</td></tr><tr><td>REV.</td><td>DATE</td><td>P.O.I.#</td><td>PREP.</td><td>CHK.</td><td>APP.</td></tr></table>						D09	MAR.2023	PI	K.HAFSAH	M.HAFSAH	M.HAFSAH	D08	OCT.2022	PI	K.HAFSAH	M.HAFSAH	M.HAFSAH	D01	OCT.2021	PI	K.HAFSAH	M.HAFSAH	M.HAFSAH	D00	AUG.2021	PI	M.HAFSAH	M.HAFSAH	S.HAFSAH	REV.	DATE	P.O.I.#	PREP.	CHK.	APP.	<table><tr><td>REV.</td><td>DESCRIPTION</td><td>CHECKED</td><td>REV. APPR.</td></tr><tr><td>***</td><td>*****</td><td>REV. BY</td><td>DATE</td></tr><tr><td colspan="4">كليه ايمز هندسه و سول اوتيلير سولان بر اترك كذا سولان ايمز سولان سولان</td></tr><tr><td colspan="4">THE ORIGINAL AND ALL COPIES OF THIS DRAWING TOGETHER WITH THE COPYRIGHT THEREON ARE THE SOLE PROPERTY OF N.I.S.O.C. / FIELDS</td></tr></table>						REV.	DESCRIPTION	CHECKED	REV. APPR.	***	*****	REV. BY	DATE	كليه ايمز هندسه و سول اوتيلير سولان بر اترك كذا سولان ايمز سولان سولان				THE ORIGINAL AND ALL COPIES OF THIS DRAWING TOGETHER WITH THE COPYRIGHT THEREON ARE THE SOLE PROPERTY OF N.I.S.O.C. / FIELDS			
D09	MAR.2023	PI	K.HAFSAH	M.HAFSAH	M.HAFSAH																																																				
D08	OCT.2022	PI	K.HAFSAH	M.HAFSAH	M.HAFSAH																																																				
D01	OCT.2021	PI	K.HAFSAH	M.HAFSAH	M.HAFSAH																																																				
D00	AUG.2021	PI	M.HAFSAH	M.HAFSAH	S.HAFSAH																																																				
REV.	DATE	P.O.I.#	PREP.	CHK.	APP.																																																				
REV.	DESCRIPTION	CHECKED	REV. APPR.																																																						
***	*****	REV. BY	DATE																																																						
كليه ايمز هندسه و سول اوتيلير سولان بر اترك كذا سولان ايمز سولان سولان																																																									
THE ORIGINAL AND ALL COPIES OF THIS DRAWING TOGETHER WITH THE COPYRIGHT THEREON ARE THE SOLE PROPERTY OF N.I.S.O.C. / FIELDS																																																									
PROJECT NAME: BINAK OILFIELD DEVELOPMENT GENERAL						 THE ORIGINAL AND ALL COPIES OF THIS DRAWING TOGETHER WITH THE COPYRIGHT THEREON ARE THE SOLE PROPERTY OF N.I.S.O.C. / FIELDS																																																			
PROJECT NO.: 971020																																																									
EPC CONTRACTOR:			SPD/EPC CONTRACTOR (GC):			BINAK OILFIELD DEVELOPMENT GENERAL																																																			
						PETROIRAN DEVELOPMENT COMPANY																																																			
DATE						SCALE																																																			
DRAWING BY						CHECKED BY																																																			
PROJECT E						NO CONSTRUCTION PERMITTED UNLESS DRAWING APPROVED																																																			
TYPICAL INSTALLATION DETAILS & NOTES FOR LIGHTING SYSTEM						APPROVED FOR CONSTRUCTION BY: DATE:																																																			
(SCALE)		SHEET		DRAWING NO.		SHEET NO.		REV.		BUDGET REF.		LOCATION		SIZE		SERIAL NO.		SHEET		REV.																																					
N.T.S		A8		BK-GRNAL-PEDCO-000-EL-DW-0008		28		03		000-079-9184		P		2		707225		03		03																																					

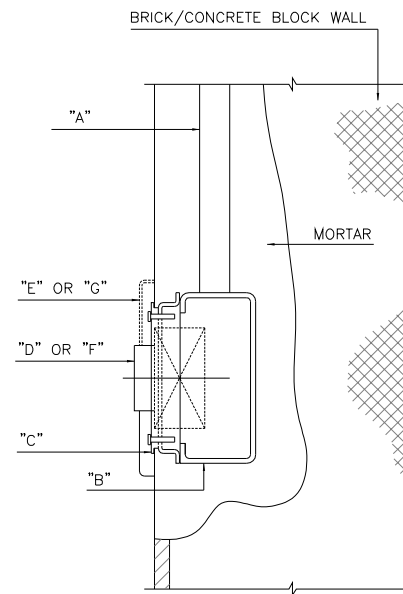




ITEM	D E S C R I P T I O N	QTY.	REMARKS
A	RAWL PLUG FOR M60x6mm	4	
B	PAN SCREW M60	4	

EXIT LIGHTING FIXTURE
WALL MOUNTED TYPE
X

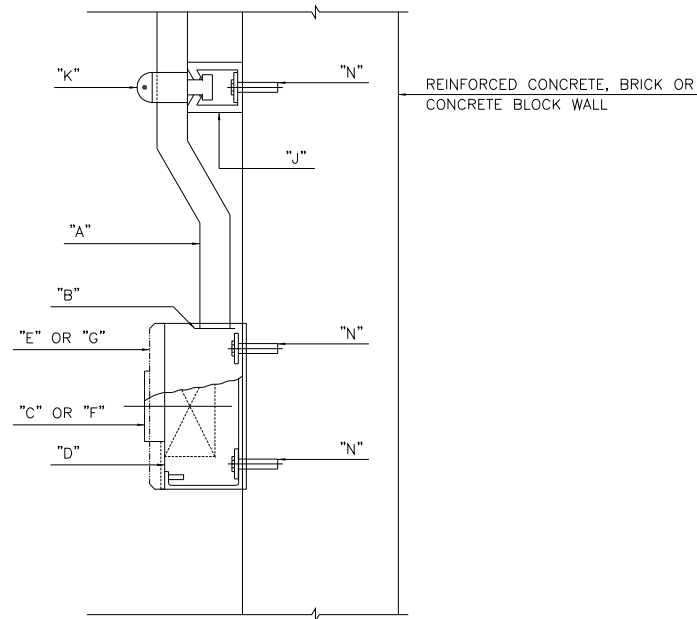
D03		MAR.2023		PI		ELFABRHS		ELFABRHS		ELFABRHS																													
D02		OCT.2022		PI		ELFABRHS		ELFABRHS		ELFABRHS		*****				DATE		BY		DATE																			
D01		OCT.2021		PI		ELFABRHS		ELFABRHS		ELFABRHS						DATE		BY		DATE																			
D00		AUG.2021		PI		MUCHAMMAD		ELFABRHS		ELFABRHS				REV.		CHECKED				REV. APPR.																			
REV.		DATE		P.O.I.F		PREP.		CHK.		APP.		AUT.																											
PROJECT NAME:										BINAK OILFIELD DEVELOPMENT GENERAL										<div></div> <div>THE ORIGINAL AND ALL COPIES OF THIS DRAWING TOGETHER WITH THE COPYRIGHT THEREON ARE THE SOLE PROPERTY OF N.I.S.O.C. / FIELDS</div>																			
PROJECT NO.:										971020																													
EPC CONTRACTOR:										EPD/EPC CONTRACTOR (GC):										BINAK OILFIELD DEVELOPMENT GENERAL																			
<div></div> <div>HIRSAN ENERGY – DESIGN & INSPECTION COMPANIES</div>										<div></div> <div>PETROIRAN DEVELOPMENT COMPANY</div>										<table><tr><td>DATE</td><td>SCALE</td><td>DRAWING BY</td><td>CHECKED BY</td><td>PROJECT ENG.</td></tr><tr><td></td><td></td><td></td><td></td><td></td></tr></table>										DATE	SCALE	DRAWING BY	CHECKED BY	PROJECT ENG.					
DATE	SCALE	DRAWING BY	CHECKED BY	PROJECT ENG.																																			
DRAWING TITLE:										NO CONSTRUCTION PERMITTED UNLESS DRAWING APPROVED																													
TYPICAL INSTALLATION DETAILS & NOTES FOR LIGHTING SYSTEM										APPROVED FOR CONSTRUCTION BY:										SERIAL NO.:		DATE:																	
SCALE		SIZE		DRAWING NO.		SHEET NO.		REV.		BUDGET REF.		LOCATION		SIZE		CLASS		BY		DATE		REVISION																	
N.T.S		A3		BK-ONRM-PEDCO-000-EL-DE-0003		31		OF 39		D03		008-072-9104		P		S		P		707225		31/03/23		D03															



ITEM	D E S C R I P T I O N	QTY.	REMARKS
A	ELECTRICAL METALLIC TUBING(EMT)	AS REQ	
B	OUTLET BOX	1	
C	MOUNTING PLATE	1	
D	TUMBLER SWITCH	1	
E	TUMBLER SWITCH COVER	1	
F	CONVENIENCE OUTLET	1	
G	CONVENIENCE OUTLET COVER	1	

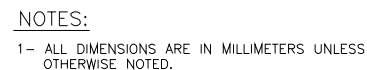
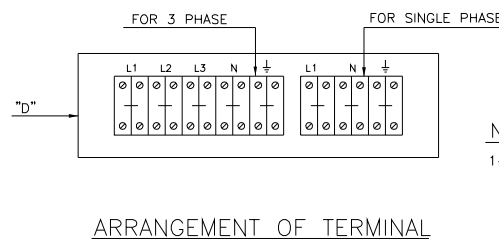
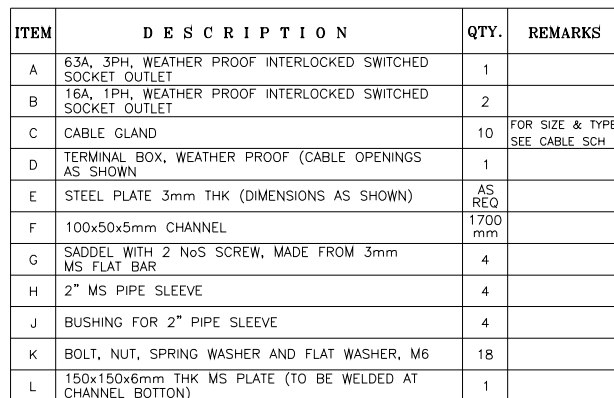
SWITCH, SOCKET AND BOX INSTALLATION (RECESSED MOUNTED TYPE)

D09	MAR.2023	P1	KURMANA	M/KASHEM	MEDHABAD																																																																																																																																																																																																																																																																																																																																																																																																																																																																																																																																																																																																																																																																																																																																																																																																																																																																																																																																																																																																																																																																																																																																																																																																																																																																																																																																																																																																																																																														
-----	----------	----	---------	----------	----------	--	--	--	--	--	--	--	--	--	--	--	--	--	--	--	--	--	--	--	--	--	--	--	--	--	--	--	--	--	--	--	--	--	--	--	--	--	--	--	--	--	--	--	--	--	--	--	--	--	--	--	--	--	--	--	--	--	--	--	--	--	--	--	--	--	--	--	--	--	--	--	--	--	--	--	--	--	--	--	--	--	--	--	--	--	--	--	--	--	--	--	--	--	--	--	--	--	--	--	--	--	--	--	--	--	--	--	--	--	--	--	--	--	--	--	--	--	--	--	--	--	--	--	--	--	--	--	--	--	--	--	--	--	--	--	--	--	--	--	--	--	--	--	--	--	--	--	--	--	--	--	--	--	--	--	--	--	--	--	--	--	--	--	--	--	--	--	--	--	--	--	--	--	--	--	--	--	--	--	--	--	--	--	--	--	--	--	--	--	--	--	--	--	--	--	--	--	--	--	--	--	--	--	--	--	--	--	--	--	--	--	--	--	--	--	--	--	--	--	--	--	--	--	--	--	--	--	--	--	--	--	--	--	--	--	--	--	--	--	--	--	--	--	--	--	--	--	--	--	--	--	--	--	--	--	--	--	--	--	--	--	--	--	--	--	--	--	--	--	--	--	--	--	--	--	--	--	--	--	--	--	--	--	--	--	--	--	--	--	--	--	--	--	--	--	--	--	--	--	--	--	--	--	--	--	--	--	--	--	--	--	--	--	--	--	--	--	--	--	--	--	--	--	--	--	--	--	--	--	--	--	--	--	--	--	--	--	--	--	--	--	--	--	--	--	--	--	--	--	--	--	--	--	--	--	--	--	--	--	--	--	--	--	--	--	--	--	--	--	--	--	--	--	--	--	--	--	--	--	--	--	--	--	--	--	--	--	--	--	--	--	--	--	--	--	--	--	--	--	--	--	--	--	--	--	--	--	--	--	--	--	--	--	--	--	--	--	--	--	--	--	--	--	--	--	--	--	--	--	--	--	--	--	--	--	--	--	--	--	--	--	--	--	--	--	--	--	--	--	--	--	--	--	--	--	--	--	--	--	--	--	--	--	--	--	--	--	--	--	--	--	--	--	--	--	--	--	--	--	--	--	--	--	--	--	--	--	--	--	--	--	--	--	--	--	--	--	--	--	--	--	--	--	--	--	--	--	--	--	--	--	--	--	--	--	--	--	--	--	--	--	--	--	--	--	--	--	--	--	--	--	--	--	--	--	--	--	--	--	--	--	--	--	--	--	--	--	--	--	--	--	--	--	--	--	--	--	--	--	--	--	--	--	--	--	--	--	--	--	--	--	--	--	--	--	--	--	--	--	--	--	--	--	--	--	--	--	--	--	--	--	--	--	--	--	--	--	--	--	--	--	--	--	--	--	--	--	--	--	--	--	--	--	--	--	--	--	--	--	--	--	--	--	--	--	--	--	--	--	--	--	--	--	--	--	--	--	--	--	--	--	--	--	--	--	--	--	--	--	--	--	--	--	--	--	--	--	--	--	--	--	--	--	--	--	--	--	--	--	--	--	--	--	--	--	--	--	--	--	--	--	--	--	--	--	--	--	--	--	--	--	--	--	--	--	--	--	--	--	--	--	--	--	--	--	--	--	--	--	--	--	--	--	--	--	--	--	--	--	--	--	--	--	--	--	--	--	--	--	--	--	--	--	--	--	--	--	--	--	--	--	--	--	--	--	--	--	--	--	--	--	--	--	--	--	--	--	--	--	--	--	--	--	--	--	--	--	--	--	--	--	--	--	--	--	--	--	--	--	--	--	--	--	--	--	--	--	--	--	--	--	--	--	--	--	--	--	--	--	--	--	--	--	--	--	--	--	--	--	--	--	--	--	--	--	--	--	--	--	--	--	--	--	--	--	--	--	--	--	--	--	--	--	--	--	--	--	--	--	--	--	--	--	--	--	--	--	--	--	--	--	--	--	--	--	--	--	--	--	--	--	--	--	--	--	--	--	--	--	--	--	--	--	--	--	--	--	--	--	--	--	--	--	--	--	--	--	--	--	--	--	--	--	--	--	--	--	--	--	--	--	--	--	--	--	--	--	--	--	--	--	--	--	--	--	--	--	--	--	--	--	--	--	--	--	--	--	--	--	--	--	--	--	--	--	--	--	--	--	--	--	--	--	--	--	--	--	--	--	--	--	--	--	--	--	--	--	--	--	--	--	--	--	--	--	--	--	--	--	--	--	--	--	--	--	--	--	--	--	--	--	--	--	--	--	--	--	--	--	--	--	--	--	--	--	--	--	--	--	--	--	--	--	--	--	--	--	--	--	--	--	--	--	--	--	--	--	--	--	--	--	--	--	--	--	--	--	--	--	--	--	--	--	--	--	--	--	--	--	--	--	--	--	--	--	--	--	--	--	--	--	--	--	--	--	--	--	--	--	--	--	--	--	--	--	--	--	--	--	--	--	--	--	--	--	--	--	--	--	--	--	--	--	--	--	--	--	--	--	--	--	--	--	--	--	--	--	--	--	--	--	--	--	--	--	--	--	--	--	--	--	--	--	--	--	--	--	--	--	--	--	--	--	--	--	--	--	--	--	--	--	--	--	--	--	--	--	--	--	--	--	--	--	--	--	--	--	--	--	--	--	--	--	--	--	--	--	--	--	--	--	--	--	--	--	--	--	--	--	--	--	--	--	--	--	--	--	--	--	--	--	--	--	--	--	--	--	--	--	--	--	--	--	--	--	--	--	--	--	--	--	--	--	--	--	--	--	--	--	--	--	--	--	--	--	--	--	--	--	--	--	--	--	--	--	--	--	--	--	--	--	--	--	--	--	--	--	--	--	--	--	--	--	--	--	--	--	--	--	--	--	--	--	--	--	--	--	--	--	--	--	--	--	--	--	--	--	--	--	--	--	--	--	--	--	--	--	--	--	--	--	--	--	--	--	--	--	--	--	--	--	--	--	--	--	--	--	--	--	--	--	--	--	--	--	--	--	--	--	--	--	--	--	--	--	--	--	--	--	--	--	--	--	--	--	--	--	--	--	--	--	--	--	--	--	--	--	--	--	--	--	--	--	--	--	--	--	--	--	--	--	--	--	--	--	--	--	--	--	--	--	--	--	--	--	--	--	--	--	--	--	--	--	--	--	--	--	--	--	--	--	--	--	--	--	--	--	--	--	--	--	--	--	--	--	--	--	--	--	--	--	--	--	--	--	--



NOTES	
LEGEND	
REFERENCE DRAWING	DRG. No.
IPS Lighting Installation Details (Category 500)	IPS-D-BL-500
KEY PLAN	

[illegible]



(VENDOR TITLE BLOCK)***

[illegible]

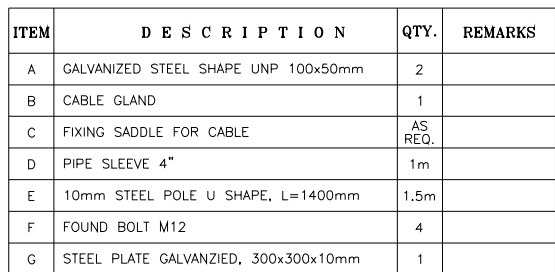





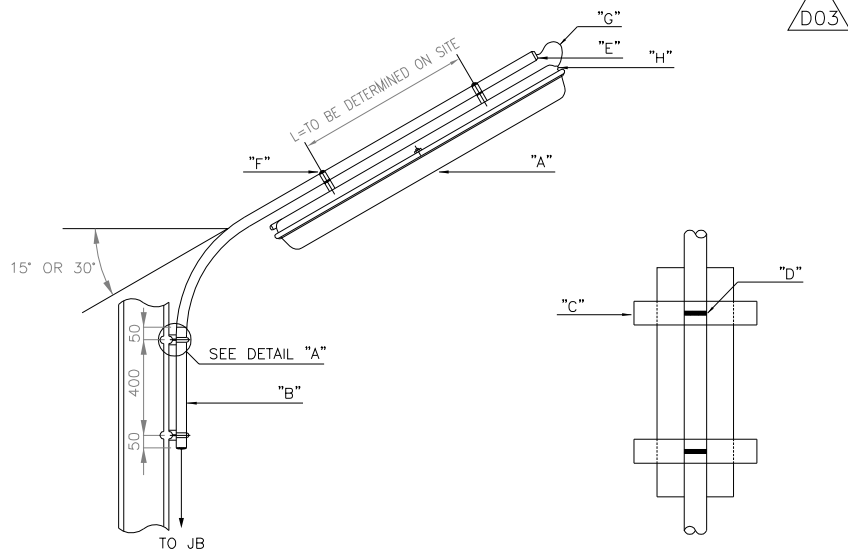
FIG: 1
STRUCTURE MOUNTED



FIG: 2
STAND MOUNTED

SOCKET OUTLET INSTALLATION (STRUCTURE MOUNTED /STAND MOUNTED)

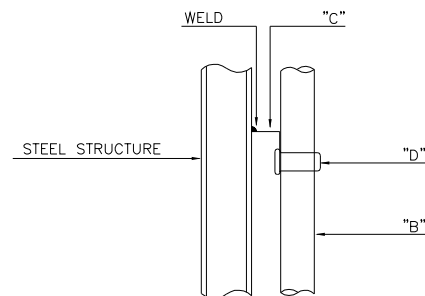
D03	MAR.2023	PI	K.HAMADA	M.FAKHREH	M.HUSSEIN		444	*****	BY	DATE	BY	DATE	
D02	OCT.2022	PI	K.HAMADA	M.FAKHREH	M.HUSSEIN		REV. DISCRPTION						
D01	OCT.2021	PI	K.HAMADA	M.FAKHREH	M.HUSSEIN		BY DATE BY DATE						
D00	AUG.2021	PI	M.HAMADAN	M.FAKHREH	M.HUSSEIN		REV. APPR.						
REV.	DATE	P.O.I.S	PREP.	CHK.	APP.	AUT.	امز و کایه دیع این نقشه و حر اقلایس مقاص به ترکات این مناطق تحت عنوان مجوز می باشد						
PROJECT NAME:							BINAK OILFIELD DEVELOPMENT GENERAL						
PROJECT NO.:							971020						
EPC CONTRACTOR:							EPD/EPC CONTRACTOR (GC):						
 													
HUSSEIN ENERGY - DESIGN & INSPECTION COMPANIES							PETROIRAN DEVELOPMENT COMPANY						
DATE							SCALE						
DRAWING BY							CHECKED BY						
PROJECT ENG.							PROJECT ENG.						
DRAWING TITLE:													
TYPICAL INSTALLATION DETAILS & NOTES FOR LIGHTING SYSTEM													
NO CONSTRUCTION PERMITTED UNLESS DRAWING APPROVED													
APPROVED FOR CONSTRUCTION BY: DATE:													
BUDGET REF. LOCATION SITE CLASS SERIAL NO. REVISION													
003-073-9184 1 2 P 707225 38 OF 38 D03													



FRONT VIEW

NOTE:

- 1-FOR JUNCTION BOX INSTALLATION DETAILS SEE LS134
- 2-ALL SLOTS SHALL BE SEALED WITH PLASTIC COMPOUND AFTER CABLE INSTALLATION.



DETAIL "A"

ITEM	DESCRIPTION	QTY.	REMARKS
A	FLUORESCENT LIGHTING FIXTURE	1	
B	GALVANIZED STEEL PIPE 2"	AS REQ.	
C	CHANNEL, 100x50x6	1	
D	U BOLT FOR 2" PIPE	2	
E	PVC BUSHING FOR GALVANIZED STEEL PIPE 2"	1	
F	GALVANIZED CLAMPING RING 40x6mm	2	
G	CABLE	AS REQ.	
H	CABLE GLAND	1	

FLUORESCENT FIXTURE, BRACKET MOUNTED
(ON STEEL STRUCTURE)

REV.	DATE	DESCRIPTION	CHECKED	REV. APPR.
DDO	MAR.2003	PI	ALHABASH	ALHABASH
DDO	OCT.2002	PI	ALHABASH	ALHABASH
DDO	OCT.2001	PI	ALHABASH	ALHABASH
DDO	AUG.2001	PI	ALHABASH	ALHABASH
REV.	DATE	P.O.I.B	PREP.	CHK.
			APP.	AUT.
PROJECT NAME: BINAK OILFIELD DEVELOPMENT GENERAL				
PROJECT NO.: 971020				
EPC CONTRACTOR: HIRAN ENERGY DESIGN & INSPECTION COMPANIES				
EPD/EPC CONTRACTOR (GO): PETROIRAN DEVELOPMENT COMPANY				
DRAWING TITLE: TYPICAL INSTALLATION DETAILS & NOTES FOR LIGHTING SYSTEM				
NO CONSTRUCTION PERMITTED UNLESS DRAWING APPROVED				
APPROVED FOR CONSTRUCTION BY: DATE:				
SCALE	SIZE	DRAWING NO.	SHEET NO.	REV.
N/A	AS	IK-GHRAI-PEDCO-000-EL-DW-0003	38 OF 39	DDO
BUDGET REF.	LOCATION	SIZE	CLASS	SERIAL NO.
008-070-8104	P	2	P	707225
SHEET	REVISION			
38 OF 38	DDO			

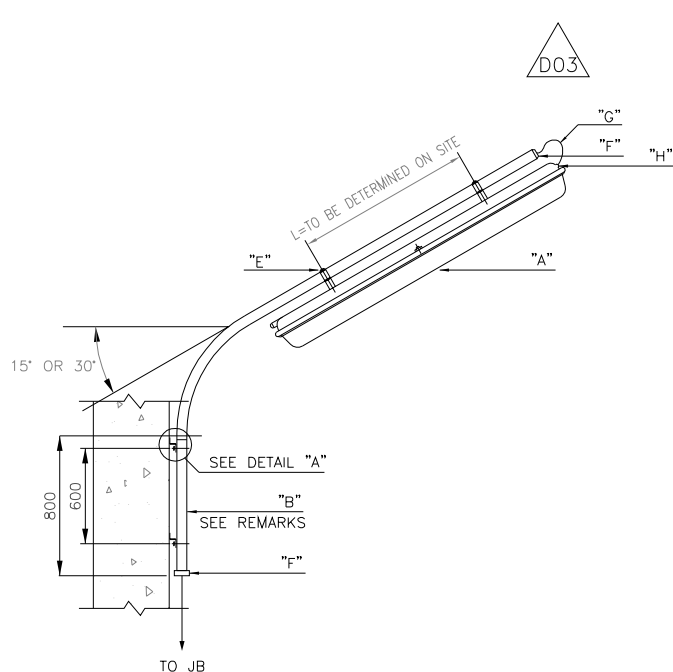
NOTES

LEGEND

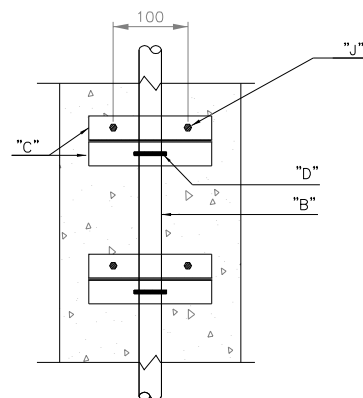
KEY PLAN

REFERENCE DRAWING	DRG. No.
IPS Lighting Installation Details (Category 300)	IPS-D-EL-300

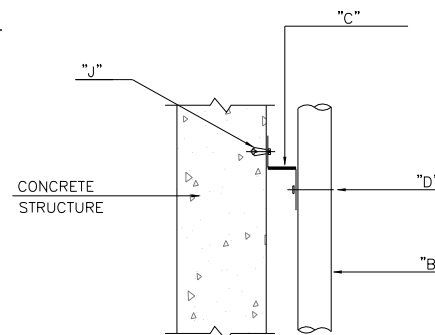
THE ORIGINAL AND ALL COPIES OF THIS DRAWING TOGETHER WITH THE COPYRIGHT THEREIN ARE THE SOLE PROPERTY OF N.I.S.O.C./ FIELDS



SIDE ELEVATION




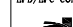

FRONT ELEVATION
(CONCRETE COLUMN)



DETAIL "A"

ITEM	DESCRIPTION	QTY.	REMARKS
A	FLUORESCENT LIGHTING FIXTURE EX PROTECTION	1	BY FIXTURE VENDOR
B	HOT DIP GALVANIZED STEEL PIPE, 2"	AS REQ.	MIN. LENGTH 240cm
C	FIXING SUPPORT	2	
D	"U" BOLT M8, C/W NUTS & WASHERS	2	
E	LIGHTING FIXTURE FIXING CLAMP	2	BY FIXTURE VENDOR
F	PVC BUSHING	1	
G	CABLE	1	
H	CABLE GLAND	AS REQ.	BY FIXTURE VENDOR
J	EXPANSION BOLT SUITABLE FOR CONCRETE, M8	4	

FLUORESCENT FIXTURE, BRACKET MOUNTED (ON CONCRETE COLUMN)

NOTES										
LEGEND										
REFERENCE DRAWING					DRG. No.					
IPB Lighting Installation Details (Category 300)										
KEY PLAN										
D03	MAR.2023	PI	1.000000	1.000000	1.000000					
D02	OCT.2022	PI	1.000000	1.000000	1.000000					
D01	OCT.2021	PI	1.000000	1.000000	1.000000					
D00	AUG.2021	PI	1.000000	1.000000	1.000000					
REV.	DATE	P.O.I.S	PREP.	CHK.	APP.	AUT.	DESCRIPTION	CHECKED	REV. APPR.	
PROJECT NAME: BINAK OILFIELD DEVELOPMENT GENERAL										
PROJECT NO.: 971080										
EPC CONTRACTOR:					EPD/EPC CONTRACTOR (GC):					
 MIRGAN ENERGY - DESIGN & INSPECTION COMPANIES					 PETROIRAN DEVELOPMENT COMPANY					
BINAK OILFIELD DEVELOPMENT GENERAL										
 THE ORIGINAL AND ALL COPIES OF THE DRAWING TOGETHER WITH THE APPROVAL THEREON ARE THE SOLE PROPERTY OF N.I.S.O.C. / FIELDS										
DATE		SCALE		DRAWING BY		CHECKED BY		PROJECT ENG.		
NO CONSTRUCTION PERMITTED UNLESS DRAWING APPROVED										
APPROVED FOR CONSTRUCTION BY:					BY:		DATE:			
BUDGET REP.					LOCATION		SIZE		CLASS	
000-073-0184					P		2		P	
707225					39		OF		39	
D03					D03		D03		D03	

(VENDOR TITLE BLOCK)**