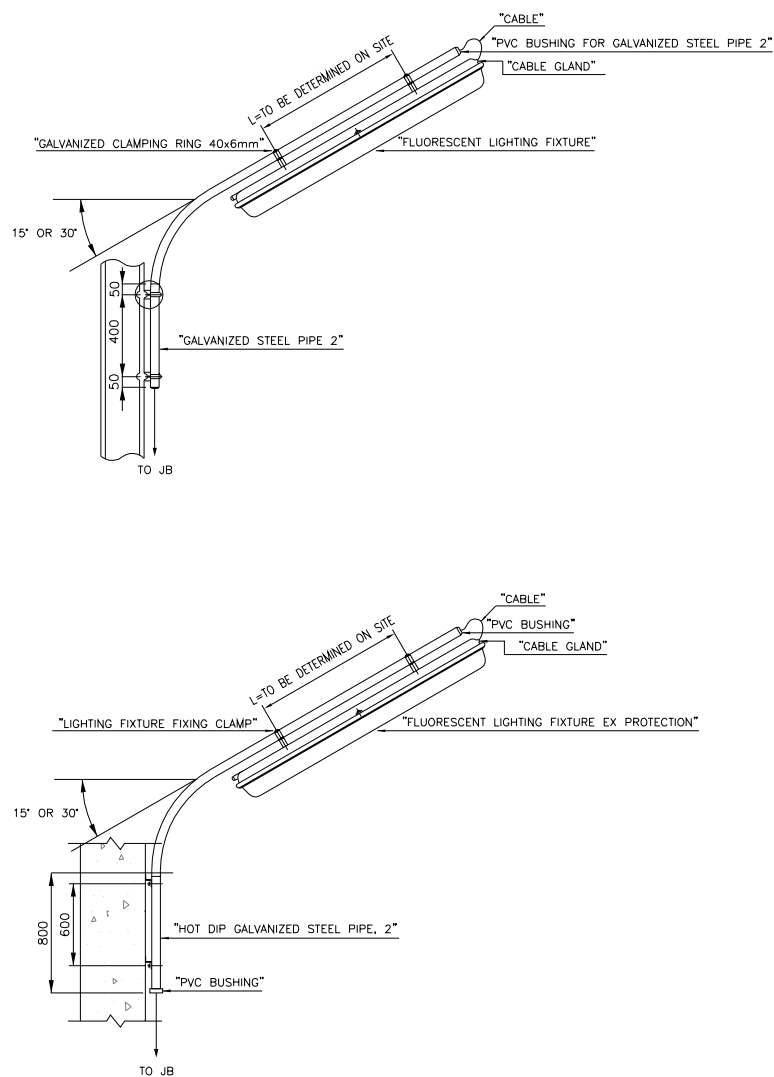
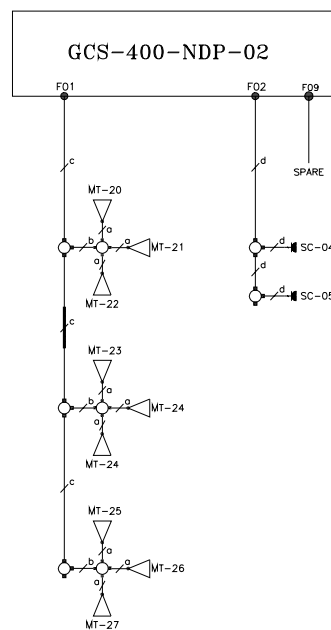
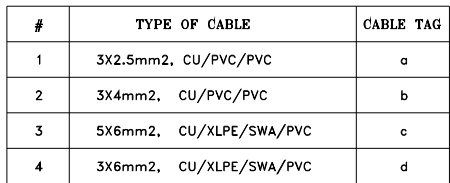
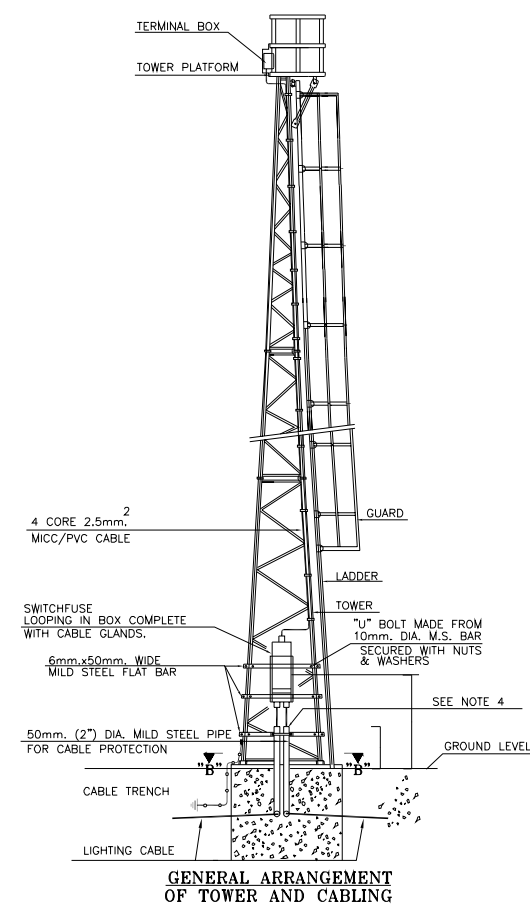
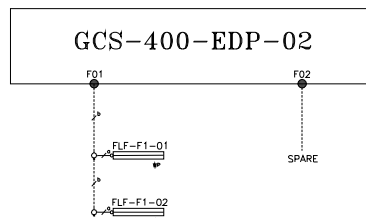
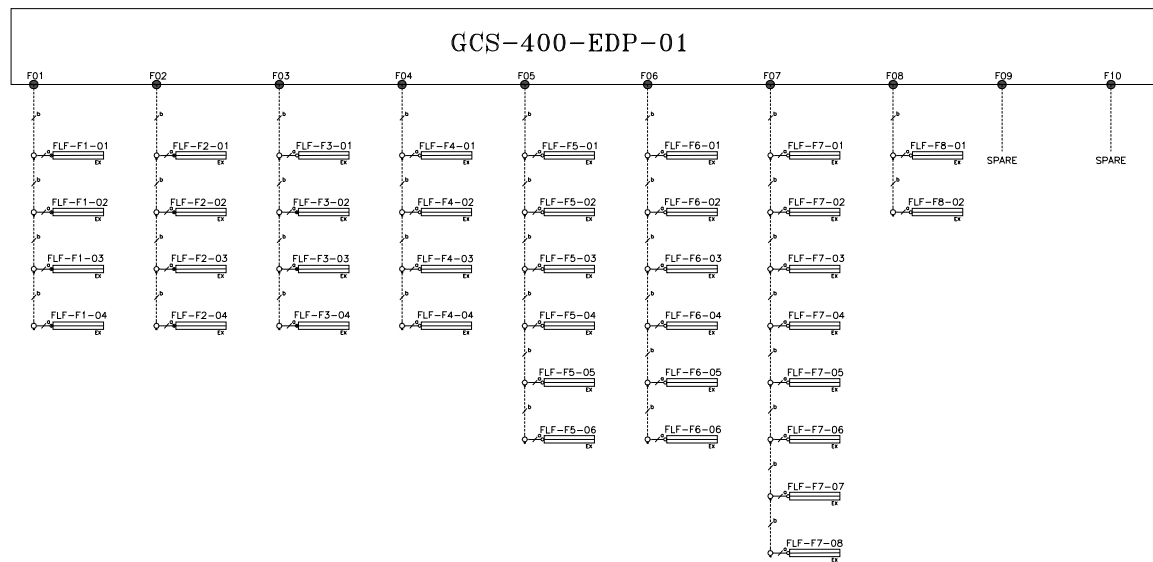


[illegible][illegible]

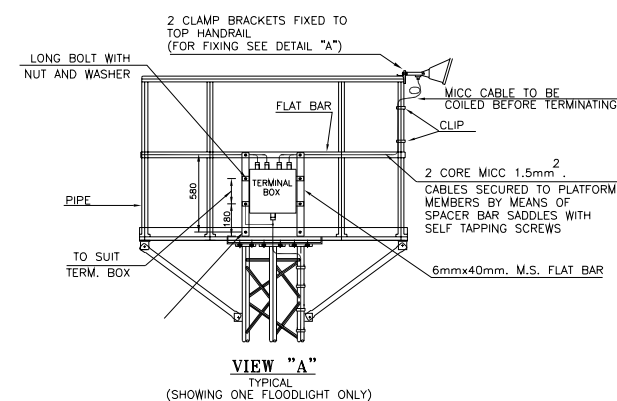
[illegible]



SIDE ELEVATION

















FLOODLIGHTING  
(MOUNTED ON TOWER)



### NOTES

- 1- ALL CABLES SHALL BE FIXED TO PANEL BY GLAND.
- 2- ELECTRICAL DISTRIBUTION PANEL IS WALL MOUNTED TYPE & IP 55.
- 3- CABLING SHALL BE DONE IN OPEN CONDUIT SYSTEM.
- 4- ALL CABLE LINES SHALL BE CONNECTED TO PANEL FROM THE NEAREST PATH.
- 5- ALTHOUGH THE LOCATION OF EQUIPMENT HAS BEEN SHOWN, BUT AS SYMBOLS ARE NOT TO SCALE, MOST SUITABLE POSITIONS ARE TO BE CHOSEN AT SITE.
- 6- OUTDOOR ELECTRICAL DISTRIBUTION PANELS WILL BE INSTALLED IN SAFE AREA NEAR COMPRESSOR SHELTER & FIRE FIGHTING TO SUPPLY NDB-01 & NDB-02
- 7- NEW 15MM LATTICE LIGHTING POLE WILL BE INSTALLED IN SAFE AREA, LIGHTING POLES FLT-2PST, FLT-3PST, FLT-4PST & FLT-5PST ARE EXISTING ON WHICH 1 OR 2 NEW FLOUGHTS HAVE BEEN MADE. SINCE EXISTING POLES IS NOT CAPABLE TO FEED NEW LIGHTS, THEREFORE NEW FLOUGHTS WILL BE FED FROM NDB-01 & NDB-02.
- 8- OUTDOOR LIGHTING SHALL BE TURNED ON/OFF BY PHOTOCELL.
- 9- ACCORDING TO DOCUMENT "HAZARDOUS AREA CLASSIFICATION", FLUORESCENT FIXTURE & OUTLET SOCKET IN PROCESS AREA SHALL BE "LED LBB T3"

### LEGEND

	A) LIGHTING FIXTURE TWIN FLUORESCENT LAMPS (1Pn-N),2,30V,50Hz,2X36W, POLE MOUNTED
	A) LIGHTING FIXTURE TWIN FLUORESCENT LAMPS (1Pn-N),2,30V,50Hz,2X36W, BRACKET MOUNTED
	A) NEW FLOODLIGHT FIXTURE,1X400W, METAL HAUSE LAMP. IP65
	A) EXISTING FLOODLIGHT FIXTURE,1X1500W, TUNGSTEN HALOGEN
	A) 63A, 400V, THREE PHASE WELDING SOCKET OUTLET, WITH SWITCH, 3P+N+E, EX
	A) 16A, 230V, ONE PHASE WELDING SOCKET OUTLET, WITH SWITCH, 1P+N+E, EX
	A) - WP- WEATHER PROOF TYPE - EX- EXPLOSION PROOF TYPE
	LIGHTING JUNCTION BOX
	RUN OF CABLE IN CONDUIT
	RUN OF CABLE IN BURIED TRENCH
	LIGHTING PANEL BOARD (TYPICAL)3,IP55
	TYPICAL INSTALLATION NOTE NO.1
	SFC SFC SFC
	DUCT BANK

REFERENCE DRAWING	DRG. No.
UNIT FLOOR PLAN DRAWING	BK-GCS-PEDCO-120-PI-PY-0001
SPECIFICATION FOR LIGHTING & SMALL POWER SYSTEM	BK-GNRL-PEDCO-000-EL-DF-0007
TYPICAL INSTALLATION DETAILS & NOTES FOR LIGHTING SYSTEM	BK-GNRL-PEDCO-000-EL-DF-0003
TYPICAL INSTALLATION DETAILS & NOTES FOR POWER SYSTEM	BK-GNRL-PEDCO-000-EL-DF-0004
CALCULATION NOTE FOR OUTDOOR AREA LIGHTING SYSTEM	BK-GCS-PEDCO-120-EL-CN-0001
LIGHTING & SMALL POWER LAYOUT FOR BUILDING & SHEDDER	BK-GCS-PEDCO-120-EL-PY-0004
DISTRIBUTION & LIGHTING PANELS SINGLE LINE DIAGRAM	BK-GCS-PEDCO-120-EL-RA-0004
HAZARDOUS AREA CLASSIFICATION LAYOUT	BK-GCS-PEDCO-120-EL-SR-0006

## KEY PLAN

[illegible]