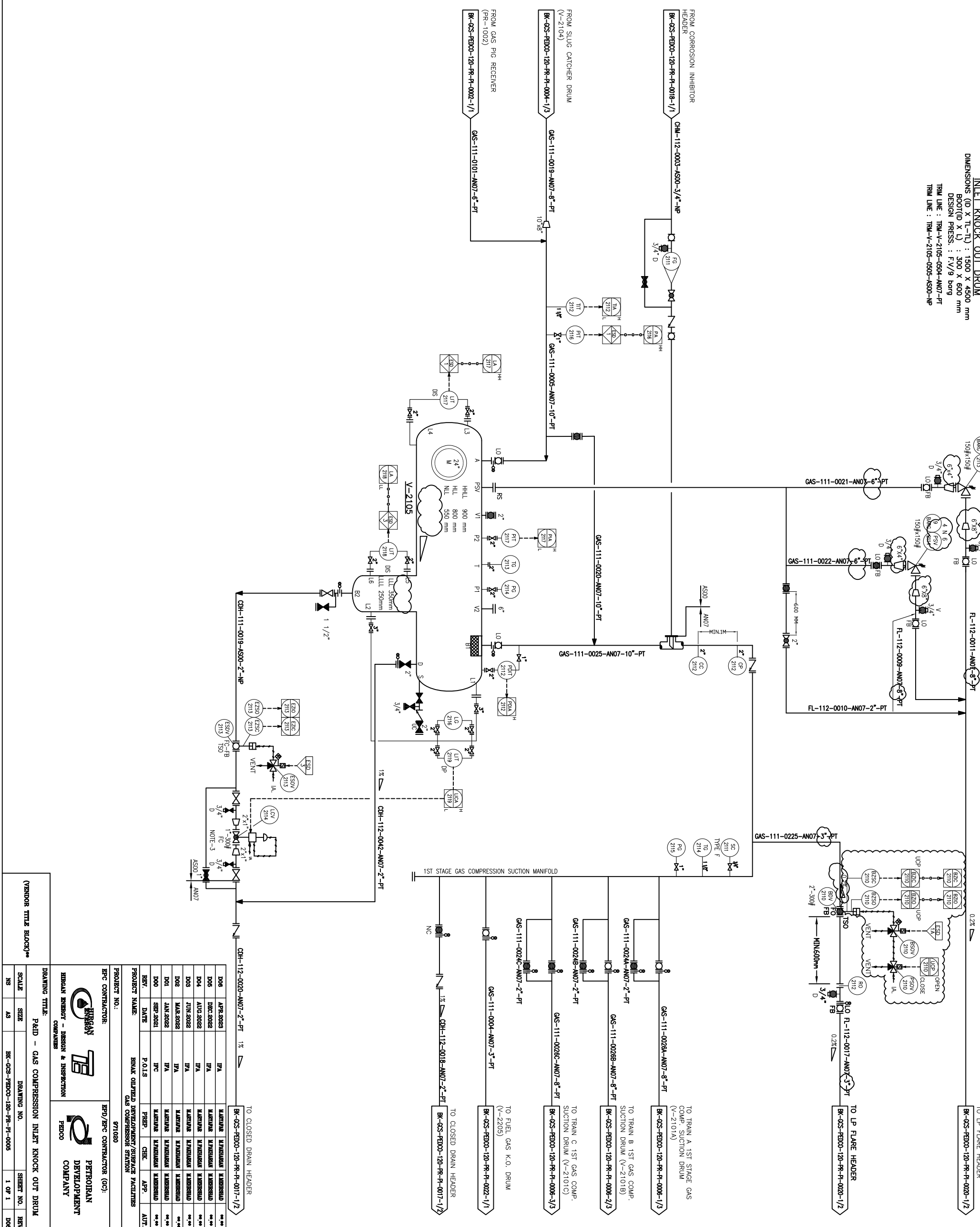


V-2105
INLET KNOCK OUT DRUM

DIMENSIONS (D X T-L) : 1500 X 4500 mm
BOOT(D X L) : 300 X 600 mm
DESIGN PRESS. : F.V/9 barg
TRM LINE : TRM-V-2105-0504-AN07-PT
TRM LINE : TRM-V-2105-0505-AS00-NP



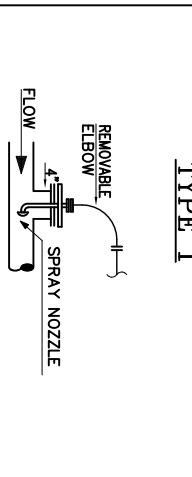
NOTES

- 1- DELETED
- 2- DELETED
- 3- CONTROL VALVE SIZING WILL BE FINALIZED BY VENDOR.
- 4- PARTIAL STROKE DEVICE TO BE CONSIDERED FOR ALL ESP'S ACTIVATED BY ESP I/O.

LEGEND

REFERENCE DRAWING	DRG. No.
Process Flow Diagram	BK-GCS-FE000-120-RR-PI-001
Symbol & Legend For PFD and P&ID	BK-GCS-FE000-120-RR-PI-001

KEY PLAN



REVISIONS

NO.	DATE	DESCRIPTION	BY	DATE	CHK.	APP.	AUT.

NO CONSTRUCTION PERMITTED UNLESS DRAWING APPROVED

APPROVED FOR CONSTRUCTION BY: DATE: SHEET NO. 1 OF 1

PROJECT NO. 706783

NO.	DATE	DESCRIPTION	BY	DATE	CHK.	APP.	AUT.
D06	APR.2023	PIA	XXXXXXXXXX	XXXXXXXXXX	XXXXXXXXXX	XXXXXXXXXX	XXXXXXXXXX
D06	DEC.2022	PIA	XXXXXXXXXX	XXXXXXXXXX	XXXXXXXXXX	XXXXXXXXXX	XXXXXXXXXX
D04	AUG.2022	PIA	XXXXXXXXXX	XXXXXXXXXX	XXXXXXXXXX	XXXXXXXXXX	XXXXXXXXXX
D03	JUN.2022	PIA	XXXXXXXXXX	XXXXXXXXXX	XXXXXXXXXX	XXXXXXXXXX	XXXXXXXXXX
D02	MAR.2022	PIA	XXXXXXXXXX	XXXXXXXXXX	XXXXXXXXXX	XXXXXXXXXX	XXXXXXXXXX
D01	JAN.2022	PIA	XXXXXXXXXX	XXXXXXXXXX	XXXXXXXXXX	XXXXXXXXXX	XXXXXXXXXX
D00	SEP.2021	PIA	XXXXXXXXXX	XXXXXXXXXX	XXXXXXXXXX	XXXXXXXXXX	XXXXXXXXXX

PROJECT NAME: BINAQ OILFIELD DEVELOPMENT/SURFACE FACILITIES

PROJECT NO.: 711020

EPC CONTRACTOR: HIRSHAN ENERGY - DESIGN & INSPECTION COMPANIES

END/EPC CONTRACTOR (GC): PETROBRAN DEVELOPMENT COMPANY

DRAWING TITLE: P&ID - GAS COMPRESSION INLET KNOCK OUT DRUM

SCALE: AS

REVISIONS: 1 OF 1

(VENDOR TITLE BLOCK)