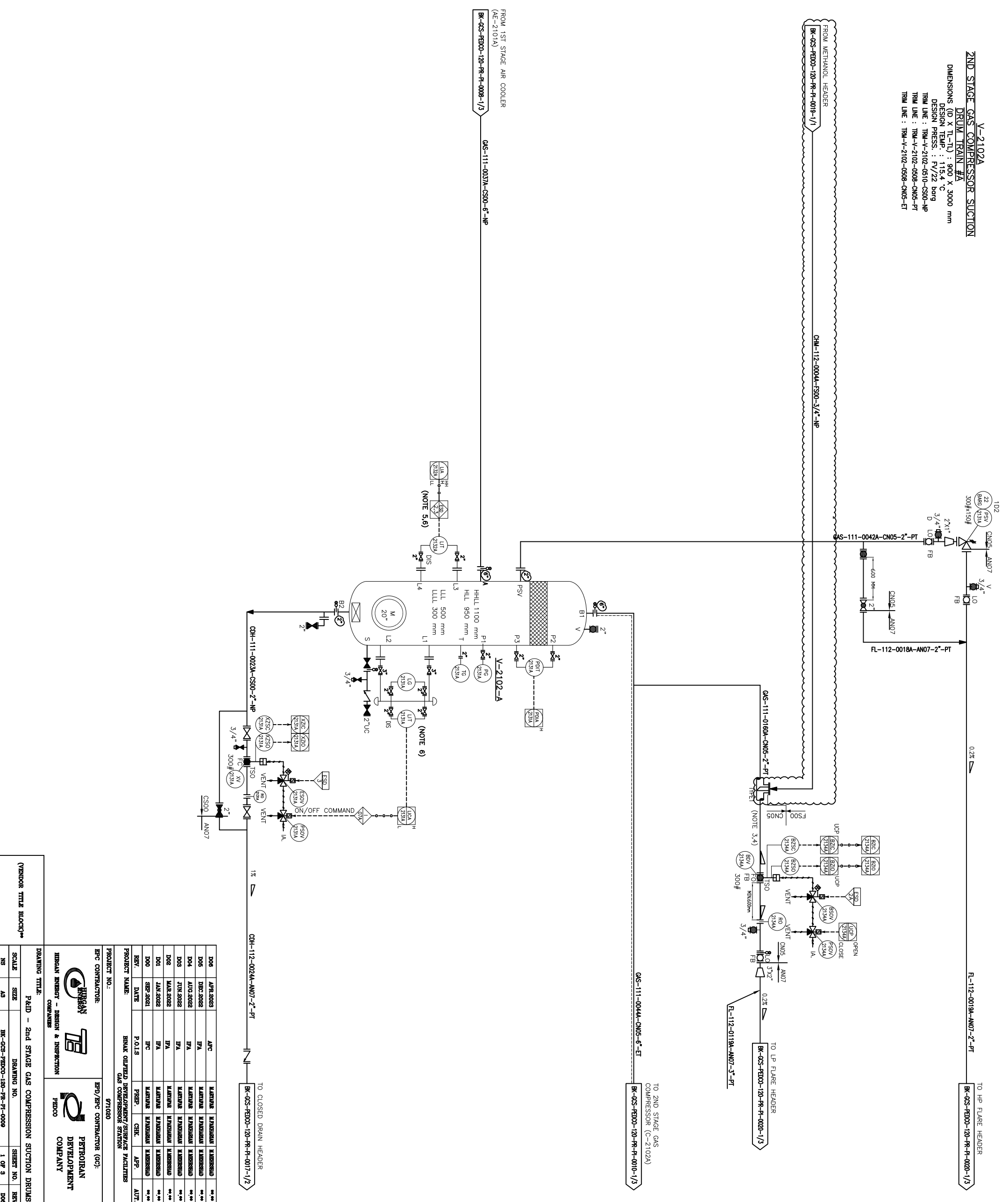


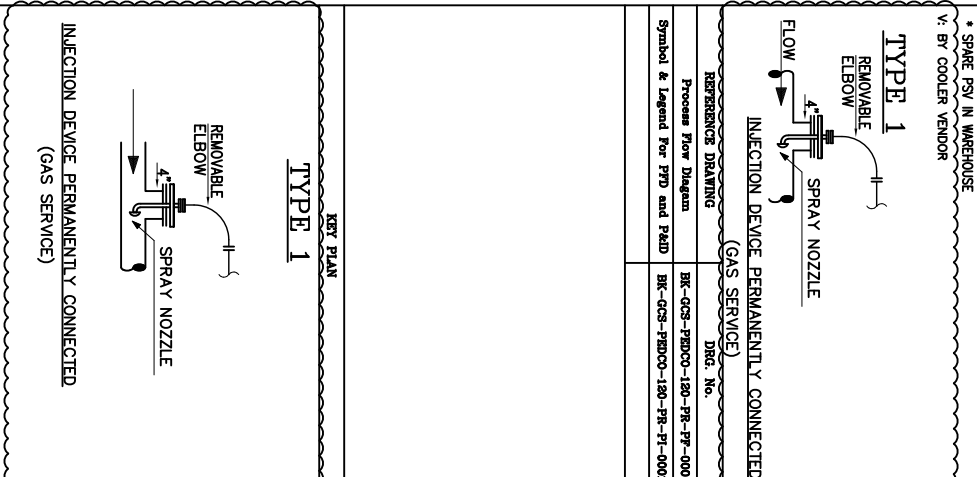
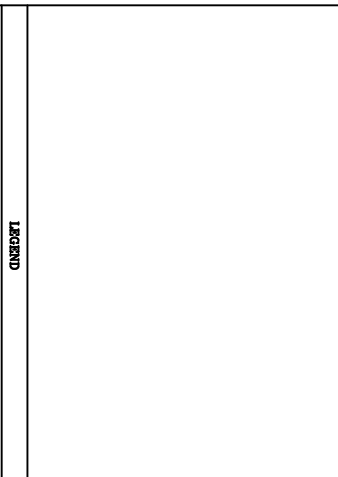
**V-2102A  
2ND STAGE GAS COMPRESSOR SUCTION**

**DRUM TRAIN #A**  
 DIMENSIONS (D X T-L-T1) : 900 X 3000 mm  
 DESIGN TEMP : 115.4 °C  
 DESIGN PRESS : 17/22 barg  
 TRM LINE : TRM-V-2102-0510-CS90-NP  
 TRM LINE : TRM-V-2102-0508-CN05-PT  
 TRM LINE : TRM-V-2102-0508-CN05-ET



**NOTES**

- 1- DELETED.
- 2- DELETED.
- 3- DELETED.
- 4- DELETED.
- 5- ESD LEVEL 2 FOR HH AND 3 FOR LOW LOW LIQUID LEVEL.
- 6- DISCREPANCY CHECK BETWEEN LT-2132A AND LT-2131A TO BE CHECKED VIA DCS.
- 7-PARTIAL STROKE DRENCE TO BE CONSIDERED FOR ALL ESD'S ACTIVATED BY ESD 10.



REV#	DATE	DESCRIPTION	BY	DATE	REV#	DATE	DESCRIPTION	BY	DATE
DO6	APR.2023	APC	MANOUE	MANOUE	** **				
DO5	DEC.2022	BYA	MANOUE	MANOUE	** **				
DO4	AUG.2022	BYA	MANOUE	MANOUE	** **				
DO3	JUN.2022	BYA	MANOUE	MANOUE	** **				
DO2	MAR.2022	BYA	MANOUE	MANOUE	** **				
DO1	JAN.2022	BYA	MANOUE	MANOUE	** **				
DO0	SEP.2021	IPC	MANOUE	MANOUE	** **				

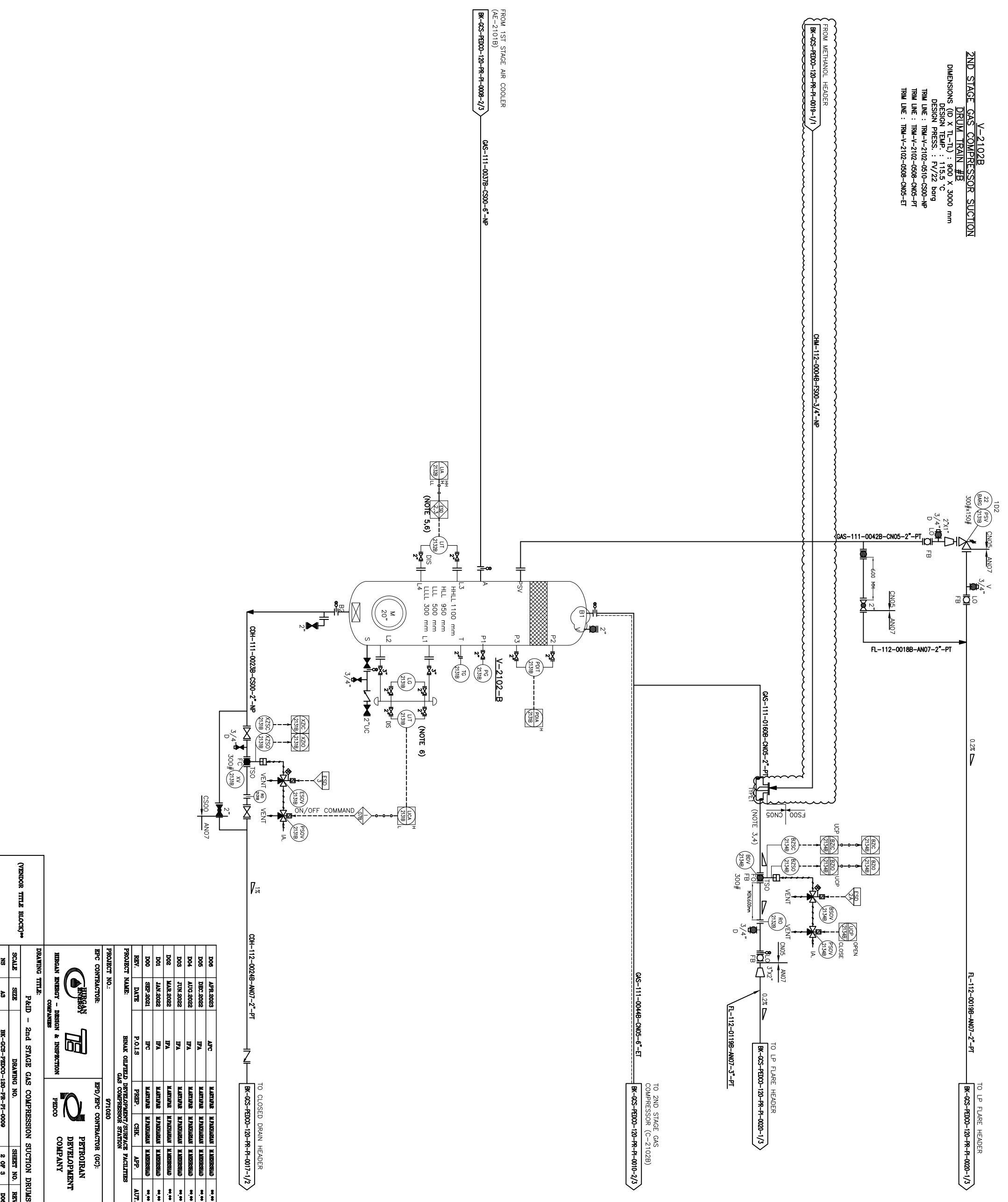
EPC CONTRACTOR:		EPC CONTRACTOR (GC):	
SIRGAN ENERGY - DESIGN & INSPECTION COMPANIES		PETROBRAN DEVELOPMENT COMPANY	
DRAWING TITLE: P&ID - 2nd STAGE GAS COMPRESSION SUCTION DRUMS		APPROVED FOR CONSTRUCTION BY: DATE:	
SCALE: AS	DRAWING NO. BK-GS-FB00-120-RR-P-009	SHEET NO. 1 OF 3	REVISION SHEET 1 OF 3
NS		DO6	DO6

NO CONSTRUCTION PERMITTED UNLESS DRAWING APPROVED

THE ORIGINAL AND ALL COPIES OF THIS DRAWING TOGETHER WITH THE COPYRIGHT THEREON ARE THE SOLE PROPERTY OF N.I.S.O.C./ FIELDS

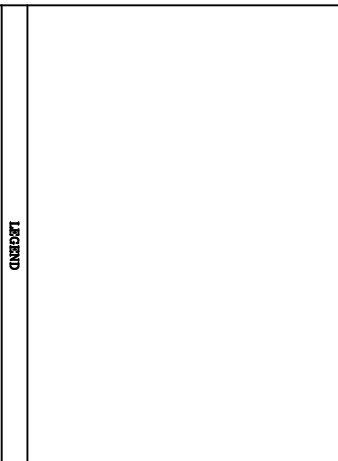
**V-2102B  
2ND STAGE GAS COMPRESSOR SUCTION**

**DRUM TRAIN #B**  
 DIMENSIONS (D X T L-TL) : 900 X 3000 mm  
 DESIGN TEMP. : 115.5 °C  
 DESIGN PRESS. : 17/22 barg  
 TRIM LINE : TRM-V-2102-0510-CS00-NP  
 TRIM LINE : TRM-V-2102-0508-CN05-PT  
 TRIM LINE : TRM-V-2102-0508-CN05-ET



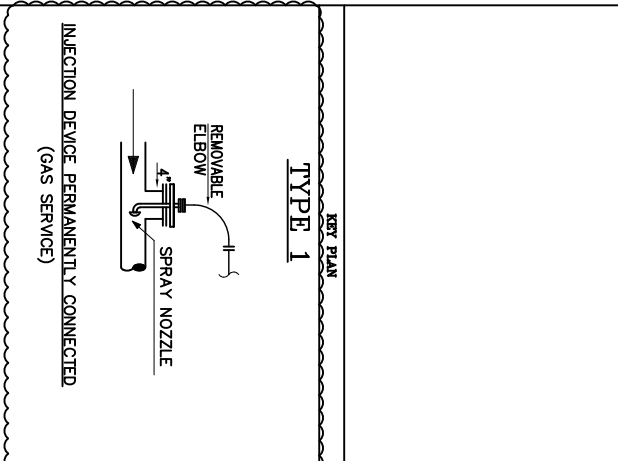
**NOTES**

- 1- DELETED.
- 2- DELETED.
- 3- DELETED.
- 4- DELETED.
- 5- ESD LEVEL 2 FOR HH AND 3 FOR LOW LOW LIQUID LEVEL.
- 6- DISCREPANCY CHECK BETWEEN LT-2132A AND LT-2131A TO BE CHECKED VIA DCS.
- 7-PARTIAL STROKE ORDNCE TO BE CONSIDERED FOR ALL ESDVS ACTIVATED BY ESD 10.



**Process Flow Diagram**  
 Symbol & Legend For PFD and P&ID

DRG. No.	BK-GS-FBDO-120-RR-P-0001
DRG. No.	BK-GS-FBDO-120-RR-P-0001

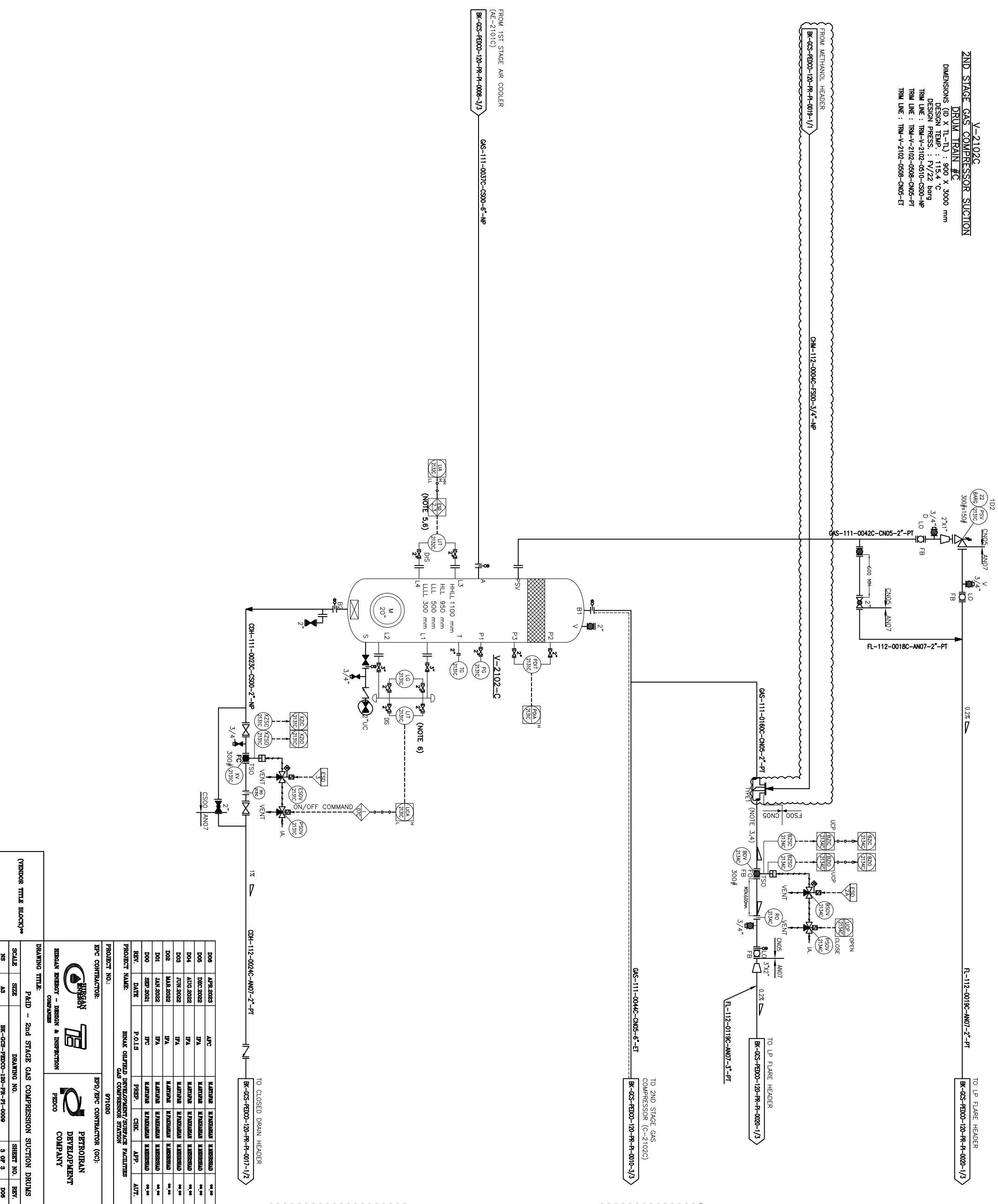


REV.	DESCRIPTION	BY	DATE	CHK.	DATE	APP.	AUT.
001	ISSUED FOR CONSTRUCTION	...	...	...	...	...	...
002	...	...	...	...	...	...	...
003	...	...	...	...	...	...	...
004	...	...	...	...	...	...	...
005	...	...	...	...	...	...	...
006	...	...	...	...	...	...	...
007	...	...	...	...	...	...	...
008	...	...	...	...	...	...	...
009	...	...	...	...	...	...	...
010	...	...	...	...	...	...	...

<b>PROJECT NAME:</b> BINAQ OILFIELD DEVELOPMENT/SURFACE FACILITIES GAS COMPRESSOR STATION	
<b>PROJECT NO.:</b> 071020	
<b>EPC CONTRACTOR:</b> HIRSHAN ENERGY - DESIGN & INSPECTION COMPANIES	<b>EPD/EPC CONTRACTOR (GC):</b> PETROBRAN DEVELOPMENT COMPANY
<b>DRAWING TITLE:</b> P&ID - 2nd STAGE GAS COMPRESSION SUCTION DRUMS	
<b>SCALE:</b> AS	<b>DRIVING NO.:</b> BK-GS-FBDO-120-RR-P-0009
<b>NS:</b> 2 OF 3	<b>REV.:</b> 006

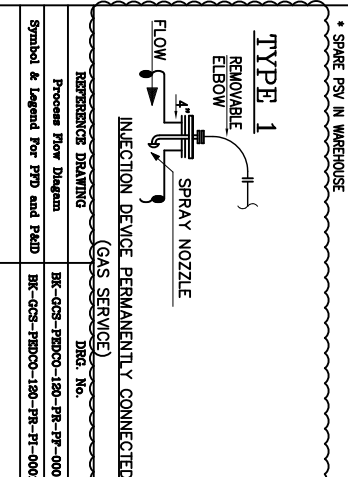
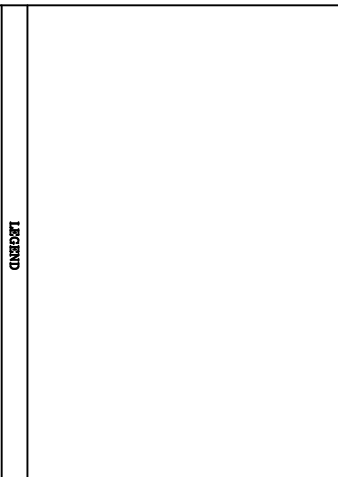
<b>DATE:</b> 2024-07-14	<b>SCALE:</b> AS	<b>DRIVING NO.:</b> BK-GS-FBDO-120-RR-P-0009	<b>REV.:</b> 006
<b>APPROVED FOR CONSTRUCTION:</b>	<b>BY:</b>	<b>DATE:</b>	<b>SHEET REVISION:</b>
<b>NO CONSTRUCTION PERMITTED UNLESS DRAWING APPROVED</b>	<b>GAS COMPRESSOR STATION</b>	<b>DRAWING BY:</b>	<b>CHECKED BY:</b>

V-2102C  
**2ND STAGE GAS COMPRESSOR SUCTION**  
 DRUM TRAIN #C  
 DIMENSIONS (D X T-L-TI) : 900 X 3000 mm  
 DESIGN TEMP : 115.4 °C  
 DESIGN PRESS : 17.22 barg  
 TRIM LINE : TRM-V-2102-0510-C500-AP  
 TRIM LINE : TRM-V-2102-0908-CN05-PT  
 TRIM LINE : TRM-V-2102-0908-CN05-ET



**NOTES**

- 1- DELETED.
- 2- DELETED.
- 3- DELETED.
- 4- DELETED.
- 5- ESD LEVEL 2 FOR HH AND 3 FOR LOW LOW LIQUID LEVEL.
- 6- DISCREPANCY CHECK BETWEEN LT-2132A AND LT-2131A TO BE CHECKED VIA DCS.
- 7-PARTIAL STROKE DRENCE TO BE CONSIDERED FOR ALL ESDVS ACTIVATED BY ESD 10.



REV.	DATE	DESCRIPTION	BY	DATE	REV.	DATE	DESCRIPTION	BY	DATE
***	*****	*****	***	*****	***	*****	*****	***	*****

THE ORIGINAL AND ALL COPIES OF THIS DRAWING TOGETHER WITH THE COPYRIGHT THEREIN ARE THE SOLE PROPERTY OF NIS.O.C./ FIELDS

**PROJECT NO.:** 971090

**PROJECT NAME:** BINAQ OILFIELD DEVELOPMENT/SURFACE FACILITIES GAS COMPRESSOR STATION

**EPC CONTRACTOR:** HIRSHAN ENERGY - DESIGN & INSPECTION

**EPD/EPC CONTRACTOR (GC):** PETROBRAN DEVELOPMENT COMPANY

**DRIVING TITLE:** P&ID - 2nd STAGE GAS COMPRESSION SUCTION DRUMS

**SCALE:** AS

**SHEET NO.:** 3 OF 3

**REV.:** 006

**APPROVED FOR CONSTRUCTION BY:** DATE:

**CHECKED BY:** DATE:

FROM 1ST STAGE AIR COOLER  
 (AE-2101C)  
 BK-025-FB00-120-RR-P-000-3/3  
 GAS-111-0037C-C500-6-AP  
 V-2102-C  
 CHM-112-0044C-F500-3/4-AP  
 BK-025-FB00-120-RR-P-000-1/3