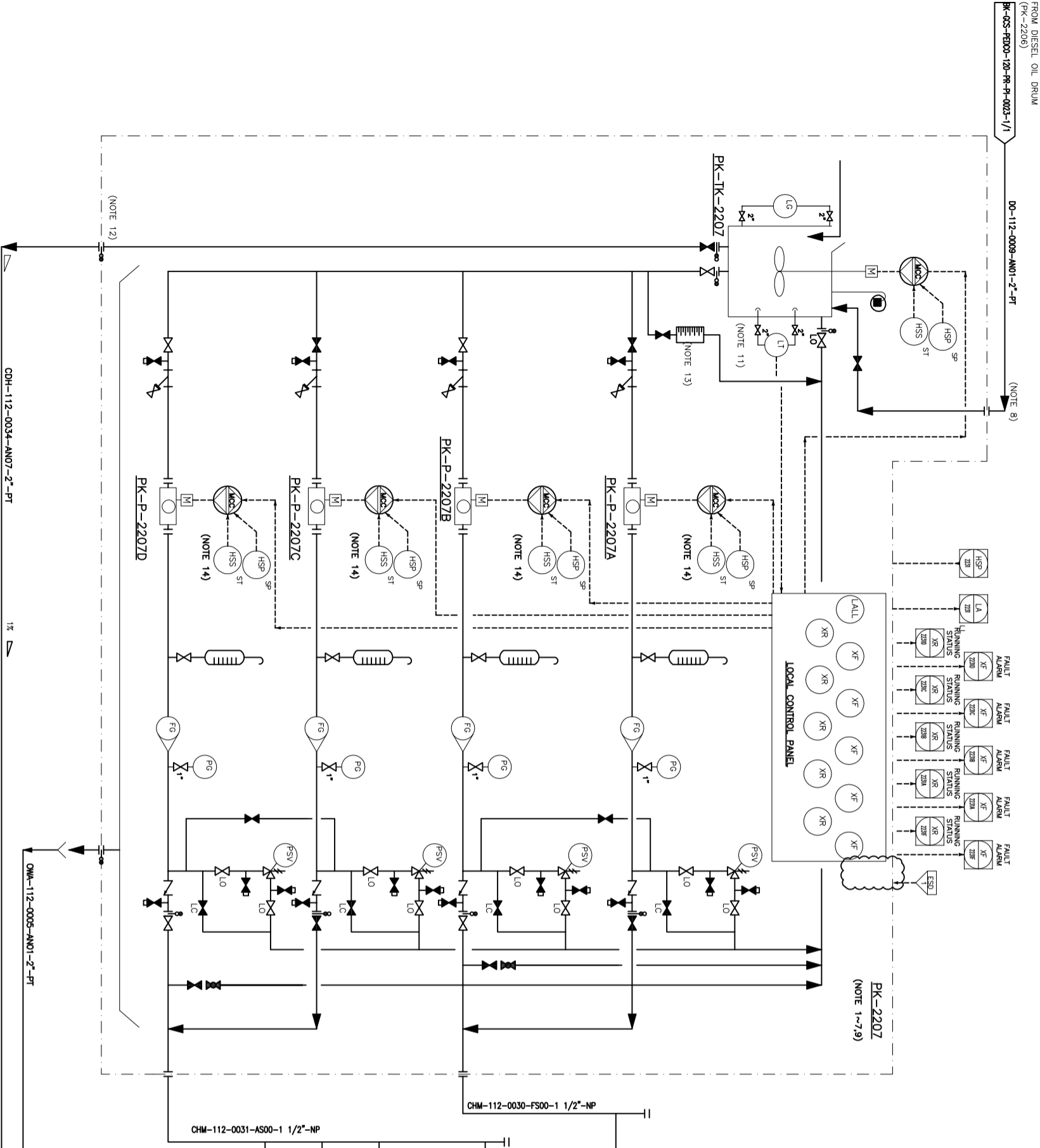


PK-TK-2207
CORROSION INHIBITOR TANK
CONTROL PANEL TYPE 3
 DESIGN TEMP : 85 °C
 DESIGN PRESS : ATM + FULF OF WATER
 TANK NOMINAL CAPACITY : 1.2m³



PK-P-2207 A/B/C/D (NOTE 1)
CORROSION INHIBITOR PACKAGE PUMP
 RATED CAPACITY (HIGH PRESS) : 2.21 L/H
 INJECTION PRESS. (HIGH) : 62 BAR
 RATED CAPACITY (LOW PRESS) : 3.06 L/H
 INJECTION PRESS. (LOW) : 9 BAR
 DESIGN TEMP. : 55 °C

- NOTES**
- 1-THE GIVEN VALUES FOR INJECTION CAPACITY OF ALL INJECTION PACKAGES ARE PRELIMINARY AND SHALL BE FINALIZED BY VENDOR.
 - 2- PIPING SHOULD CONSIDER VENT CONNECTION IN HIGH POINT AND DRAIN CONNECTION IN LOW POINTS.
 - 3- VERTICALLY MOUNTED, FLOW FROM BOTTOM TO TOP (FOR ROTAMETER).
 - 4- ALL VALVES IN CHEMICAL PACKAGES SHALL BE LOCKABLE TYPE.
 - 5- CHEMICAL RATES AND INJECTION POINTS WILL BE FINALIZED AFTER RECEIVING VENDOR DATA.
 - 6-DELETED.
 - 7- LOCAL MCC (MOTOR CONTROL CENTER) OR PCC (POWER DISTRIBUTION PANEL) IS IN VENDOR SCOPE OF WORK.
 - 8- FUEL OIL LINE REQUIREMENT (CONNECTION, FLANGE, ...) SHALL BE CONSIDERED BY CHEMICAL VENDOR.
 - 9- BACK PRESSURE VALVE SHOULD BE CONSIDERED IN DISCHARGE HEADER BY VENDOR.
 - 10- DELETED.
 - 11- REQUIRED LOGIC FOR LALL TO BE IMPLEMENTED BY LOP SUCH AS PUMP AND MIXER SHUTDOWN (BY VENDOR).
 - 12- CHEMICAL SPILLAGE SHALL BE ROUTED TO CLOSED DRAIN.
 - 13- CALIBRATION POT TO BE REMOVABLE FROM STROCK ADJUSTMENT MANUAL DEVICE AND TO BE LOCATED CLOSE TO SLECTION BLOCK VALVE.
 - 14-MCC AND START/STOP PUSH BOTTOMTO BE CONSIDERED BY VENDOR ON LOP.
 - 15-PARTIAL STROCK DEVICE TO BE CONSIDERED FOR ALL ESD'S ACTIVATED BY ESD 1.0.

GENERAL NOTE

LEGEND

REFERENCE DRAWING

Utility Flow Diagram	DRG. No.
BK-QCS-FED00-180-RR-PI-0001	BK-QCS-FED00-180-RR-PI-0001
Symbol & Legend For PFD & P&ID	BK-QCS-FED00-180-RR-PI-0001

KEY PLAN

NO	DATE	BY	CHKD	APP	REV.	DESCRIPTION
006	APR 2023	AYC			** **	
005	DEC 2022	JYA			** **	
004	AUG 2022	JYA			** **	
003	JUL 2022	JYA			** **	
002	MAR 2022	JYA			** **	
001	JAN 2022	JYA			** **	
000	OCT 2021	JYC			** **	

PROJECT NAME: **BINAK OILFIELD DEVELOPMENT/SURFACE FACILITIES GAS COMPRESSOR STATION**

PROJECT NO.: **PT1080**

EPD/PEC CONTRACTOR (GC):
PETROBRAS DEVELOPMENT COMPANY

DRIVING TITLE: PAID - CORROSION INHIBITOR PACKAGE

SCALE	SIZE	DRAWING NO.	SHEET NO.	REV.	NO
AS	A3	BK-QCS-FED00-180-RR-PI-0016	1 OF 1	006	NS

NO CONSTRUCTION PERMITTED UNLESS DRAWING APPROVED

APPROVED FOR CONSTRUCTION	BY:	DATE:
BOG-076-016	F	2
BOG-076-016	A	4
BOG-076-016	1 OF 1	006