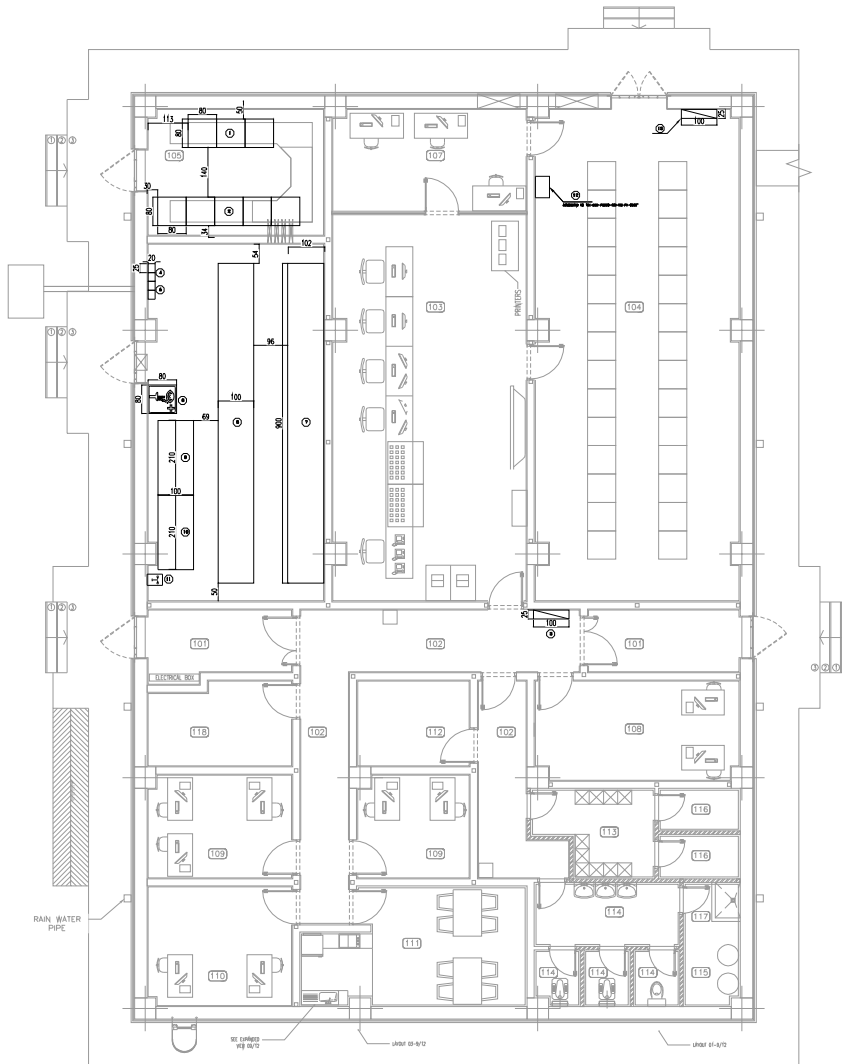


D02



TAG NAME	NET AREA
101	AIR LOCK 16 sq.m
102	CORRIDOR 33 sq.m
103	CONTROL ROOM 59 sq.m
104	AUXILIARY ROOM 80 sq.m
105	UPS ROOM 18 sq.m
106	BATTERY ROOM 50 sq.m
107	ENGINEERING ROOM 16 sq.m
108	INSTRUMENT ROOM 16 sq.m
109	OFFICE 21 sq.m
110	IN-CHARGE + ARCHIVE 14 sq.m
111	PANTRY + DINING ROOM 20 sq.m
112	LOCKER 8 sq.m
113	WC 13 sq.m
114	BOILERS 4 sq.m
115	BATHROOM 6 sq.m
117	JANITOR CLOSET 2 sq.m
118	HVAC CONTROL ROOM 9 sq.m

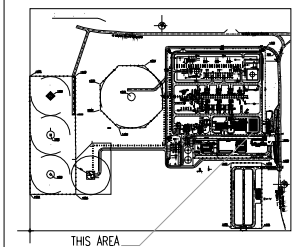
CONTROL ROOM EQUIPMENT		
ITEM	EQPT. NO.	DESCRIPTION
①	DC UPS	84 VDC UPS
②	AC UPS	110 VAC UPS
③	DCS-400-EDP-CRM	CONTROL ROOM EMERGENCY DISTRIBUTION PANEL
④	FW	POWER BOX 84 VDC
⑤	FW	POWER BOX 110 VAC
⑥	BYE BASH	BYSTAN BYE/CHARGER
⑦	BACK 1	110 VAC BATTERY BANK BACK 1
⑧	BACK 2	110 VAC BATTERY BANK BACK 2
⑨	BACK 3	84 VDC BATTERY BANK BACK 3
⑩	BACK 4	84 VDC BATTERY BANK BACK 4
⑪	BE FAN	BE DELIVERY FAN
⑫	EDP/ACF	INTERMEDIATE/ACIAL DISTRIBUTION FRAME
⑬	NON UPS	DCS-400-NON UPS

**NOTES**  
 1- ALL DIMENSIONS ARE IN "cm"  
 2- "DDP" IS AS BELOW.  
 3- ALL INFORMATION DATA, WEIGHTS AND DIMENSIONS SHOWN IN THE DRAWING SHALL BE VERIFIED AND FINALIZED ACCORDING TO VENDOR DOCUMENTS.

**LEGEND**

REFERENCE DRAWING	DRG. No.
ARCHITECTURAL DETAIL DRAWING FOR CONTROL BUILDING	BK-023-PIEDCO-120-AR-DR-0001
CALCULATION NOTE FOR UPS SYSTEM	BK-023-PIEDCO-120-EL-CN-0004
CALCULATION NOTE FOR DC CHARGER SYSTEM	BK-023-PIEDCO-120-EL-CN-0005

**KEY PLAN**



REV.	DATE	P.O.I.F	PREP.	CHK.	APP.	AUT.	DESCRIPTION	BY	DATE	BY	DATE
D02	APR.2023	IPN	ALHABIAN	ALJABIRAN	ALJABIRAN	***	*****	REV. ENG.	REV. ENG.	REV. ENG.	REV. ENG.
D01	OCT.2022	IPN	ALHABIAN	ALJABIRAN	ALJABIRAN	***	*****	REV. ENG.	REV. ENG.	REV. ENG.	REV. ENG.
DDO	MAY.2022	IPC	ALHABIAN	ALJABIRAN	ALJABIRAN	***	*****	REV. ENG.	REV. ENG.	REV. ENG.	REV. ENG.

PROJECT NAME: BINAK OILFIELD DEVELOPMENT/SURFACE FACILITIES GAS COMPRESSOR STATION

PROJECT NO.: 971020

EPC CONTRACTOR: IRISAN ENERGY DESIGN & INSPECTION COMPANIES

EPD/EPC CONTRACTOR (GO): PETROIRAN DEVELOPMENT COMPANY

BINAK OILFIELD DEVELOPMENT SURFACE FACILITIES GAS COMPRESSOR STATION

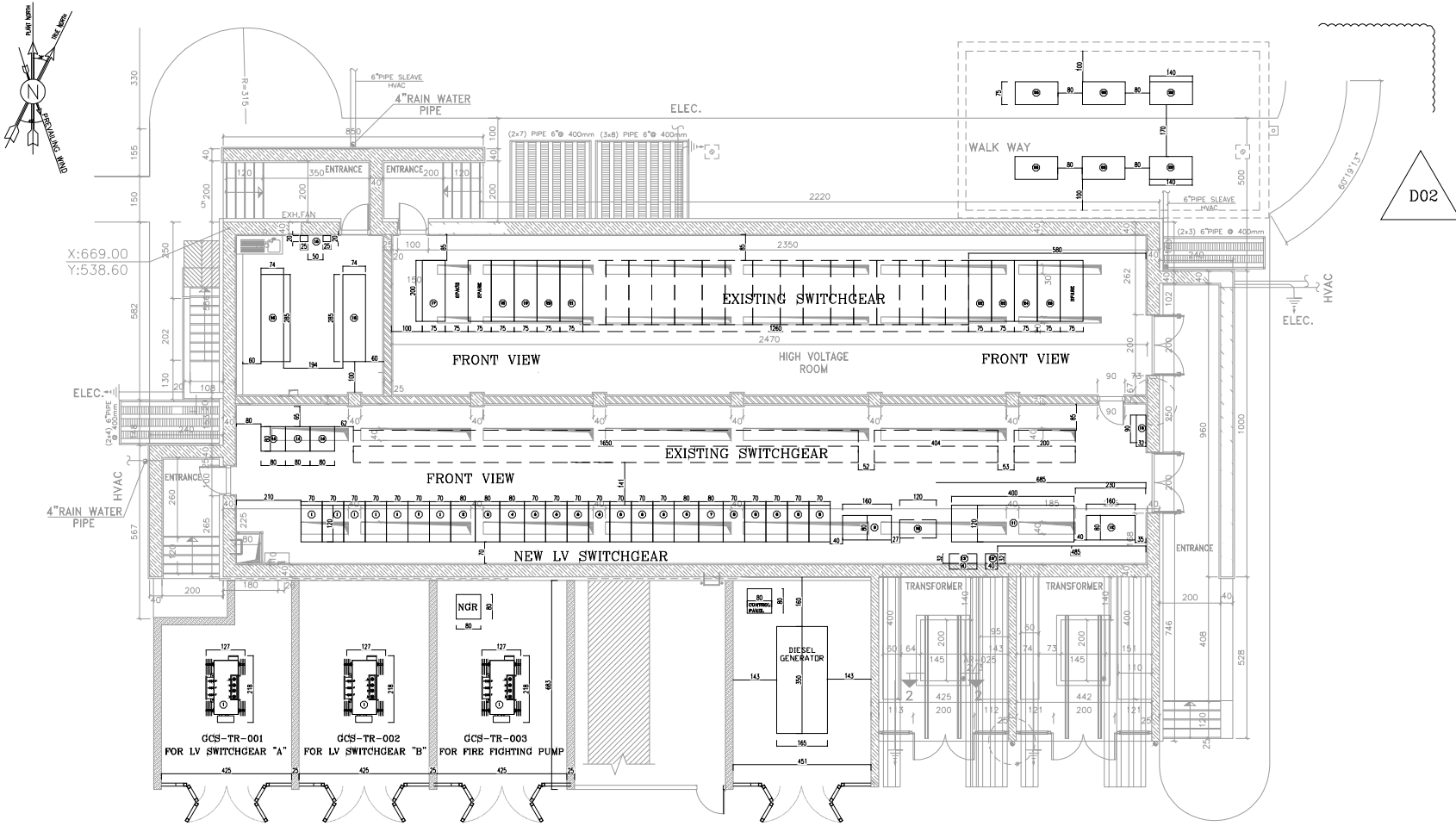
DATE: SCALE: DRAWING BY: CHECKED BY: PROJECT ENG.

DRAWING TITLE: ELECTRICAL EQUIPMENT ARRANGEMENT LAYOUT FOR BUILDING

NO CONSTRUCTION PERMITTED UNLESS DRAWING APPROVED

APPROVED FOR CONSTRUCTION BY: DATE:

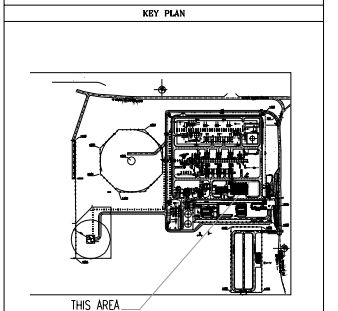
SCALE	DRWING NO.	SHEET NO.	REV.	BUDGET REF.	LOCATION	SIZE	CLASS	SERIAL NO.	SHEET	REVISION
N/A	A2	BK-023-PIEDCO-120-EL-PY-0008	02 OF 03	D02	023-079-0144	F	2	P	709005	02 OF 03 D02



- NOTES**
- 1- ALL DIMENSION ARE IN "mm"
  - 2- ALL INFORMATION DATA, WEIGHTS AND DIMENSIONS SHOWN IN THIS DRAWING SHALL BE VERIFIED AND FINALIZED ACCORDING TO VENDOR DOCUMENTS.
  - 3- IN LV ROOM:
    - OUTGOING NO 01-08 IS ON LV SWITCHGEAR "A".
    - OUTGOING NO 07-12 IS ON LV SWITCHGEAR "D".
    - OUTGOING NO 13-16 IS ON LV SWITCHGEAR "C".
  - 4- EXISTING DC CHARGER SHALL BE REPLACED BY NEW DC CHARGER.
  - 5- EXISTING RFP PANEL SHALL BE MOVED TO NEW LOCATION BESIDE NEW RFP.
  - 6- IN LV ROOM EXISTING BY CAPACITOR BANK SHALL BE MOVED TO NEW CAPACITOR ROOM BEHIND LV ROOM.
  - 7- SINCE THERE IS NOT ENOUGH SPACE IN EXISTING LV ROOM, THEREFORE NEW LV SWITCHGEAR HAS BEEN CONSIDERED REAR ACCESS.
  - 8- ACCORDING TO NOTE, LV SWITCHGEAR REAR ACCESS, THEREFORE OUTGOING IS 0.7M IN LENGTH & INCHING IS 0.8M. THE DEPTH OF SWITCHGEAR IS 1.2M.
  - 9- THERE ARE 3 NORMAL LV PANEL FOR GAS COMPRESSOR HANDED "NDP-2101A", "NDP-2101B" & "NDP-2101C". THEY SHALL BE PLACED IN LV ROOM.
  - 10- SINCE OPENING FOR ACCESS TO CABLE TRAY, THEREFORE ANY WIRING IS REQUIRED, OPENING SHALL BE EXTENDED.

**LEGEND**

REFERENCE DRAWING	DRG. No.
ARCHITECTURAL GENERAL DRAWING FOR EXTENSION OF EXISTING BUILDING	BK-023-PI200-120-EL-AR-0008
ELECTRICAL OVERALL SINGLE LINE DIAGRAM	BK-023-PI200-120-EL-EL-0004
CALCULATION NOTE FOR DC CHARGER SYSTEM	BK-023-PI200-120-EL-CN-0006



**SWITCHGEAR ROOM EQUIPMENT**

ITEM	EQPT. NO.	DESCRIPTION
①	OUT 1, OUT 2, OUT 3, OUT 4, OUT 5, OUT 6, OUT 7	OUTGOING FOR NEW LV SWITCHGEAR A
②	INC A	INCOMING FOR NEW LV SWITCHGEAR A
③	COUPLER	COUPLER INC
④	INC B	INCOMING FOR NEW LV SWITCHGEAR B
⑤	OUT 8, OUT 9, OUT 10, OUT 11, OUT 12, OUT 13, OUT 14	OUTGOING FOR NEW LV SWITCHGEAR B
⑥	COUPLER	COUPLER INC
⑦	INC C	INCOMING FOR NEW LV SWITCHGEAR C
⑧	OUT 15, OUT 16, OUT 17, OUT 18, OUT 19	OUTGOING FOR NEW LV SWITCHGEAR C
⑨	INC D	INCOMING FOR NEW LV SWITCHGEAR C
⑩	NDP 1	NDP LV PANEL
⑪	NDP 2	NDP LV PANEL
⑫	NDP 3	NDP LV PANEL
⑬	NDP 4	NDP LV PANEL
⑭	NDP 5	NDP LV PANEL
⑮	NDP 6	NDP LV PANEL
⑯	NDP 7	NDP LV PANEL
⑰	NDP 8	NDP LV PANEL
⑱	NDP 9	NDP LV PANEL
⑲	NDP 10	NDP LV PANEL
⑳	NDP 11	NDP LV PANEL
㉑	NDP 12	NDP LV PANEL
㉒	NDP 13	NDP LV PANEL
㉓	NDP 14	NDP LV PANEL
㉔	NDP 15	NDP LV PANEL
㉕	NDP 16	NDP LV PANEL
㉖	NDP 17	NDP LV PANEL
㉗	NDP 18	NDP LV PANEL
㉘	NDP 19	NDP LV PANEL
㉙	NDP 20	NDP LV PANEL
㉚	NDP 21	NDP LV PANEL
㉛	NDP 22	NDP LV PANEL
㉜	NDP 23	NDP LV PANEL
㉝	NDP 24	NDP LV PANEL
㉞	NDP 25	NDP LV PANEL
㉟	NDP 26	NDP LV PANEL
㊱	NDP 27	NDP LV PANEL
㊲	NDP 28	NDP LV PANEL
㊳	NDP 29	NDP LV PANEL
㊴	NDP 30	NDP LV PANEL
㊵	NDP 31	NDP LV PANEL
㊶	NDP 32	NDP LV PANEL
㊷	NDP 33	NDP LV PANEL
㊸	NDP 34	NDP LV PANEL
㊹	NDP 35	NDP LV PANEL
㊺	NDP 36	NDP LV PANEL
㊻	NDP 37	NDP LV PANEL
㊼	NDP 38	NDP LV PANEL
㊽	NDP 39	NDP LV PANEL
㊾	NDP 40	NDP LV PANEL
㊿	NDP 41	NDP LV PANEL

REV.	DATE	DESCRIPTION	BY	DATE	BY	DATE
D02	APR.2023	IPN	M. HANAFI	M. HANAFI	M. HANAFI	04.04.2023
D01	OCT.2022	IPN	M. HANAFI	M. HANAFI	M. HANAFI	01.10.2022
DDO	MAY.2022	IPC	M. HANAFI	M. HANAFI	M. HANAFI	05.05.2022

PROJECT NAME: BINAK OILFIELD DEVELOPMENT/SURFACE FACILITIES GAS COMPRESSOR STATION

PROJECT NO.: 971020

EPD/BPC CONTRACTOR (GO): PETROIRAN DEVELOPMENT COMPANY

EPD/BPC CONTRACTOR (GC): PETROIRAN DEVELOPMENT COMPANY

DRAWING TITLE: ELECTRICAL EQUIPMENT ARRANGEMENT LAYOUT FOR BUILDING

APPROVED FOR CONSTRUCTION BY: DATE:

SCALE	SIZE	DRAWING NO.	SHEET NO.	REV.	BUDGET REF.	LOCATION	CONSTR. CLASS	SERIAL NO.	DATE	REVISION
N/A	A2	BK-023-PI200-120-EL-PY-0008	D02	003-079-0144	F	2	P	700005	02 OF 03	D02

این نقشه و کلیه محتوای آن متعلق به شرکت ملی نفت ایران می باشد. کپی برداری غیر مجاز است.

THE ORIGINAL AND ALL COPIES OF THIS DRAWING TOGETHER WITH THE COPYRIGHT THEREIN ARE THE SOLE PROPERTY OF N.I.S.O.C./ FIELDS

BINAK OILFIELD DEVELOPMENT SURFACE FACILITIES GAS COMPRESSOR STATION

DATE SCALE DRAWING BY CHECKED BY PROJECT ENG.