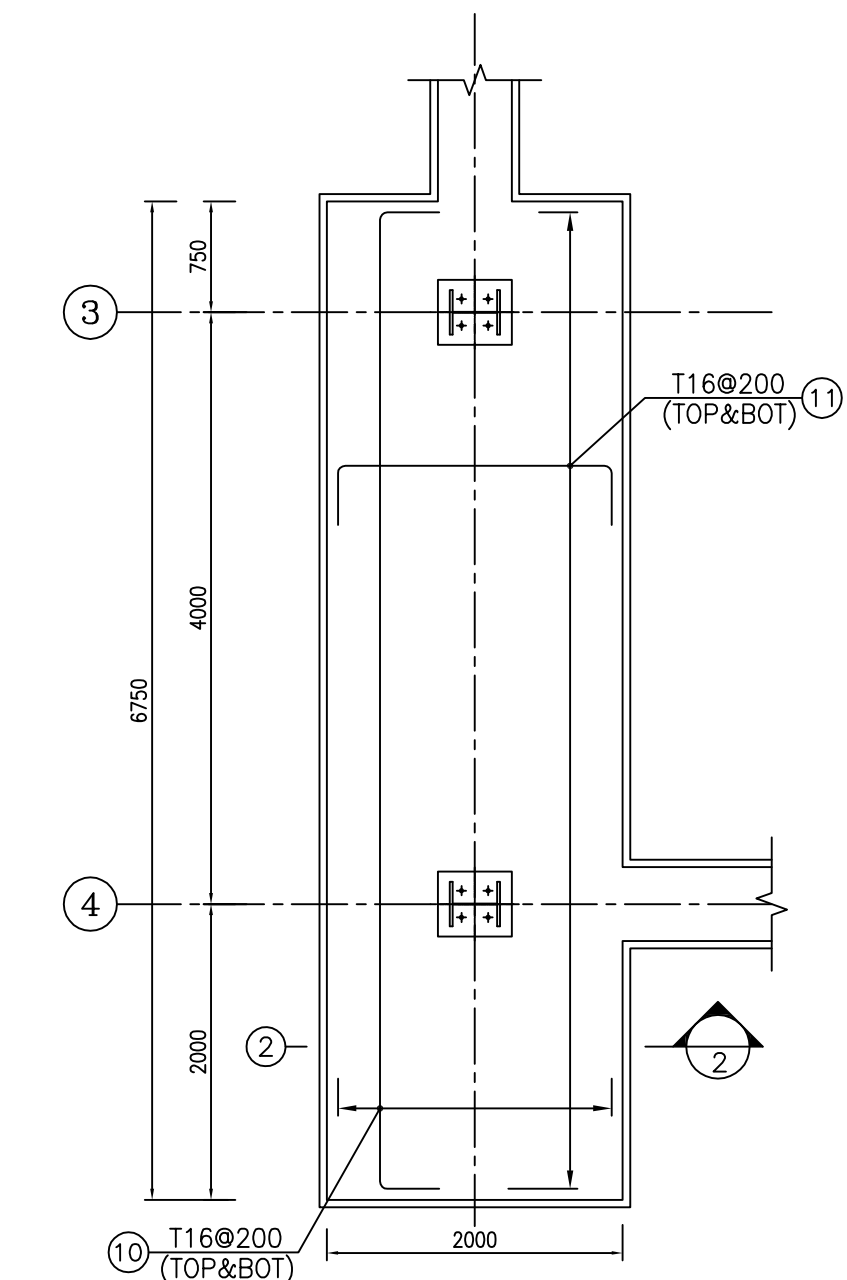
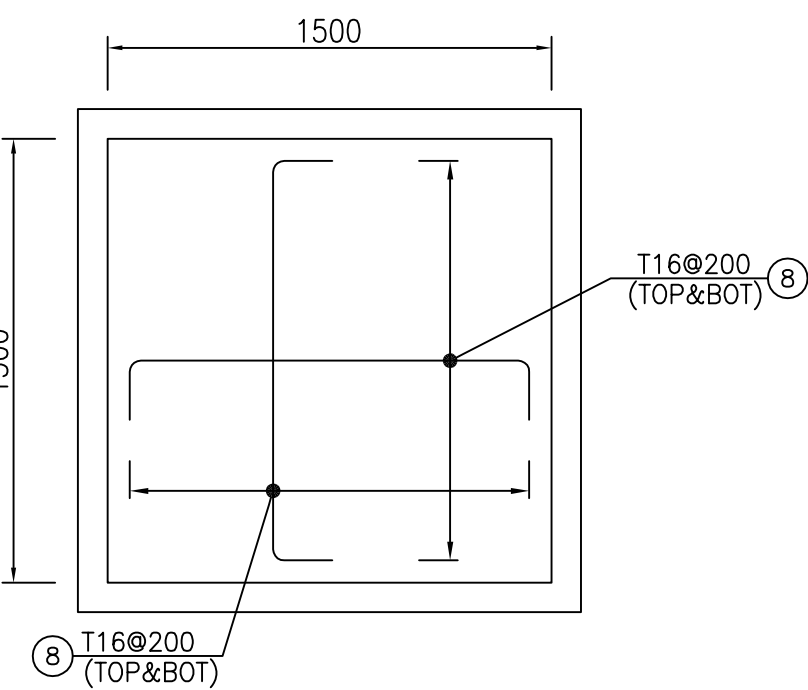


- 

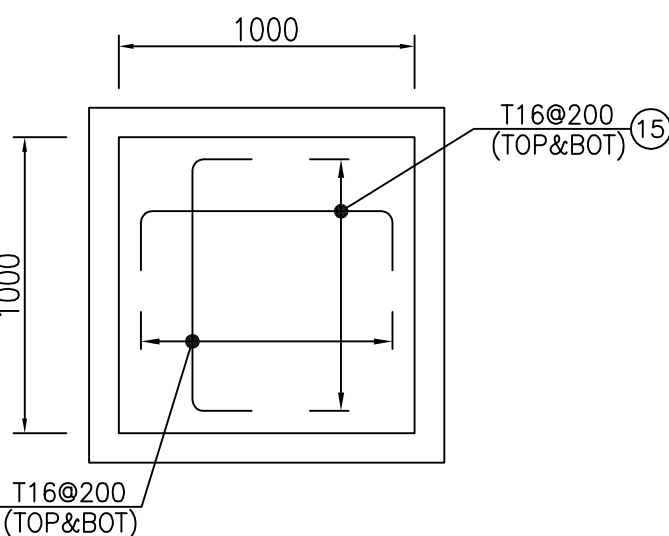
[illegible]



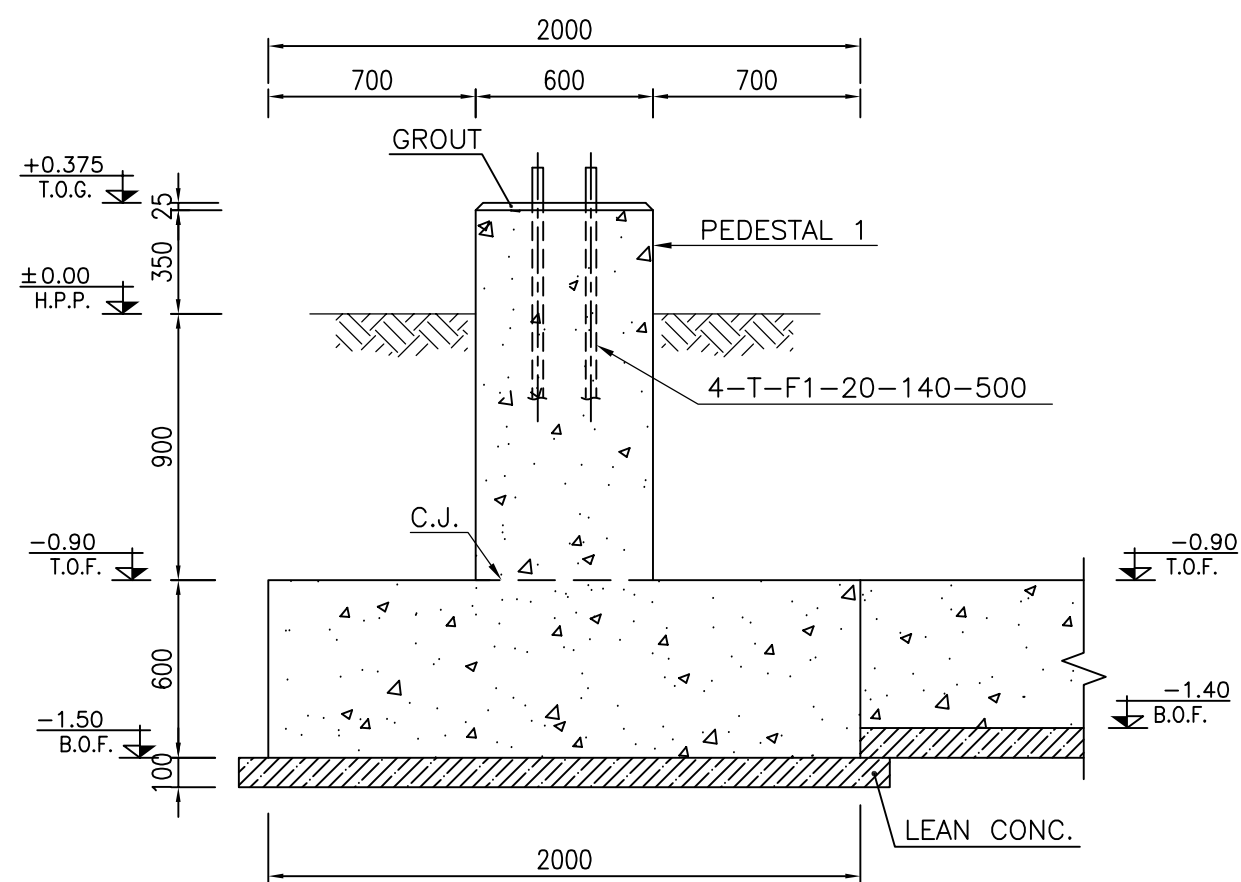
FOUNDATION FORMWORK PLAN (F1)  
REINFORCEMENT  
N=2



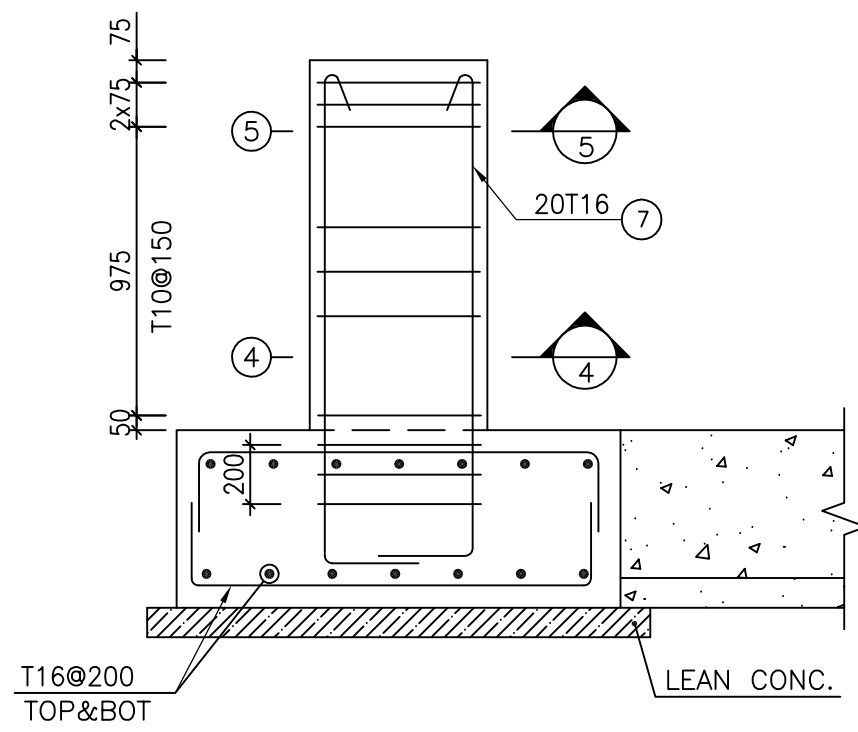
FOUNDATION FORMWORK PLAN (F2)  
REINFORCEMENT  
N=4



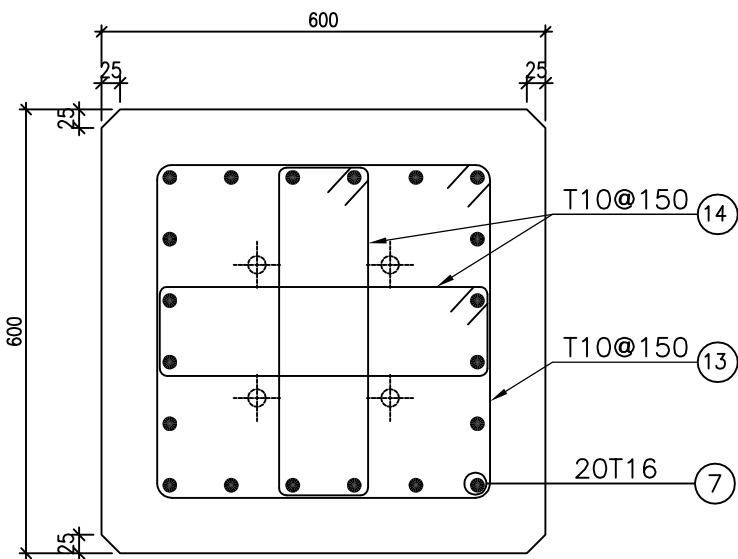
FOUNDATION FORMWORK PLAN (F3)  
REINFORCEMENT  
N=4



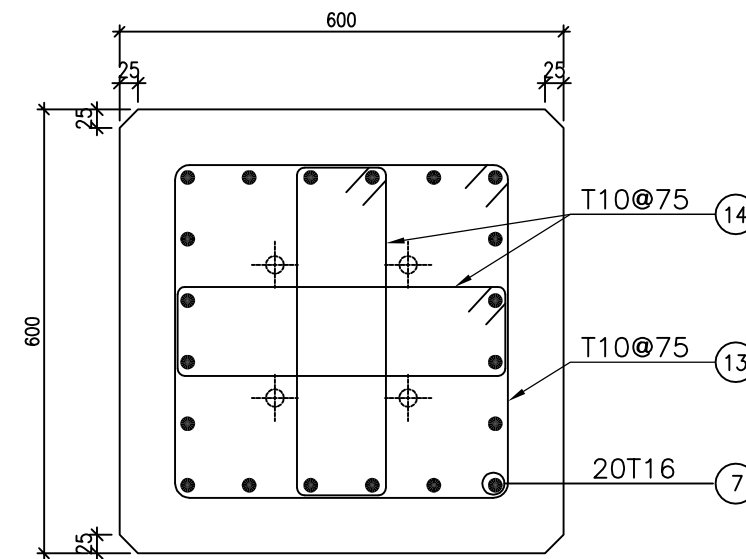
PEDESTAL TYPE 1  
FORMWORK



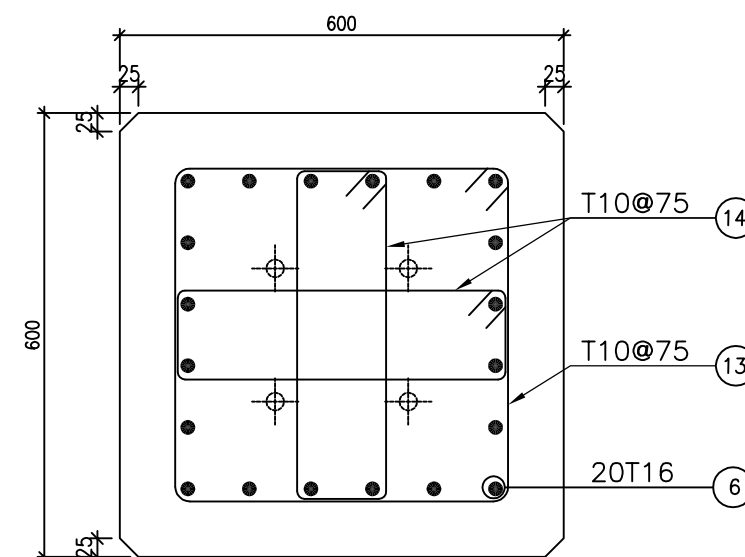
PEDESTAL TYPE 1  
REINFORCEMENT  
N=4



PEDESTAL TYPE 1  
REINFORCEMENT

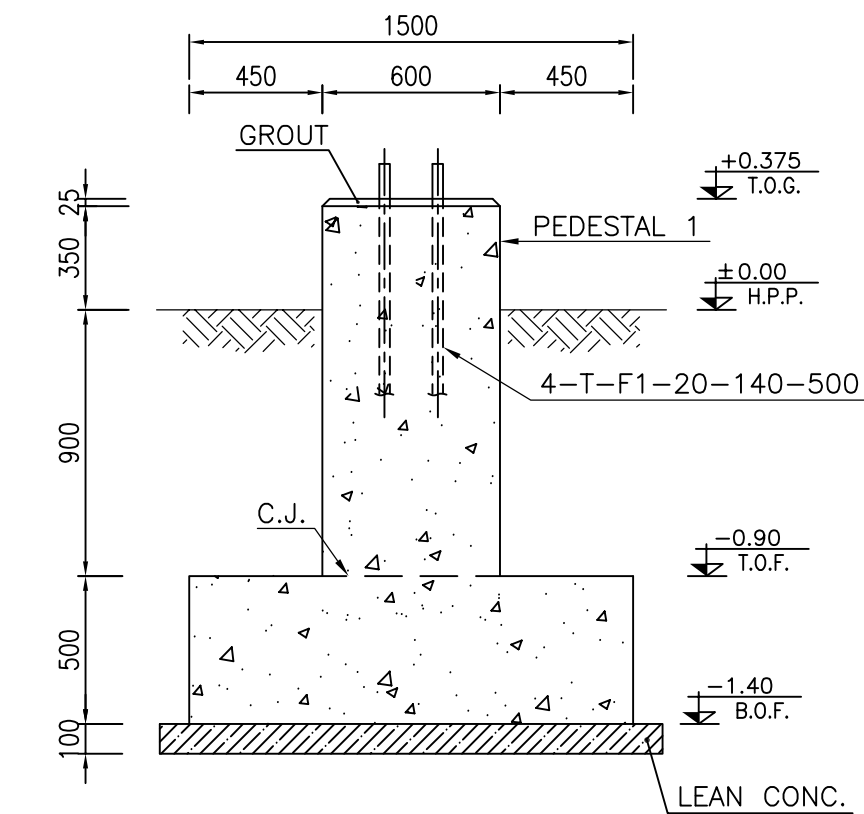


PEDESTAL TYPE 1  
REINFORCEMENT

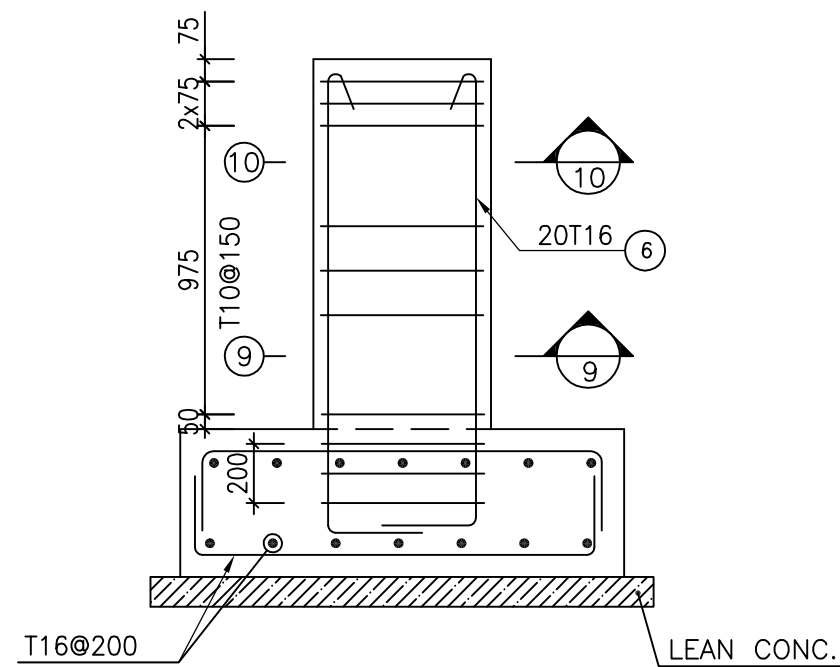


PEDESTAL TYPE 1  
REINFORCEMENT

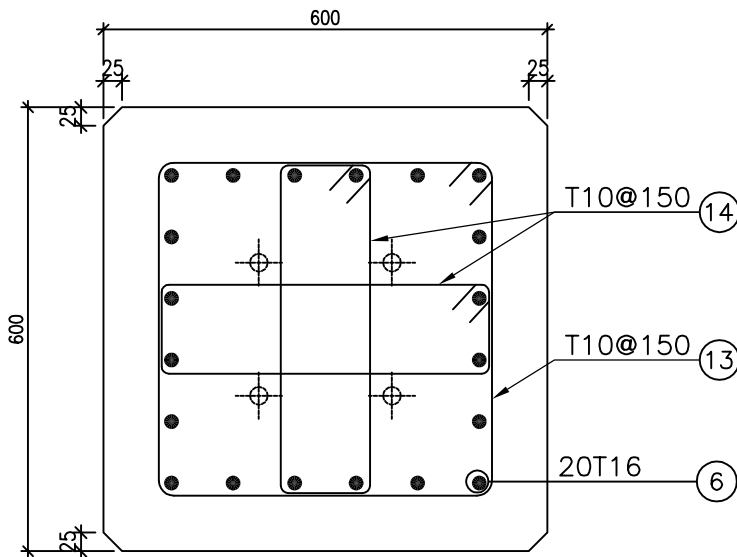
Pos	Spec.	Shape	L/A	No.	T10	T16
1	T16	250 8750	9	12		108
2	T16	250 8900	9.15	12		109.8
3	T16	250 7150	7.4	6		44.4
4	T16	250 7750	8	12		96
5	T16	250 6650	6.9	6		41.4
6	T16	250 1550	2.05	112		229.6
7	T16	250 1650	2.15	80		172
8	T16	250 1350	1.85	128		236.8
9	T10	350 350 100	1.6	222	355.2	
10	T16	250 6600	7.1	44		312.4
11	T16	250 1850	2.35	140		329
12	T10	250 250 100	1.2	52	62.4	
13	T10	450 450 100	2	104	208	
14	T10	450 120 100	1.34	80	107.2	
15	T16	250 850	1.35	96		129.6
TOTAL LENGTH OR AREA (m/m2)					732.8	1809
UNIT WEIGHT (Kg)					.617	1.578
WEIGHT (Kg)					452.14	2854.6
GRAND TOTAL (Kg)					3307	Kg.



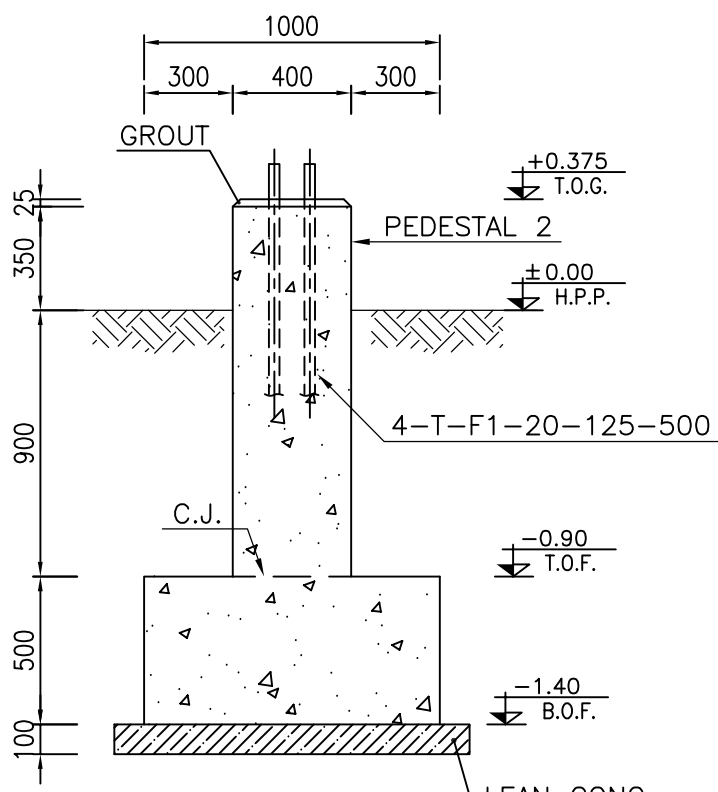
PEDESTAL TYPE 1  
FORMWORK



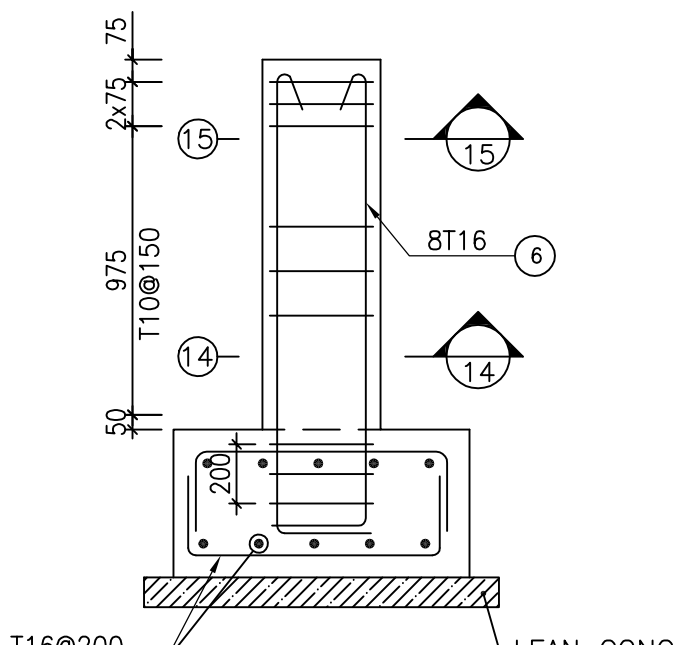
PEDESTAL TYPE 1  
REINFORCEMENT  
N=4



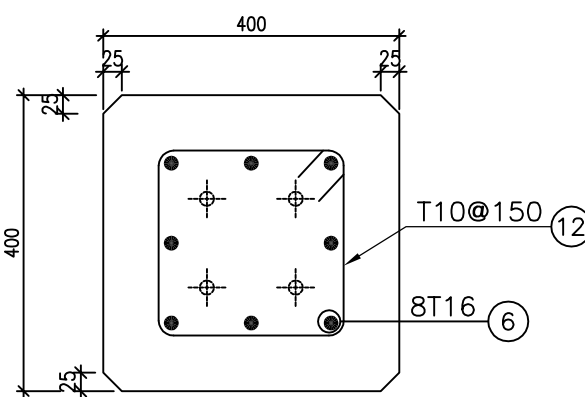
PEDESTAL TYPE 1  
REINFORCEMENT



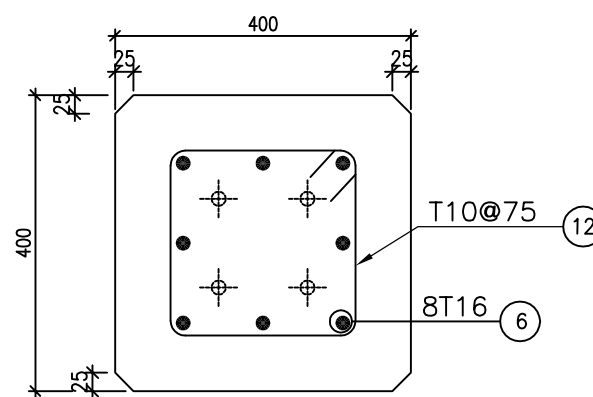
PEDESTAL TYPE 2  
FORMWORK



PEDESTAL TYPE 2  
REINFORCEMENT  
N=4



PEDESTAL TYPE 2  
REINFORCEMENT



PEDESTAL TYPE 2  
REINFORCEMENT

#### NOTES

- 1) ALL ELEVATIONS AND COORDINATES ARE IN "m" AND DIMENSIONS ARE IN "mm" UNLESS OTHERWISE NOTED.
- 2) ALL DIMENSIONS AND ELEVATIONS SHALL BE CHECKED BY THE CONTRACTOR PRIOR TO CONSTRUCTION.
- 3) ACCORDING TO THE SPECIFICATION OF CONCRETE WORKS:  
"BK-GNRL-PEDCO-000-ST-SP-0001" 28 DAYS CHARACTERISTIC  
COMPRESSIVE STRENGTH OF MAIN CONCRETE IS 30 MPa (ON CYLINDRICAL SPECIMEN)
- 4) ACCORDING TO THE SPECIFICATION OF CONCRETE WORKS:  
"BK-GNRL-PEDCO-000-ST-SP-0001" 28 DAYS CHARACTERISTIC  
COMPRESSIVE STRENGTH OF LEAN CONCRETE IS 15 MPa (ON CYLINDRICAL SPECIMEN)
- 5) CONCRETE COVER OVER BARS SHALL BE 75mm FOR FOUNDATION AND 50mm FOR CAST IN-SITU WALLS & PEDESTALS.
- 6) REINFORCING BARS SHALL BE S400 ACCORDING TO: ISIRI3132 AND INBC9 WITH MINIMUM TENSILE YIELD STRENGTH 400 N/mm<sup>2</sup>
- 7) THE FIRST HOOP OF TIE BEAM, COLUMN OR PEDESTAL SHALL BE LOCATED NOT MORE THAN 50mm FROM THE FACE OF FOUNDATION.
- 8) REINFORCEMENT SHALL BE ADJUSTED LOCALLY TO SUIT THE RECESS OF ANCHOR BOLTS, HOLES AND OTHER EMBEDDED MATERIALS.
- 9) UNDERGROUND CONCRETE SHALL BE PROTECTED AND COATED ACCORDING TO RELEVANT SPECIFICATION.
- 10) PORTLAND CEMENT TYPE 2 SHALL BE USED FOR CONCRETE AND LEAN CONCRETE.
- 11) FILL MATERIAL SHALL BE COMPACTED TO NOT LESS THAN 95% OF THE MAXIMUM DENSITY AS DETERMINED BY ASTM D-1557 (MODIFIED PROCTOR) METHOD.
- 12) FILL MATERIAL SHALL BE COMPACTED TO NOT LESS THAN 95% OF THE MAXIMUM

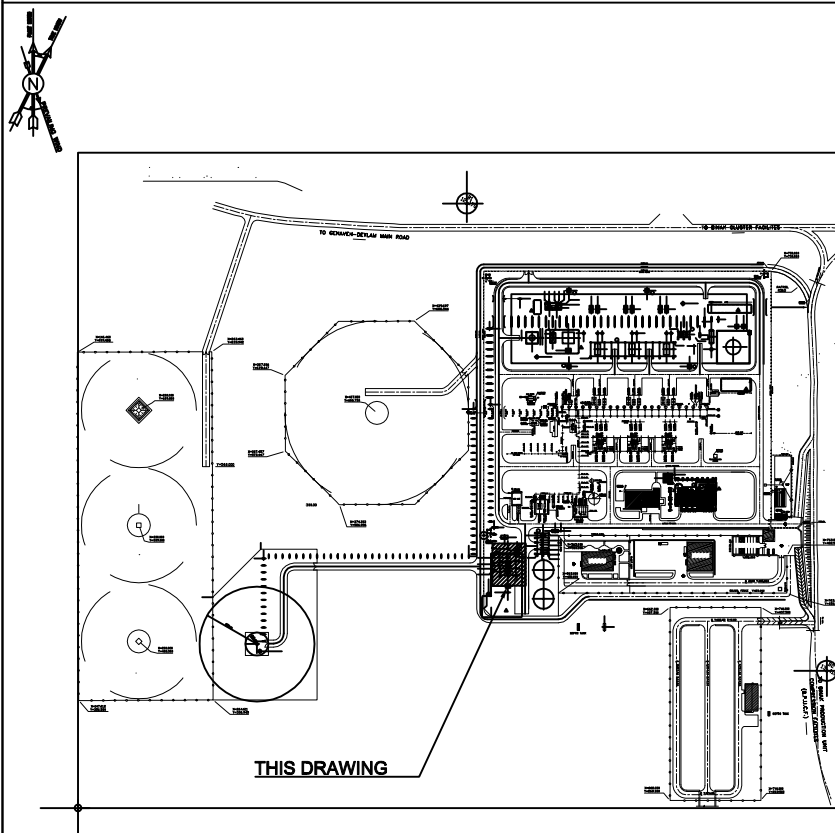
#### LEGEND



H.P.P. : HIGH POINT OF PAVING  
B.O.F. : BOTTOM OF FOUNDATION  
REINFORCED CONCRETE  
LEAN CONCRETE  
GROUND


#### REFERENCE DRAWING

ARCHITECTURAL DRAWING FOR UTILITY SHELTER	DRG. No.
GENERAL NOTES-REINFORCED CONCRETE STRUCTURES	BK-GCS-PEDCO-120-AR-DW-0004
TYPICAL DETAILS FOR ANCHOR BOLTS	BK-GNRL-PEDCO-000-ST-DW-0002
STRUCTURAL DRAWING FOR UTILITY SHELTER	BK-GCS-PEDCO-120-ST-DW-0068

#### KEY PLAN



D00	JUN.2023	IFC	R.BERLOUTE	M.PAKHARHIAN	A.M.MOHSENI	** **
REV.	DATE	P.O.I.S	PREP.	CHK.	APP.	AUT.
PROJECT NAME: BINAK OILFIELD DEVELOPMENT/SURFACE FACILITIES GAS COMPRESSOR STATION						
PROJECT NO.:			971020			
EPC CONTRACTOR:			EPD/EPC CONTRACTOR (GC):			
 HIRGAN ENERGY - DESIGN & INSPECTION COMPANIES			 PETROIRAN DEVELOPMENT COMPANY			
DRAWING TITLE: FOUNDATION DRAWING FOR UTILITY SHELTER						
SCALE	SIZE	DRAWING NO.			SHEET NO.	REV.
AS SHOWN	A1	BK-GCS-PEDCO-120-ST-DW-0067			02	D00

***	*****	** **	*** **	** **	*** **
REV.	DESCRIPTION	BY	DATE	BY	DATE
		CHECKED		REV. APPR.	
اخذ و کلیه نسخ این نقشه و حق اقتباس متعلق به شرکت ملی مناطق نفت خیز جنوب میباشد.					
THE ORIGINAL AND ALL COPIES OF THIS DRAWING TOGETHER WITH THE COPYRIGHT THEREIN ARE THE SOLE PROPERTY OF N.I.S.O.C./ FIELDS					
					
BINAK OILFIELD DEVELOPMENT SURFACE FACILITIES GAS COMPRESSOR STATION					
DATE	SCALE	DRAWING BY	CHECKED BY	PROJECT ENG.	
NO CONSTRUCTION PERMITTED UNLESS DRAWING APPROVED					
APPROVED FOR CONSTRUCTION			BY:	DATE:	
BUDGET REF.	LOCATION	SIZE	CLASS	SERIAL NO.	SHEET REVISION
053-073-9184	F	4	Q	709204	02 OF 02 DOO