



LIGHTING & SMALL POWER LAYOUT
FOR SWITCHGEAR BUILDING OF WELL PADS

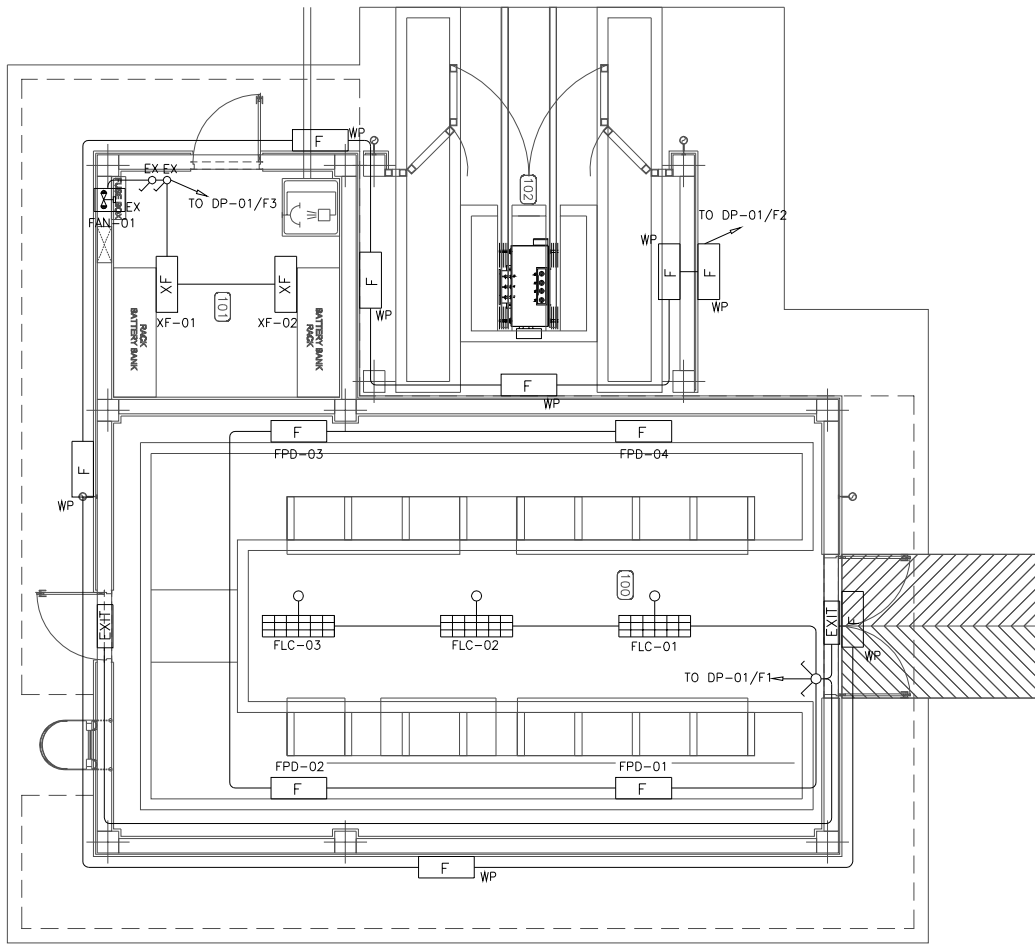
NOTES

LEGEND

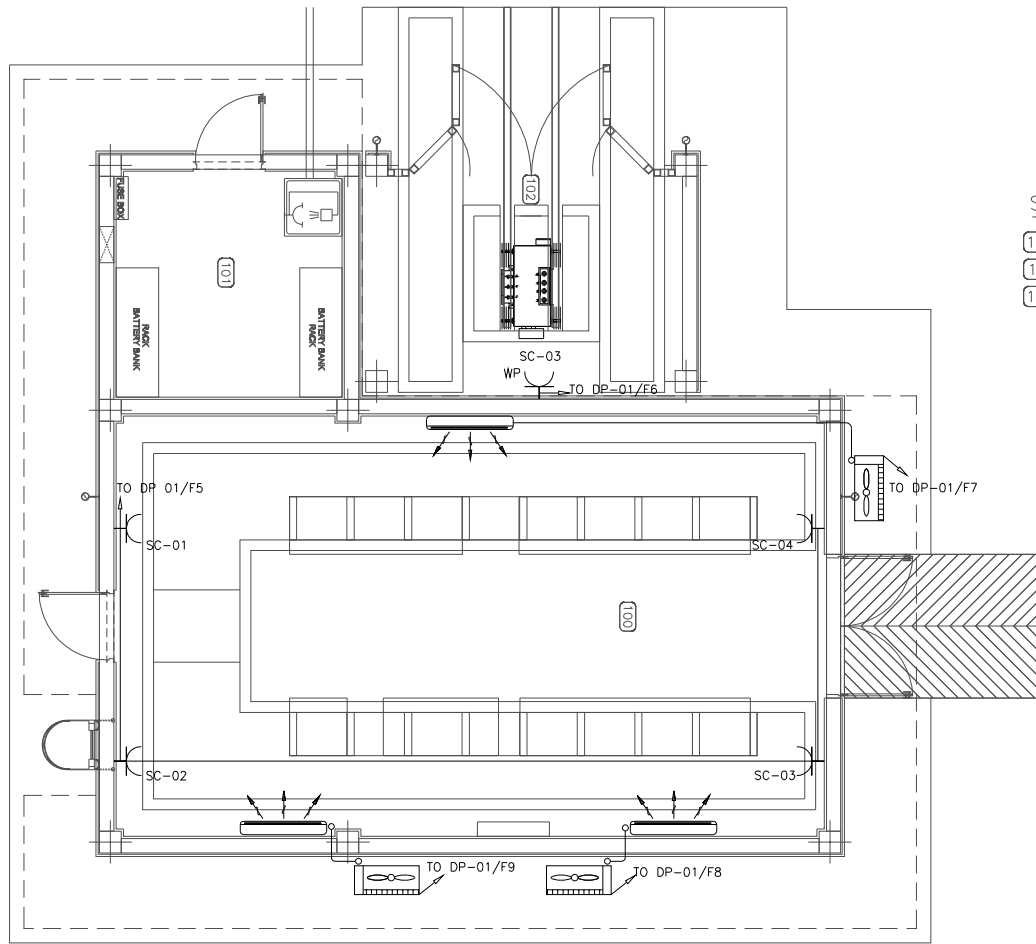
REFERENCE DRAWING	DRG. No.
SPECIFICATION FOR LIGHTING & SMALL POWER SYSTEM	BK-CHRAL-PEDCO-000-EL-SP-0007
ARCHITECTURAL DRAWING FOR SWITCHGEAR BUILDING OF WELL PADS - #0465	BK-#0465-PEDCO-110-AR-DH-0003
CALCULATION NOTE FOR LIGHTING SYSTEM OF WELL PADS SWITCHGEAR BUILDING	BK-SSORL-PEDCO-110-EL-CN-0002
SINGLE LINE DIAGRAM FOR LV POWER DISTRIBUTION PANEL OF WELL PADS	BK-SSORL-PEDCO-110-EL-SL-0003
TYPICAL INSTALLATION DETAILS & NOTES FOR LIGHTING SYSTEM	BK-CHRAL-PEDCO-000-EL-DH-0003
WPD FOR LIGHTING & SMALL POWERS - #0465	BK-#0465-PEDCO-110-EL-WT-0003
HVAC SYSTEM LAYOUT FOR SWITCHGEAR BUILDING - #0465	BK-#0465-PEDCO-110-HV-PY-0001

D03	JUN 2023	IFA	H.SHAKIBA	M.PAKHARIAN	A.M.MORSENI	** **						
D02	DEC 2022	IFA	H.SHAKIBA	M.PAKHARIAN	M.MEHRSHAD	** **	***	*****	** **	***.****	** **	***.****
D01	OCT 2022	IFA	H.SHAKIBA	M.PAKHARIAN	M.MEHRSHAD	** **	REV.	DESCRIPTION	BY	DATE	BY	DATE
D00	MAY 2022	IPC	H.SHAKIBA	M.PAKHARIAN	M.MEHRSHAD	** **			CHECKED		REV.	APPR.
REV.	DATE	P.O.I.S	PREP.	CHK.	APP.	AUT.	اصل و کاپیه نسخ این نقشه و حق اقتباس منطبق به شرکت ملی مناطق نفت خیز جنوب میباشد.					
PROJECT NAME:							BINAK OILFIELD DEVELOPMENT/SUB-SURFACE WORK PACKAGES GENERAL					
PROJECT NO.:							971020					
EPC CONTRACTOR:			EPD/BPC CONTRACTOR (GC):				BINAK OILFIELD DEVELOPMENT SUB-SURFACE WORK PACKAGES GENERAL					
 HIRGAN ENERGY - DESIGN & INSPECTION COMPANIES			 PETROIRAN DEVELOPMENT COMPANY									
							DATE	SCALE	DRAWING BY	CHECKED BY	PROJECT ENG.	
DRAWING TITLE: LIGHTING & SMALL POWER LAYOUT FOR SWITCHGEAR BUILDING OF WELL PADS							NO CONSTRUCTION PERMITTED UNLESS DRAWING APPROVED					
							APPROVED FOR CONSTRUCTION			BY:	DATE:	
SCALE	SIZE	DRAWING NO.			SHEET NO.	REV.	BUDGET REF.	LOCATION	SIZE	CLASS	SERIAL NO.	SHEET REVISION
AS SHOWN	A3	BK-SSORL-PEDCO-110-EL-PY-0004			1 OF 2	D03	063-073-9184	F	2	P	707412	1 OF 2 D03

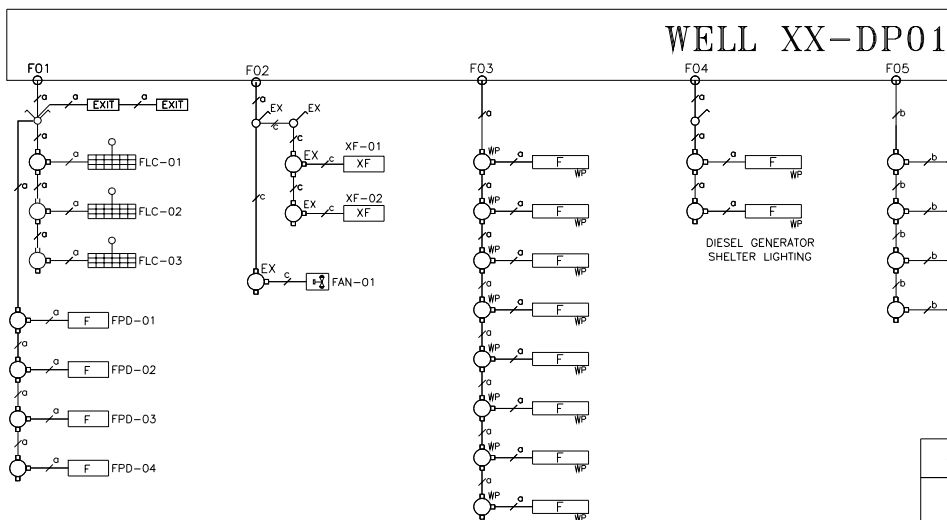
(VENDOR TITLE BLOCK)**



SWITCHGEAR LIGHTING LAYOUT



SWITCHGEAR SOCKET LAYOUT



WELL XX-DP01

SEQUENCE NUMBER
FLC: FLUORESCENT LIGHTING LAMP
FPD: FLUORESCENT PRIMATE DIFFUSER LAMP
XF: EXPLOSION PROOF FLUORESCENT FIXTURE
IL: INCANDESCENT LAMP
EX: EXIT LIGHT
FAN: EXHAUST FAN
SC: SOCKET
SP-SC: SPLIT SOCKET

LIGHTING FIXTURE NUMBERING PROCEDURE

LIGHTING FITTING	DESCRIPTION	LIGHTING FITTING	DESCRIPTION
	LIGHTING FIXTURE - DOMESTIC BI-PIN LONG LIFE FLUORESCENT LAMP WITH LOW BRIGHTNESS LOUVER - RAPID START TYPE, ELECTRONIC BALLASTS - PIPE PENDANT MOUNTING TYPE (FOR DIESEL SHELTER) - HIGH POWER FACTOR BALLAST(0.9 MIN.) - FLUORESCENT TUBES "DAY LIGHT" COLOUR 026mm DIA. x 590mm LONG(15WATT) 026mm DIA. x 1200mm LONG(36WATT) - SINGLE SYSTEM REFLECTOR - NUMBER OF ENTRIES : 2 x M20		LIGHTING FIXTURE - DOMESTIC BI-PIN LONG LIFE FLUORESCENT LAMP - RAPID START TYPE, ELECTRONIC BALLASTS - CEILING MOUNTING TYPE - HIGH POWER FACTOR BALLAST(0.9 MIN.) - FLUORESCENT TUBES "DAY LIGHT" COLOUR 026mm DIA. x 590mm LONG(15WATT) 026mm DIA. x 1200mm LONG(36WATT) - SINGLE SYSTEM REFLECTOR - NUMBER OF ENTRIES : 2 x M20
	LIGHTING FIXTURE - DOMESTIC BI-PIN LONG LIFE FLUORESCENT LAMP WITH PLASTIC PRIMATE DIFFUSER - RAPID START TYPE, ELECTRONIC BALLASTS - WALL MOUNTING TYPE - PIPE PENDANT MOUNTING TYPE (FOR DIESEL SHELTER) - HIGH POWER FACTOR BALLAST(0.9 MIN.) - FLUORESCENT TUBES "DAY LIGHT" COLOUR 026mm DIA. x 590mm LONG(15WATT) 026mm DIA. x 1200mm LONG(36WATT) - SINGLE SYSTEM REFLECTOR - NUMBER OF ENTRIES : 2 x M20		LIGHTING FIXTURE - DOMESTIC BI-PIN LONG LIFE FLUORESCENT LAMP - RAPID START TYPE, ELECTRONIC BALLASTS - CEILING MOUNTING TYPE - HIGH POWER FACTOR BALLAST(0.9 MIN.) - FLUORESCENT TUBES "DAY LIGHT" COLOUR 026mm DIA. x 590mm LONG(15WATT) 026mm DIA. x 1200mm LONG(36WATT) - SINGLE SYSTEM REFLECTOR - NUMBER OF ENTRIES : 2 x M20
	LIGHTING FIXTURE - DOMESTIC BI-PIN LONG LIFE FLUORESCENT LAMP WITH PLASTIC PRIMATE DIFFUSER - RAPID START TYPE, ELECTRONIC BALLASTS - WALL MOUNTING TYPE - PIPE PENDANT MOUNTING TYPE (FOR DIESEL SHELTER) - HIGH POWER FACTOR BALLAST(0.9 MIN.) - FLUORESCENT TUBES "DAY LIGHT" COLOUR 026mm DIA. x 590mm LONG(15WATT) 026mm DIA. x 1200mm LONG(36WATT) - SINGLE SYSTEM REFLECTOR - NUMBER OF ENTRIES : 2 x M20		LIGHTING FIXTURE - DOMESTIC BI-PIN LONG LIFE FLUORESCENT LAMP - RAPID START TYPE, ELECTRONIC BALLASTS - CEILING MOUNTING TYPE - HIGH POWER FACTOR BALLAST(0.9 MIN.) - FLUORESCENT TUBES "DAY LIGHT" COLOUR 026mm DIA. x 590mm LONG(15WATT) 026mm DIA. x 1200mm LONG(36WATT) - SINGLE SYSTEM REFLECTOR - NUMBER OF ENTRIES : 2 x M20

LIGHTING SCHEDULE

(VENDOR TITLE BLOCK)**

SPACE TAG NUMBER

- 100 SWITCHGEAR ROOM
101 BATTERY ROOM
102 TRANSFORMER SHELTER

NOTES

- THE MOUNTING HEIGHT OF THE FITTINGS ABOVE FINISHED FLOOR LEVEL SHALL BE AS FOLLOWS:
 - SOCKET OUTLET (GENERAL)= 30 Cm
 - SOCKET OUTLET (SWITCHGEAR ROOM & BATTERY ROOM)= 120 Cm
 - LIGHTING SWITCH =120 Cm
- METALLIC BODY OF ALL EQUIPMENT SHOULD BE CONNECTED TO EARTH SYSTEM.
- INDOOR DISTRIBUTION PANEL IS WALL MOUNTED & IP42.
- BOTTOM POINT OF WALL MOUNTED PANEL SHOULD BE 1.5m ABOVE FINISHED FLOOR.
- CABLE ENTRY TO PANEL IS FROM BOTTOM.
- ALL CABLES SHALL BE FIXED TO PANEL BY GLAND.
- TYPE OF THE CIRCUIT BREAKERS FOR FEEDING VARIOUS ELECTRICAL DEVICES AS FOLLOW:
 - LIGHTING: TYPE "B" (MCB 10A)
 - SOCKET: TYPE "C" (RCBO 16A)
 - SPLIT SOCKET: TYPE "C" (RCBO 25A)
- OUTDOOR LIGHTING AROUND BUILDING SHALL BE TURNED ON/OFF BY PHOTOCELL.
- CABLING SHALL BE DONE IN OPEN CONDUIT SYSTEM EXCEPT BATTERY ROOM.
- ALTHOUGH THE LOCATION OF EQUIPMENT HAS BEEN SHOWN, BUT AS SYMBOLS ARE NOT TO SCALE, MOST SUITABLE POSITIONS ARE TO BE CHOSEN AT SITE.
- INDUSTRIAL BUILDING LIGHTING CABLE SHALL BE LAID IN HDG (HOT DIP GALVANIZED) CONDUIT.
- THIS DRAWING IS VALID FOR ALL 6 NUMBER OF WELLS NAMED AS BELOW:
 - WELL NUMBER BK-12
 - WELL NUMBER BK-05
 - WELL NUMBER BKW-046
 - WELL NUMBER BK-15
 - WELL NUMBER W-007
 - WELL NUMBER BK-14
- THE POWER & CONTROL CABLE BETWEEN SPLIT UNIT & CONDENSER SHALL BE PROVIDED BY VENDOR.

LEGEND

- XF: FLUORESCENT FIXTURE 2x36w, Exd IIC T3 TYPE
INTERIOR REFLECTOR, CAPACITOR & BALLAST.
CEILING MOUNTED, IP65.
- F: SUSPENDED CEILING MOUNTED FLUORESCENT 2x36w
WITH LOUVER, CAPACITOR & BALLAST, IP42.
- F: SUSPENDED CEILING MOUNTED FLUORESCENT 2x36w
DIFFUSER WITH PLASTIC, WETHER PROOF, IP55.
- F: FLUORESCENT FIXTURE 2x36w, WITH PLASTIC
DIFFUSER, WALL MOUNTED, IP42
- F: FLUORESCENT FIXTURE 1x36w, WITH PLASTIC
DIFFUSER, WALL MOUNTED, WETHER PROOF, IP55
- EXIT: SAFETY LIGHTING, FLUORESCENT 1x8w
WITH 30 MINUTE BUILT-IN BATTERY PACK
- WP: METALLIC LIGHTING JUNCTION BOX,3WAY
LIGHTING JUNCTION BOX,3WAY, IP42.
- WP: METALLIC LIGHTING JUNCTION BOX,3WAY DUST &
MOISTURE PROOF LIGHTING JUNCTION BOX,3WAY,IP65.
- EX: METALLIC LIGHTING JUNCTION BOX,3WAY DUST &
MOISTURE PROOF LIGHTING JUNCTION BOX,3WAY
Exd IIC T3 TYPE, IP65.
- WP: ONE POLE SWITCH, ONE WAY, 10A, 230V,
SURFACE MOUNTED, IP55
- WP: ONE POLE, MULTIPosition SWITCH, 10A, 230V,
SURFACE MOUNTED, IP42
- EX: ONE POLE SWITCH, Exd IIC T3 TYPE ONE WAY, 10A,
230V, SURFACE MOUNTED
- EX: EXHAUST FAN 750W, Exd IIC T3 TYPE.
- WP: SOCKET OUTLET POWER WITH SINGLE PHASE
230V, 16A, SURFACE MOUNTED, IP42
- WP: SOCKET OUTLET POWER WITH SINGLE PHASE
230V, 25A, SURFACE MOUNTED, IP55
- WP: SOCKET OUTLET (POWER) WITH SINGLE POLE SWITCH
230V, 25A, SURFACE MOUNTED, IP 42
- WP: INDOOR UNIT WALL TYPE SPLIT AIR CONDITIONER
- WP: OUTDOOR UNIT SPLIT AIR CONDITIONER
- WP: ELECTRICAL DISTRIBUTION PANEL
- WP: WELL XX-DP01: DISTRIBUTION PANEL FOR SWITCHGEAR & OUTDOOR AREA
- WP: CU/PVC/PVC CABLE

REFERENCE DRAWING	DRG. No.
SPECIFICATION FOR LIGHTING & SMALL POWER SYSTEM	BK-CHNL-PEDCO-000-EL-SP-0007
ARCHITECTURAL DRAWING FOR SWITCHGEAR BUILDING OF WELL PADS - IP4045	BK-IP4045-PEDCO-110-AR-01-0003