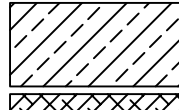



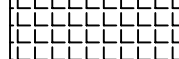


The floor plan shows a three-room apartment layout. The horizontal grid lines are labeled A, B, C, and D, with dimensions of 30, 500, 500, and 400 respectively. The vertical grid lines are labeled 1 and 2, with dimensions of 30, 500, and 555 respectively. The overall width is 1455 and the overall depth is 1085. The plan includes three rooms: Room 100 (left), Room 101 (middle), and Room 102 (right). Each room has a floor level of +0.15 F.F.L. Room 103 is a bathroom. The plan also shows doors, windows, and plumbing fixtures. The title block at the bottom center contains the text '±0.00 H.P.P.' and '1 03 0P 04'.

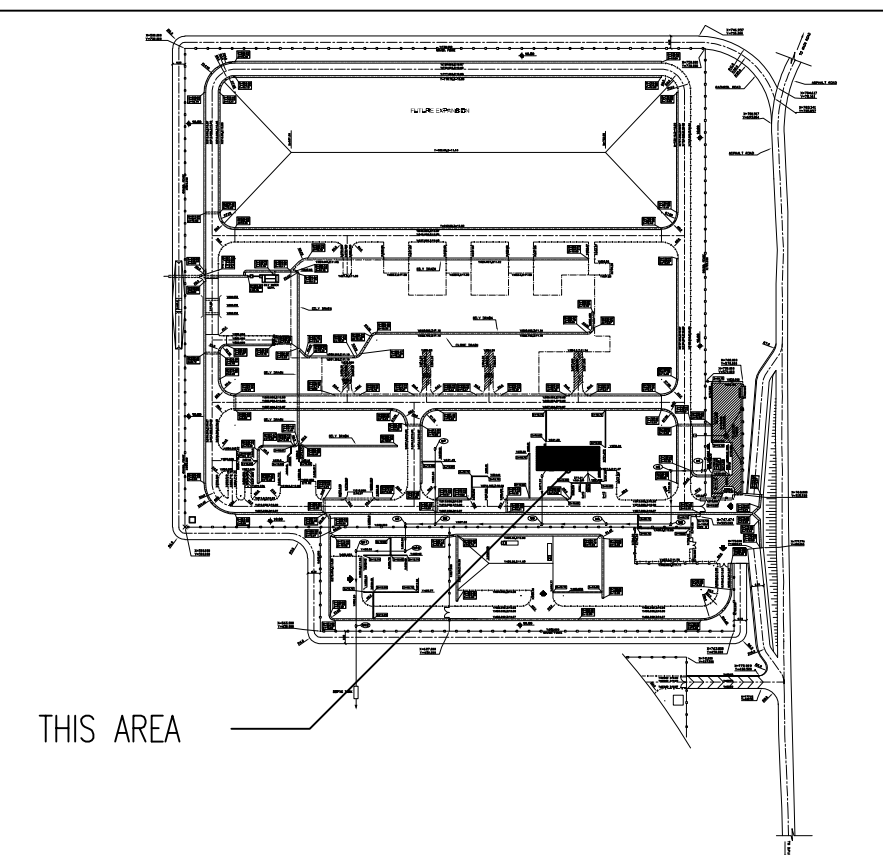
100	STORAGE
101	INSTRUMENT WORKSHOP
102	INSTRUMENT STORAGE
103	TOILET

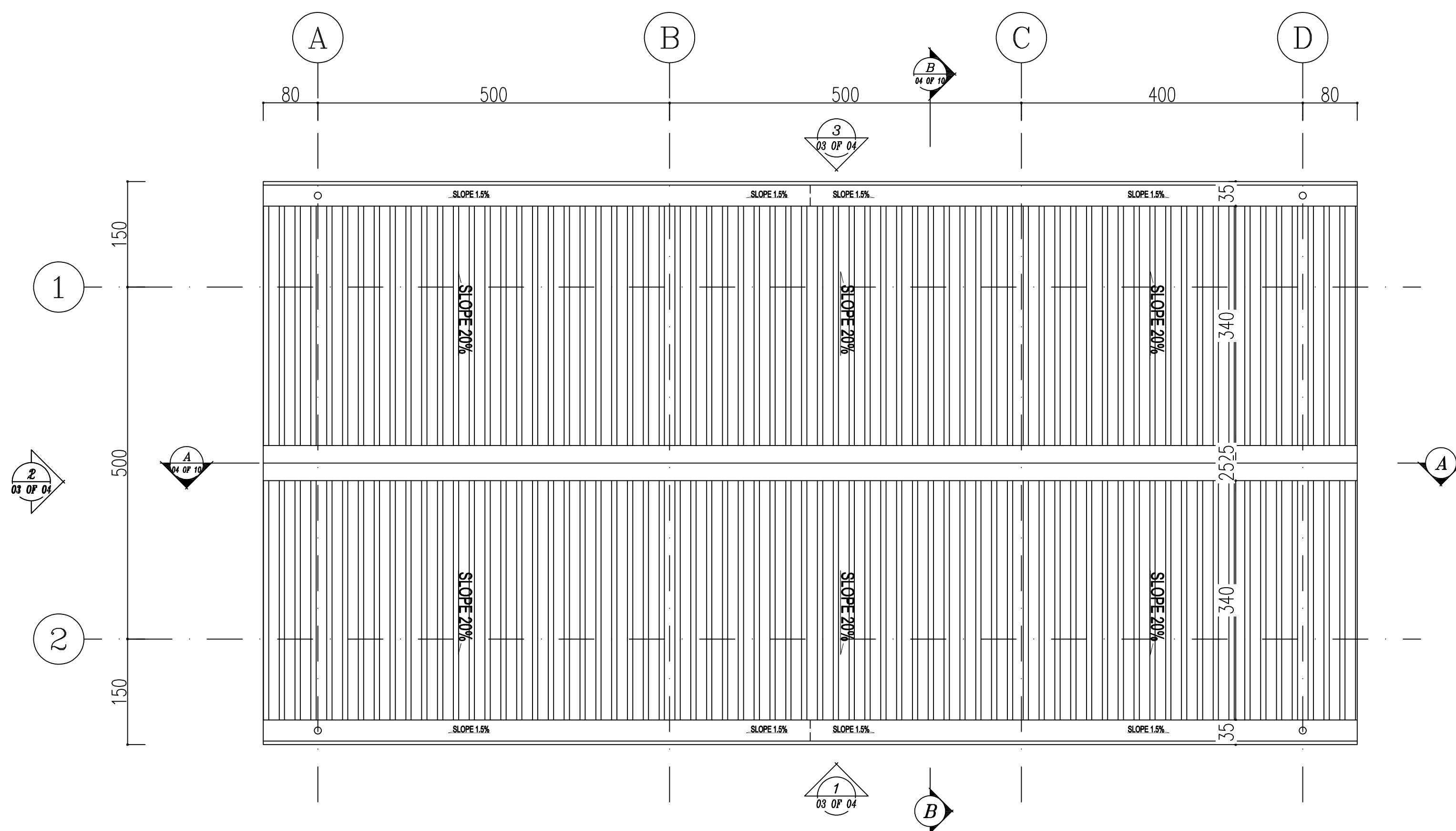
[illegible]

NOTES			
1.	ALL DIMENSIONS ARE IN CENTIMETER & ALL ELEVATIONS ARE IN METER.		
2.	ALL DIMENSIONS AND ELEVATIONS SHALL BE CHECKED BY THE CONTRACTOR PRIOR TO CONSTRUCTION.		
3.	CONTRACTOR SHALL COMPARE ALL ARCHITECTURAL, MECHANICAL, ELECTRICAL, PIPING AND STRUCTURAL DRAWINGS AND IN CASE OF ANY CONFLICTS OR DISCREPANCY, INFORM THE ENGINEER.		
4.	ALL MATERIALS ARE SELECTED FROM THE HIGHEST QUALITY AND MUST BE APPROVED BY THE CLIENT.		
5.	ALL OPENINGS FOR PIPING/CABLEING AND HVAC OPENINGS SHALL BE CONSIDERED AS PER RELATED DRAWINGS BEFORE CONSTRUCTION.		
6.	ARCHITECTURAL DETAIL DESIGN WILL BE REVISED BASED ON APPROVED STRUCTURAL DRAWINGS.		
LEGEND			
REINFORCED CONCRETE			
PRESSED BRICK			
BRICK FACE			
CERAMIC TILE			
TERRAZZO TILES – 30x30cm			
F.F.L.	FINISHED FLOOR	B.O.P.	BOTTOM OF PIT
T.O.WA	TOP OF WALKWAY	F.G.L.	FINISH GRADING LEVEL
T.O.P.	TOP OF PARAPET	T.O.T	TOP OF TIE BEAM
T.O.FOU.	TOP OF FOUNDATION	C.O.S.	CENTER OF SLEEVE
M.D	METAL DOOR	B.O.S.	BOTTOM OF SLEEVE
T.O.R.	TOP OF ROOF	B.O.O.	BOTTOM OF OPENING
T.O.D.	TOP OF DOOR	B.O.T.	BOTTOM OF TRENCH
B.O.Ca.	BOTTOM OF CAGE	B.O.P.	BOTTOM OF PIT
T.O.Ca.	TOP OF CAGE	R.H.P.	ROOF HIGHEST POINT
B.O.G.	BOTTOM OF GUTTER	R.L.P.	ROOF LOWEST POINT
T.O.Ca.	TOP OF CAGE	N.G.R.	NEUTRAL GROUND RESISTOR
M.D.	METAL DOOR	B.P.D.	BLAST–PROOF DOOR
		F.D.	FENCE DOOR

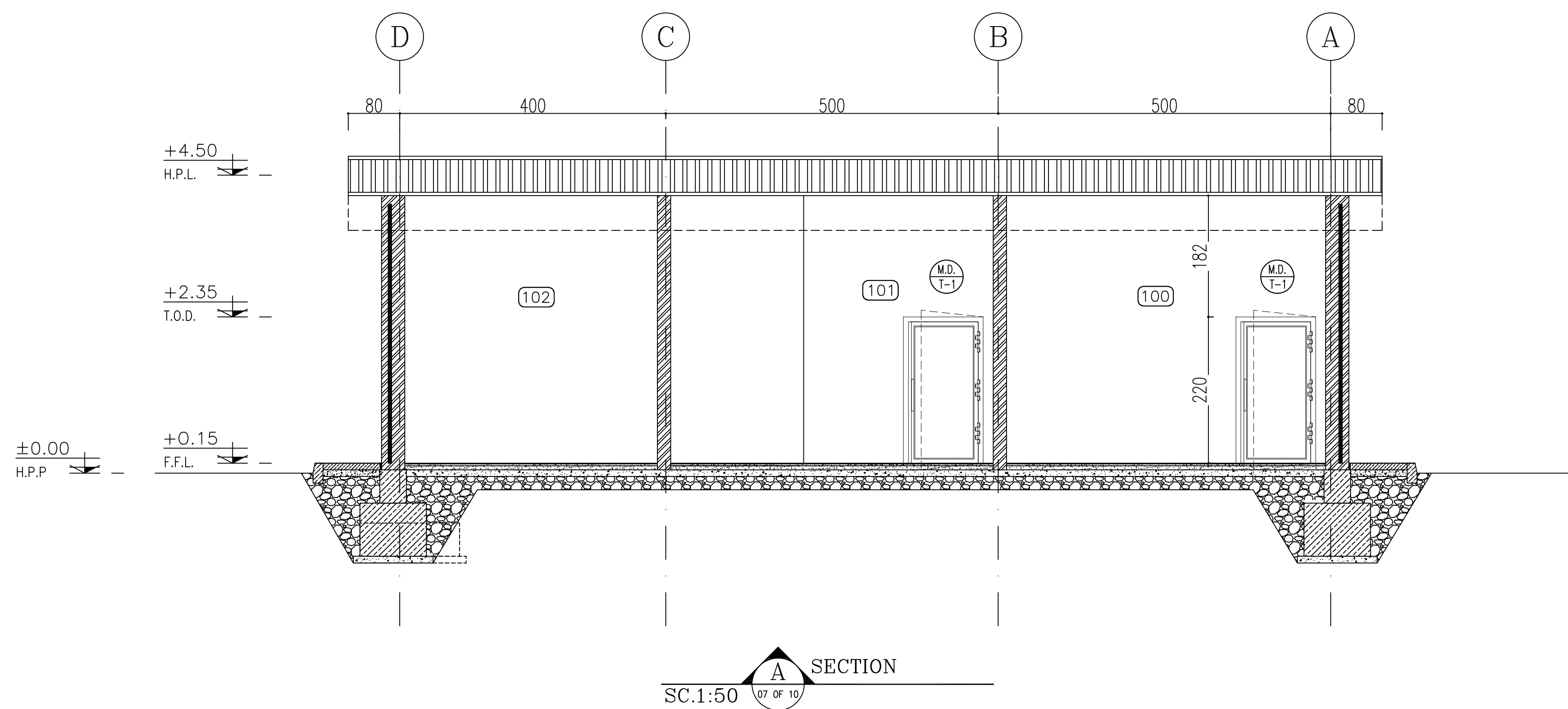
REFERENCE DRAWING	DRG. No.
STANDARD DRAWING FOR ARCHITECTURAL DETAILS	BK-GN-RL-PEDCO-000-AR-DW-0001
SITE SEWAGEAGE SYSTEM LAYOUT & DETAILS	BK-GCS-PEDCO-120-CY-PY-0001
CABLE TRENCH AND DUCT BANK LAYOUT	BK-GCS-PEDCO-120-CY-PY-0002
ROAD, PAVING AND PLANT FINISH GRADING LAYOUT & SECTIONS	BK-GCS-PEDCO-120-CY-PY-0005
ELECTRICAL CABLE ROUTE & SECTION LAYOUT FOR BUILDING & SHEELER	BK-GCS-PEDCO-120-EL-PY-0006
FOUNDATION DRAWING FOR EXTENSION OF EXISTING ELECT. BUILDING	BK-GCS-PEDCO-120-ST-DW-0063
STRUCTURAL DRAWING FOR EXTENSION OF EXISTING ELECT. BUILDING	BK-GCS-PEDCO-120-ST-DW-0064
STANDARD DETAILS FOR LADDER & SAFETY CAGE	BK-GN-RL-PEDCO-000-ST-DW-0009
ELECTRICAL EQUIPMENT ARRANGEMENT LAYOUT FOR BUILDING	BK-GCS-PEDCO-120-ST-EL-PY-0008

KEY PLAN





SC.1:50 3 ROOF PLAN



SECTION
SC.1:50 07 OF 10

NOTES

1. ALL DIMENSIONS ARE IN CENTIMETER & ALL ELEVATIONS ARE IN METER.
2. ALL DIMENSIONS AND ELEVATIONS SHALL BE CHECKED BY THE CONTRACTOR PRIOR TO CONSTRUCTION.
3. CONTRACTOR SHALL COMPARE ALL ARCHITECTURAL, MECHANICAL, ELECTRICAL, PIPING AND STRUCTURAL DRAWINGS AND IN CASE OF ANY CONFLICTS OR DISCREPANCY, INFORM THE ENGINEER.
4. ALL MATERIALS ARE SELECTED FROM THE HIGHEST QUALITY AND MUST BE APPROVED BY THE CLIENT.
5. ALL OPENINGS FOR PIPING/CABLING AND HVAC OPENINGS SHALL BE CONSIDERED AS PER RELATED DRAWINGS BEFORE CONSTRUCTION.
6. ARCHITECTURAL DETAIL DESIGN WILL BE REVISED BASED ON APPROVED STRUCTURAL DRAWINGS.

LEGEND

REINFORCED CONCRETE

PRESSED BRICK

BRICK FACE

CERAMIC TILE

TERRAZZO TILES – 30x30cm

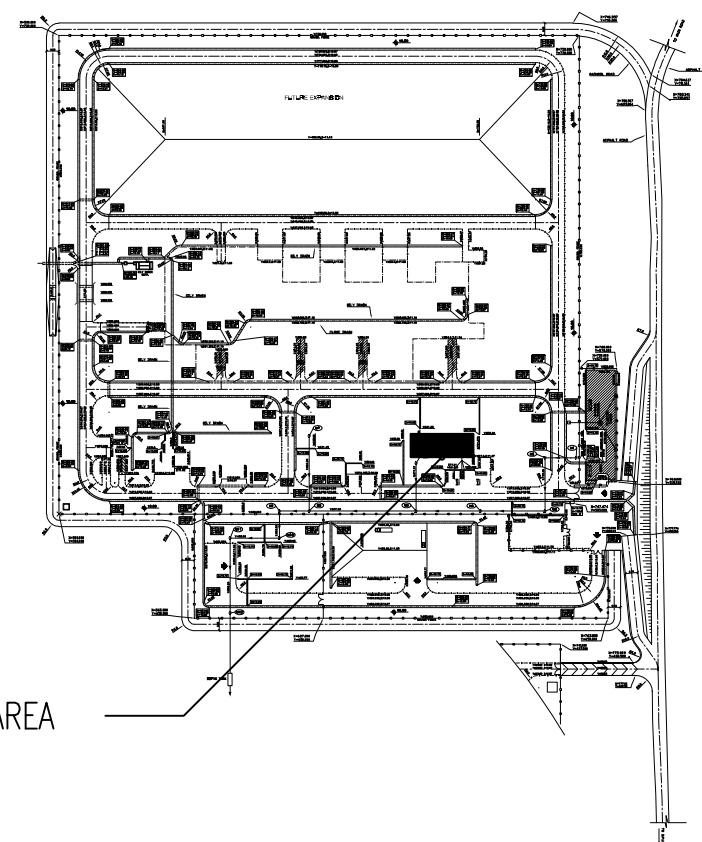
The legend displays five distinct patterns used for material identification in architectural drawings:

- REINFORCED CONCRETE:** Represented by a pattern of parallel diagonal lines sloping from the top-left to the bottom-right.
- PRESSED BRICK:** Represented by a cross-hatch pattern, consisting of both horizontal and vertical lines forming a grid of small squares.
- BRICK FACE:** Represented by a pattern of parallel diagonal lines sloping from the top-right to the bottom-left.
- CERAMIC TILE:** Represented by a grid pattern where each square is further divided into a 3x3 sub-grid, creating a smaller square pattern within the larger squares.
- TERRAZZO TILES – 30x30cm:** Represented by a simple grid pattern of equal-sized squares.

F.F.L.	FINISHED FLOOR	B.O.P.	BOTTOM OF PIT
T.O.WA	TOP OF WALKWAY	F.G.L.	FINISH GRADING LEVEL
T.O.P.	TOP OF PARAPET	T.O.T.	TOP OF THE BEAM
T.O.FOU.	TOP OF FOUNDATION	C.O.S.	CENTER OF SLEEVE
M.D	METAL DOOR	B.O.S.	BOTTOM OF SLEEVE
T.O.R.	TOP OF ROOF	B.O.O.	BOTTOM OF OPENING
T.O.D.	TOP OF DOOR	B.O.T.	BOTTOM OF TRENCH
B.O.Ca.	BOTTOM OF CAGE	B.O.P.	BOTTOM OF PIT
T.O.Ca.	TOP OF CAGE	R.H.P.	ROOF HIGHEST POINT
B.O.G.	BOTTOM OF GUTTER	R.L.P.	ROOF LOWEST POINT
T.O.Ca.	TOP OF CAGE	N.G.R.	NEUTRAL GROUND RESISTOR
M.D.	METAL DOOR	B.P.D.	BLAST—PROOF DOOR
		F.D.	FENCE DOOR

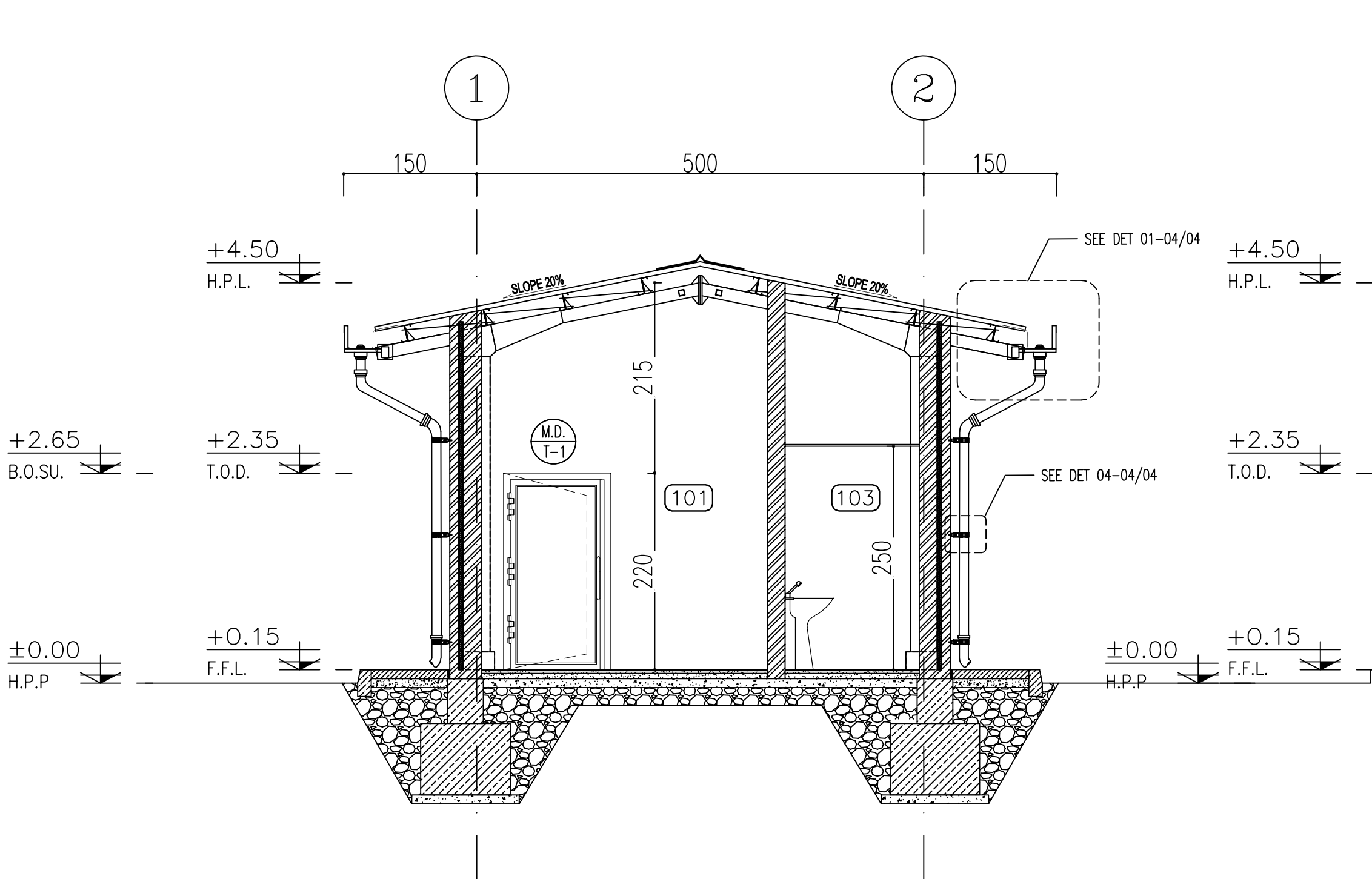
REFERENCE DRAWING	DRG. No.
STANDARD DRAWING FOR ARCHITECTURAL DETAILS	BK-GNRL-PEDCO-000-AR-DW-0001
SITE SEWAGEAGE SYSTEM LAYOUT & DETAILS	BK-GCS-PEDCO-120-CV-PY-0001
CABLE TRENCH AND DUCT BANK LAYOUT	BK-GCS-PEDCO-120-CV-PY-0002
ROAD, PAVING AND PLANT FINISH GRADING LAYOUT & SECTIONS	BK-GCS-PEDCO-120-CV-PY-0003
ELECTRICAL CABLE ROUTE & SECTION LAYOUT FOR BUILDING & SHED	BK-GCS-PEDCO-120-EL-PY-0005
FOUNDATION DRAWING FOR EXTENSION OF EXISTING ELEC. BUILDING	BK-GCS-PEDCO-120-ST-DW-0063
STRUCTURAL DRAWING FOR EXTENSION OF EXISTING ELEC. BUILDING	BK-GCS-PEDCO-120-ST-DW-0064
STANDARD DETAILS FOR LADDER & SAFETY CAGE	BK-GNRL-PEDCO-000-ST-EL-DW-0009
ELECTRICAL EQUIPMENT ARRANGEMENT LAYOUT FOR BUILDING	BK-GCS-PEDCO-120-ST-EL-PY-0008

KEY PLAN

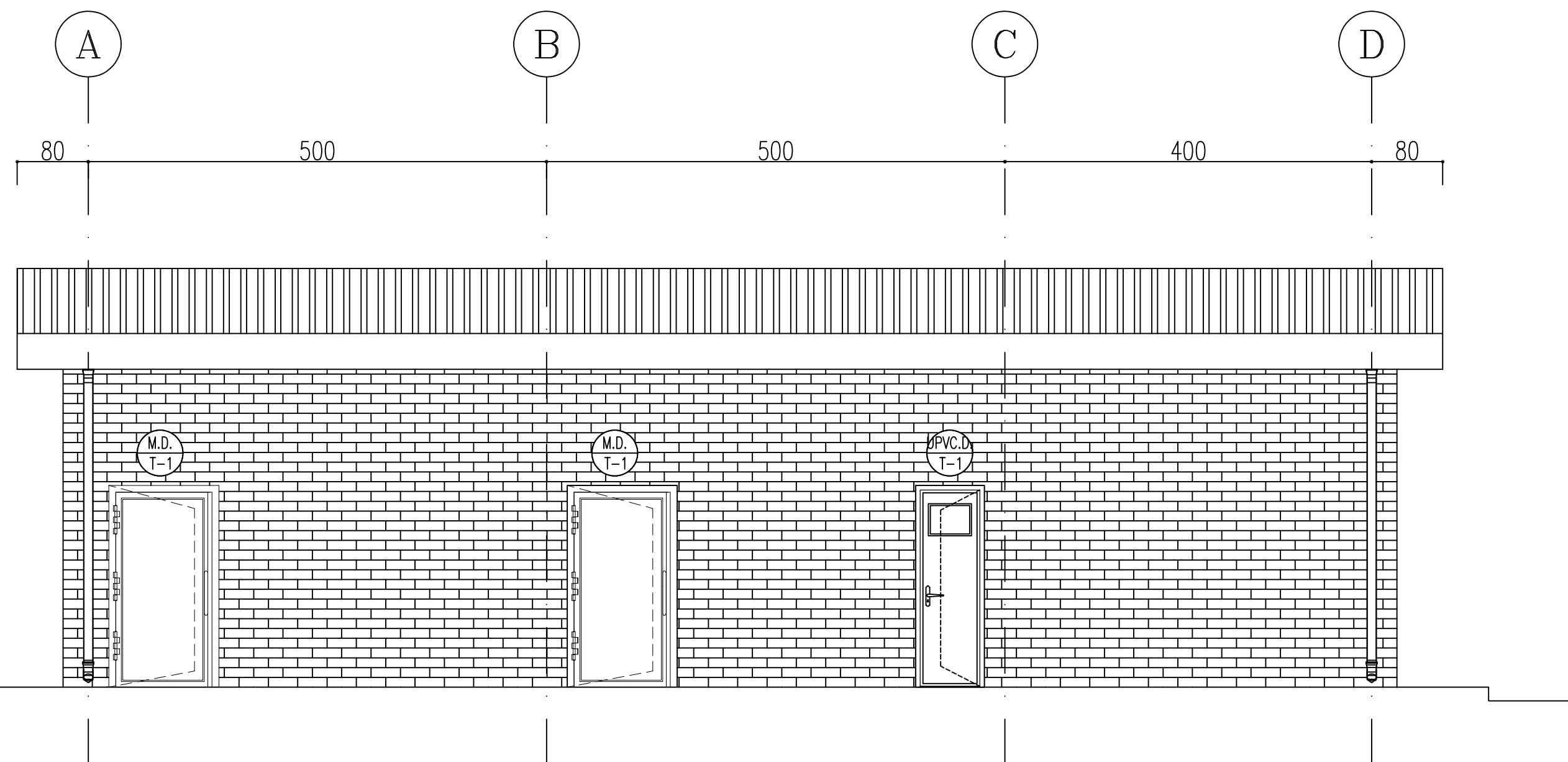


100	STORAGE
101	INSTRUMENT WORKSHOP
102	INSTRUMENT STORAGE
103	TOILET

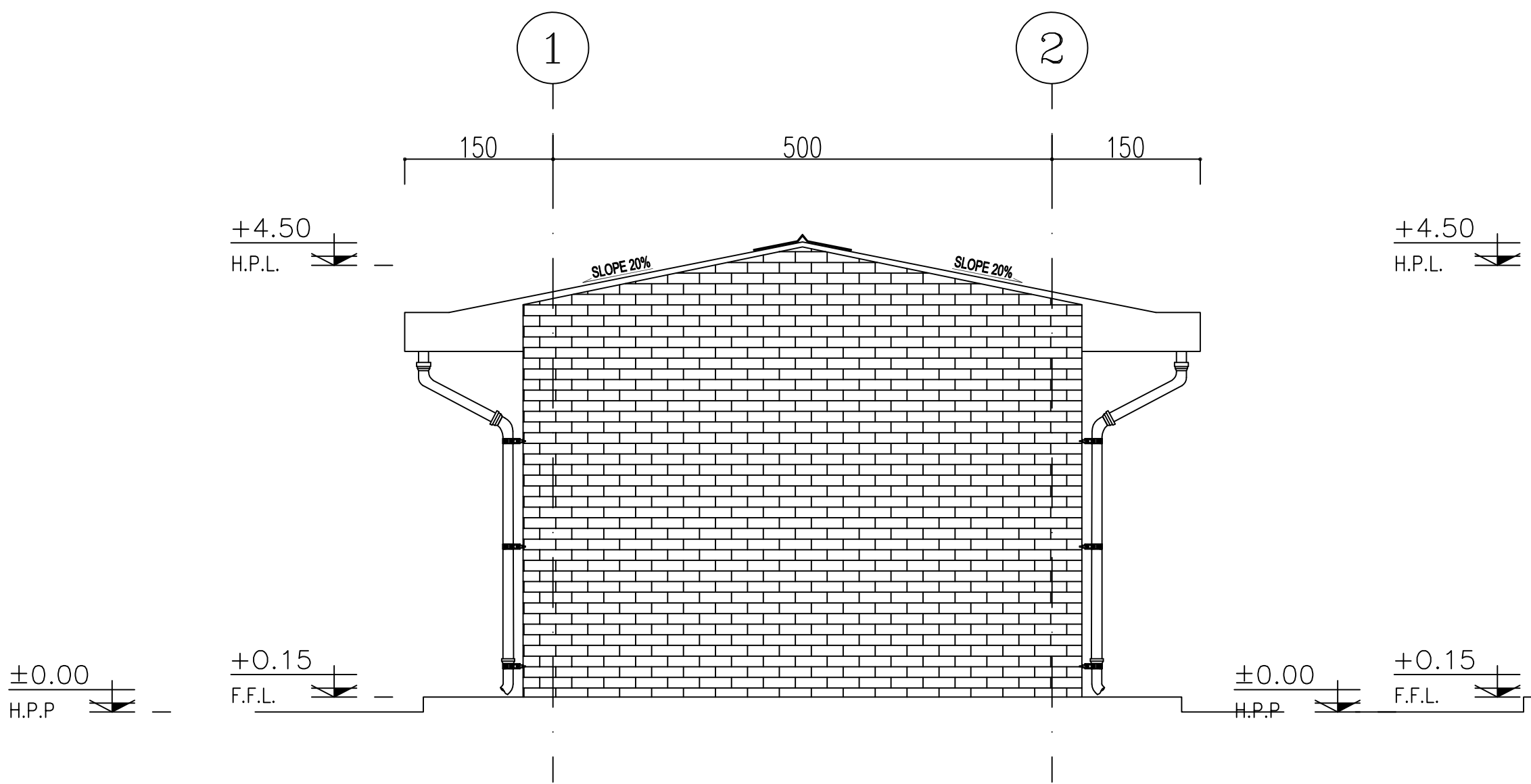
[illegible]



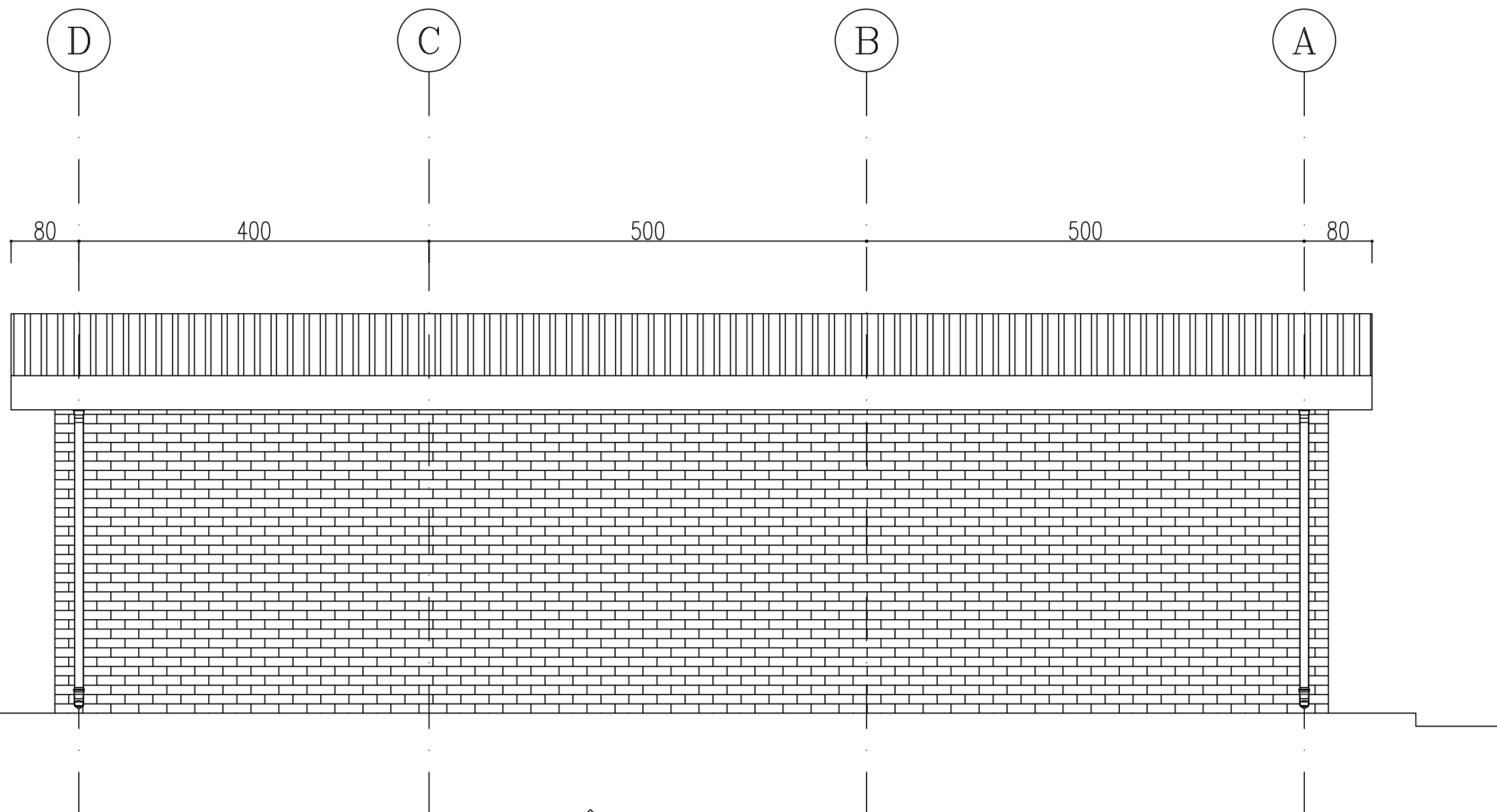
B SECTION
SC.1:50
07 OF 10



1 ELEVATION
SC.1:50
07 OF 10



2 ELEVATION
SC.1:50
07 OF 10



3 ELEVATION
SC.1:50
07 OF 10

100	STORAGE
101	INSTRUMENT WORKSHOP
102	INSTRUMENT STORAGE
103	TOILET

NOTES

1. ALL DIMENSIONS ARE IN CENTIMETER & ALL ELEVATIONS ARE IN METER.
2. ALL DIMENSIONS AND ELEVATIONS SHALL BE CHECKED BY THE CONTRACTOR PRIOR TO CONSTRUCTION.
3. CONTRACTOR SHALL COMPLY ALL ARCHITECTURAL, MECHANICAL, ELECTRICAL, PIPING AND STRUCTURAL DRAWINGS AND IN CASE OF ANY CONFLICTS OR DISCREPANCY, INFORM THE ENGINEER.
4. ALL MATERIALS ARE SELECTED FROM THE HIGHEST QUALITY AND MUST BE APPROVED BY THE CLIENT.
5. ALL OPENINGS FOR PIPING, CABLEING AND HVAC OPENINGS SHALL BE CONSIDERED AS PER RELATED DRAWINGS BEFORE CONSTRUCTION.
6. ARCHITECTURAL DETAIL DESIGN WILL BE REVISED BASED ON APPROVED STRUCTURAL DRAWINGS.

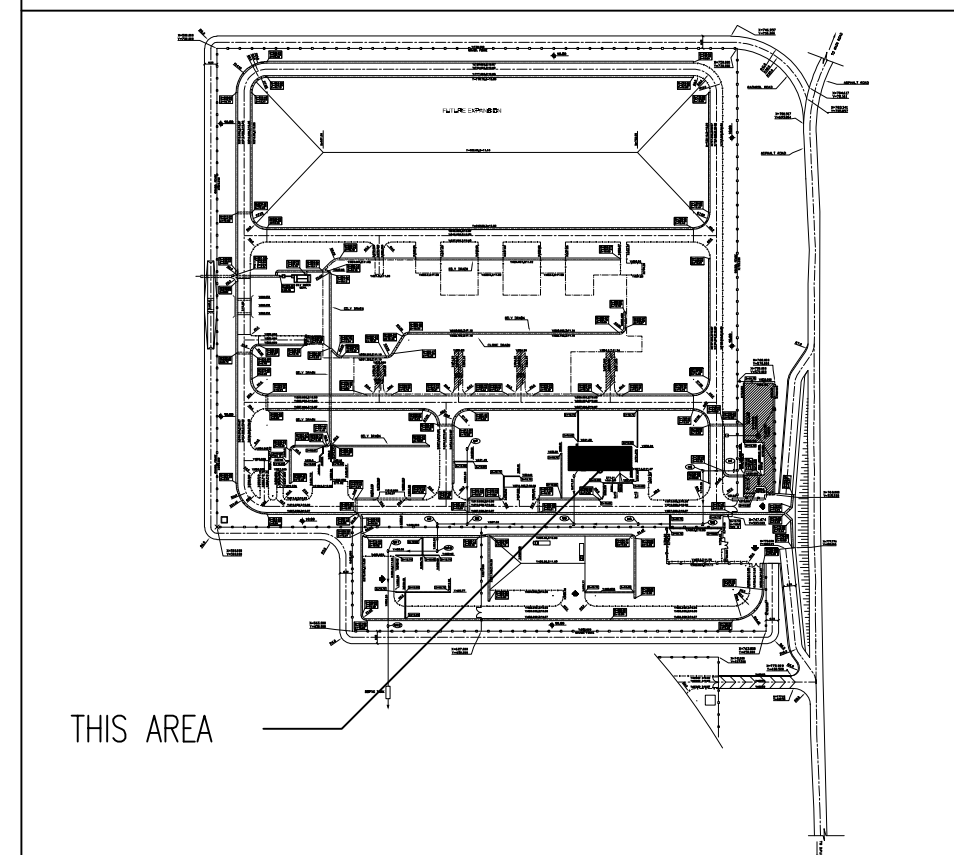
LEGEND

REINFORCED CONCRETE
PRESSED BRICK
BRICK FACE
CERAMIC TILE
TERRAZZO TILES - 30x30cm

F.F.L. FINISHED FLOOR
T.O.WA TOP OF WALKWAY
T.O.P. TOP OF PARAPET
T.O.FOU. TOP OF FOUNDATION
M.D. METAL DOOR
T.O.R. TOP OF ROOF
T.O.D. TOP OF DOOR
B.O.Co. BOTTOM OF CAGE
T.O.Co. TOP OF CAGE
B.O.G. BOTTOM OF GUTTER
T.O.Co. TOP OF CAGE
M.D. METAL DOOR
B.O.P. BOTTOM OF PIT
F.G.L. FINISH GRADING LEVEL
T.O.T. TOP OF TIE BEAM
C.O.S. CENTER OF SLEEVE
B.O.S. BOTTOM OF SLEEVE
B.O.O. BOTTOM OF OPENING
B.O.T. BOTTOM OF TRENCH
B.O.P. BOTTOM OF PIT
R.H.P. ROOF HIGHEST POINT
R.L.P. ROOF LOWEST POINT
N.G.R. NEUTRAL GROUND RESISTOR
B.P.D. BLAST-PROOF DOOR
F.D. FENCE DOOR

REFERENCE DRAWING	DRG. No.
STANDARD DRAWING FOR ARCHITECTURAL DETAILS	BK-GNRL-PEDCO-000-AR-DW-0001
SITE SEWAGE SYSTEM LAYOUT & DETAILS	BK-GCS-PEDCO-120-CY-PY-0001
CABLE TRENCH AND DUCT BANK LAYOUT	BK-GCS-PEDCO-120-CY-PY-0002
ROAD, PAVING AND PLANT FINISH GRADING LAYOUT & SECTIONS	BK-GCS-PEDCO-120-CY-PY-0005
ELECTRICAL CABLE ROUTE & SECTION LAYOUT FOR BUILDING & SHELTER	BK-GCS-PEDCO-120-EL-PY-0006
FOUNDATION DRAWING FOR EXTENSION OF EXISTING ELECT. BUILDING	BK-GCS-PEDCO-120-ST-DW-0063
STRUCTURAL DRAWING FOR EXTENSION OF EXISTING ELECT. BUILDING	BK-GCS-PEDCO-120-ST-DW-0064
STANDARD DETAILS FOR LADDER & SAFETY CAGE	BK-GNRL-PEDCO-000-ST-DW-0009
ELECTRICAL EQUIPMENT ARRANGEMENT LAYOUT FOR BUILDING	BK-GCS-PEDCO-120-ST-EL-PY-0008

KEY PLAN



--	--	--	--	--	--	--	--	--	--	--	--	--	--	--	--	--	--	--	--	--	--	--	--	--	--	--	--	--	--	--	--	--	--	--	--	--	--	--	--	--	--	--	--	--	--	--	--	--	--	--	--	--	--	--	--	--	--	--	--	--	--	--	--	--	--	--	--	--	--	--	--	--	--	--	--	--	--	--	--	--	--	--	--	--	--	--	--	--	--	--	--	--	--	--	--	--	--	--	--	--	--	--	--	--	--	--	--	--	--	--	--	--	--	--	--	--	--	--	--	--	--	--	--	--	--	--	--	--	--	--	--	--	--	--	--	--	--	--	--	--	--	--	--	--	--	--	--	--	--	--	--	--	--	--	--	--	--	--	--	--	--	--	--	--	--	--	--	--	--	--	--	--	--	--	--	--	--	--	--	--	--	--	--	--	--	--	--	--	--	--	--	--	--	--	--	--	--	--	--	--	--	--	--	--	--	--	--	--	--	--	--	--	--	--	--	--	--	--	--	--	--	--	--	--	--	--	--	--	--	--	--	--	--	--	--	--	--	--	--	--	--	--	--	--	--	--	--	--	--	--	--	--	--	--	--	--	--	--	--	--	--	--	--	--	--	--	--	--	--	--	--	--	--	--	--	--	--	--	--	--	--	--	--	--	--	--	--	--	--	--	--	--	--	--	--	--	--	--	--	--	--	--	--	--	--	--	--	--	--	--	--	--	--	--	--	--	--	--	--	--	--	--	--	--	--	--	--	--	--	--	--	--	--	--	--	--	--	--	--	--	--	--	--	--	--	--	--	--	--	--	--	--	--	--	--	--	--	--	--	--	--	--	--	--	--	--	--	--	--	--	--	--	--	--	--	--	--	--	--	--	--	--	--	--	--	--	--	--	--	--	--	--	--	--	--	--	--	--	--	--	--	--	--	--	--	--	--	--	--	--	--	--	--	--	--	--	--	--	--	--	--	--	--	--	--	--	--	--	--	--	--	--	--	--	--	--	--	--	--	--	--	--	--	--	--	--	--	--	--	--	--	--	--	--	--	--	--	--	--	--	--	--	--	--	--	--	--	--	--	--	--	--	--	--	--	--	--	--	--	--	--	--	--	--	--	--	--	--	--	--	--	--	--	--	--	--	--	--	--	--	--	--	--	--	--	--	--	--	--	--	--	--	--	--	--	--	--	--	--	--	--	--	--	--	--	--	--	--	--	--	--	--	--	--	--	--	--	--	--	--	--	--	--	--	--	--	--	--	--	--	--	--	--	--	--	--	--	--	--	--	--	--	--	--	--	--	--	--	--	--	--	--	--	--	--	--	--	--	--	--	--	--	--	--	--	--	--	--	--	--	--	--	--	--	--	--	--	--	--	--	--	--	--	--	--	--	--	--	--	--	--	--	--	--	--	--	--	--	--	--	--	--	--	--	--	--	--	--	--	--	--	--	--	--	--	--	--	--	--	--	--	--	--	--	--	--	--	--	--	--	--	--	--	--	--	--	--	--	--	--	--	--	--	--	--	--	--	--	--	--	--	--	--	--	--	--	--	--	--	--	--	--	--	--	--	--	--	--	--	--	--	--	--	--	--	--	--	--	--	--	--	--	--	--	--	--	--	--	--	--	--	--	--	--	--	--	--	--	--	--	--	--	--	--	--	--	--	--	--	--	--	--	--	--	--	--	--	--	--	--	--	--	--	--	--	--	--	--	--	--	--	--	--	--	--	--	--	--	--	--	--	--	--	--	--	--	--	--	--	--	--	--	--	--	--	--	--	--	--	--	--	--	--	--	--	--	--	--	--	--	--	--	--	--	--	--	--	--	--	--	--	--	--	--	--	--	--	--	--	--	--	--	--	--	--	--	--	--	--	--	--	--	--	--	--	--	--	--	--	--	--	--	--	--	--	--	--	--	--	--	--	--	--	--	--	--	--	--	--	--	--	--	--	--	--	--	--	--	--	--	--	--	--	--	--	--	--	--	--	--	--	--	--	--	--	--	--	--	--	--	--	--	--	--	--	--	--	--	--	--	--	--	--	--	--	--	--	--	--	--	--	--	--	--	--	--	--	--	--	--	--	--	--	--	--	--	--	--	--	--	--	--	--	--	--	--	--	--	--	--	--	--	--	--	--	--	--	--	--	--	--	--	--	--	--	--	--	--	--	--	--	--	--	--	--	--	--	--	--	--	--	--	--	--	--	--	--	--	--	--	--	--	--	--	--	--	--	--	--	--	--	--	--	--	--	--	--	--	--	--	--	--	--	--	--	--	--	--	--	--	--	--	--	--	--	--	--	--	--	--	--	--	--	--	--	--	--	--	--	--	--	--	--	--	--	--	--	--	--	--	--	--	--	--	--	--	--	--	--	--	--	--	--	--	--	--	--	--	--	--	--	--	--	--	--	--	--	--	--	--	--	--	--	--	--	--	--	--	--	--	--	--	--	--	--	--	--	--	--	--	--	--	--	--	--	--	--	--	--	--	--	--	--	--	--	--	--	--	--	--	--	--	--	--	--	--	--	--	--	--	--	--	--	--	--	--	--	--	--	--	--	--	--	--	--	--	--	--	--	--	--	--	--	--	--	--	--	--	--	--	--	--	--	--	--	--	--	--	--	--	--	--	--	--	--	--	--	--	--	--	--	--	--	--	--	--	--	--	--	--	--	--	--	--	--	--	--	--	--	--	--	--	--	--	--	--	--	--	--	--	--	--	--	--	--	--	--	--	--	--	--	--	--	--	--	--	--	--	--	--	--	--	--	--	--	--	--	--	--	--	--	--	--	--	--	--	--	--	--	--	--	--	--	--	--	--	--	--	--	--	--	--	--	--	--	--	--	--	--	--	--	--	--	--	--	--	--	--	--	--	--	--	--	--	--	--	--	--	--	--	--	--	--	--	--	--	--	--	--	--	--	--	--	--	--	--	--	--	--	--	--	--	--	--	--	--	--	--	--	--	--	--	--	--	--	--	--	--	--	--	--	--	--	--	--	--	--	--	--	--	--	--	--	--	--	--	--	--	--	--	--	--	--	--	--	--	--	--	--	--	--	--	--	--	--	--	--	--	--	--	--	--	--	--	--	--	--	--	--	--	--	--	--	--	--	--	--	--	--	--	--	--	--	--	--	--	--	--	--	--	--	--	--	--	--	--	--	--	--	--	--	--	--	--	--	--	--	--	--	--	--	--	--

