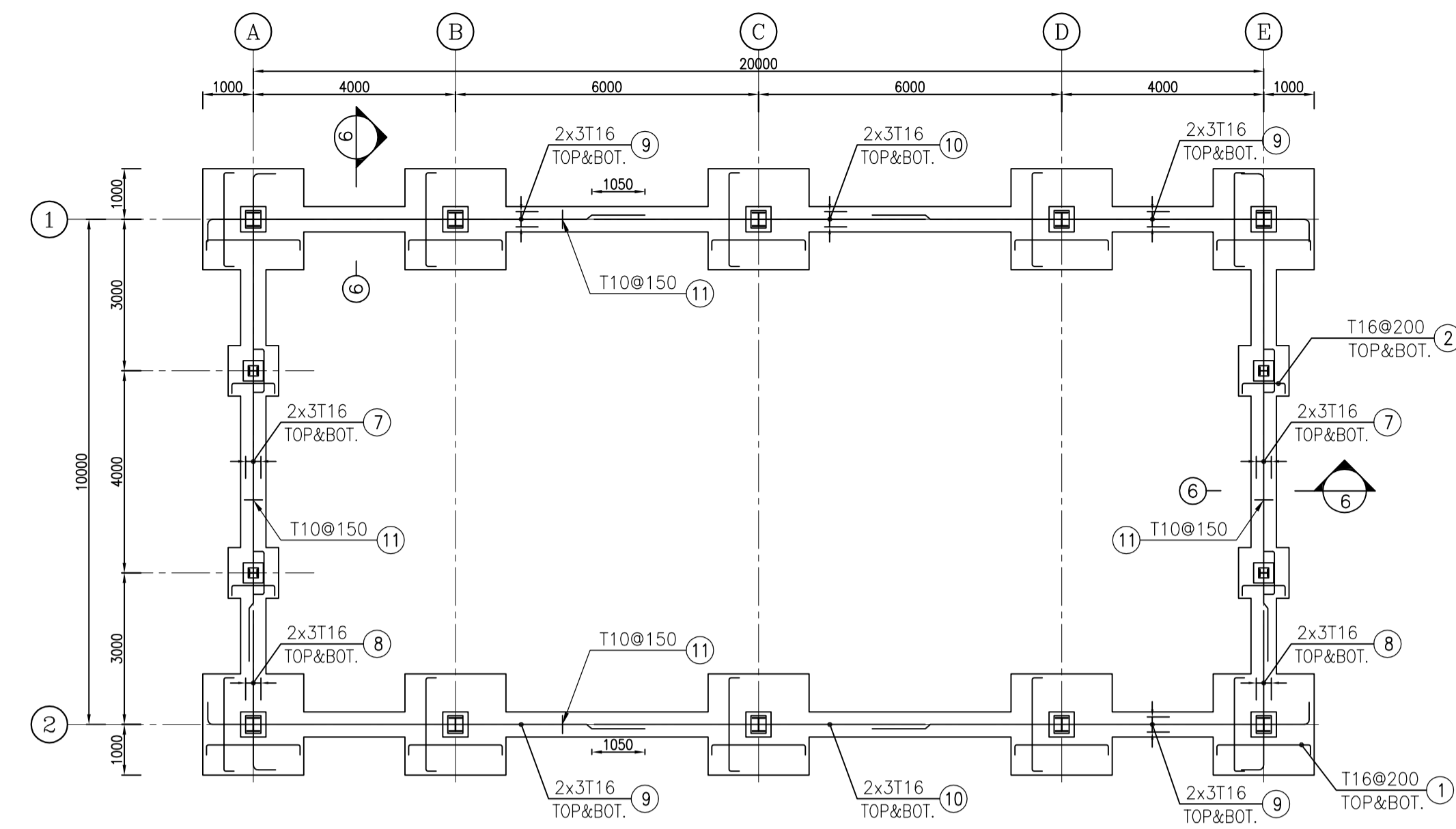
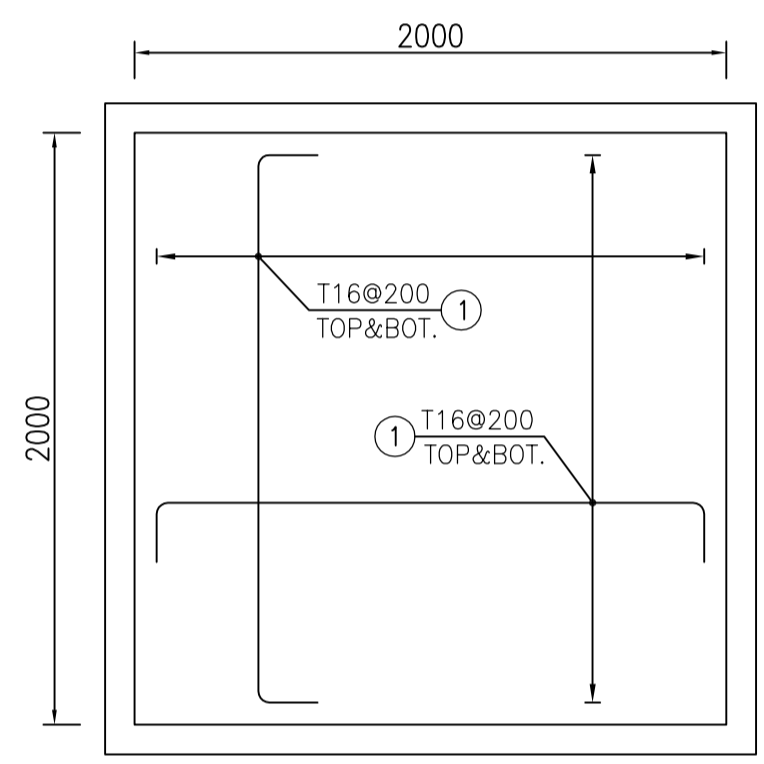


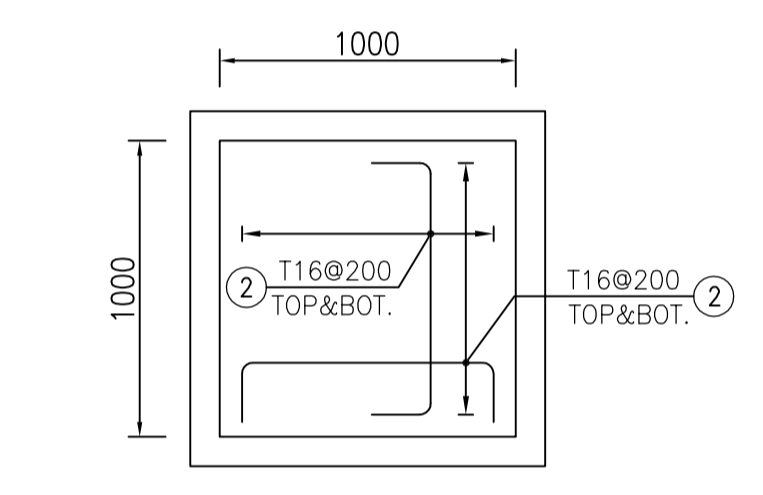
1:100 1 FOUNDATION FORMWORK PLAN



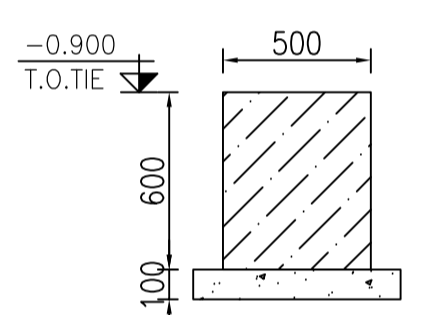
1:100 2 FOUNDATION REINFORCEMENT PLAN



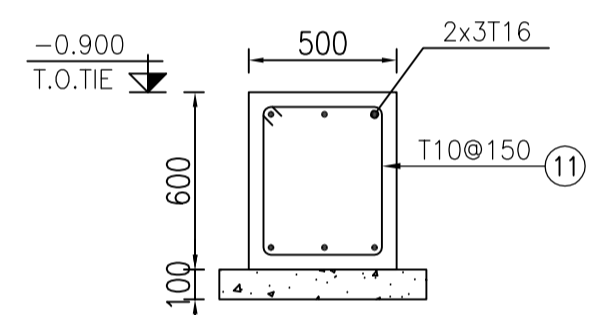
1:25 3 FOUNDATION PLAN OF F1 REINFORCEMENT



1:25 4 FOUNDATION PLAN OF F2 REINFORCEMENT



1:25 5 TIE BEAM FORMWORK



1:25 6 TIE BEAM REINFORCEMENT

BAR BENDING SCHEDULE						
Pos	Spec.	Shape	L	No.	T10	T16
1	T16	250 1850 250	2.35	480		1128.0
2	T16	250 850 250	1.35	96		129.6
3	T16	250 1750 250	2.25	152		342.0
4	T10	400 400 100	1.80	130	234.0	
5	T10	300 300 100	1.40	52	72.8	
6	T10	100 400 100	0.60	200	120.0	
7	T16	250 9750 250	10.00	12		120.0
8	T16	250 3150 250	3.40	12		40.8
9	T16	250 8750 250	9.00	24		216.0
10	T16	250 6500 250	6.50	12		78.0
11	T10	450 350 100	1.80	222	399.6	
TOTAL LENGTH (m)					826.40	2054.40
UNIT WEIGHT (Kg/m)					0.617	1.578
WEIGHT (Kg)					509.88	3241.84
TOTAL WEIGHT (Kg)						3760 Kg.

- NOTES**
- 1) ALL ELEVATIONS AND COORDINATES ARE IN "m" AND DIMENSIONS ARE IN "mm" UNLESS OTHERWISE NOTED.
 - 2) ALL DIMENSIONS AND ELEVATIONS SHALL BE CHECKED BY THE CONTRACTOR PRIOR TO CONSTRUCTION.
 - 3) ACCORDING TO THE SPECIFICATION OF CONCRETE WORKS: "BK-GNR-PEDCO-000-ST-SP-0001" 28 DAYS CHARACTERISTIC COMPRESSIVE STRENGTH OF MAIN CONCRETE IS 30 MPa (ON CYLINDRICAL SPECIMEN)
 - 4) ACCORDING TO THE SPECIFICATION OF CONCRETE WORKS: "BK-GNR-PEDCO-000-ST-SP-0001" 28 DAYS CHARACTERISTIC COMPRESSIVE STRENGTH OF LEAN CONCRETE IS 15 MPa (ON CYLINDRICAL SPECIMEN)
 - 5) CONCRETE COVER OVER BARS SHALL BE 75mm FOR FOUNDATION AND 50mm FOR PEDESTALS.
 - 6) REINFORCING BARS SHALL BE S400 ACCORDING TO: ISIRI3132 AND INBC9 WITH MINIMUM TENSILE YIELD STRENGTH 400 N/mm²
 - 7) THE FIRST HOOP OF THE BEAM, COLUMN OR PEDESTAL SHALL BE LOCATED NOT MORE THAN 50mm FROM THE FACE OF FOUNDATION.
 - 8) REINFORCEMENT SHALL BE ADJUSTED LOCALLY TO SUIT THE RECESS OF ANCHOR BOLTS, HOLES AND OTHER EMBEDDED MATERIALS.
 - 9) UNDERGROUND CONCRETE SHALL BE PROTECTED AND COATED ACCORDING TO RELEVANT SPECIFICATION.
 - 10) PORTLAND CEMENT TYPE 2 SHALL BE USED FOR CONCRETE AND LEAN CONCRETE.
 - 11) FILL MATERIAL SHALL BE COMPACTED TO NOT LESS THAN 95% OF THE MAXIMUM DENSITY AS DETERMINED BY ASTM D-1557 (MODIFIED PROCTOR) METHOD.

±0.00 = +11.20(F.G.L)MSL

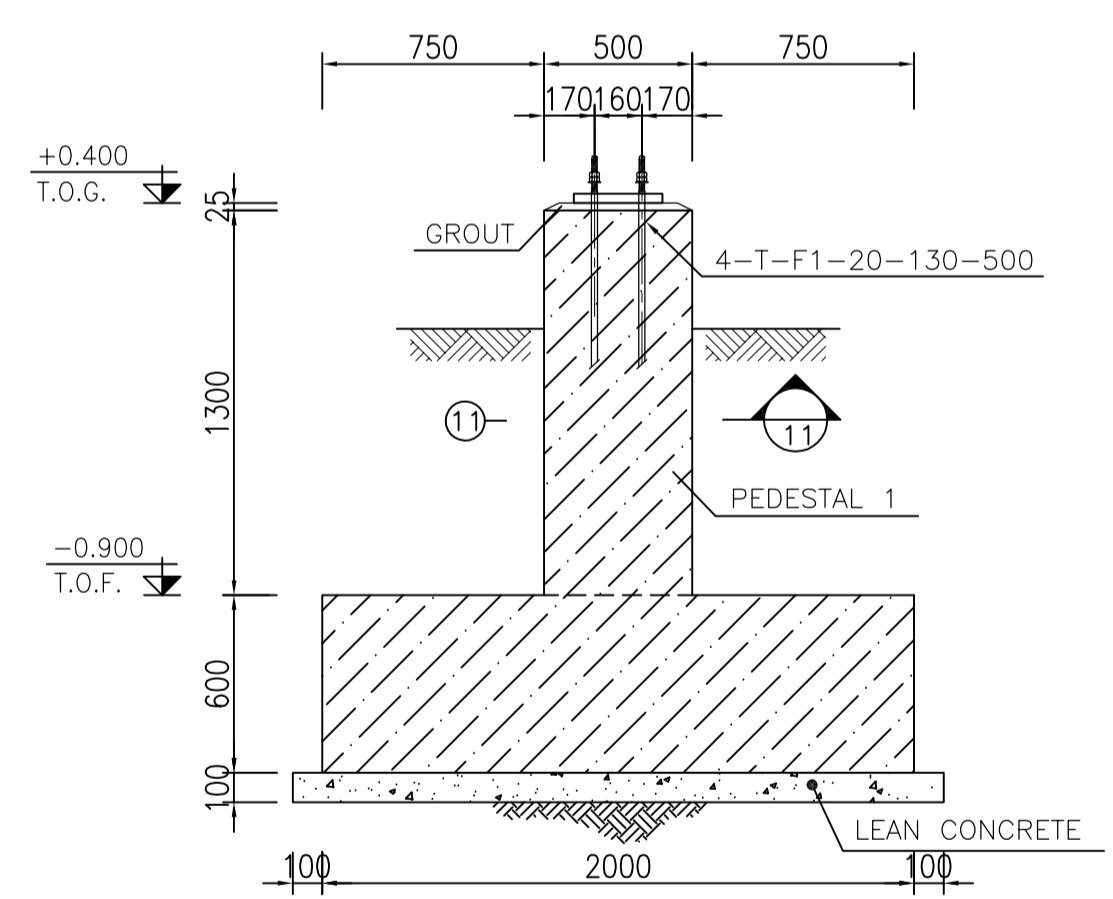
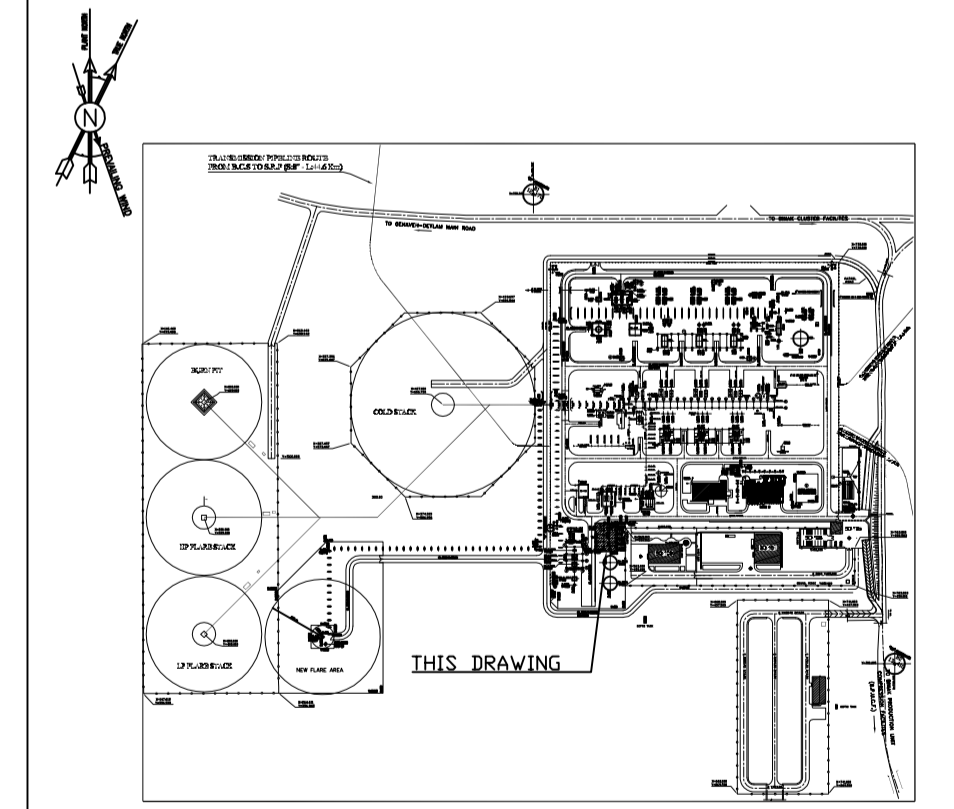
LEGEND

F.G.L. : FINISH GROUND LEVEL
T.O.G. : TOP OF GROUT
T.O.F. : TOP OF FOUNDATION
T.O.TIE : TOP OF TIE BEAM

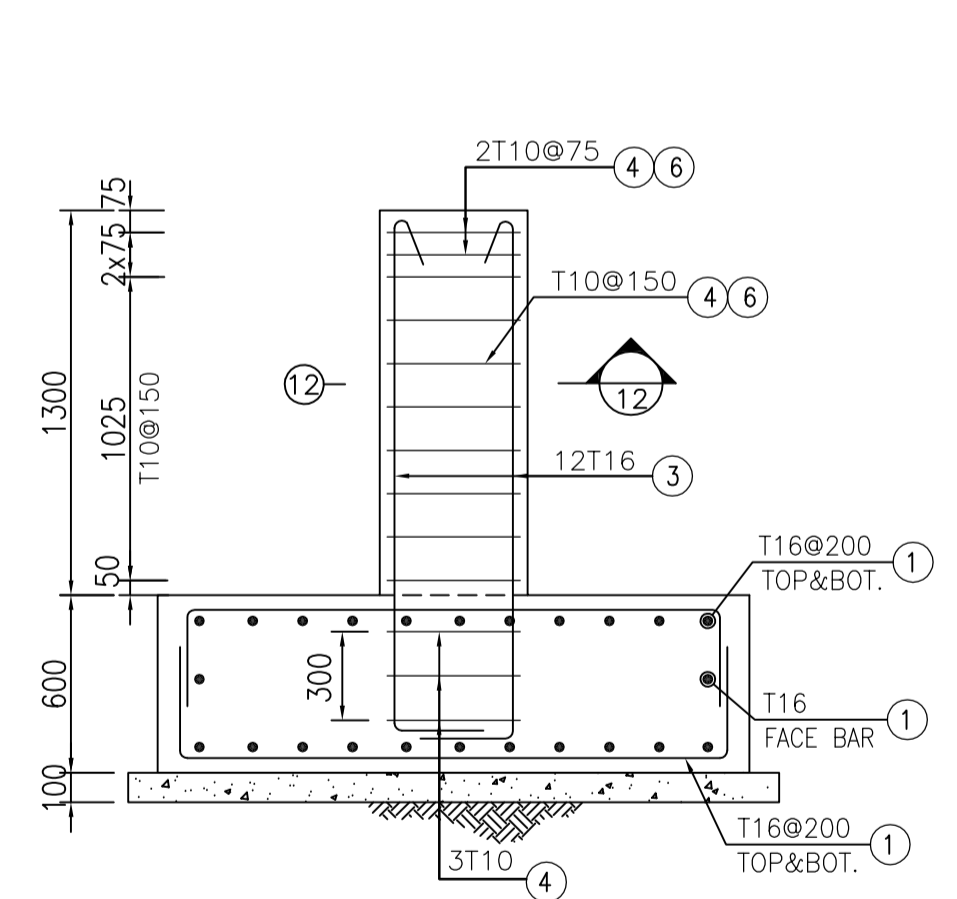
REINFORCED CONCRETE
LEAN CONCRETE
GROUND

REFERENCE DRAWING	DRG. No.
CALCULATION NOTE FOR FIRE WATER PUMP SHELTER	BK-GCS-PEDCO-120-ST-CN-0009
STRUCTURAL DRAWING FOR FIRE WATER PUMP SHELTER	BK-GCS-PEDCO-120-ST-DW-0066
ARCHITECTURAL DRAWING FOR FIRE WATER PUMP SHELTER	BK-GCS-PEDCO-120-AR-DW-0006
STANDARD DRAWING FOR ANCHOR BOLTS	BK-GNRAL-PEDCO-000-ST-DW-0002
GENERAL NOTES-REINFORCED CONCRETE STRUCTURES	BK-GNRAL-PEDCO-000-ST-DW-0012
UNIT PLOT PLAN DRAWING	BK-GCS-PEDCO-120-PL-PP-0001
GEOTECHNICAL INVESTIGATION REPORT FOR COMPRESSOR STATION	BK-GCS-PEDCO-120-GT-RT-0001
SPECIFICATION FOR GROUTING	BK-GNRAL-PEDCO-000-ST-SP-0004
SPECIFICATION FOR PAINTING	BK-GNRAL-PEDCO-000-PI-SP-0006

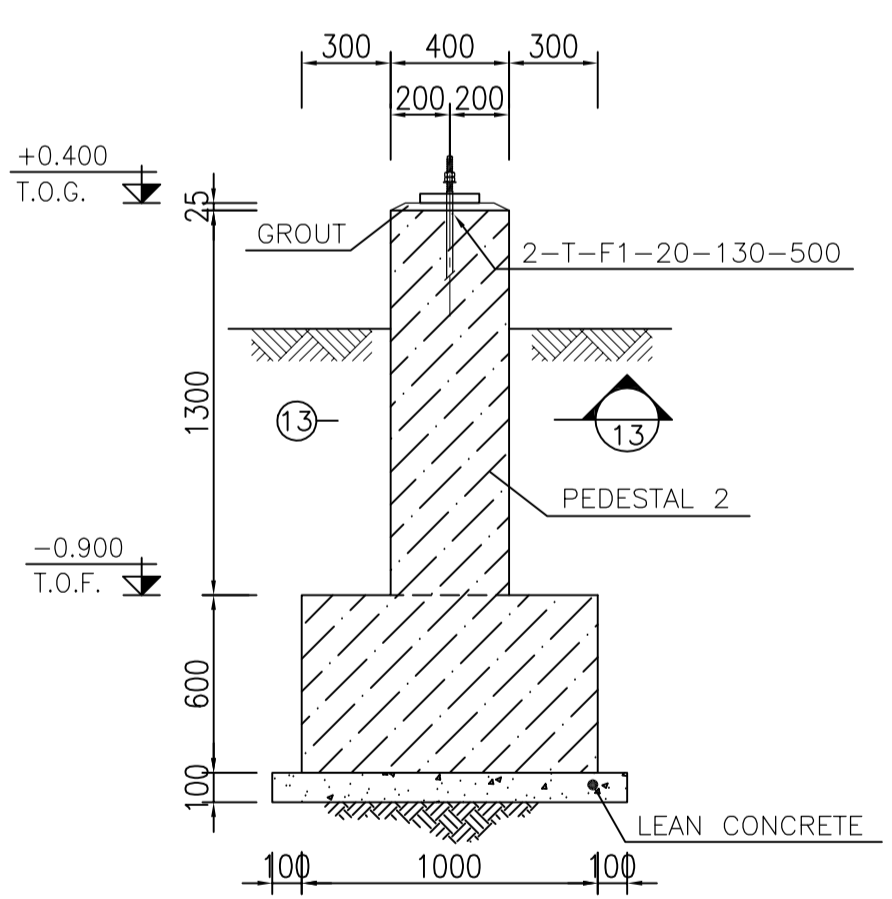
KEY PLAN



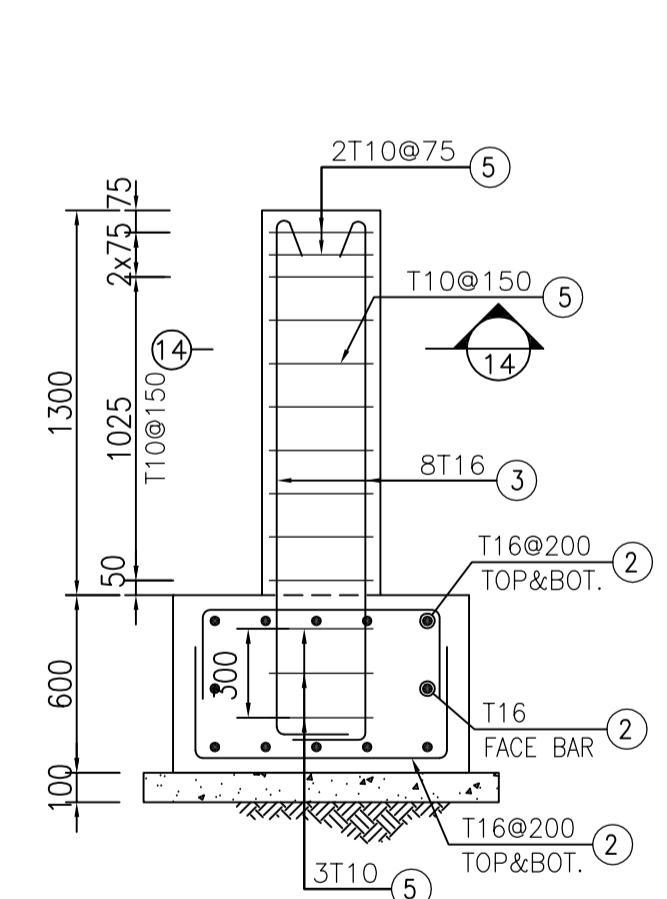
1:25 7 TYPICAL SEC. OF FOUND. F1 FORMWORK



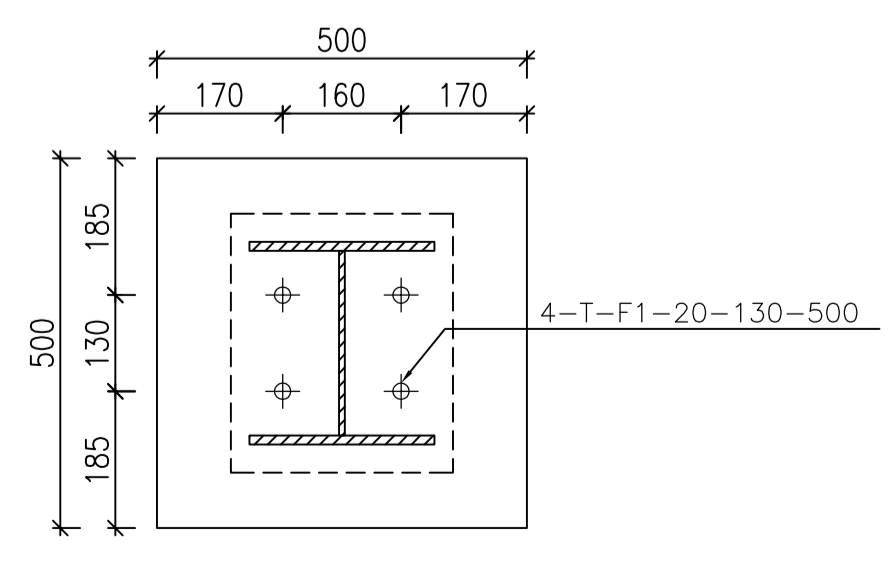
1:25 8 TYPICAL SEC. OF FOUND. F1 REINFORCEMENT



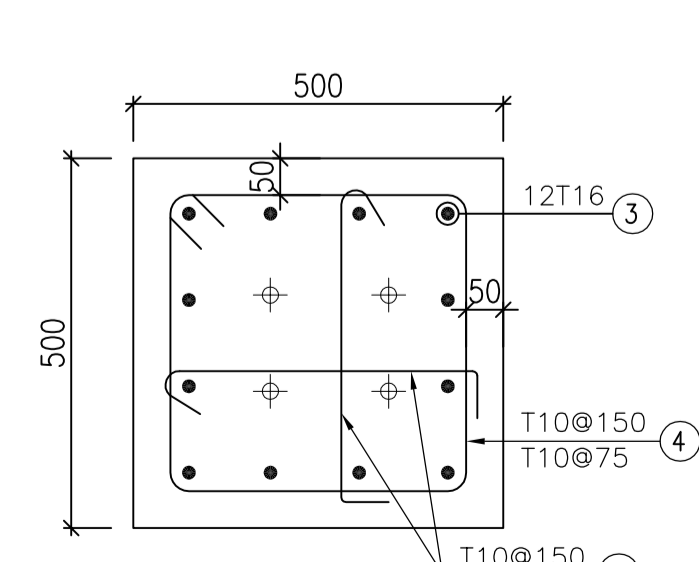
1:25 9 TYPICAL SEC. OF FOUND. F2 FORMWORK



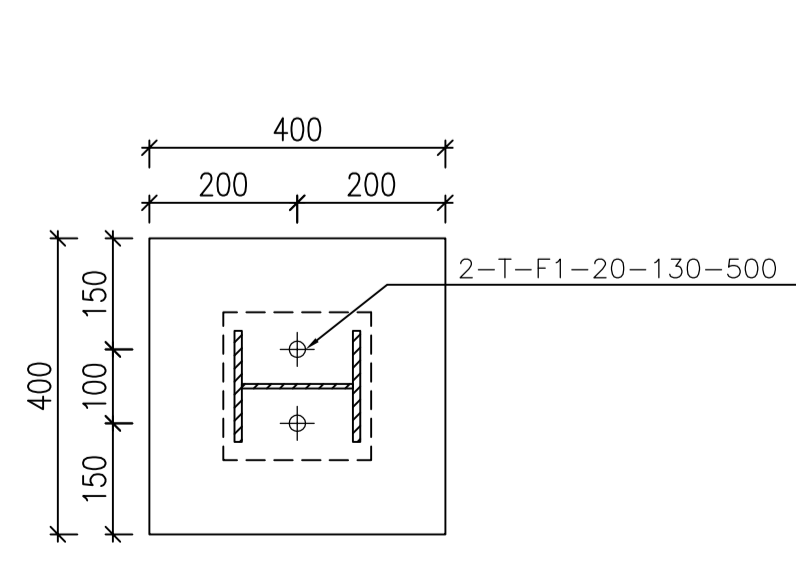
1:25 10 TYPICAL SEC. OF FOUND. F2 REINFORCEMENT



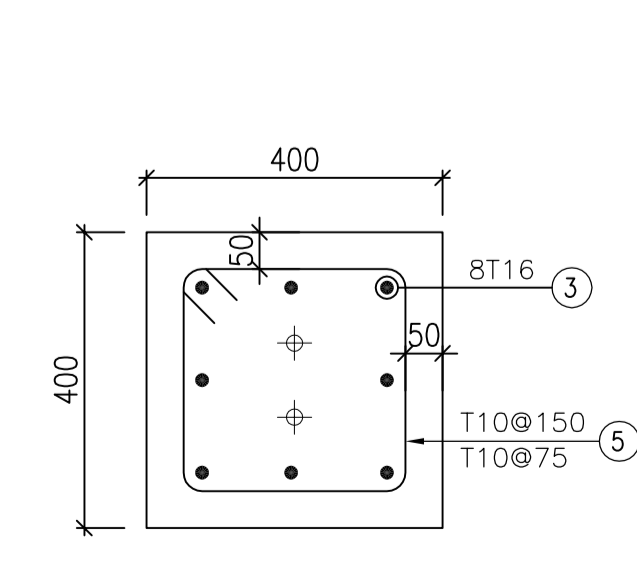
1:10 11 PEDESTAL 1 FORMWORK



1:10 12 PEDESTAL 1 REINFORCEMENT



1:10 13 PEDESTAL 2 FORMWORK



1:10 14 PEDESTAL 2 REINFORCEMENT

SCALE	SIZE	DRAWING NO.	SHEET NO.	REV.	BUDGET REF.	LOCATION	SIZE	CLASS	SERIAL NO.	SHEET	REVISION
AS SHOWN	A1	BK-GCS-PEDCO-120-ST-DW-0065	1 OF 1	D00	053-073-9184	F	4	Q	709202	1	D00

REV.	DESCRIPTION	BY	DATE	CHECKED	REV. APPR.
***	*****	**	*****	**	*****

PROJECT NAME: BINAK OILFIELD DEVELOPMENT/SURFACE FACILITIES GAS COMPRESSOR STATION

PROJECT NO.: 971020

EPC CONTRACTOR: HIRGAN ENERGY - DESIGN & INSPECTION COMPANIES

EPD/EPC CONTRACTOR (GC): PETROIRAN DEVELOPMENT COMPANY

DRAWING TITLE: FOUNDATION DRAWING FOR FIRE WATER PUMP SHELTER

NO CONSTRUCTION PERMITTED UNLESS DRAWING APPROVED

APPROVED FOR CONSTRUCTION BY: DATE:

اسم و کلیه نسخ این نقشه و حق اقتباس متعلق به شرکت ملی مناطق نفت خیز جنوب میباشد.
THE ORIGINAL AND ALL COPIES OF THIS DRAWING TOGETHER WITH THE COPYRIGHT THEREIN ARE THE SOLE PROPERTY OF N.I.S.O.C./ FIELDS