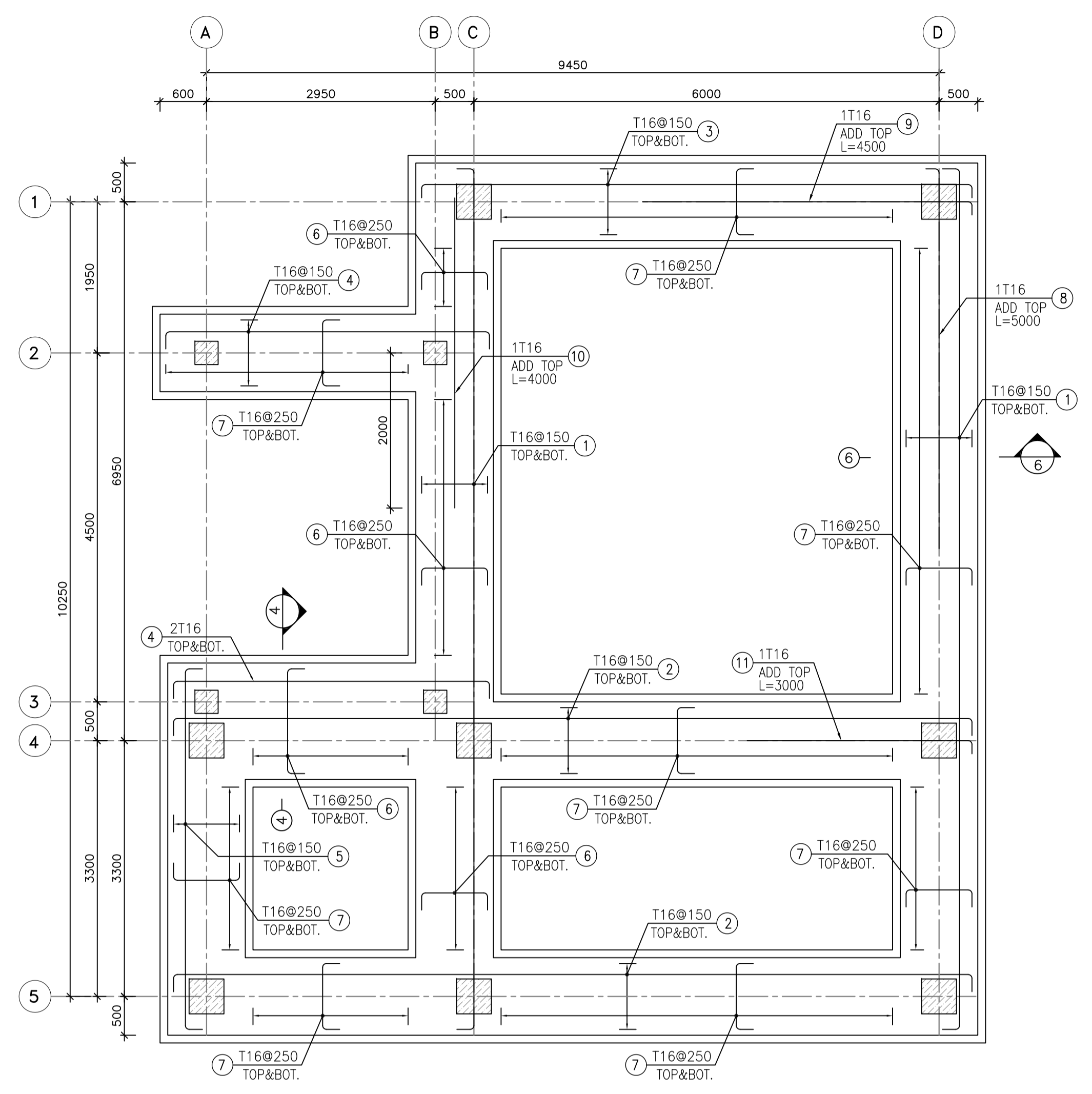
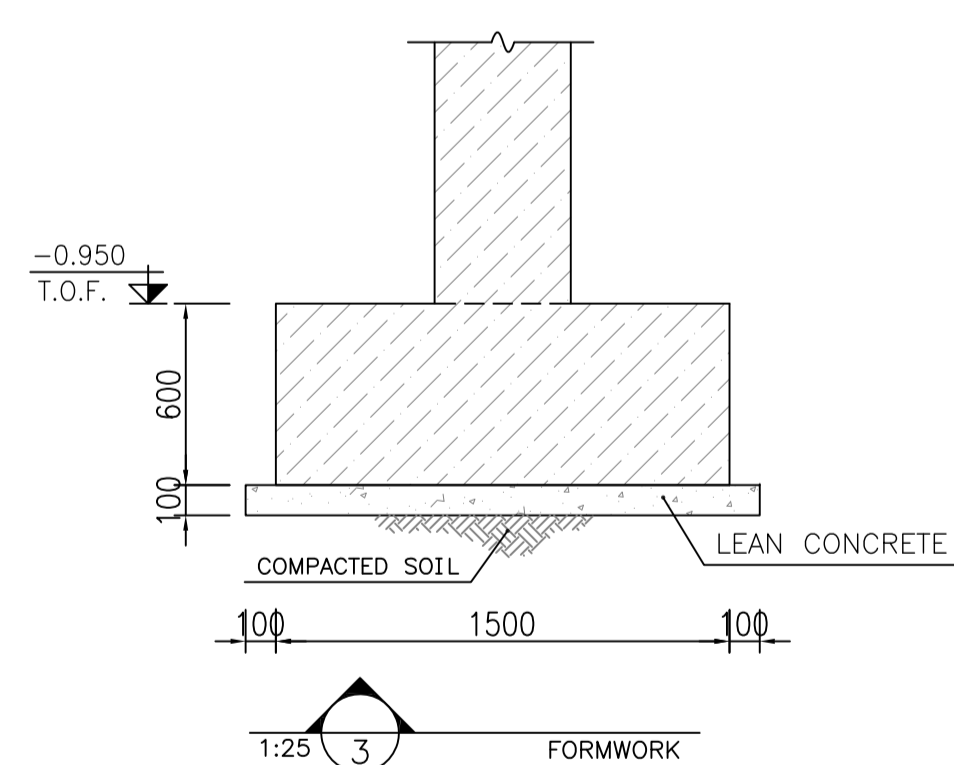


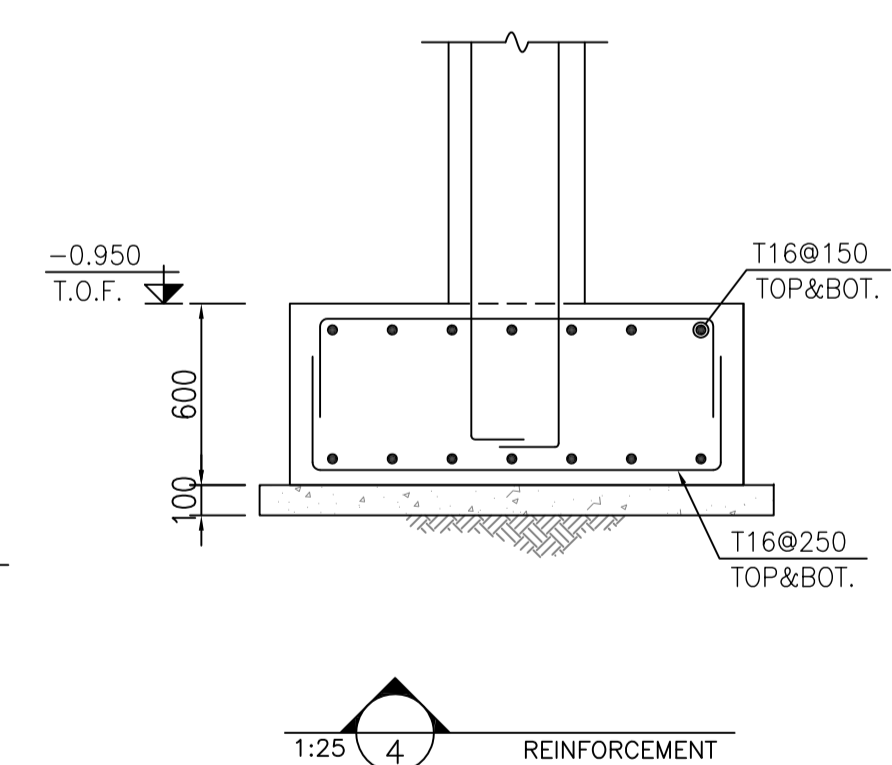
1 FOUNDATION FORMWORK PLAN  
1:50



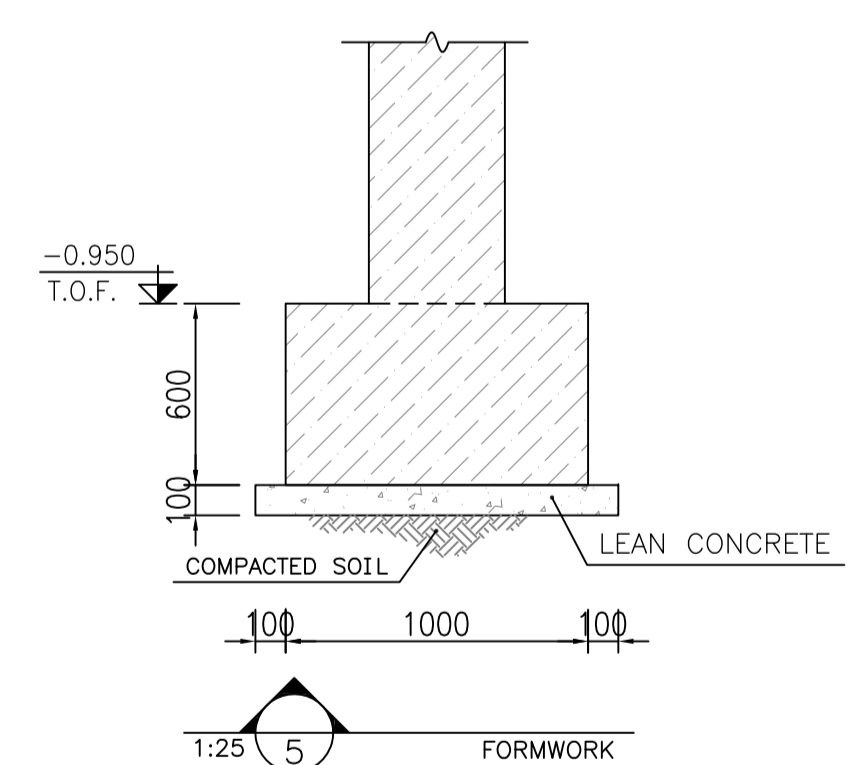
2 FOUNDATION REINFORCEMENT PLAN  
1:50



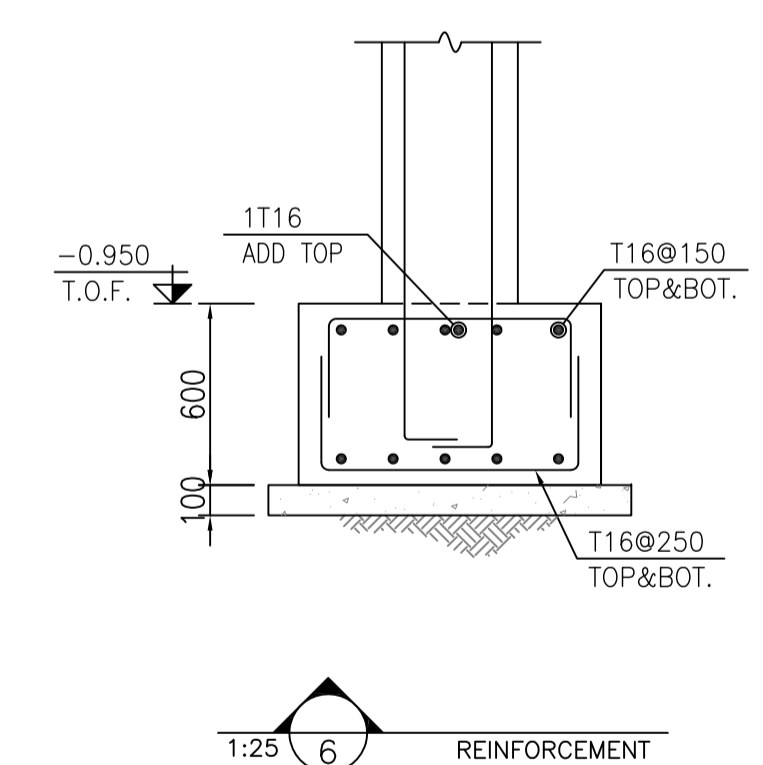
3 FORMWORK  
1:25



4 REINFORCEMENT  
1:25



5 FORMWORK  
1:25



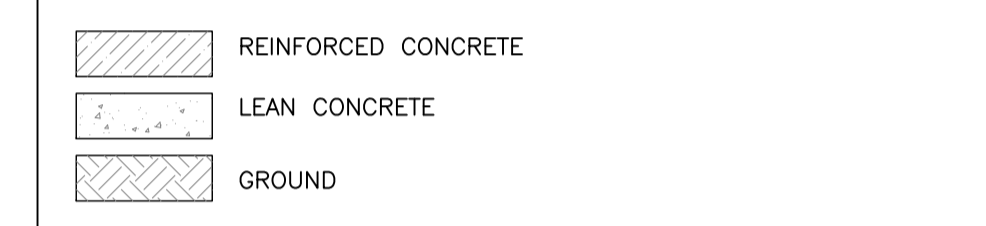
6 REINFORCEMENT  
1:25

- NOTES**
- 1) ALL ELEVATIONS AND COORDINATES ARE IN "m" AND DIMENSIONS ARE IN "mm" UNLESS OTHERWISE NOTED.
  - 2) ALL DIMENSIONS AND ELEVATIONS SHALL BE CHECKED BY THE CONTRACTOR PRIOR TO CONSTRUCTION.
  - 3) ACCORDING TO THE SPECIFICATION OF CONCRETE WORKS: "BK-GNRL-PEDCO-000-ST-SP-0001", 28 DAYS CHARACTERISTIC COMPRESSIVE STRENGTH OF MAIN CONCRETE IS 30 MPa
  - 4) ACCORDING TO THE SPECIFICATION OF CONCRETE WORKS: "BK-GNRL-PEDCO-000-ST-SP-0001", 28 DAYS CHARACTERISTIC COMPRESSIVE STRENGTH OF LEAN CONCRETE IS 15 MPa
  - 5) REINFORCING BARS SHALL BE S400 ACCORDING TO: ISIRI3132 AND INBC9 WITH MINIMUM TENSILE YIELD STRENGTH 400 N/mm<sup>2</sup>
  - 6) CONCRETE COVER OVER BARS SHALL BE 75mm FOR FOUNDATION AND 50mm FOR BEAMS & COLUMNS.
  - 7) UNDERGROUND CONCRETE SHALL BE PROTECTED AND COATED ACCORDING TO RELEVANT SPECIFICATION.
  - 8) CEMENT TYPE 2 SHALL BE USED ACCORDING TO GEOTECHNICAL REPORT SUGGESTION.
  - 9) FILL MATERIAL SHALL BE COMPACTED TO NOT LESS THAN 95% OF THE MAXIMUM DENSITY AS DETERMINED BY ASTM D-1557 (MODIFIED PROCTOR) METHOD.

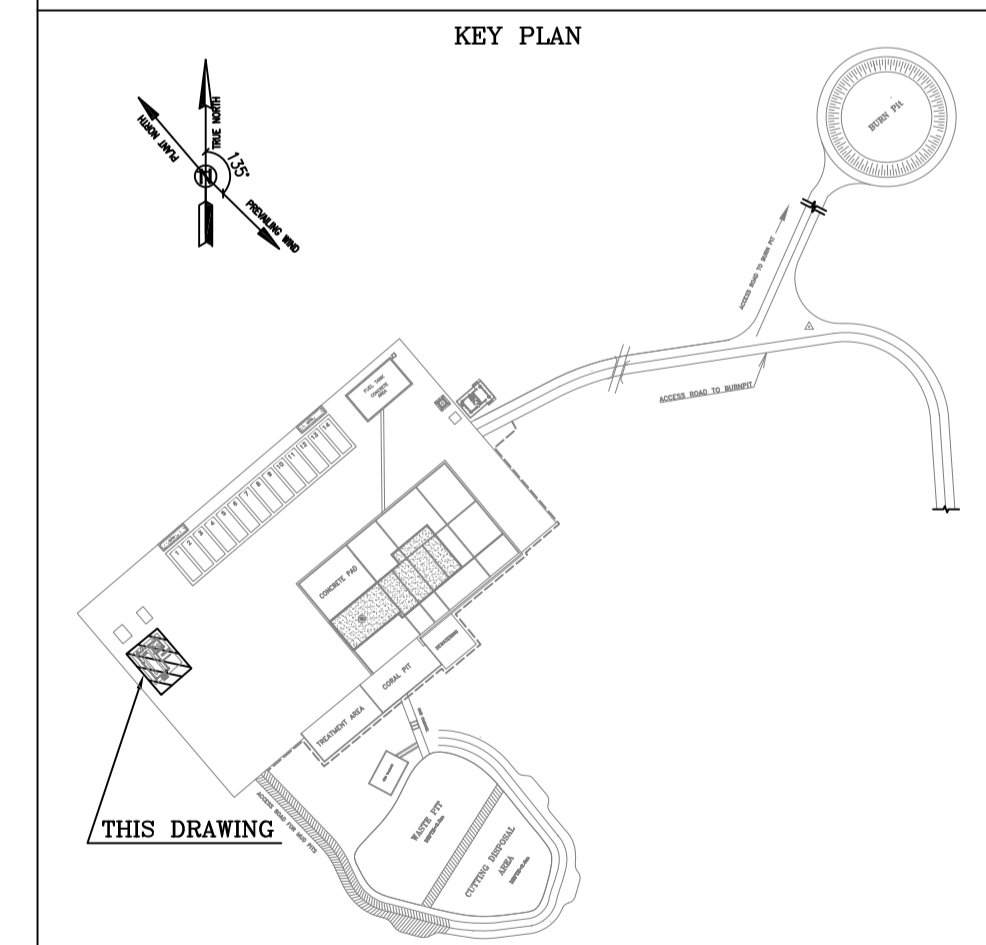
±0.00 = +26.00(F.G.L)MSL

**LEGEND**

F.G.L. : FINISH GROUND LEVEL  
T.O.F. : TOP OF FOUNDATION



REFERENCE DRAWING	DRG. No.
ARCHITECTURAL DRAWING FOR SWITCHGEAR BUILDING OF WELLPADS-W007S	BK-W007S-PEDCO-110-AR-DW-0003
STRUCTURAL DRAWING FOR SWITCHGEAR BUILDING FOR WELLPADS-W007S	BK-W007S-PEDCO-110-ST-DW-0011
GENERAL NOTES-REINFORCED CONCRETE STRUCTURES	BK-GNRL-PEDCO-000-ST-DW-0012
PLOT PLAN DRAWING -W007S	BK-W007S-PEDCO-110-PI-PY-0002
GENERAL CIVIL LAYOUT- W007S	BK-W007S-PEDCO-110-CV-PY-0001



REV.	DATE	DESCRIPTION	BY	DATE	BY	DATE				
DOO	AUG.2023	IFC	R.BERLOUE	M.PAKHARIAN	A.M.MOHSSENI	**				
REV.	DATE	P.O.I.S	PREP.	CHK.	APP.	AUT.				
PROJECT NAME: BINAK OILFIELD DEVELOPMENT/SURFACE FACILITIES GAS COMPRESSOR STATION										
PROJECT NO.: 971020										
EPC CONTRACTOR:			EPD/EPC CONTRACTOR (GC):							
DRAWING TITLE: FOUNDATION DRAWING FOR SWITCHGEAR BUILDING FOR WELLPADS - W007S										
NO CONSTRUCTION PERMITTED UNLESS DRAWING APPROVED										
APPROVED FOR CONSTRUCTION BY: DATE:										
SCALE	SIZE	DRAWING NO.	SHEET NO.	REV.	BUDGET REF.	LOCATION	SIZE CLASS	SERIAL NO.	SHEET	REVISION
AS SHOWN	A1	BK-W007S-PEDCO-110-ST-DW-0010	1 OF 1	D00	053-073-9184	F	4	Q	708060	1