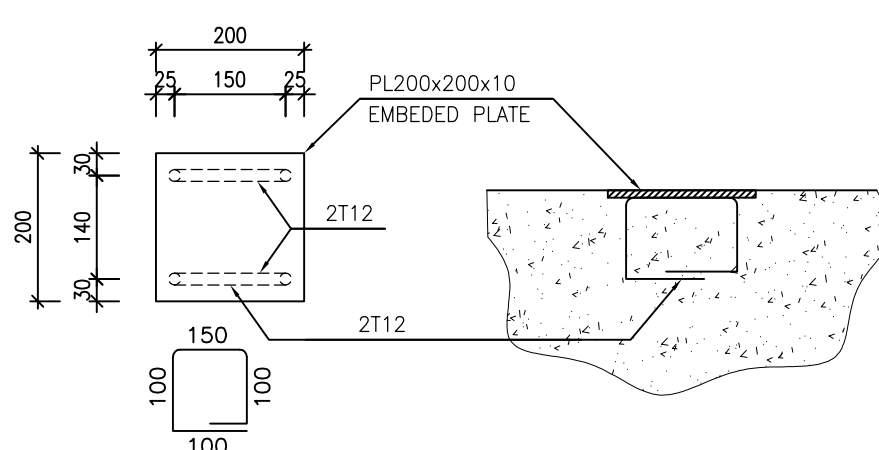
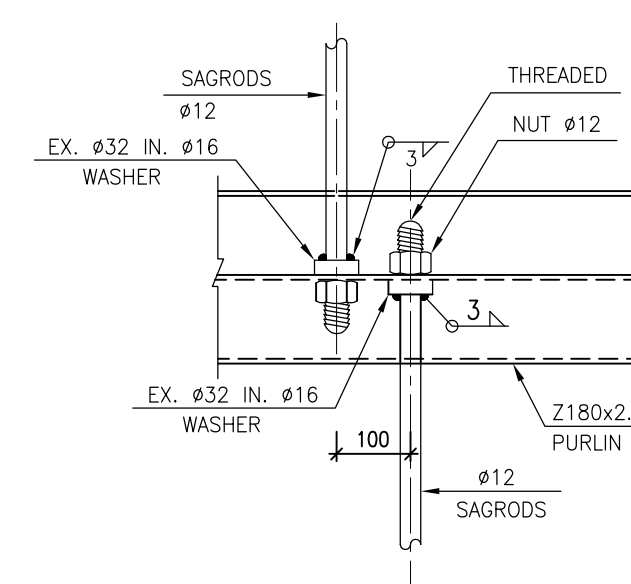
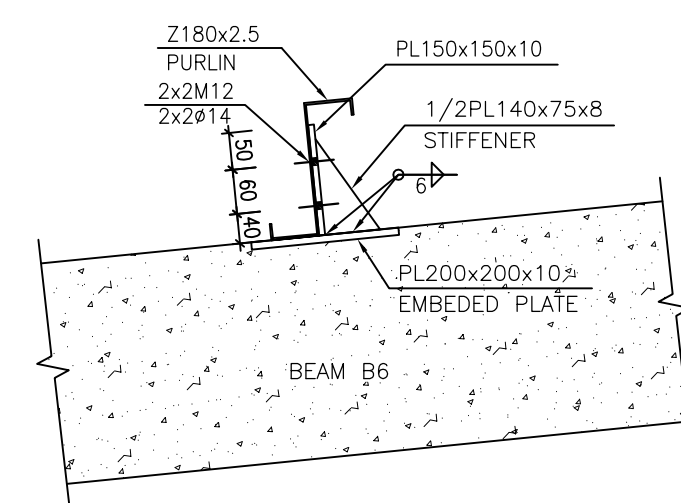
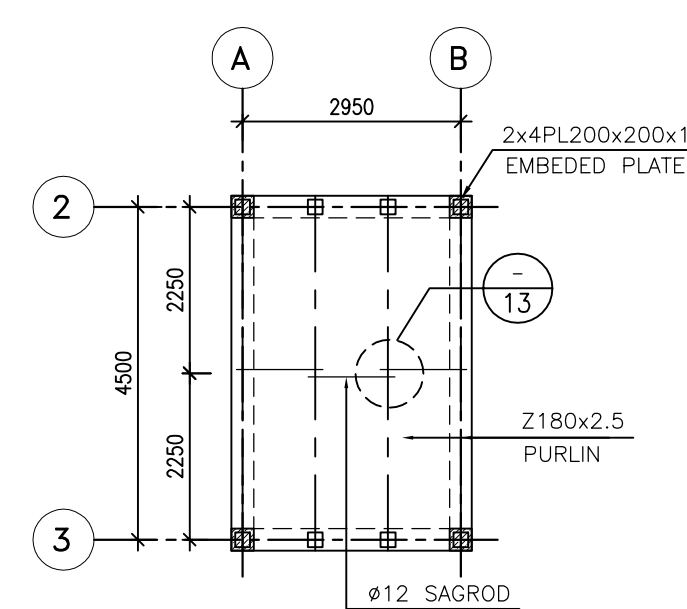
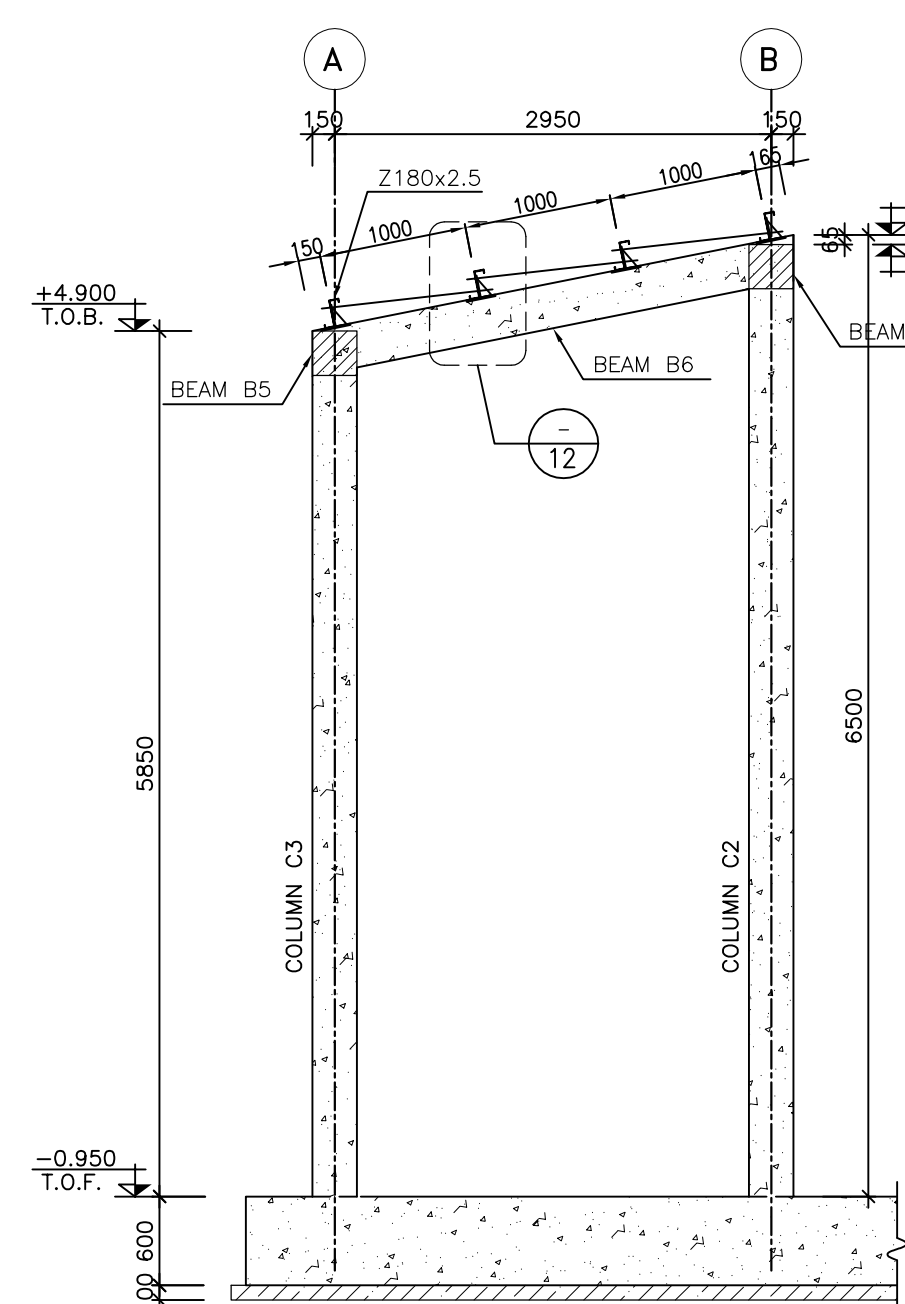
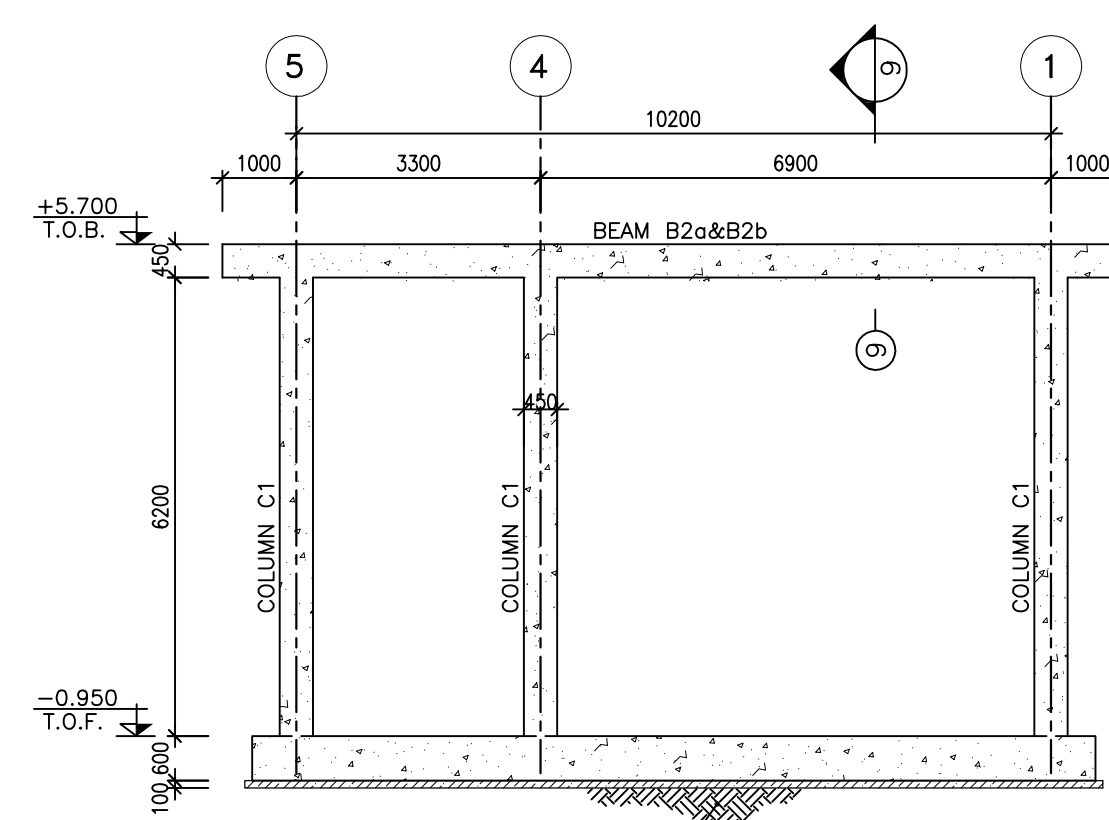
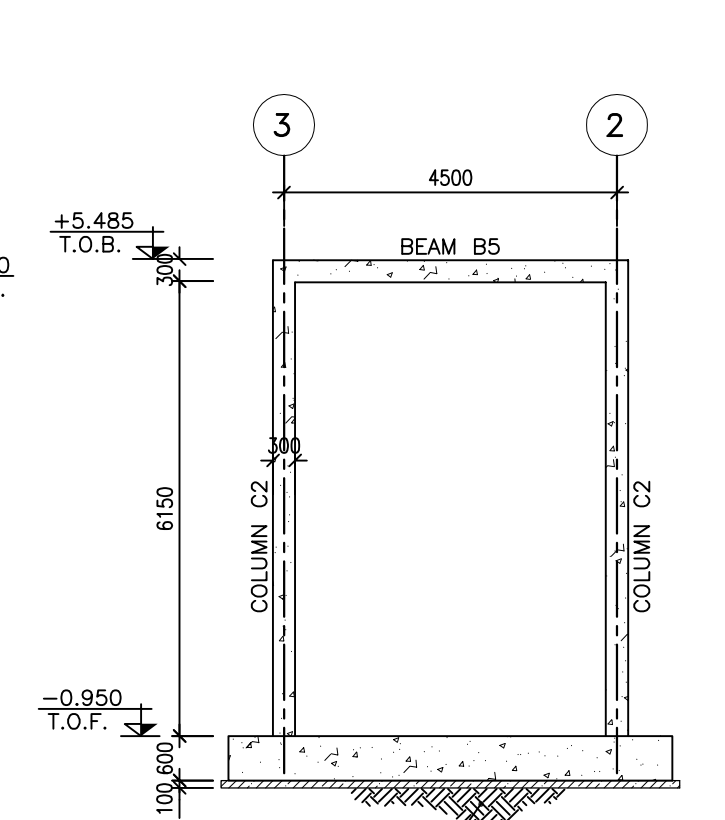
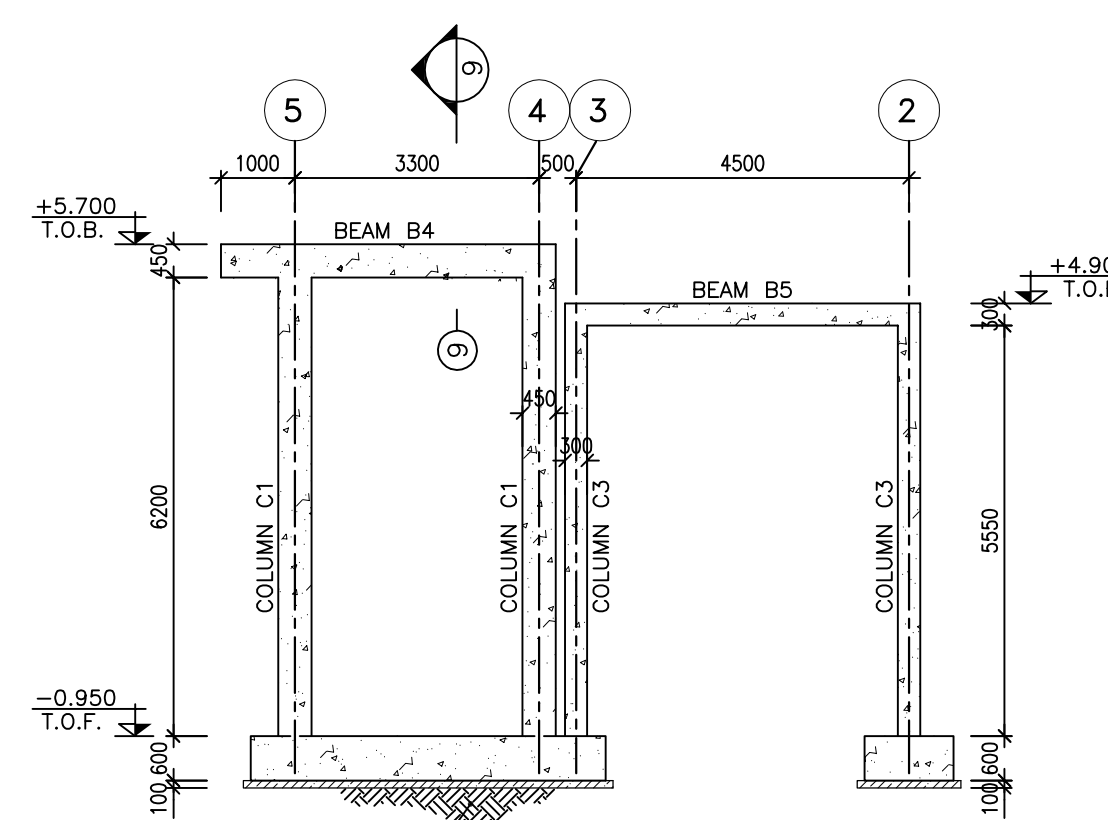
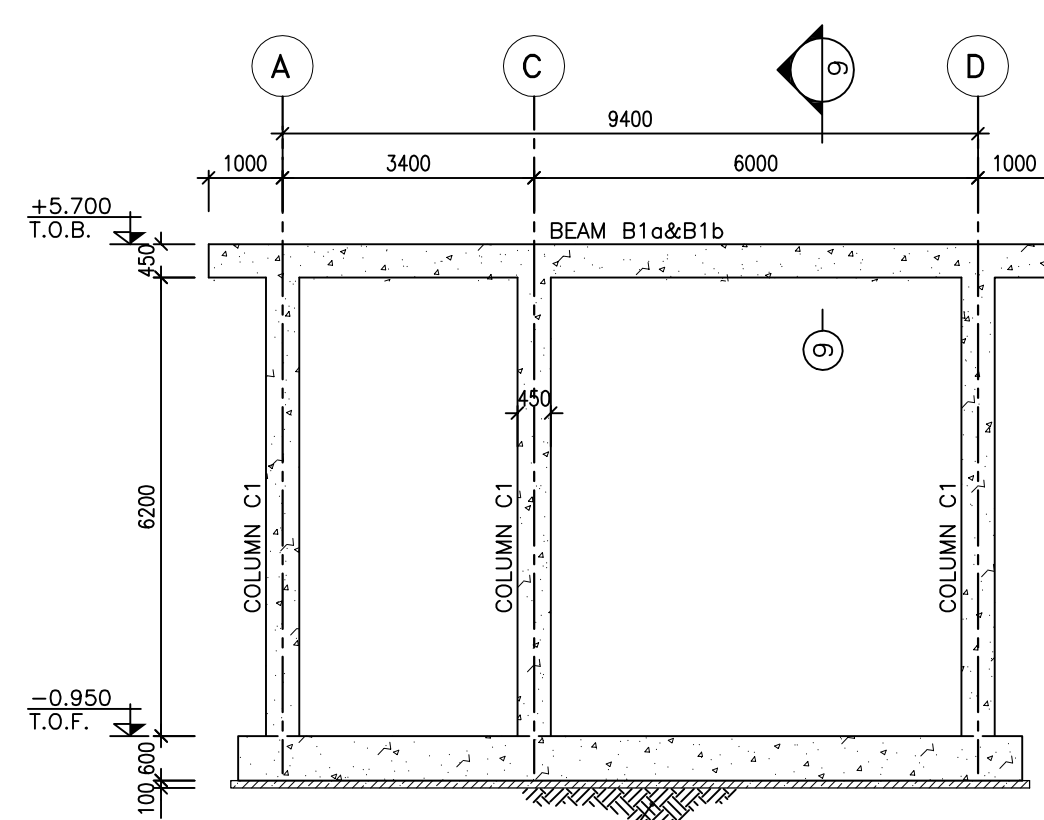
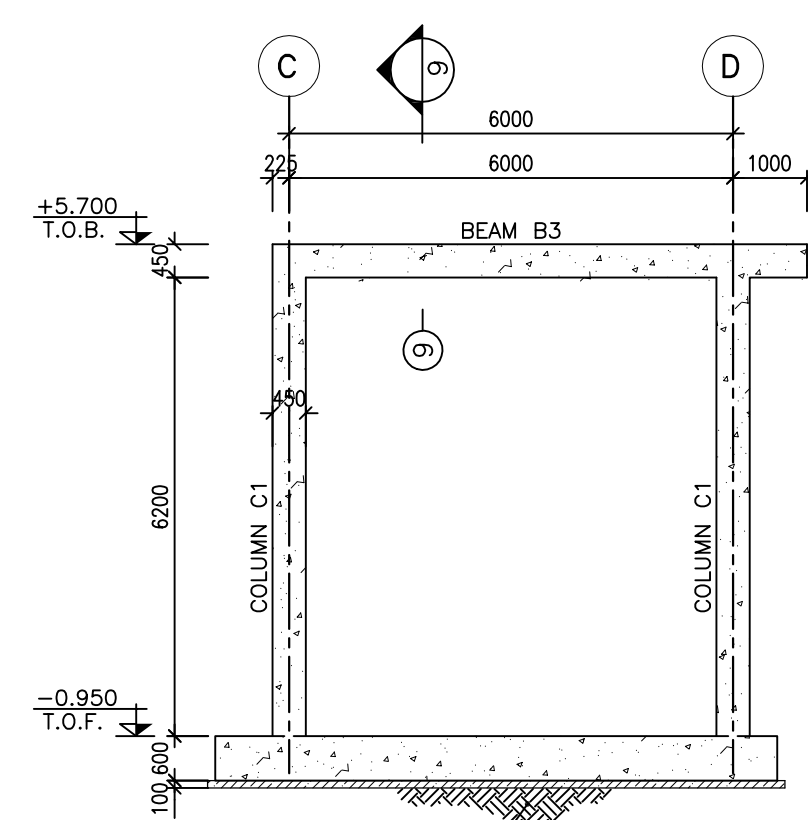
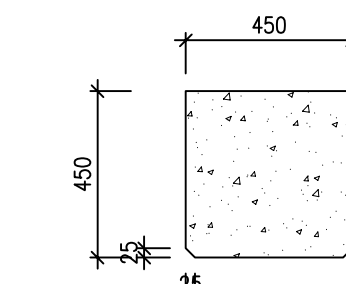
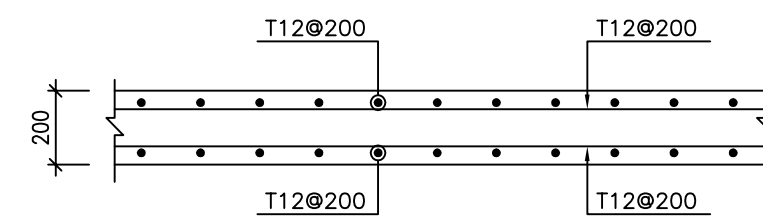
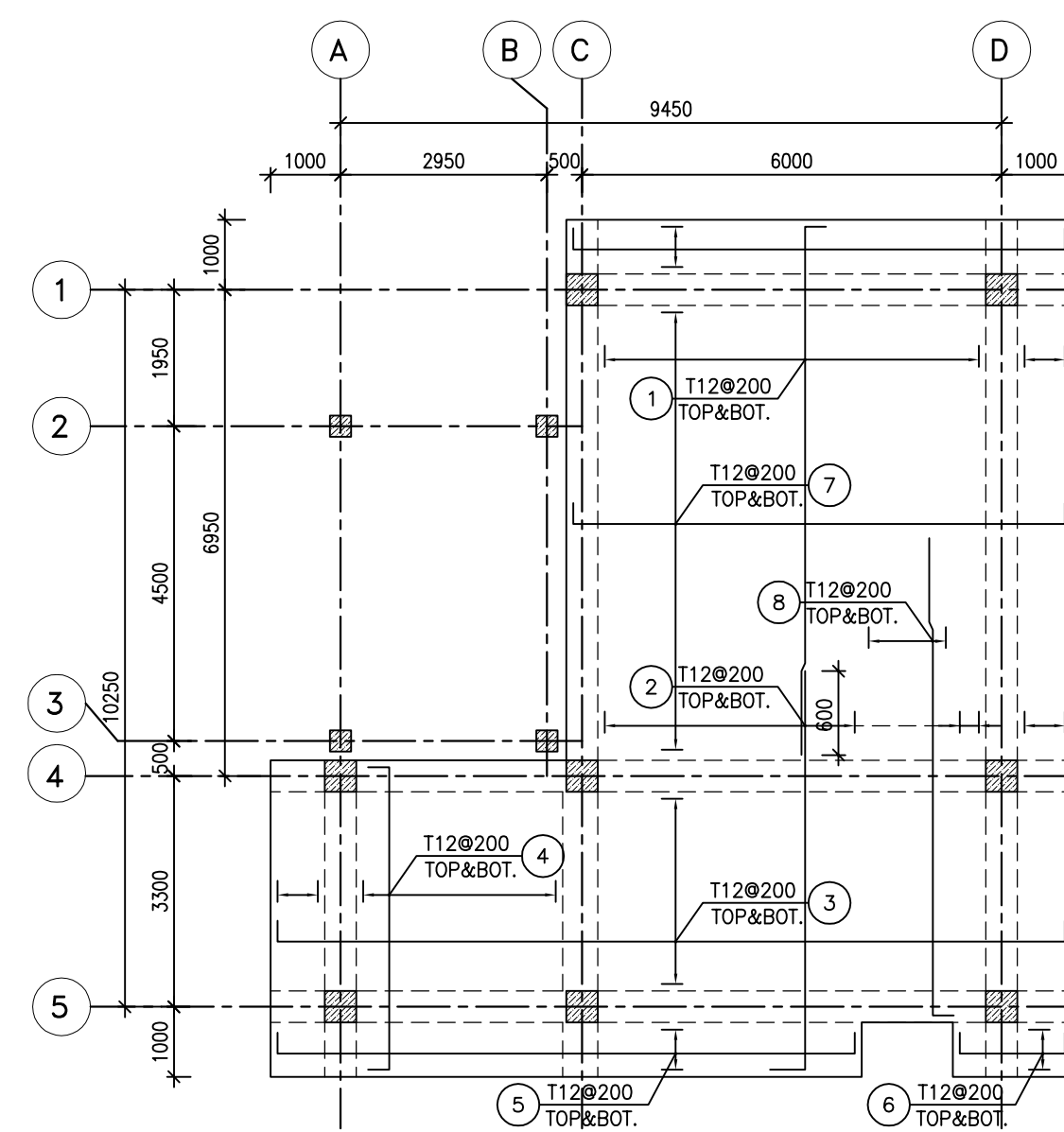
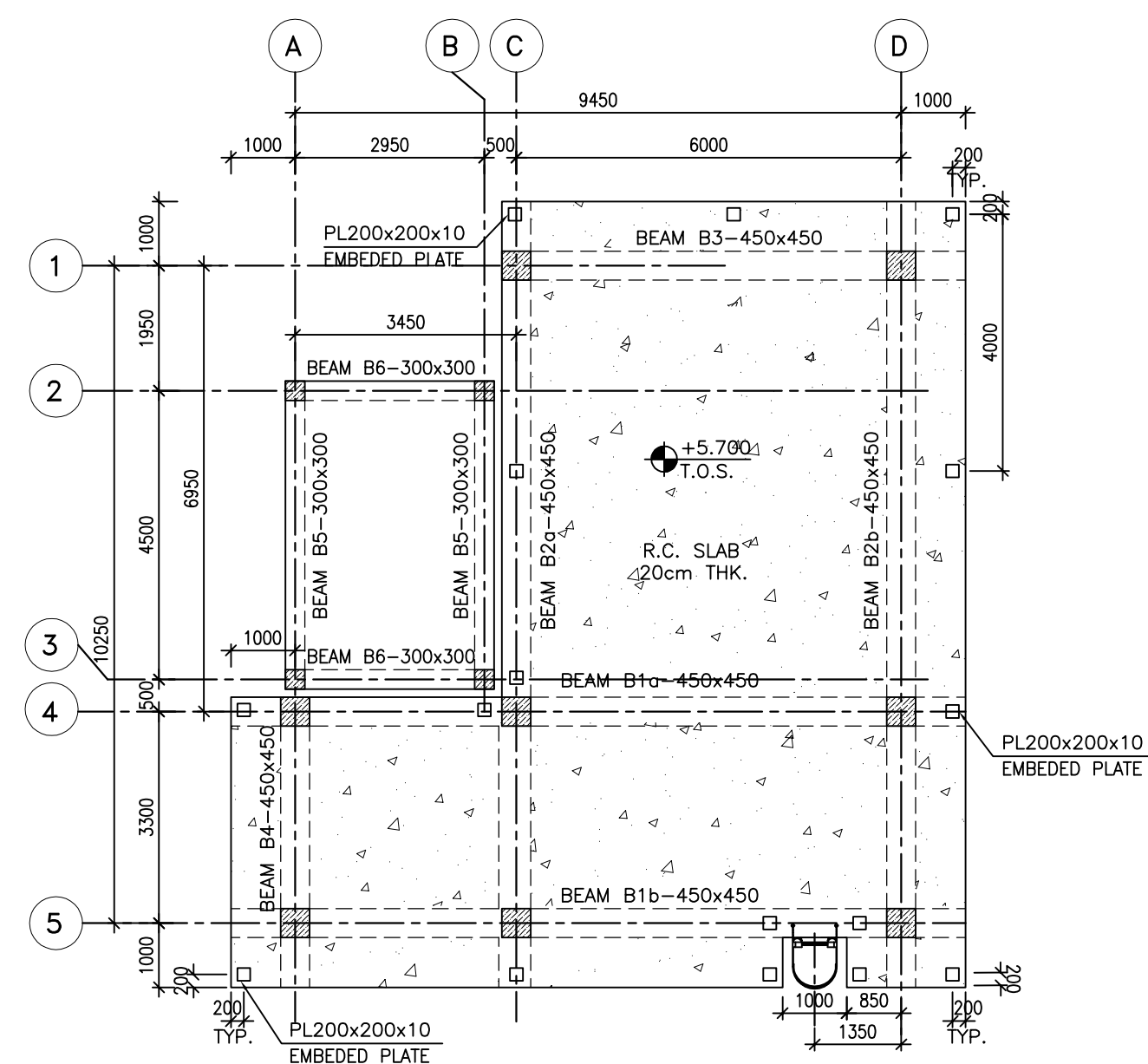
[illegible]






- | NOTES | |
|-------|--|
| 1) | ALL ELEVATIONS AND COORDINATES ARE IN "m" AND DIMENSIONS ARE IN "mm" UNLESS OTHERWISE NOTED. |
| 2) | ALL DIMENSIONS AND ELEVATIONS SHALL BE CHECKED BY THE CONTRACTOR PRIOR TO CONSTRUCTION. |
| 3) | ACCORDING TO THE SPECIFICATION OF CONCRETE WORKS:
"BK-GNRL-PEDCO-000-ST-SP-0001",28 DAYS CHARACTERISTIC COMPRESSIVE STRENGTH OF MAIN CONCRETE IS 30 MPa |
| 4) | ACCORDING TO THE SPECIFICATION OF CONCRETE WORKS:
"BK-GNRL-PEDCO-000-ST-SP-0001",28 DAYS CHARACTERISTIC COMPRESSIVE STRENGTH OF LEAN CONCRETE IS 15 MPa |
| 5) | REINFORCING BARS SHALL BE S400 ACCORDING TO: ISIRI3132 AND INBC9 WITH MINIMUM TENSILE YIELD STRENGTH 400 N/mm ² |
| 6) | CONCRETE COVER OVER BARS SHALL BE 75mm FOR FOUNDATION AND 50mm FOR BEAMS & COLUMNS. |
| 7) | UNDERGROUND CONCRETE SHALL BE PROTECTED AND COATED ACCORDING TO RELEVANT SPECIFICATION. |
| 8) | CEMENT TYPE 2 SHALL BE USED ACCORDING TO GEOTECHNICAL REPORT SUGGESTION. |

±0.00 = +125.62 MSL

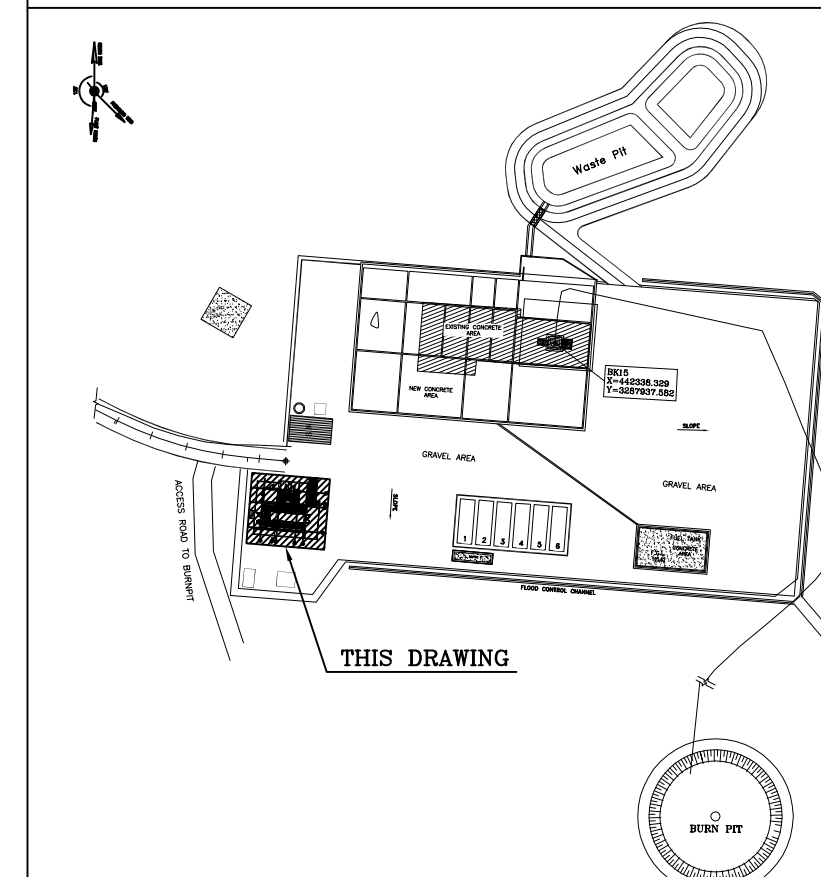
LEGEND

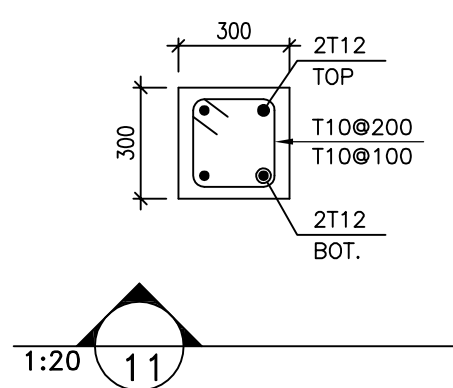
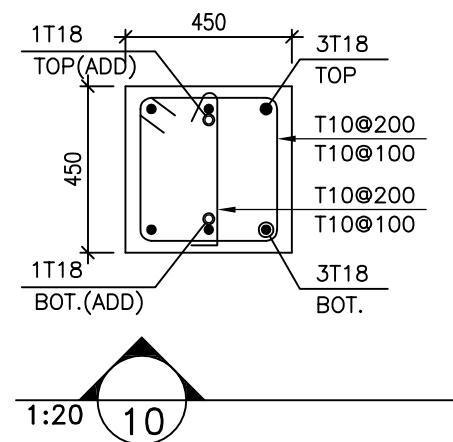
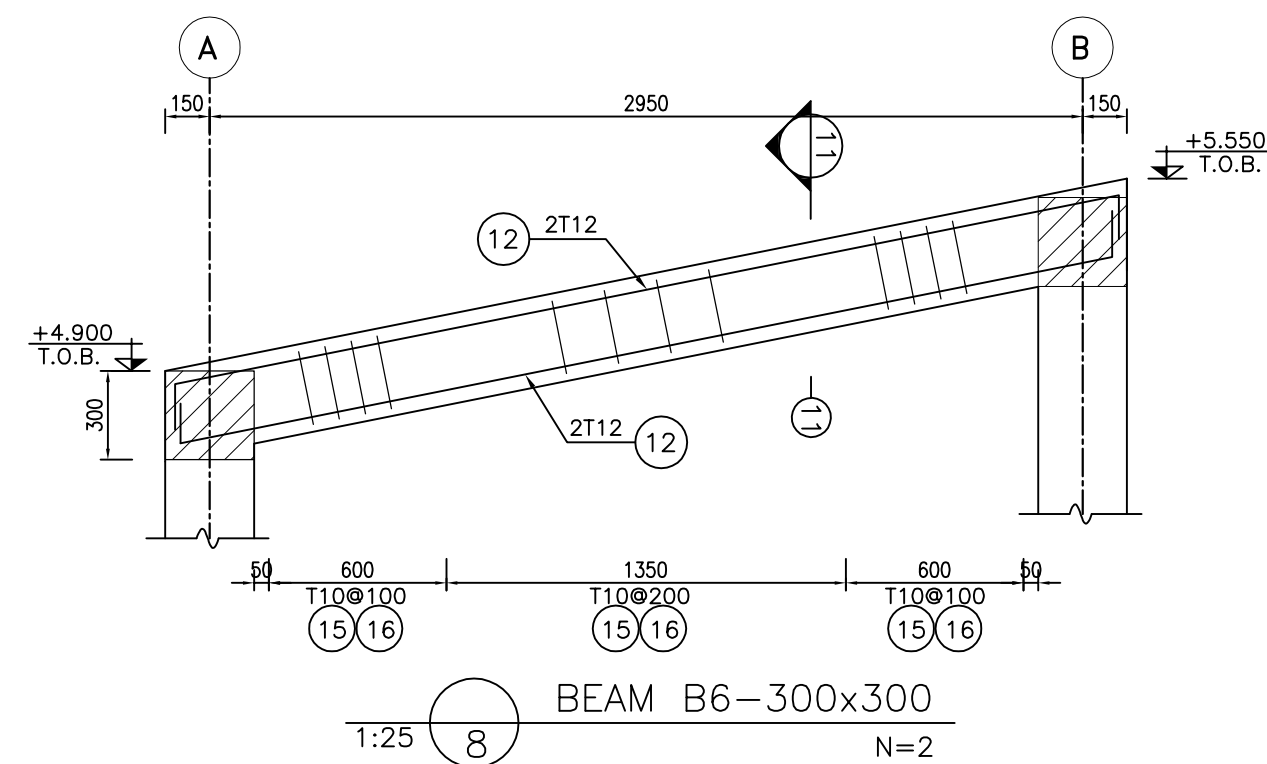
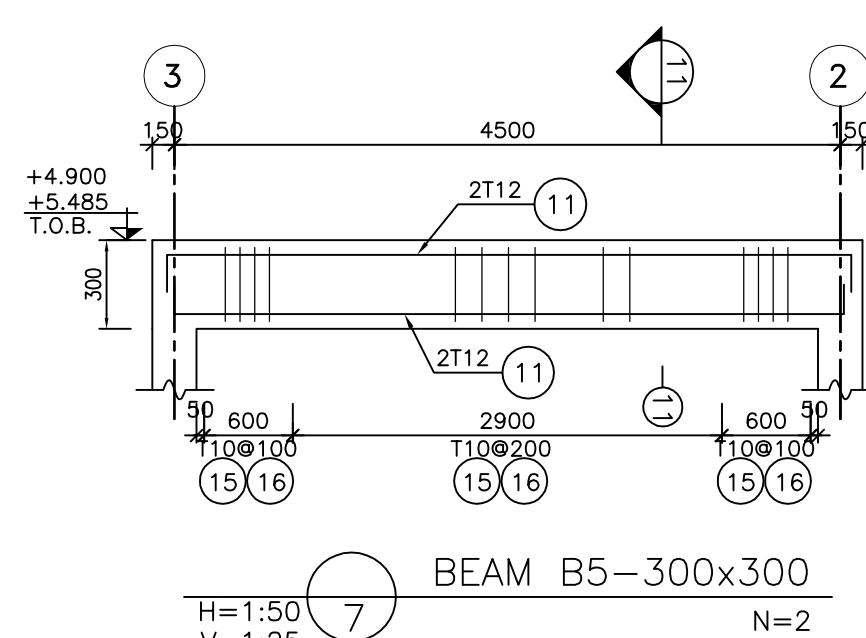
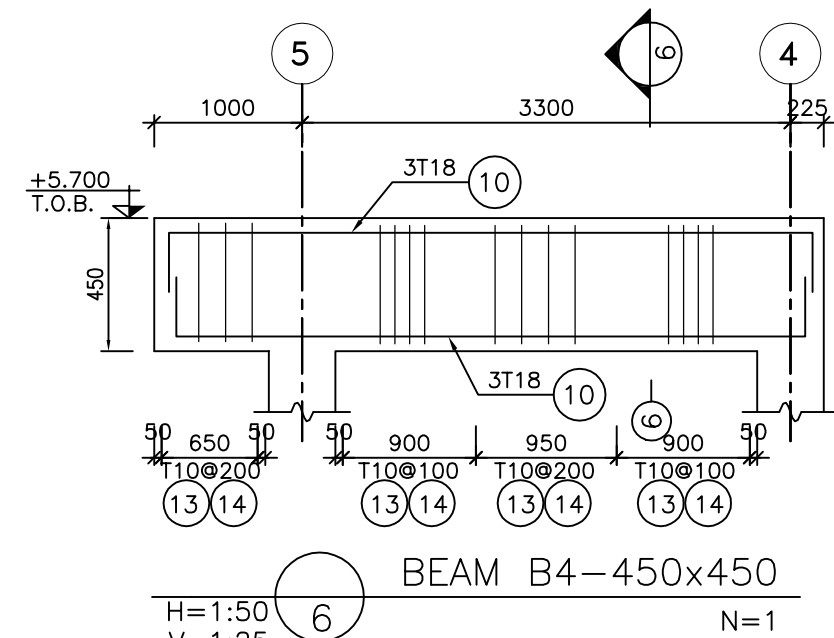
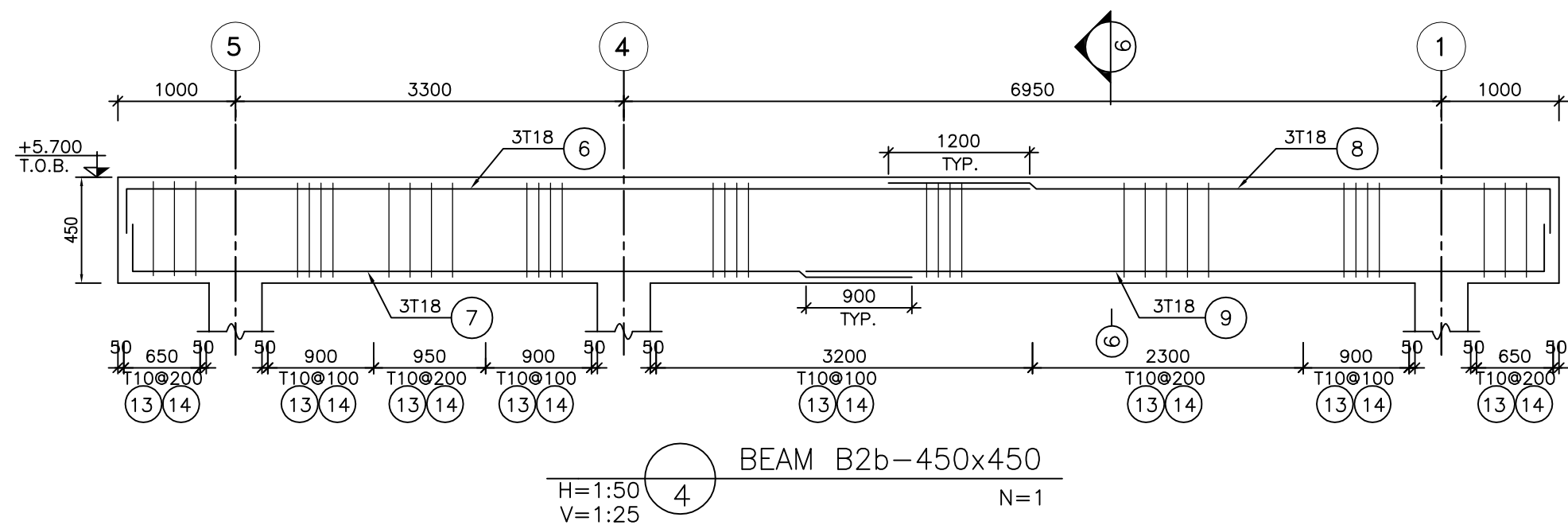
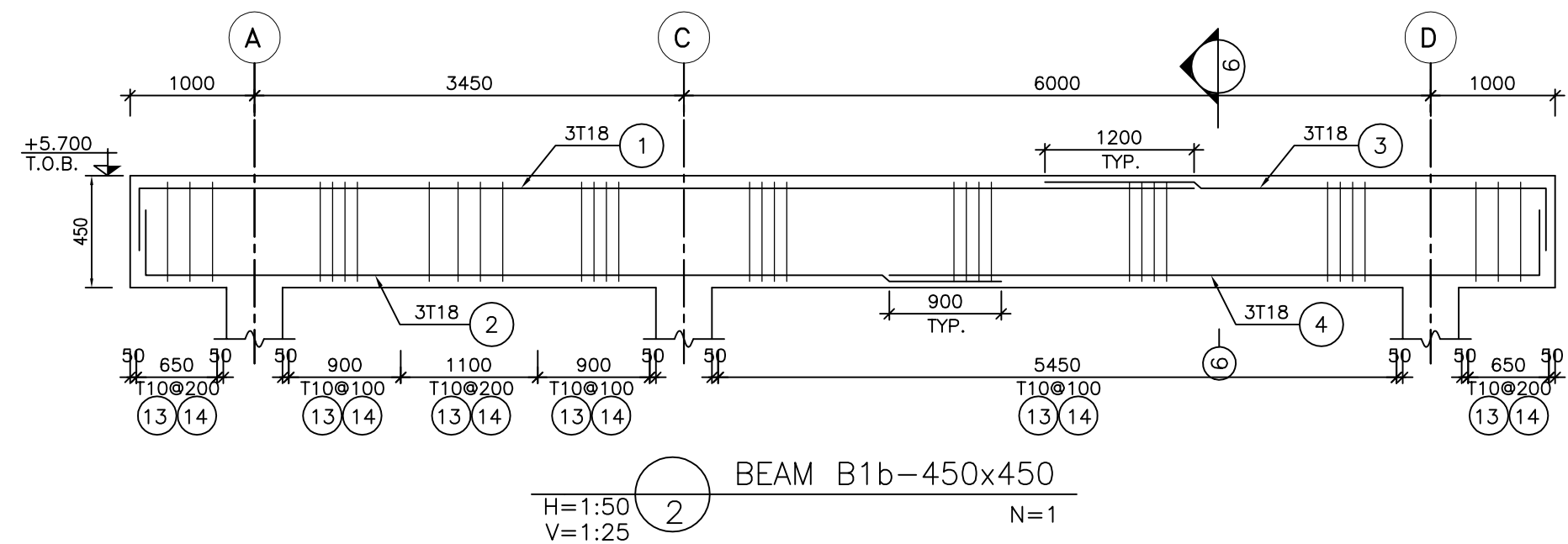
F.G.L.	: FINISH GROUND LEVEL
T.O.F.	: TOP OF FOUNDATION
B.O.B.	: BOTTOM OF BASEPLATE
T.O.B.	: TOP OF BEAM

 REINFORCED CONCRETE
 LEAN CONCRETE
 GROUND

REFERENCE DRAWING	DRG. No.
ARCHITECTURAL DRAWING FOR SWITCHGEAR BUILDING OF WELLPADS-BK-15	BK-BK15-PEDCO-110-AR-DW-0002
FOUNDATION DRAWING FOR SWITCHGEAR BUILDING FOR WELLPADS-BK-15	BK-BK15-PEDCO-110-ST-DW-0004
GENERAL NOTES-REINFORCED CONCRETE STRUCTURES	BK-BK15-PEDCO-000-ST-DW-0012
STANDARD DRAWING FOR INSERT PLATES IN CONCRETE	BK-BK15-PEDCO-000-ST-DW-0007
PLOT PLAN DRAWING - BK15	BK-BK15-PEDCO-110-PI-PY-0001
GENERAL CIVIL LAYOUT - BK15	BK-BK15-PEDCO-110-CV-PY-0001




KEY PLAN

[illegible]



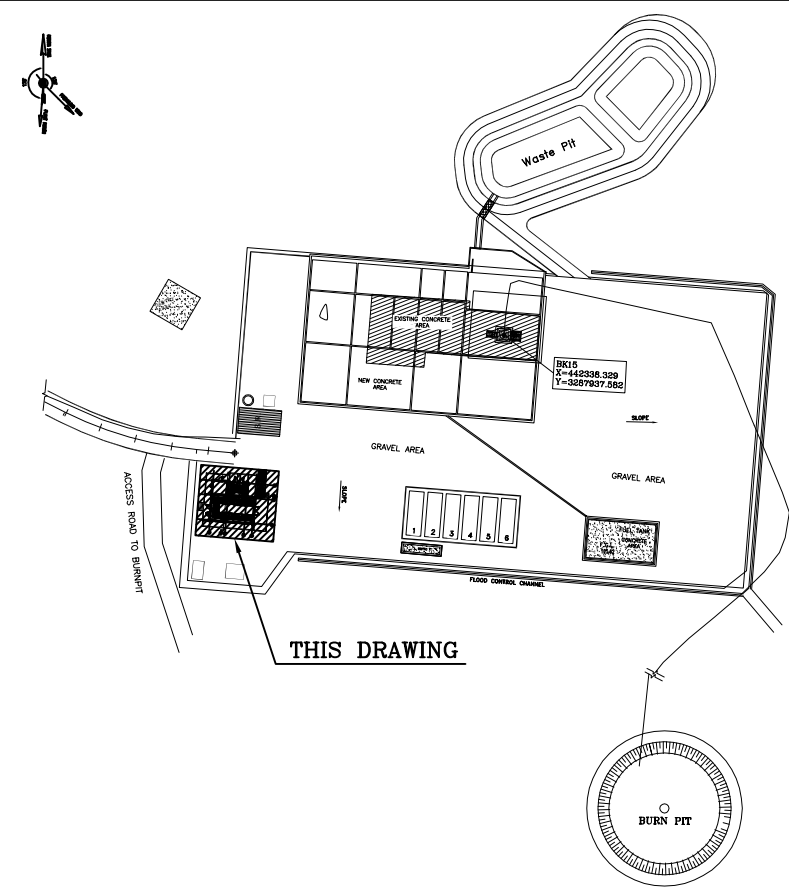
- $$\pm 0.00 = +125.62 \text{ MSL}$$

F.G.L. : FINISH GROUND LEVEL
T.O.F. : TOP OF FOUNDATION
B.O.B. : BOTTOM OF BASEPLATE
T.O.B. : TOP OF BEAM

 REINFORCED CONCRETE
 LEAN CONCRETE
 GROUND

REFERENCE DRAWING	DRG. No.
ARCHITECTURAL DRAWING FOR SWITCHGEAR BUILDING FOR WELLPADS-BK-15	BK-BK15-PEDCO-110-A-AR-DW-0002
FOUNDATION DRAWING FOR SWITCHGEAR BUILDING FOR WELLPADS-BK-15	BK-BK15-PEDCO-110-ST-DW-0004
GENERAL NOTES-REINFORCED CONCRETE STRUCTURES	BK-GNRL-PEDCO-000-ST-DW-0012
STANDARD DRAWING FOR INSERT PLATES IN CONCRETE	BK-GNRL-PEDCO-000-ST-DW-0007
PLOT PLAN DRAWING - BK15	BK-BK15-PEDCO-110-PI-PY-0001
GENERAL CIVIL LAYOUT - BK15	BK-BK15-PEDCO-110-CV-PY-0001

KEY PLAN

[illegible]