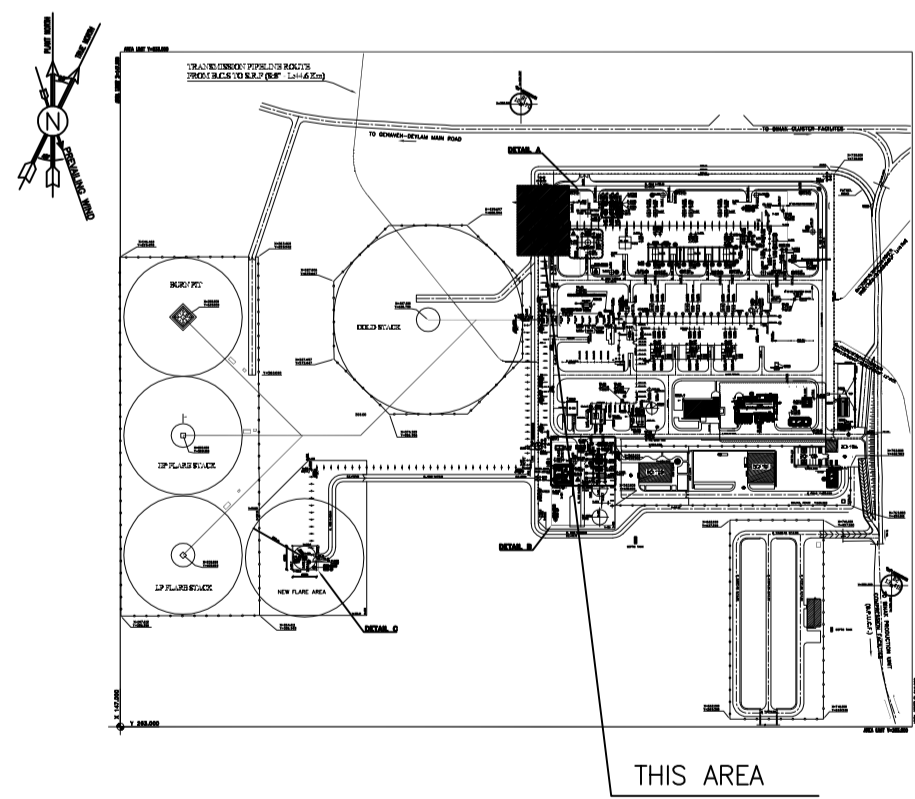


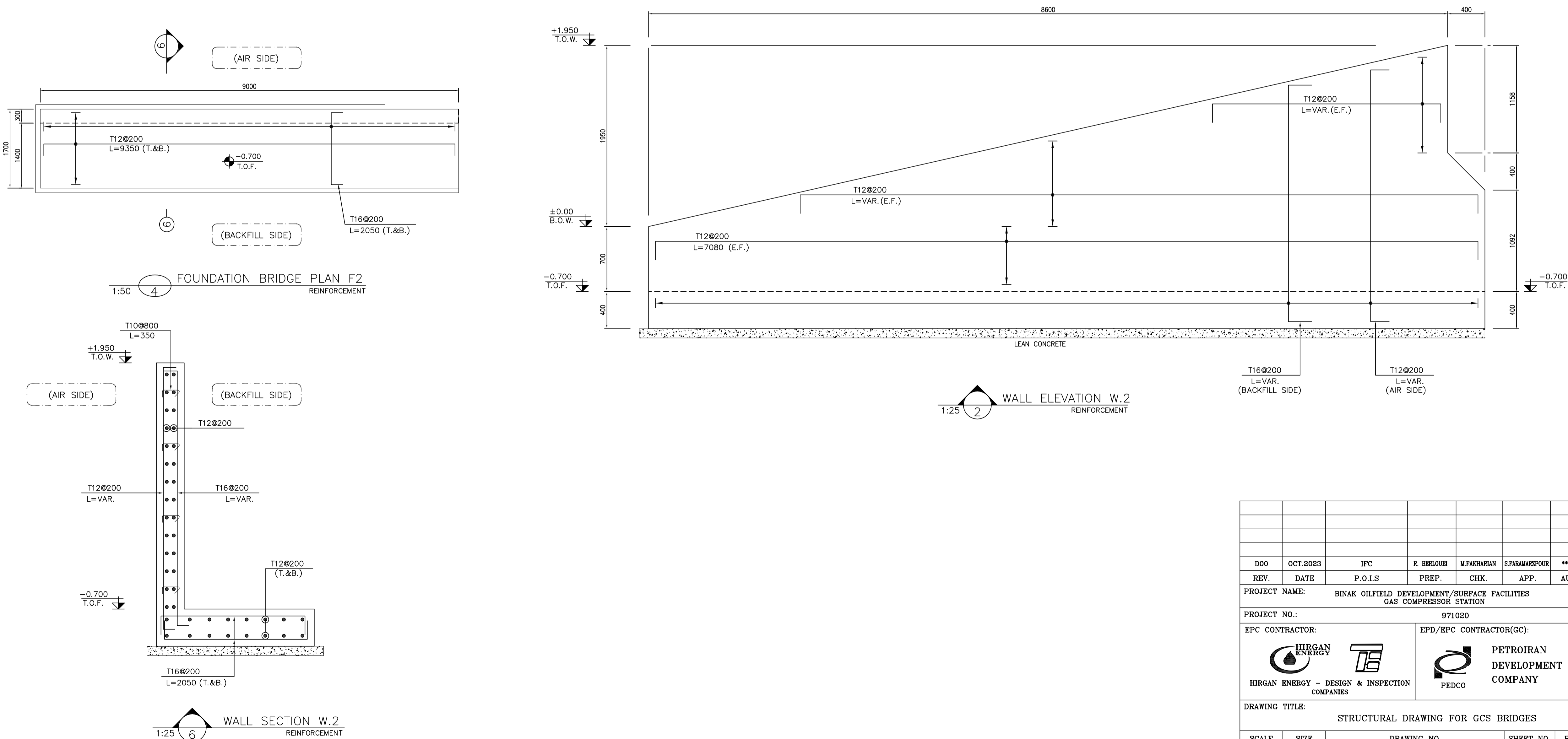


- $$\pm 0.00 = +11.20(\text{H.P.P.})$$

REFERENCE DRAWING	DRG. No.
GENERAL NOTES - REINFORCED CONCRETE STRUCTURES	BK-GNRL-PEDCO-000-ST-DW-0012
STANDARD DRAWING FOR ROADS	BK-GNRL-PEDCO-000-CV-DW-0003
STANDARD DETAILS OF MISCELLANEOUS ITEMS	BK-GNRL-PEDCO-000-CV-DW-0040
STANDARD DRAWING OF INSERT PLATES IN CONCRETE	BK-GNRL-PEDCO-000-ST-DW-0007

[illegible]





**NOTES**

- 1) ALL ELEVATIONS AND COORDINATES ARE IN "m" AND DIMENSIONS ARE IN "mm" UNLESS OTHERWISE NOTED.
- 2) ALL DIMENSIONS AND ELEVATIONS SHALL BE CHECKED BY THE CONTRACTOR PRIOR TO CONSTRUCTION.
- 3) ACCORDING TO THE SPECIFICATION OF CONCRETE WORKS:  
"bk-gnrl-pedco-000-st-sp-0001",28 DAYS CHARACTERISTIC COMPRESSIVE STRENGTH OF MAIN CONCRETE IS 30 MPa(ON CYLINDRICAL SPECIMEN)
- 4) ACCORDING TO THE SPECIFICATION OF CONCRETE WORKS:  
"bk-gnrl-pedco-000-st-sp-0001",28 DAYS CHARACTERISTIC COMPRESSIVE STRENGTH OF LEAN CONCRETE IS 15 MPa(ON CYLINDRICAL SPECIMEN)
- 5) CONCRETE COVER OVER BARS SHALL BE 75mm FOR FOUNDATION & 50mm FOR WALLS & PEDESTALS.
- 6) REINFORCING BARS SHALL BE S400 ACCORDING TO: ISIRI3132 AND INBC9 WITH MINIMUM TENSILE YIELD STRENGTH 400 N/mm<sup>2</sup>
- 7) REINFORCEMENT SHALL BE ADJUSTED LOGICALLY TO SUIT THE RECESS OF ANCHOR BOLTS, HOLES AND OTHER EMBEDDED MATERIALS.
- 8) UNDERGROUND CONCRETE SHALL BE PROTECTED AND COATED ACCORDING TO RELEVANT SPECIFICATION.
- 9) PORTLAND CEMENT TYPE 2 SHALL BE USED FOR CONCRETE AND LEAN CONCRETE.
- 10) FILL MATERIAL SHALL BE COMPACTED TO NOT LESS THAN 95% OF THE MAXIMUM DENSITY AS DETERMINED BY ASTM D-1557 (MODIFIED PROCTOR) METHOD.
- 11) H.P.P. AND H.P.P. ELEVATION =+100.00 LOCAL CORRESPOND TO +11.20 M.S.L.

±0.00 = +11.20(H.P.P.)

**LEGEND AND ABBREVIATION**

	REINFORCED CONCRETE
	LEAN CONCRETE
	GROUND

T.O.F. = TOP OF FOUNDATION  
T.O.C. = TOP OF CONCRETE  
T.O.S = TOP OF SLAB  
T.O.W. = TOP OF WALL  
T.O.R.O. = TOP OF ROAD  
H.P.P. = HIGH POINT PAVING

REFERENCE DRAWING	DRG. No.
GENERAL NOTES - REINFORCED CONCRETE STRUCTURES	BK-GNRL-PEDCO-000-ST-DW-0012
STANDARD DRAWING FOR ROADS	BK-GNRL-PEDCO-000-CV-DW-0003
STANDARD DETAILS OF MISCELLANEOUS ITEMS	BK-GNRL-PEDCO-000-CV-DW-0040
STANDARD DRAWING OF INSERT PLATES IN CONCRETE	BK-GNRL-PEDCO-000-ST-DW-0007

**KEY PLAN**

***	*****	**,**	***,****	**,**	***,****
REV.	DESCRIPTION	BY	DATE	BY	DATE
		CHECKED		REV. APPR.	

اصل و کليه نسخ اين نقشه و حق اقتباس متعلق به شرکت ملی مناطق نفت خيز جنوب ميباشد.

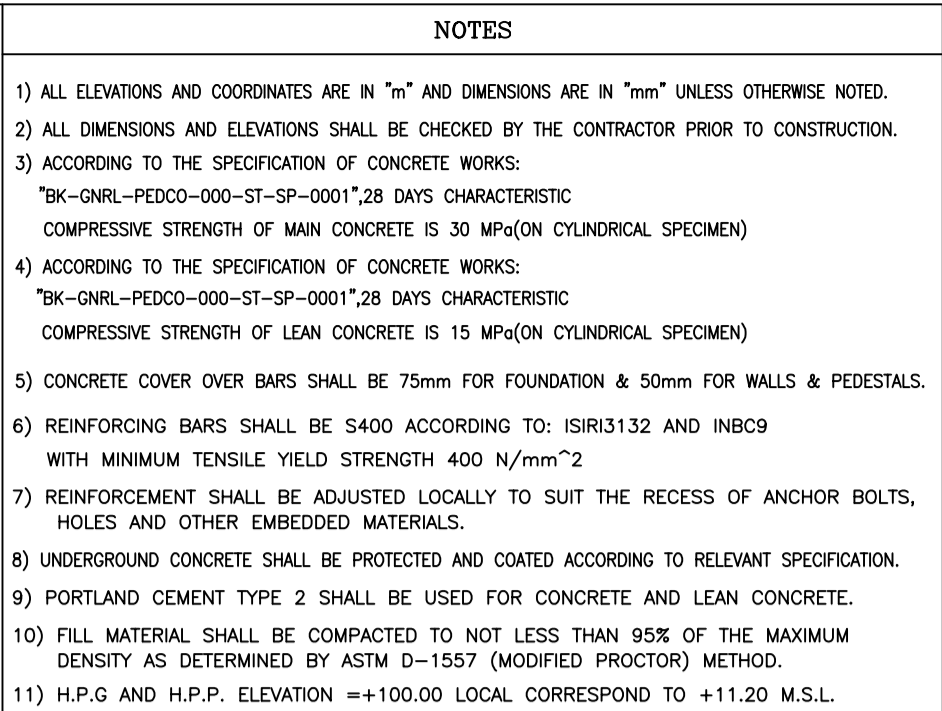
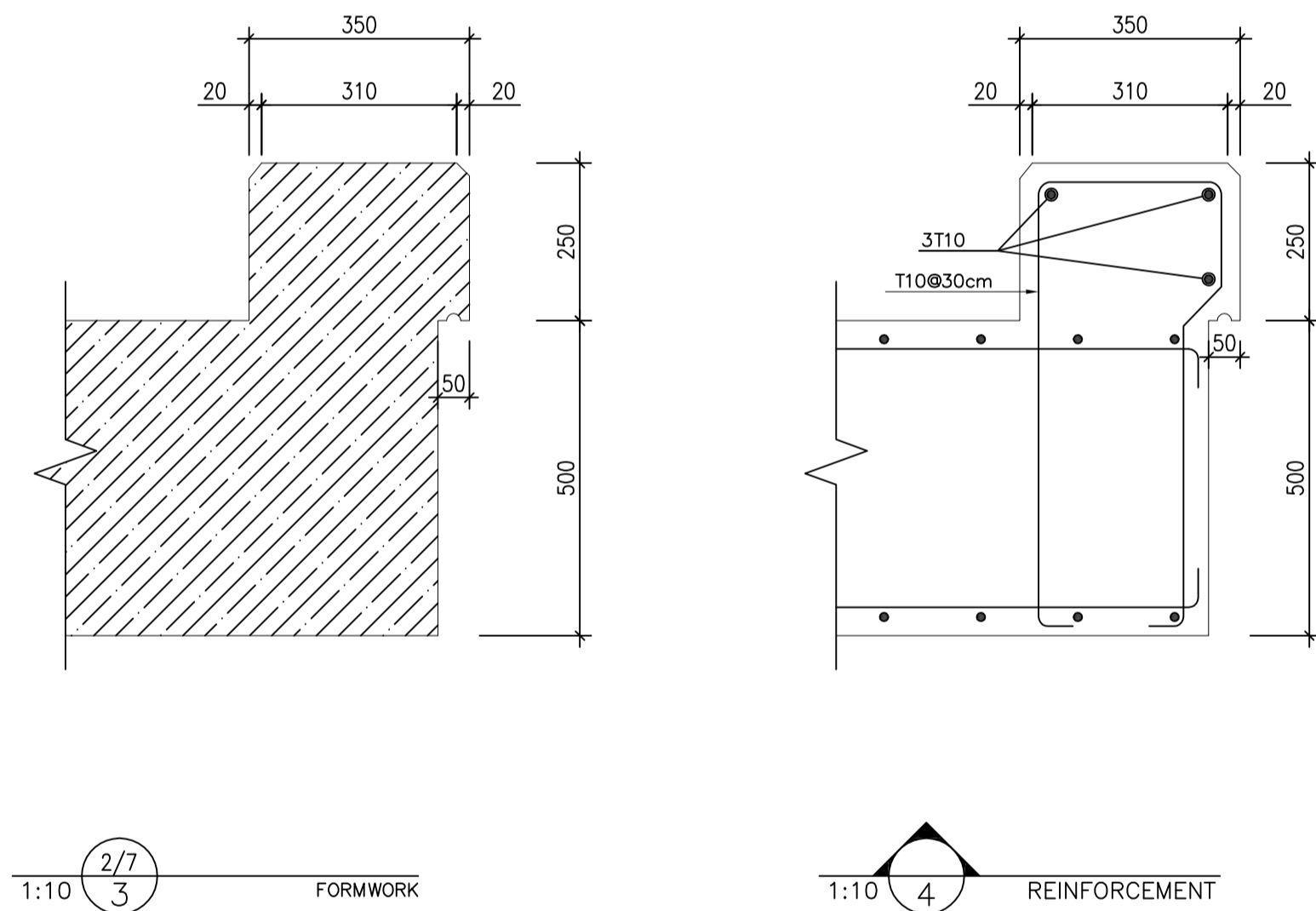
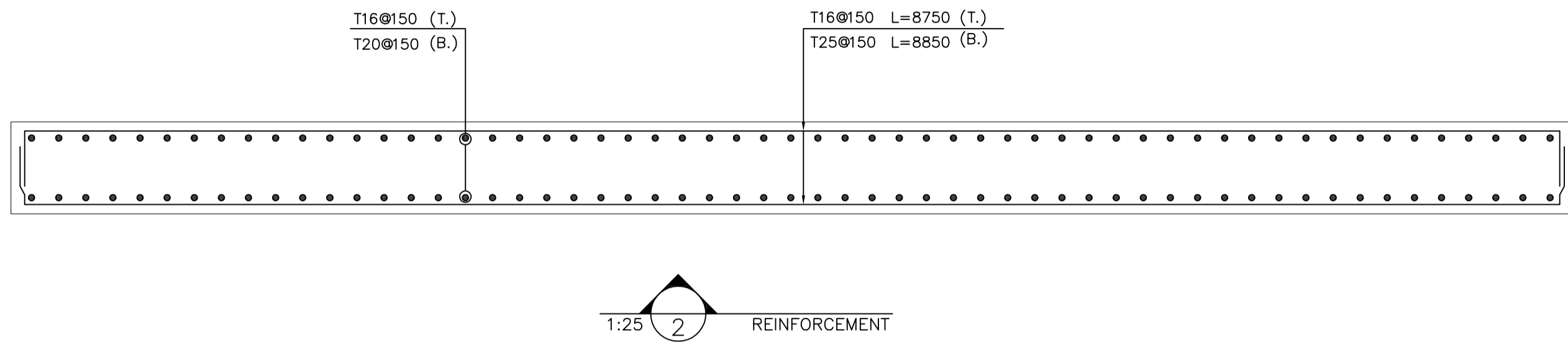
THE ORIGINAL AND ALL COPIES OF THIS DRAWING TOGETHER WITH THE COPYRIGHT THEREIN ARE THE SOLE PROPERTY OF  
**N.I.S.O.C. / FIELDS**


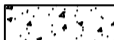

**BINAK OILFIELD DEVELOPMENT  
SURFACE FACILITIES  
GAS COMPRESSOR STATION**

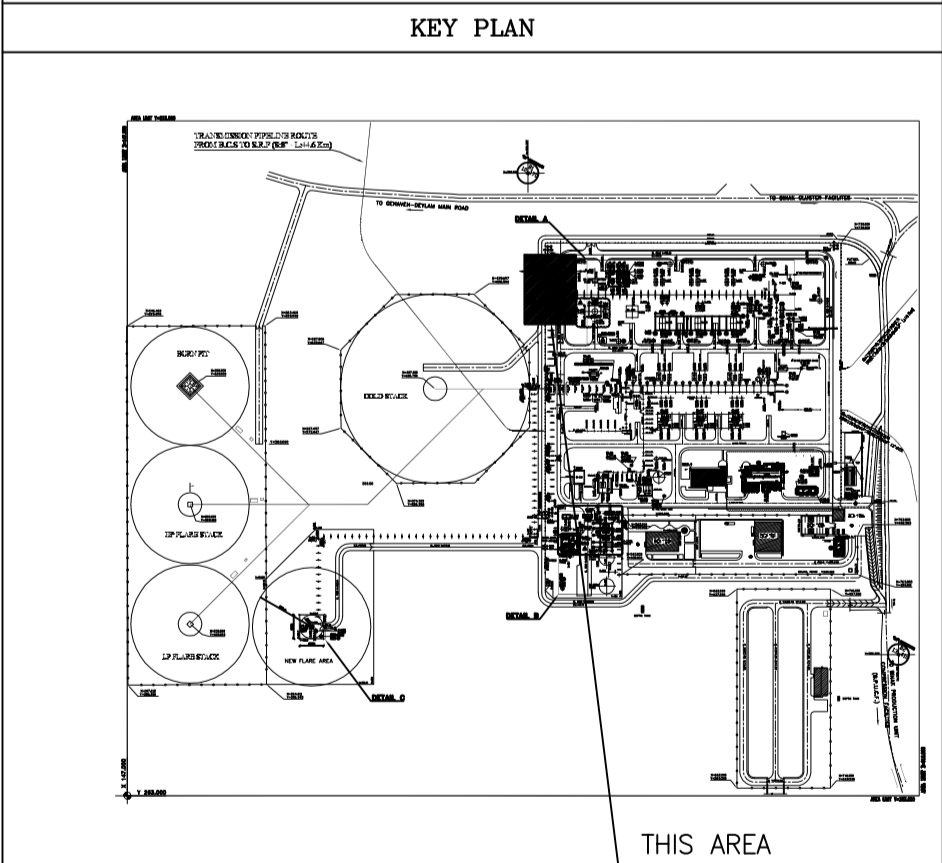
DATE	SCALE	DRAWING BY	CHECKED BY	PROJECT ENG.

NO CONSTRUCTION PERMITTED UNLESS DRAWING APPROVED

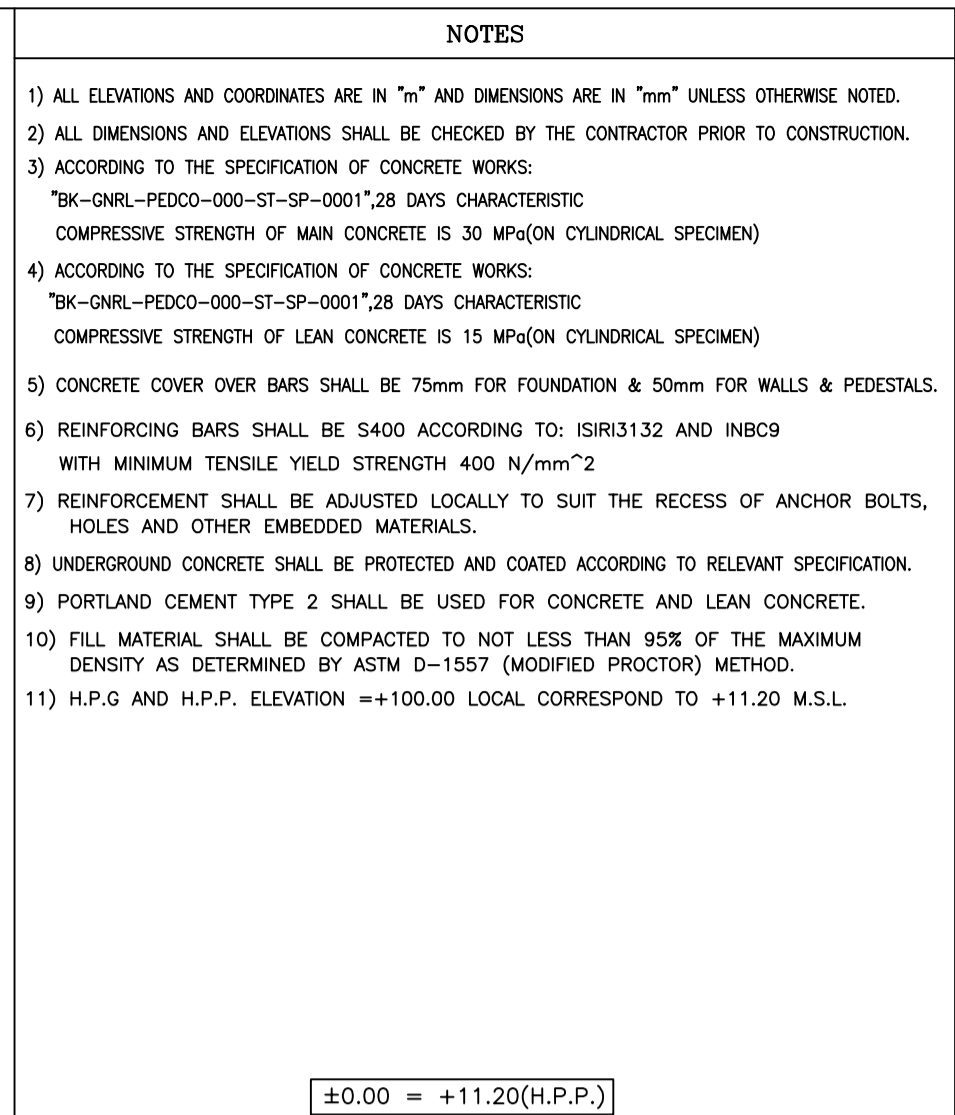
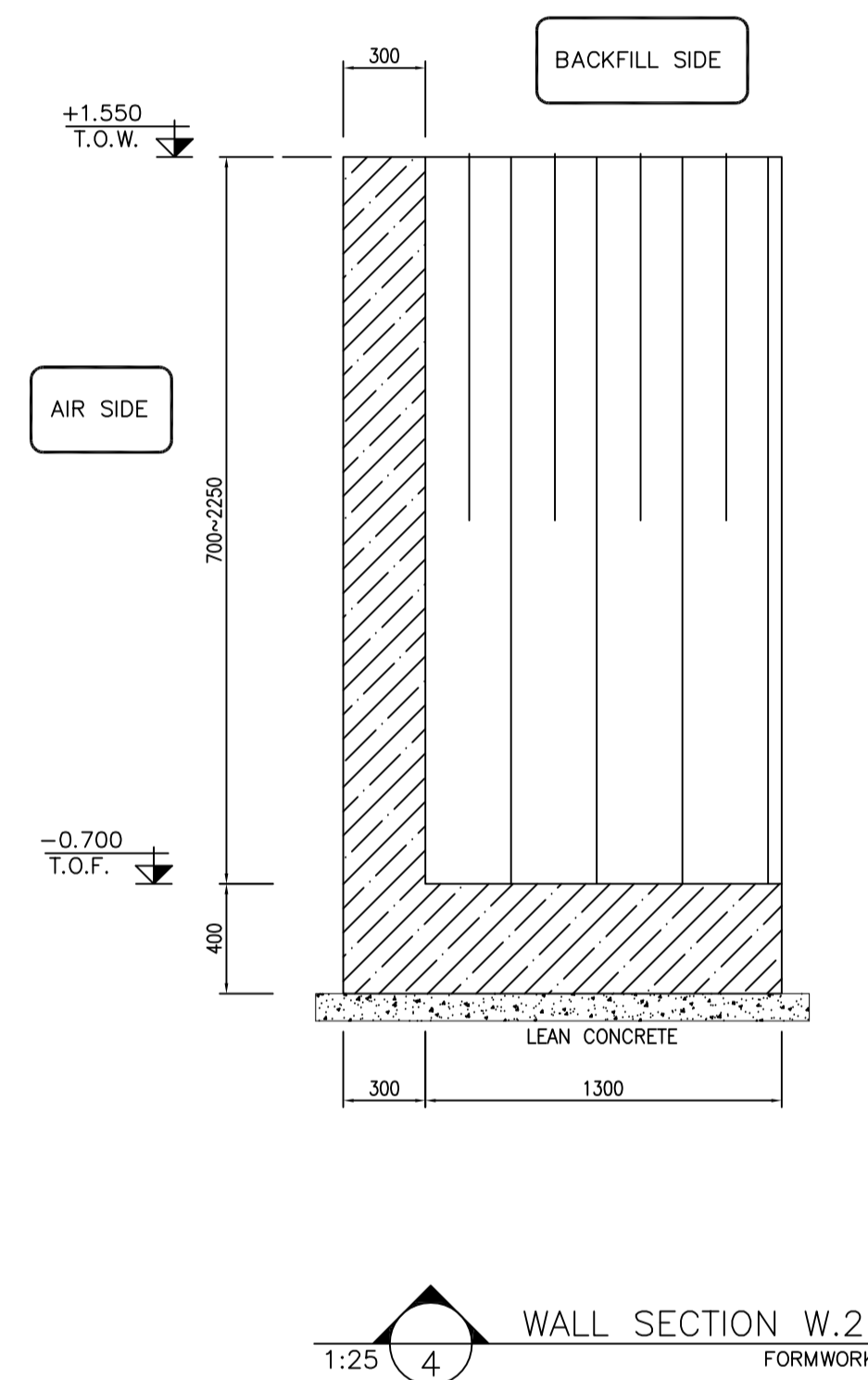
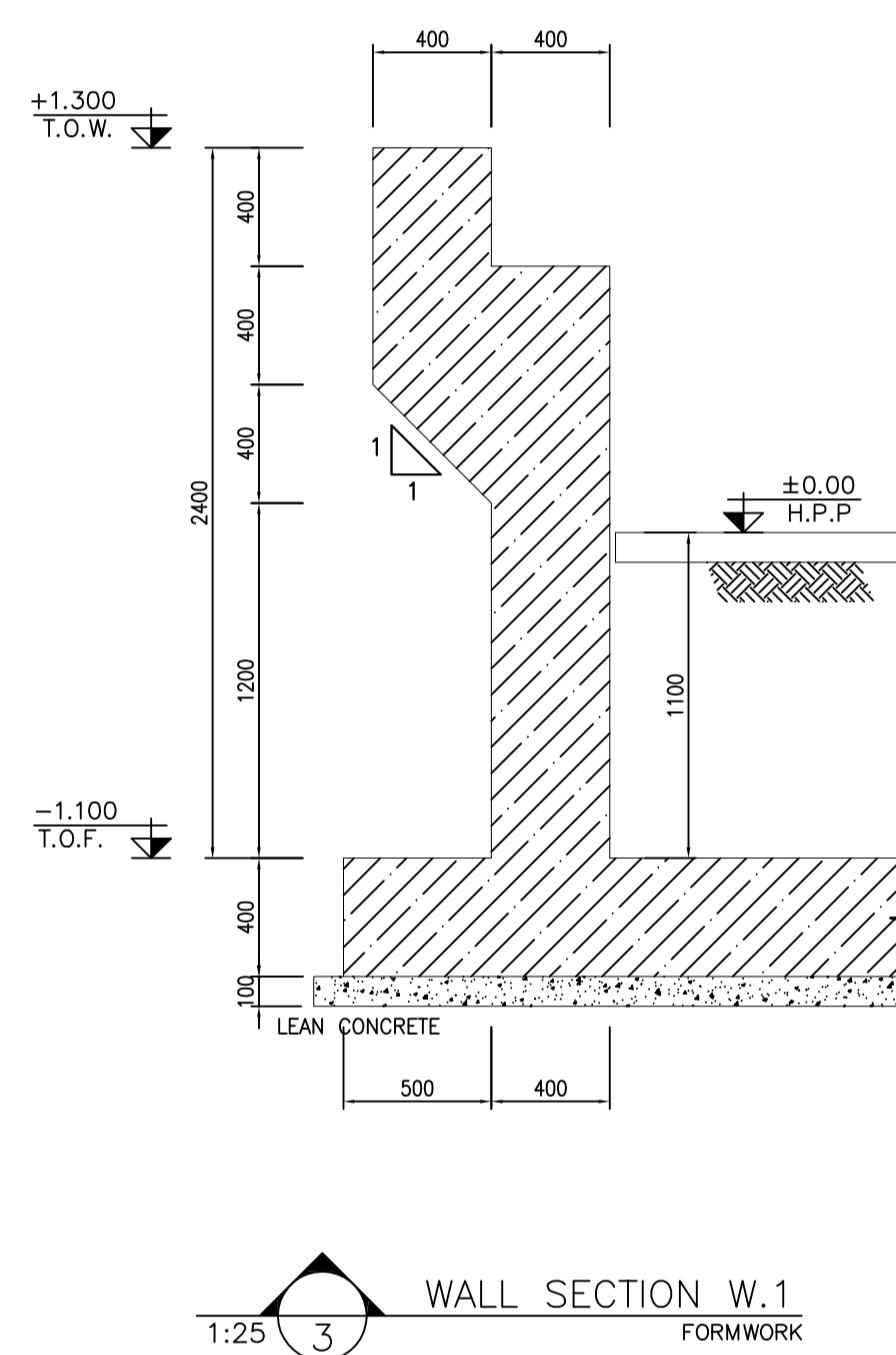
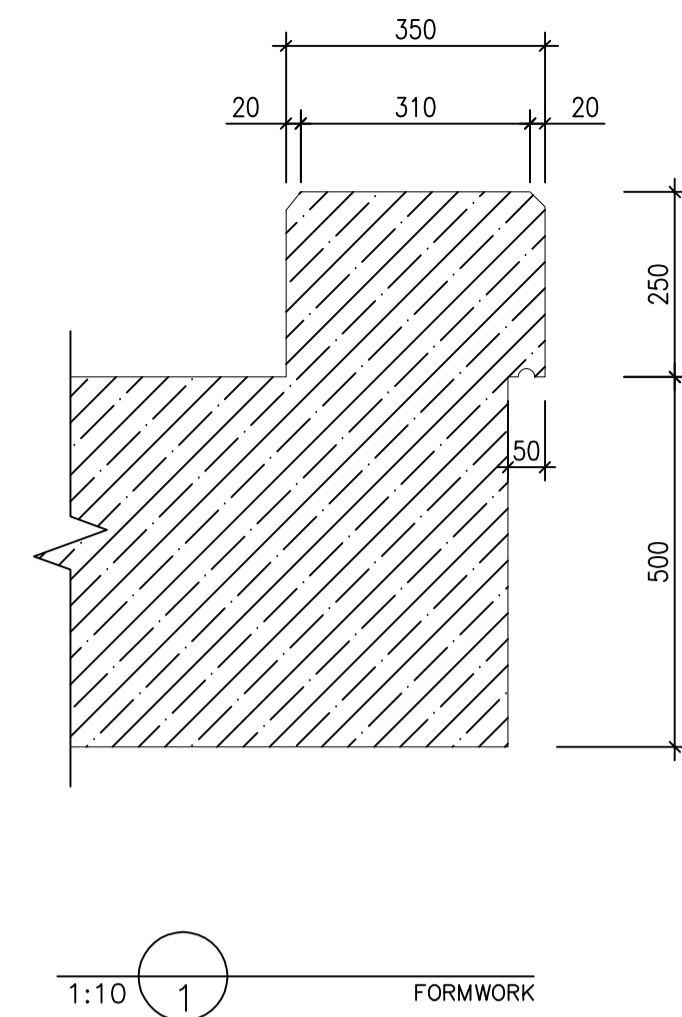
APPROVED FOR CONSTRUCTION				BY:	DATE:
BUDGET REF.	LOCATION	SIZE	CLASS	SERIAL NO.	SHEET
053-073-9184	F	4	M	709411	3
					D00


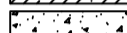


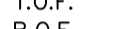
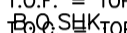
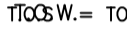
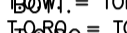
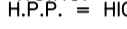




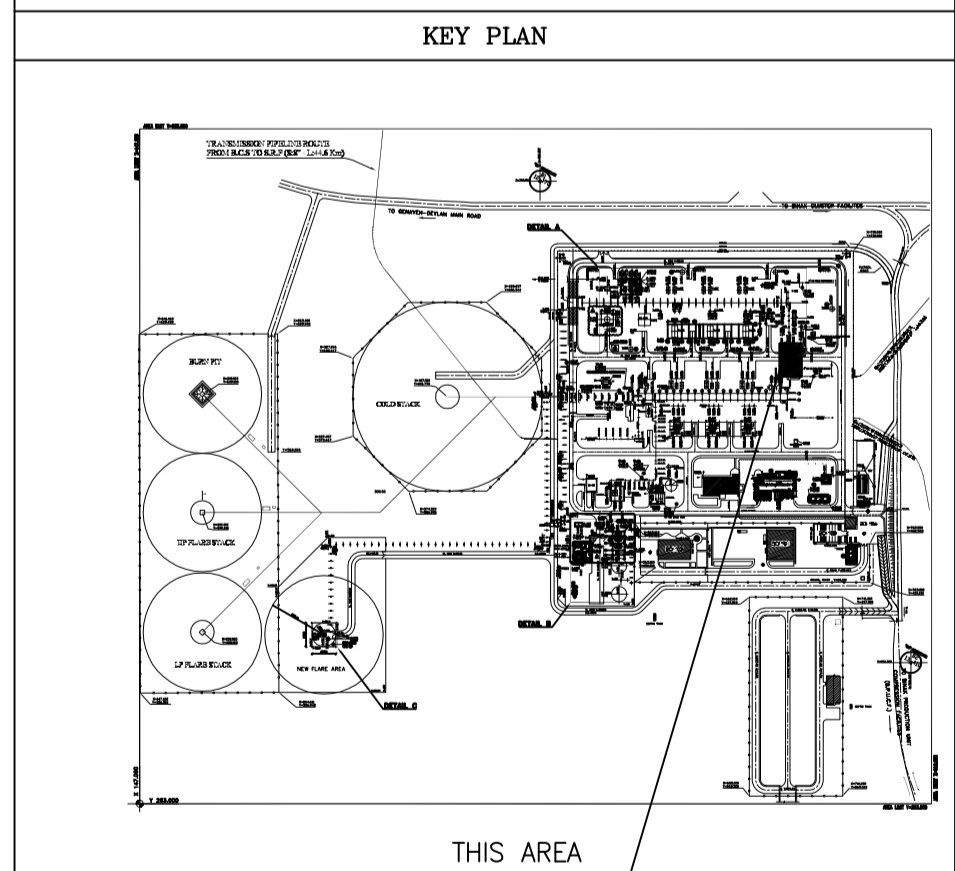
LEGEND AND ABBREVIATION	
	REINFORCED CONCRETE
	LEAN CONCRETE
	GROUND
<p>T.O.F. = TOP OF FOUNDATION  T.O.C. = TOP OF CONCRETE  T.O.S. = TOP OF SLAB  T.O.W. = TOP OF WALL  T.O.R.O. = TOP OF ROAD  H.P.P. = HIGH POINT PAVING</p>	
REFERENCE DRAWING	DRG. No.
GENERAL NOTES - REINFORCED CONCRETE STRUCTURES	BK-GNRL-PEDCO-000-ST-DW-0012
STANDARD DRAWING FOR ROADS	BK-GNRL-PEDCO-000-CV-DW-0003
STANDARD DETAILS OF MISCELLANEOUS ITEMS	BK-GNRL-PEDCO-000-CV-DW-0040
STANDARD DRAWING OF INSERT PLATES IN CONCRETE	BK-GNRL-PEDCO-000-ST-DW-0007

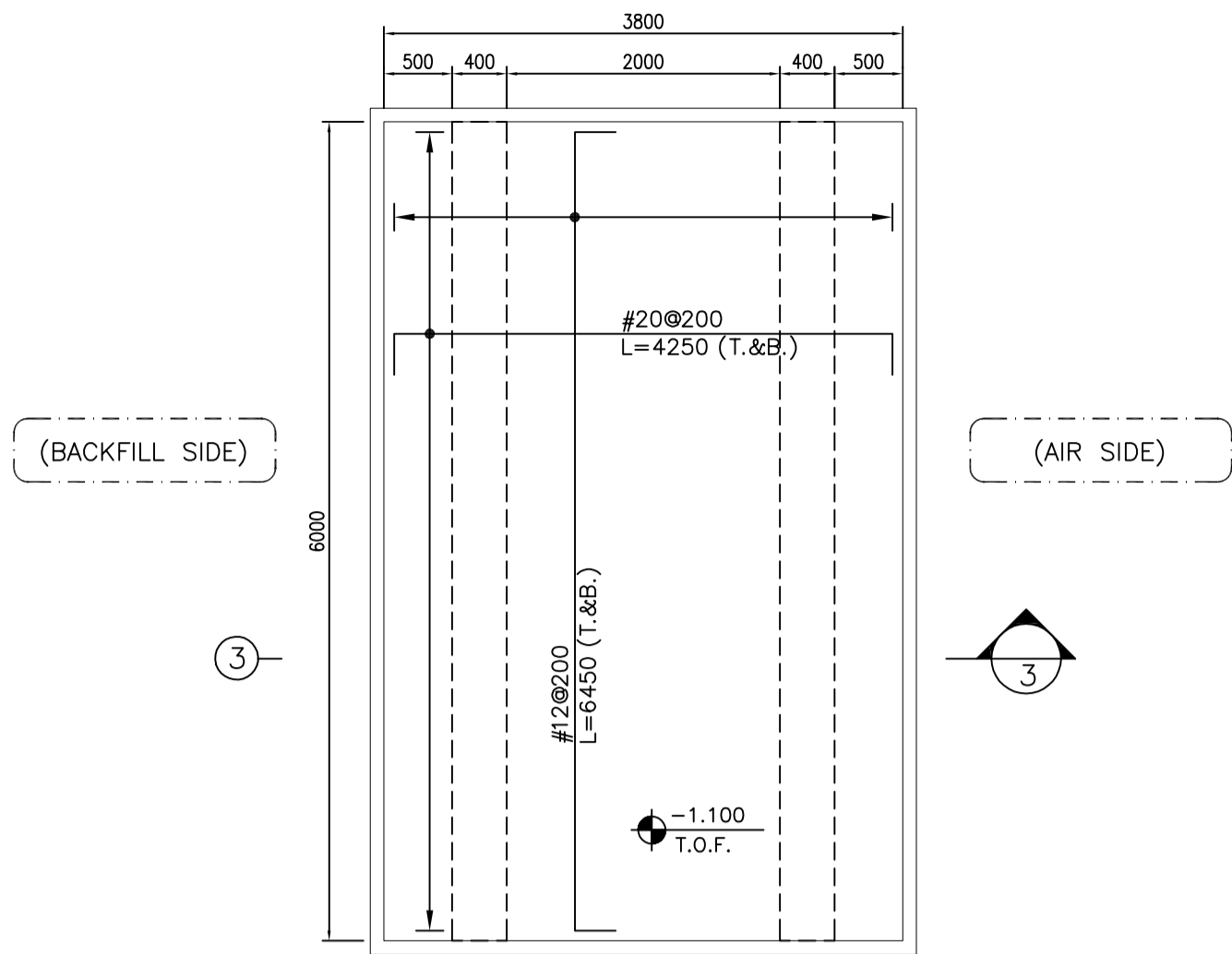
[illegible]

[illegible]

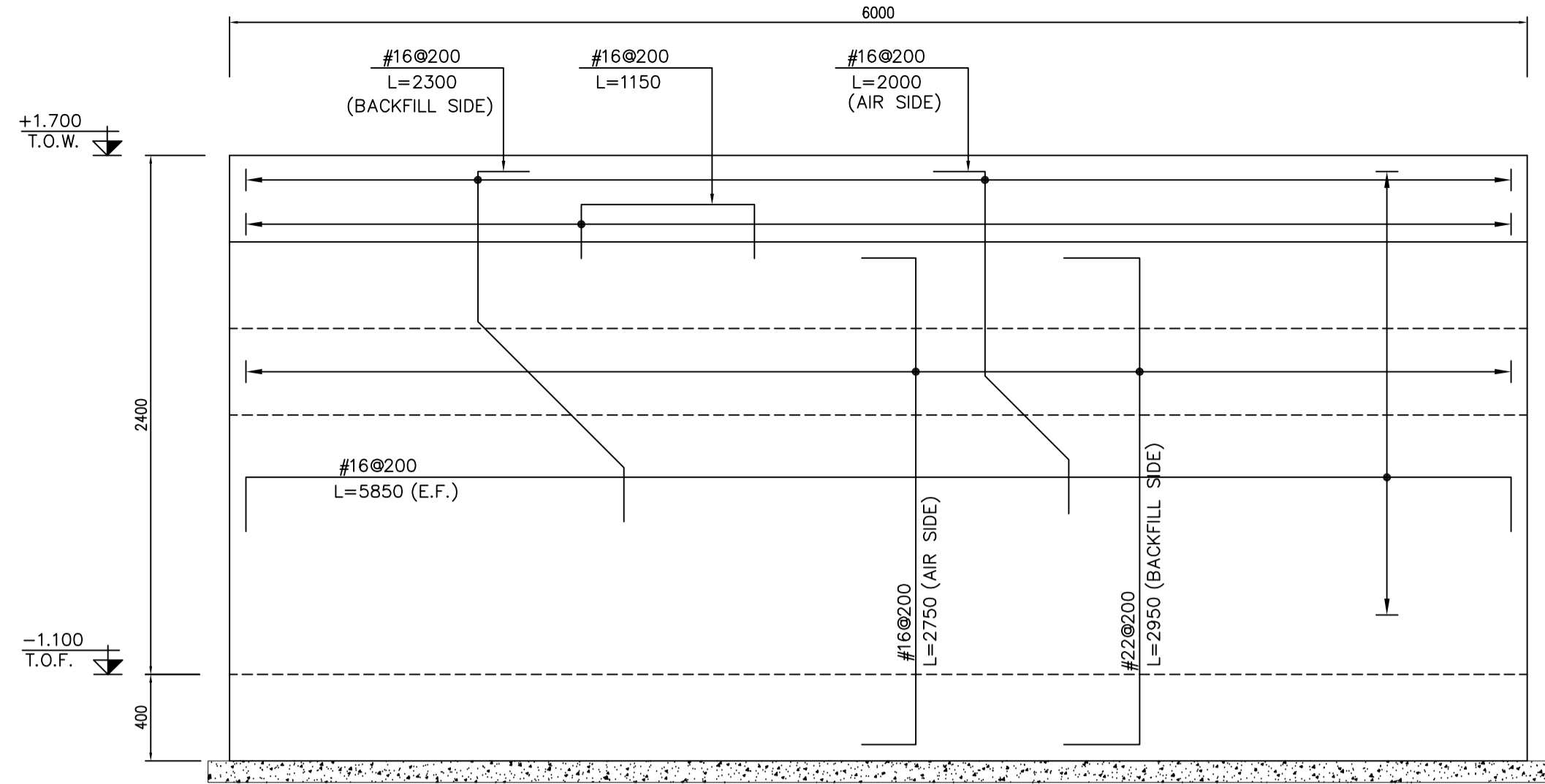


LEGEND AND ABBREVIATION	
	REINFORCED CONCRETE
	LEAN CONCRETE
	GROUND
	TOP OF ROAD PAVING
	T.O.F. = TOP OF FOUNDATION
	T.O.B.F. = TOP OF BOUNDARY OF FOUNDATION
	R.O.S.K. = TOP OF CONCRETE OF SHEAR KEY
	T.O.R.C.W. = TOP OF ROAD CUT WALL
	T.O.P. = TOP OF PAVEMENT
	T.O.R. = TOP OF ROAD
	H.P.P. = HIGH POINT PAVING
REFERENCE DRAWING	DRG. No.
GENERAL NOTES - REINFORCED CONCRETE STRUCTURES	BK-GNRL-PEDCO-000-ST-DW-0012
STANDARD DRAWING FOR ROADS	BK-GNRL-PEDCO-000-CV-DW-0003
STANDARD DETAILS OF MISCELLANEOUS ITEMS	BK-GNRL-PEDCO-000-CV-DW-0040
STANDARD DRAWING OF INSERT PLATES IN CONCRETE	BK-GNRL-PEDCO-000-ST-DW-0007

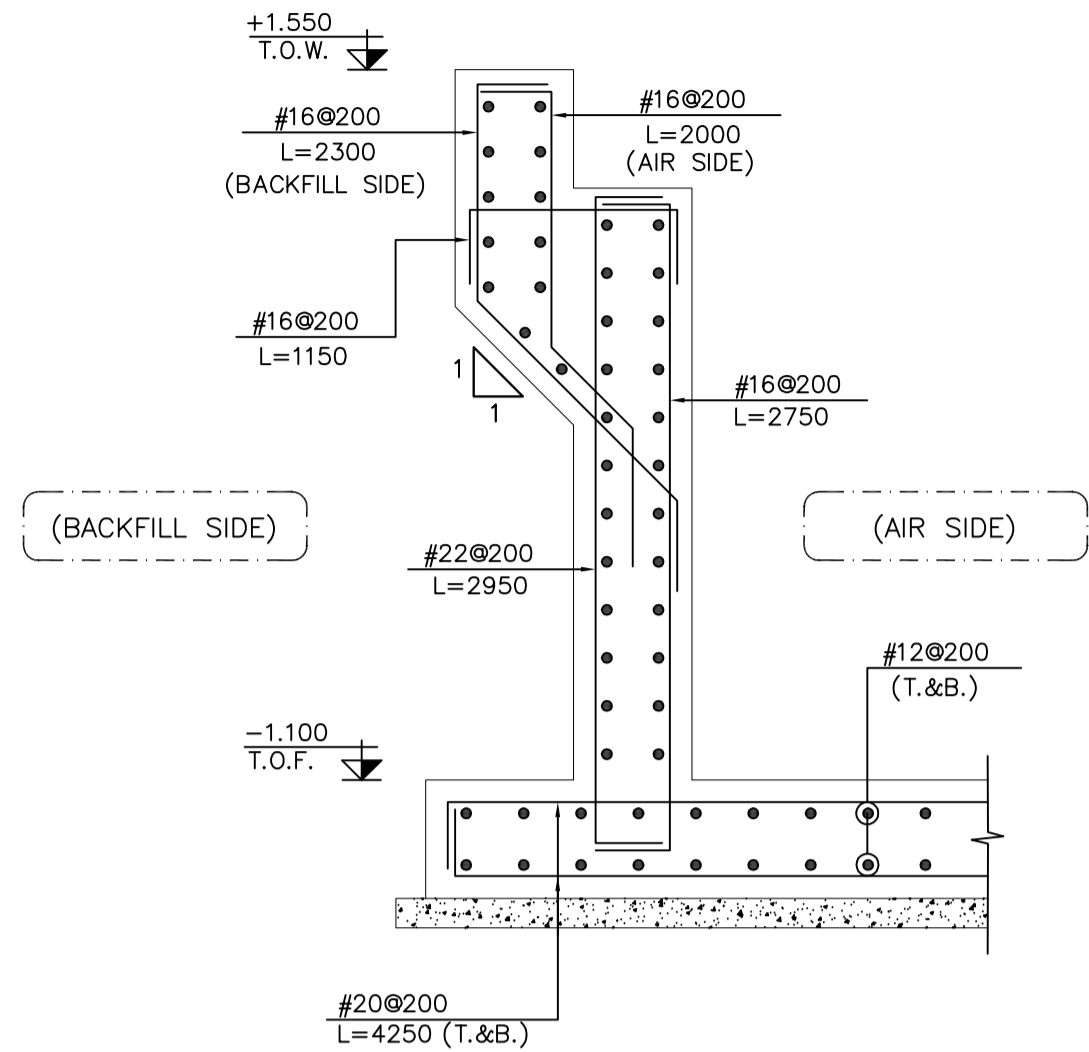
[illegible]



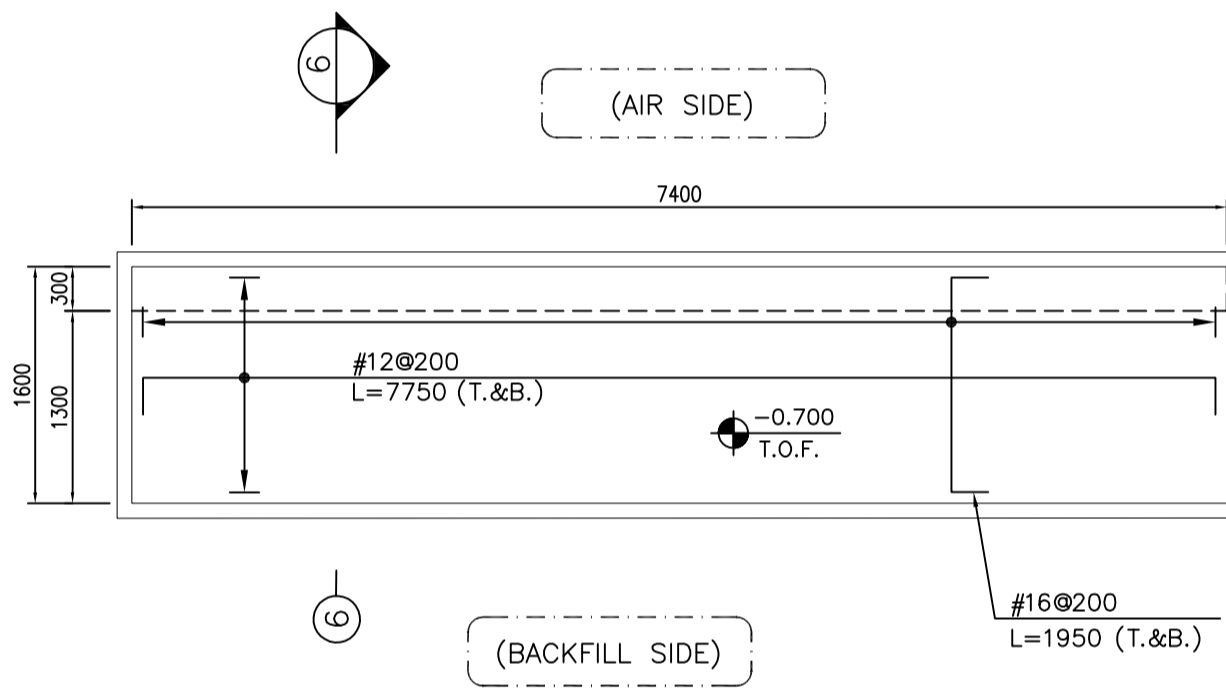
1:50 1 FOUNDATION BRIDGE PLAN F1 REINFORCEMENT



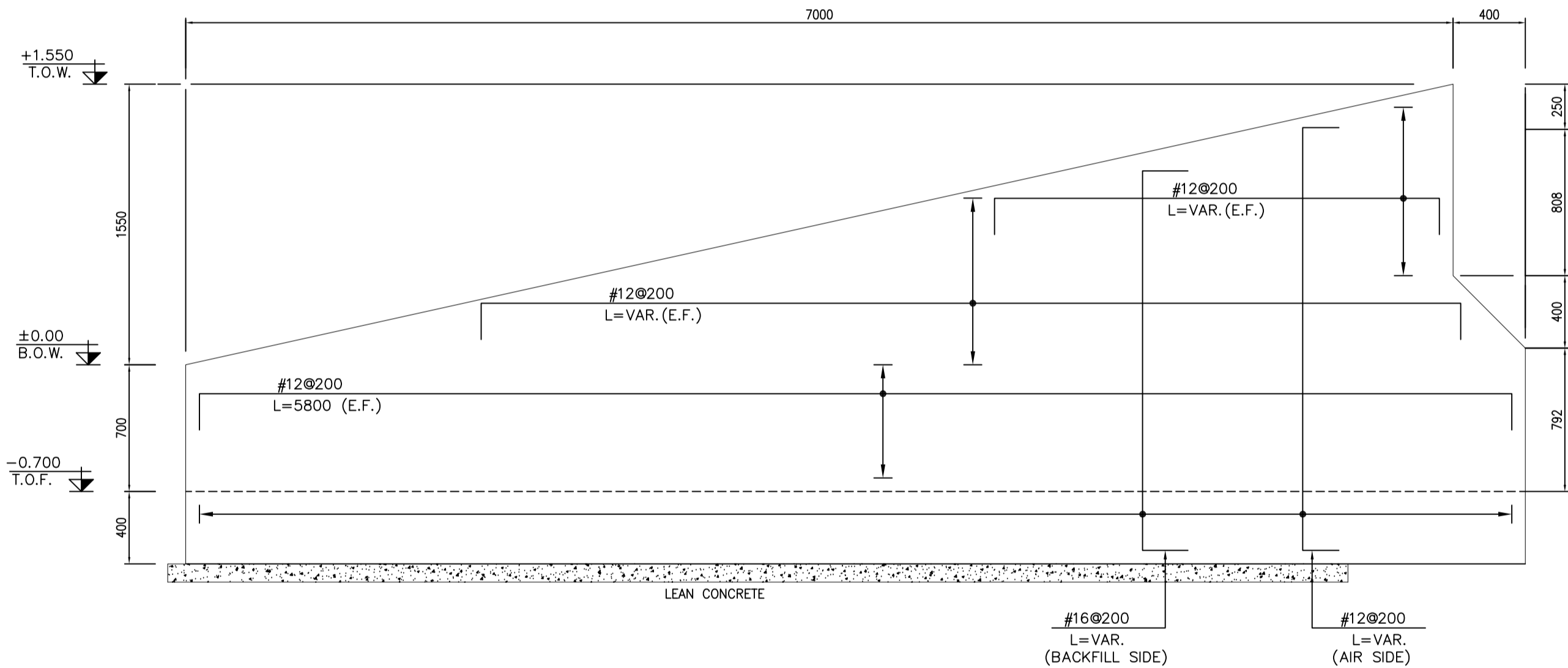
1:25 2 WALL ELEVATION W.1 REINFORCEMENT



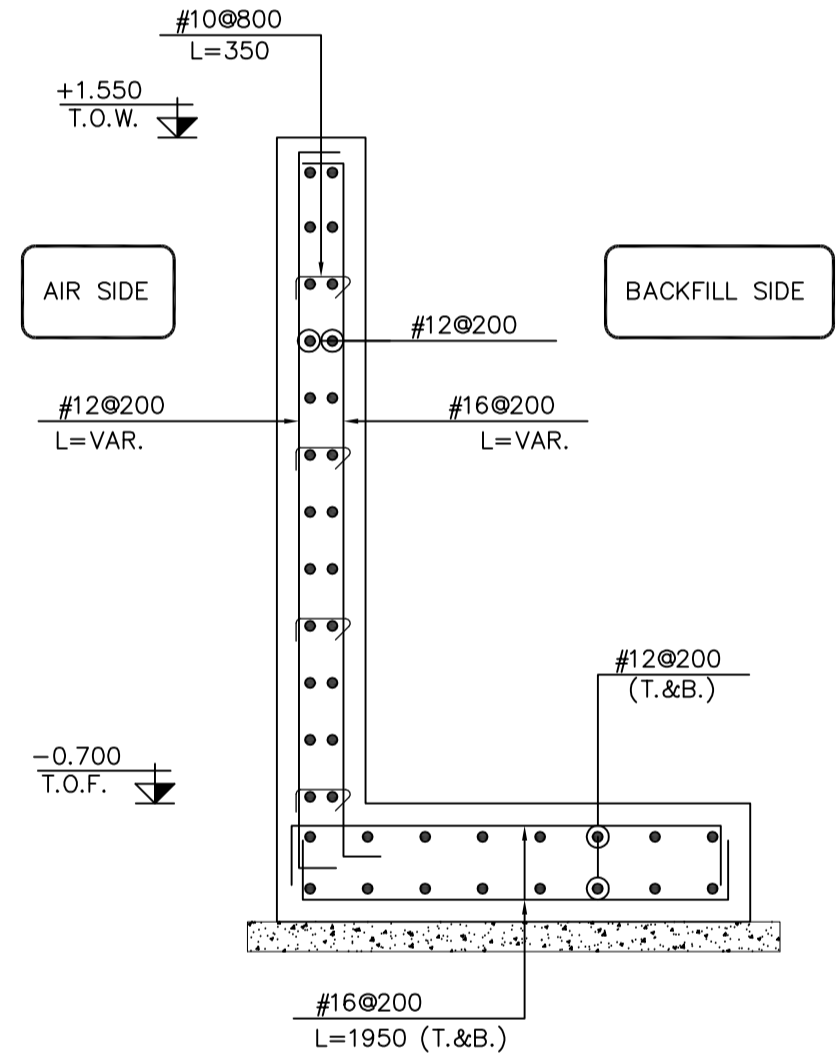
1:25 3 WALL SECTION W.1 REINFORCEMENT



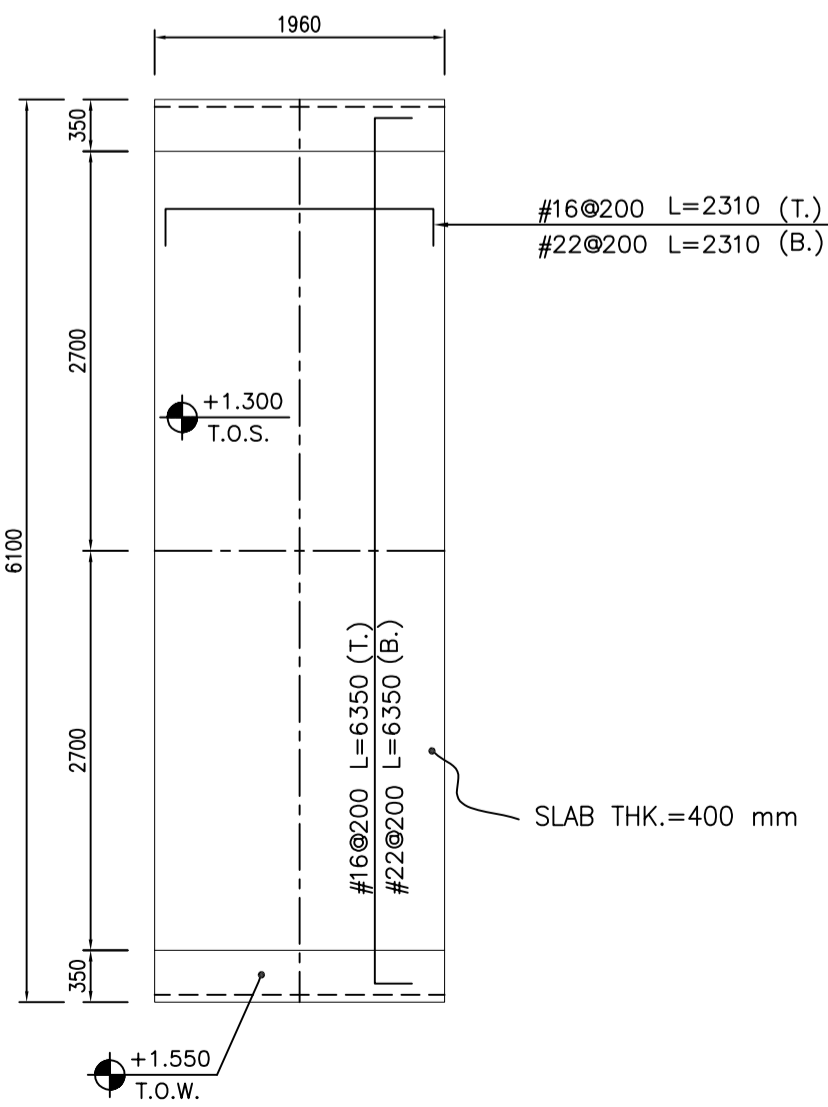
1:50 4 FOUNDATION BRIDGE PLAN F2 REINFORCEMENT



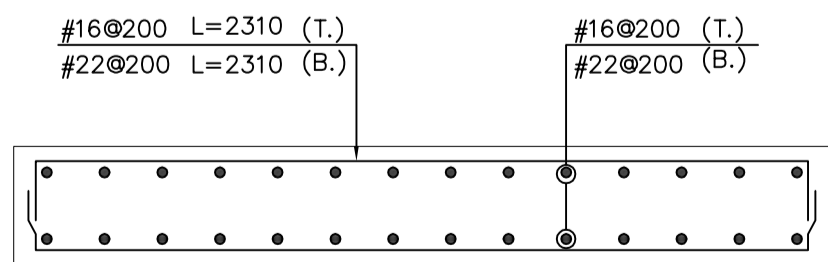
1:25 1/3 5 WALL ELEVATION W.2 REINFORCEMENT



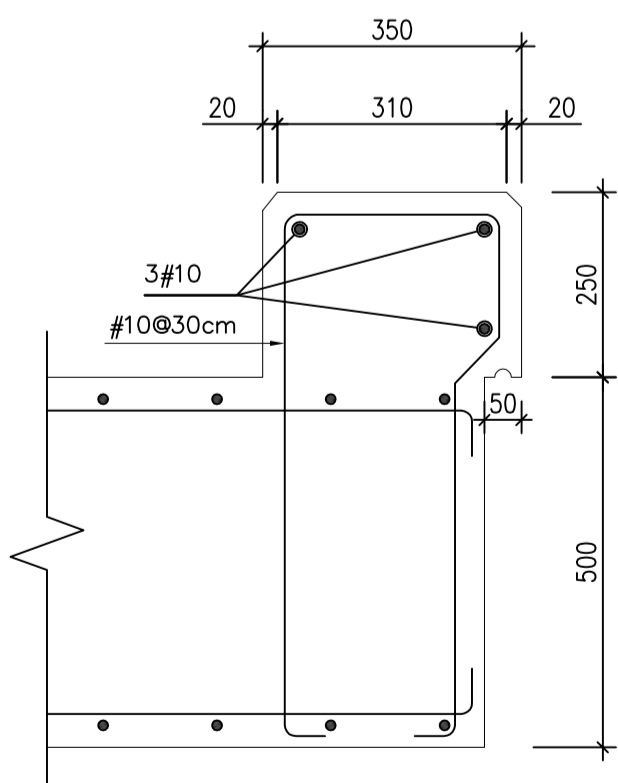
1:25 4 WALL SECTION W.2 REINFORCEMENT



1:50 7 WALL & SLAB PLAN REINFORCEMENT



1:25 8 REINFORCEMENT



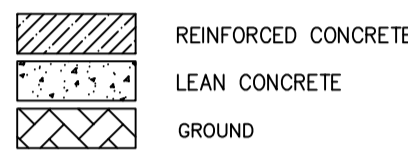
1:10 9 REINFORCEMENT

#### NOTES

- 1) ALL ELEVATIONS AND COORDINATES ARE IN "m" AND DIMENSIONS ARE IN "mm" UNLESS OTHERWISE NOTED.
- 2) ALL DIMENSIONS AND ELEVATIONS SHALL BE CHECKED BY THE CONTRACTOR PRIOR TO CONSTRUCTION.
- 3) ACCORDING TO THE SPECIFICATION OF CONCRETE WORKS:  
"BK-GNRL-PEDCO-000-ST-SP-0001", 28 DAYS CHARACTERISTIC COMPRESSIVE STRENGTH OF MAIN CONCRETE IS 30 MPa (ON CYLINDRICAL SPECIMEN)
- 4) ACCORDING TO THE SPECIFICATION OF CONCRETE WORKS:  
"BK-GNRL-PEDCO-000-ST-SP-0001", 28 DAYS CHARACTERISTIC COMPRESSIVE STRENGTH OF LEAN CONCRETE IS 15 MPa (ON CYLINDRICAL SPECIMEN)
- 5) CONCRETE COVER OVER BARS SHALL BE 50mm FOR FOUNDATION & 50mm FOR WALLS & PEDESTALS.
- 6) REINFORCING BARS SHALL BE S400 ACCORDING TO: ISIRI 3132 AND INBC9 WITH MINIMUM TENSILE YIELD STRENGTH 400 N/mm<sup>2</sup>
- 7) REINFORCEMENT SHALL BE ADJUSTED LOCALLY TO SUIT THE RECESS OF ANCHOR BOLTS, HOLES AND OTHER EMBEDDED MATERIALS.
- 8) UNDERGROUND CONCRETE SHALL BE PROTECTED AND COATED ACCORDING TO RELEVANT SPECIFICATION.
- 9) PORTLAND CEMENT TYPE 2 SHALL BE USED FOR CONCRETE AND LEAN CONCRETE.
- 10) FILL MATERIAL SHALL BE COMPACTED TO NOT LESS THAN 95% OF THE MAXIMUM DENSITY AS DETERMINED BY ASTM D-1557 (MODIFIED PROCTOR) METHOD.
- 11) H.P.P.G AND H.P.P. ELEVATION =+100.00 LOCAL CORRESPOND TO +11.20 M.S.L.

±0.00 = +11.20(H.P.P.)

#### LEGEND AND ABBREVIATION

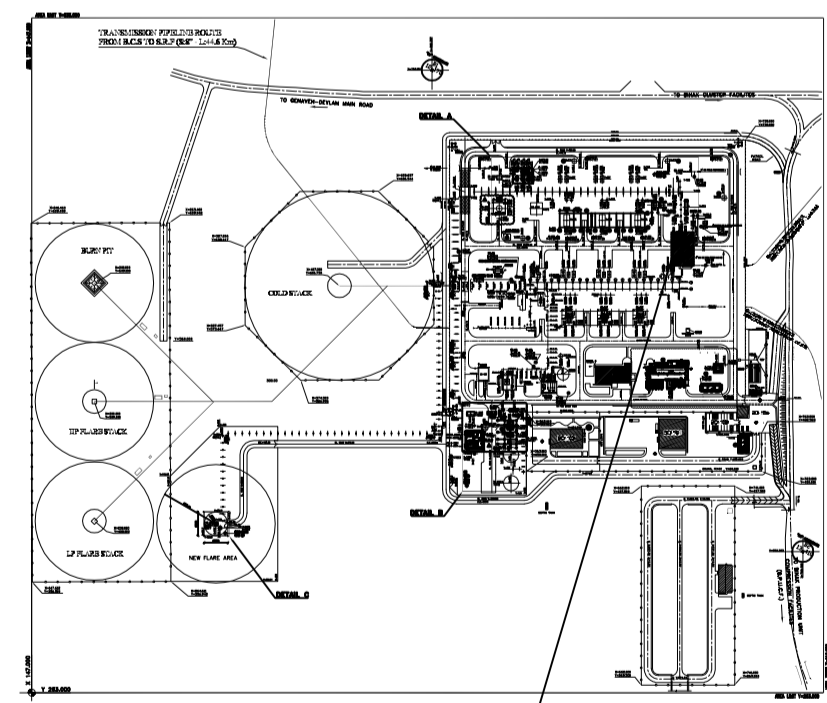



T.O.F. = TOP OF FOUNDATION  
T.O.C. = TOP OF CONCRETE  
T.O.S. = TOP OF SLAB  
T.O.W. = TOP OF WALL  
T.O.RO. = TOP OF ROAD  
H.P.P. = HIGH POINT PAVING

#### REFERENCE DRAWING

GENERAL NOTES - REINFORCED CONCRETE STRUCTURES	DRG. No.
STANDARD DRAWING FOR ROADS	BK-GNRL-PEDCO-000-CV-DW-0003
STANDARD DETAILS OF MISCELLANEOUS ITEMS	BK-GNRL-PEDCO-000-CV-DW-0040
STANDARD DRAWING OF INSERT PLATES IN CONCRETE	BK-GNRL-PEDCO-000-ST-DW-0007

#### KEY PLAN




***	*****	** **	*** **	** **	*** **
REV.	DESCRIPTION	BY	DATE	BY	DATE
		CHECKED		REV. APPR.	
احمل و کلیه نسخ این نقشه و حق اقتباس متعلق به شرکت ملی مناطق نفت خیز جنوب میباشد. THE ORIGINAL AND ALL COPIES OF THIS DRAWING TOGETHER WITH THE COPYRIGHT THEREIN ARE THE SOLE PROPERTY OF N.I.S.O.C./ FIELDS					
 BINAK OILFIELD DEVELOPMENT SURFACE FACILITIES GAS COMPRESSOR STATION					
DATE	SCALE	DRAWING BY	CHECKED BY	PROJECT ENG	
NO CONSTRUCTION PERMITTED UNLESS DRAWING APPROVED					
APPROVED FOR CONSTRUCTION		BY:		DATE:	
BUDGET REF.	LOCATION	SIZE	CLASS	SERIAL NO.	SHEET
053-073-9184	F	4	M	709411	7
					DOO