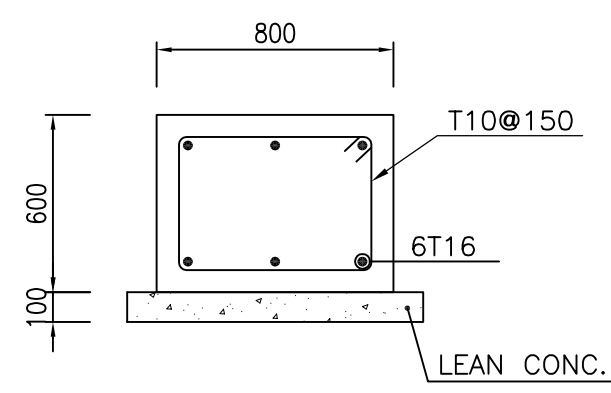
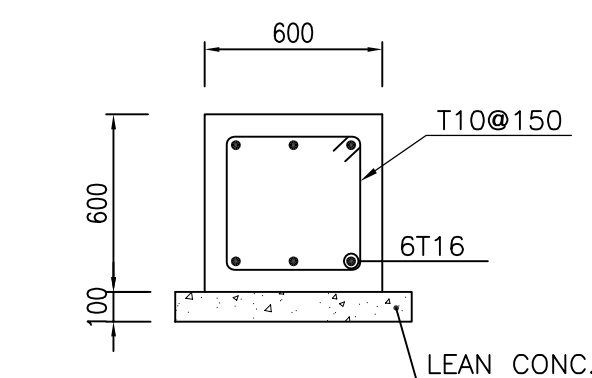
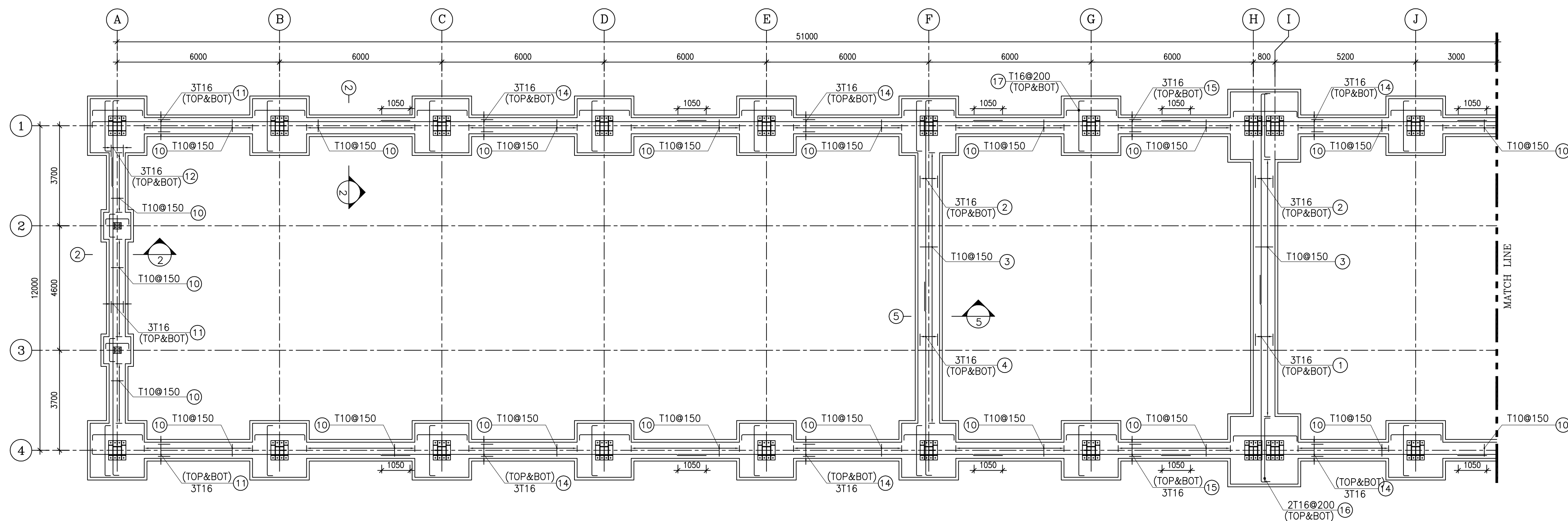
[illegible]





1:25 2 REINFORCEMENT

[illegible]

- ## NOTES
- 1) ALL ELEVATIONS AND COORDINATES ARE IN "m" AND DIMENSIONS ARE IN "mm" UNLESS OTHERWISE NOTED.
 - 2) ALL DIMENSIONS AND ELEVATIONS SHALL BE CHECKED BY THE CONTRACTOR PRIOR TO CONSTRUCTION.
 - 3) ACCORDING TO THE SPECIFICATION OF CONCRETE WORKS:
"BK-GNRL-PEDCO-000-ST-SP-0001",28 DAYS CHARACTERISTIC
COMPRESSIVE STRENGTH OF MAIN CONCRETE IS 30 MPa(ON CYLINDRICAL SPECIMEN)
 - 4) ACCORDING TO THE SPECIFICATION OF CONCRETE WORKS:
"BK-GNRL-PEDCO-000-ST-SP-0001",28 DAYS CHARACTERISTIC
COMPRESSIVE STRENGTH OF LEAN CONCRETE IS 15 MPa(ON CYLINDRICAL SPECIMEN)
 - 5) CONCRETE COVER OVER BARS SHALL BE 75mm FOR FOUNDATION AND 50mm FOR CAST IN-SITU
 - 6) REINFORCING BARS SHALL BE S400 ACCORDING TO: IS13132 AND IN839
WITH MINIMUM TENSILE YIELD STRENGTH 400 N/mm²
 - 7) THE FIRST HOOP OF THE BEAM, COLUMN OR PEDESTAL SHALL BE LOCATED NOT MORE
Than 50mm FROM THE FACE OF FOUNDATION.
 - 8) REINFORCEMENT SHALL BE ADJUSTED LOGICALLY TO SUIT THE RECESS OF ANCHOR BOLTS,
HOLES AND OTHER EMBEDDED MATERIALS.
 - 9) UNDERGROUND CONCRETE SHALL BE PROTECTED AND COATED ACCORDING TO RELEVANT SPECIFICATION.
 - 10) PORTLAND CEMENT TYPE 2 SHALL BE USED FOR CONCRETE AND LEAN CONCRETE.
 - 11) FILL MATERIAL SHALL BE COMPACTED TO NOT LESS THAN 95% OF THE MAXIMUM
DENSITY AS DETERMINED BY ASTM D-1557 (MODIFIED PROCTOR) METHOD.

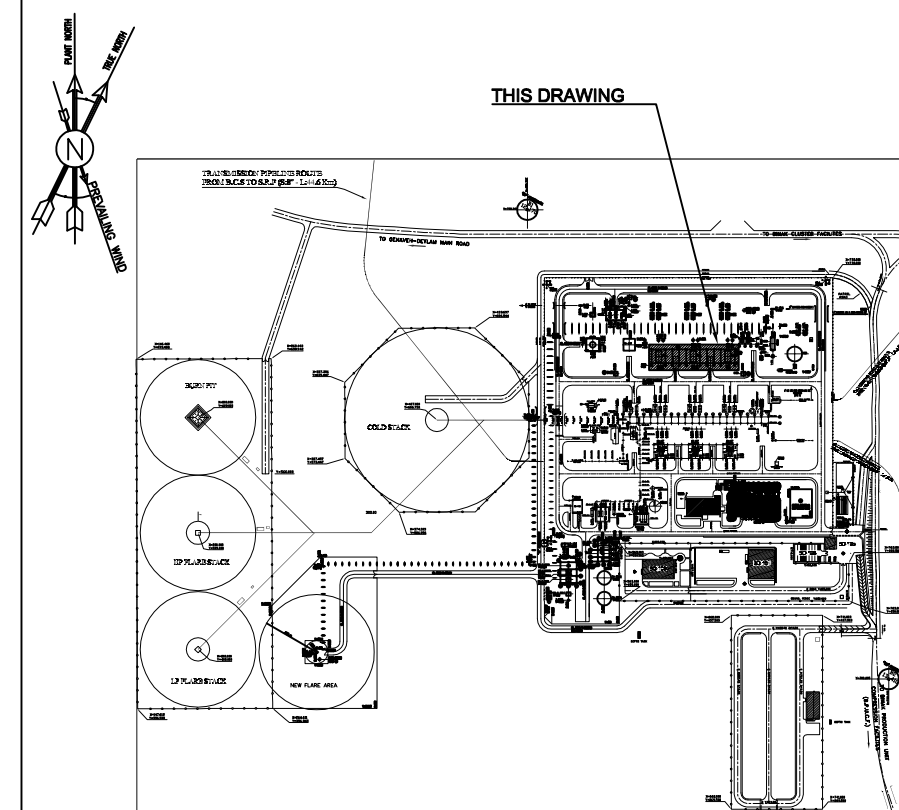
$$\pm 0.00 = +11.20(\text{H.P.P.})$$

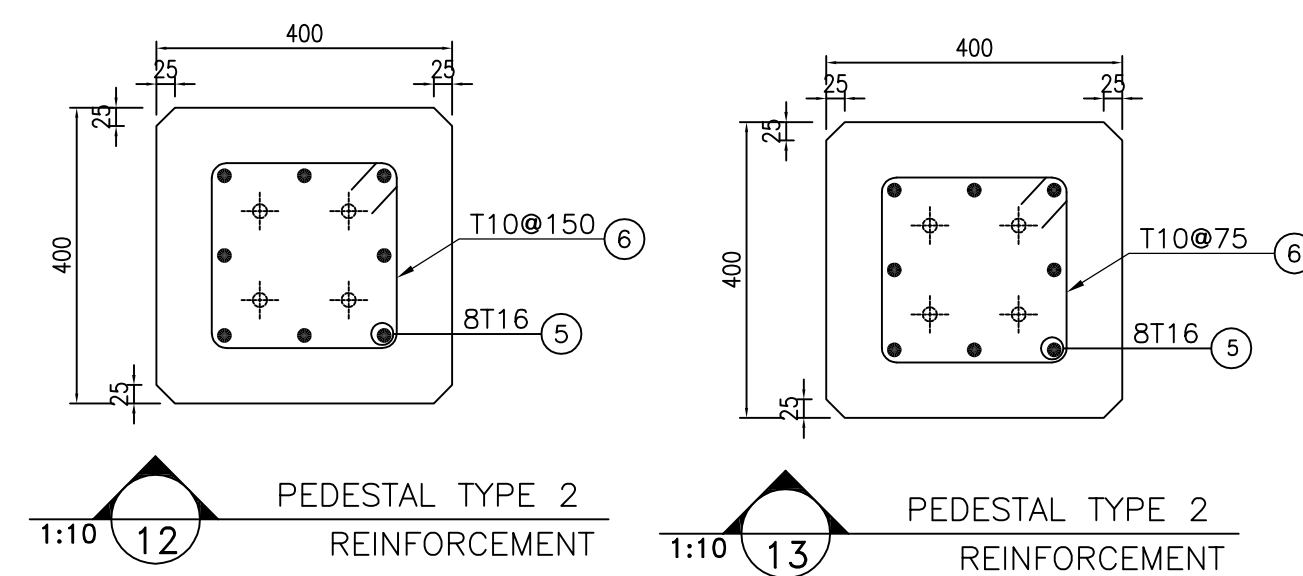
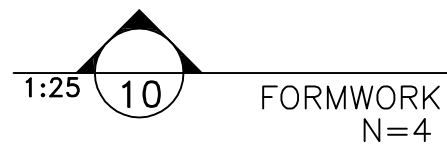
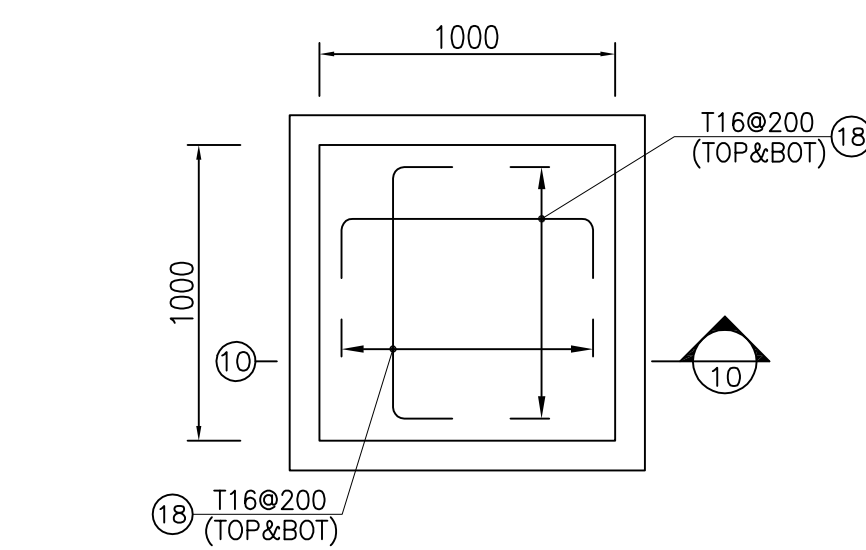
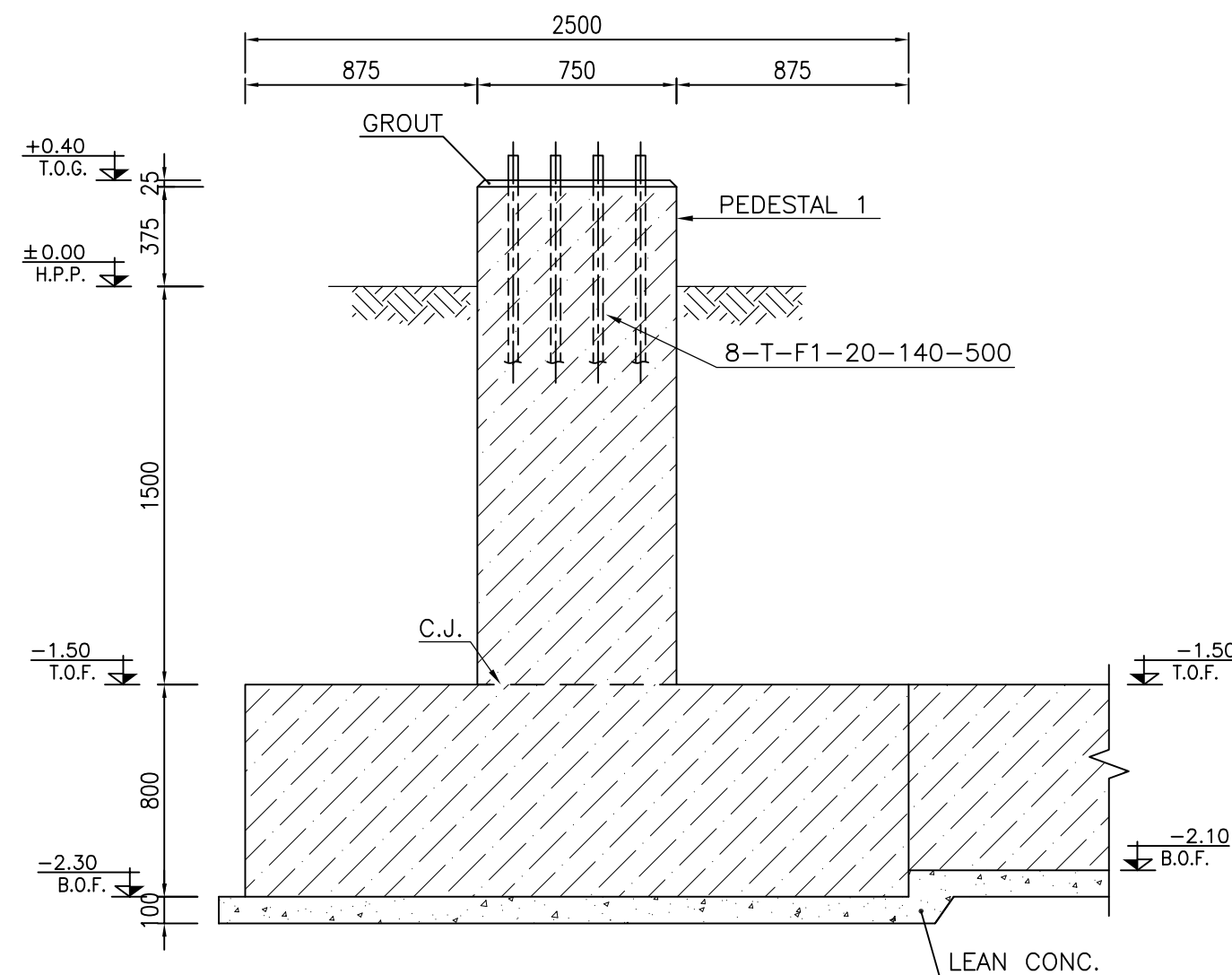
LEGEND AND ABBREVIATION

	REINFORCED CONCRETE
	LEAN CONCRETE
T.O.F.	TOP OF FOUNDATION
T.O.G.	TOP OF GROUT
T.O.PED	TOP OF PEDESTAL
B.O.F.	BOTTOM OF FOUNDATION

REFERENCE DRAWING	DRG. No.
ARCHITECTURAL DRAWING FOR GAS COMPRESSOR SHELTER	BK-GCS-PEDCO-120-AR-DW-0003
GENERAL NOTES-REINFORCED CONCRETE STRUCTURES	BK-GNRRAL-PEDCO-0000-ST-DW-0002
TYPICAL DETAILS FOR ANCHOR BOLTS	BK-GNRRAL-PEDCO-0000-ST-SP-0001
STRUCTURAL DRAWING FOR GAS COMPRESSOR SHELTER	BK-GCS-PEDCO-120-ST-DW-0060
SPECIFICATION FOR CONCRETE WORK	BK-GNRRAL-PEDCO-0000-ST-SP-0001
CALCULATION NOTE FOR GAS COMPRESSOR SHELTER	BK-GCS-PEDCO-120-ST-CN-0003
GEOTECHNICAL INVESTIGATION REPORT FOR COMPRESSOR STATION	BK-GCS-PEDCO-120-PI-RT-0001
UNIT PLOT PLAN DRAWING	BK-GCS-PEDCO-120-PI-PY-0001

KEY PLAN





[illegible][illegible]

- ## NOTES
- 1) ALL ELEVATIONS AND COORDINATES ARE IN "m" AND DIMENSIONS ARE IN "mm" UNLESS OTHERWISE NOTED.
 - 2) ALL DIMENSIONS AND ELEVATIONS SHALL BE CHECKED BY THE CONTRACTOR PRIOR TO CONSTRUCTION.
 - 3) ACCORDING TO THE SPECIFICATION OF CONCRETE WORKS:
"BK-GNRL-PEDCO-000-ST-SP-0001", 28 DAYS CHARACTERISTIC COMPRESSIVE STRENGTH OF MAIN CONCRETE IS 30 MPa (ON CYLINDRICAL SPECIMEN)
 - 4) ACCORDING TO THE SPECIFICATION OF CONCRETE WORKS:
"BK-GNRL-PEDCO-000-ST-SP-0001", 28 DAYS CHARACTERISTIC COMPRESSIVE STRENGTH OF LEAN CONCRETE IS 15 MPa (ON CYLINDRICAL SPECIMEN)
 - 5) CONCRETE COVER OVER BARS SHALL BE 75mm FOR FOUNDATION AND 50mm FOR CAST IN-SITU
 - 6) REINFORCING BARS SHALL BE S400 ACCORDING TO: IRS1312 AND INCB39
WITH MINIMUM TENSILE YIELD STRENGTH 400 N/mm²
 - 7) THE FIRST HOOP OF THE BEAM, COLUMN OR PEDestal SHALL BE LOCATED NOT MORE THAN 50mm FROM THE FACE OF FOUNDATION.
 - 8) REINFORCEMENT SHALL BE ADJUSTED LOGICALLY TO SUIT THE RECESS OF ANCHOR BOLTS, HOLES AND OTHER EMBEDDED MATERIALS.
 - 9) UNDERGROUND CONCRETE SHALL BE PROTECTED AND COATED ACCORDING TO RELEVANT SPECIFICATION.
 - 10) PORTLAND CEMENT TYPE 2 SHALL BE USED FOR CONCRETE AND LEAN CONCRETE.
 - 11) FILL MATERIAL SHALL BE COMPACTED TO NOT LESS THAN 95% OF THE MAXIMUM DENSITY AS DETERMINED BY ASTM D-1557 (MODIFIED PROCTOR) METHOD.

$$\pm 0.00 = +11.20(\text{H.P.P.})$$

LEGEND AND ABBREVIATION

	REINFORCED CONCRETE
	LEAN CONCRETE
T.O.F.	TOP OF FOUNDATION
T.O.G.	TOP OF GROUT
T.O.PED	TOP OF PEDESTAL
B.O.F.	BOTTOM OF FOUNDATION

REFERENCE DRAWING	DRG. No.
ARCHITECTURAL DRAWING FOR GAS COMPRESSOR SHELTER	BK-GCS-PEDCO-120-AR-DW-0003
GENERAL NOTES-REINFORCED CONCRETE STRUCTURES	BK-GNRL-PEDCO-000-ST-DW-0002
TYPICAL DETAILS FOR ANCHOR BOLTS	BK-GNRL-PEDCO-000-ST-SP-0001
STRUCTURAL DRAWING FOR GAS COMPRESSOR SHELTER	BK-GCS-PEDCO-120-ST-DW-0060
SPECIFICATION FOR CONCRETE WORK	BK-GNRL-PEDCO-000-ST-SP-0001
CALCULATION NOTE FOR GAS COMPRESSOR SHELTER	BK-GCS-PEDCO-120-ST-CN-0003
GEOTECHNICAL INVESTIGATION REPORT FOR COMPRESSOR STATION	BK-GCS-PEDCO-120-ST-GR-0001
UNIT PLOT PLAN DRAWING	BK-GCS-PEDCO-120-PI-PTY-0001

KEY PLAN

