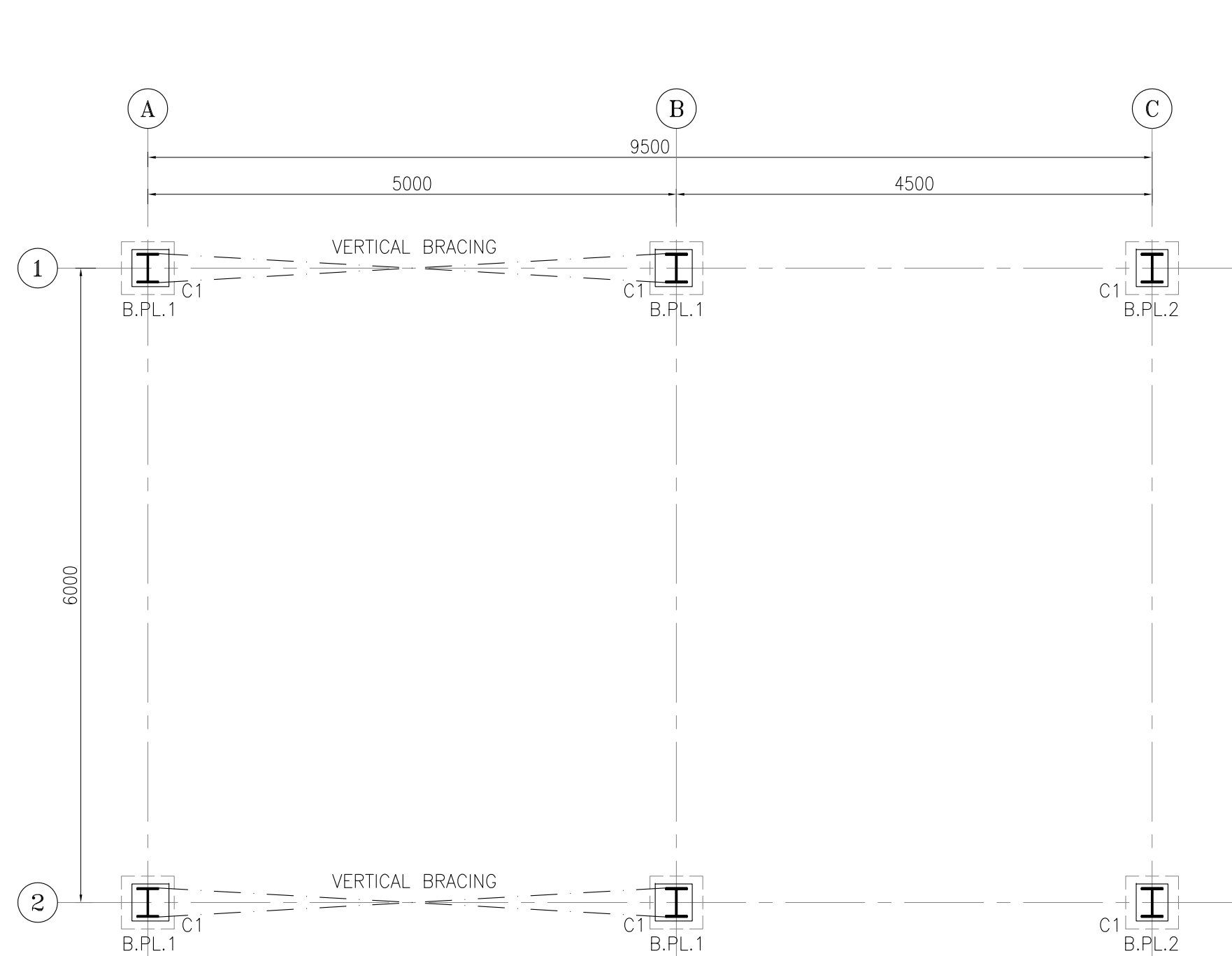
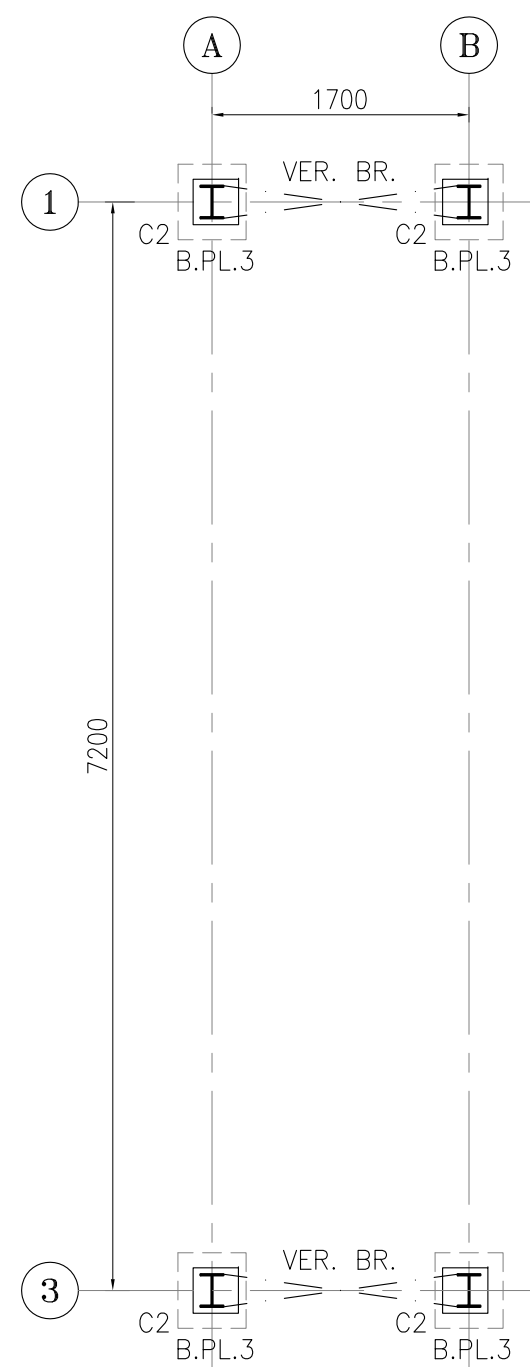


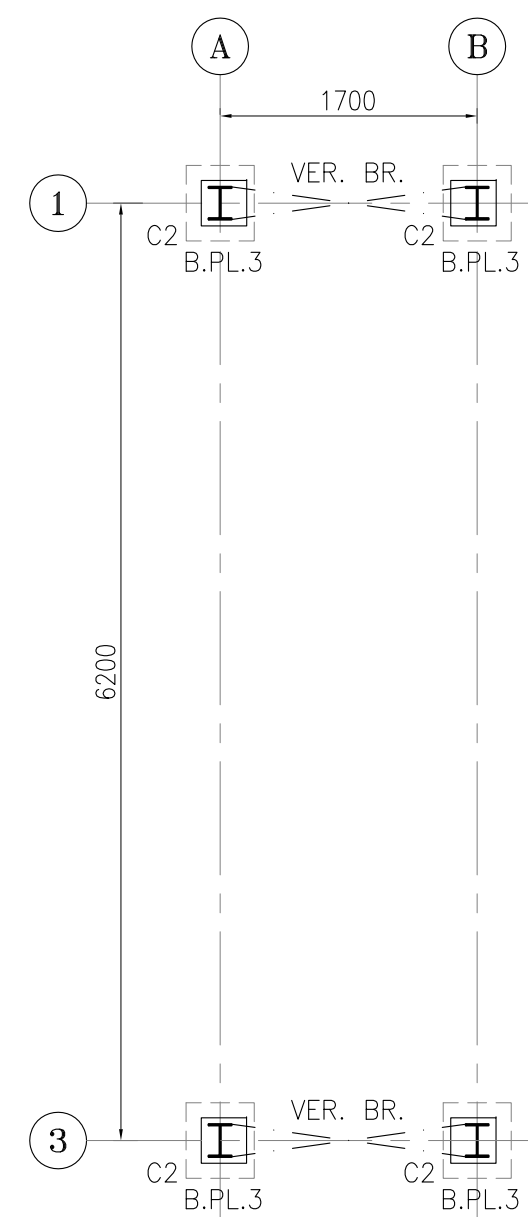
1:100 1 PLATFORMS KEY PLAN LAYOUTS



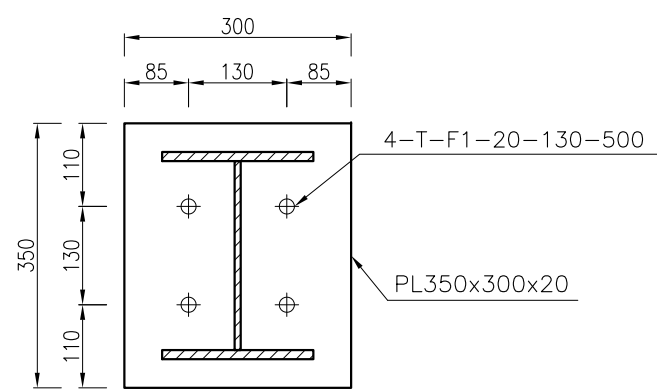
1:50  COLUMN & BASE PLATE FORMWORK PLAN
PLATFORM TYPE 1 (TRAIN A,B&C)



1:50  COLUMN & BASE PLATE FORMWORK PLAN
PLATFORM TYPE 2 (TRAIN A)

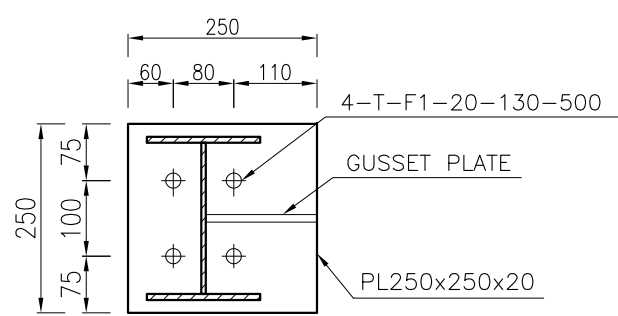


1:50  COLUMN & BASE PLATE FORMWORK PLAN
PLATFORM TYPE 3 (TRAIN B&C)



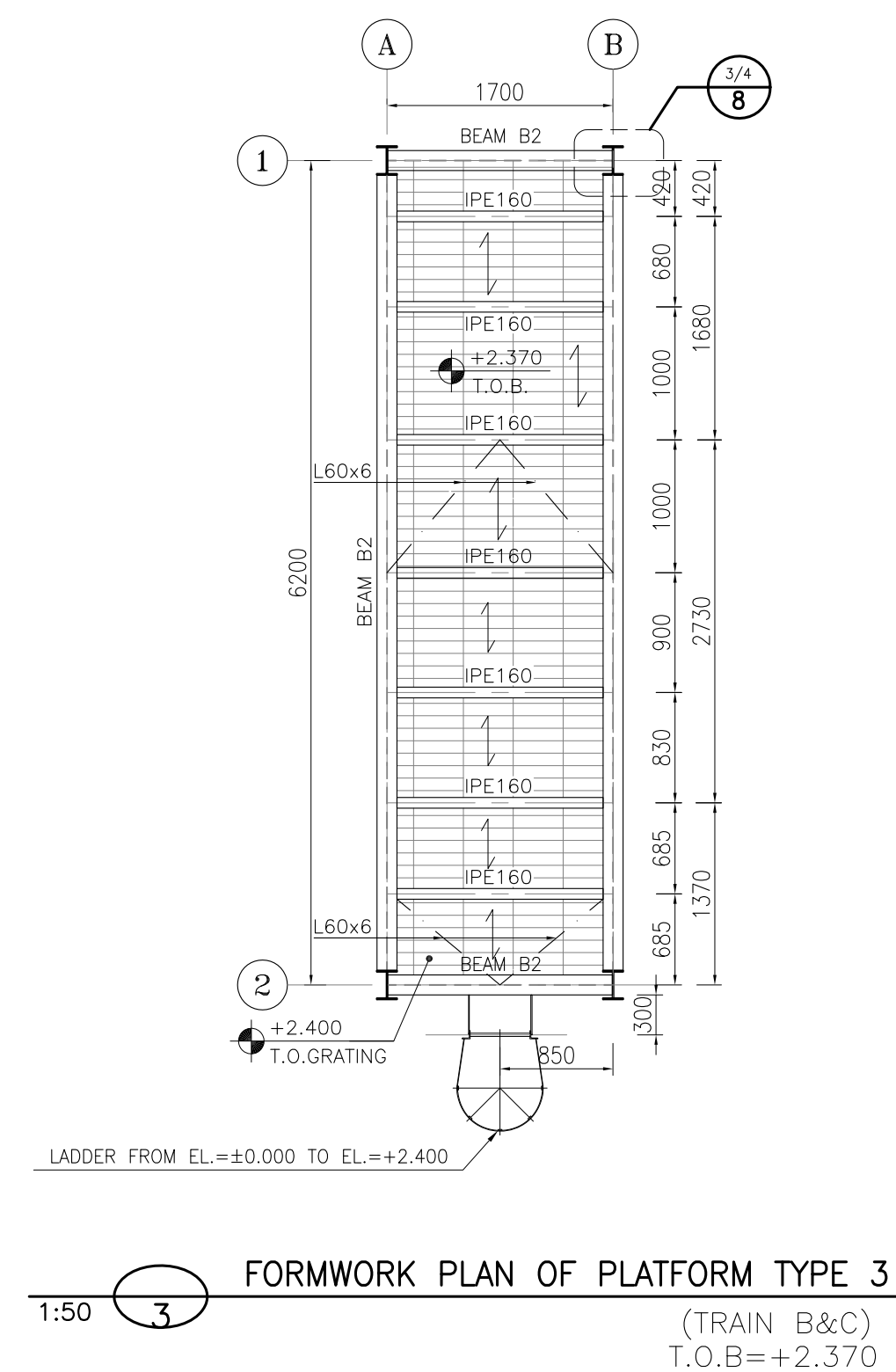
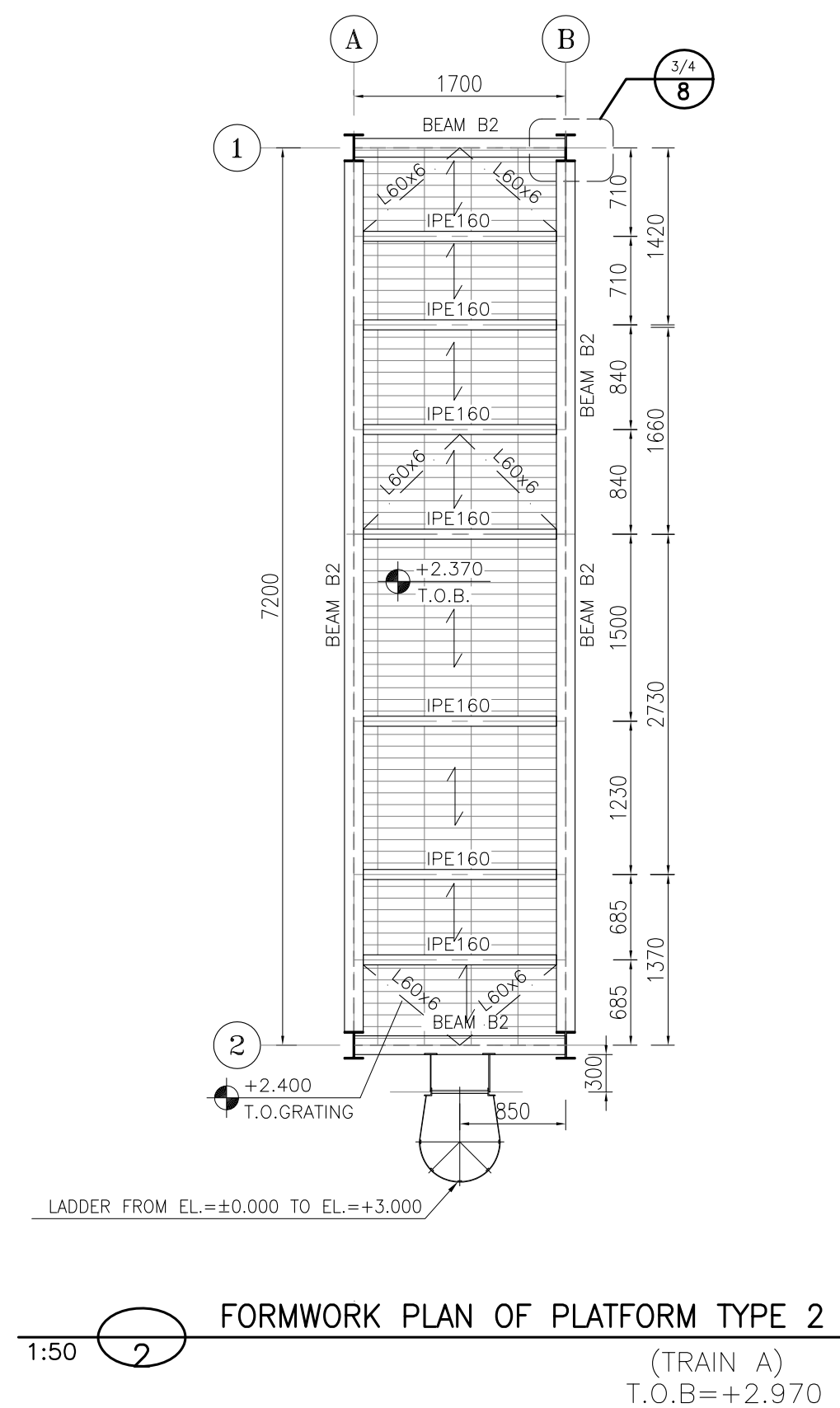
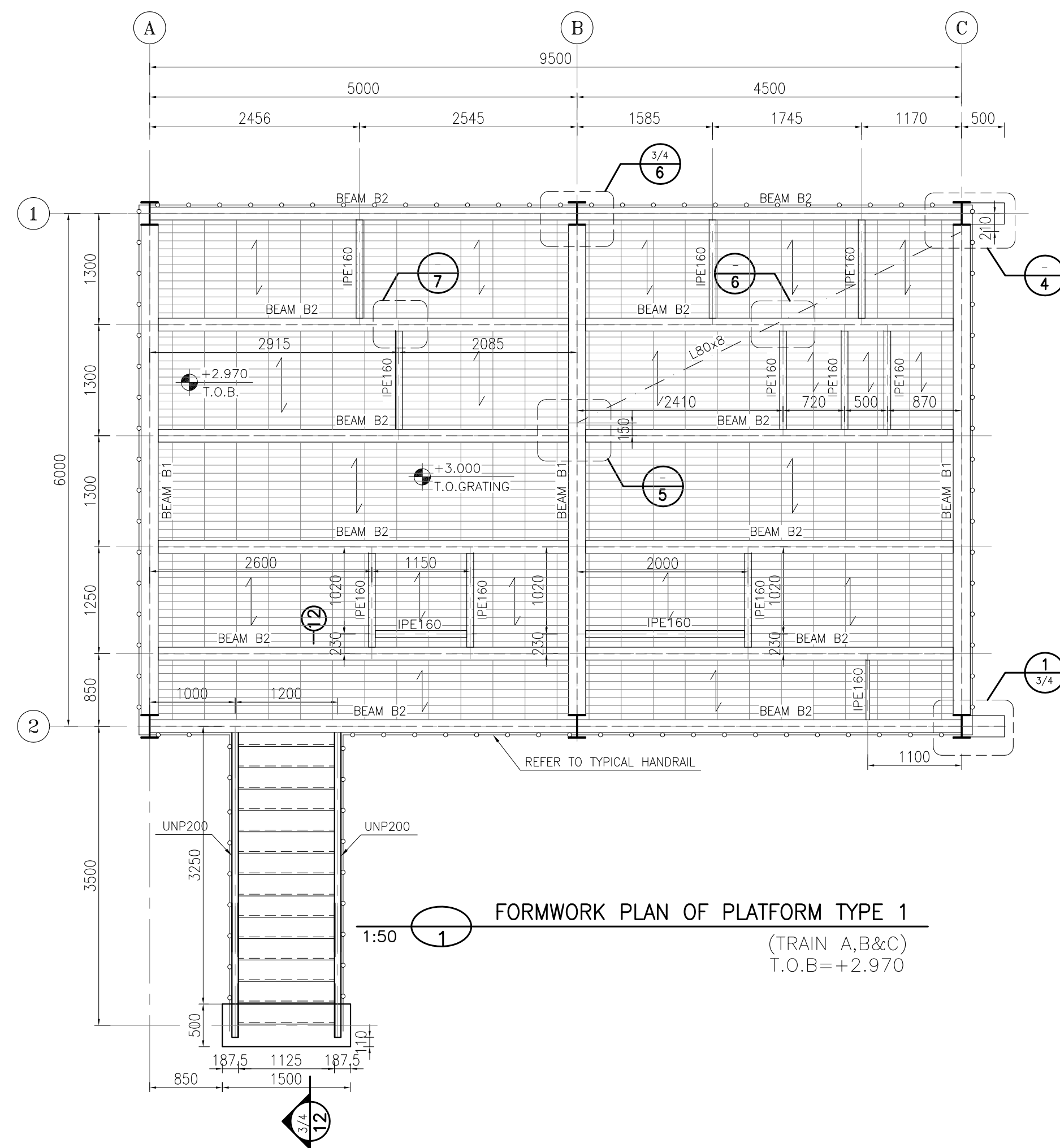
1:10  BASE PLATE 1
N=4x3




1:10  BASE PLATE 2
N=2x3



1:10  BASE PLATE 3
N=4x3

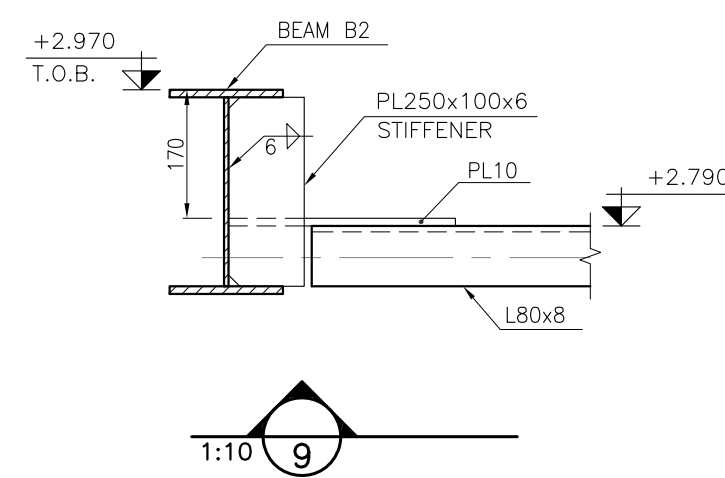
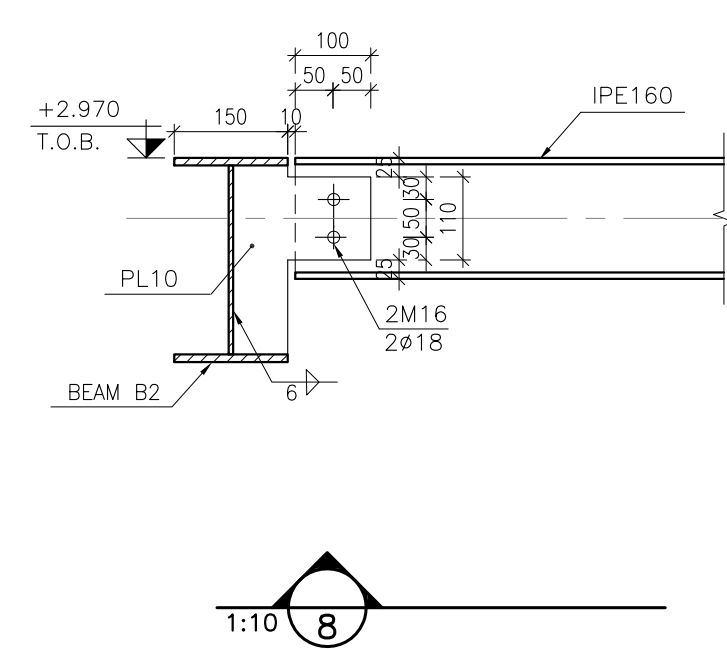
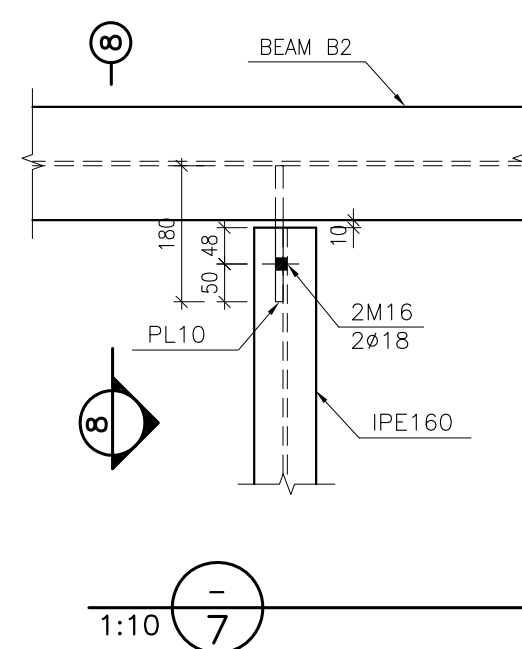
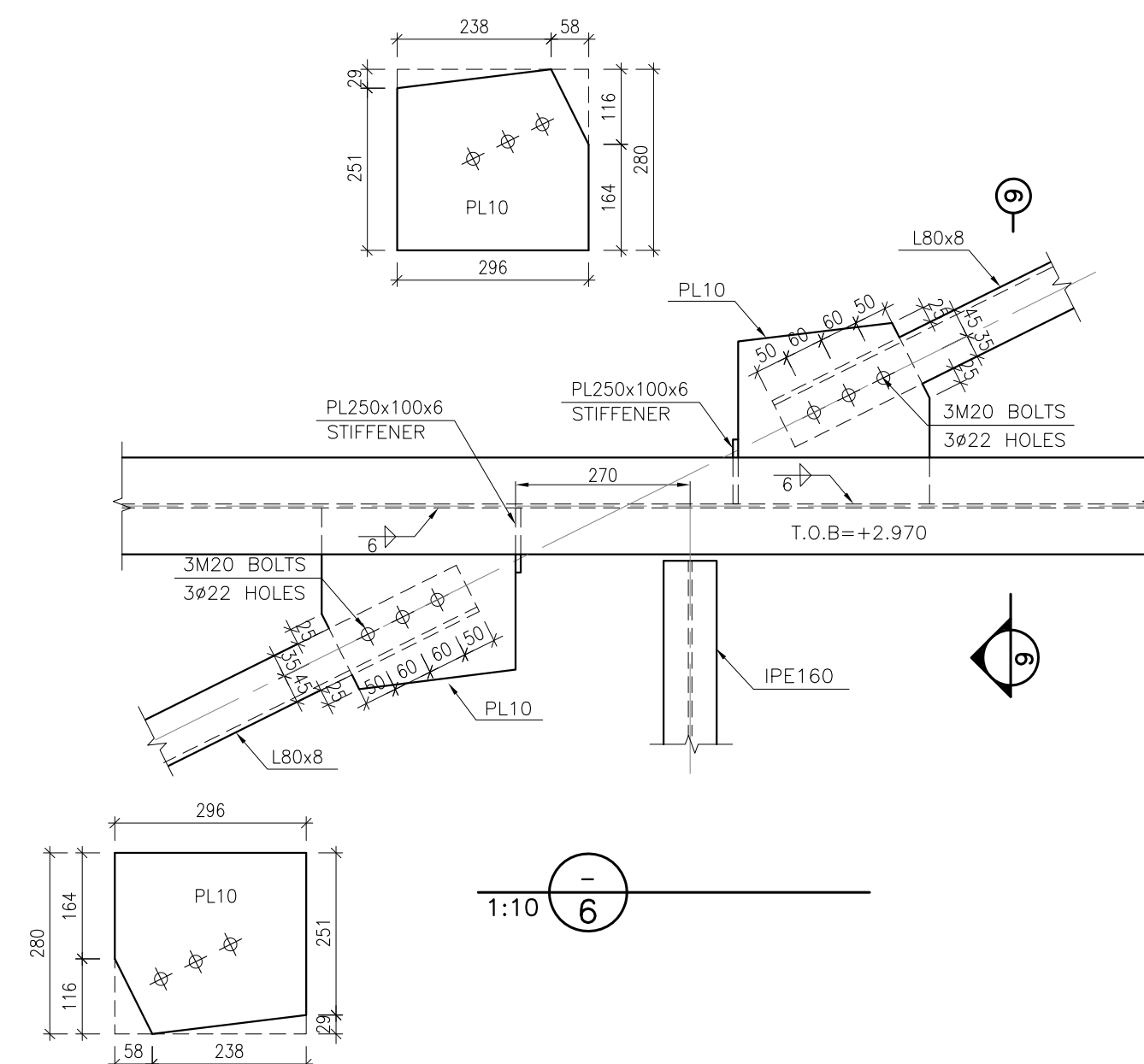
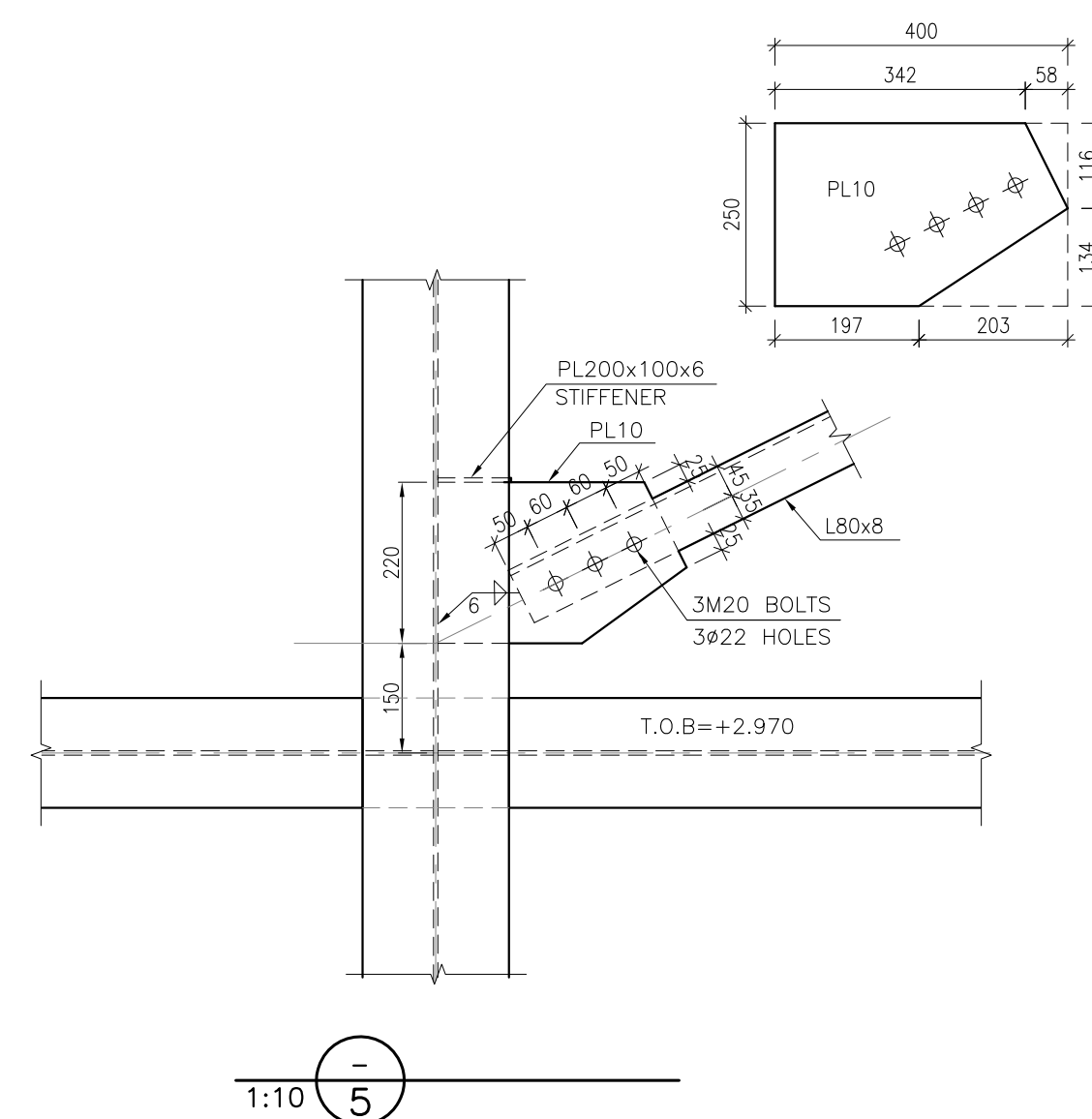
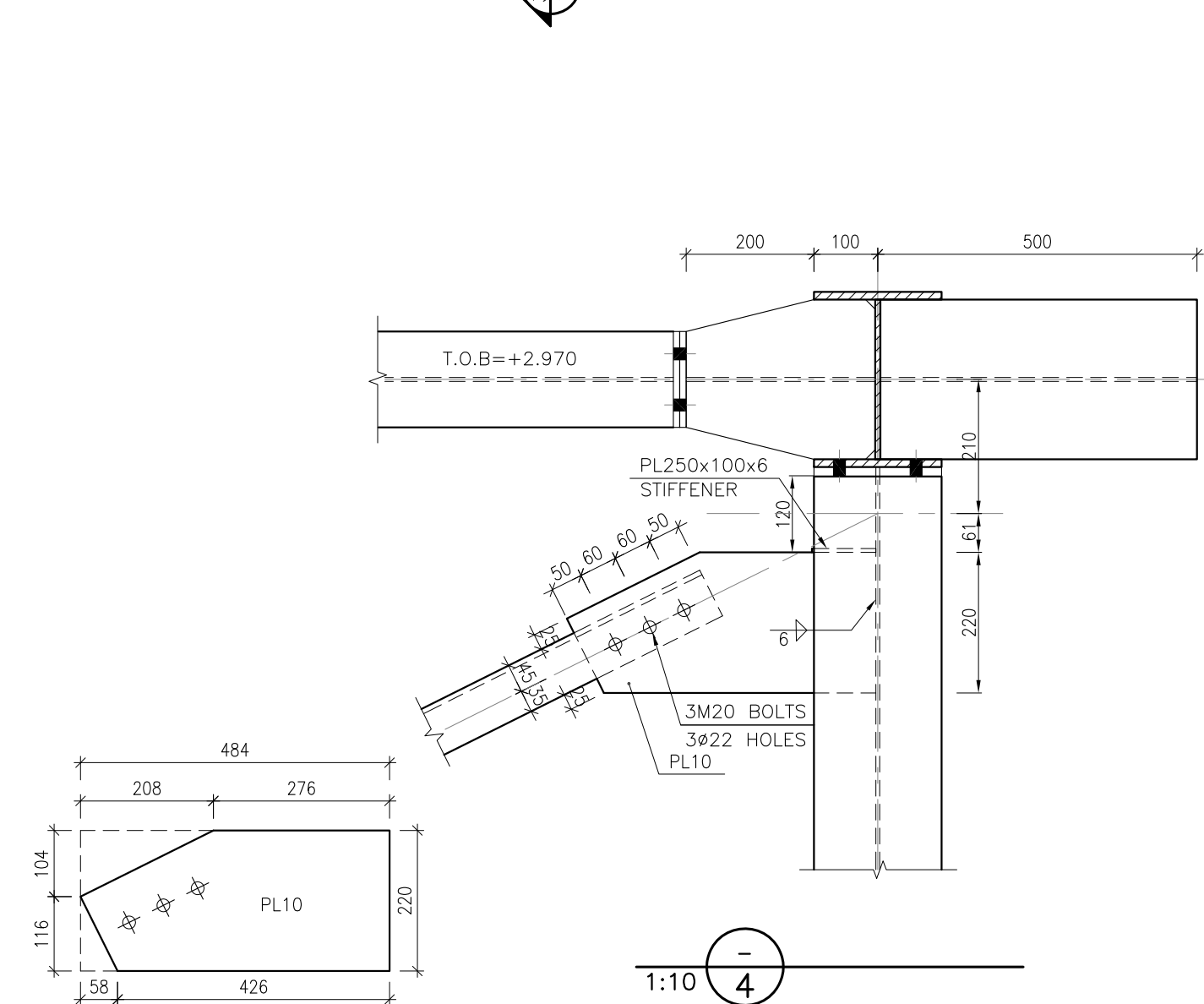
[illegible]

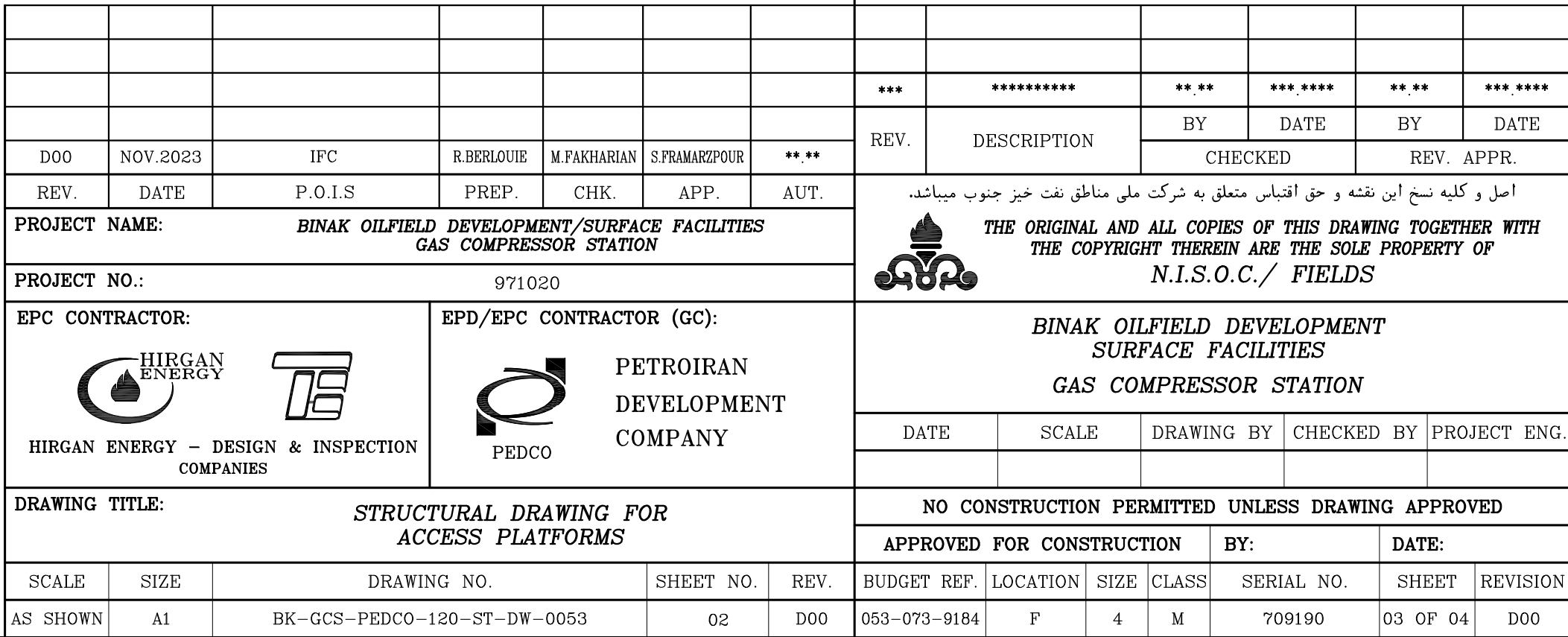
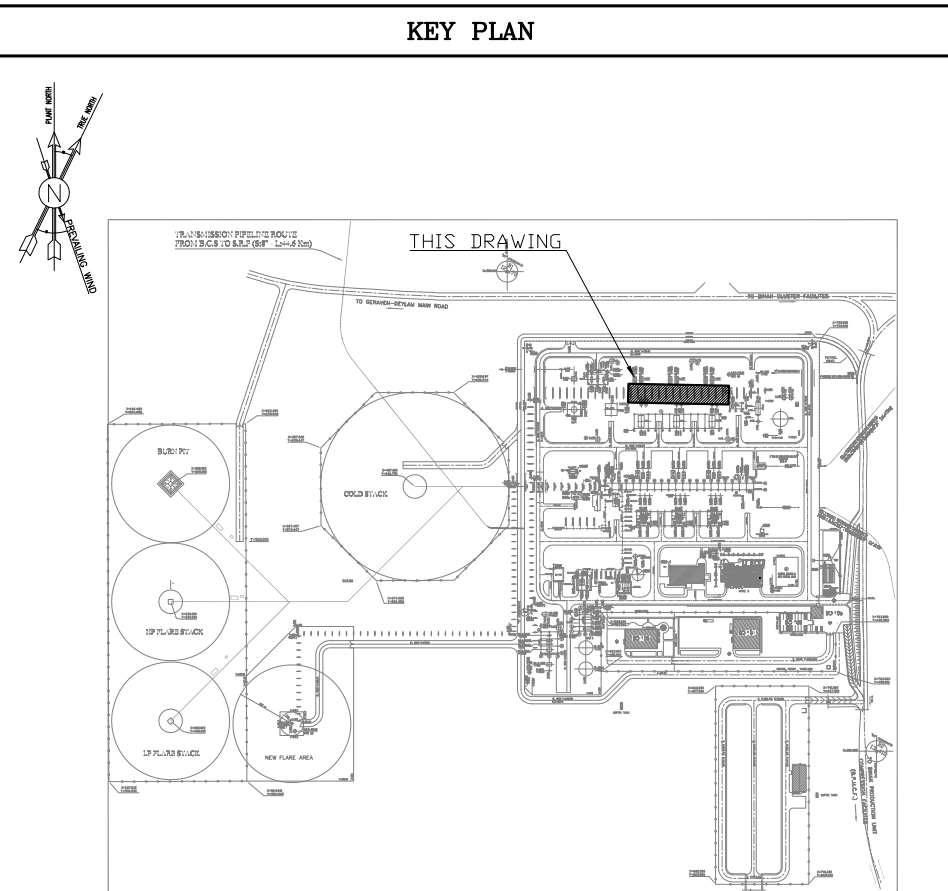
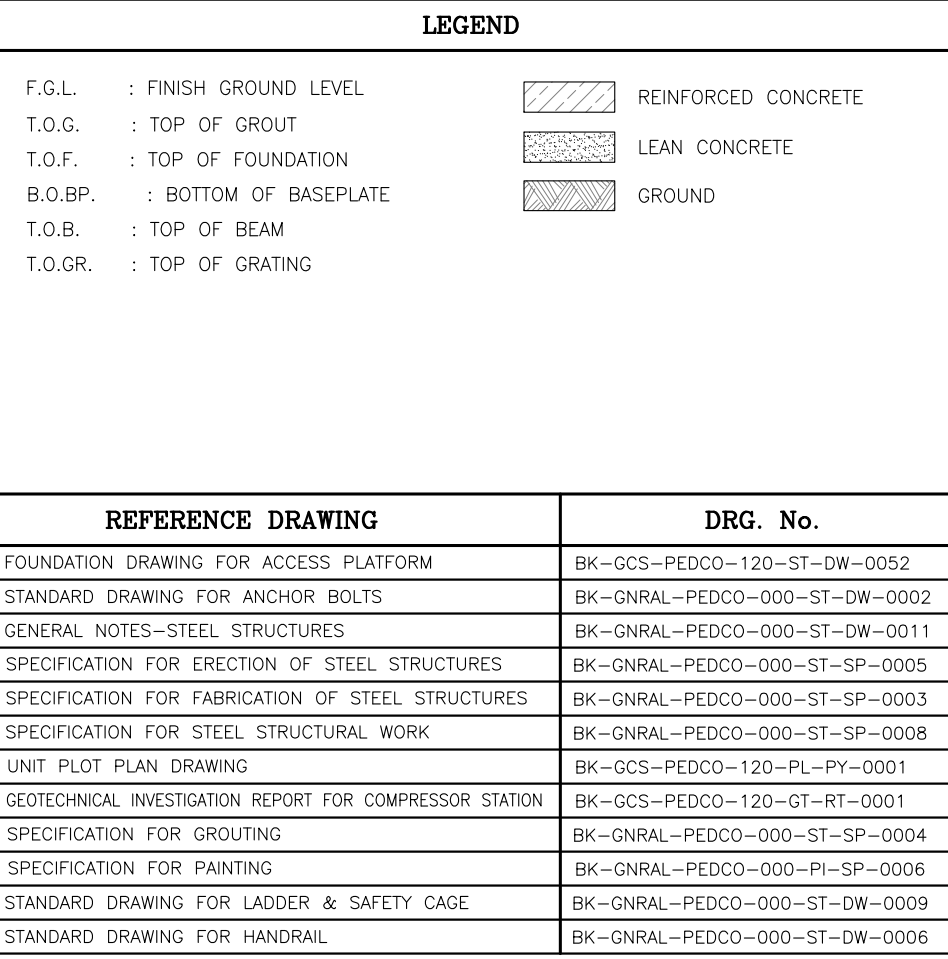
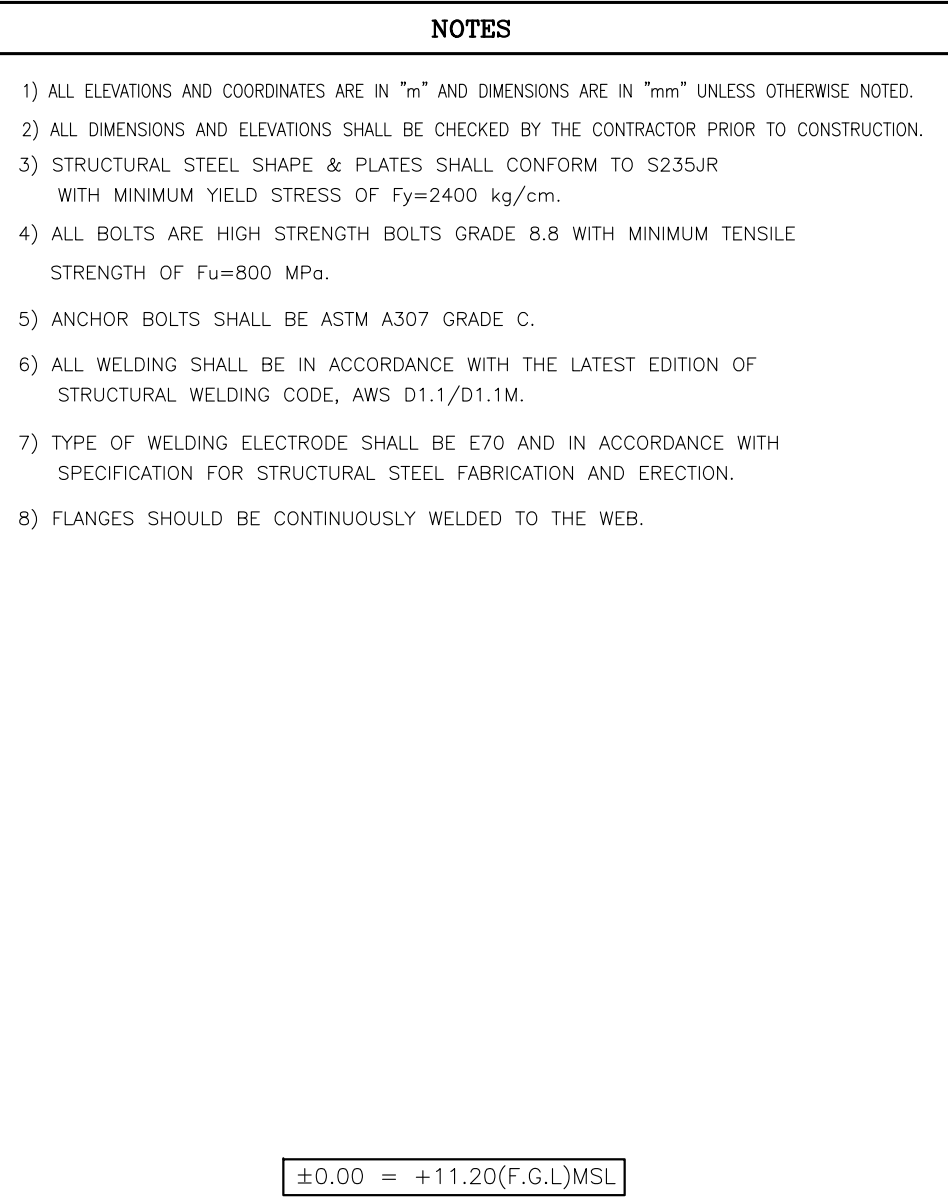


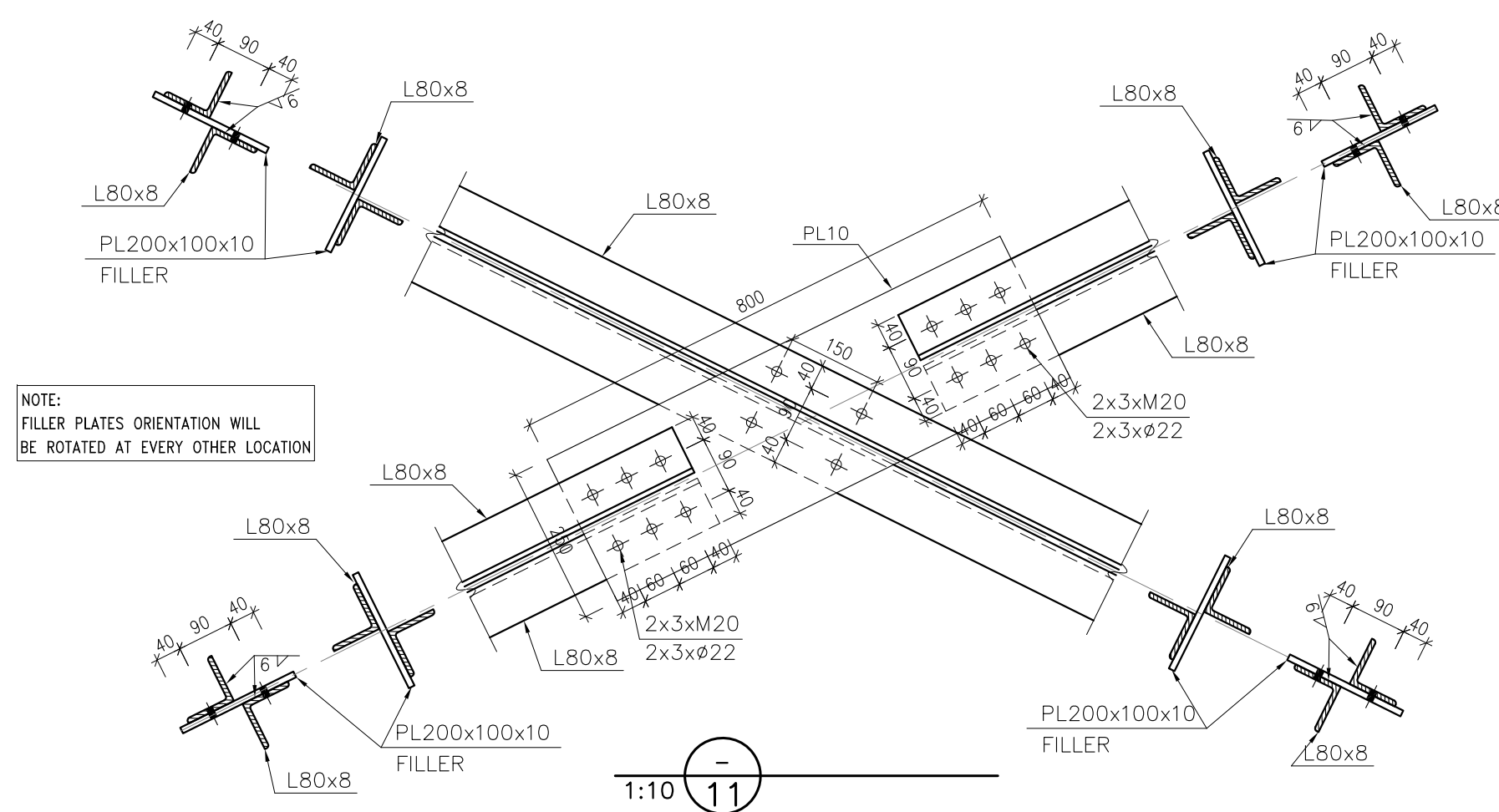
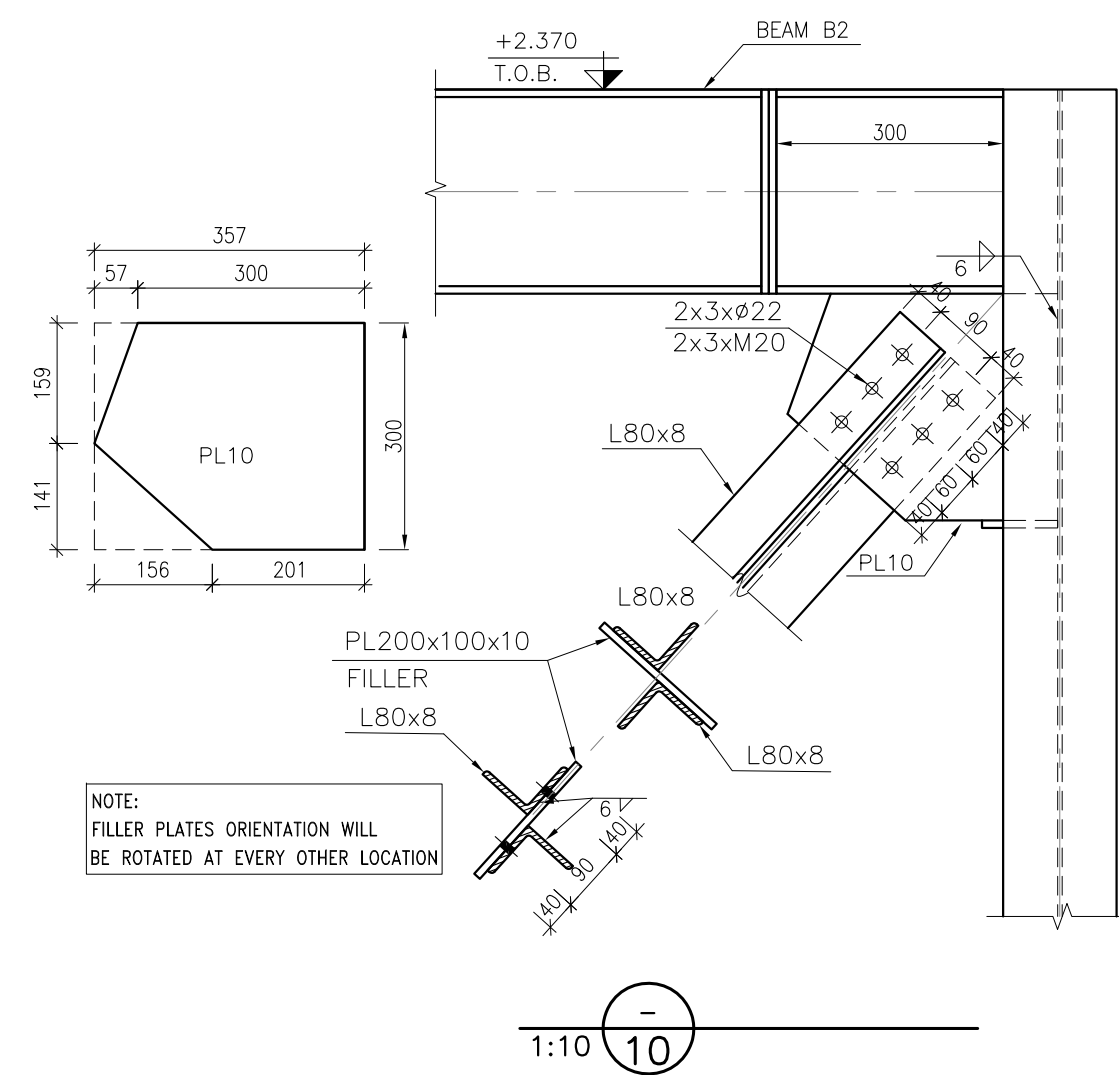
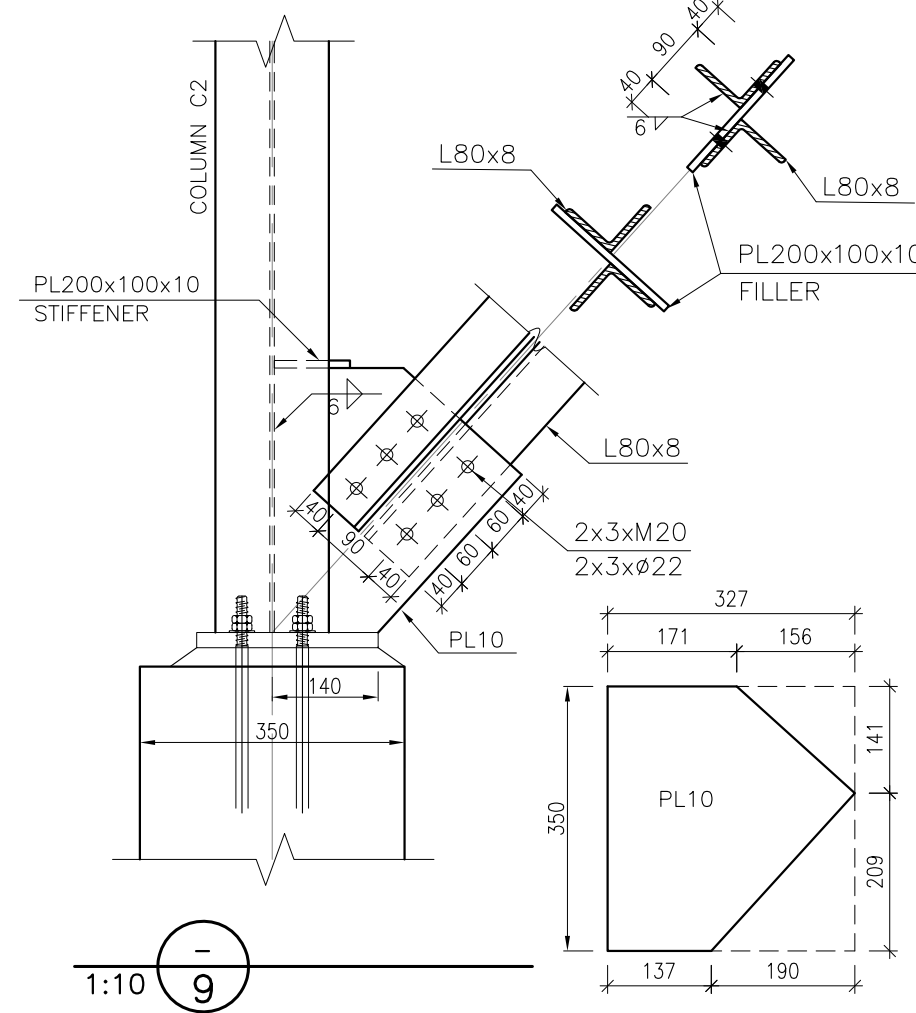
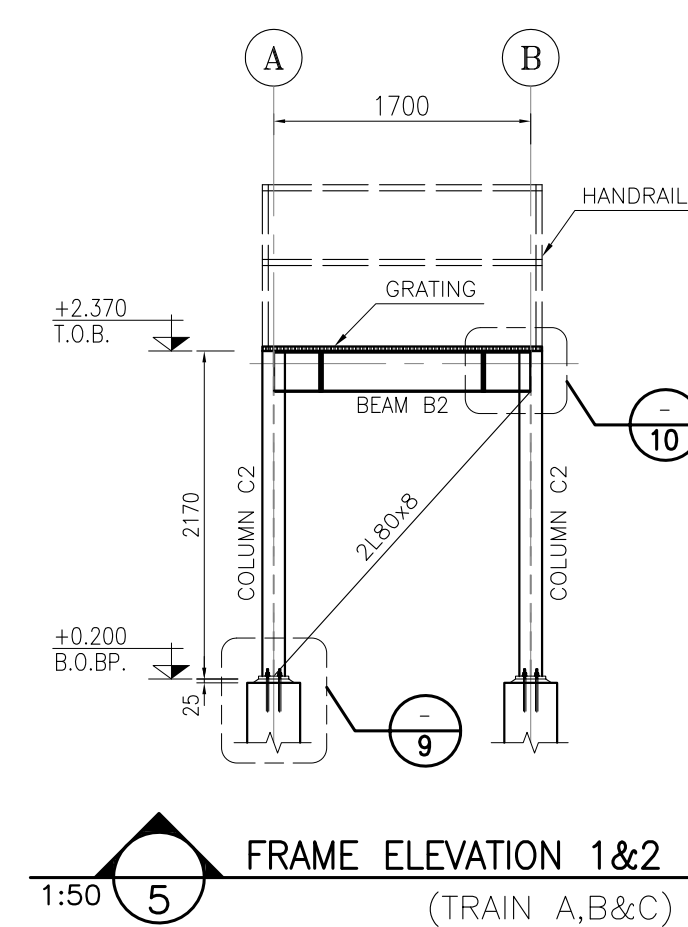
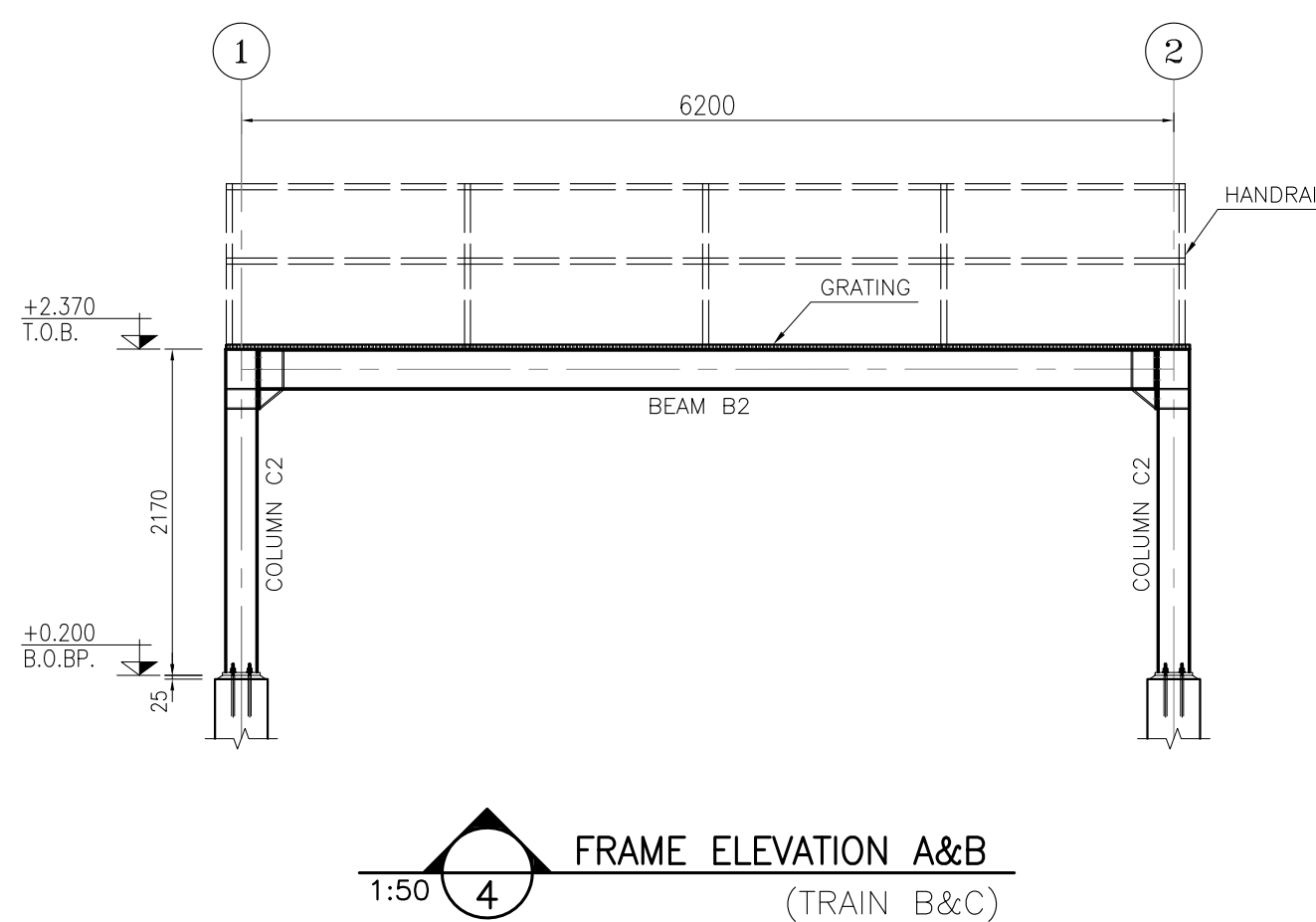
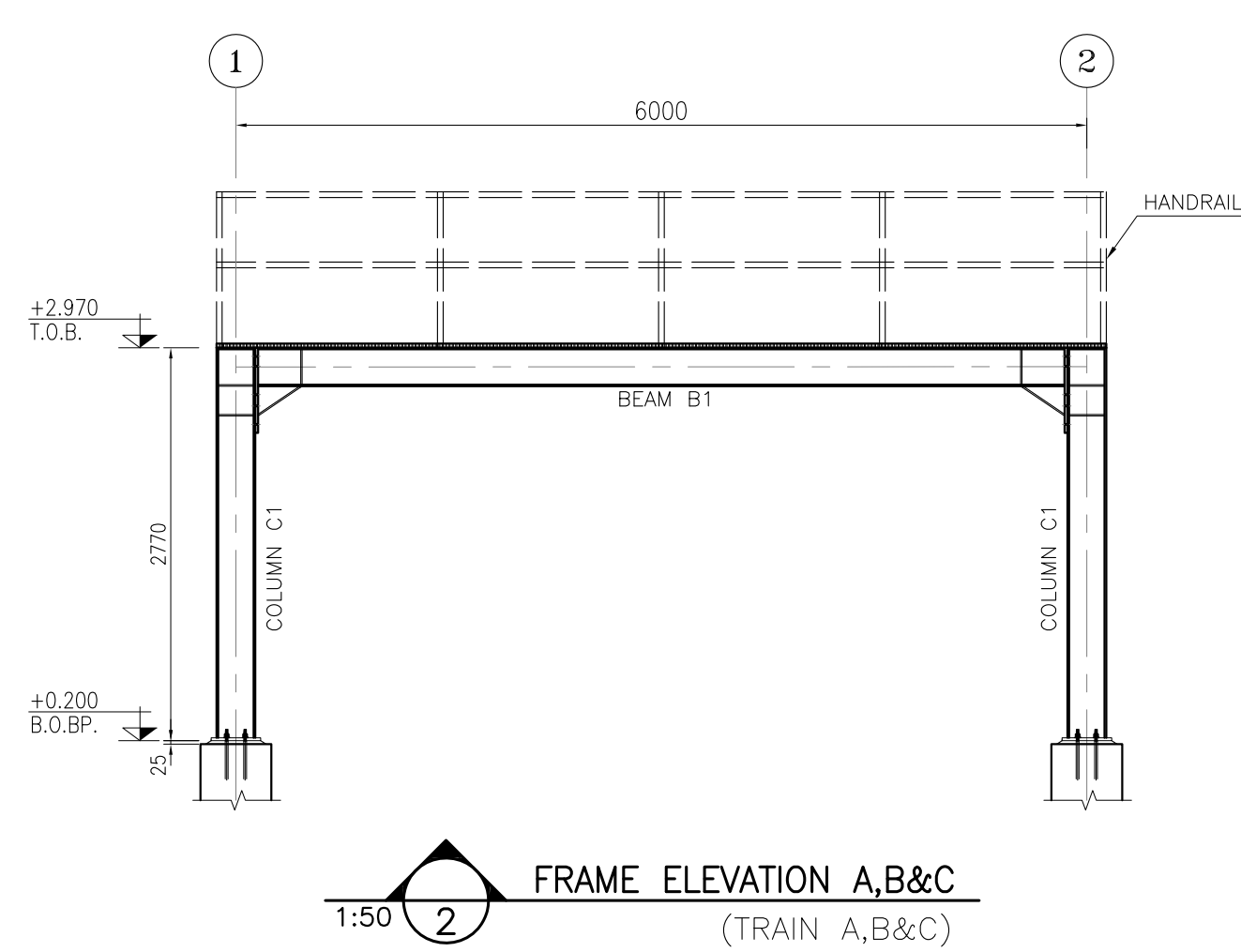
- | LEGEND | | |
|---------|-----------------------|---|
| F.G.L. | : FINISH GROUND LEVEL |  REINFORCED CONCRETE |
| T.O.G. | : TOP OF GROUT | |
| T.O.F. | : TOP OF FOUNDATION |  LEAN CONCRETE |
| B.O.BP. | : BOTTOM OF BASEPLATE | |
| T.O.B. | : TOP OF BEAM |  GROUND |
| T.O.GR. | : TOP OF GRATING | |

REFERENCE DRAWING	DRG. No.
FOUNDATION DRAWING FOR ACCESS PLATFORM	BK-GCS-PEDCO-120-ST-DW-0052
STANDARD DRAWING FOR ANCHOR BOLTS	BK-GNRAL-PEDCO-000-ST-DW-0001
GENERAL NOTES-STEEL STRUCTURES	BK-GNRAL-PEDCO-000-ST-DW-0011
SPECIFICATION FOR ERECTION OF STEEL STRUCTURES	BK-GNRAL-PEDCO-000-ST-SP-0008
SPECIFICATION FOR FABRICATION OF STEEL STRUCTURES	BK-GNRAL-PEDCO-000-ST-SP-0001
SPECIFICATION FOR STEEL STRUCTURAL WORK	BK-GNRAL-PEDCO-000-ST-SP-0008
UNIT PLOT PLAN DRAWING	BK-GCS-PEDCO-120-PL-PY-0001
GEOTECHNICAL INVESTIGATION REPORT FOR COMPRESSOR STATION	BK-GCS-PEDCO-120-GT-RT-0001
SPECIFICATION FOR GROUTING	BK-GNRAL-PEDCO-000-ST-SP-0004
SPECIFICATION FOR PAINTING	BK-GNRAL-PEDCO-000-PM-SP-0006
STANDARD DRAWING FOR LADDER & SAFETY CAGE	BK-GNRAL-PEDCO-000-ST-DW-0001
STANDARD DRAWING FOR HANDRAIL	BK-GNRAL-PEDCO-000-ST-DW-0001

KEY PLAN

[illegible]








- ## NOTES
- 1) ALL ELEVATIONS AND COORDINATES ARE IN "m" AND DIMENSIONS ARE IN "mm" UNLESS OTHERWISE NOTED.
 - 2) ALL DIMENSIONS AND ELEVATIONS SHALL BE CHECKED BY THE CONTRACTOR PRIOR TO CONSTRUCTION.
 - 3) STRUCTURAL STEEL SHAPE & PLATES SHALL CONFORM TO S235JR
WITH MINIMUM YIELD STRESS OF $F_y=2400 \text{ kg/cm}$.
 - 4) ALL BOLTS ARE HIGH STRENGTH BOLTS GRADE 8.8 WITH MINIMUM TENSILE STRENGTH OF $F_u=800 \text{ MPa}$.
 - 5) ANCHOR BOLTS SHALL BE ASTM A307 GRADE C.
 - 6) ALL WELDING SHALL BE IN ACCORDANCE WITH THE LATEST EDITION OF
STRUCTURAL WELDING CODE, AWS D1.1/D1.1M.
 - 7) TYPE OF WELDING ELECTRODE SHALL BE E70 AND IN ACCORDANCE WITH
SPECIFICATION FOR STRUCTURAL STEEL FABRICATION AND ERECTION.
 - 8) FLANGES SHOULD BE CONTINUOUSLY WELDED TO THE WEB.

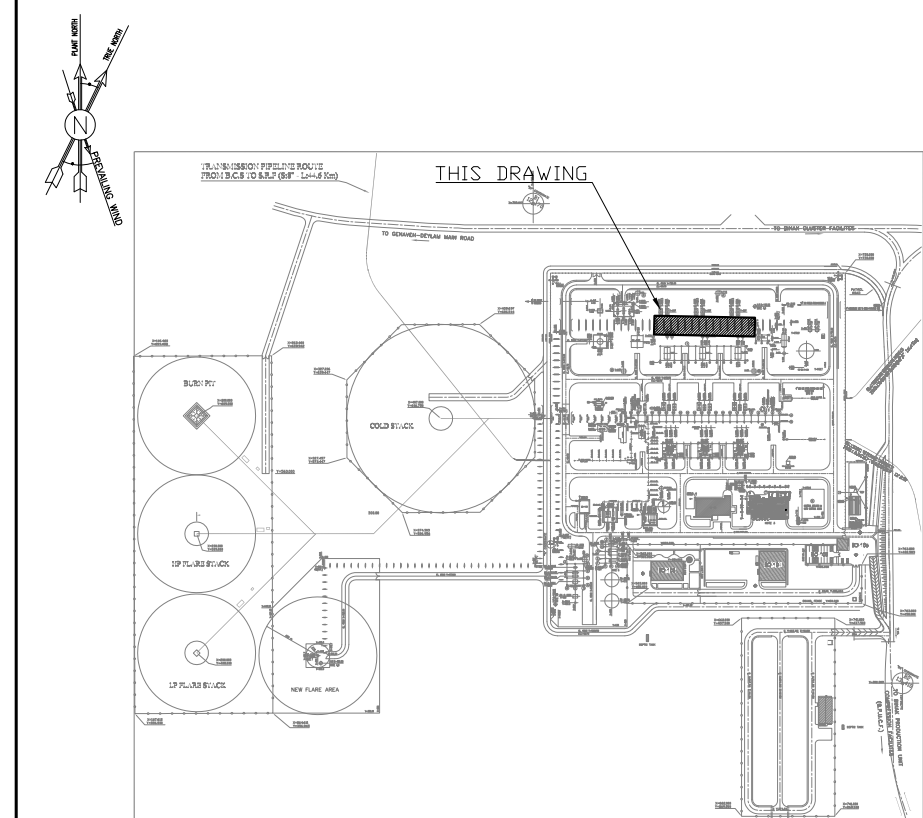
$$\pm 0.00 = +11.20(\text{F.G.L})\text{MSL}$$

LEGEND

F.G.L.	: FINISH GROUND LEVEL		REINFORCED CONCRETE
T.O.G.	: TOP OF GROUT		LEAN CONCRETE
T.O.F.	: TOP OF FOUNDATION		GROUND
B.O.BP.	: BOTTOM OF BASEPLATE		
T.O.B.	: TOP OF BEAM		
T.O.GR.	: TOP OF GRATING		

REFERENCE	DRAWING	DRG. No.
FOUNDATION DRAWING FOR ACCESS PLATFORM	BK-GCS-PEDCO-120-ST-DW-0052	
STANDARD DRAWING FOR ANCHOR BOLTS	BK-GNARL-PEDCO-000-ST-DW-0002	
GENERAL NOTES-STEEL STRUCTURES	BK-GNARL-PEDCO-000-ST-DW-0011	
SPECIFICATION FOR ERECTION OF STEEL STRUCTURES	BK-GNARL-PEDCO-000-ST-SP-0005	
SPECIFICATION FOR FABRICATION OF STEEL STRUCTURES	BK-GNARL-PEDCO-000-ST-SP-0003	
SPECIFICATION FOR STEEL STRUCTURAL WORK	BK-GNARL-PEDCO-000-ST-SP-0008	
UNIT PLOT PLAIN DRAWING	BK-GCS-PEDCO-120-PL-PY-0001	
GEOTECHNICAL INVESTIGATION REPORT FOR COMPRESSOR STATION	BK-GCS-PEDCO-120-GT-RT-0001	
SPECIFICATION FOR GROUTING	BK-GNARL-PEDCO-000-ST-SP-0004	
SPECIFICATION FOR PAINTING	BK-GNARL-PEDCO-000-PI-SP-0006	
STANDARD DRAWING FOR LADDER & SAFETY CAGE	BK-GNARL-PEDCO-000-ST-DW-0009	
STANDARD DRAWING FOR HANDRAIL	BK-GNARL-PEDCO-000-ST-DW-0006	

KEY PLAN

[illegible]