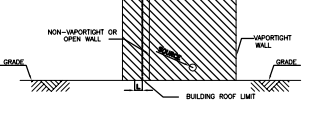
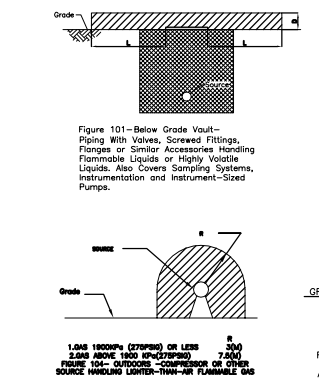


LEVEL	DISTANCE IN METERS(FEET)		
	L1	L2	D
1. LIQUID 1900 KPA (275 PSIG) OR LESS	3(10)	1(3)	6(2)
2. LIQUID ABOVE 1900 KPA (275 PSIG) (NOTE 2)	3(10)	1(3)	6(2)
3. HVL (NOTE 3)	6(20)	3(10)	6(2)

FIGURE 96-- OUTDOORS-- PIPING WITH VALVES, SCREWED FITTINGS, FLANGES OR SIMILAR ACCESSORIES HANDLING FLAMMABLE LIQUIDS OR HIGHLY VOLATILE LIQUIDS, ALSO COVERS SAMPLING SYSTEMS, INSTRUMENT AND INSTRUMENT--SIZED PUMPS (SEE SECTION 14.3.2.)



LEVEL	DISTANCE IN METERS(FEET)	
	L	R
1. GAS 1900 KPA (275 PSIG) OR LESS	3(10)	3(10)
2. GAS ABOVE 1900 KPA (275 PSIG)	7.5(25)	7.5(25)

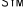



[1] THE INTERIOR OF THE VENT IS CLASSIFIED ZONE2 CROSS HATCHING HAS BEEN OMITTED FOR DRAWING CLARITY

FIGURE 105- ADEQUATELY VENTILATED BUILDING-COMPRESSOR OR OTHER SOURCE HANDLING LIGHTER-THAN-AIR FLAMMABLE GAS

TAG NO.	EQUIPMENT LIST
AE-2101 A/B/C	1ST STAGE GAS AIR COOLER
AE-2102 A/B/C	2ND STAGE GAS AIR COOLER
C-2101 A/B/C	1ST STAGE GAS COMPRESSORS
C-2102 A/B/C	2ND STAGE GAS COMPRESSORS
FST-2201	LP FLARE STACK
IG-2201	LP FLARE IGNITION PACKAGE
P-2101 A/B	SLUG PUMPS
P-2102	GLYCOL MANUAL PUMP
P-2103 A/B	GLYCOL TRANSFER PUMPS
P-2104	GLYCOL DRAIN PUMP
DELETED	
P-2201 A/B	FLARE K.O. DRUM PUMPS
P-2202 A/B	CLOSED DRAIN PUMPS
P-2203 A/B	SUMP PUMPS
P-2206	FUEL OIL PUMP
P-2209	POTABLE WATER PUMP
P-2301 A	FIRE WATER PUMP - ELECTRICAL MOTOR DRIVEN
P-2301 B	FIRE WATER PUMP - DIESEL ENGINE DRIVEN
P-2302 A/B	FIRE WATER JOCKEY PUMPS
PK-2101	GAS DEHYDRATION PACKAGE
PK-C-2203 A/B	AIR COMPRESSOR PACKAGES
PK-DR-2203A/B	AIR DRYER PACKAGE
PK-C-2204	NITROGEN COMPRESSOR PACKAGE
PK-C-2204	NITROGEN GENERATION PACKAGE
PK-2206	DIESEL GENERATOR PACKAGE
PK-2207	CORROSION INHIBITOR INJECTION PACKAGE
DELETED	
PL-3201	PIG LAUNCHER
PR-2002	GOLKHARI-3 PIG RECEIVER (BY OTHERS)
DELETED	
SU-2201	CLOSED DRAIN AND FLARE DRUM SUMP
SU-2202	ONLY WATER SUMP
DELETED	
TK-2102	LEAN GLYCOL STORAGE TANK
TK-2209	POTABLE WATER TANK
V-2101 A/B	FIRE WATER STORAGE TANKS
V-2101 A/B/C	1ST STAGE GAS SUCTION DRUM
V-2102 A/B/C	2ND STAGE GAS SUCTION DRUM
V-2103	2ND STAGE GAS DISCHARGE DRUM
V-2104	SLUG CATCHER DRUM
V-2105	INLET KNOCK OUT DRUM
DELETED	
V-2107	GLYCOL SUMP DRUM
V-2201	FLARE K.O. DRUM
V-2202	CLOSED DRAIN DRUM
V-2203	INSTRUMENT AIR RECEIVER
V-2204	NITROGEN RECEIVER
V-2205	FUEL GAS K.O. DRUM
V-2206	FUEL OIL STORAGE DRUM
DELETED	

### **NOTES**

1. ALL DIMENSION, ELEVATION AND COORDINATES ARE IN MILLIMETERS.
2. ELECTRICAL AREA CLASSIFICATION HAS BEEN CARRIED OUT IN ACCORDANCE WITH API RP 505, "RECOMMENDED PRACTICE FOR CLASSIFICATION OF LOCATIONS FOR ELECTRICAL INSTALLATIONS AT PETROLEUM FACILITIES CLASSIFIED AS CLASS 1, ZONE 0, ZONE 1 AND ZONE 2".
3. FOR ALL PACKAGES THE HAZARDOUS AREA CLASSIFICATION REQUIREMENTS SHALL BE VERIFIED AND FINALIZED AFTER RECEIVING RELEVANT VENDOR DATA.
4. ALL INSTRUMENT/ ELECTRICAL DEVICES INSTALLED IN BATTERY ROOM CONTAINING BATTERIES WITH POSSIBILITY OF H2 GAS RELEASE, SHALL BE SUITABLE FOR ZONE 1 IIC T3 AS A MINIMUM.
5. ALL INSTRUMENT/ ELECTRICAL DEVICES INSTALLED FOR ANY PIPING FITTING & CONNECTION (INCLUDE FLANGES/ VALVES/ AND ANY SCREWED CONNECTIONS) SHALL BE SUITABLE FOR ZONE 2 IIA T3 AS A MINIMUM.

LEGEND	
SYMBOL & LEGENDS	
SYMBOLS	DESCRIPTION
	ZONE 0, IIA, T3
	ZONE 1, IIA, T3
	ZONE 2, IIA, T3
	GAS GROUP AND TEMPERATURE CLASS

<b>REFERENCE DRAWING</b>	<b>DRG. No.</b>
UNIT PLOT PLAN DRAWING	BK-GCS-PEDCO-120-PI-PY-0001

---

**KEY PLAN**

---

[illegible]