



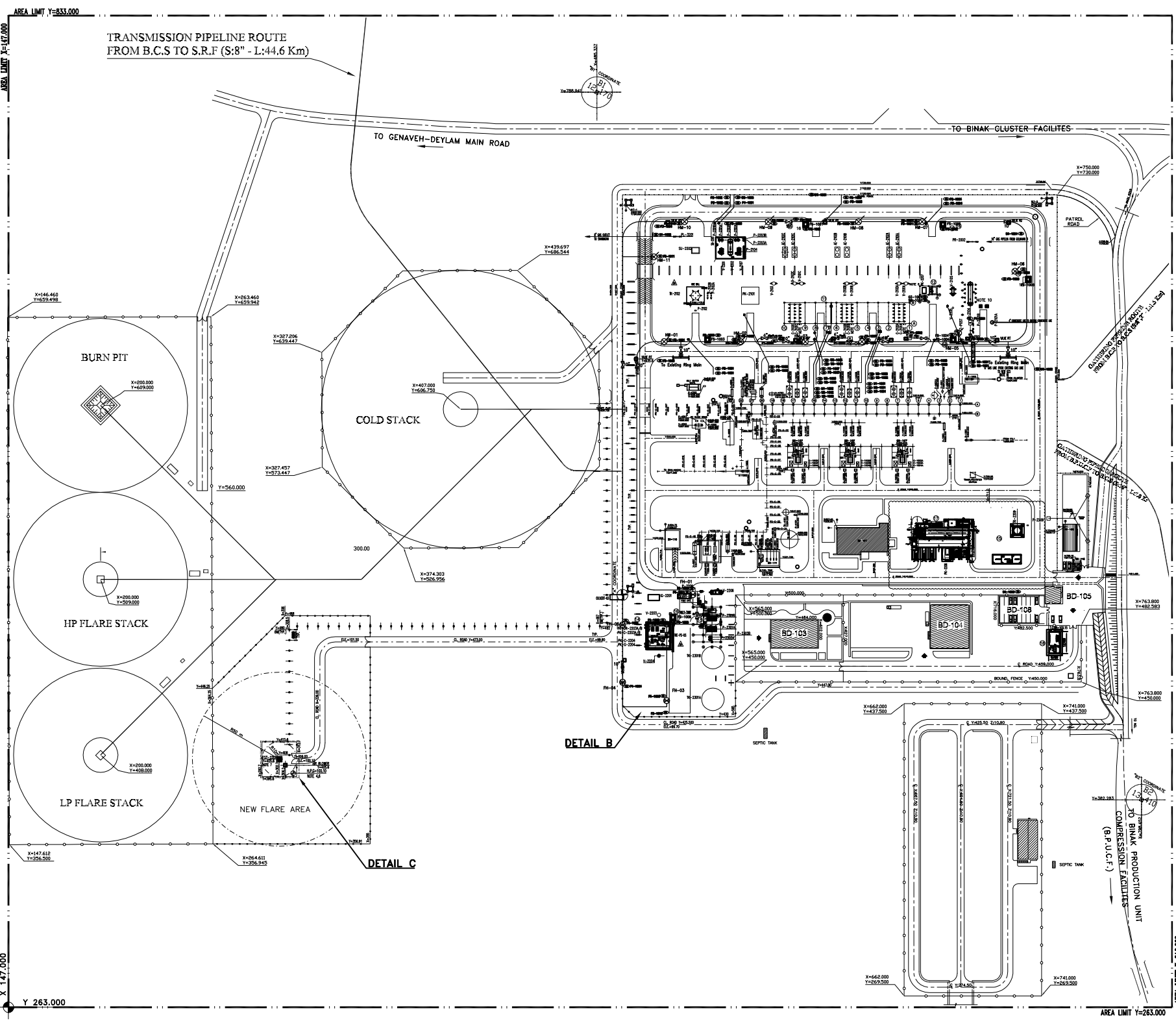
TAG NO.	BUILDING LIST
(1)	GAS COMPRESSOR SHELTER
(2)	CHEMICAL INJECTION PACKAGE & STORAGE SHELTER
(3)	FIRE WATER PUMP SHELTER
(4)	UTILITY SHELTER
(5)	STORE
(6)	FIRE SHED
(7)	EXTENSION OF EXISTING ELECTRICAL BUILDING
(8)	CCTV CONTROL ROOM

TAG NO.	EQUIPMENT LIST
AE-2101 A/B/C	1ST STAGE GAS AIR COOLER
AE-2102 A/B/C	2ND STAGE GAS AIR COOLER
C-2101 A/B/C	1ST STAGE GAS COMPRESSORS
C-2102 A/B/C	2ND STAGE GAS COMPRESSORS
FST-2201	LP FLARE STACK
IG-2201	LP FLARE IGNITION PACKAGE
P-2101 A/B	SLUG PUMPS
P-2102	GLYCOL MANUAL PUMP
P-2103 A/B	GLYCOL TRANSFER PUMPS
P-2104	GLYCOL DRAIN PUMP
DELETED	DELETED
P-2201 A/B	FLARE K.O. DRUM PUMPS
P-2202 A/B	CLOSED DRAIN PUMPS
P-2203 A/B	SUMP PUMPS
P-2206	FUEL OIL PUMP
P-2209	POTABLE WATER PUMP
P-2301 A	FIRE WATER PUMP - ELECTRICAL MOTOR DRIVEN
P-2301 B	FIRE WATER PUMP - DIESEL ENGINE DRIVEN
P-2302 A/B	FIRE WATER JOCKEY PUMPS
PK-C-2203 A/B	GAS DEHYDRATION PACKAGES
PK-C-2203A/B	AIR COMPRESSOR PACKAGES
PK-C-2204	AIR DRYER PACKAGE
PK-C-2204	NITROGEN COMPRESSOR PACKAGE
PK-C-2204	NITROGEN GENERATION PACKAGE
PK-2206	DIESEL GENERATOR PACKAGE
PK-2207	CORROSION INHIBITOR INJECTION PACKAGE
DELETED	DELETED
PL-3201	PIG LAUNCHER
PR-2002	GOLKHARI-3 PIG RECEIVER (BY OTHERS)
DELETED	DELETED
SU-2201	CLOSED DRAIN AND FLARE DRUM SUMP
SU-2202	OILY WATER SUMP
DELETED	DELETED
TK-2102	LEAN GLYCOL STORAGE TANK
TK-2209	POTABLE WATER TANK
TK-2301 A/B	FIRE WATER STORAGE TANKS
V-2101 A/B/C	1ST STAGE GAS SUCTION DRUM
V-2102 A/B/C	2ND STAGE GAS SUCTION DRUM
V-2103	2ND STAGE GAS DISCHARGE DRUM
V-2104	SLUG CATCHER DRUM
V-2105	INLET KNOCK OUT DRUM
DELETED	DELETED
V-2107	GLYCOL SUMP DRUM
V-2201	FLARE K.O. DRUM
V-2202	CLOSED DRAIN DRUM
V-2203	INSTRUMENT AIR RECEIVER
V-2204	NITROGEN RECEIVER
Y-2205	FUEL GAS K.O. DRUM
Y-2206	FUEL OIL STORAGE DRUM
DELETED	DELETED

Symbol	Description	QTY.	Symbol	Description	QTY.
Safety Equipment Sign					
(S1)	Fire Extinguisher		(W1)	High Voltage	
(S2)	Safety Shower		(W2)	Hazardous Chemical	
(S3)	Self-Contained Breathing Apparatus		(W3)	TOXIC GAS	4
(S4)	Wind Sock	3	(W4)	Speed Limit	2
(S5)	FIRST AID KIT		(W5)	Flammable Gas	5
Fire Fighting Equipment Sign					
(F1)	Deluge Valve	4	(W7)	Corrosion	
(F2)	Fire hose H2			Mandatory Sign	
(F3)	Fire Alarm Call Point	10	(M1)	Wear Ear Defenders	2
(F4)	Fire Hydrant	5	(M2)	Wear Safety Glasses	2
(F5)	Fire Hydrant/Monitor	11	(M3)	Wear Hard Hat	2
(F6)	Hose Box			Emergency Escape Sign	
(F7)	Isolation Valve		(E1)	Fire Exit	
(F8)	Fire Shed	6	(E2)	Fire Exit - Right Side	
			(E3)	Fire Exit - Left Side	
Prohibitory Sign					
(P1)	No Unauthorized Entry		(E4)	Way To Master point	
(P2)	No Smoking & Fire	8	(E5)	SCM	
(P3)	No Open Flame	8		General Sign	
(P4)	Working Drop Flat	1	(E6)	Weld Panel	
			(E7)	SOS	
			(E8)	MSDS	1

REFERENCE DRAWING	DRG. No.
ACTIVE FIRE PROTECTION AND SAFETY CONCEPT	BK-GCS-PEDCO-120-SA-DB-0001
ARCHITECTURAL DETAIL DRAWING FOR EXTENSION OF EXISTING ELCT. BUILDING	BK-GCS-PEDCO-120-AR-DW-0008
ARCHITECTURAL DETAIL DRAWING FOR CONTROL BUILDING	BK-GCS-PEDCO-120-AR-DW-0001
ACTIVE FIRE PROTECTION AND SAFETY CONCEPT	BK-SIKRL-PEDCO-110-SA-DC-0001
SPECIFICATION FOR SAFETY SIGNS	BK-GENERAL-PEDCO-000-SA-SP-0008
Fire Water Network Layout	BK-GCS-PEDCO-120-SA-PY-0001

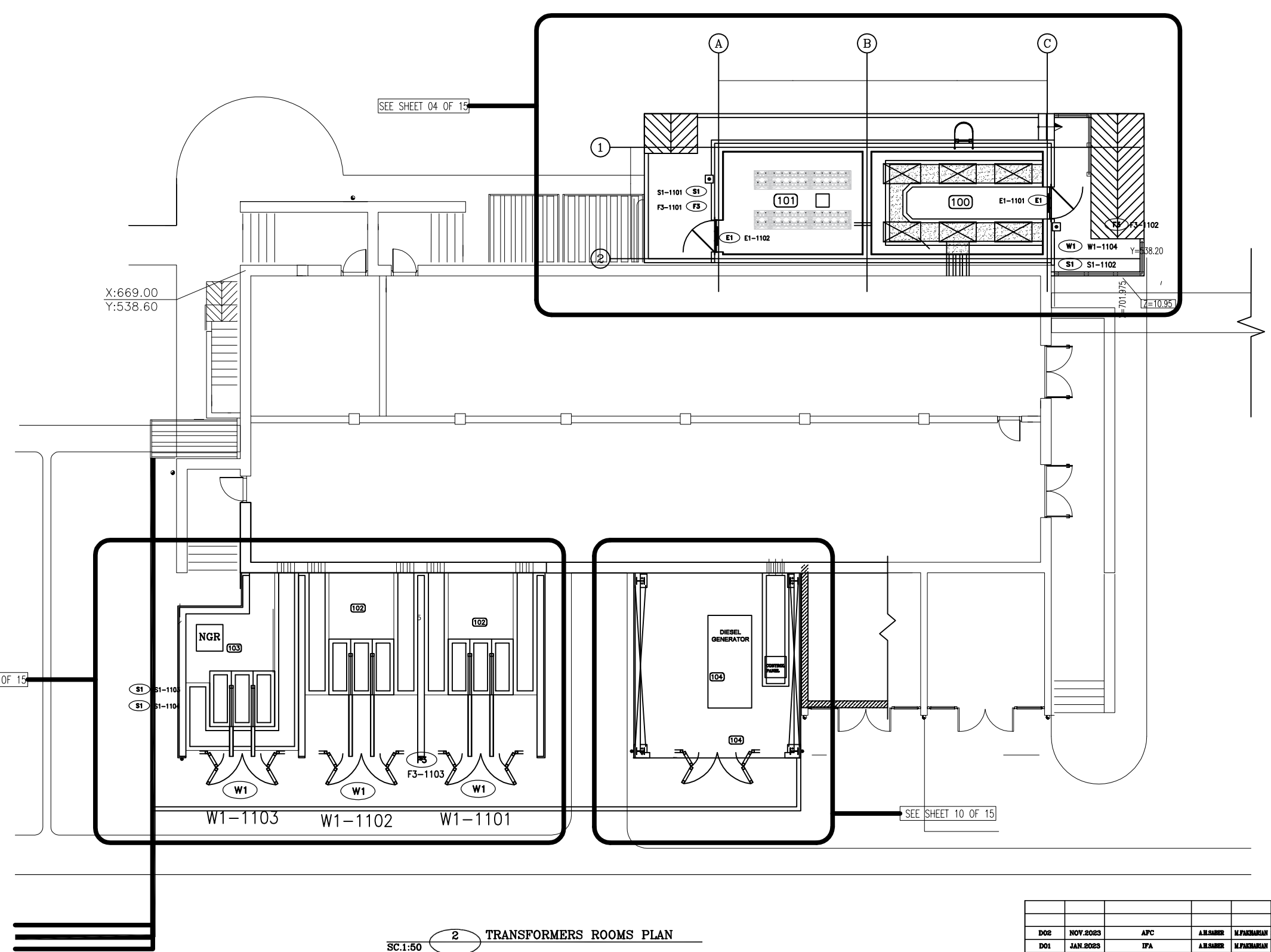
MTO FOR FIRE SHEDS	
ITEM	QTY.
2 1/2" hoses 25 meters in length,(Based on BS336)	10
Foam Container Wrench	1
pick up tube + in line inductor (450LPM)	2
Nozzles 10x (foam maker nozzle)	2
Concentrate Foam (FP 3%) containers -PVC (100 lit.)	5
Dry chemical powder wheeled extinguisher 75 kg	2
Dry chemical powder portable extinguisher 12 kg	6
CO2 wheeled extinguisher 5 kg	2
Foam Barrel Trailer	1
Portable fire water monitor(2000LPM)	1
Water nozzles with three status (fog/jet/stop)	2



LEGEND

REV.	DATE	DESCRIPTION	CHECKED	BY	DATE	REV. APPR.
D02	NOV.2023	APC	A.H.SABER	M.PAKHARIAN	M.PARMEZPOUR	** **
D01	JAN.2023	IFA	A.H.SABER	M.PAKHARIAN	M.HERSEAD	** **
D00	MAY.2022	IPC	A.H.SABER	M.PAKHARIAN	M.HERSEAD	** **

PROJECT NAME: BINAK OILFIELD DEVELOPMENT/SURFACE FACILITIES GAS COMPRESSOR STATION
 PROJECT NO.: 971020
 EPC CONTRACTOR: HIRGAN ENERGY
 EPD/EPC CONTRACTOR (GC): PETROIRAN DEVELOPMENT COMPANY
 DRAWING TITLE: ESCAPE ROUTE & SAFETY SIGN LAYOUT
 NO CONSTRUCTION PERMITTED UNLESS DRAWING APPROVED
 APPROVED FOR CONSTRUCTION BY: DATE:
 SCALE: A3 DRAWING NO. BK-GCS-PEDCO-120-SA-PY-0005 SHEET NO. 01 OF 04 REV. D02 BUDGET REF. LOCATION SIZE CLASS SERIAL NO. SHEET REVISION 058-073-9184 F 2 L 709001 01 OF 04 D02



SC.1:50 **2** TRANSFORMERS ROOMS PLAN

- SPACE TAG NUMBER
- (100) CAPACITOR BANK
 - (101) CO2 ROOM
 - (102) TRANSFORMER ROOM
 - (103) FIRE-FIGHTING PUMP TRANSFORMER ROOM
 - (104) DIESEL ROOM

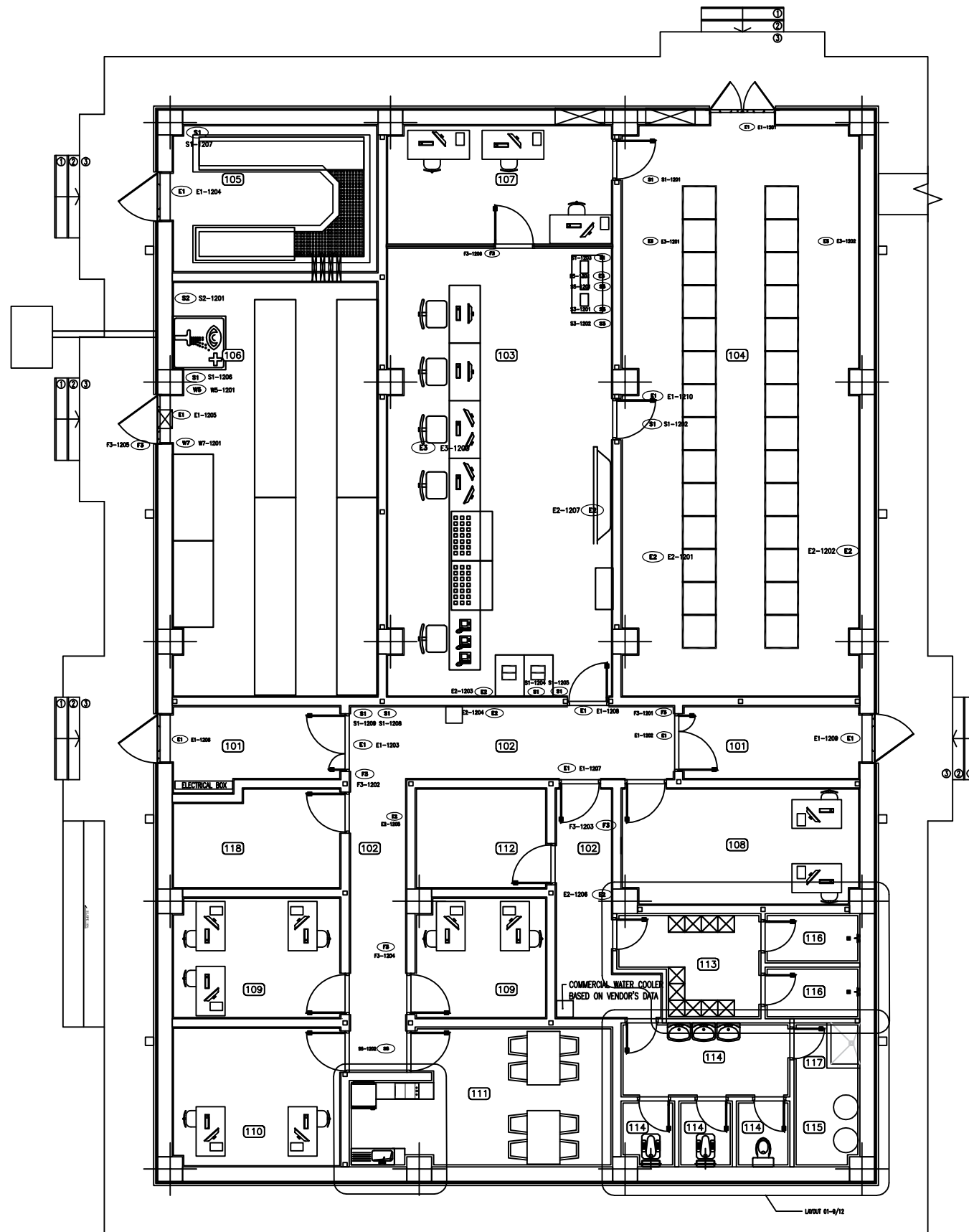
NOTES

Symbol	Description	QTY.	Symbol	Description	QTY.
Safety Equipment Sign					
(S1)	Fire Extinguisher	4	(W1)	High Voltage	3
(S2)	Safety Shower		(W2)	Hazardous Chemical	
(S3)	Self-Contained Breathing Apparatus		(W3)	TOXIC GAS	
(S4)	Wind Sock		(W4)	Speed Limit	
(S5)	FIRST AID KIT		(W5)	Flammable Gas	
Fire Fighting Equipment Sign					
(F1)	Deluge Valve		(W7)	Corrosion	
(F2)	Fire hose kit		Mandatory Sign		
(F3)	Fire Alarm Call Point	3	(W1)	Wear Ear Defenders	
(F4)	Fire Hydrant		(W2)	Wear Safety Glasses	
(F5)	Fire Hydrant/Nozzle		(W3)	Wear Hard Hat	
(F6)	Fire Hose		Emergency Escape Sign		
(F7)	Isolation Valve		(E1)	Fire Exit	2
(F8)	Fire Shed		(E2)	Fire Exit - Right Side	
Prohibitory Sign					
(P1)	No Unauthorized Entry		(E3)	Fire Exit - Left Side	
(P2)	No Smoking & Fire		(E4)	Way To Muster point	
(P3)	No Open Flame		(E5)	SCBA	
(P4)	Working Drop Fall		General Sign		
			(G1)	Tiled Panel	
			(G2)	SDS	
			(G3)	MSSC	

REFERENCE DRAWING	DRG. No.
ACTIVE FIRE PROTECTION AND SAFETY CONCEPT	BK-GCS-PEDCO-120-SA-DB-0001
ARCHITECTURAL DETAIL DRAWING FOR EXTENSION OF EXISTING ELECT. BUILDING	BK-GCS-PEDCO-120-AR-DW-0002
ARCHITECTURAL DETAIL DRAWING FOR CONTROL BUILDING	BK-GCS-PEDCO-120-AR-DW-0001
ACTIVE FIRE PROTECTION AND SAFETY CONCEPT	BK-SNGR-PEDCO-110-SA-DC-0001
SPECIFICATION FOR SAFETY SIGNS	BK-GENERAL-PEDCO-000-SA-SP-0006

LEGEND

REV.	DATE	DESCRIPTION	CHECKED	DATE	BY	DATE	BY	DATE		
DO2	NOV.2023	APC	A.H.SABER	M.PACHAMAN	M.PACHAMANPOUR	**..	***	*****		
DO1	JAN.2023	IFA	A.H.SABER	M.PACHAMAN	M.HERSEAD	**..	BY	DATE		
DO0	MAY.2022	IPC	A.H.SABER	M.PACHAMAN	M.HERSEAD	**..	CHECKED	REV. APPR.		
REV.	DATE	P.O.I.S	PREP.	CHK.	APP.	AUT.	<p>امثل و کلیه نسخ این نقشه و جزئیات متعلق به شرکت ملی مناطق نفت خیز جنوب میباشد. THE ORIGINAL AND ALL COPIES OF THIS DRAWING TOGETHER WITH THE COPYRIGHT THEREIN ARE THE SOLE PROPERTY OF N.I.S.O.C./ FIELDS</p>			
PROJECT NAME:		BINAK OILFIELD DEVELOPMENT/SURFACE FACILITIES GAS COMPRESSOR STATION								
PROJECT NO.:		971020								
EPC CONTRACTOR:										
DRAWING TITLE:		ESCAPE ROUTE & SAFETY SIGN LAYOUT								
APPROVED FOR CONSTRUCTION		BY:					DATE:			
SCALE	SIZE	DRAWING NO.	SHEET NO.	REV.	BUDGET REF.	LOCATION	SIZE CLASS	SERIAL NO.	SHEET	REVISION
*****	A3	BK-GCS-PEDCO-120-SA-PY-0005	02 OF 04	DO2	D58-073-9184	F	2	L	709001	02 OF 04



SC.1:50 CONTROL BUILDING FURNITURE & FLOORING PLAN

TAG NAME	NET AREA
101 AIR LOCK	16 sq.m
102 CORRIDOR	33 sq.m
103 CONTROL ROOM	59 sq.m
104 AUXILIARY ROOM	80 sq.m
105 UPS ROOM	18 sq.m
106 BATTERY ROOM	50 sq.m
107 MANAGEMENT	16 sq.m
108 INSTRUMENT ROOM	21 sq.m
109 OFFICE	26 sq.m
110 IN-CHARGE + ARCHIVE	14 sq.m
111 PANTRY + DINING ROOM	20 sq.m
112 PRAYER ROOM	8 sq.m
113 LOCKER	8 sq.m
114 WC	13 sq.m
115 BOILERS	4 sq.m
116 BATHROOM	6 sq.m
117 JANITOR CLOSET	2 sq.m
118 HVAC CONTROL ROOM	9 sq.m

NOTES

Symbol	Description	QTY.	Symbol	Description	QTY.
Safety Equipment Sign					
(S1)	Fire Extinguisher	9	(W1)	High Voltage	
(S2)	Safety Shower	1	(W2)	Hazardous Chemical	
(S3)	Self-Contained Breathing Apparatus	2	(W3)	TOXIC GAS	
(S4)	Wind Sock		(W4)	Speed Limit	
(S5)	FIRST AID KIT	2	(W5)	Flammable Gas	1
Fire Fighting Equipment Sign					
(F1)	Deluge Valve		(W7)	Corrosion	1
(F2)	Fire hose kit			Mandatory Sign	
(F3)	Fire Alarm Call Point	6	(M1)	Wear Ear Defenders	
(F4)	Fire Hydrant		(M2)	Wear Safety Glasses	
(F5)	Fire Hydrant/Manitor		(M3)	Wear Hard Hat	
(F6)	Hose Box		Emergency Escape Sign		
(F7)	Isolation Valve		(E1)	Fire Exit	10
(F8)	Fire Shed		(E2)	Fire Exit - Right Side	7
Prohibitory Sign					
(P1)	No Unauthorized Entry		(E3)	Fire Exit - Left Side	3
(P2)	No Smoking & Fire		(E4)	Way To Master point	
(P3)	No Open Flame		(E5)	SCM	1
(P4)	Warning Drop Fall		(G1)		
			(G2)	SDS	
			(G3)	MSDS	

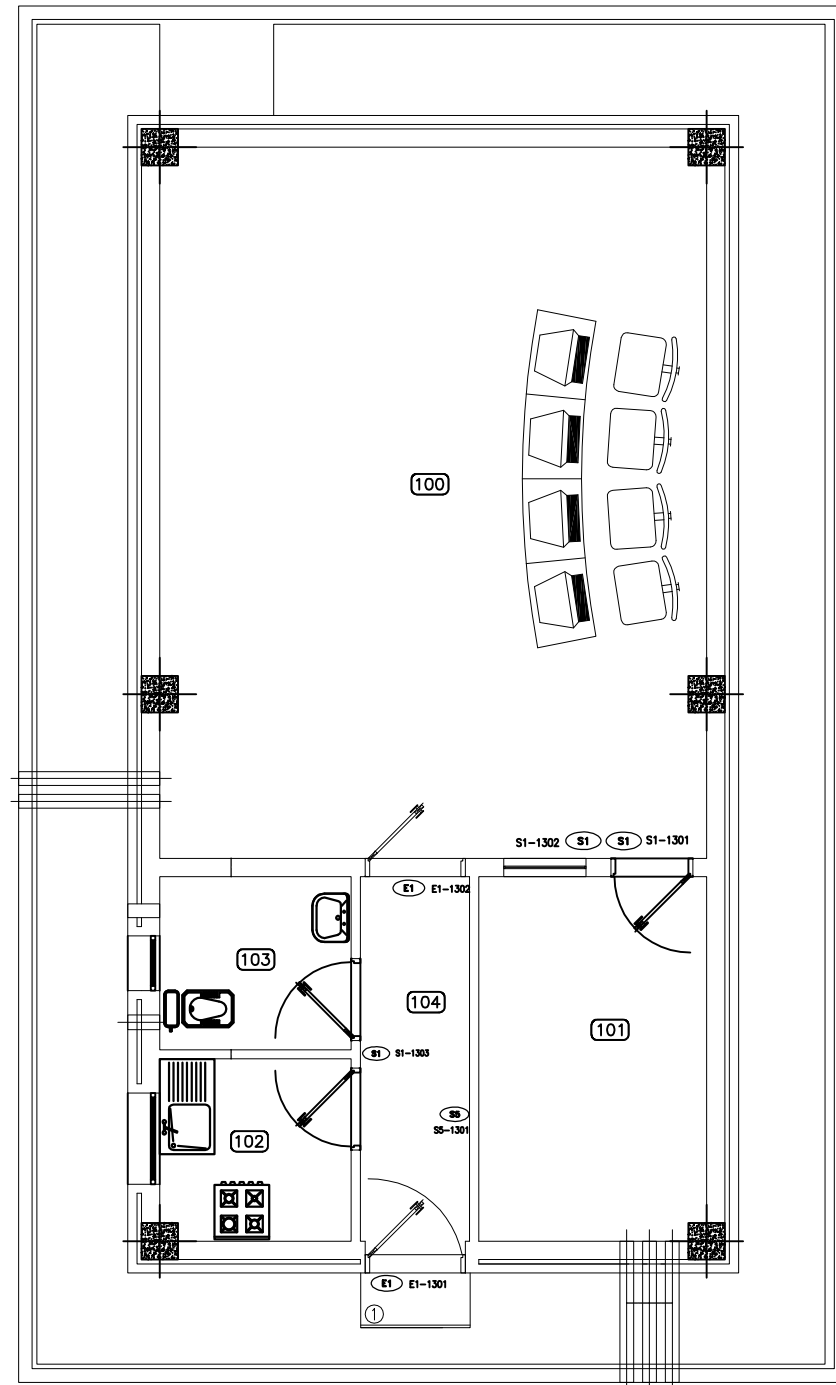
REFERENCE DRAWING	DRG. No.
ACTIVE FIRE PROTECTION AND SAFETY CONCEPT	BK-GCS-PEDCO-120-SA-DB-0001
ARCHITECTURAL DETAIL DRAWING FOR EXTENSION OF EXISTING ELECT. BUILDING	BK-GCS-PEDCO-120-AR-DW-0008
ARCHITECTURAL DETAIL DRAWING FOR CONTROL BUILDING	BK-GCS-PEDCO-120-AR-DW-0001
ACTIVE FIRE PROTECTION AND SAFETY CONCEPT	BK-SHRL-PEDCO-110-SA-DC-0001
SPECIFICATION FOR SAFETY SIGNS	BK-GENERAL-PEDCO-400-SA-SP-0006

LEGEND

REV.	DATE	P.O.I.S	PREP.	CHK.	APP.	AUT.	DESCRIPTION	CHECKED	REV. APPR.
DO2	NOV.2023	APC	A.H.SABER	M.PACHARIAN	M.PARMEPOUR	**..			
DO1	JAN.2023	IFA	A.H.SABER	M.PACHARIAN	M.MERSEAD	**..			
DO0	MAY.2022	IPC	A.H.SABER	M.PACHARIAN	M.MERSEAD	**..			

PROJECT NAME: BINAK OILFIELD DEVELOPMENT/SURFACE FACILITIES GAS COMPRESSOR STATION
 PROJECT NO.: 971020
 EPC CONTRACTOR: HIRGAN ENERGY - DESIGN & INSPECTION COMPANIES
 EPD/EPC CONTRACTOR (GC): PETROIRAN DEVELOPMENT COMPANY
 BINAK OILFIELD DEVELOPMENT SURFACE FACILITIES GAS COMPRESSOR STATION
 DATE: SCALE: DRAWING BY: CHECKED BY: PROJECT ENG.
 DRAWING TITLE: ESCAPE ROUTE & SAFETY SIGN LAYOUT
 NO CONSTRUCTION PERMITTED UNLESS DRAWING APPROVED
 APPROVED FOR CONSTRUCTION BY: DATE:

SCALE	SIZE	DRAWING NO.	SHEET NO.	REV.	BUDGET REF.	LOCATION	SIZE	CLASS	SERIAL NO.	SHEET	REVISION
*****	A3	BK-GCS-PEDCO-120-SA-PY-0005	03 OF 04	DO2	D53-073-9184	F	2	L	709001	03 OF 04	DO2



SC.1:50 1 CCTV-CONTROL ROOM

SPACE TAG NUMBER

- 100 CONTROL ROOM
- 101 RACK ROOM
- 102 PANTRY
- 103 WC
- 104 ENTRANCE

NOTES

Symbol	Description	QTY.	Symbol	Description	QTY.
Safety Equipment Sign			Warning Sign		
(S1)	Fire Extinguisher	3	(W1)	High Voltage	
(S2)	Safety Shower		(W2)	Hazardous Chemical	
(S3)	Self-Contained Breathing Apparatus		(W3)	TOxic GAS	
(S4)	Wind Sock		(W4)	Speed Limit	
(S5)	FIRST AID KIT	1	(W5)	Flammable Gas	
Fire Fighting Equipment Sign			Hazard Diamond		
(F1)	Deluge Valve		(W6)	Hazard Diamond	
(F2)	Fire main VR		(W7)	Caution	
Mandatory Sign			Prohibitory Sign		
(M1)	Wear Ear Defenders		(P1)	No Unauthorized Entry	
(M2)	Wear Safety Glasses		(P2)	No Smoking & Fire	
(M3)	Wear Hard Hat		(P3)	No Open Flame	
Emergency Escape Sign			General Sign		
(E1)	Fire Exit - Right Side	2	(G1)	Tiled Panel	
(E2)	Fire Exit - Left Side		(G2)	SOS	
(E3)	Fire Exit - Right Side		(G3)	MSDS	
(E4)	Way To Muster point				
(E5)	Way To Muster point				

REFERENCE DRAWING	DRG. No.
ACTIVE FIRE PROTECTION AND SAFETY CONCEPT	BK-GCS-PEDCO-120-SA-DB-0001
ARCHITECTURAL DETAIL DRAWING FOR EXTENSION OF EXISTING ELECT. BUILDING	BK-GCS-PEDCO-120-AB-DW-0002
ARCHITECTURAL DETAIL DRAWING FOR CONTROL BUILDING	BK-GCS-PEDCO-120-AB-DW-0001
ACTIVE FIRE PROTECTION AND SAFETY CONCEPT	BK-SHGR-PEDCO-110-SA-DC-0001
SPECIFICATION FOR SAFETY SIGNS	BK-GENERAL-PEDCO-000-SA-SP-0006

LEGEND

REV.	DATE	P.O.I.S	PREP.	CHK.	APP.	AUT.	DESCRIPTION	CHECKED	REV. APPR.
DO2	NOV.2023	APC	A.H.SABER	M.PANJAHAN	M.PANJAHAN	M.PANJAHAN	***	*****	***
DO1	JAN.2023	IFA	A.H.SABER	M.PANJAHAN	M.HESSEAD	M.HESSEAD	***	*****	***
DO0	MAY.2022	IPC	A.H.SABER	M.PANJAHAN	M.HESSEAD	M.HESSEAD	***	*****	***

امثل و کلیه نسخ این نقشه و حق انحصاری منافع به شرکت ملی صنایع پتروشیمی جنوب میبایند.
 THE ORIGINAL AND ALL COPIES OF THIS DRAWING TOGETHER WITH THE COPYRIGHT THEREIN ARE THE SOLE PROPERTY OF N.I.S.O.C./ FIELDS

PROJECT NAME: BINAK OILFIELD DEVELOPMENT/SURFACE FACILITIES GAS COMPRESSOR STATION

PROJECT NO.: 971020

EPC CONTRACTOR: HIRGAN ENERGY - DESIGN & INSPECTION COMPANIES

EPD/EPC CONTRACTOR (GC): PETROIRAN DEVELOPMENT COMPANY

BINAK OILFIELD DEVELOPMENT SURFACE FACILITIES GAS COMPRESSOR STATION

DATE: SCALE: DRAWING BY: CHECKED BY: PROJECT ENG.

DRAWING TITLE: ESCAPE ROUTE & SAFETY SIGN LAYOUT

NO CONSTRUCTION PERMITTED UNLESS DRAWING APPROVED

APPROVED FOR CONSTRUCTION BY: DATE:

SCALE	SIZE	DRAWING NO.	SHEET NO.	REV.	BUDGET REF.	LOCATION	SIZE	CLASS	SERIAL NO.	SHEET	REVISION
*****	A3	BK-GCS-PEDCO-120-SA-PY-0005	04 OF 04	DO2	D58-073-9184	F	2	L	709001	04 OF 04	DO2