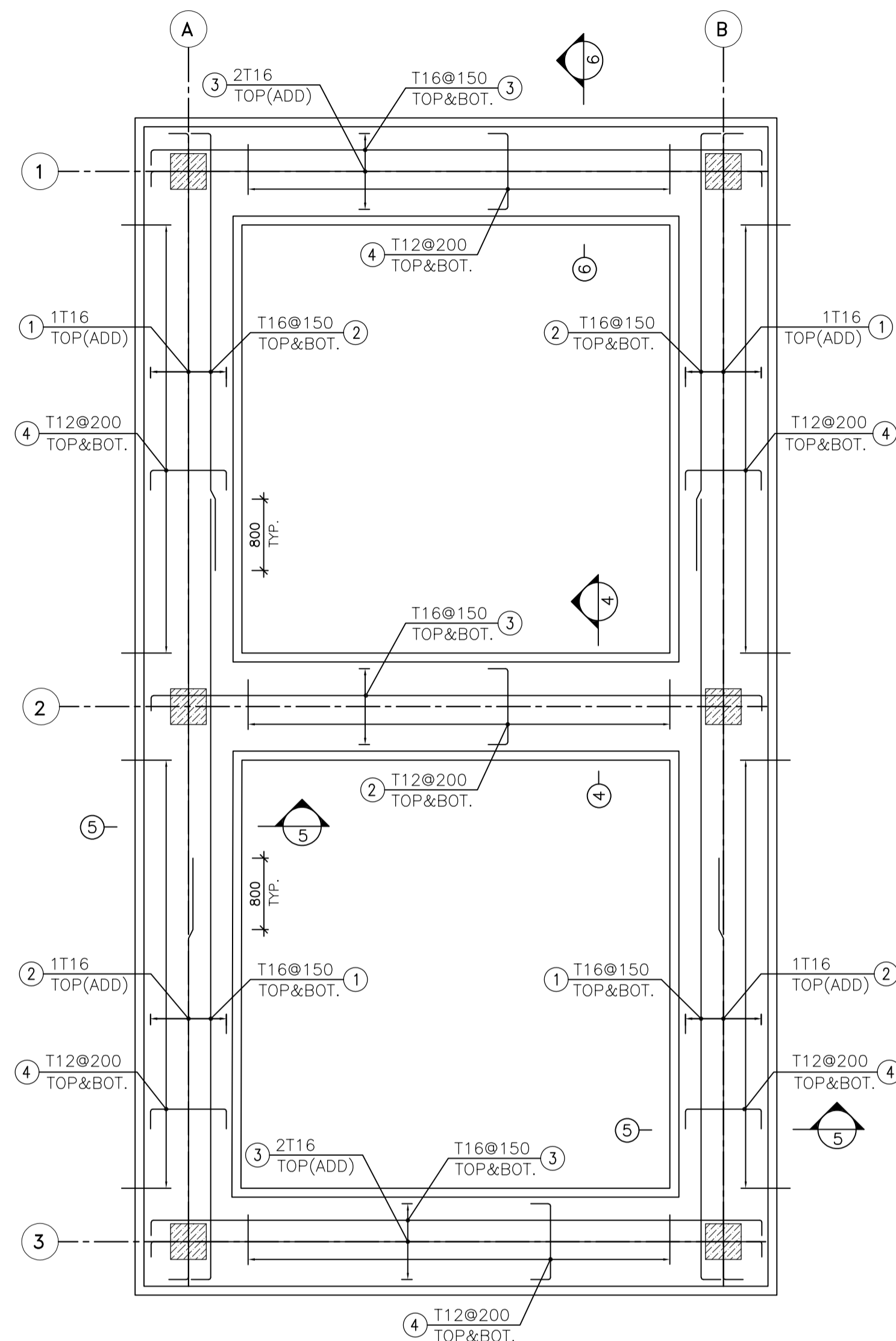
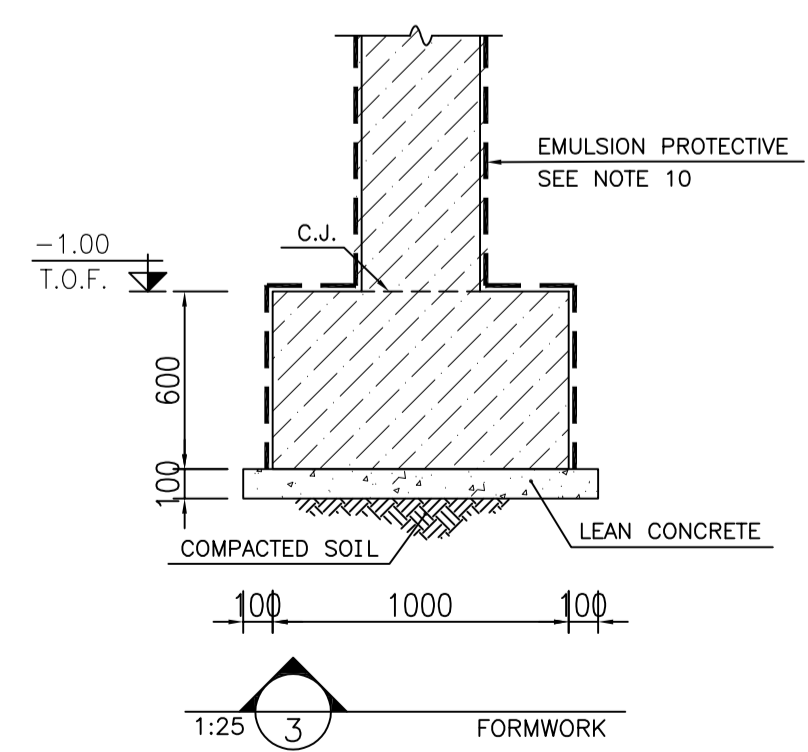


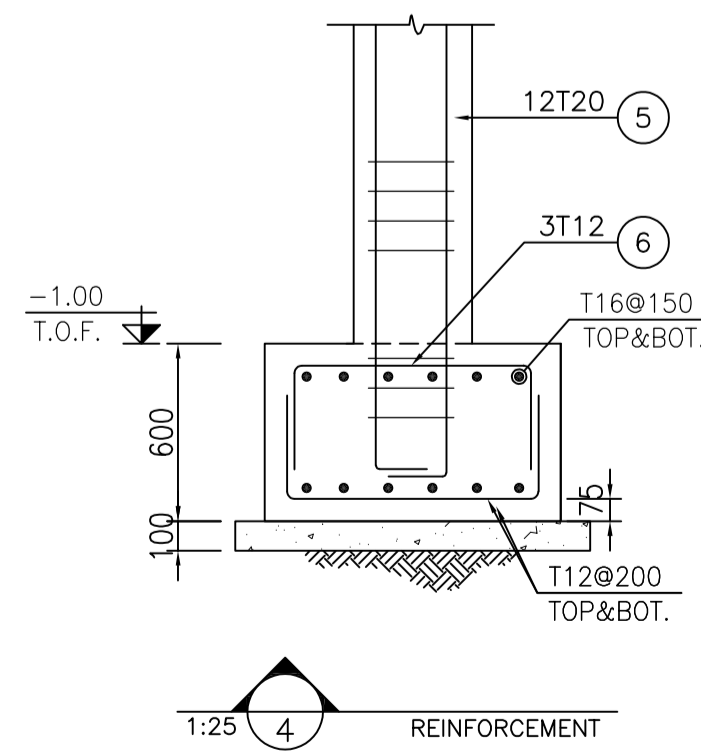
1:50 FOUNDATION FORMWORK PLAN



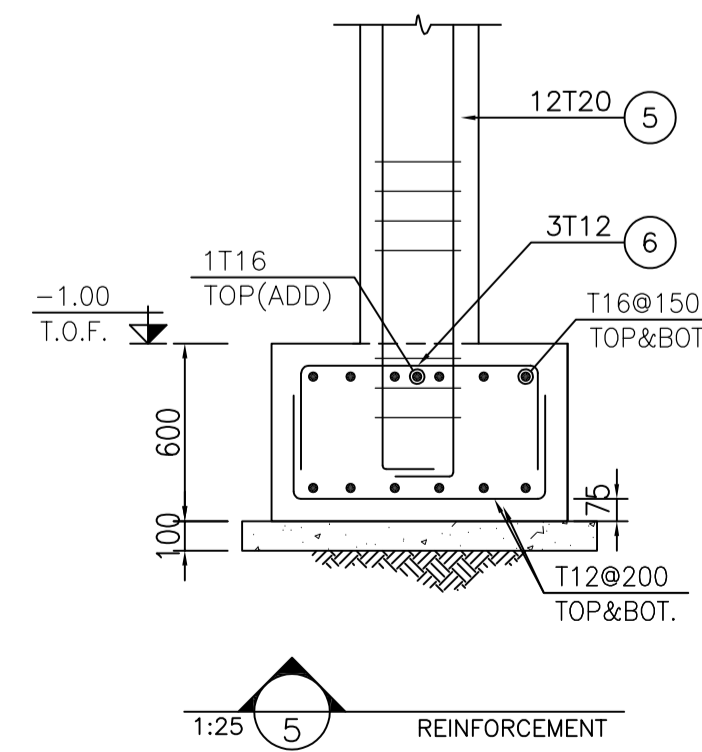
1:50 FOUNDATION REINFORCEMENT PLAN



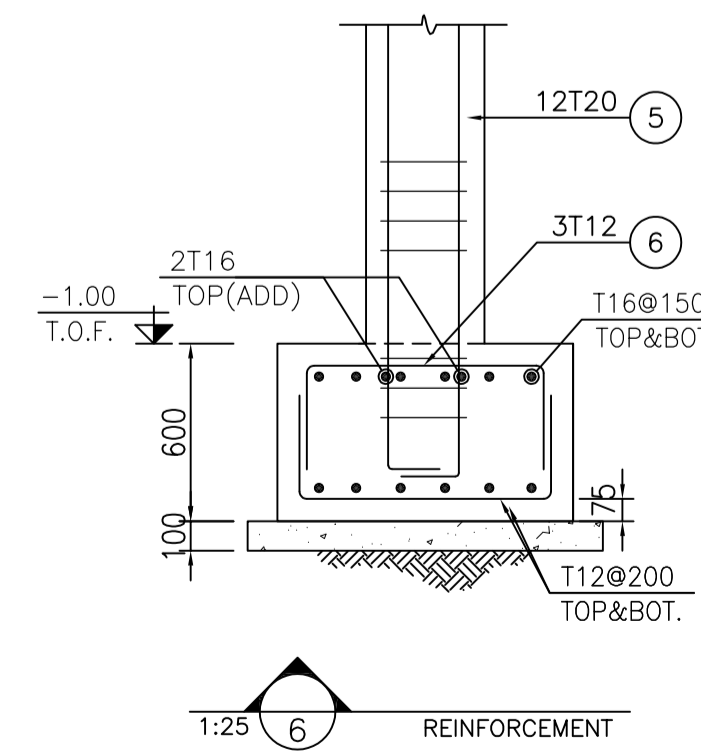
1:25 FORMWORK



1:25 REINFORCEMENT



1:25 REINFORCEMENT



1:25 REINFORCEMENT

BAR BENDING SCHEDULE-Foundation							
Pos	Spec.	Shape	L	No.	T12	T16	T20
1	T16	250 8750	9.00	26		234.0	
2	T16	250 4900	5.15	26		133.9	
3	T16	250 6850 1250	7.35	40		294.0	
4	T12	300 1350 300	1.95	76	148.2		
5	T20	350 3150	3.50	72			252.0
6	T12	300 300 100	1.40	350	490.0		
TOTAL LENGTH (m)					638.2	661.9	252.0
UNIT WEIGHT (Kg/m)					0.888	1.578	2.466
WEIGHT (Kg)					566.8	1044.5	621.5
TOTAL WEIGHT (Kg)					2240 Kg.		

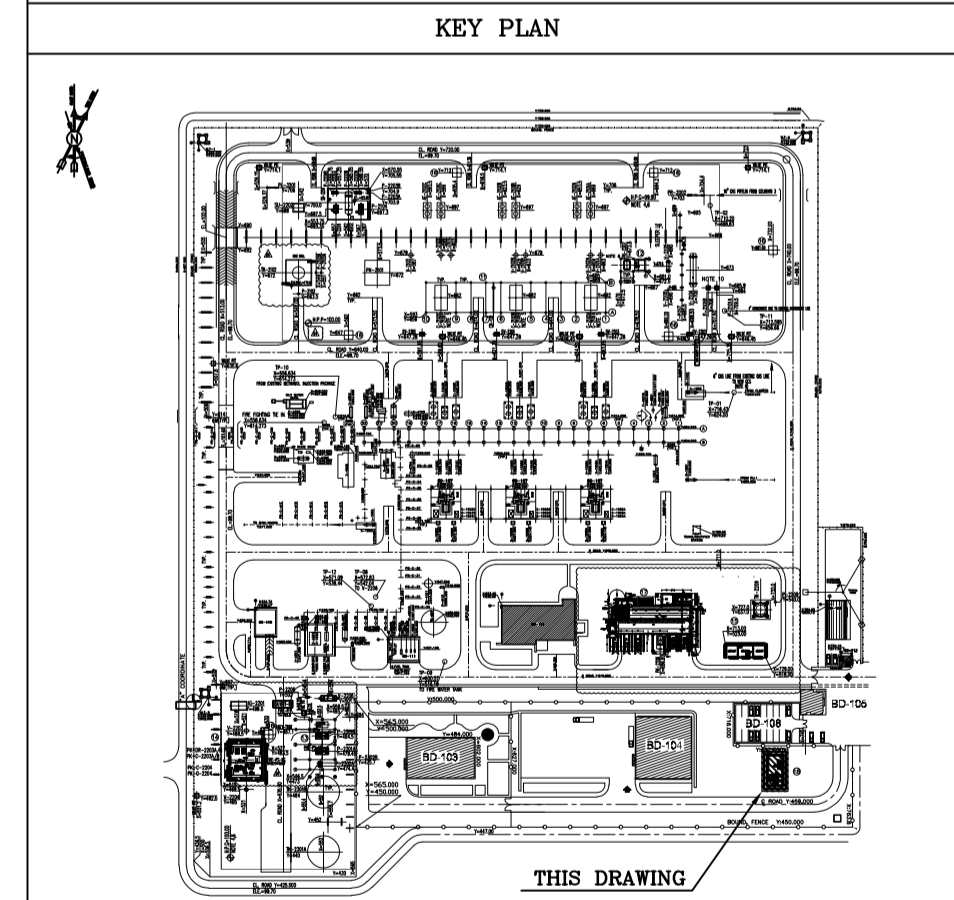
- NOTES**
- 1) ALL ELEVATIONS AND COORDINATES ARE IN "m" AND DIMENSIONS ARE IN "mm" UNLESS OTHERWISE NOTED.
 - 2) ALL DIMENSIONS AND ELEVATIONS SHALL BE CHECKED BY THE CONTRACTOR PRIOR TO CONSTRUCTION.
 - 3) ACCORDING TO THE SPECIFICATION OF CONCRETE WORKS: "BK-GNRL-PEDCO-000-ST-SP-0001" 28 DAYS CHARACTERISTIC COMPRESSIVE STRENGTH OF MAIN CONCRETE IS 30 MPa
 - 4) ACCORDING TO THE SPECIFICATION OF CONCRETE WORKS: "BK-GNRL-PEDCO-000-ST-SP-0001" 28 DAYS CHARACTERISTIC COMPRESSIVE STRENGTH OF LEAN CONCRETE IS 15 MPa
 - 5) REINFORCING BARS SHALL BE S400 ACCORDING TO: ISIRI3132 AND INBC9 WITH MINIMUM TENSILE YIELD STRENGTH 400 N/mm²
 - 6) CONCRETE COVER OVER BARS SHALL BE 75mm FOR FOUNDATION AND 50mm FOR BEAMS & COLUMNS.
 - 7) UNDERGROUND CONCRETE SHALL BE PROTECTED AND COATED ACCORDING TO RELEVANT SPECIFICATION.
 - 8) CEMENT TYPE 2 SHALL BE USED ACCORDING TO GEOTECHNICAL REPORT SUGGESTION.
 - 9) FILL MATERIAL SHALL BE COMPACTED TO NOT LESS THAN 95% OF THE MAXIMUM DENSITY AS DETERMINED BY ASTM D-1557 (MODIFIED PROCTOR) METHOD.
 - 10) THE EMULSION SHOULD BE USED ON CONCRETE EXPOSED WITH SOIL. B-90-COAT.M.E IS A BITUMEN-BASED ONE-COMPONENT EMULSION PROTECTIVE COATING TO PREVENT THE PENETRATION OF DESTRUCTIVE SALTS & IONS. THIS MATERIAL IS CONTROLLED ACCORDING TO THE FOLLOWING STANDARDS: ASTM D1227, ASTM D2939, ASTM D1640

±0.00 = HOLD (F.G.L)MSL

LEGEND

	REINFORCED CONCRETE	F.G.L. : FINISH GROUND LEVEL
	LEAN CONCRETE	T.O.F. : TOP OF FOUNDATION
	GROUND	C.J. : CONSTRUCTION JOINT
		F.G.L. : FINISH GROUND LEVEL

REFERENCE DRAWING	DRG. No.
ARCHITECTURAL DRAWING FOR CCTV CONTROL ROOM BINAK GCS	BK-GCS-PEDCO-120-AR-DW-0008
STRUCTURAL DRAWING FOR CCTV CONTROL ROOM BINAK GCS	BK-GCS-PEDCO-120-AR-DW-0076
GENERAL NOTES-REINFORCED CONCRETE STRUCTURES	BK-GNRL-PEDCO-000-ST-DW-0012
STANDARD DRAWING FOR INSERT PLATES IN CONCRETE	BK-GNRL-PEDCO-000-ST-DW-0007
UNIT PLOT PLAN DRAWING	BK-GCS-PEDCO-120-PI-PY-0001



REV.	DATE	P.O.I.S	PREP.	CHK.	APP.	AUT.	DESCRIPTION	BY	DATE	BY	DATE
D02	FEB.2024	AFD	R.BERLOUË	M.PAKHARIAN	S.FARAMARZPOUR	***					
D01	JAN.2024	IFA	R.BERLOUË	M.PAKHARIAN	S.FARAMARZPOUR	**					
D00	SEP.2023	IFC	R.BERLOUË	M.PAKHARIAN	S.FARAMARZPOUR	***					

PROJECT NAME: BINAK OILFIELD DEVELOPMENT/SURFACE FACILITIES GAS COMPRESSOR STATION

PROJECT NO.: 971020

EPC CONTRACTOR: HIRGAN ENERGY COMPANIES

EPD/EPC CONTRACTOR (GC): PETROIRAN DEVELOPMENT COMPANY

DRAWING TITLE: FOUNDATION DRAWING FOR CCTV CONTROL ROOM - BINAK GCS

NO CONSTRUCTION PERMITTED UNLESS DRAWING APPROVED

SCALE	SIZE	DRAWING NO.	SHEET NO.	REV.	BUDGET REF.	LOCATION	SIZE	CLASS	SERIAL NO.	SHEET	REVISION
AS SHOWN	A1	BK-GCS-PEDCO-120-ST-DW-0075	1 OF 1	D02	053-073-9184	F	4	Q	709402	1	D02