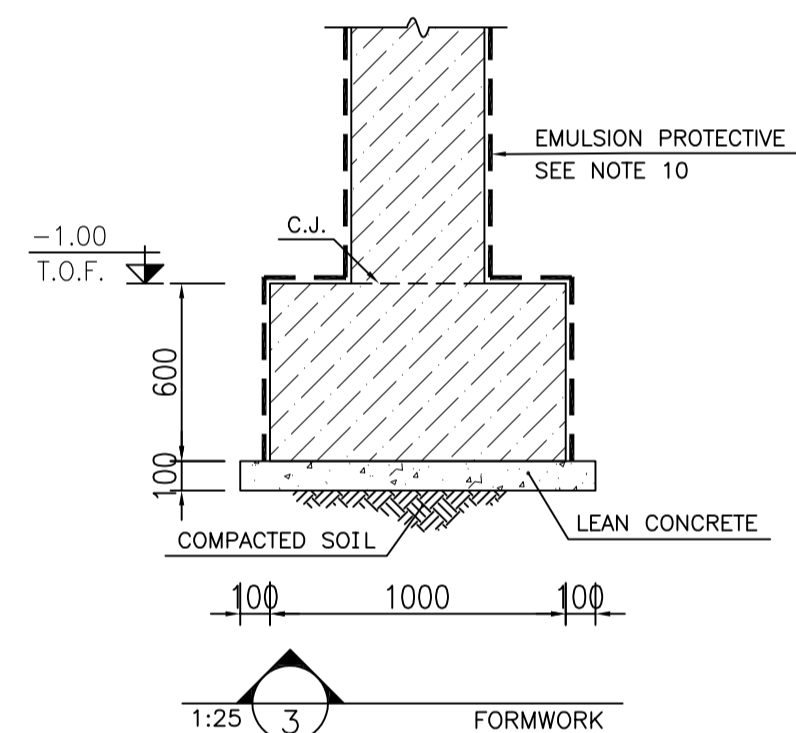
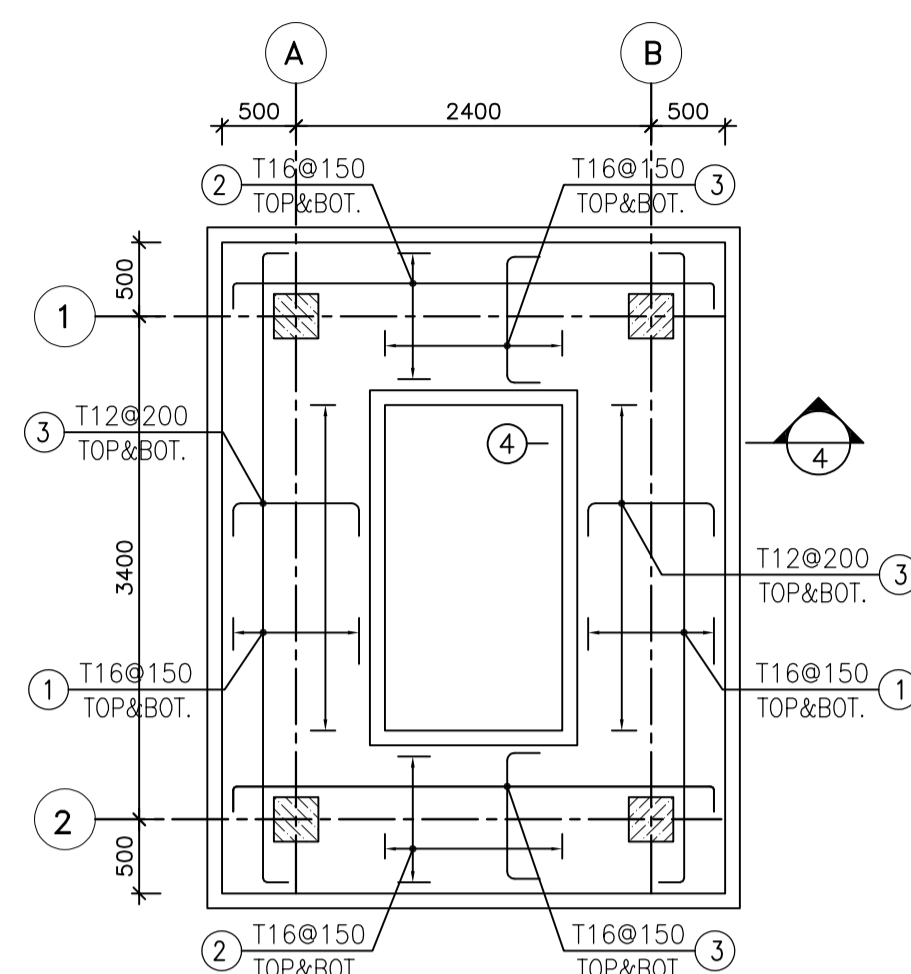


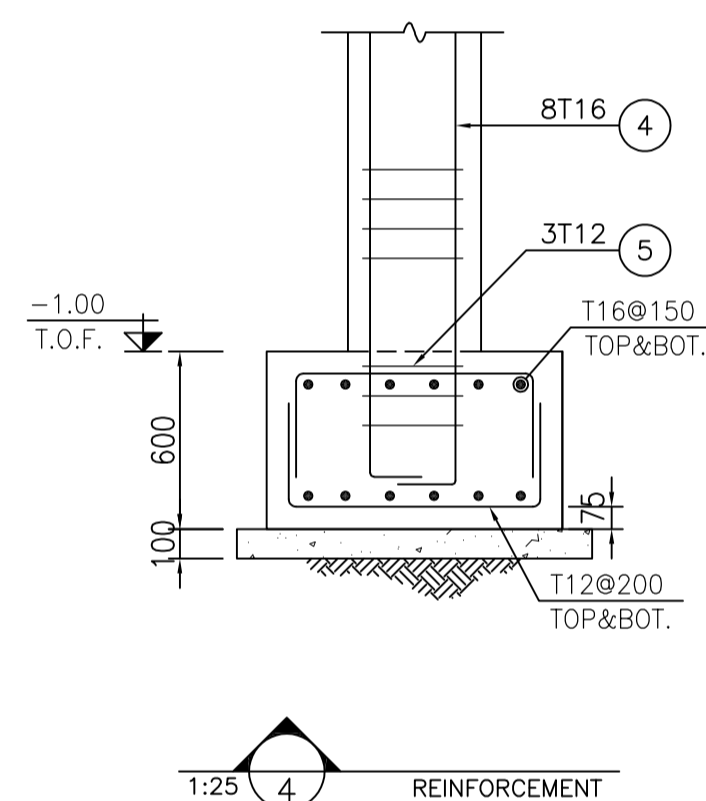
FOUNDATION FORMWORK PLAN  
1:50



FORMWORK  
1:25



FOUNDATION REINFORCEMENT PLAN  
1:50



REINFORCEMENT  
1:25

BAR BENDING SCHEDULE-Foundation						
Pos	Spec.	Shape	L	No.	T12	T16
1	T16	250(4250)250	4.75	24		114.0
2	T16	250(3250)250	3.75	24		90.0
3	T12	300(1350)300	1.95	76	148.2	
4	T16	250(2950)	3.20	32		102.4
5	T12	200(200)100	1.00	12	12.0	
TOTAL LENGTH (m)					160.2	306.4
UNIT WEIGHT (Kg/m)					0.888	1.578
WEIGHT (Kg)					142.3	483.5
TOTAL WEIGHT (Kg)					630 Kg.	

NOTES

- ALL ELEVATIONS AND COORDINATES ARE IN "m" AND DIMENSIONS ARE IN "mm" UNLESS OTHERWISE NOTED.
- ALL DIMENSIONS AND ELEVATIONS SHALL BE CHECKED BY THE CONTRACTOR PRIOR TO CONSTRUCTION.
- ACCORDING TO THE SPECIFICATION OF CONCRETE WORKS: "BK-GNRL-PEDCO-000-ST-SP-0001", 28 DAYS CHARACTERISTIC COMPRESSIVE STRENGTH OF MAIN CONCRETE IS 30 MPa
- ACCORDING TO THE SPECIFICATION OF CONCRETE WORKS: "BK-GNRL-PEDCO-000-ST-SP-0001", 28 DAYS CHARACTERISTIC COMPRESSIVE STRENGTH OF LEAN CONCRETE IS 15 MPa
- REINFORCING BARS SHALL BE S400 ACCORDING TO: ISRI3132 AND INBC9 WITH MINIMUM TENSILE YIELD STRENGTH 400 N/mm<sup>2</sup>
- CONCRETE COVER OVER BARS SHALL BE 75mm FOR FOUNDATION AND 50mm FOR BEAMS & COLUMNS.
- UNDERGROUND CONCRETE SHALL BE PROTECTED AND COATED ACCORDING TO RELEVANT SPECIFICATION.
- CEMENT TYPE 2 SHALL BE USED ACCORDING TO GEOTECHNICAL REPORT SUGGESTION.
- FILL MATERIAL SHALL BE COMPACTED TO NOT LESS THAN 95% OF THE MAXIMUM DENSITY AS DETERMINED BY ASTM D-1557 (MODIFIED PROCTOR) METHOD.
- THE EMULSION SHOULD BE USED ON CONCRETE EXPOSED WITH SOIL. B-90-COAT.M.E IS A BITUMEN-BASED ONE-COMPONENT EMULSION PROTECTIVE COATING TO PREVENT THE PENETRATION OF DESTRUCTIVE SALTS & IONS. THIS MATERIAL IS CONTROLLED ACCORDING TO THE FOLLOWING STANDARDS: ASTM D1227, ASTM D2939, ASTM D1640

±0.00 = +262.00(F.G.L)MSL

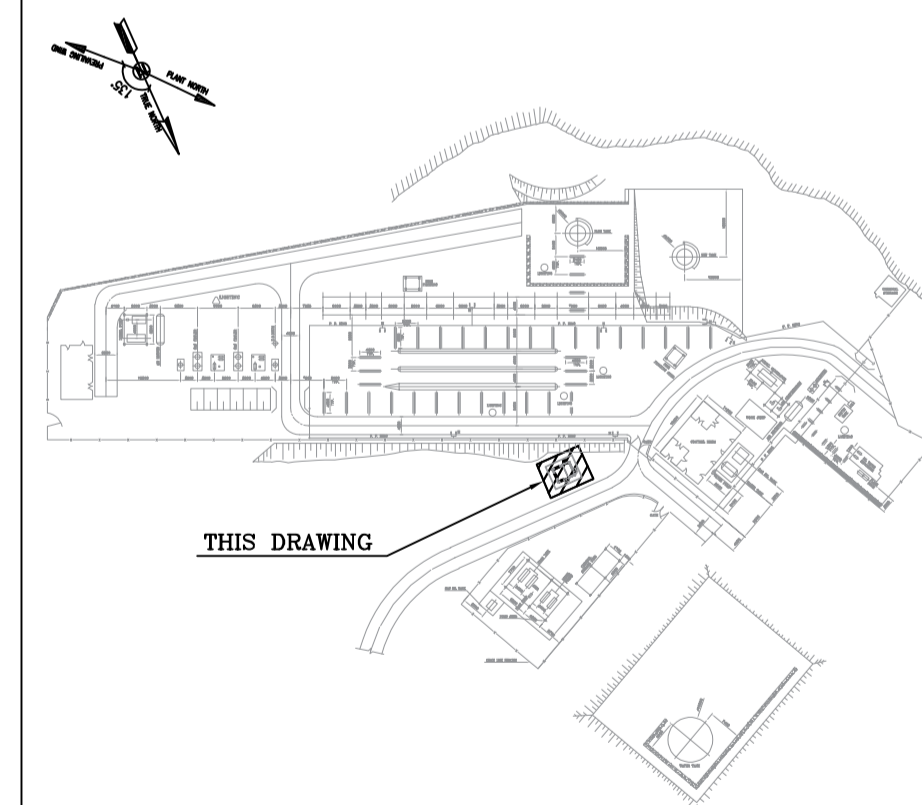
LEGEND

	REINFORCED CONCRETE	F.G.L. : FINISH GROUND LEVEL
	LEAN CONCRETE	T.O.F. : TOP OF FOUNDATION
	GROUND	C.J. : CONSTRUCTION JOINT

REFERENCE DRAWING

REFERENCE DRAWING	DRG. No.
ARCHITECTURAL DRAWING FOR CCTV RACK ROOM-BINAK PU	BK-GCS-PEDCO-120-AR-DW-0010
STRUCTURAL DRAWING FOR CCTV RACK ROOM-BINAK PU	BK-GCS-PEDCO-120-ST-DW-0080
GENERAL NOTES-REINFORCED CONCRETE STRUCTURES	BK-GNRL-PEDCO-000-ST-DW-0012
STANDARD DRAWING FOR INSERT PLATES IN CONCRETE	BK-GNRL-PEDCO-000-ST-DW-0007
BINAK PRODUCTION UNIT COMPRESSION FACILITIES PLOT PLAN	8001-DWG-PD-163

KEY PLAN



REV.	DATE	P.O.I.S	PREP.	CHK.	APP.	AUT.	DESCRIPTION	BY	DATE	BY	DATE
D02	FEB.2024	APC	R.BERLOUJE	M.FAKHARIAN	S.FARMAZPOUR	**					
D01	JAN.2024	IFA	R.BERLOUJE	M.FAKHARIAN	S.FARMAZPOUR	**					
D00	SEP.2023	IFC	R.BERLOUJE	M.FAKHARIAN	S.FARMAZPOUR	**					
REV.	DATE	P.O.I.S	PREP.	CHK.	APP.	AUT.	DESCRIPTION	CHECKED	REV. APPR.		
PROJECT NAME:							BINAK OILFIELD DEVELOPMENT/SURFACE FACILITIES GAS COMPRESSOR STATION				
PROJECT NO.:							971020				
EPC CONTRACTOR:			EPD/EPC CONTRACTOR (GC):								
 HIRGAN ENERGY - DESIGN & INSPECTION COMPANIES			 PETROIRAN DEVELOPMENT COMPANY								
DRAWING TITLE:							BINAK OILFIELD DEVELOPMENT SURFACE FACILITIES GAS COMPRESSOR STATION				
DATE	SCALE	DRAWING BY	CHECKED BY	PROJECT ENG.							
NO CONSTRUCTION PERMITTED UNLESS DRAWING APPROVED											
APPROVED FOR CONSTRUCTION				BY:	DATE:						
SCALE	SIZE	DRAWING NO.	SHEET NO.	REV.	BUDGET REF.	LOCATION	SIZE	CLASS	SERIAL NO.	SHEET	REVISION
AS SHOWN	A1	BK-GCS-PEDCO-120-ST-DW-0079	1 OF 1	D02	053-073-9184	F	4	Q	709406	1	D02