

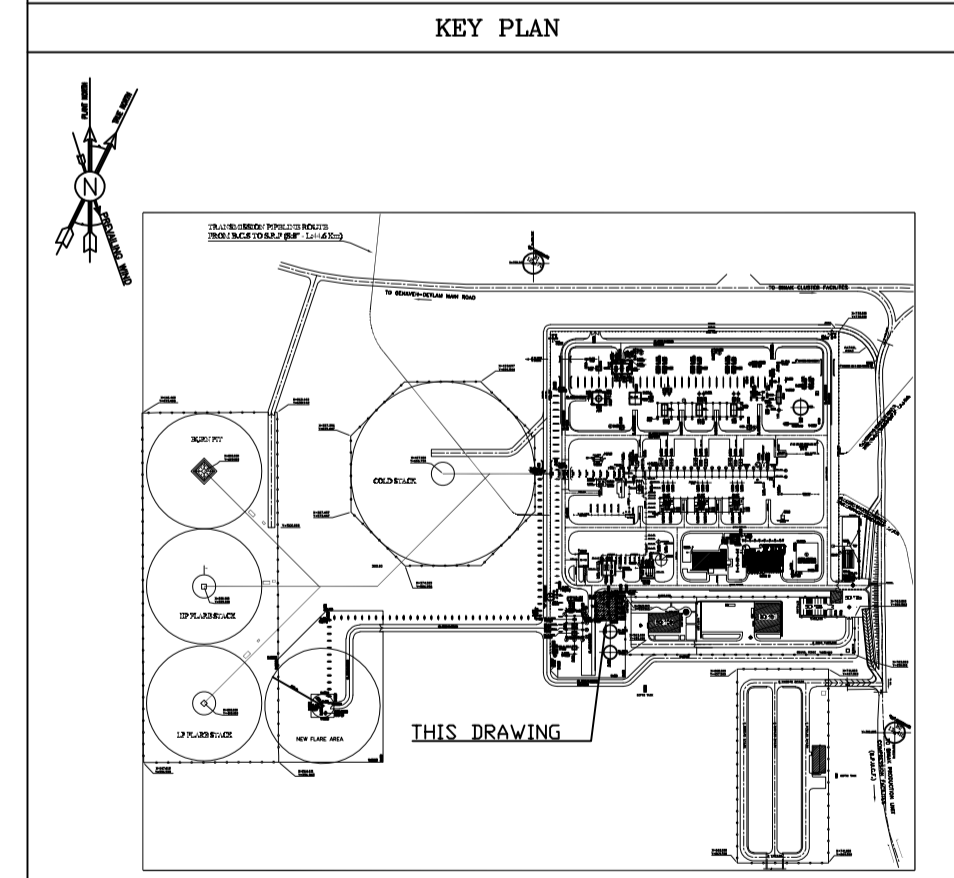
- NOTES
- 1) ALL ELEVATIONS AND COORDINATES ARE IN "m" AND DIMENSIONS ARE IN "mm" UNLESS OTHERWISE NOTED.
  - 2) ALL DIMENSIONS AND ELEVATIONS SHALL BE CHECKED BY THE CONTRACTOR PRIOR TO CONSTRUCTION.
  - 3) ACCORDING TO THE SPECIFICATION OF CONCRETE WORKS:  
"BK-GNRL-PEDCO-000-ST-SP-001" 28 DAYS CHARACTERISTIC COMPRESSIVE STRENGTH OF MAIN CONCRETE IS 30 MPa (ON CYLINDRICAL SPECIMEN)
  - 4) ACCORDING TO THE SPECIFICATION OF CONCRETE WORKS:  
"BK-GNRL-PEDCO-000-ST-SP-001" 28 DAYS CHARACTERISTIC COMPRESSIVE STRENGTH OF LEAN CONCRETE IS 15 MPa (ON CYLINDRICAL SPECIMEN)
  - 5) STRUCTURAL STEEL SHAPE & PLATES SHALL CONFORM TO S235JR WITH MINIMUM YIELD STRESS OF  $F_y=24000 \text{ kg/cm}^2$ .
  - 6) ALL BOLTS ARE HIGH STRENGTH BOLTS GRADE 8.8 WITH MINIMUM TENSILE STRENGTH OF  $F_u=800 \text{ MPa}$ .
  - 7) ANCHOR BOLTS SHALL BE ASTM A307 GRADE C.
  - 8) ALL WELDING SHALL BE IN ACCORDANCE WITH THE LATEST EDITION OF STRUCTURAL WELDING CODE, AWS D1.1/D1.1M.
  - 9) TYPE OF WELDING ELECTRODE SHALL BE E70 AND IN ACCORDANCE WITH SPECIFICATION FOR STRUCTURAL STEEL FABRICATION AND ERECTION.
  - 10) FLANGES SHOULD BE CONTINUOUSLY WELDED TO THE WEB.

LEGEND

F.G.L. : FINISH GROUND LEVEL		REINFORCED CONCRETE
T.O.G. : TOP OF GROUT		LEAN CONCRETE
T.O.F. : TOP OF FOUNDATION		GROUND
B.O.B.P. : BOTTOM OF BASEPLATE		
T.O.B. : TOP OF BEAM		
T.O.PED. : TOP OF PEDESTAL		
C.O.ST. : CENTER OF STRUT		
T.O.S. : TOP OF STEEL		

REFERENCE DRAWING

REFERENCE DRAWING	DRG. No.
CALCULATION NOTE FOR FIRE WATER PUMP SHELTER	BK-GCS-PEDCO-120-ST-CN-0009
FOUNDATION DRAWING FOR FIRE WATER PUMP SHELTER	BK-GCS-PEDCO-120-ST-DW-0065
ARCHITECTURAL DRAWING FOR FIRE WATER PUMP SHELTER	BK-GCS-PEDCO-120-AR-DW-0066
STANDARD DRAWING FOR ANCHOR BOLTS	BK-GNRL-PEDCO-000-ST-DW-0002
GENERAL NOTES-STEEL STRUCTURES	BK-GNRL-PEDCO-000-ST-DW-0011
SPECIFICATION FOR ERECTION OF STEEL STRUCTURES	BK-GNRL-PEDCO-000-ST-SP-0005
SPECIFICATION FOR FABRICATION OF STEEL STRUCTURES	BK-GNRL-PEDCO-000-ST-SP-0003
SPECIFICATION FOR STEEL STRUCTURAL WORK	BK-GNRL-PEDCO-000-ST-SP-0008
UNIT PLOT PLAN DRAWING	BK-GCS-PEDCO-120-PL-PY-0001
GEOTECHNICAL INVESTIGATION REPORT FOR COMPRESSOR STATION	BK-GCS-PEDCO-120-GT-RT-0001
SPECIFICATION FOR GROUTING	BK-GNRL-PEDCO-000-ST-SP-0004
SPECIFICATION FOR PAINTING	BK-GNRL-PEDCO-000-PI-SP-0006
STANDARD DRAWING FOR FIREPROOFING	BK-GNRL-PEDCO-000-ST-DW-0001



REV.	DESCRIPTION	BY	DATE	CHECKED	BY	DATE	REV. APPR.
D02	APR. 2024	APC	R.BERLOUË	M.PAKHARIAN	S.PARMAKZPOUR	**	**
D01	NOV. 2023	IPA	R.BERLOUË	M.PAKHARIAN	S.PARMAKZPOUR	**	**
D00	AUG. 2023	IFC	R.BERLOUË	M.PAKHARIAN	A.M.MOHSENI	**	**

PROJECT NAME: **BINAK OILFIELD DEVELOPMENT/SURFACE FACILITIES GAS COMPRESSOR STATION**

PROJECT NO.: 971020

EPC CONTRACTOR: **HIRGAN ENERGY - DESIGN & INSPECTION COMPANIES**

EPD/EPC CONTRACTOR (GC): **PETROIRAN DEVELOPMENT COMPANY**

DRAWING TITLE: **STRUCTURAL DRAWING FOR FIRE WATER PUMP SHELTER**

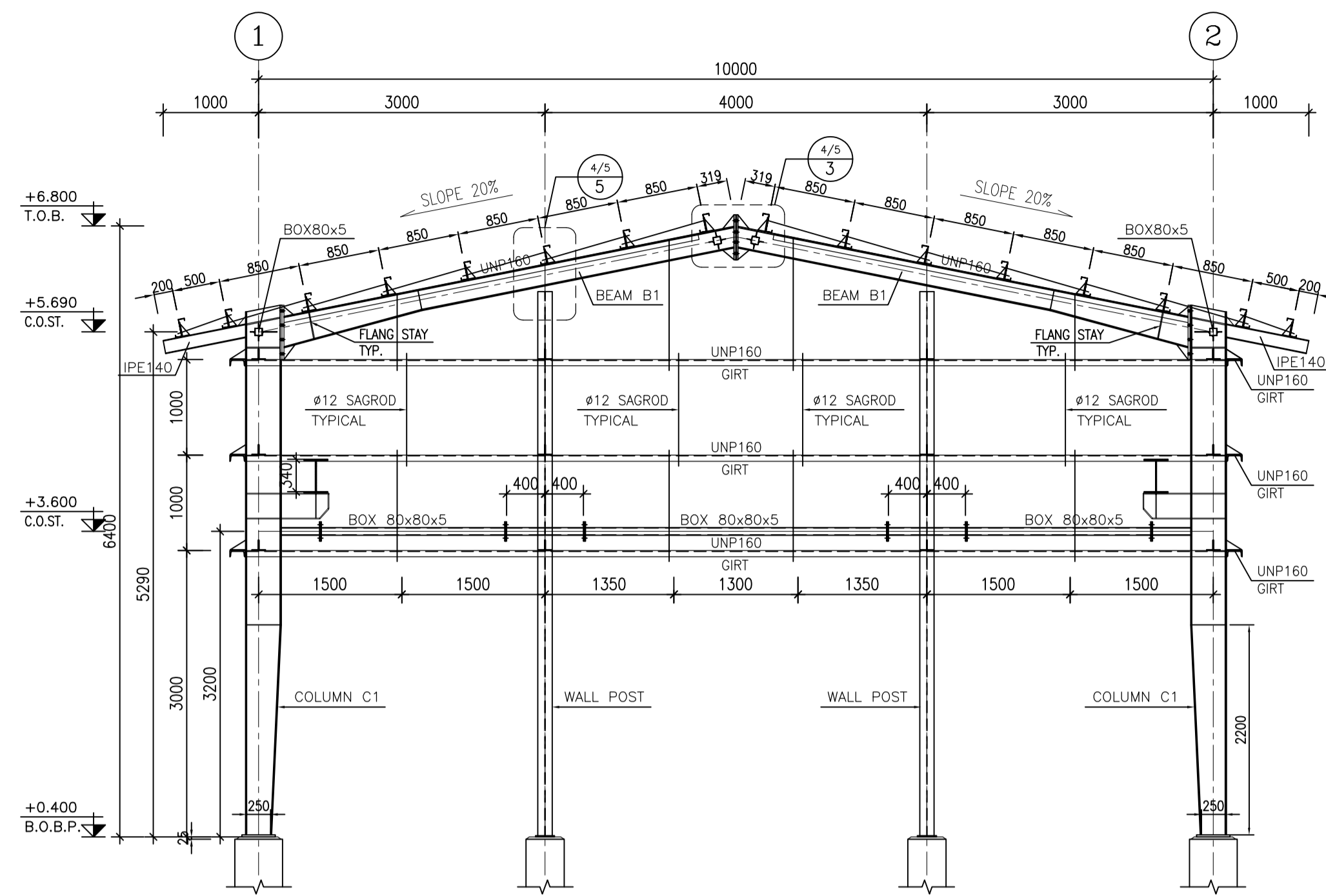
NO CONSTRUCTION PERMITTED UNLESS DRAWING APPROVED

SCALE	SIZE	DRAWING NO.	SHEET NO.	REV.	BUDGET REF.	LOCATION	SIZE	CLASS	SERIAL NO.	SHEET	REVISION
AS SHOWN	A1	BK-GCS-PEDCO-120-ST-DW-0066	1 OF 5	D02	053-073-9184	F	4	M	709203	1	D02

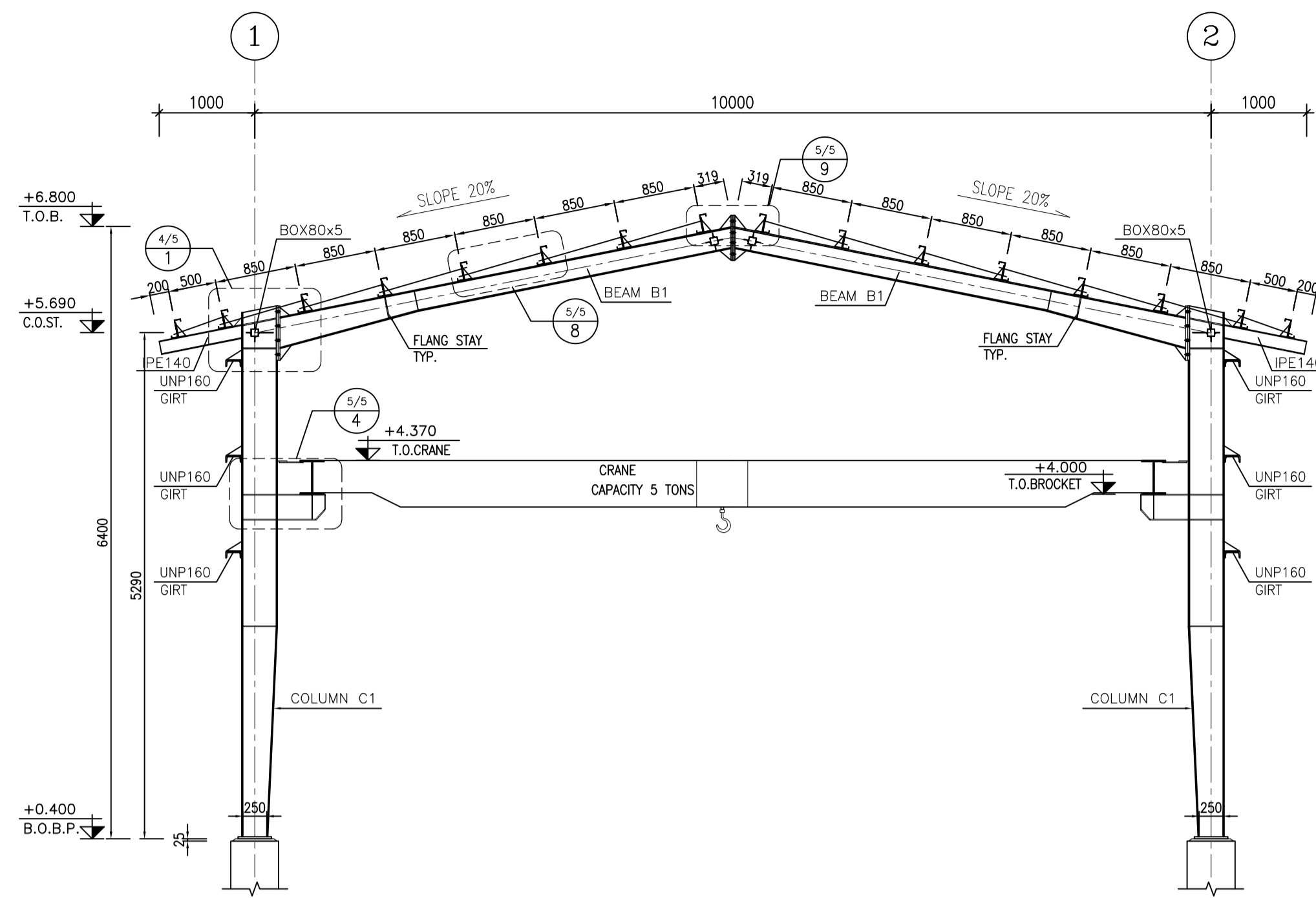
امحل و کلیه نسخ این نقشه و حق اقتباس متعلق به شرکت ملی مناطق نفت خیز جنوب میباشد.

THE ORIGINAL AND ALL COPIES OF THIS DRAWING TOGETHER WITH THE COPYRIGHT THEREIN ARE THE SOLE PROPERTY OF N.I.S.O.C./ FIELDS

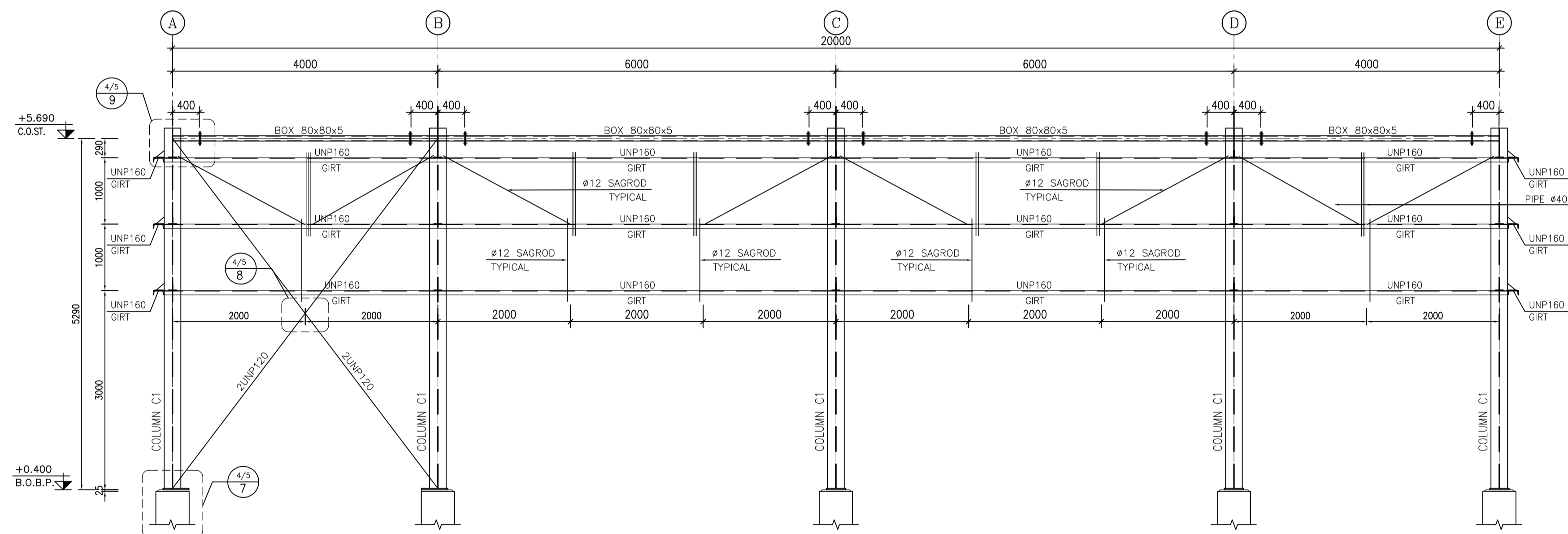
DATE	SCALE	DRAWING BY	CHECKED BY	PROJECT ENG.



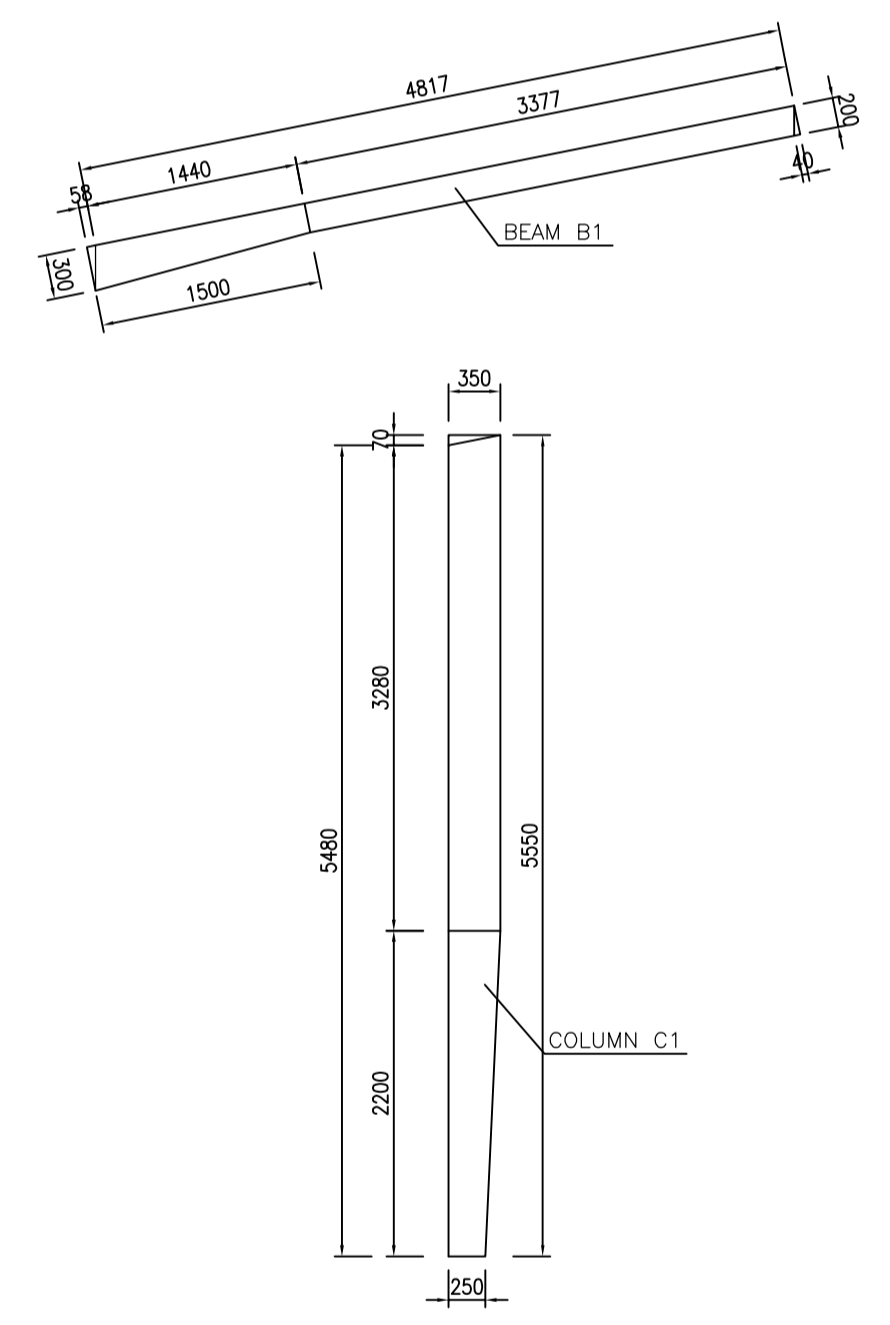
1:50 ELEVATION VIEW ON AXES "A&E"



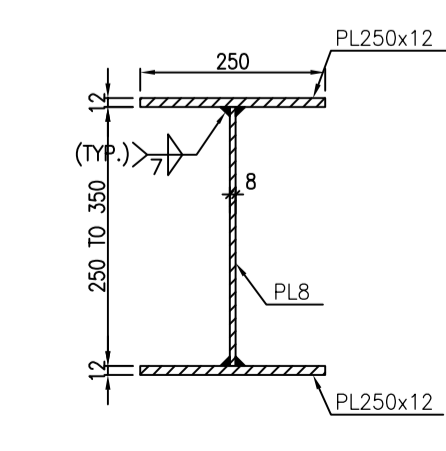
1:50 ELEVATION VIEW ON AXES "B,C&D"



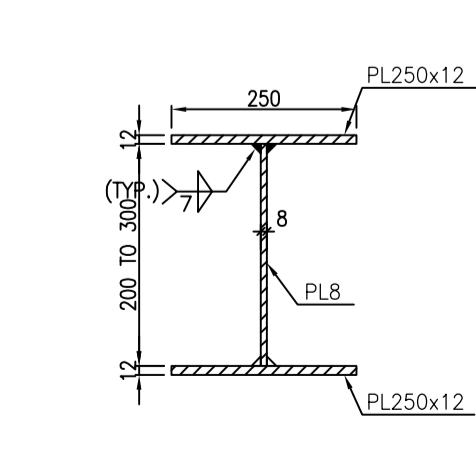
1:50 ELEVATION VIEW ON AXES "1&2"



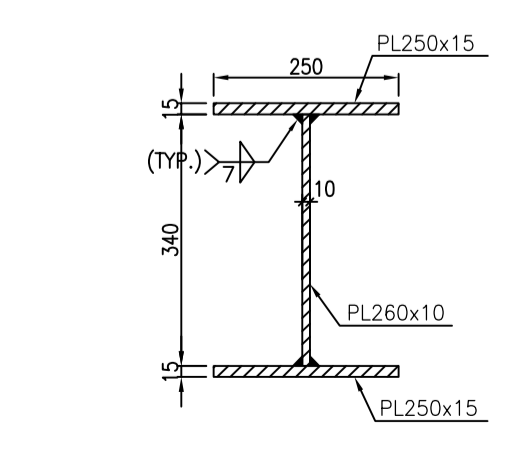
1:50 WEB OF COLUMN C1 & BEAM B1 DETAIL



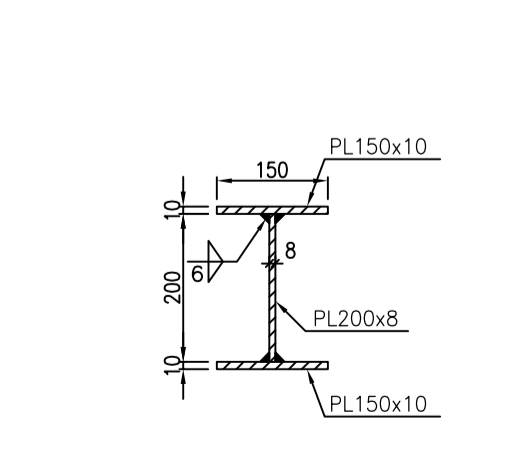
1:10 COLUMN C1



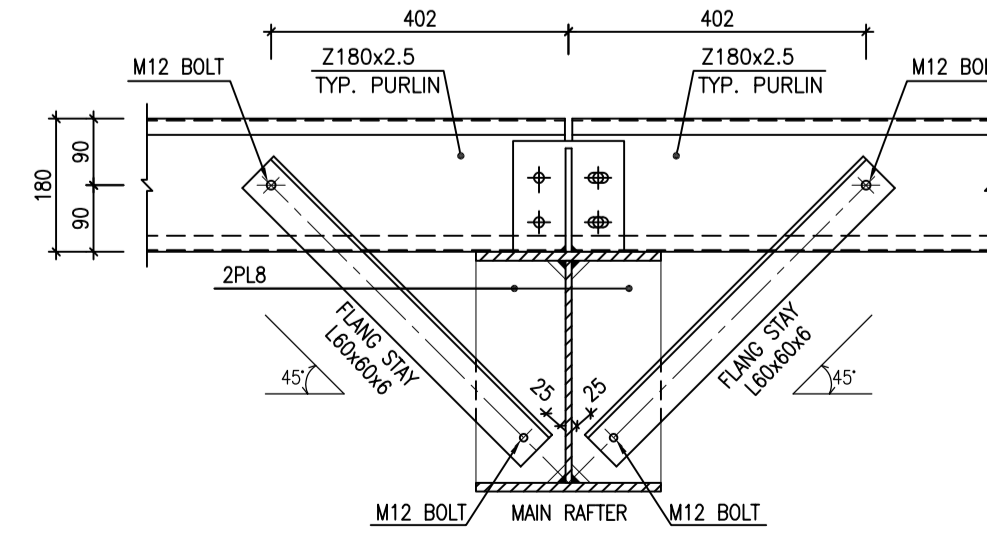
1:10 BEAM B1



1:10 CRANE RUNWAY BEAM



1:10 WALLPOST BEAM



1:10 FLANG STAY TYPICAL DETAIL

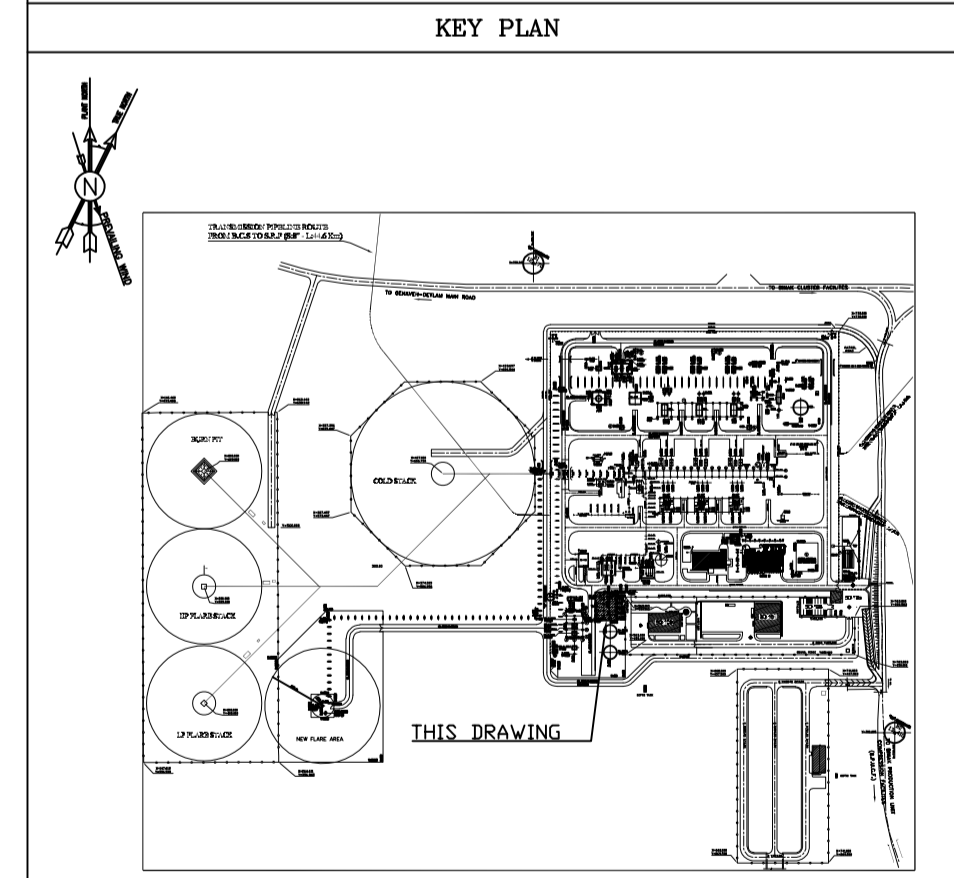
- NOTES**
- 1) ALL ELEVATIONS AND COORDINATES ARE IN "m" AND DIMENSIONS ARE IN "mm" UNLESS OTHERWISE NOTED.
  - 2) ALL DIMENSIONS AND ELEVATIONS SHALL BE CHECKED BY THE CONTRACTOR PRIOR TO CONSTRUCTION.
  - 3) ACCORDING TO THE SPECIFICATION OF CONCRETE WORKS:  
"BK-GNRL-PEDCO-000-ST-SP-0001" 28 DAYS CHARACTERISTIC COMPRESSIVE STRENGTH OF MAIN CONCRETE IS 30 MPa (ON CYLINDRICAL SPECIMEN)
  - 4) ACCORDING TO THE SPECIFICATION OF CONCRETE WORKS:  
"BK-GNRL-PEDCO-000-ST-SP-0001" 28 DAYS CHARACTERISTIC COMPRESSIVE STRENGTH OF LEAN CONCRETE IS 15 MPa (ON CYLINDRICAL SPECIMEN)
  - 5) STRUCTURAL STEEL SHAPE & PLATES SHALL CONFORM TO S235JR WITH MINIMUM YIELD STRESS OF Fy=2400 kg/cm.
  - 6) ALL BOLTS ARE HIGH STRENGTH BOLTS GRADE 8.8 WITH MINIMUM TENSILE STRENGTH OF Fu=800 MPa.
  - 7) ANCHOR BOLTS SHALL BE ASTM A307 GRADE C.
  - 8) ALL WELDING SHALL BE IN ACCORDANCE WITH THE LATEST EDITION OF STRUCTURAL WELDING CODE, AWS D1.1/D1.1M.
  - 9) TYPE OF WELDING ELECTRODE SHALL BE E70 AND IN ACCORDANCE WITH SPECIFICATION FOR STRUCTURAL STEEL FABRICATION AND ERECTION.
  - 10) FLANGES SHOULD BE CONTINUOUSLY WELDED TO THE WEB.

**LEGEND**

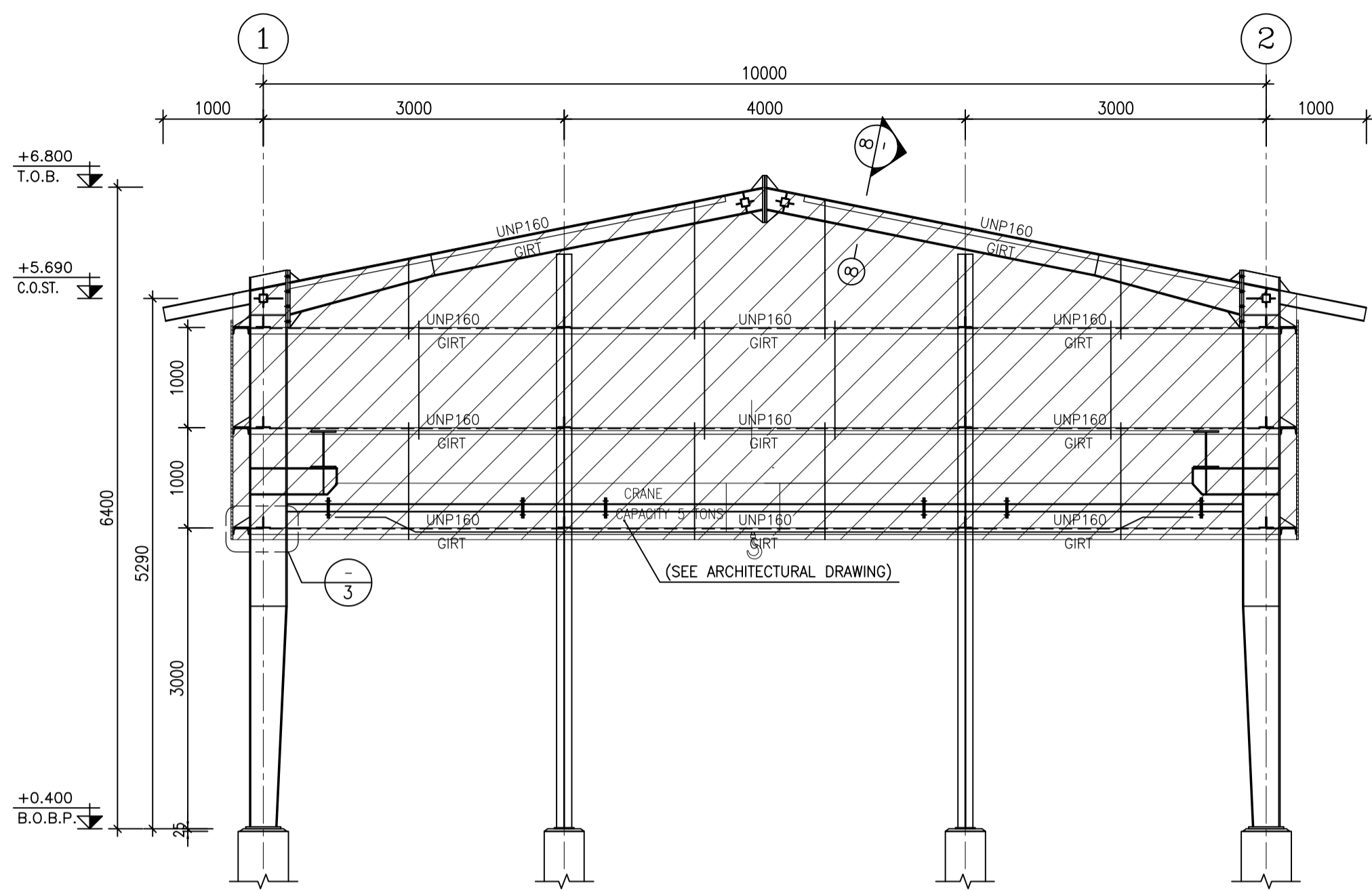
F.G.L. : FINISH GROUND LEVEL	REINFORCED CONCRETE
T.O.G. : TOP OF GROUT	LEAN CONCRETE
T.O.F. : TOP OF FOUNDATION	GROUND
B.O.B.P. : BOTTOM OF BASEPLATE	
T.O.B. : TOP OF BEAM	
T.O.PED. : TOP OF PEDESTAL	
C.O.ST. : CENTER OF STRUT	
T.O.S. : TOP OF STEEL	

**REFERENCE DRAWING**

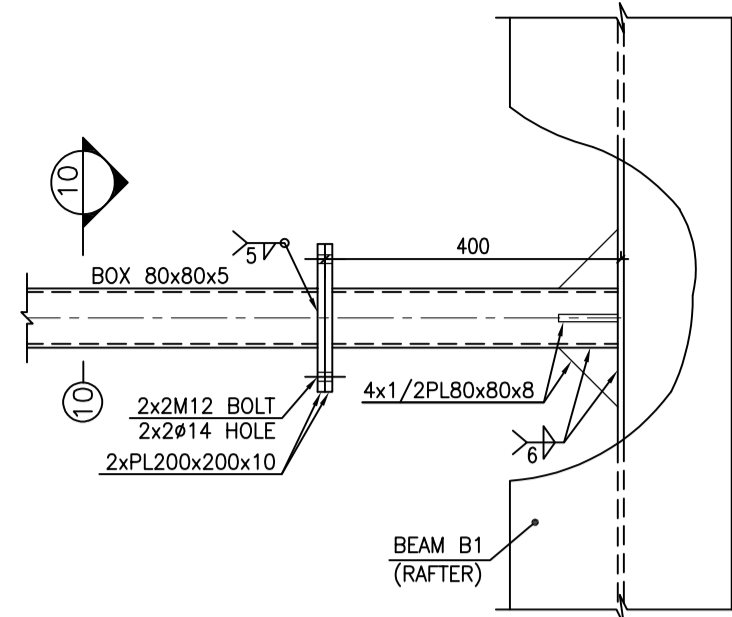
REFERENCE DRAWING	DRG. No.
CALCULATION NOTE FOR FIRE WATER PUMP SHELTER	BK-GCS-PEDCO-120-ST-CN-0009
FOUNDATION DRAWING FOR FIRE WATER PUMP SHELTER	BK-GCS-PEDCO-120-ST-DW-0065
ARCHITECTURAL DRAWING FOR FIRE WATER PUMP SHELTER	BK-GCS-PEDCO-120-AR-DW-0006
STANDARD DRAWING FOR ANCHOR BOLTS	BK-GNRL-PEDCO-000-ST-DW-0002
GENERAL NOTES-STEEL STRUCTURES	BK-GNRL-PEDCO-000-ST-DW-0011
SPECIFICATION FOR ERECTION OF STEEL STRUCTURES	BK-GNRL-PEDCO-000-ST-SP-0005
SPECIFICATION FOR FABRICATION OF STEEL STRUCTURES	BK-GNRL-PEDCO-000-ST-SP-0003
SPECIFICATION FOR STEEL STRUCTURAL WORK	BK-GNRL-PEDCO-000-ST-SP-0008
UNIT PLOT PLAN DRAWING	BK-GCS-PEDCO-120-PL-PY-0001
GEOTECHNICAL INVESTIGATION REPORT FOR COMPRESSOR STATION	BK-GCS-PEDCO-120-GT-RT-0001
SPECIFICATION FOR GROUTING	BK-GNRL-PEDCO-000-ST-SP-0004
SPECIFICATION FOR PAINTING	BK-GNRL-PEDCO-000-ST-SP-0006
STANDARD DRAWING FOR FIREPROOFING	BK-GNRL-PEDCO-000-ST-DW-0001



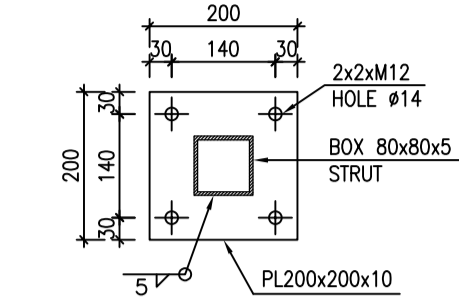
REV.	DATE	P.O.I.S	PREP.	CHK.	APP.	AUT.	DESCRIPTION	BY	DATE	BY	DATE																					
D02	APR.2024	APC	R.BERLOUIE	M.PAKHARIAN	S.PARMAKZADEH	**																										
D01	NOV.2023	IPA	R.BERLOUIE	M.PAKHARIAN	S.PARMAKZADEH	**																										
D00	AUG.2023	IFC	R.BERLOUIE	M.PAKHARIAN	A.M.MOHSSENI	**																										
REV.	DATE	P.O.I.S	PREP.	CHK.	APP.	AUT.	DESCRIPTION	CHECKED	REV.	APP.																						
PROJECT NAME:							BINAK OILFIELD DEVELOPMENT/SURFACE FACILITIES GAS COMPRESSOR STATION																									
PROJECT NO.:							971020																									
EPC CONTRACTOR:			EPD/EPC CONTRACTOR (GC):																													
HIRGAN ENERGY - DESIGN & INSPECTION COMPANIES			PETROIRAN DEVELOPMENT COMPANY																													
DATE			SCALE			DRAWING BY			CHECKED BY			PROJECT ENG.																				
DRAWING TITLE:												NO CONSTRUCTION PERMITTED UNLESS DRAWING APPROVED																				
STRUCTURAL DRAWING FOR FIRE WATER PUMP SHELTER												APPROVED FOR CONSTRUCTION																				
SCALE												BY:																				
AS SHOWN												DATE:																				
SCALE			DRAWING NO.			SHEET NO.			REV.			BUDGET REF.			LOCATION			SIZE			CLASS			SERIAL NO.			SHEET			REVISION		
A1			BK-GCS-PEDCO-120-ST-DW-0066			2 OF 5			D02			053-073-9184			F			4			M			709203			2			D02		



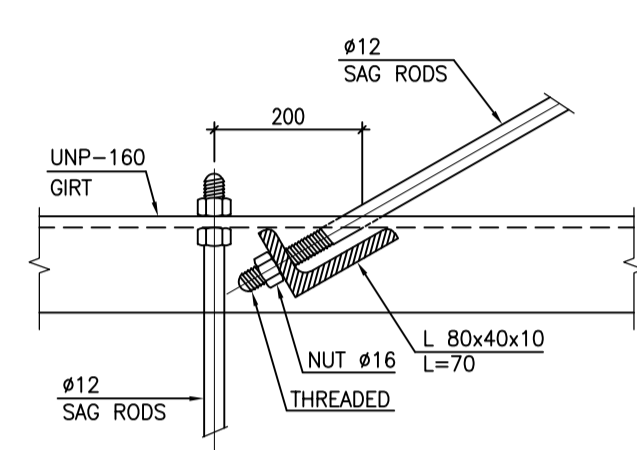
1:50 1 ELEVATION VIEW ON AXES "A&E"



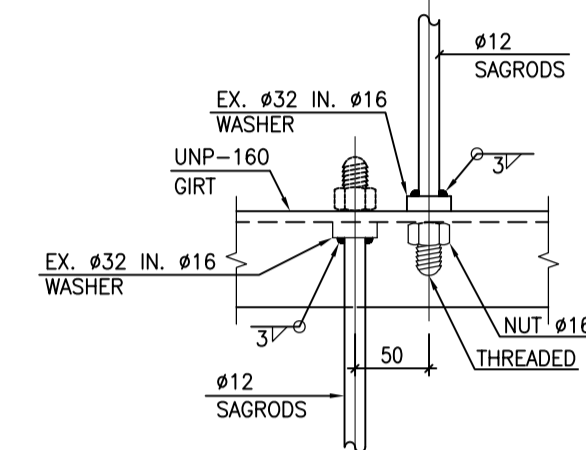
1:10 9 TYP. SAGROD IN GIRT



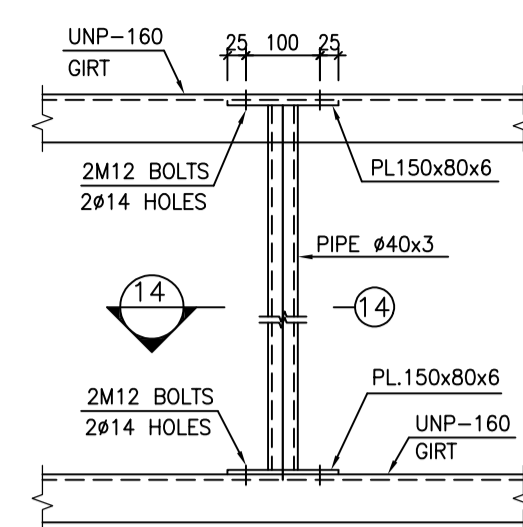
1:10 10 TYP. SAGROD IN GIRT



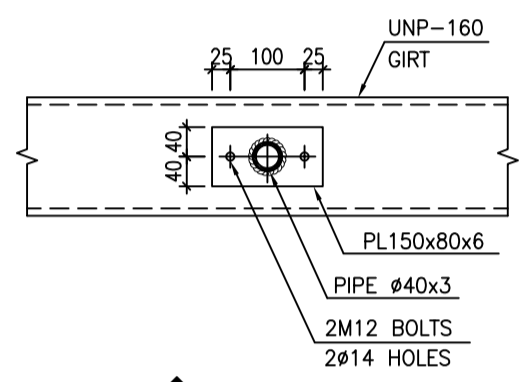
N.T.S. 11 TYP. SAGROD IN GIRT



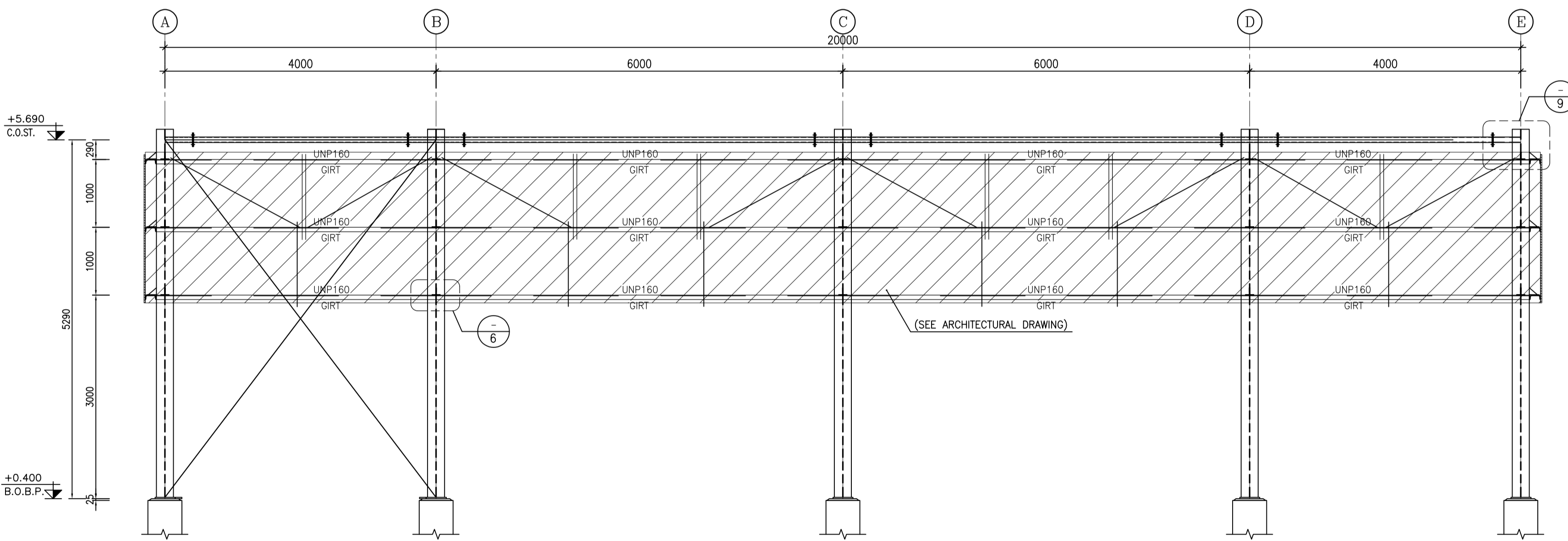
N.T.S. 12 TYP. SAGROD IN GIRT



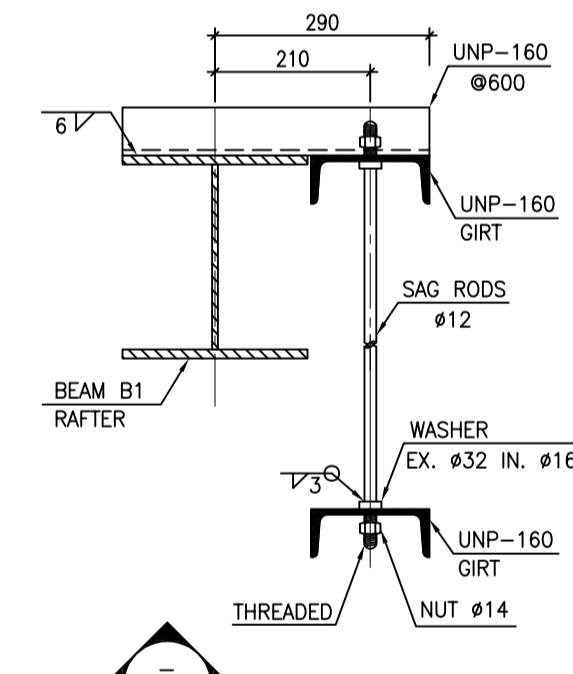
1:10 13 TYP. PIPE TO GIRT CONNECTION DETAIL



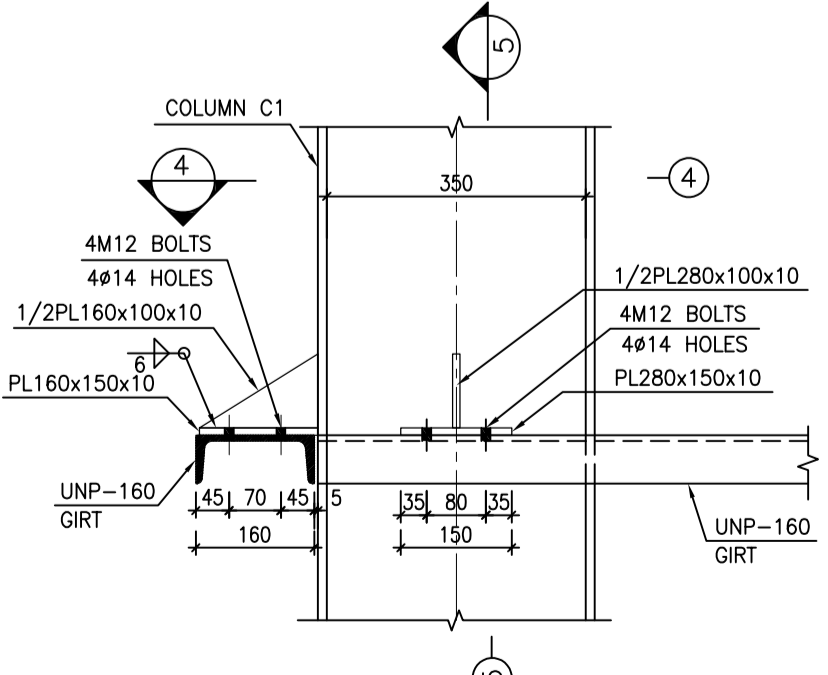
1:10 14



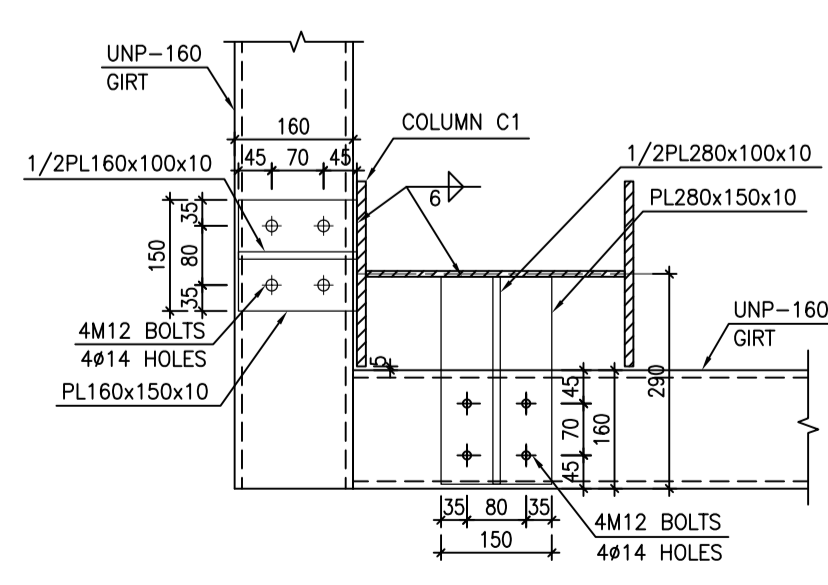
1:50 2 ELEVATION VIEW ON AXES "1&2"



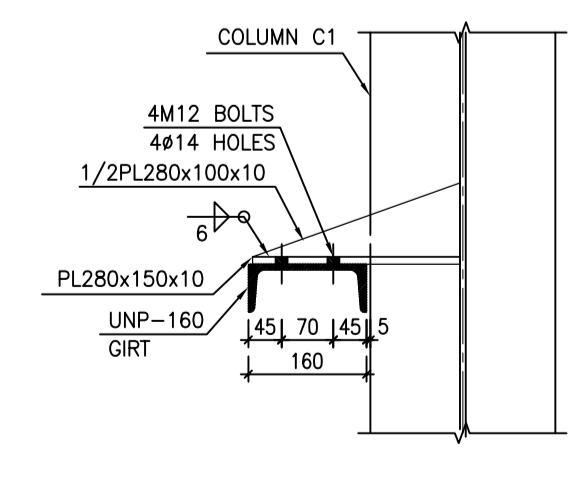
1:10 8



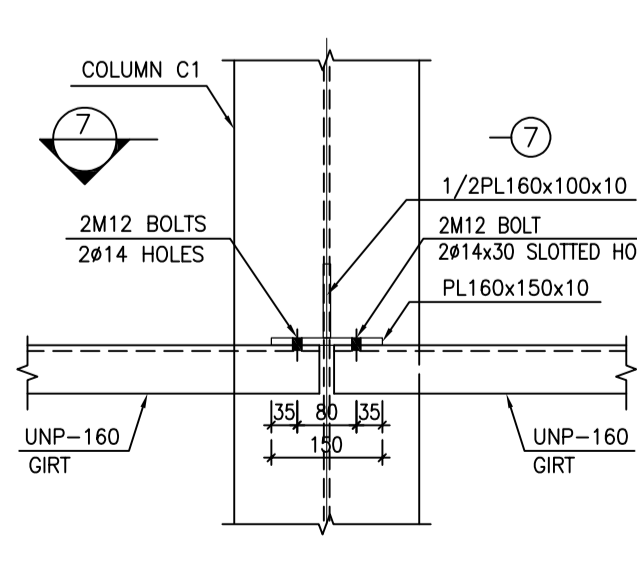
1:10 3



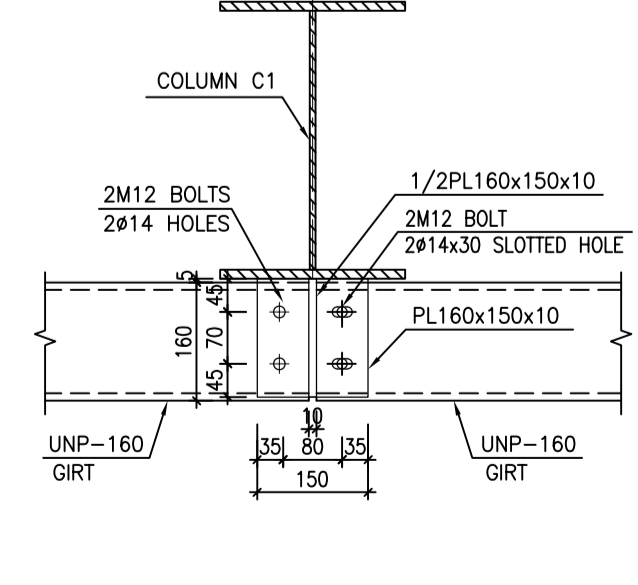
1:10 4



1:10 5



1:10 6



1:10 7

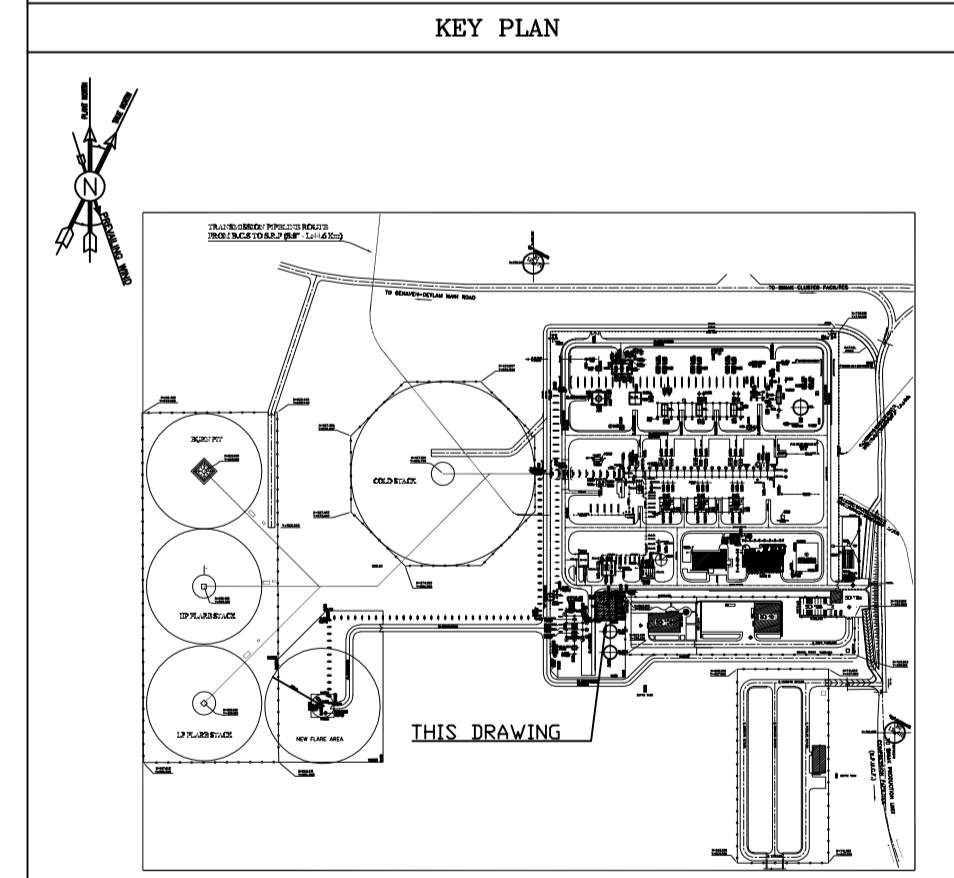
- NOTES
- 1) ALL ELEVATIONS AND COORDINATES ARE IN "m" AND DIMENSIONS ARE IN "mm" UNLESS OTHERWISE NOTED.
  - 2) ALL DIMENSIONS AND ELEVATIONS SHALL BE CHECKED BY THE CONTRACTOR PRIOR TO CONSTRUCTION.
  - 3) ACCORDING TO THE SPECIFICATION OF CONCRETE WORKS:  
"BK-GNRL-PEDCO-000-ST-SP-0001" 28 DAYS CHARACTERISTIC COMPRESSIVE STRENGTH OF MAIN CONCRETE IS 30 MPa (ON CYLINDRICAL SPECIMEN)
  - 4) ACCORDING TO THE SPECIFICATION OF CONCRETE WORKS:  
"BK-GNRL-PEDCO-000-ST-SP-0001" 28 DAYS CHARACTERISTIC COMPRESSIVE STRENGTH OF LEAN CONCRETE IS 15 MPa (ON CYLINDRICAL SPECIMEN)
  - 5) STRUCTURAL STEEL SHAPE & PLATES SHALL CONFORM TO S235JR WITH MINIMUM YIELD STRESS OF Fy=24000 kg/cm.
  - 6) ALL BOLTS ARE HIGH STRENGTH BOLTS GRADE 8.8 WITH MINIMUM TENSILE STRENGTH OF Fu=800 MPa.
  - 7) ANCHOR BOLTS SHALL BE ASTM A307 GRADE C.
  - 8) ALL WELDING SHALL BE IN ACCORDANCE WITH THE LATEST EDITION OF STRUCTURAL WELDING CODE, AWS D1.1/D1.1M.
  - 9) TYPE OF WELDING ELECTRODE SHALL BE E70 AND IN ACCORDANCE WITH SPECIFICATION FOR STRUCTURAL STEEL FABRICATION AND ERECTION.
  - 10) FLANGES SHOULD BE CONTINUOUSLY WELDED TO THE WEB.

LEGEND

F.G.L. : FINISH GROUND LEVEL		REINFORCED CONCRETE
T.O.G. : TOP OF GROUT		LEAN CONCRETE
T.O.F. : TOP OF FOUNDATION		GROUND
B.O.B.P. : BOTTOM OF BASEPLATE		
T.O.B. : TOP OF BEAM		
T.O.PED. : TOP OF PEDESTAL		
C.O.ST. : CENTER OF STRUT		
T.O.S. : TOP OF STEEL		

REFERENCE DRAWING

REFERENCE DRAWING	DRG. No.
CALCULATION NOTE FOR FIRE WATER PUMP SHELTER	BK-GCS-PEDCO-120-ST-CN-0009
FOUNDATION DRAWING FOR FIRE WATER PUMP SHELTER	BK-GCS-PEDCO-120-ST-DW-0065
ARCHITECTURAL DRAWING FOR FIRE WATER PUMP SHELTER	BK-GCS-PEDCO-120-AR-DW-0066
STANDARD DRAWING FOR ANCHOR BOLTS	BK-GNRL-PEDCO-000-ST-DW-0002
GENERAL NOTES-STEEL STRUCTURES	BK-GNRL-PEDCO-000-ST-DW-0011
SPECIFICATION FOR ERECTION OF STEEL STRUCTURES	BK-GNRL-PEDCO-000-ST-SP-0005
SPECIFICATION FOR FABRICATION OF STEEL STRUCTURES	BK-GNRL-PEDCO-000-ST-SP-0003
SPECIFICATION FOR STEEL STRUCTURAL WORK	BK-GNRL-PEDCO-000-ST-SP-0008
UNIT PLOT PLAN DRAWING	BK-GCS-PEDCO-120-PL-PY-0001
GEOTECHNICAL INVESTIGATION REPORT FOR COMPRESSOR STATION	BK-GCS-PEDCO-120-GT-RT-0001
SPECIFICATION FOR GROUTING	BK-GNRL-PEDCO-000-ST-SP-0004
SPECIFICATION FOR PAINTING	BK-GNRL-PEDCO-000-PI-SP-0006
STANDARD DRAWING FOR FIREPROOFING	BK-GNRL-PEDCO-000-ST-DW-0001



REV.	DATE	P.O.I.S	PREP.	CHK.	APP.	AUT.
D02	APR.2024	APC	R.BERLOUIE	M.FAKHARIAN	S.FARMAKZPOUR	**
D01	NOV.2023	IFA	R.BERLOUIE	M.FAKHARIAN	S.FARMAKZPOUR	**
D00	AUG.2023	IFC	R.BERLOUIE	M.FAKHARIAN	A.M.MOHSSENI	**

PROJECT NAME: BINAK OILFIELD DEVELOPMENT/SURFACE FACILITIES GAS COMPRESSOR STATION

PROJECT NO.: 971020

EPC CONTRACTOR: HIRGAN ENERGY - DESIGN & INSPECTION COMPANIES

EPD/EPC CONTRACTOR (GC): PETROIRAN DEVELOPMENT COMPANY

DRAWING TITLE: STRUCTURAL DRAWING FOR FIRE WATER PUMP SHELTER

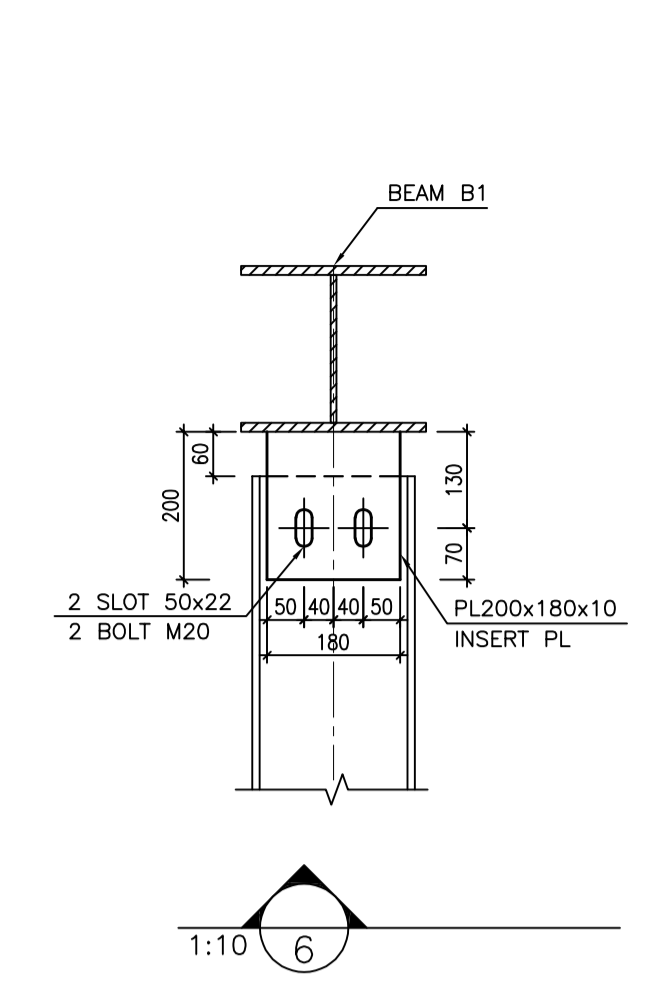
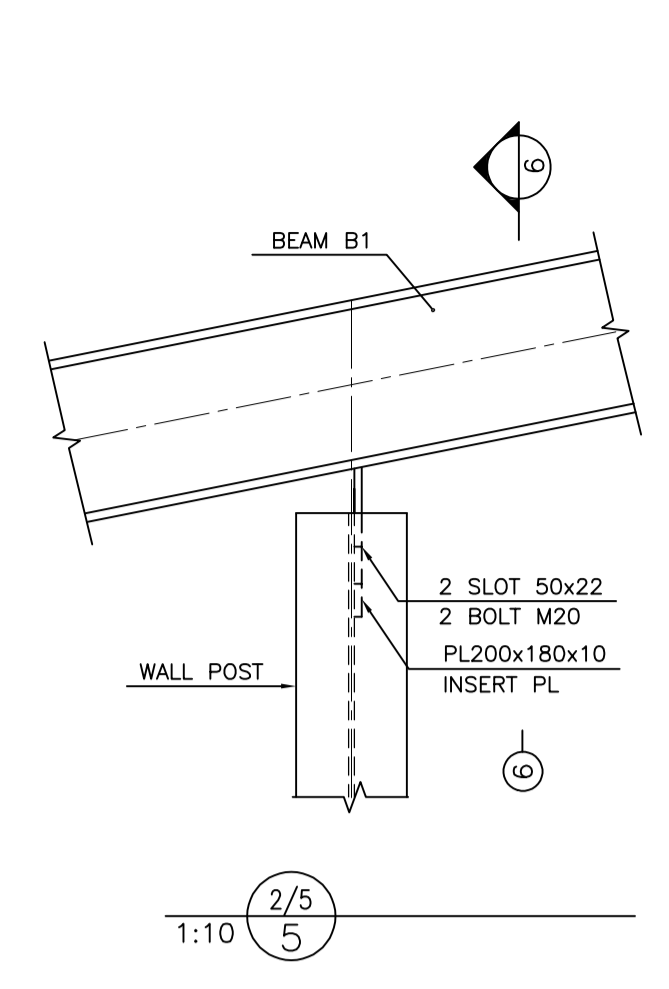
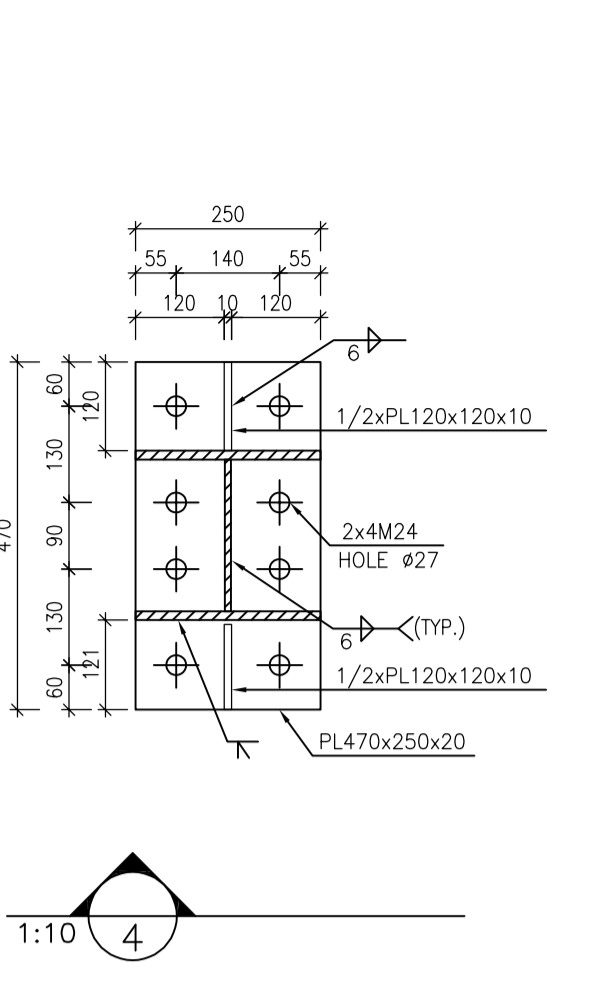
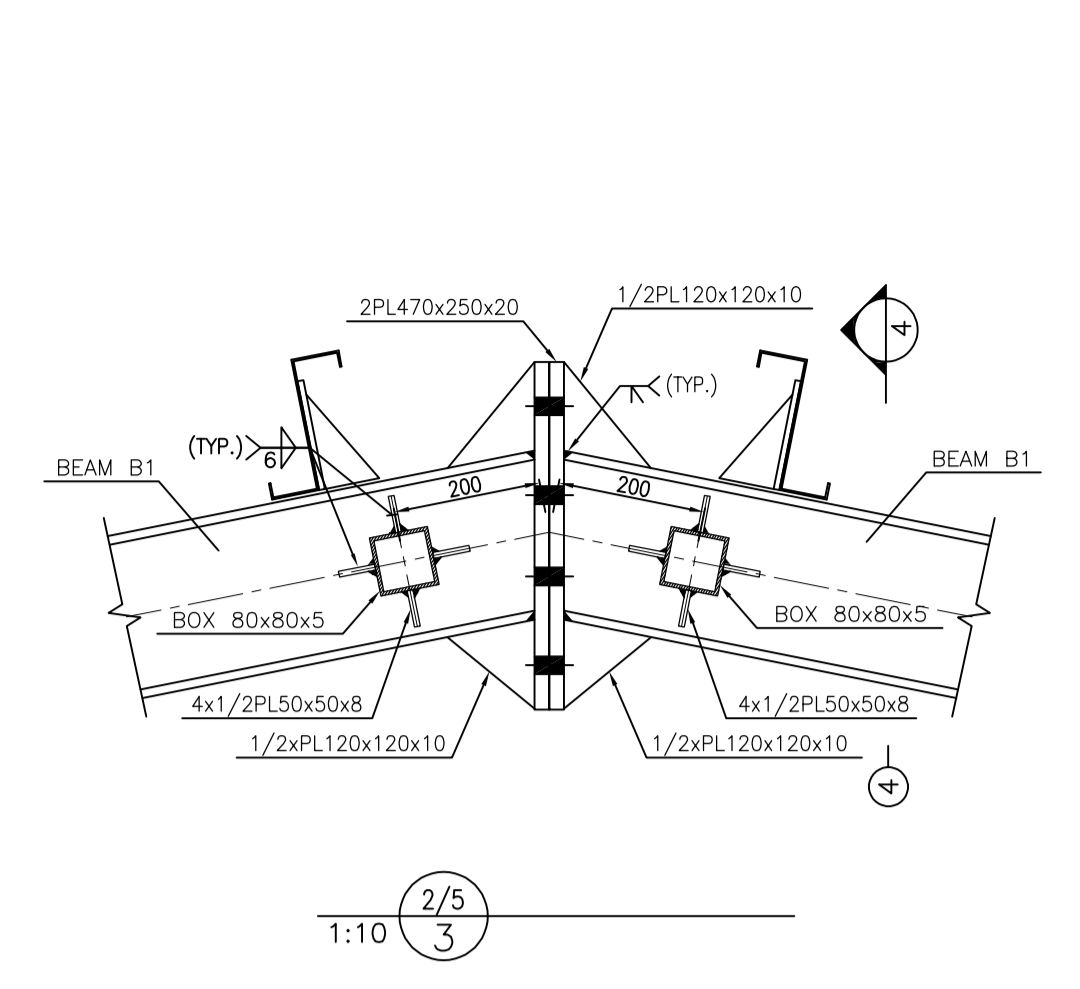
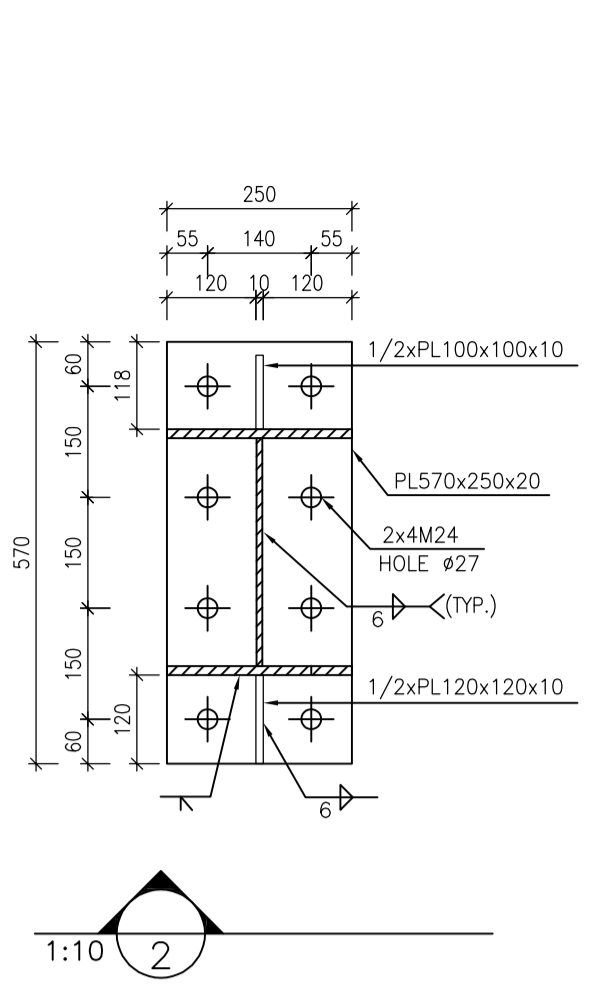
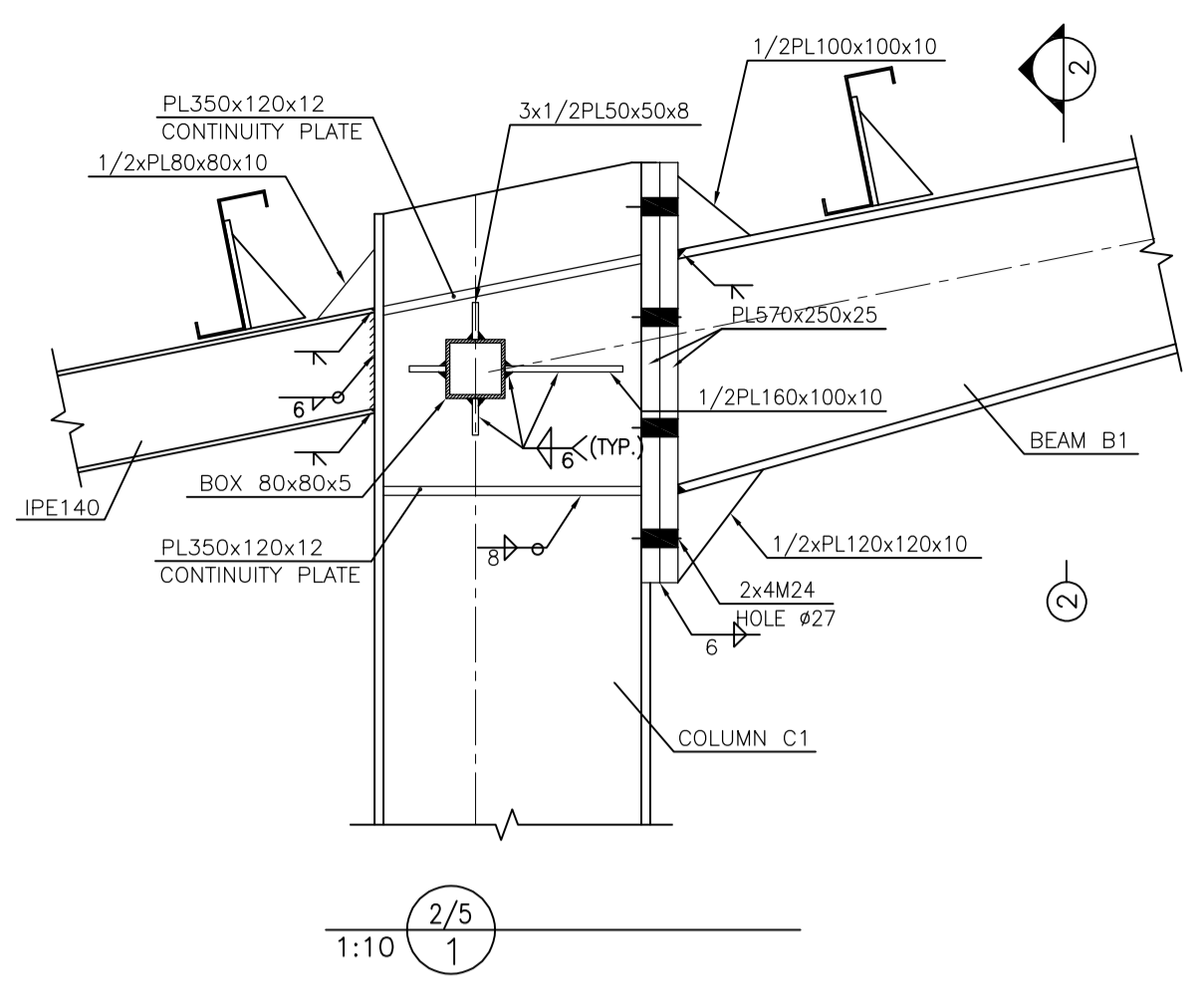
NO CONSTRUCTION PERMITTED UNLESS DRAWING APPROVED

SCALE	SIZE	DRAWING NO.	SHEET NO.	REV.	BUDGET REF.	LOCATION	SIZE	CLASS	SERIAL NO.	SHEET	REVISION
AS SHOWN	A1	BK-GCS-PEDCO-120-ST-DW-0066	3 OF 5	D02	053-073-9184	F	4	M	709203	3	D02

امحل و کلیه نسخ این نقشه و حق اقتباس متعلق به شرکت ملی مناطق نفت خیز جنوب میباشد.

THE ORIGINAL AND ALL COPIES OF THIS DRAWING TOGETHER WITH THE COPYRIGHT THEREIN ARE THE SOLE PROPERTY OF N.I.S.O.C./ FIELDS

DATE	SCALE	DRAWING BY	CHECKED BY	PROJECT ENG.



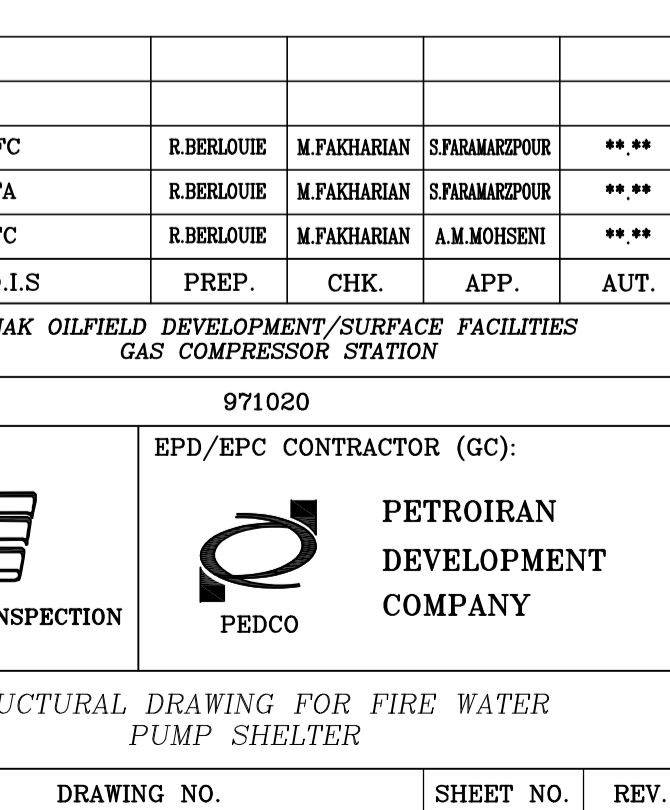
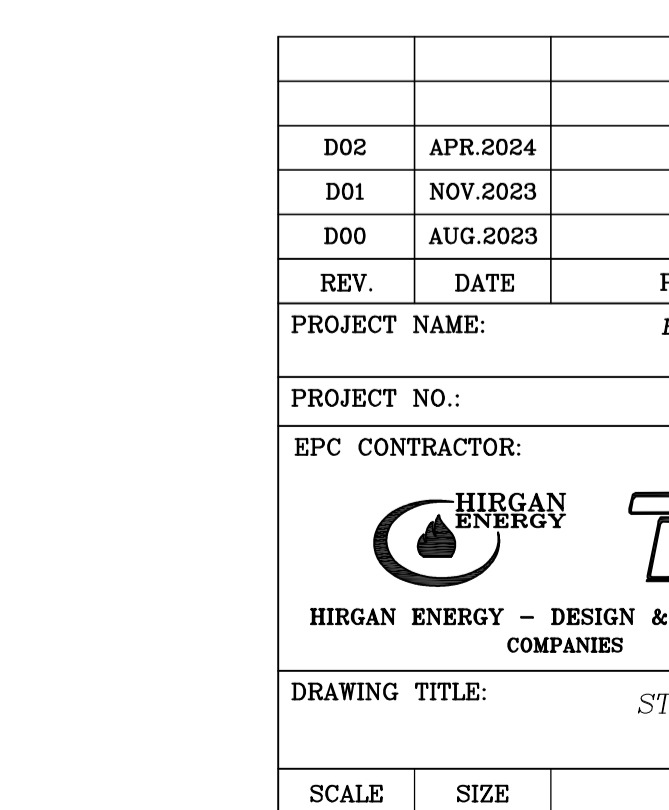
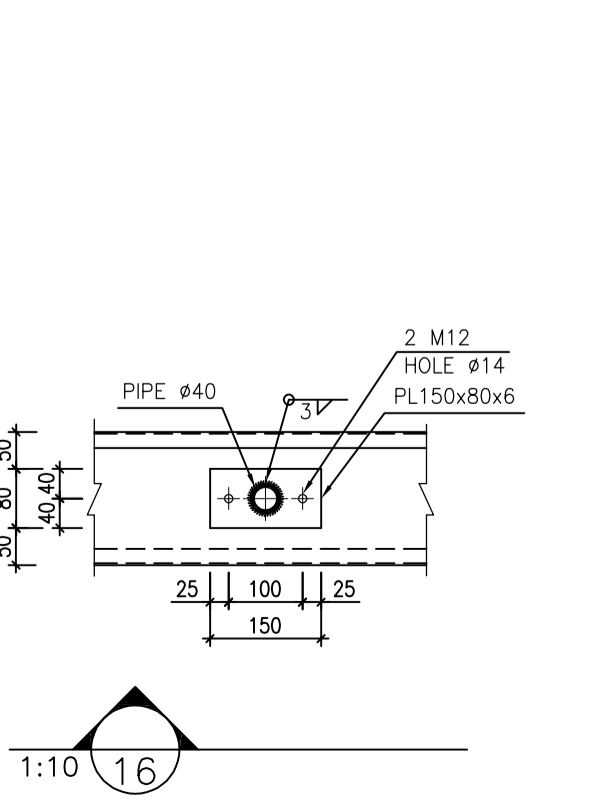
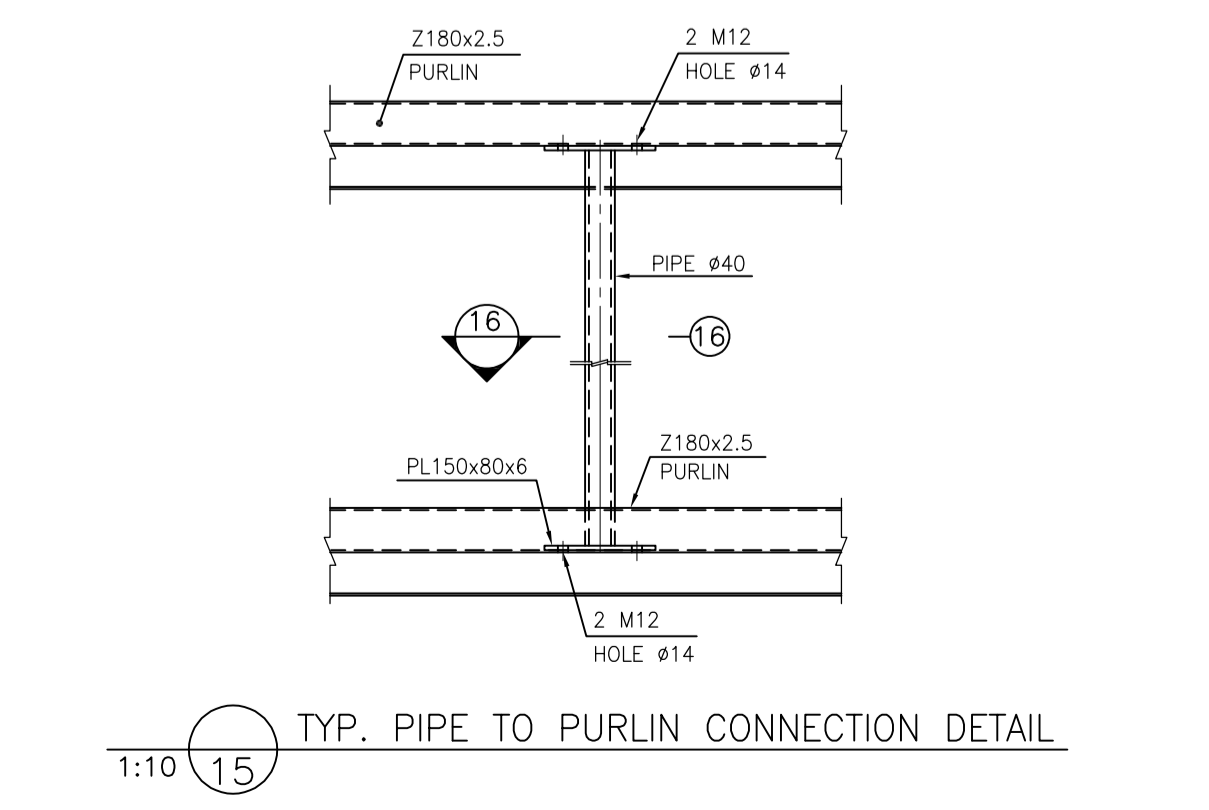
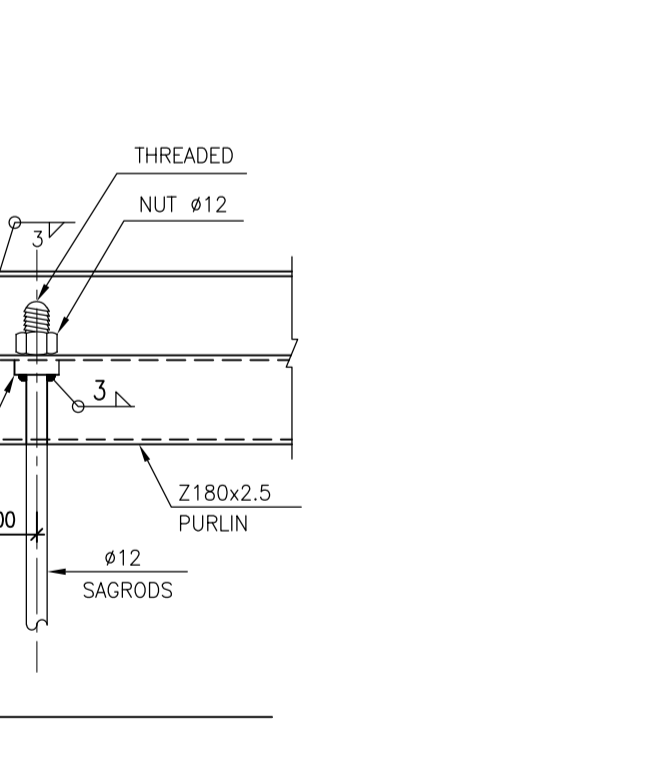
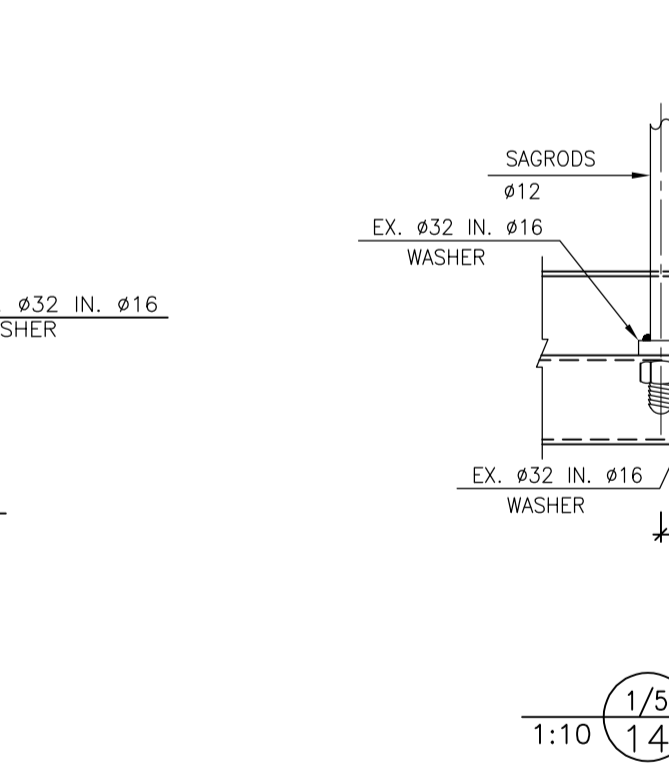
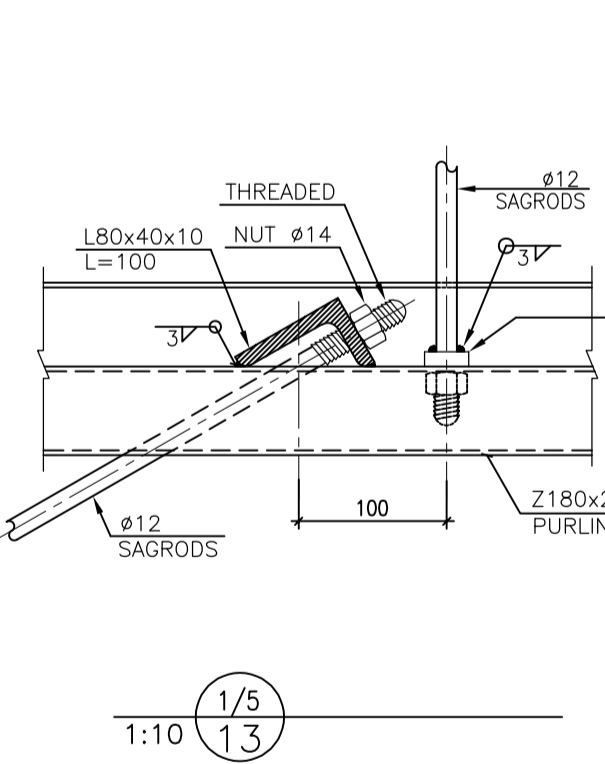
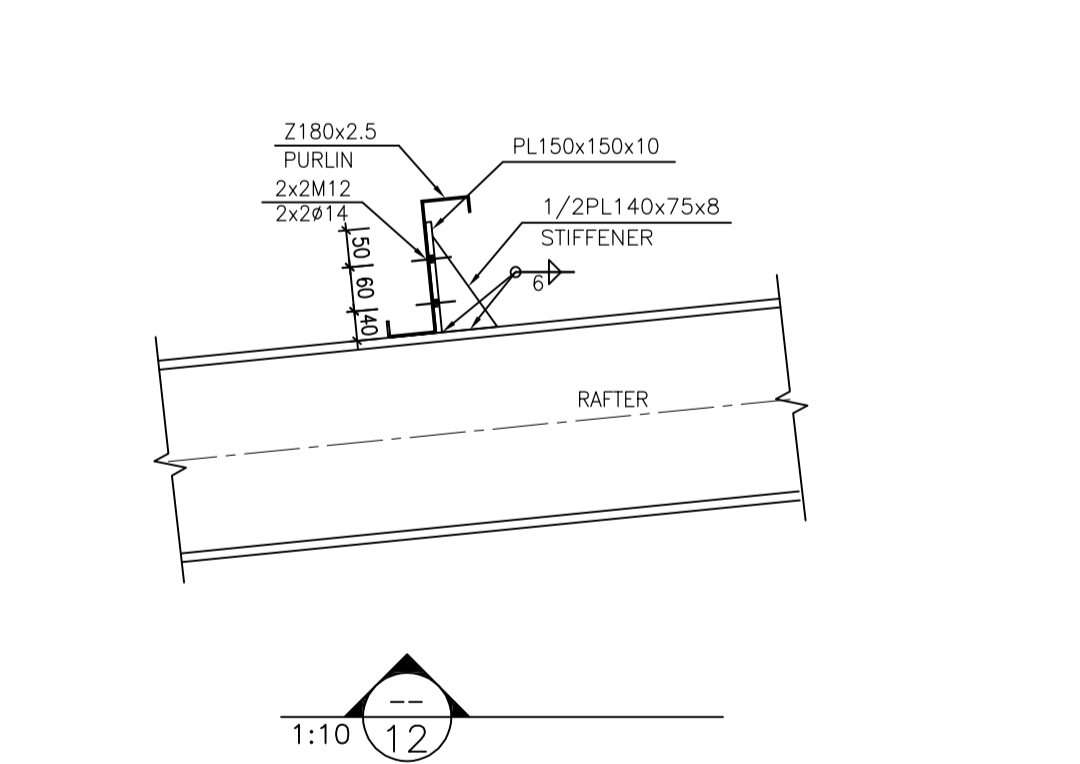
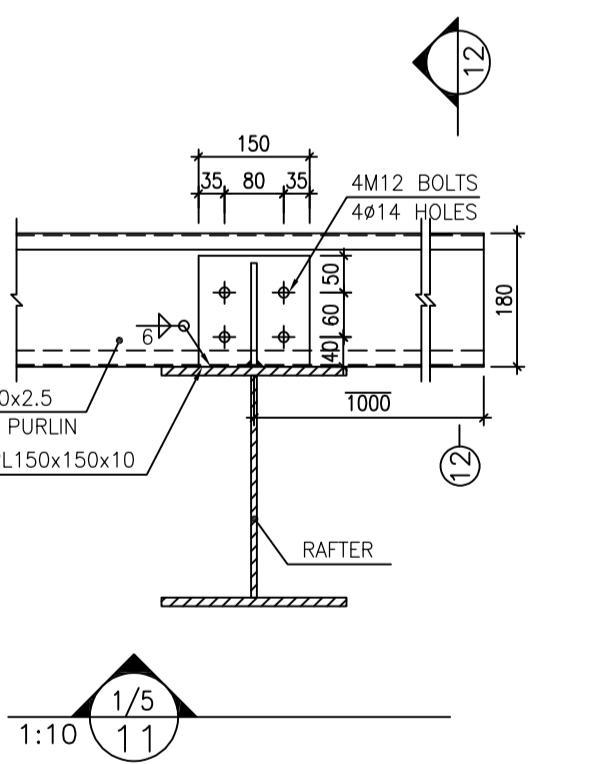
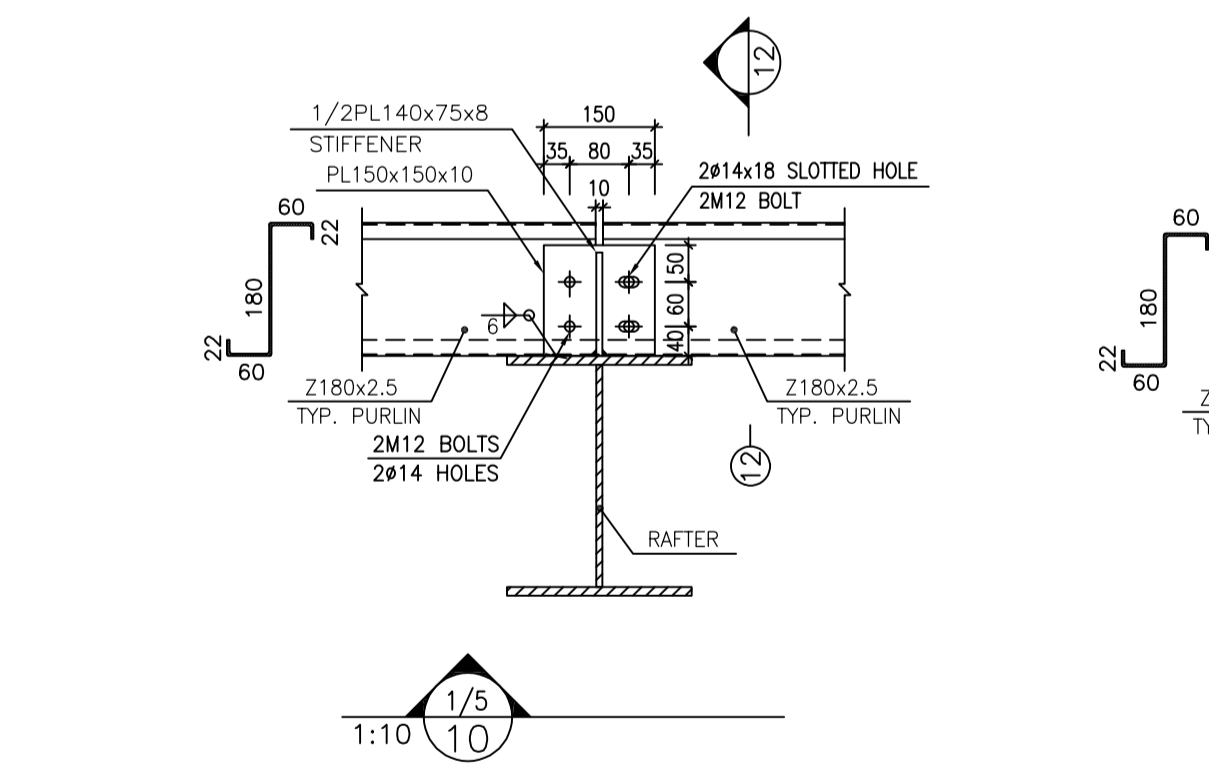
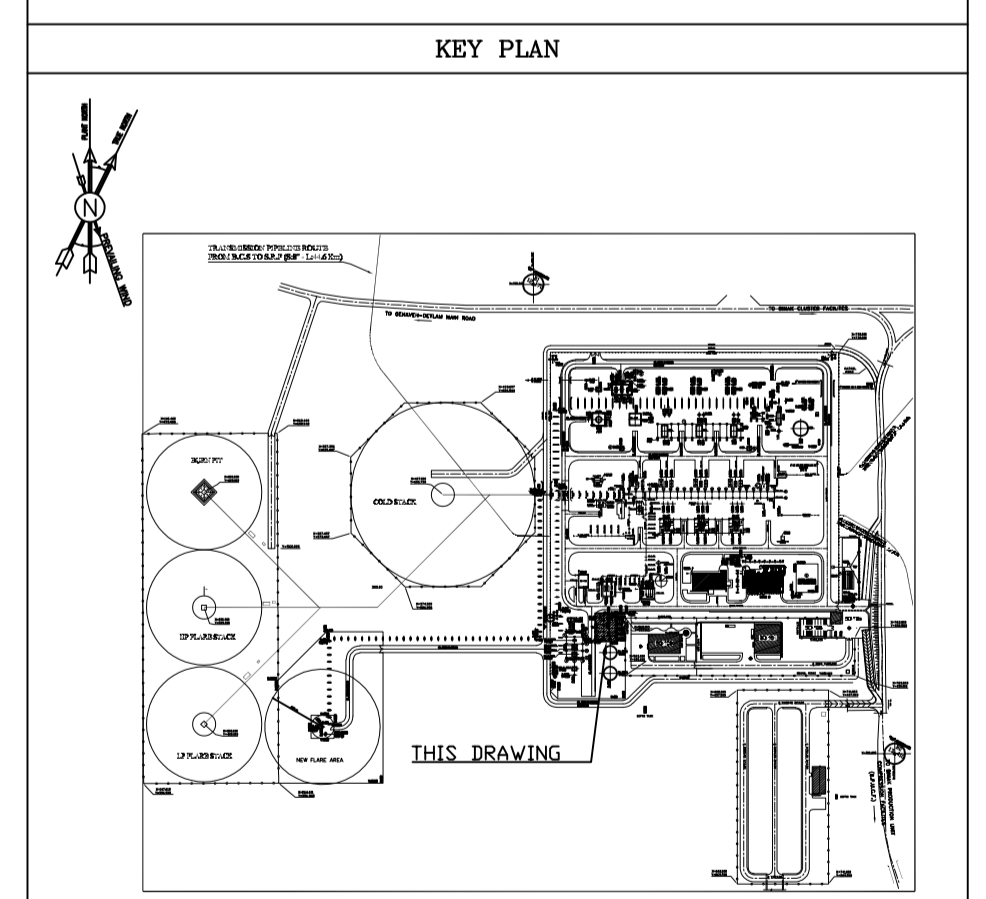
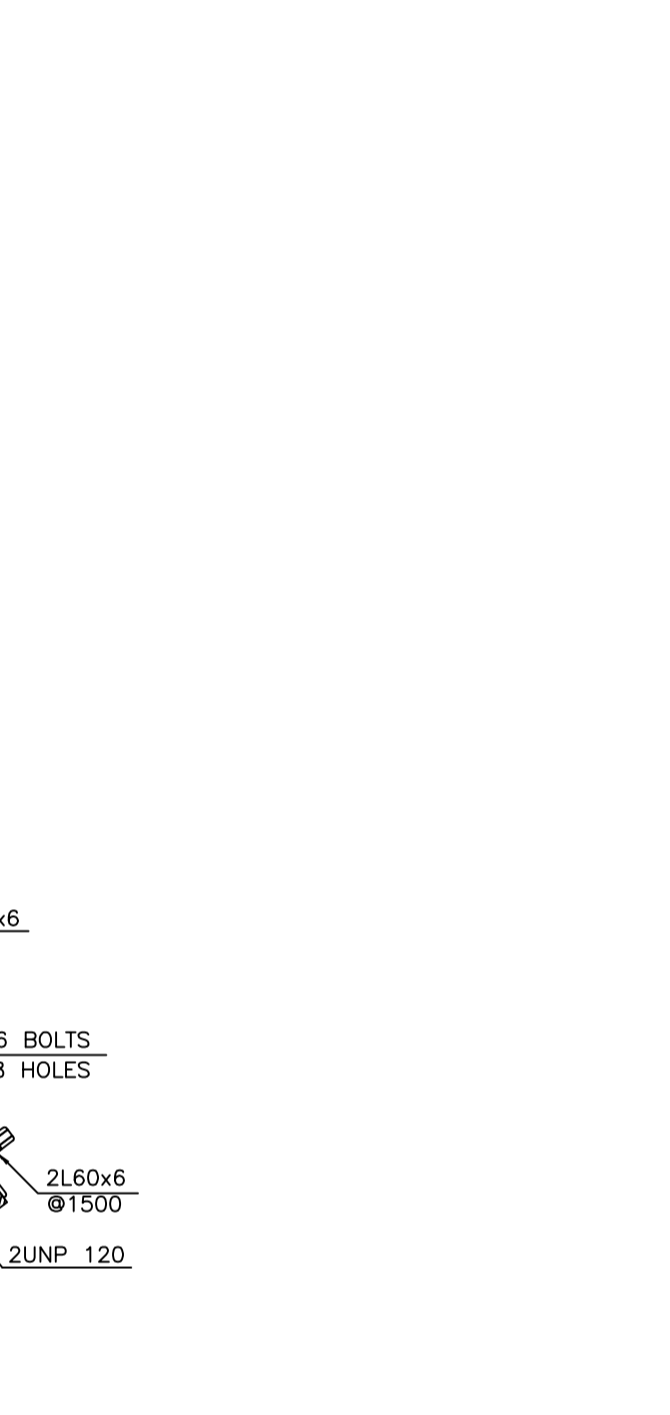
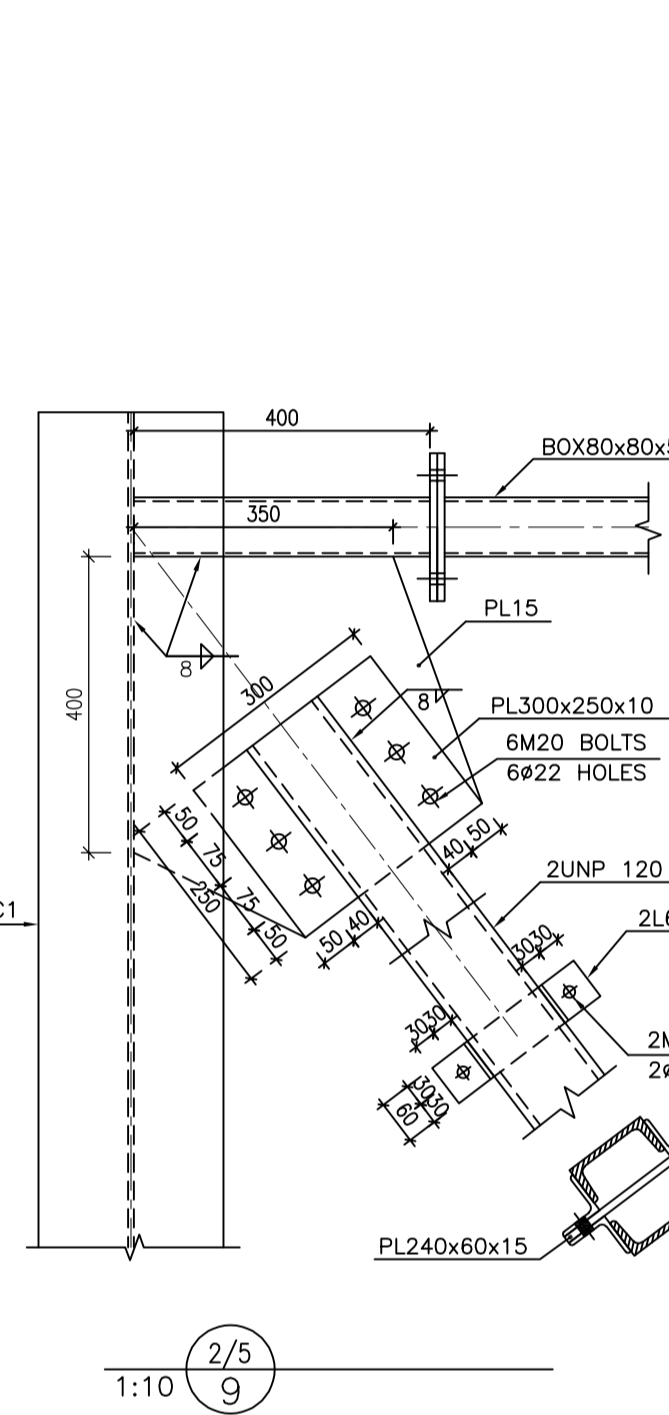
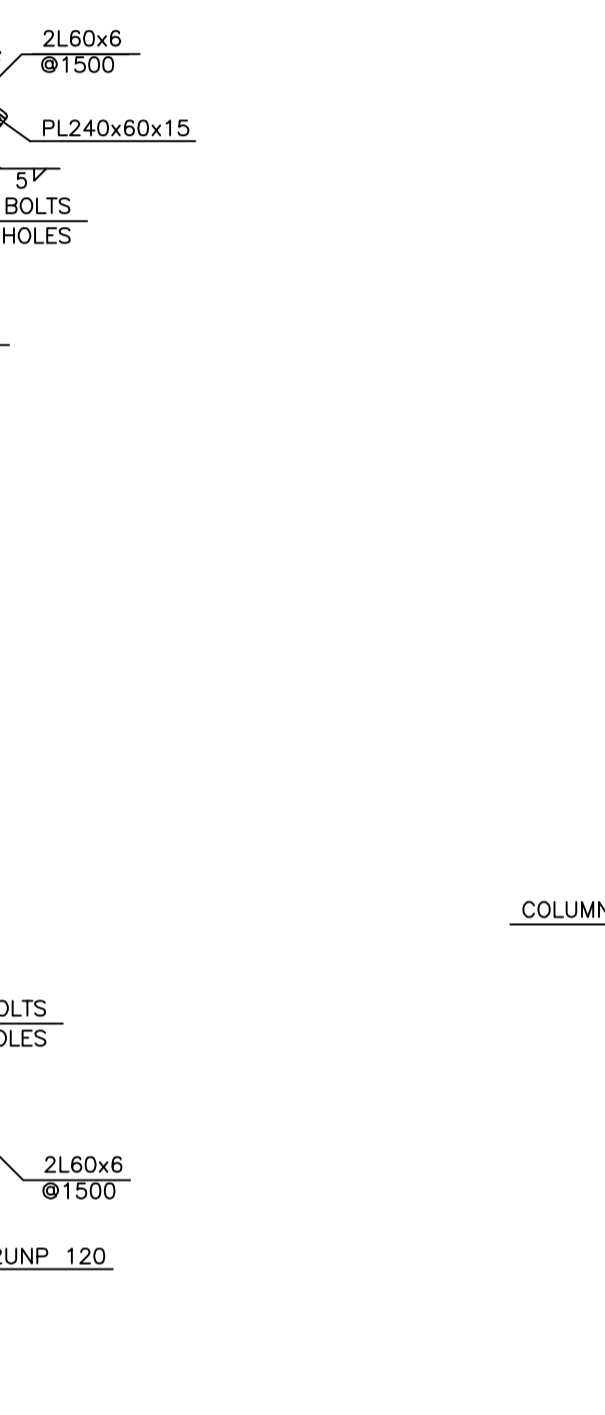
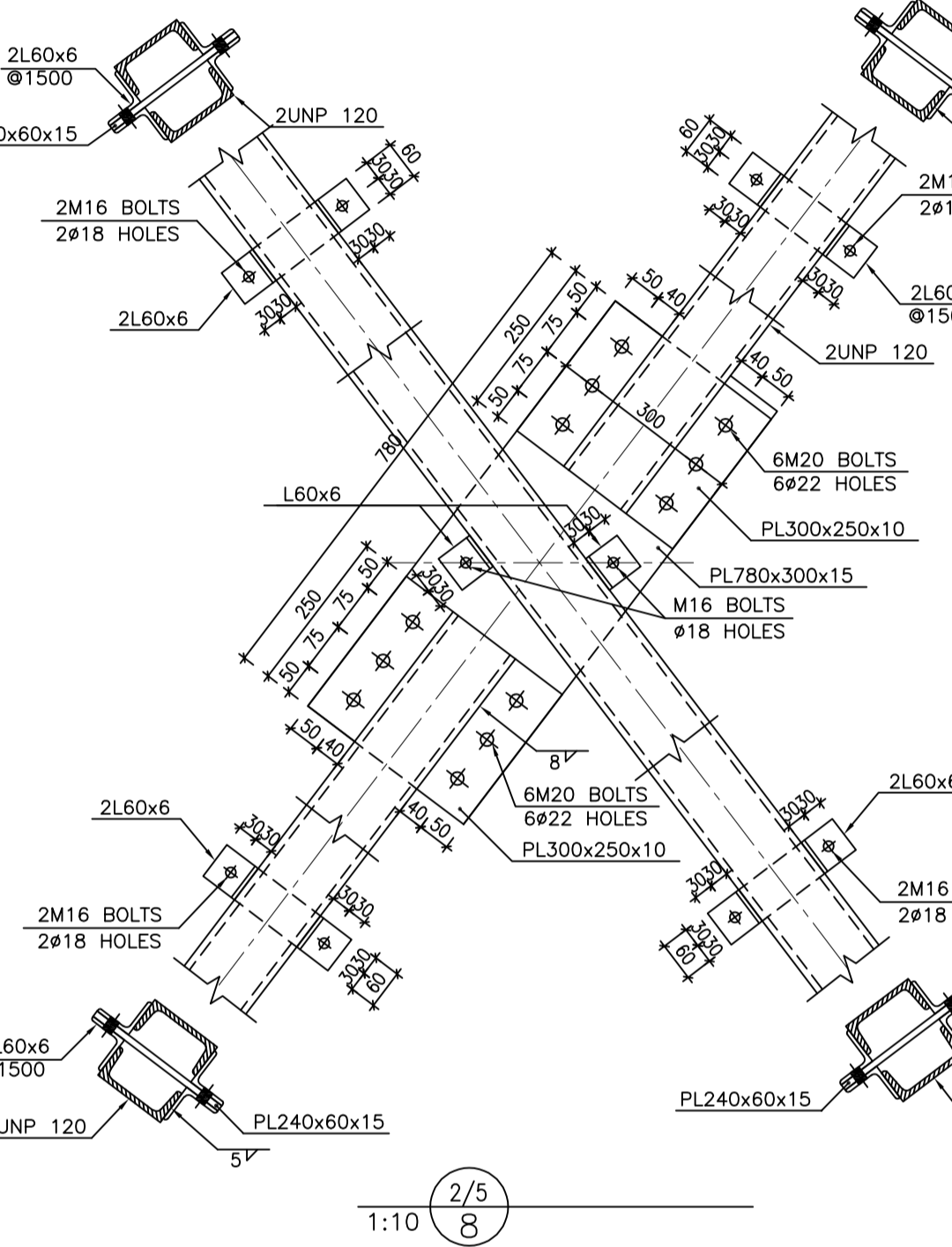
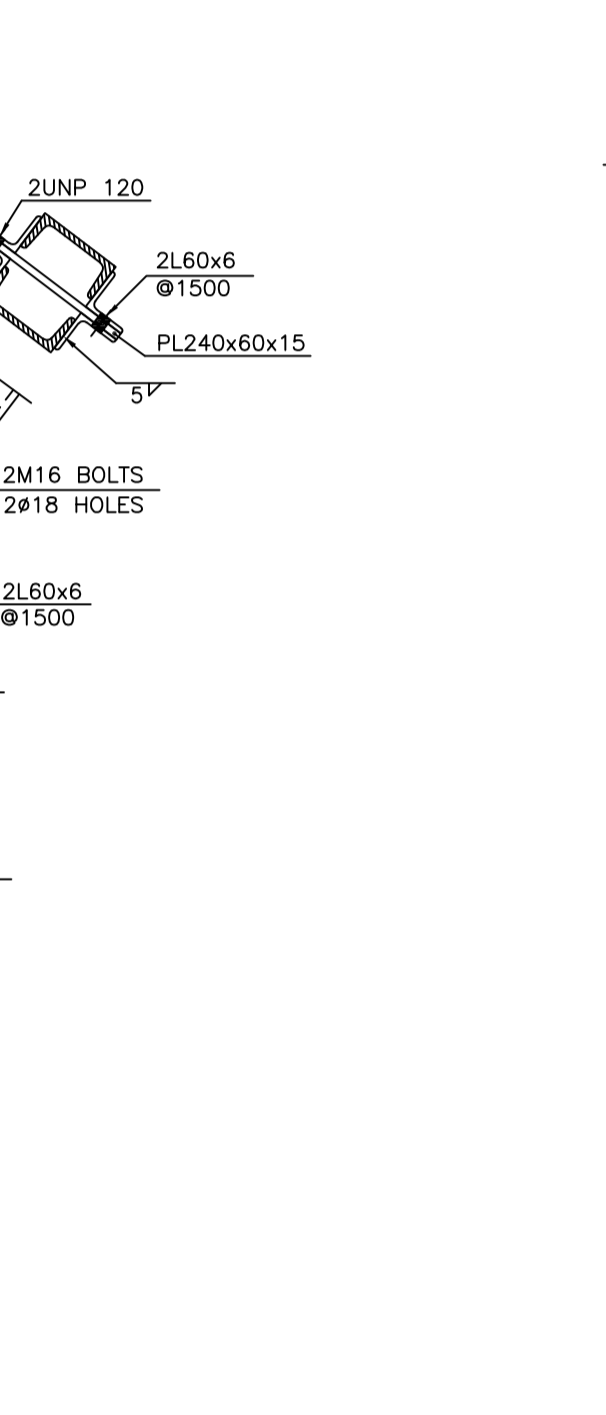
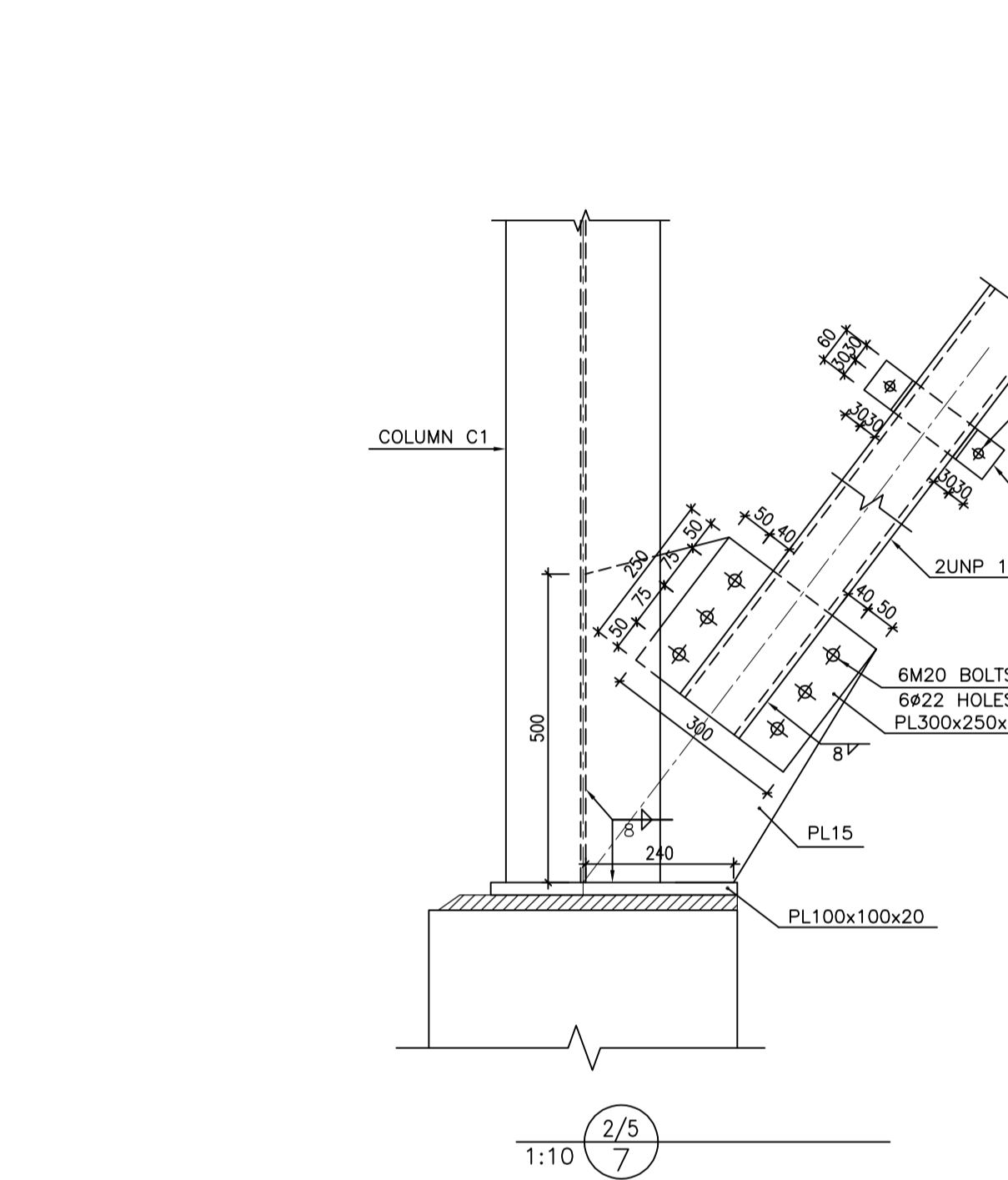
- NOTES**
- 1) ALL ELEVATIONS AND COORDINATES ARE IN "m" AND DIMENSIONS ARE IN "mm" UNLESS OTHERWISE NOTED.
  - 2) ALL DIMENSIONS AND ELEVATIONS SHALL BE CHECKED BY THE CONTRACTOR PRIOR TO CONSTRUCTION.
  - 3) ACCORDING TO THE SPECIFICATION OF CONCRETE WORKS:  
"BK-GNR-PEDCO-000-ST-SP-0001" 28 DAYS CHARACTERISTIC COMPRESSIVE STRENGTH OF MAIN CONCRETE IS 30 MPa (ON CYLINDRICAL SPECIMEN)
  - 4) ACCORDING TO THE SPECIFICATION OF CONCRETE WORKS:  
"BK-GNR-PEDCO-000-ST-SP-0001" 28 DAYS CHARACTERISTIC COMPRESSIVE STRENGTH OF LEAN CONCRETE IS 15 MPa (ON CYLINDRICAL SPECIMEN)
  - 5) STRUCTURAL STEEL SHAPE & PLATES SHALL CONFORM TO S235JR WITH MINIMUM YIELD STRESS OF Fy=24000 kg/cm.
  - 6) ALL BOLTS ARE HIGH STRENGTH BOLTS GRADE 8.8 WITH MINIMUM TENSILE STRENGTH OF Fu=800 MPa.
  - 7) ANCHOR BOLTS SHALL BE ASTM A307 GRADE C.
  - 8) ALL WELDING SHALL BE IN ACCORDANCE WITH THE LATEST EDITION OF STRUCTURAL WELDING CODE, AWS D1.1/D1.1M.
  - 9) TYPE OF WELDING ELECTRODE SHALL BE E70 AND IN ACCORDANCE WITH SPECIFICATION FOR STRUCTURAL STEEL FABRICATION AND ERECTION.
  - 10) FLANGES SHOULD BE CONTINUOUSLY WELDED TO THE WEB.

**LEGEND**

F.G.L. : FINISH GROUND LEVEL		REINFORCED CONCRETE
T.O.G. : TOP OF GROUT		LEAN CONCRETE
T.O.F. : TOP OF FOUNDATION		GROUND
B.O.B.P. : BOTTOM OF BASEPLATE		
T.O.B. : TOP OF BEAM		
T.O.PED. : TOP OF PEDESTAL		
C.O.ST. : CENTER OF STRUT		
T.O.S. : TOP OF STEEL		

**REFERENCE DRAWING**

REFERENCE DRAWING	DRG. No.
CALCULATION NOTE FOR FIRE WATER PUMP SHELTER	BK-GCS-PEDCO-120-ST-CN-0009
FOUNDATION DRAWING FOR FIRE WATER PUMP SHELTER	BK-GCS-PEDCO-120-ST-DW-0065
ARCHITECTURAL DRAWING FOR FIRE WATER PUMP SHELTER	BK-GCS-PEDCO-120-AR-DW-0006
STANDARD DRAWING FOR ANCHOR BOLTS	BK-GNR-PEDCO-000-ST-DW-0002
GENERAL NOTES-STEEL STRUCTURES	BK-GNR-PEDCO-000-ST-DW-0011
SPECIFICATION FOR ERECTION OF STEEL STRUCTURES	BK-GNR-PEDCO-000-ST-SP-0005
SPECIFICATION FOR FABRICATION OF STEEL STRUCTURES	BK-GNR-PEDCO-000-ST-SP-0003
SPECIFICATION FOR STEEL STRUCTURAL WORK	BK-GNR-PEDCO-000-ST-SP-0008
UNIT PLOT PLAN DRAWING	BK-GCS-PEDCO-120-PL-PY-0001
GEOTECHNICAL INVESTIGATION REPORT FOR COMPRESSOR STATION	BK-GCS-PEDCO-120-GT-RT-0001
SPECIFICATION FOR GROUTING	BK-GNR-PEDCO-000-ST-SP-0004
SPECIFICATION FOR PAINTING	BK-GNR-PEDCO-000-PI-SP-0006
STANDARD DRAWING FOR FIREPROOFING	BK-GNR-PEDCO-000-ST-DW-0001



REV.	DESCRIPTION	BY	DATE	BY	DATE
D02	APR.2024	APC	R.BERLOUË	M.FAKHARIAN	S.PARMAKZEPPOUR
D01	NOV.2023	IFA	R.BERLOUË	M.FAKHARIAN	S.PARMAKZEPPOUR
D00	AUG.2023	IFC	R.BERLOUË	M.FAKHARIAN	A.M.MOHSENI
REV.	DATE	P.O.I.S	PREP.	CHK.	APP.

PROJECT NAME: BINAK OILFIELD DEVELOPMENT/SURFACE FACILITIES GAS COMPRESSOR STATION

PROJECT NO.: 971020

EPC CONTRACTOR: HIRGAN ENERGY - DESIGN & INSPECTION COMPANIES

EPD/EPC CONTRACTOR (GC): PETROIRAN DEVELOPMENT COMPANY

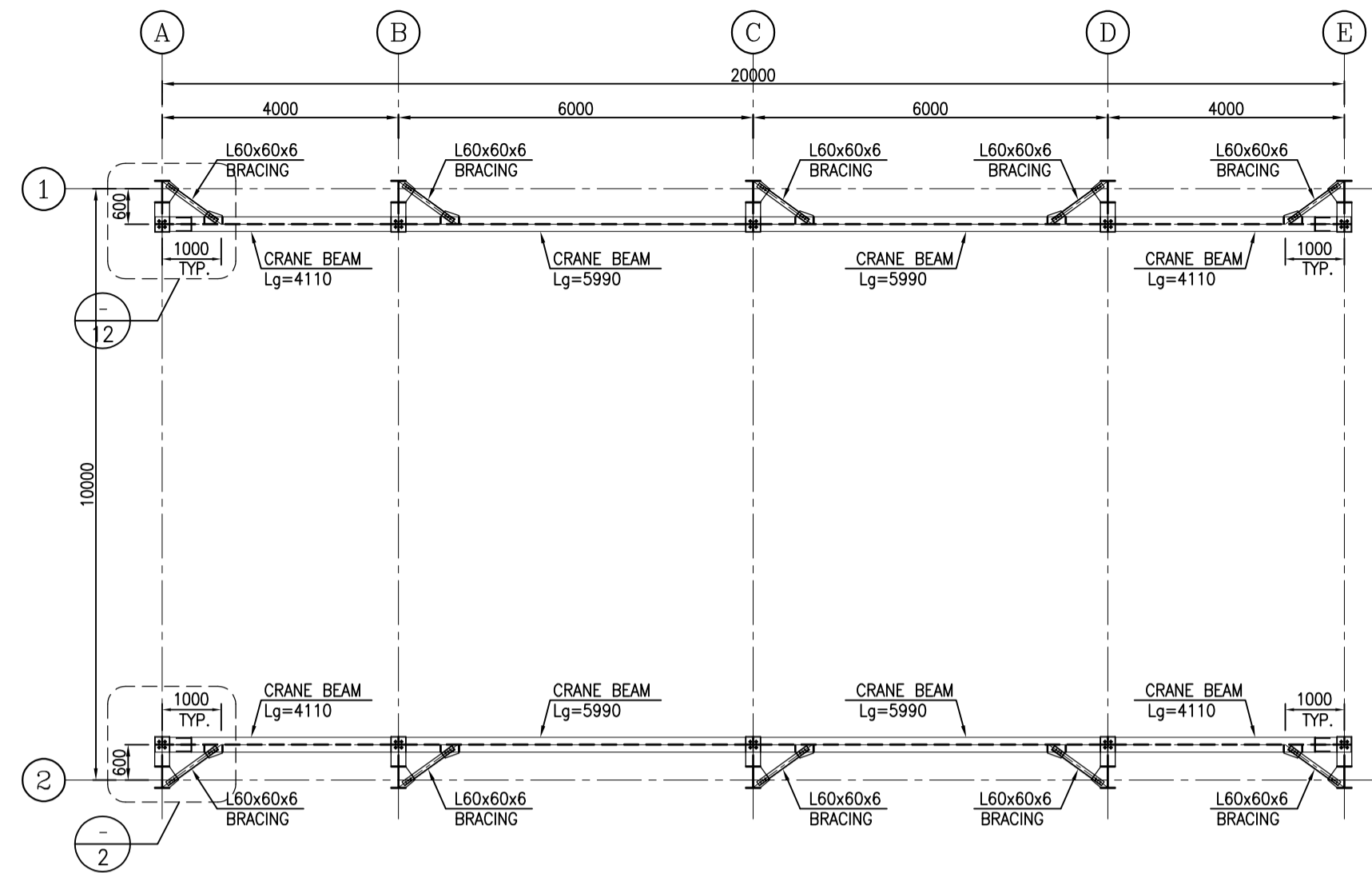
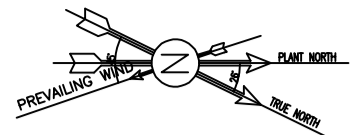
DATE: \_\_\_\_\_ SCALE: \_\_\_\_\_ DRAWING BY: \_\_\_\_\_ CHECKED BY: \_\_\_\_\_ PROJECT ENG: \_\_\_\_\_

DRAWING TITLE: STRUCTURAL DRAWING FOR FIRE WATER PUMP SHELTER

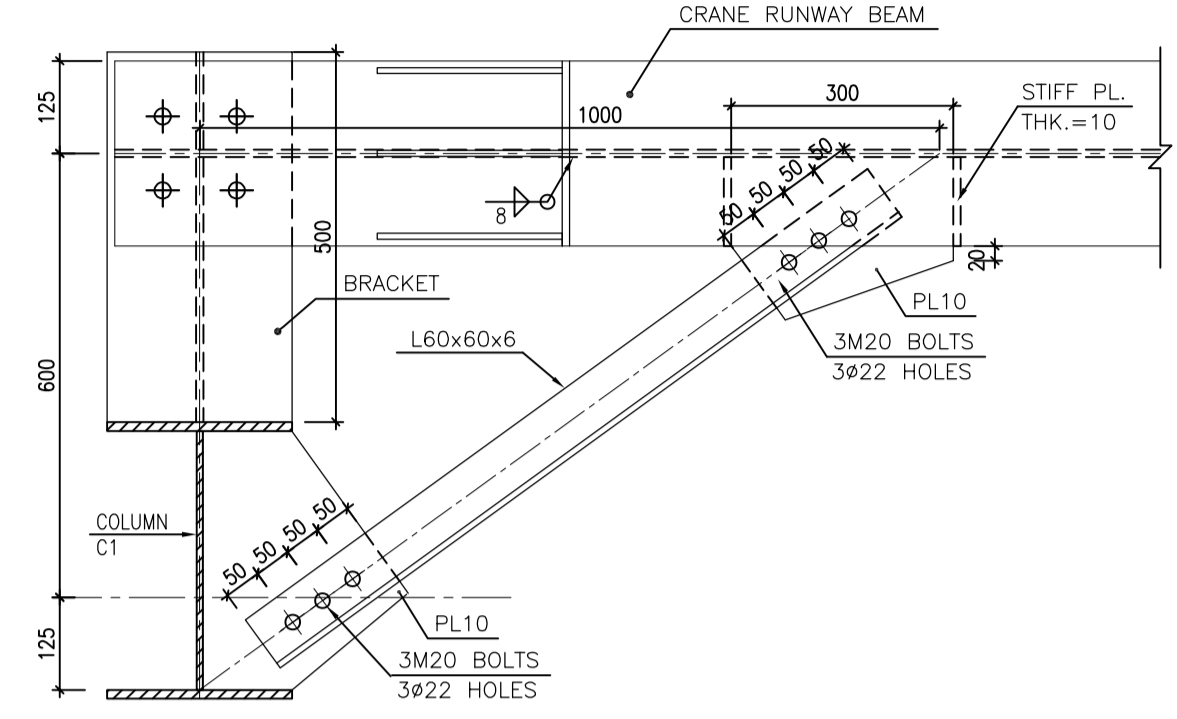
NO CONSTRUCTION PERMITTED UNLESS DRAWING APPROVED

APPROVED FOR CONSTRUCTION: \_\_\_\_\_ BY: \_\_\_\_\_ DATE: \_\_\_\_\_

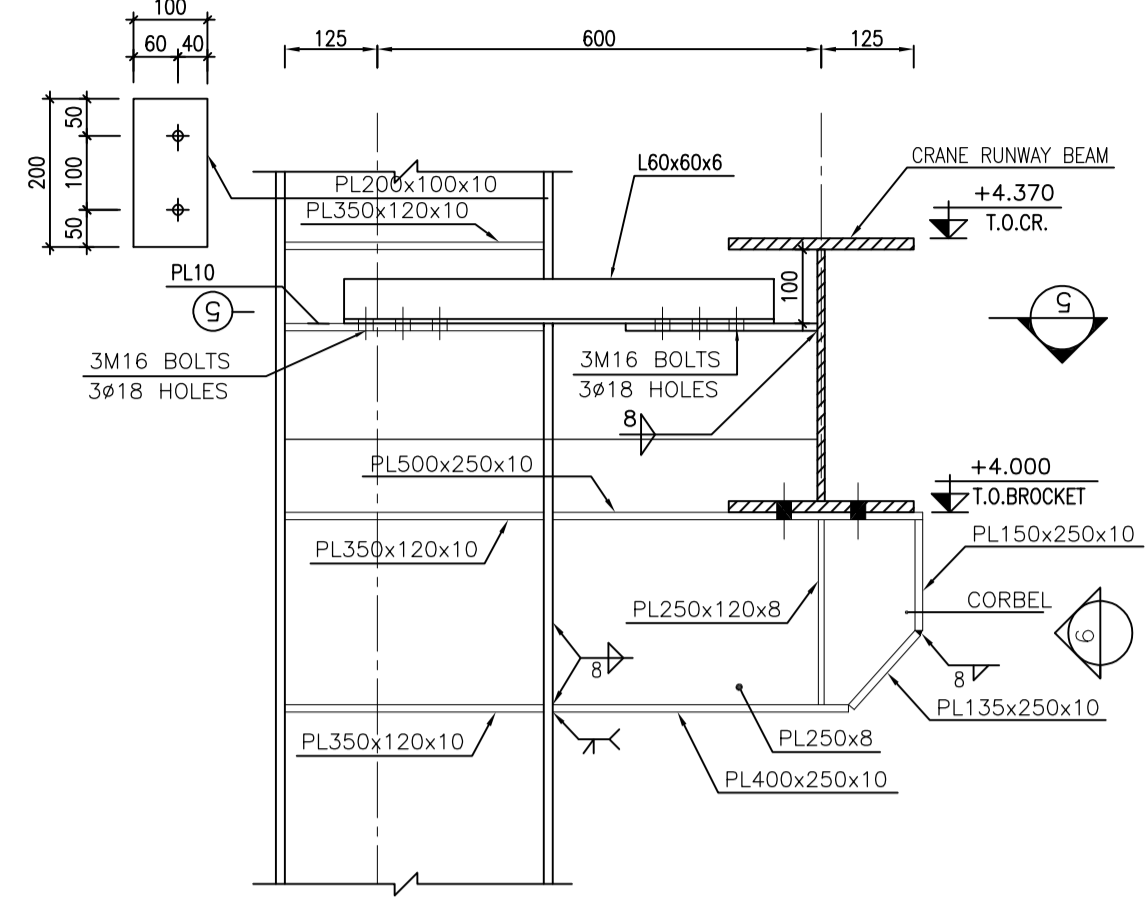
SCALE	SIZE	DRAWING NO.	SHEET NO.	REV.	BUDGET REF.	LOCATION	SIZE	CLASS	SERIAL NO.	SHEET	REVISION
AS SHOWN	A1	BK-GCS-PEDCO-120-ST-DW-0066	4 OF 5	D02	053-073-9184	F	4	M	709203	4	D02



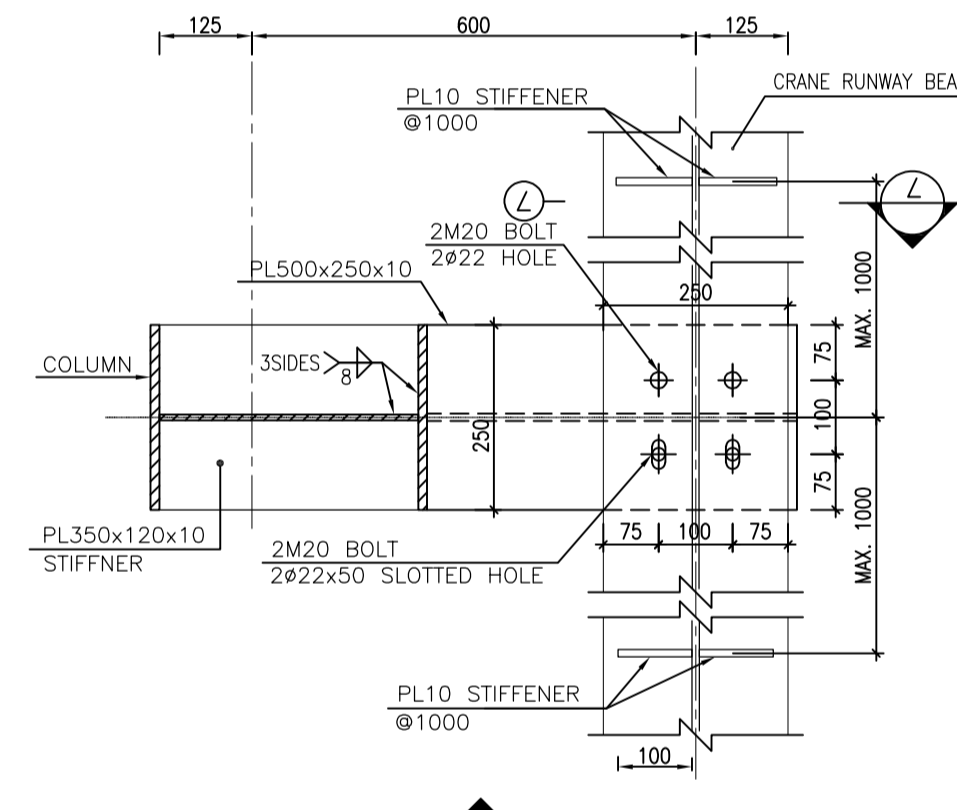
1:100 (1) RUNWAY BEAM LAYOUT PLAN



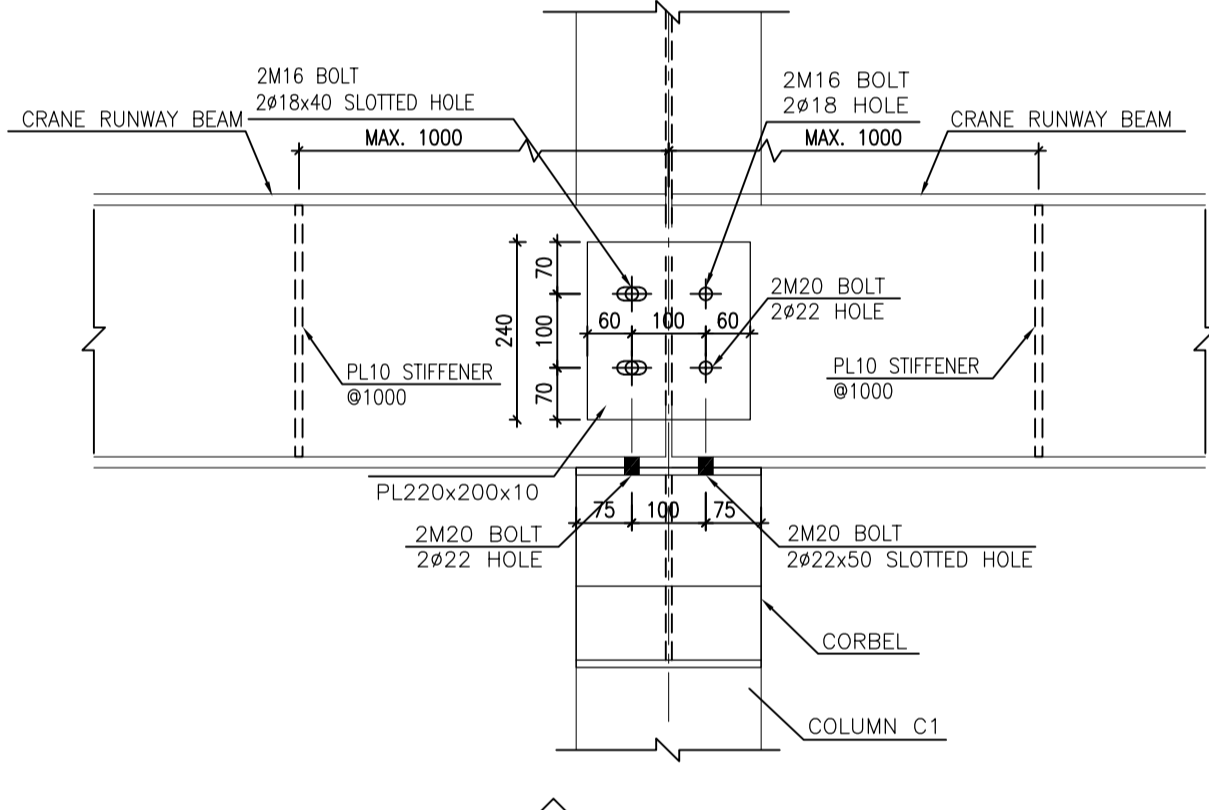
1:10 (2)



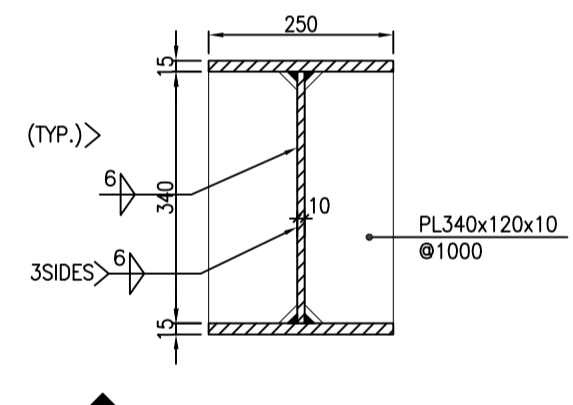
1:10 (2/5) 4



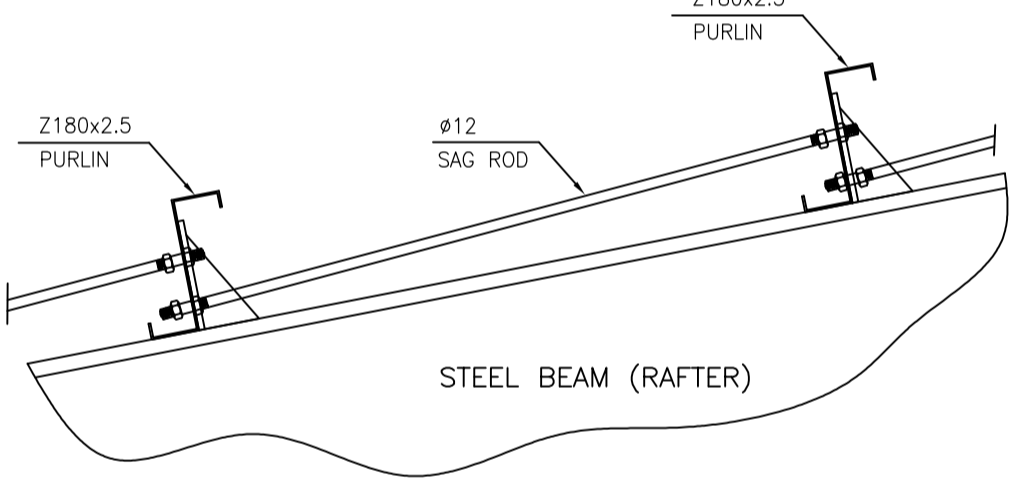
1:10 (5)



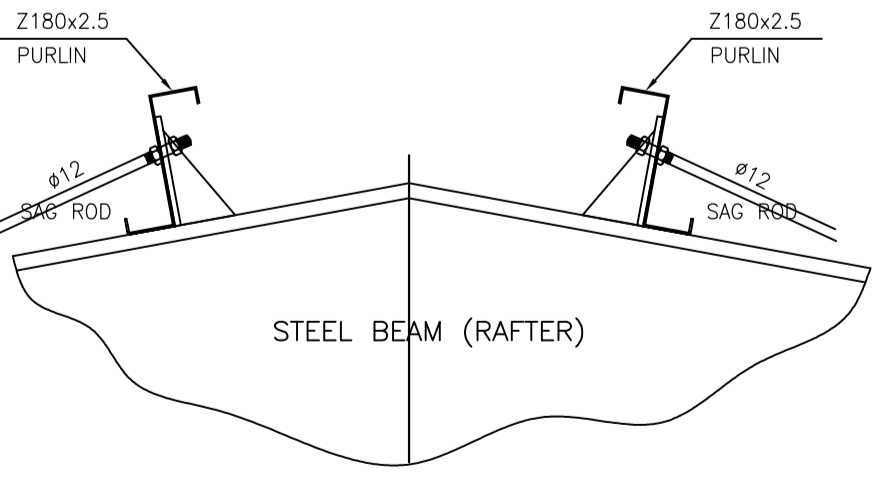
1:10 (6)



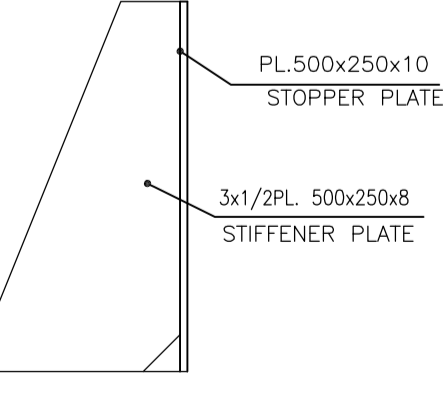
1:10 (7) CRANE RUNWAY BEAM



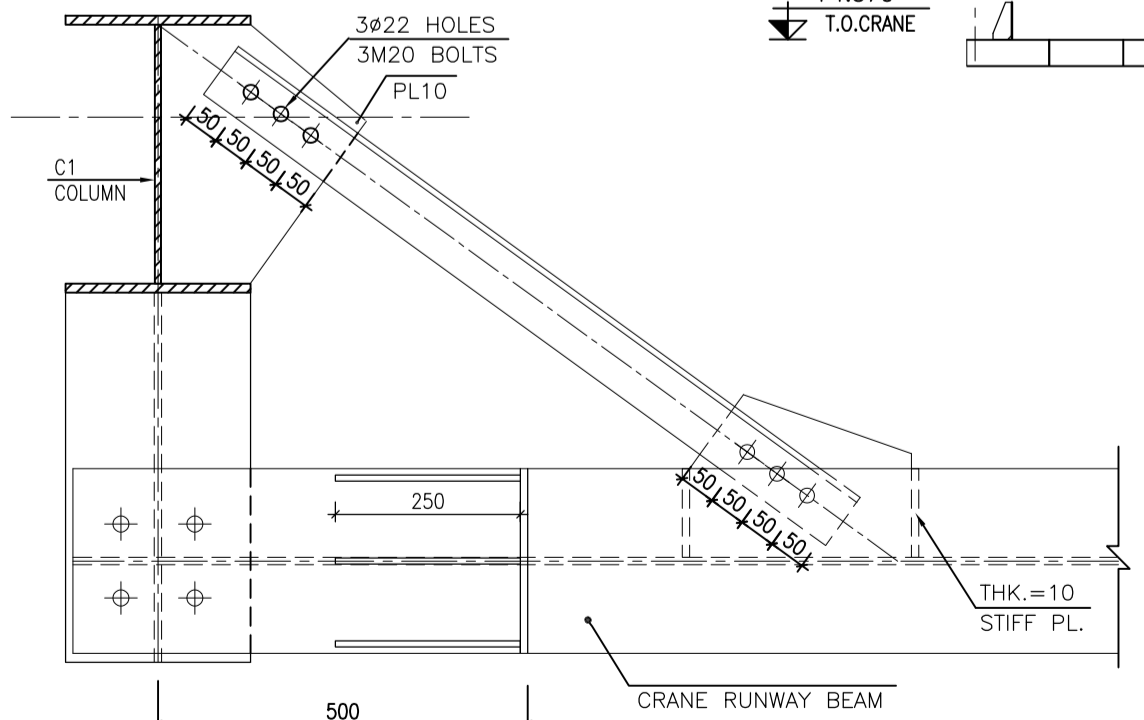
1:10 (2/5) 8 TYPICAL SAGROD DETAIL



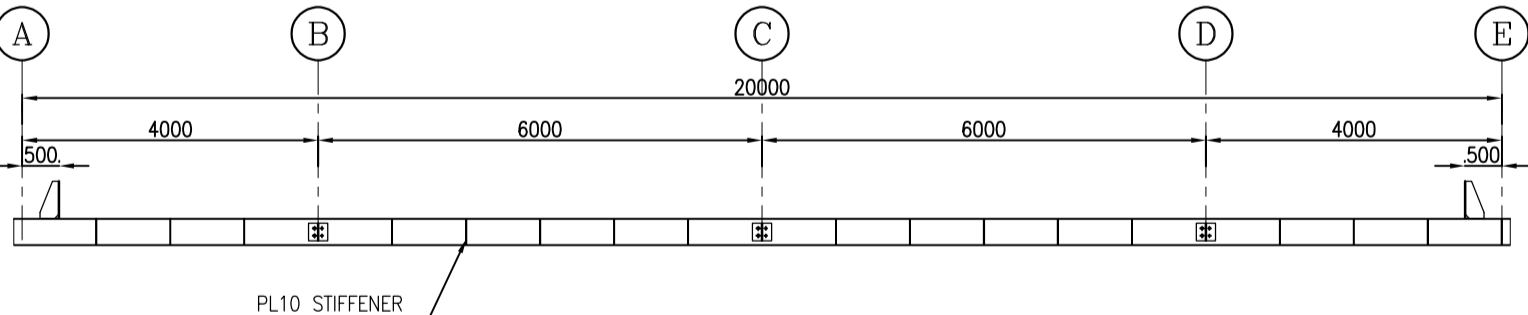
1:10 (2/5) 9 TYPICAL SAGROD DETAIL



1:10 (11) STOPPER DETAIL



1:10 (12)



1:100 (10) RUNWAY BEAM VIEW

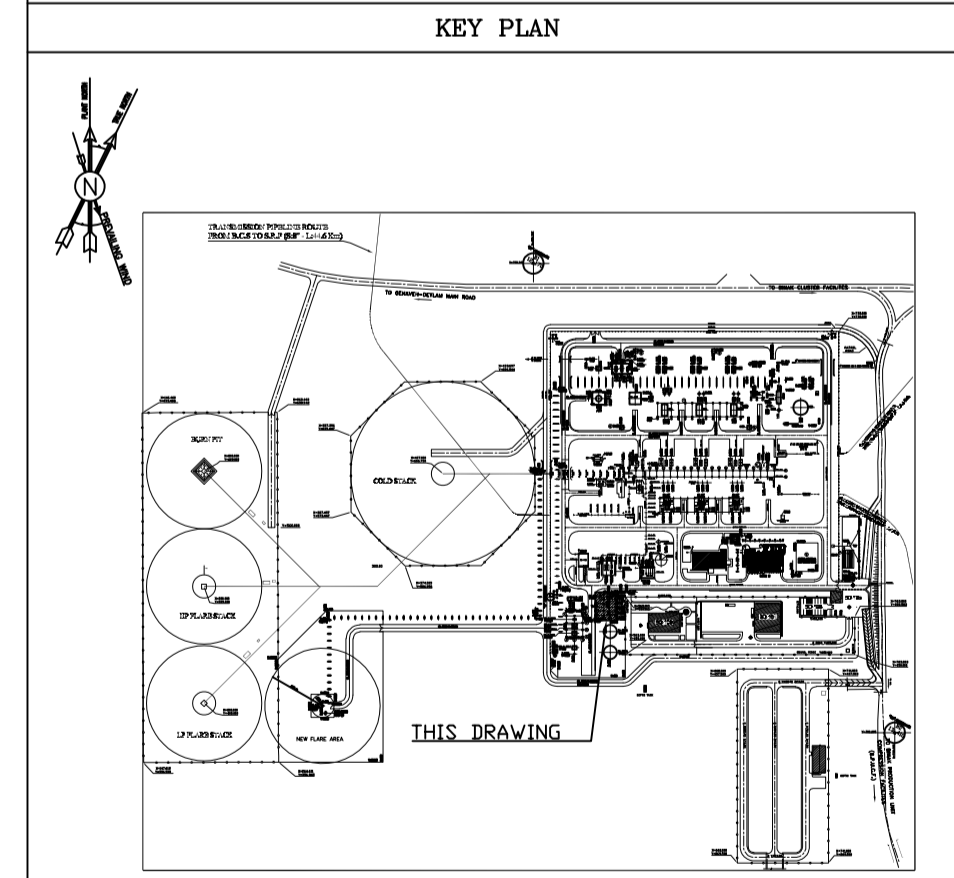
- NOTES**
- 1) ALL ELEVATIONS AND COORDINATES ARE IN "m" AND DIMENSIONS ARE IN "mm" UNLESS OTHERWISE NOTED.
  - 2) ALL DIMENSIONS AND ELEVATIONS SHALL BE CHECKED BY THE CONTRACTOR PRIOR TO CONSTRUCTION.
  - 3) ACCORDING TO THE SPECIFICATION OF CONCRETE WORKS:  
"BK-GNRL-PEDCO-000-ST-SP-0001" 28 DAYS CHARACTERISTIC COMPRESSIVE STRENGTH OF MAIN CONCRETE IS 30 MPa (ON CYLINDRICAL SPECIMEN)
  - 4) ACCORDING TO THE SPECIFICATION OF CONCRETE WORKS:  
"BK-GNRL-PEDCO-000-ST-SP-0001" 28 DAYS CHARACTERISTIC COMPRESSIVE STRENGTH OF LEAN CONCRETE IS 15 MPa (ON CYLINDRICAL SPECIMEN)
  - 5) STRUCTURAL STEEL SHAPE & PLATES SHALL CONFORM TO S235JR WITH MINIMUM YIELD STRESS OF Fy=2400 kg/cm.
  - 6) ALL BOLTS ARE HIGH STRENGTH BOLTS GRADE 8.8 WITH MINIMUM TENSILE STRENGTH OF Fu=800 MPa.
  - 7) ANCHOR BOLTS SHALL BE ASTM A307 GRADE C.
  - 8) ALL WELDING SHALL BE IN ACCORDANCE WITH THE LATEST EDITION OF STRUCTURAL WELDING CODE, AWS D1.1/D1.1M.
  - 9) TYPE OF WELDING ELECTRODE SHALL BE E70 AND IN ACCORDANCE WITH SPECIFICATION FOR STRUCTURAL STEEL FABRICATION AND ERECTION.
  - 10) FLANGES SHOULD BE CONTINUOUSLY WELDED TO THE WEB.

**LEGEND**

F.G.L. : FINISH GROUND LEVEL		REINFORCED CONCRETE
T.O.G. : TOP OF GROUT		LEAN CONCRETE
T.O.F. : TOP OF FOUNDATION		GROUND
B.O.B.P. : BOTTOM OF BASEPLATE		
T.O.B. : TOP OF BEAM		
T.O.PED. : TOP OF PEDESTAL		
C.O.ST. : CENTER OF STRUT		
T.O.S. : TOP OF STEEL		

**REFERENCE DRAWING**

REFERENCE DRAWING	DRG. No.
CALCULATION NOTE FOR FIRE WATER PUMP SHELTER	BK-GCS-PEDCO-120-ST-CN-0009
FOUNDATION DRAWING FOR FIRE WATER PUMP SHELTER	BK-GCS-PEDCO-120-ST-DW-0065
ARCHITECTURAL DRAWING FOR FIRE WATER PUMP SHELTER	BK-GCS-PEDCO-120-AR-DW-0066
STANDARD DRAWING FOR ANCHOR BOLTS	BK-GNRL-PEDCO-000-ST-DW-0002
GENERAL NOTES-STEEL STRUCTURES	BK-GNRL-PEDCO-000-ST-DW-0011
SPECIFICATION FOR ERECTION OF STEEL STRUCTURES	BK-GNRL-PEDCO-000-ST-SP-0005
SPECIFICATION FOR FABRICATION OF STEEL STRUCTURES	BK-GNRL-PEDCO-000-ST-SP-0003
SPECIFICATION FOR STEEL STRUCTURAL WORK	BK-GNRL-PEDCO-000-ST-SP-0008
UNIT PLOT PLAN DRAWING	BK-GCS-PEDCO-120-PL-PY-0001
GEOTECHNICAL INVESTIGATION REPORT FOR COMPRESSOR STATION	BK-GCS-PEDCO-120-GT-RT-0001
SPECIFICATION FOR GROUTING	BK-GNRL-PEDCO-000-ST-SP-0004
SPECIFICATION FOR PAINTING	BK-GNRL-PEDCO-000-SP-0006
STANDARD DRAWING FOR FIREPROOFING	BK-GNRL-PEDCO-000-ST-DW-0001



REV.	DESCRIPTION	BY	DATE	BY	DATE					
DO2	APR.2024	APC	R.BERLOUIE	M.PAKHARIAN	S.PARMAKZPOUR	**	**	**	**	**
DO1	NOV.2023	IFA	R.BERLOUIE	M.PAKHARIAN	S.PARMAKZPOUR	**	**	**	**	**
DO0	AUG.2023	IFC	R.BERLOUIE	M.PAKHARIAN	A.M.MOHSSENI	**	**	**	**	**

PROJECT NAME: BINAK OILFIELD DEVELOPMENT/SURFACE FACILITIES GAS COMPRESSOR STATION

PROJECT NO.: 971020

EPC CONTRACTOR: HIRGAN ENERGY - DESIGN & INSPECTION COMPANIES

EPD/EPC CONTRACTOR (GC): PETROIRAN DEVELOPMENT COMPANY

DRAWING TITLE: STRUCTURAL DRAWING FOR FIRE WATER PUMP SHELTER

SCALE	SIZE	DRAWING NO.	SHEET NO.	REV.
AS SHOWN	A1	BK-GCS-PEDCO-120-ST-DW-0066	5 OF 5	DO2

اسم و کلیه نسخ این نقشه و حق اقتباس متعلق به شرکت ملی مناطق نفت خیز جنوب میباشد.

THE ORIGINAL AND ALL COPIES OF THIS DRAWING TOGETHER WITH THE COPYRIGHT THEREIN ARE THE SOLE PROPERTY OF N.I.S.O.C./ PIELDS

**BINAK OILFIELD DEVELOPMENT SURFACE FACILITIES GAS COMPRESSOR STATION**

DATE	SCALE	DRAWING BY	CHECKED BY	PROJECT ENG.

NO CONSTRUCTION PERMITTED UNLESS DRAWING APPROVED

APPROVED FOR CONSTRUCTION	BY:	DATE:

BUDGET REF.	LOCATION	SIZE	CLASS	SERIAL NO.	SHEET	REVISION
053-073-9184	F	4	M	709203	5	DO2