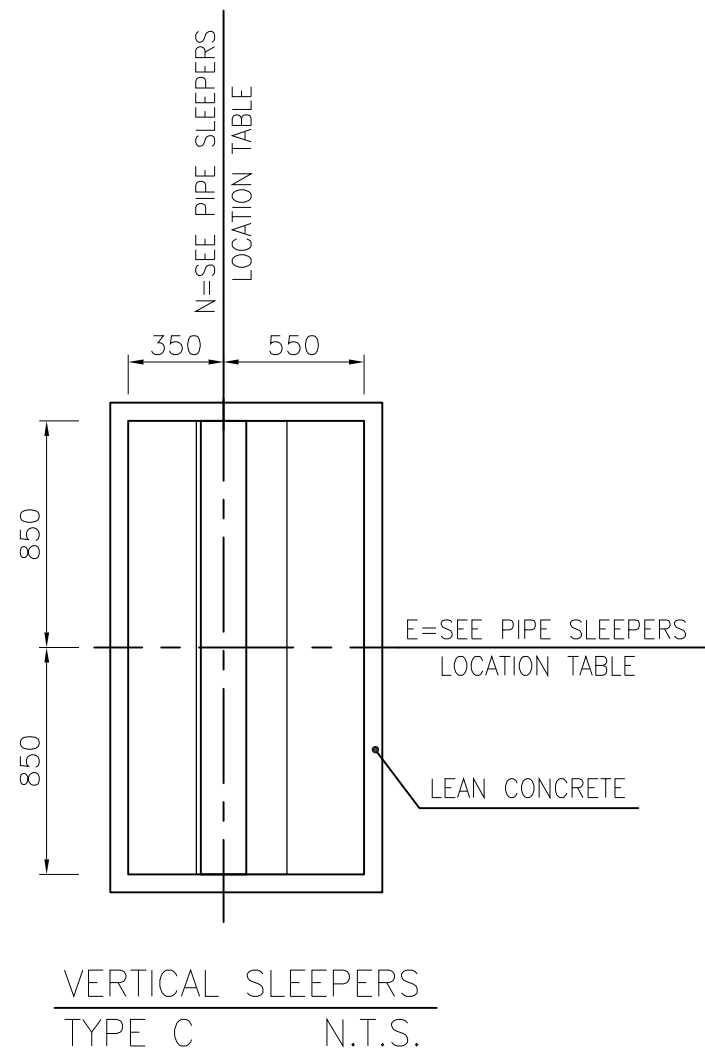
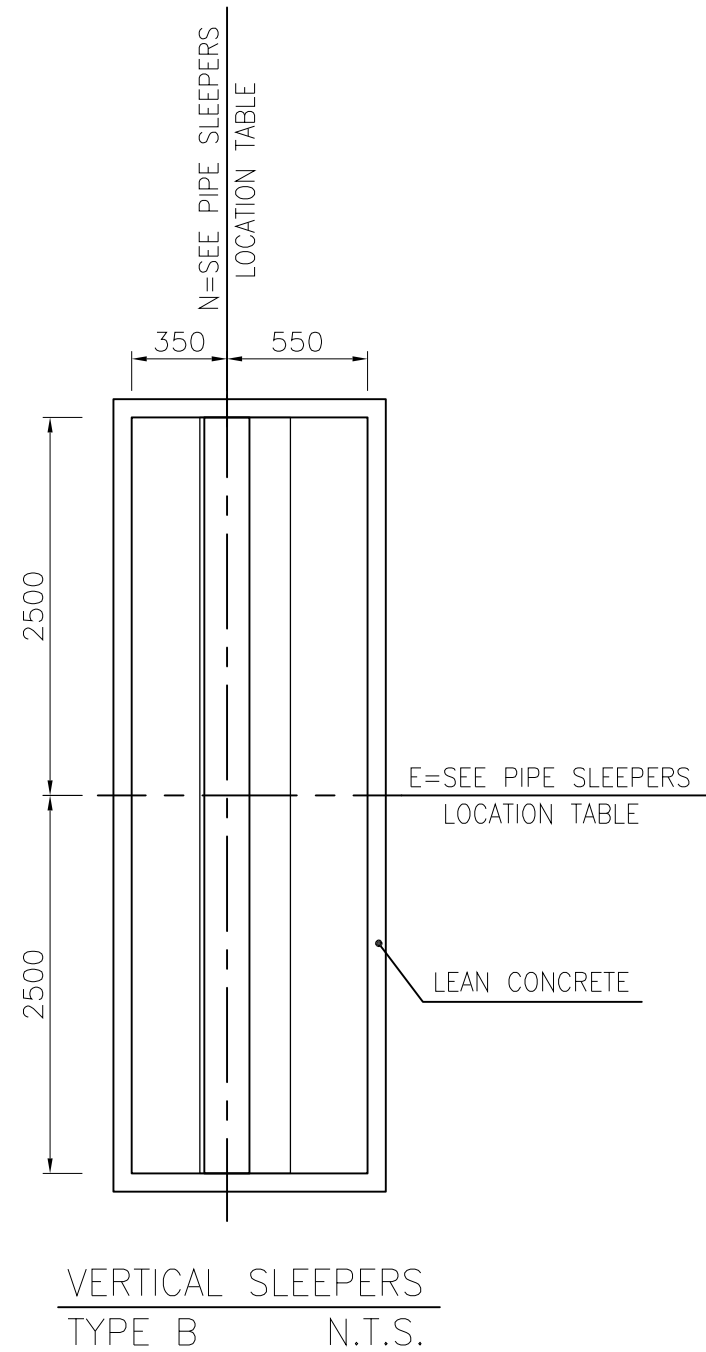
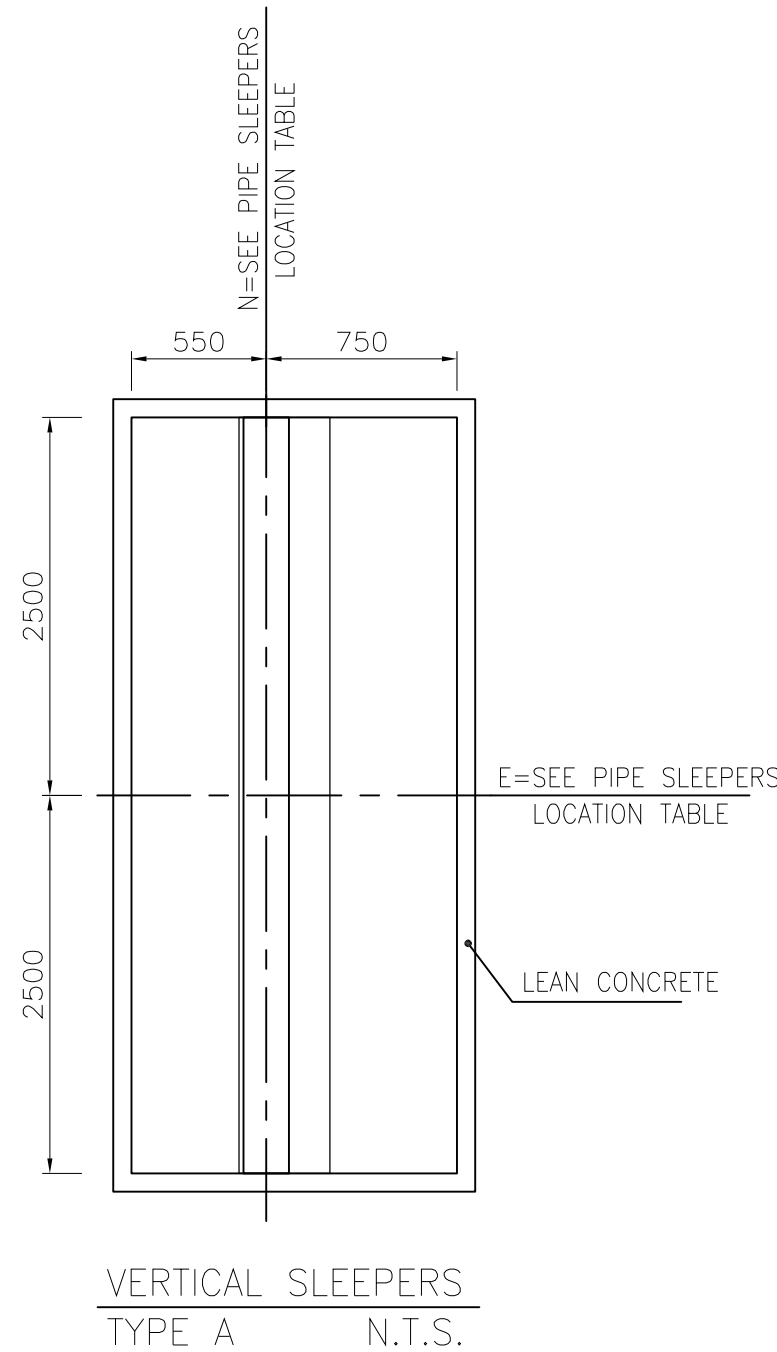




1:400
1
KEY PLAN FORMWORK

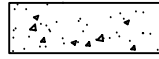
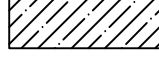

PIPE SLEEPERS LOCATION TABLE				
ITEM	TYPE	COORDINATES		T.O.PED.
		E (m)	N (m)	
P.S.-01	B	693500	686490	+0.50
P.S.-02	B	689000	686490	+0.50
P.S.-03	A	683000	686490	+0.50
P.S.-04	B	677000	686490	+0.50
P.S.-05	B	671000	686490	+0.50
P.S.-06	A	665000	686490	+0.50
P.S.-07	B	659000	686490	+0.50
P.S.-08	A	653000	686490	+0.50
P.S.-09	A	647000	686490	+0.50
P.S.-10	B	641000	686490	+0.50
P.S.-11	B	635000	686490	+0.50
P.S.-12	B	629000	686490	+0.50
P.S.-13	A	623000	686490	+0.50
P.S.-14	B	617000	686490	+0.50
P.S.-15	B	611000	686490	+0.50
P.S.-16	A	605000	686490	+0.50
P.S.-17	A	599000	686490	+0.50
P.S.-18	A	593000	686490	+0.50
P.S.-19	B	587000	686490	+0.50

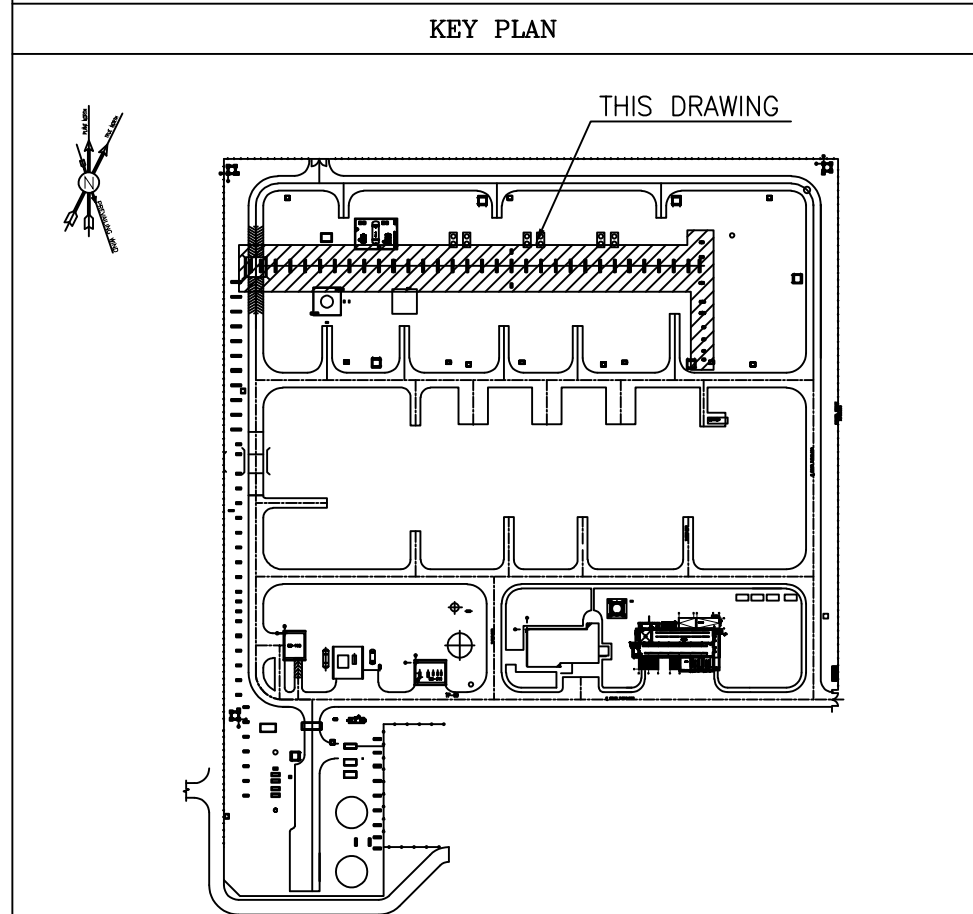
PIPE SLEEPERS LOCATION TABLE				
ITEM	TYPE	COORDINATES		T.O.PED.
		E (m)	N (m)	
P.S.-20	B	581000	686490	+0.50
P.S.-21	B	575000	686490	+0.50
P.S.-22	A	569000	686490	+0.50
P.S.-23	B	563000	686490	+0.50
P.S.-24	A	557000	686490	+0.50
P.S.-25	B	551000	686490	+0.50
P.S.-26	B	545000	686490	+0.50
P.S.-27	A	539000	686490	+0.50
P.S.-28	B	533000	686490	+0.50
P.S.-29	B	527000	686490	+0.50
P.S.-30	B	521000	686490	+0.50
P.S.-31	B	515000	686490	+0.50
P.S.-32	B	510000	686490	+0.50
P.S.-33	C	617000	678571	+0.50




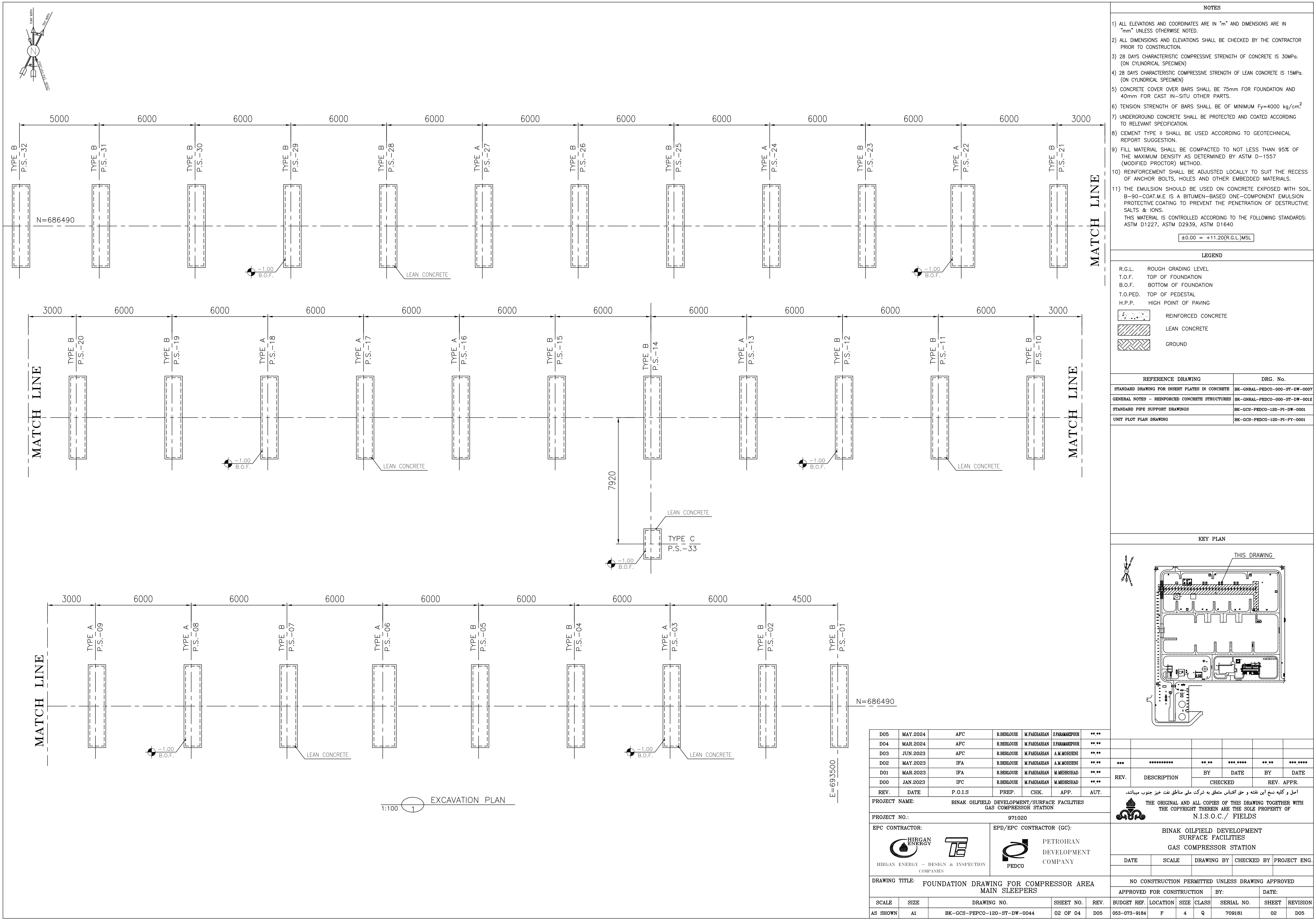
D05	MAY.2024	APC	R.BERLOUBE	M.FAKHARIAN	S.PARAMAKPOUR	***
D04	MAR.2024	APC	R.BERLOUBE	M.FAKHARIAN	S.PARAMAKPOUR	**
D03	JUN.2023	APC	R.BERLOUBE	M.FAKHARIAN	A.M.MOHSSENI	**
D02	MAY.2023	IFA	R.BERLOUBE	M.FAKHARIAN	A.M.MOHSSENI	**
D01	MAR.2023	IFA	R.BERLOUBE	M.FAKHARIAN	M.MEHRSHAD	**
D00	JAN.2023	IFC	R.BERLOUBE	M.FAKHARIAN	M.MEHRSHAD	**
REV.	DATE	P.O.I.S	PREP.	CHK.	APP.	AUT.
PROJECT NAME: BINAK OILFIELD DEVELOPMENT/SURFACE FACILITIES GAS COMPRESSOR STATION						
PROJECT NO.:			971020			
EPC CONTRACTOR:			EPD/EPC CONTRACTOR (GC):			
 HIRGAN ENERGY - DESIGN & INSPECTION COMPANIES			 PETROIRAN DEVELOPMENT COMPANY			
DRAWING TITLE: FOUNDATION DRAWING FOR COMPRESSOR AREA MAIN SLEEPERS						
SCALE	SIZE	DRAWING NO.			SHEET NO.	REV.
AS SHOWN	A1	BK-GCS-PEPCO-120-ST-DW-0044			01 OF 06	D05

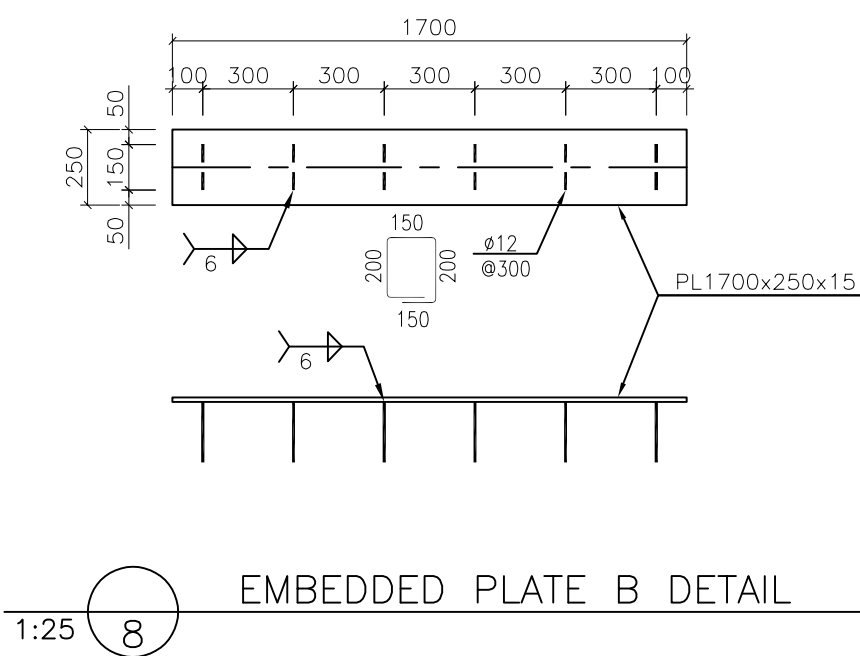
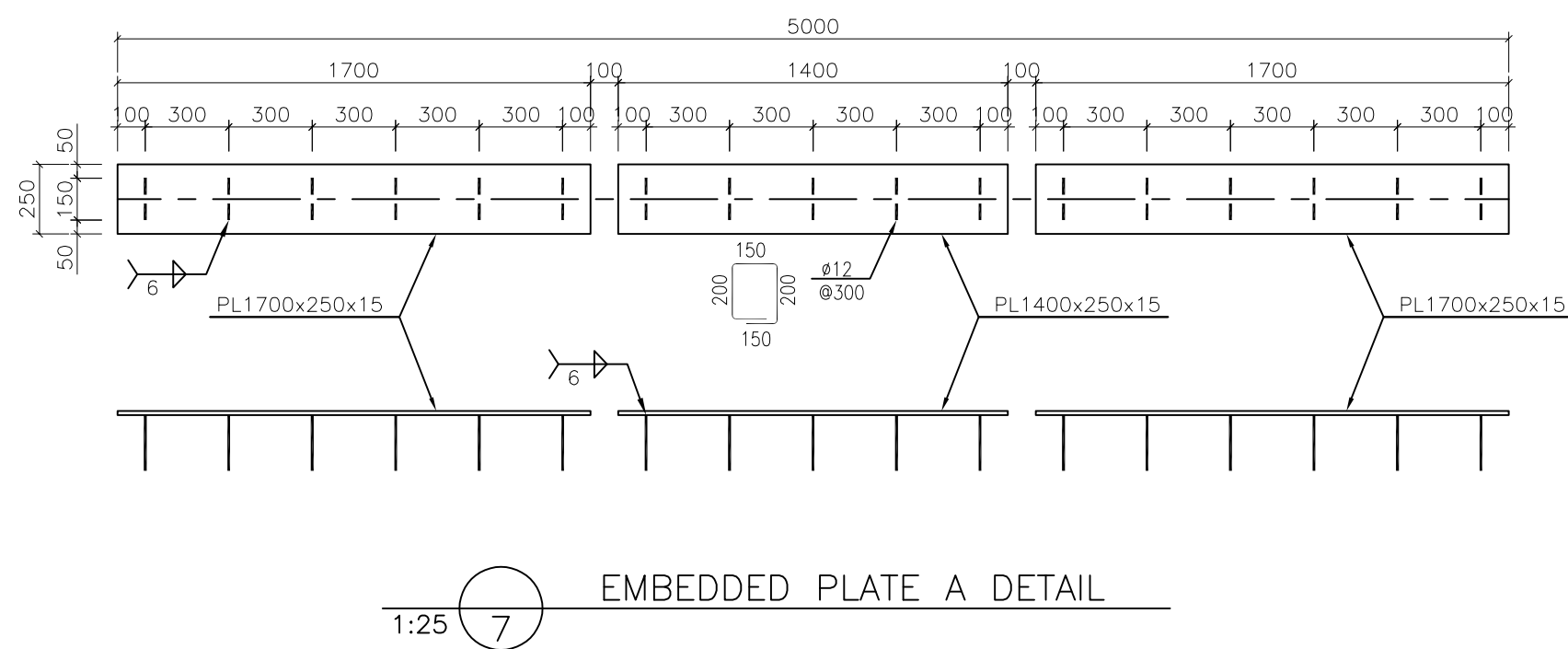
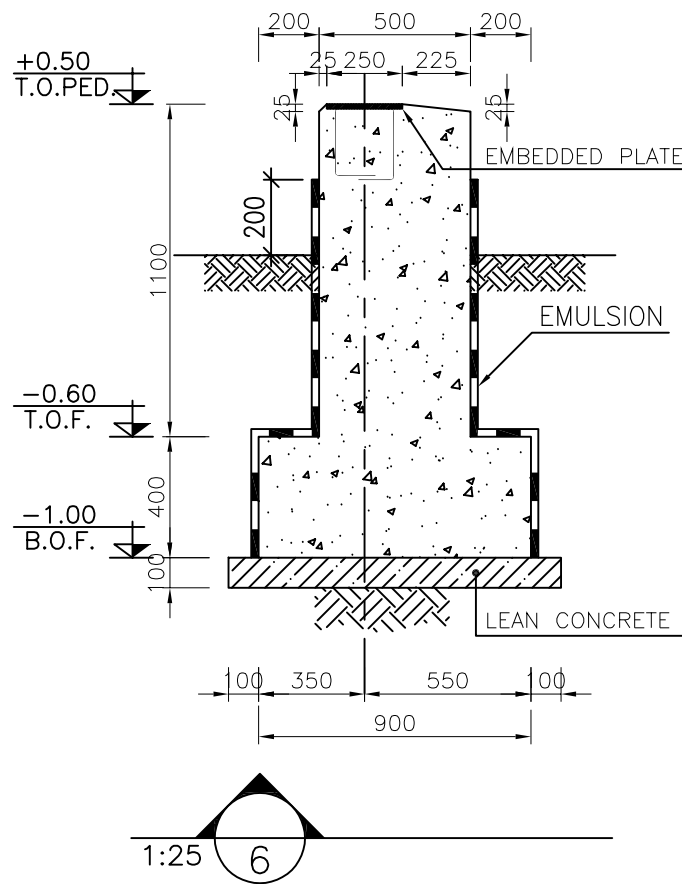
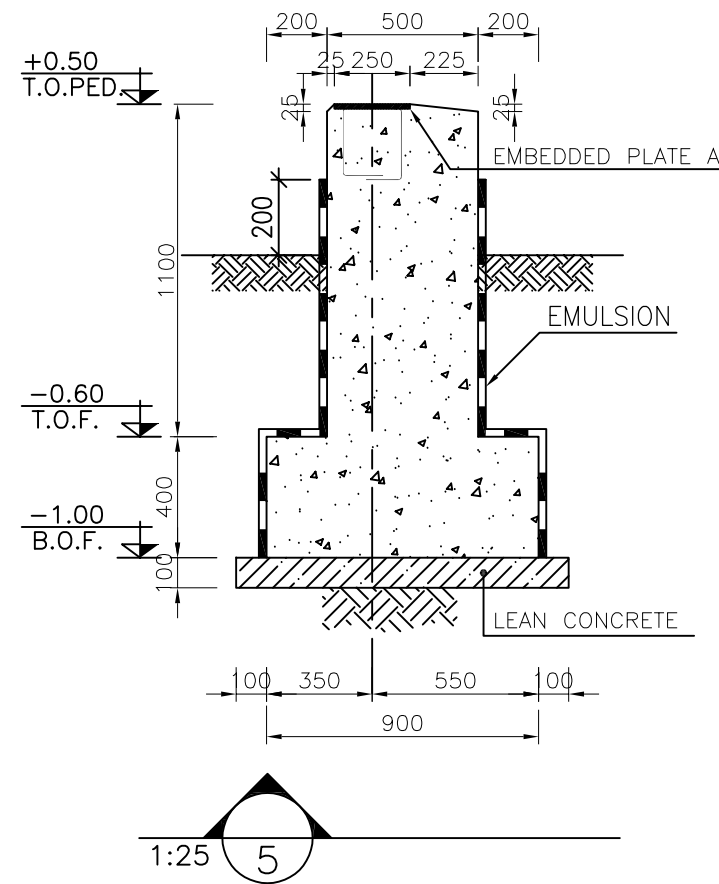
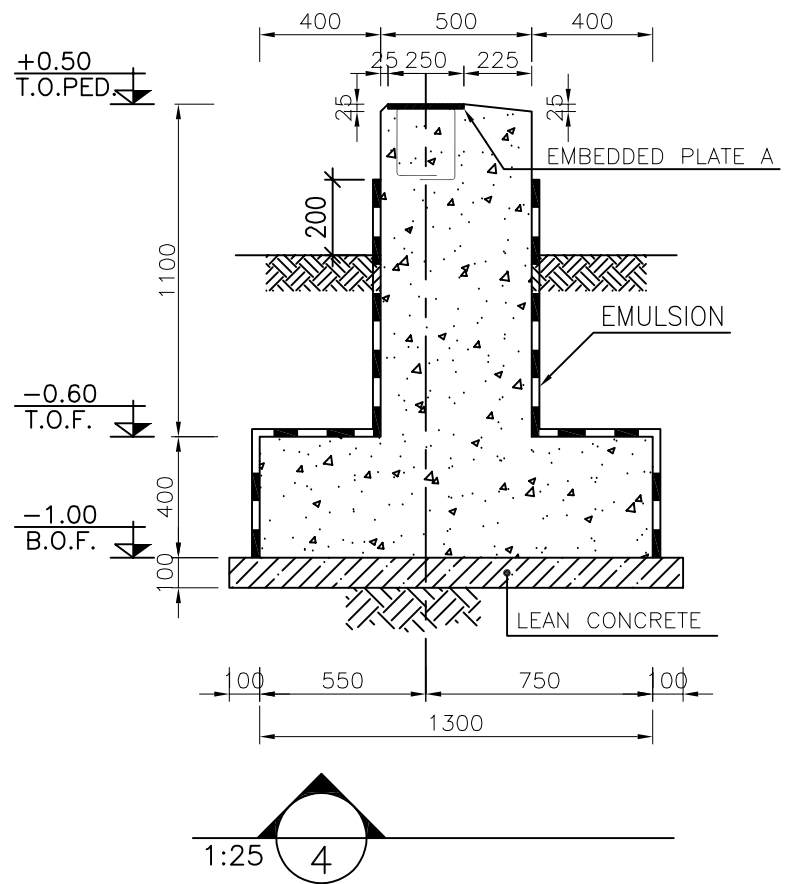
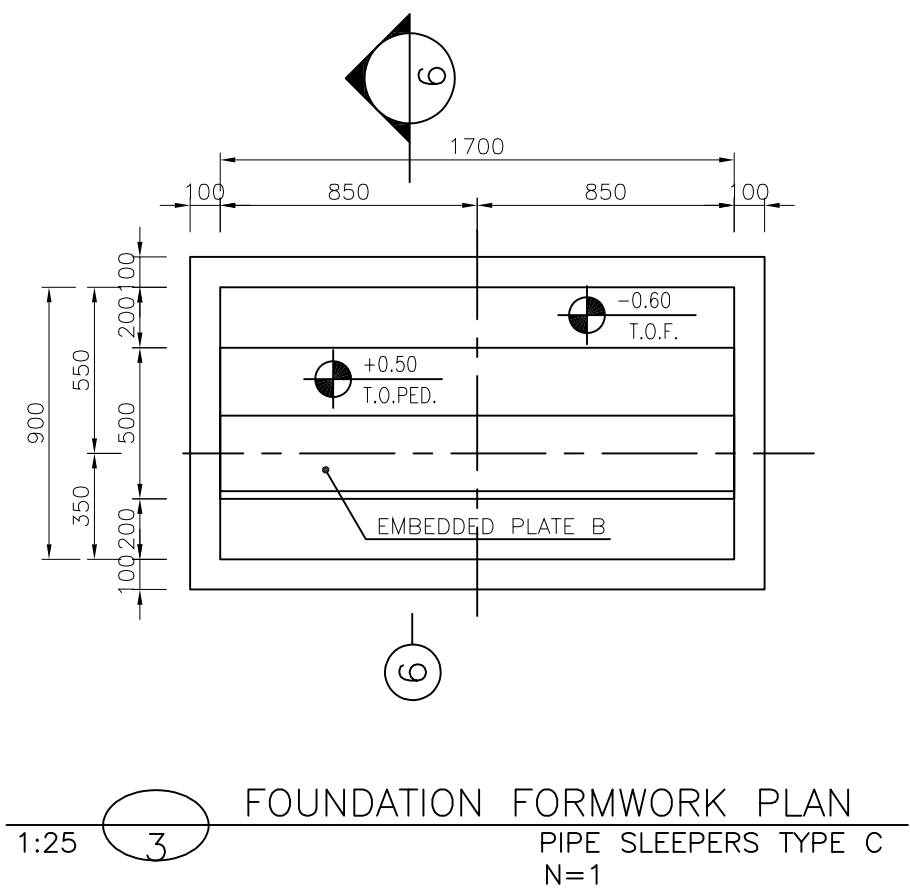
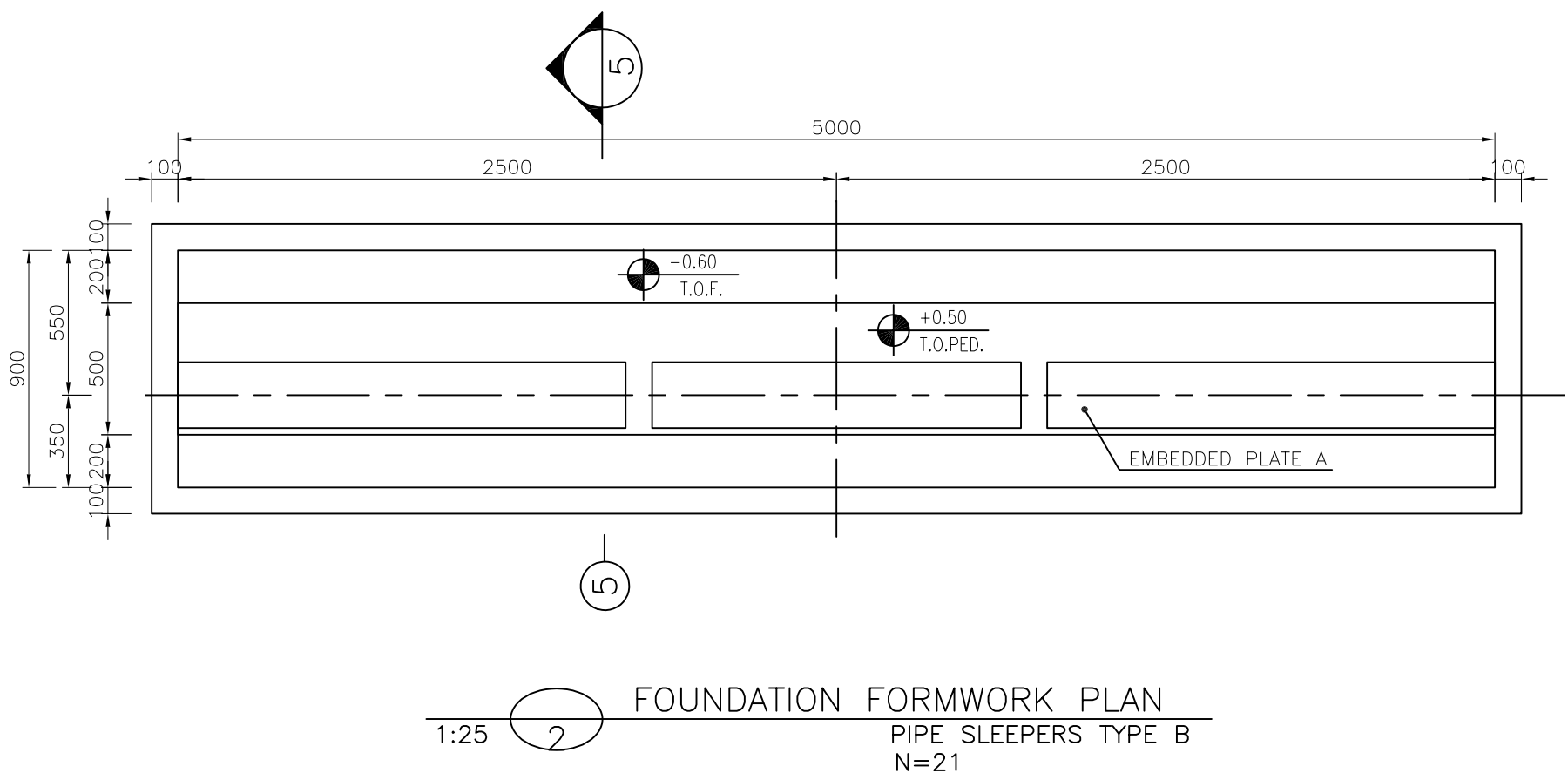
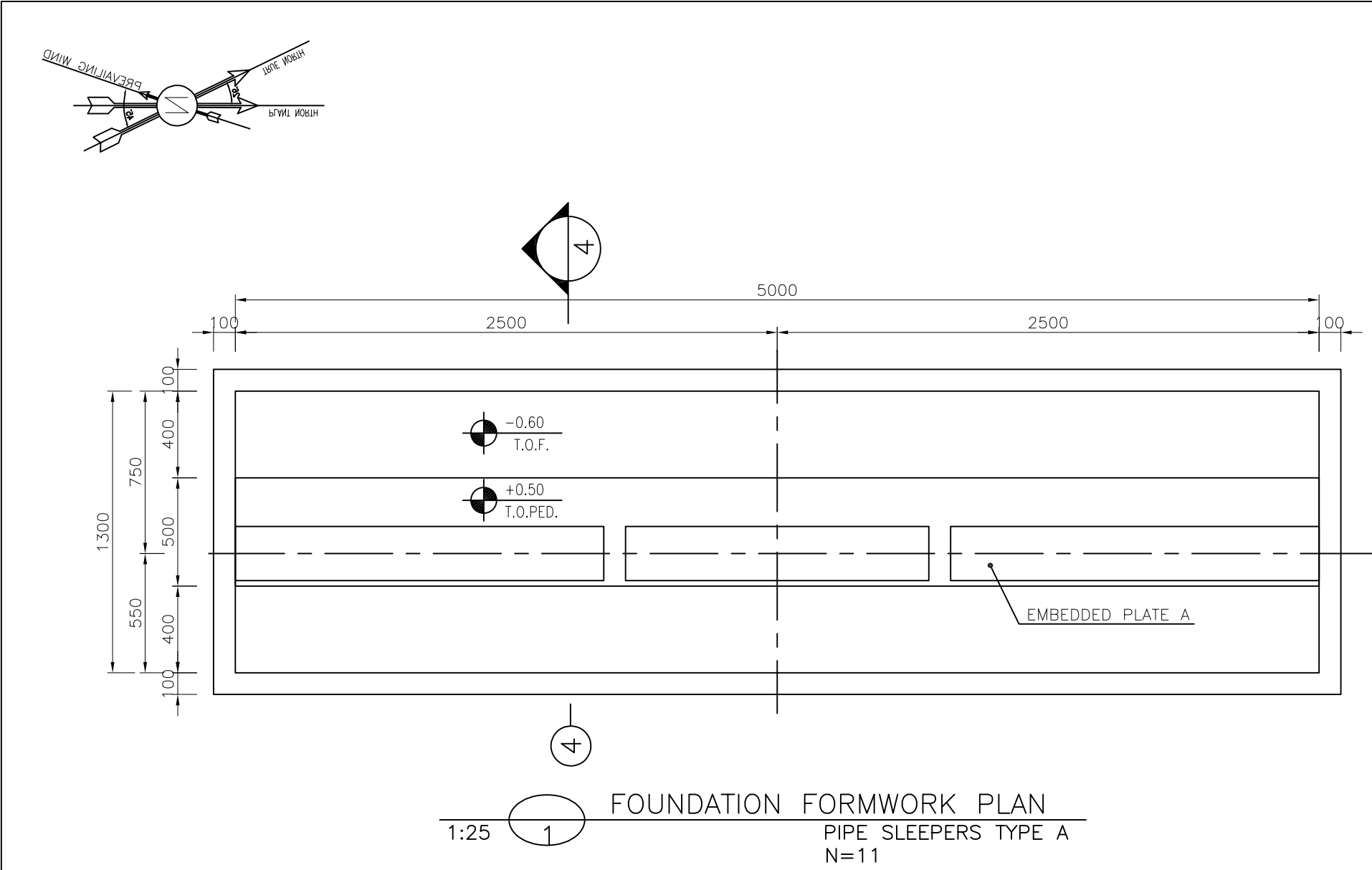
- NOTES
- 1) ALL ELEVATIONS AND COORDINATES ARE IN "m" AND DIMENSIONS ARE IN "mm" UNLESS OTHERWISE NOTED.
 - 2) ALL DIMENSIONS AND ELEVATIONS SHALL BE CHECKED BY THE CONTRACTOR PRIOR TO CONSTRUCTION.
 - 3) 28 DAYS CHARACTERISTIC COMPRESSIVE STRENGTH OF CONCRETE IS 30MPa. (ON CYLINDRICAL SPECIMEN)
 - 4) 28 DAYS CHARACTERISTIC COMPRESSIVE STRENGTH OF LEAN CONCRETE IS 15MPa. (ON CYLINDRICAL SPECIMEN)
 - 5) CONCRETE COVER OVER BARS SHALL BE 75mm FOR FOUNDATION AND 40mm FOR CAST IN-SITU OTHER PARTS.
 - 6) TENSION STRENGTH OF BARS SHALL BE OF MINIMUM $F_y=4000 \text{ kg/cm}^2$
 - 7) UNDERGROUND CONCRETE SHALL BE PROTECTED AND COATED ACCORDING TO RELEVANT SPECIFICATION.
 - 8) CEMENT TYPE II SHALL BE USED ACCORDING TO GEOTECHNICAL REPORT SUGGESTION.
 - 9) FILL MATERIAL SHALL BE COMPACTED TO NOT LESS THAN 95% OF THE MAXIMUM DENSITY AS DETERMINED BY ASTM D-1557 (MODIFIED PROCTOR) METHOD.
 - 10) REINFORCEMENT SHALL BE ADJUSTED LOCALLY TO SUIT THE RECESS OF ANCHOR BOLTS, HOLES AND OTHER EMBEDDED MATERIALS.
 - 11) THE EMULSION SHOULD BE USED ON CONCRETE EXPOSED WITH SOIL. B-90-COAT.M.E IS A BITUMEN-BASED ONE-COMPONENT EMULSION PROTECTIVE COATING TO PREVENT THE PENETRATION OF DESTRUCTIVE SALTS & IONS.
THIS MATERIAL IS CONTROLLED ACCORDING TO THE FOLLOWING STANDARDS:
ASTM D1227, ASTM D2939, ASTM D1640
- ±0.00 = +11.20(R.G.L.)MSL

LEGEND	
R.G.L.	ROUGH GRADING LEVEL
T.O.F.	TOP OF FOUNDATION
B.O.F.	BOTTOM OF FOUNDATION
T.O.PED.	TOP OF PEDESTAL
H.P.P.	HIGH POINT OF PAVING
	REINFORCED CONCRETE
	LEAN CONCRETE
	GROUND
REFERENCE DRAWING	
STANDARD DRAWING FOR INSERT PLATES IN CONCRETE	BK-GNRL-PEDCO-000-ST-DW-0007
GENERAL NOTES - REINFORCED CONCRETE STRUCTURES	BK-GNRL-PEDCO-000-ST-DW-0012
STANDARD PIPE SUPPORT DRAWINGS	BK-GCS-PEPCO-120-PI-DW-0001
UNIT PLOT PLAN DRAWING	BK-GCS-PEPCO-120-PI-PY-0001



***	*****	** **	*** ****	** **	*** ****
REV.	DESCRIPTION	BY	DATE	BY	DATE
		CHECKED		REV. APPR.	
اصل و کلیه نسخ این نقشه و حق اقتباس متعلق به شرکت ملی مناطق نفت خیز جنوب میباشد.					
 THE ORIGINAL AND ALL COPIES OF THIS DRAWING TOGETHER WITH THE COPYRIGHT THEREIN ARE THE SOLE PROPERTY OF N.I.S.O.C./ FIELDS					
BINAK OILFIELD DEVELOPMENT SURFACE FACILITIES GAS COMPRESSOR STATION					
DATE	SCALE	DRAWING BY	CHECKED BY	PROJECT ENG.	
NO CONSTRUCTION PERMITTED UNLESS DRAWING APPROVED					
APPROVED FOR CONSTRUCTION			BY:	DATE:	
BUDGET REF.	LOCATION	SIZE CLASS	SERIAL NO.	SHEET	REVISION
053-073-9184	F	4 Q	709181	01	D05





- NOTES
- 1) ALL ELEVATIONS AND COORDINATES ARE IN "m" AND DIMENSIONS ARE IN "mm" UNLESS OTHERWISE NOTED.
 - 2) ALL DIMENSIONS AND ELEVATIONS SHALL BE CHECKED BY THE CONTRACTOR PRIOR TO CONSTRUCTION.
 - 3) 28 DAYS CHARACTERISTIC COMPRESSIVE STRENGTH OF CONCRETE IS 30MPa. (ON CYLINDRICAL SPECIMEN)
 - 4) 28 DAYS CHARACTERISTIC COMPRESSIVE STRENGTH OF LEAN CONCRETE IS 15MPa. (ON CYLINDRICAL SPECIMEN)
 - 5) CONCRETE COVER OVER BARS SHALL BE 75mm FOR FOUNDATION AND 40mm FOR CAST IN-SITU OTHER PARTS.
 - 6) TENSION STRENGTH OF BARS SHALL BE OF MINIMUM $F_y=4000 \text{ kg/cm}^2$
 - 7) UNDERGROUND CONCRETE SHALL BE PROTECTED AND COATED ACCORDING TO RELEVANT SPECIFICATION.
 - 8) CEMENT TYPE II SHALL BE USED ACCORDING TO GEOTECHNICAL REPORT SUGGESTION.
 - 9) FILL MATERIAL SHALL BE COMPACTED TO NOT LESS THAN 95% OF THE MAXIMUM DENSITY AS DETERMINED BY ASTM D-1557 (MODIFIED PROCTOR) METHOD.
 - 10) REINFORCEMENT SHALL BE ADJUSTED LOCALLY TO SUIT THE RECESS OF ANCHOR BOLTS, HOLES AND OTHER EMBEDDED MATERIALS.
 - 11) THE EMULSION SHOULD BE USED ON CONCRETE EXPOSED WITH SOIL. B-90-COAT.M.E IS A BITUMEN-BASED ONE-COMPONENT EMULSION PROTECTIVE COATING TO PREVENT THE PENETRATION OF DESTRUCTIVE SALTS & IONS. THIS MATERIAL IS CONTROLLED ACCORDING TO THE FOLLOWING STANDARDS: ASTM D1227, ASTM D2939, ASTM D1640

±0.00 = +11.20(R.G.L.)MSL

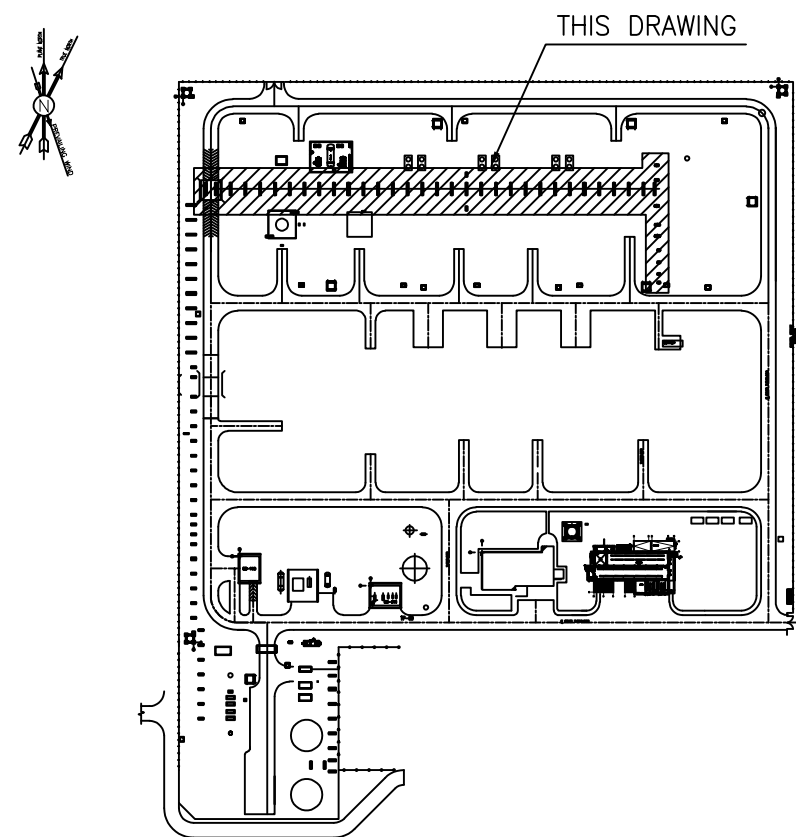
LEGEND




R.G.L. ROUGH GRADING LEVEL
T.O.F. TOP OF FOUNDATION
B.O.F. BOTTOM OF FOUNDATION
T.O.PED. TOP OF PEDESTAL
H.P.P. HIGH POINT OF PAVING

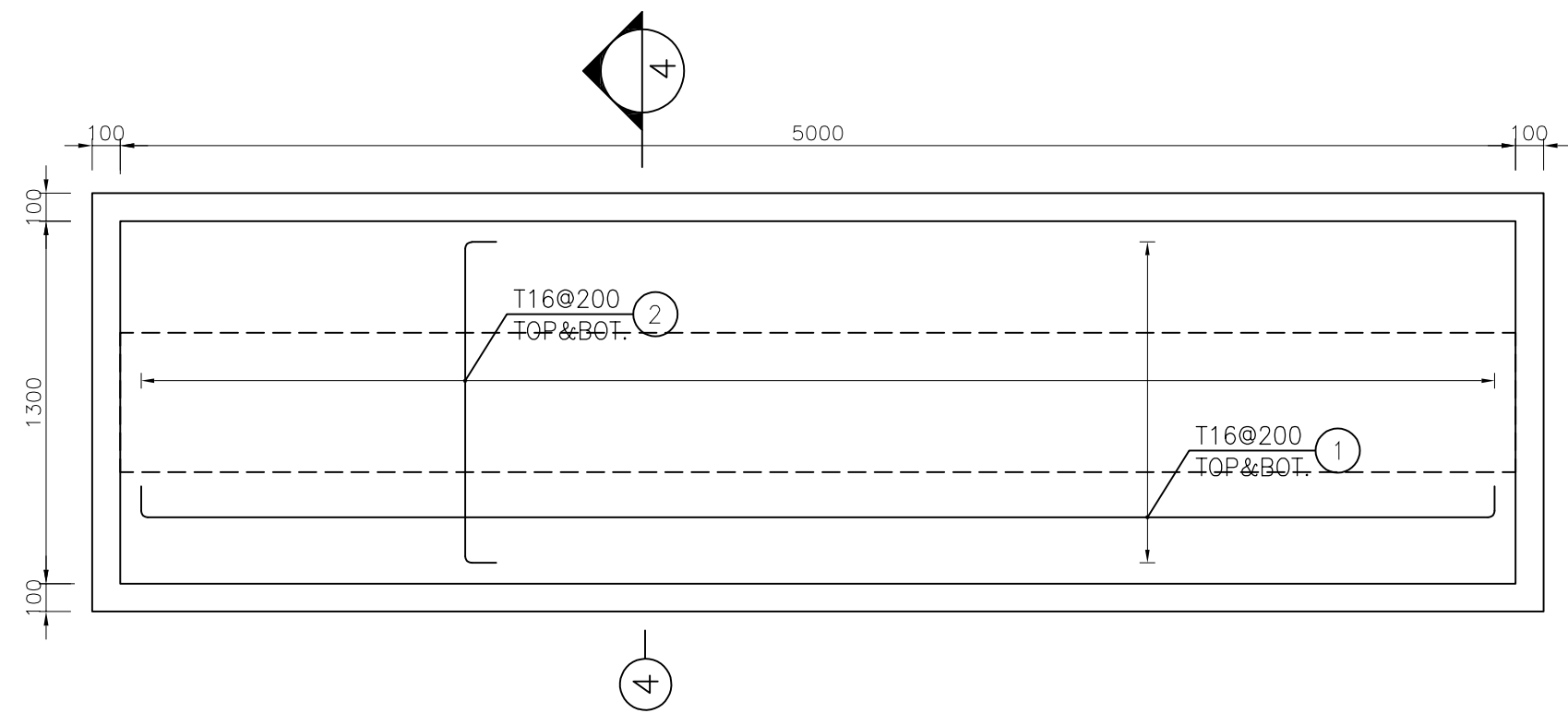
REINFORCED CONCRETE
LEAN CONCRETE
GROUND

REFERENCE DRAWING	DRG. No.
STANDARD DRAWING FOR INSERT PLATES IN CONCRETE	BK-GNRL-PEDCO-000-ST-DW-0007
GENERAL NOTES - REINFORCED CONCRETE STRUCTURES	BK-GNRL-PEDCO-000-ST-DW-0012
STANDARD PIPE SUPPORT DRAWINGS	BK-GCS-PEDCO-120-PI-DW-0001
UNIT PLOT PLAN DRAWING	BK-GCS-PEDCO-120-PI-PY-0001

KEY PLAN



D05	MAY.2024	AFC	R.BERLOUIE	M.FAKHARIAN	S.PARAMAKPOUR	***							
D04	MAR.2024	AFC	R.BERLOUIE	M.FAKHARIAN	S.PARAMAKPOUR	***							
D03	JUN.2023	AFC	R.BERLOUIE	M.FAKHARIAN	A.M.MOHSSENI	***							
D02	MAY.2023	IFA	R.BERLOUIE	M.FAKHARIAN	A.M.MOHSSENI	**	***	*****	***	*****	**	*****	
D01	MAR.2023	IFA	R.BERLOUIE	M.FAKHARIAN	M.MEHRSHAD	**	REV.	DESCRIPTION	BY	DATE	BY	DATE	
D00	JAN.2023	IPC	R.BERLOUIE	M.FAKHARIAN	M.MEHRSHAD	**			CHECKED		REV. APPR.		
REV.	DATE	P.O.I.S	PREP.	CHK.	APP.	AUT.	اصل و کلیه نسخ این نقشه و حق اقتباس متعلق به شرکت ملی مناطق نفت خیز جنوب می باشد.						
PROJECT NAME: BINAK OILFIELD DEVELOPMENT/SURFACE FACILITIES GAS COMPRESSOR STATION							 THE ORIGINAL AND ALL COPIES OF THIS DRAWING TOGETHER WITH THE COPYRIGHT THEREIN ARE THE SOLE PROPERTY OF N.I.S.O.C./ FIELDS						
PROJECT NO.: 971020													
EPC CONTRACTOR:			EPD/EPC CONTRACTOR (GC):										
 HIRGAN ENERGY - DESIGN & INSPECTION COMPANIES			 PETROIRAN DEVELOPMENT COMPANY										
			BINAK OILFIELD DEVELOPMENT SURFACE FACILITIES GAS COMPRESSOR STATION										
			DATE		SCALE		DRAWING BY		CHECKED BY		PROJECT ENG.		
DRAWING TITLE: FOUNDATION DRAWING FOR COMPRESSOR AREA MAIN SLEEPERS							NO CONSTRUCTION PERMITTED UNLESS DRAWING APPROVED						
							APPROVED FOR CONSTRUCTION			BY:		DATE:	
SCALE	SIZE	DRAWING NO.			SHEET NO.	REV.	BUDGET REF.	LOCATION	SIZE	CLASS	SERIAL NO.	SHEET	REVISION
AS SHOWN	A1	BK-GCS-PEPCO-120-ST-DW-0044			03 OF 04	D05	053-073-9184	F	4	Q	709181	03	D05



Technical drawing of a vertical structure, likely a chimney or stack, showing dimensions and callouts. The drawing includes a side elevation and a cross-section.

Dimensions:

- Top width: 500
- Top height: ± 0.50 T.O. PED.
- Side height: 1100
- Bottom height: -0.60 T.O.F.
- Bottom width: 400
- Bottom height: 100

Callouts and Details:

- Callout 1: T16@200 (vertical reinforcement)
- Callout 2: T16@200 TOP & BOT. (top and bottom reinforcement)
- Callout 3: T16@200 TOP & BOT. (top and bottom reinforcement)
- Callout 4: T16@200 (vertical reinforcement)
- Callout 5: T16@200 (vertical reinforcement)
- Callout 6: 2x5 T12 (top reinforcement)
- Callout 7: (top reinforcement detail)

Scale: 1:25

Technical drawing of a vertical structure, likely a chimney or stack, showing dimensions and callouts. The drawing includes a cross-section view (left) and a side elevation view (right).

Dimensions:

- Top elevation: ± 0.50 T.O.P.E.D.
- Height: 1100
- Bottom elevation: -0.60 T.O.F.
- Height: 400
- Width: 500

Callouts and Notes:

- (8) indicates a section cut.
- T16@200 indicates reinforcement bars.
- 2x2 T12 indicates reinforcement bars.
- (6) indicates a section cut.
- (5) indicates a section cut.
- (4) indicates a section cut.
- T16@200 TOP & BOT.
- T16@200 TOP & BOT.
- (3) indicates a section cut.
- (6) indicates a section cut.

Scale: 1:25

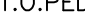

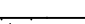
Technical drawing of a rectangular reinforced concrete slab. The plan view shows a rectangle with dimensions 1700 mm by 500 mm. Reinforcement includes 2x2 T12 bars at 1000 mm spacing (labeled 6), T16 bars at 200 mm spacing (labeled 4), and T16 bars at 200 mm spacing (labeled 5). A section line A-A is indicated. The section view shows a cross-section with a height of 500 mm and a width of 8 mm, with a scale of 1:25.

Technical drawing of a reinforced concrete beam. The cross-section (7) is a circle with a diameter of 500 mm. The elevation (1) shows a beam of length 5000 mm. The reinforcement includes 2x5 T12 bars at 1000 mm spacing (6) and T16 bars at 200 mm spacing (5).

NOTES

- 1) ALL ELEVATIONS AND COORDINATES ARE IN "m" AND DIMENSIONS ARE IN "mm" UNLESS OTHERWISE NOTED.
- 2) ALL DIMENSIONS AND ELEVATIONS SHALL BE CHECKED BY THE CONTRACTOR PRIOR TO CONSTRUCTION.
- 3) 28 DAYS CHARACTERISTIC COMPRESSIVE STRENGTH OF CONCRETE IS 30MPa. (ON CYLINDRICAL SPECIMEN)
- 4) 28 DAYS CHARACTERISTIC COMPRESSIVE STRENGTH OF LEAN CONCRETE IS 15MPa. (ON CYLINDRICAL SPECIMEN)
- 5) CONCRETE COVER OVER BARS SHALL BE 75mm FOR FOUNDATION AND 40mm FOR CAST IN-SITU OTHER PARTS.
- 6) TENSION STRENGTH OF BARS SHALL BE OF MINIMUM $F_y = 4000 \text{ kg/cm}^2$
- 7) UNDERGROUND CONCRETE SHALL BE PROTECTED AND COATED ACCORDING TO RELEVANT SPECIFICATION.
- 8) CEMENT TYPE II SHALL BE USED ACCORDING TO GEOTECHNICAL REPORT SUGGESTION.
- 9) FILL MATERIAL SHALL BE COMPACTED TO NOT LESS THAN 95% OF THE MAXIMUM DENSITY AS DETERMINED BY ASTM D-1557 (MODIFIED PROCTOR) METHOD.
- 10) REINFORCEMENT SHALL BE ADJUSTED LOCALLY TO SUIT THE RECESS OF ANCHOR BOLTS, HOLES AND OTHER EMBEDDED MATERIALS.
- 11) THE EMULSION SHALL BE USED ON CONCRETE EXPOSED WITH SOIL. B-90-COAT.M.E IS A BITUMEN-BASED ONE-COMPONENT EMULSION PROTECTIVE COATING TO PREVENT THE PENETRATION OF DESTRUCTIVE SALTS & IONS.

THIS MATERIAL IS CONTROLLED ACCORDING TO THE FOLLOWING STANDARDS:
ASTM D1227, ASTM D2939, ASTM D1640

LEGEND	
R.G.L.	ROUGH GRADING LEVEL
T.O.F.	TOP OF FOUNDATION
B.O.F.	BOTTOM OF FOUNDATION
T.O.PED.	TOP OF PEDESTAL
H.P.P.	HIGH POINT OF PAVING
	REINFORCED CONCRETE
	LEAN CONCRETE
	GROUND

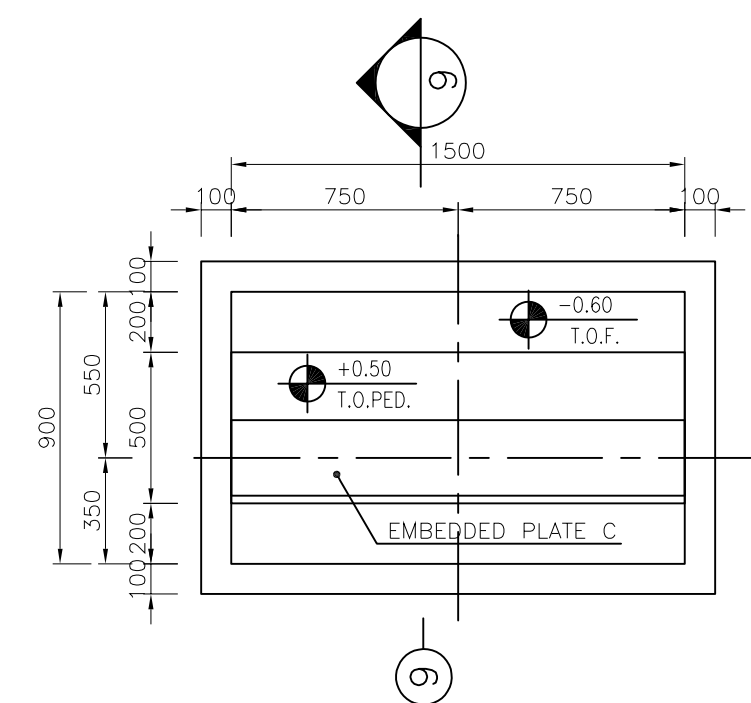
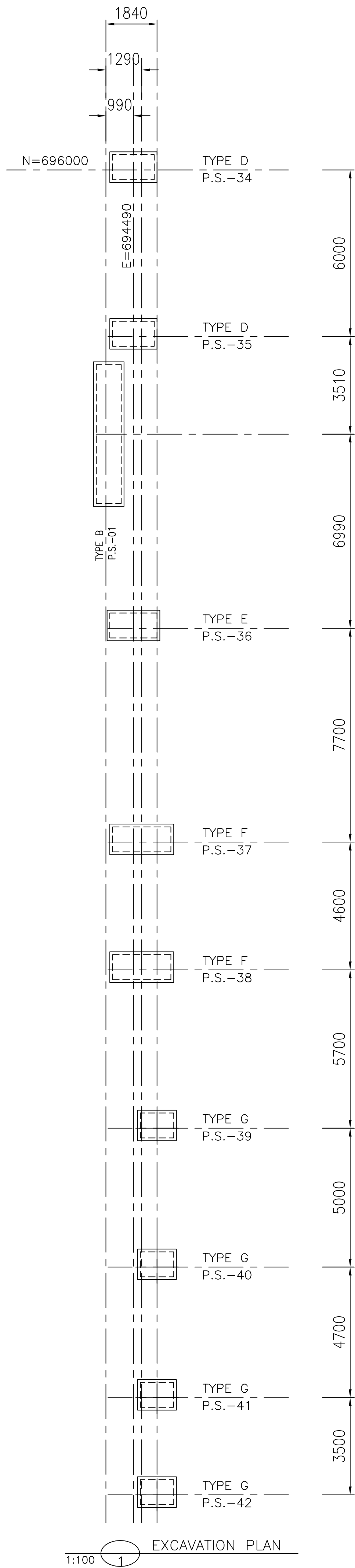
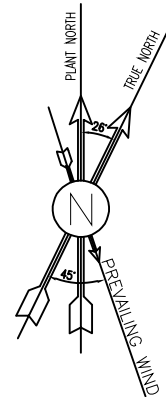
***	*****	** **	*** ****	** **	*** ****
REV.	DESCRIPTION	BY	DATE	BY	DATE
		CHECKED		REV. APPR.	

PROJECT NAME:	BINAK OILFIELD DEVELOPMENT/SURFACE FACILITIES GAS COMPRESSOR STATION
---------------	---

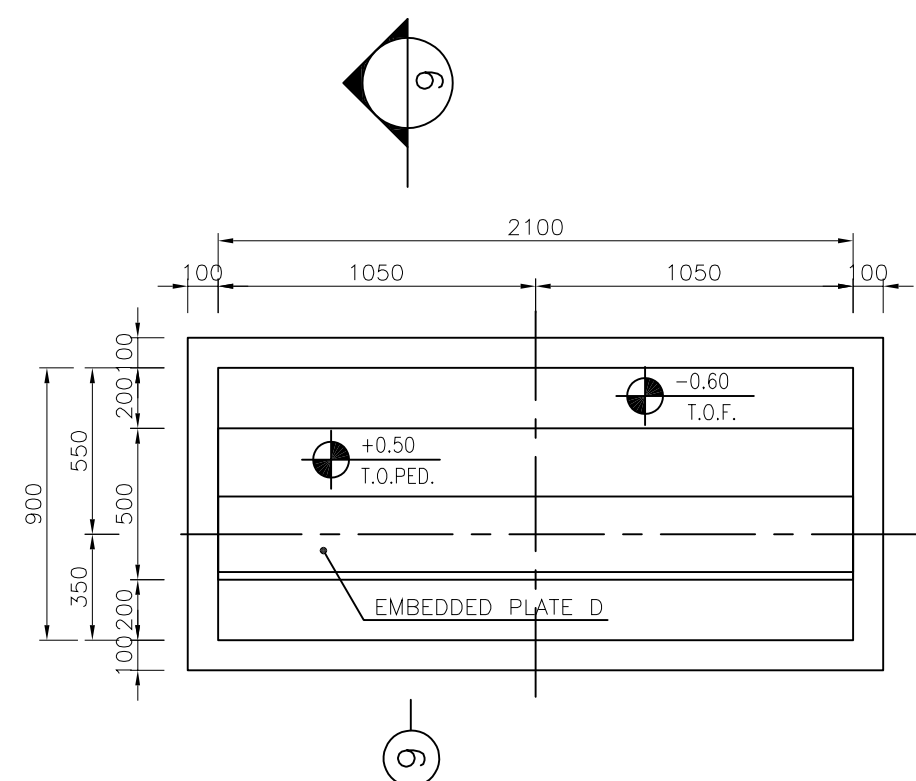
BINAK OILFIELD DEVELOPMENT
SURFACE FACILITIES
GAS COMPRESSOR STATION

NO CONSTRUCTION PERMITTED UNLESS DRAWING APPROVED

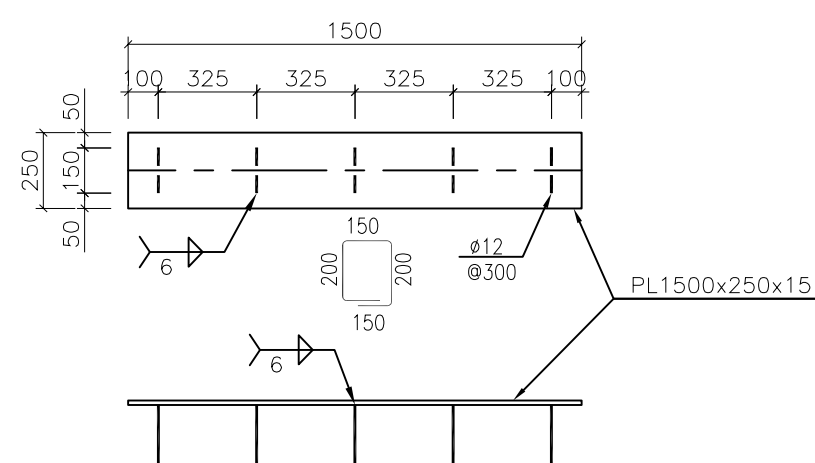
SCALE	SIZE	DRAWING NO.	SHEET NO.	REV.	BUDGET REF.	LOCATION	SIZE	CLASS	SERIAL NO.	SHEET	REVISION
AS SHOWN	A1	BK-GCS-PEPCO-120-ST-DW-0044	04 OF 04	D05	053-073-9184	F	4	Q	709181	04	D05



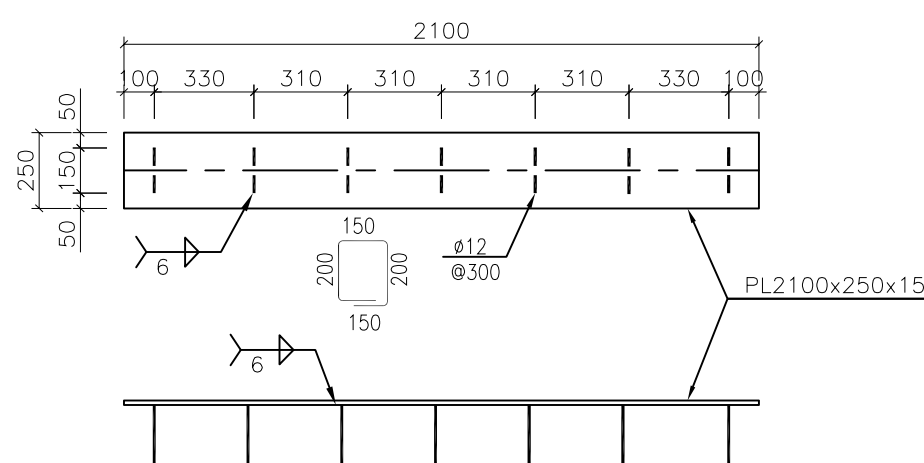
FOUNDATION FORMWORK PLAN
PIPE SLEEPERS TYPE D
N=2
1:25



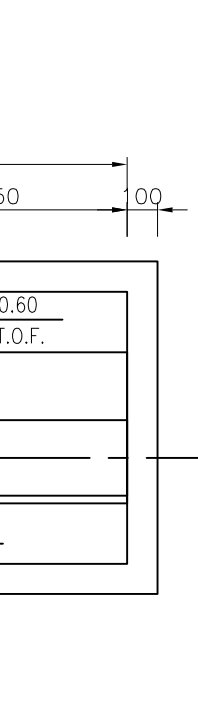
FOUNDATION FORMWORK PLAN
PIPE SLEEPERS TYPE F
N=2
1:25



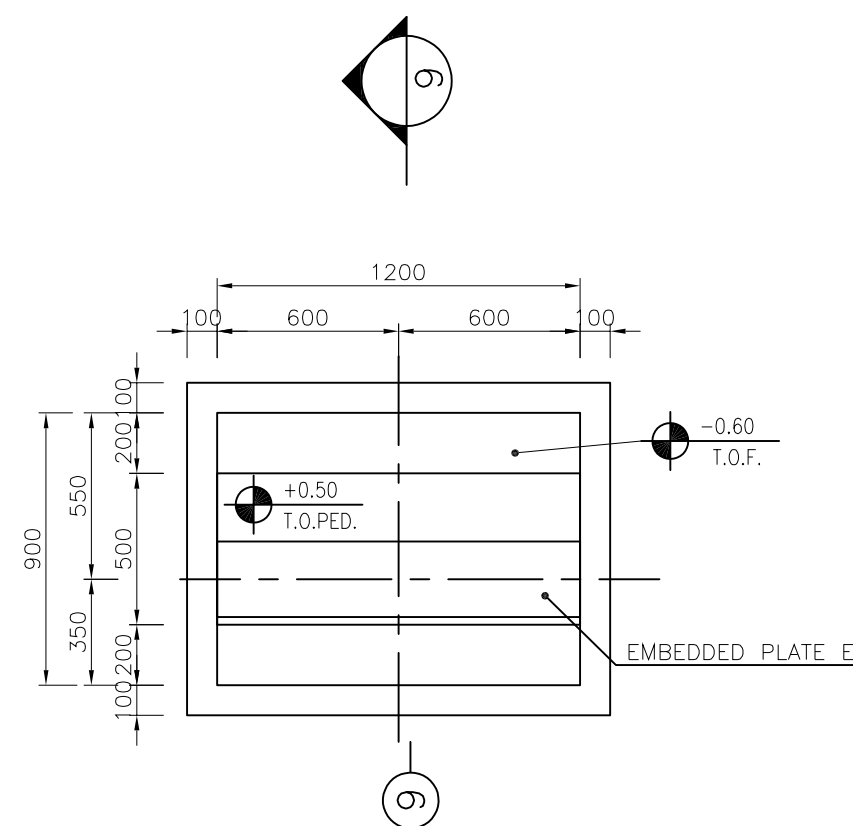
EMBEDDED PLATE C DETAIL
1:25



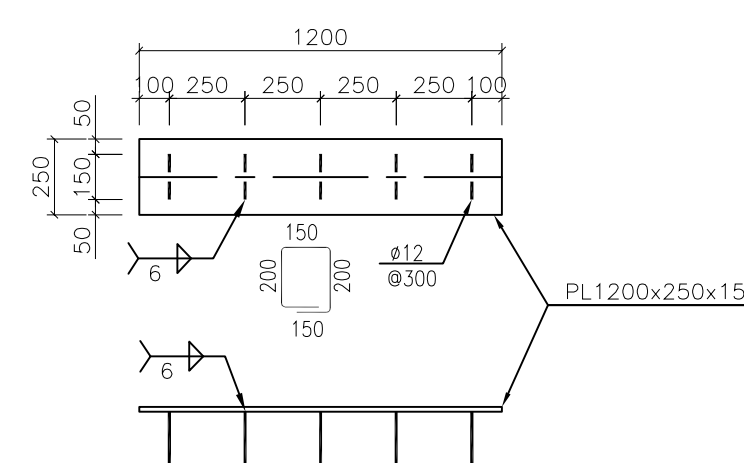
EMBEDDED PLATE D DETAIL
1:25



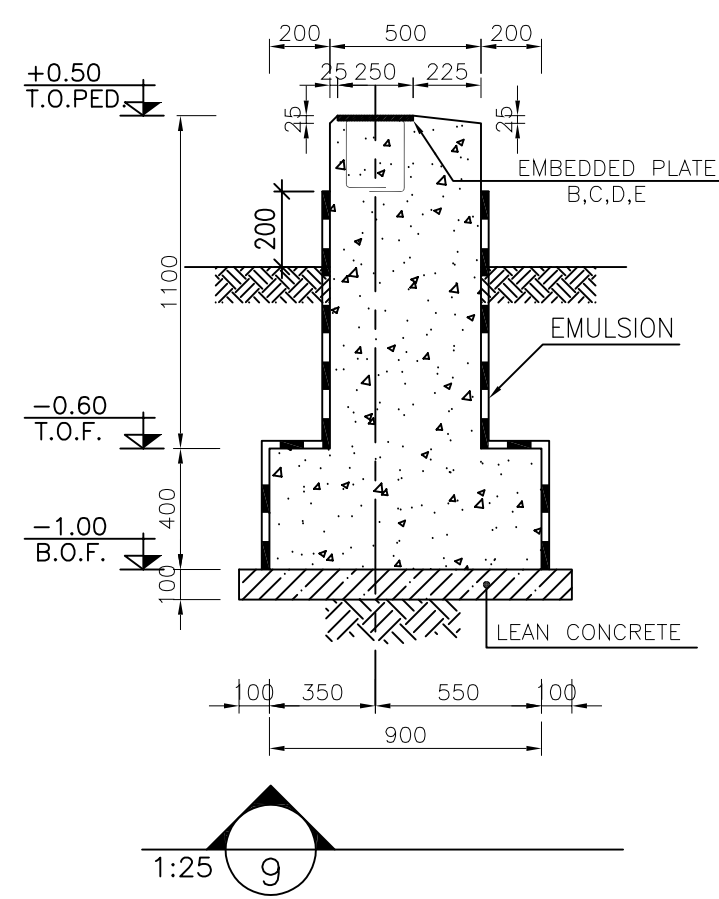
FOUNDATION FORMWORK PLAN
PIPE SLEEPERS TYPE E
N=1
1:25



FOUNDATION FORMWORK PLAN
PIPE SLEEPERS TYPE G
N=4
1:25






EMBEDDED PLATE E DETAIL
1:25

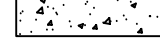




1:25

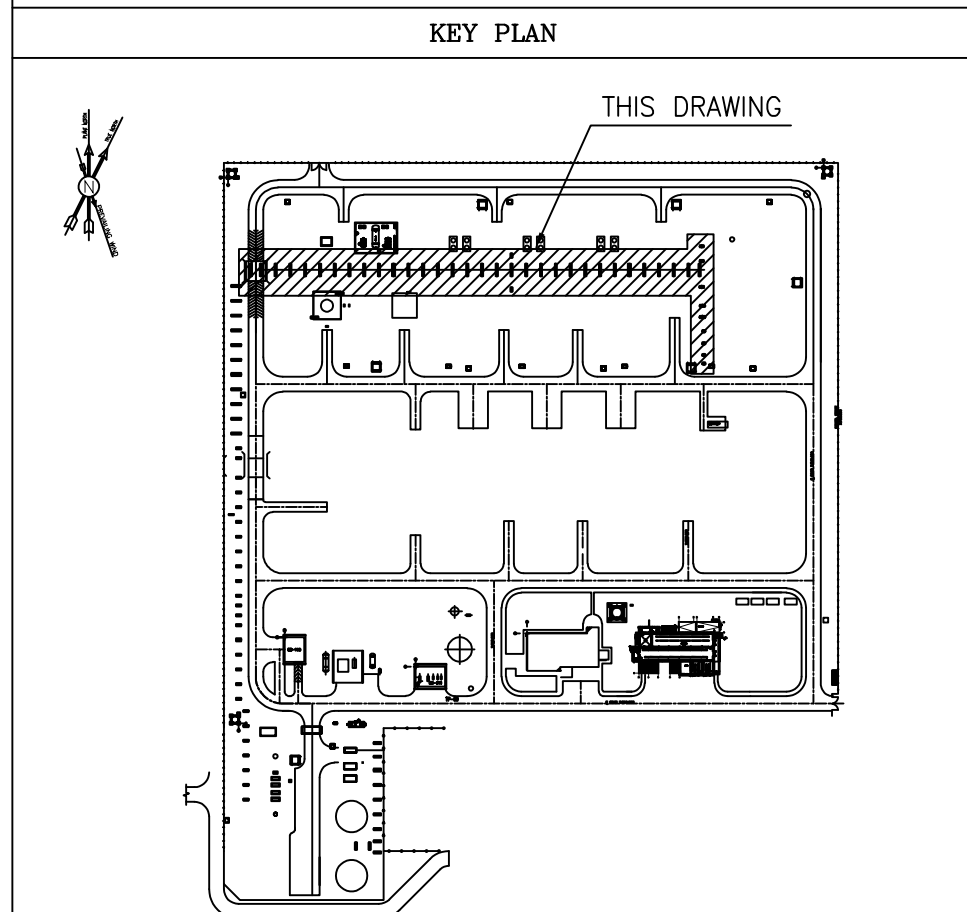
PIPE SLEEPERS LOCATION TABLE					
ITEM	TYPE	COORDINATES		T.O.PED.	
		E (m)	N (m)		
P.S.-34	D	694490	696000	+0.50	
P.S.-35	D	694490	690000	+0.50	
P.S.-36	E	694490	679500	+0.50	
P.S.-37	F	694790	671800	+0.50	
P.S.-38	F	694790	667200	+0.50	
P.S.-39	G	695340	661500	+0.50	
P.S.-40	G	695340	656500	+0.50	
P.S.-41	G	695340	651800	+0.50	
P.S.-42	G	695340	648300	+0.50	


D05	MAY.2024	AFC	R.BERLOUJE	M.FAKHARIAN	S.PARAMAKPOUR	***
D04	MAR.2024	AFC	R.BERLOUJE	M.FAKHARIAN	S.PARAMAKPOUR	***
D03	JUN.2023	AFC	R.BERLOUJE	M.FAKHARIAN	A.M.MOHSSENI	***
D02	MAY.2023	IPA	R.BERLOUJE	M.FAKHARIAN	A.M.MOHSSENI	***
D01	MAR.2023	IPA	R.BERLOUJE	M.FAKHARIAN	M.MEHRSHAD	***
D00	JAN.2023	IPC	R.BERLOUJE	M.FAKHARIAN	M.MEHRSHAD	***
REV.	DATE	P.O.I.S	PREP.	CHK.	APP.	AUT.
PROJECT NAME: BINAK OILFIELD DEVELOPMENT/SURFACE FACILITIES GAS COMPRESSOR STATION						
PROJECT NO.:			971020			
EPC CONTRACTOR:			EPD/EPC CONTRACTOR (GC):			
<div><div>HIRGAN ENERGY - DESIGN & INSPECTION COMPANIES</div></div>			<div><div>PETROIRAN DEVELOPMENT COMPANY</div></div>			
DRAWING TITLE:						
SCALE	SIZE	DRAWING NO.			SHEET NO.	REV.
AS SHOWN	A1	BK-GCS-PEPCO-120-ST-DW-0044			05 OF 06	D05

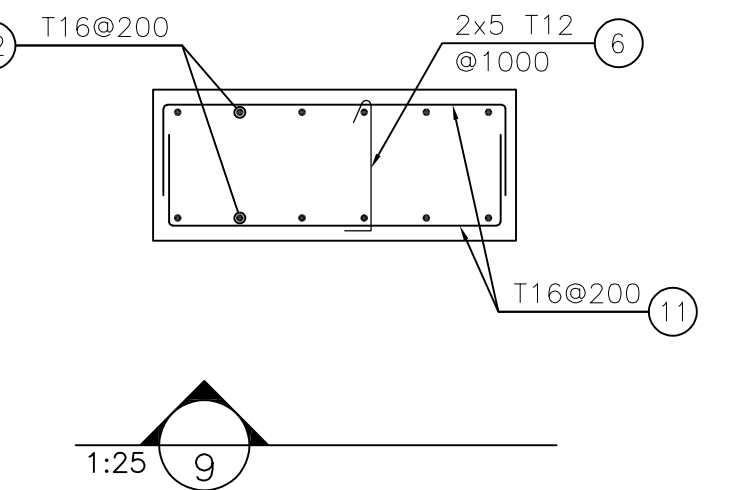
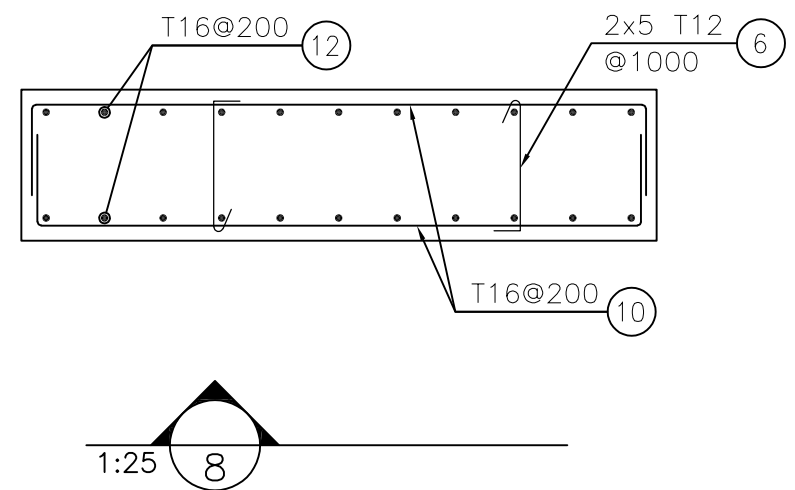
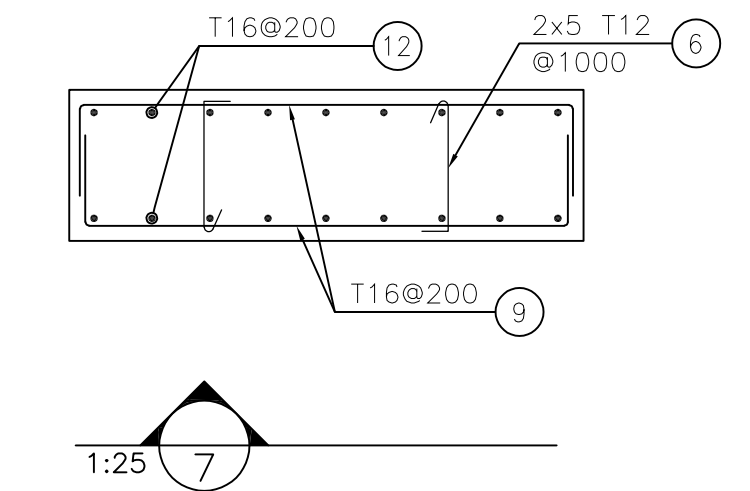
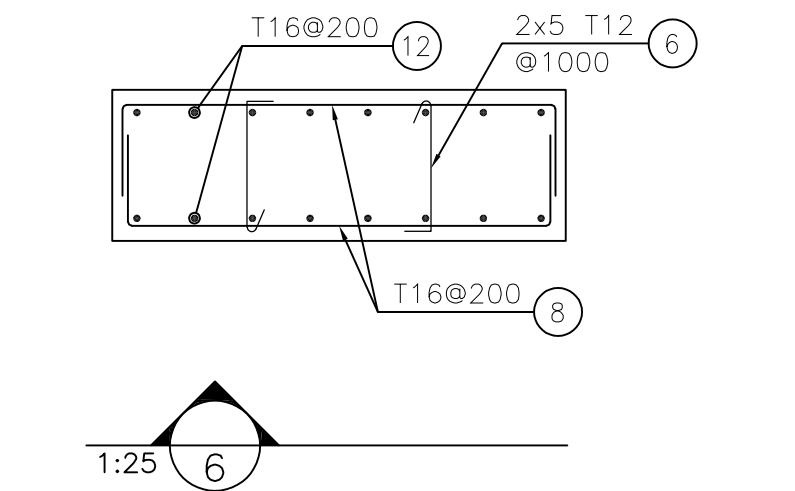
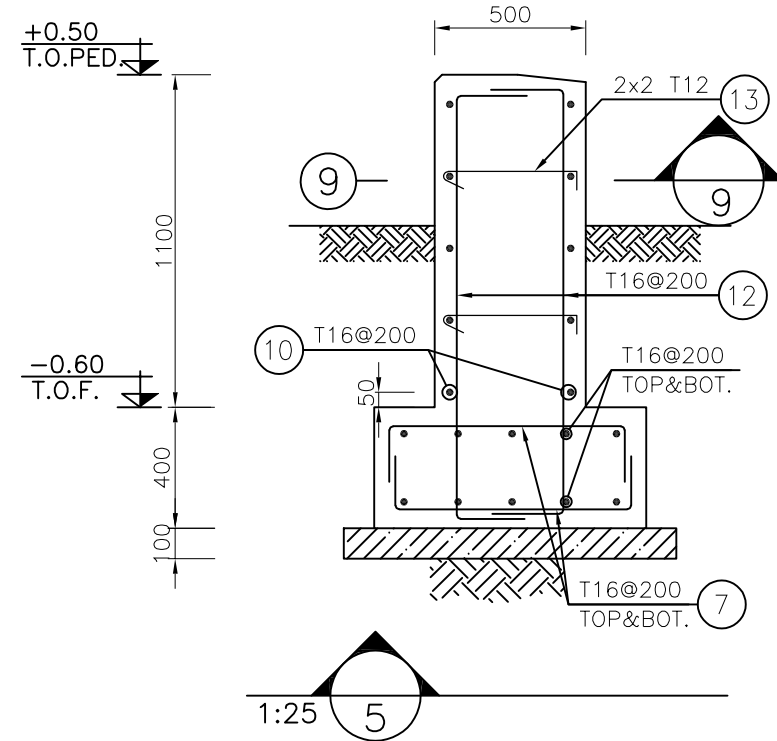
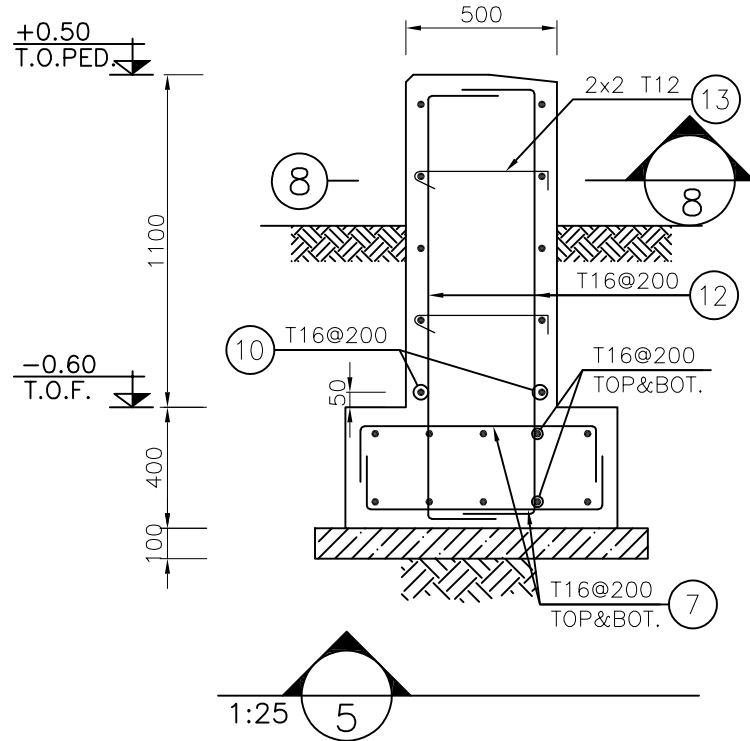
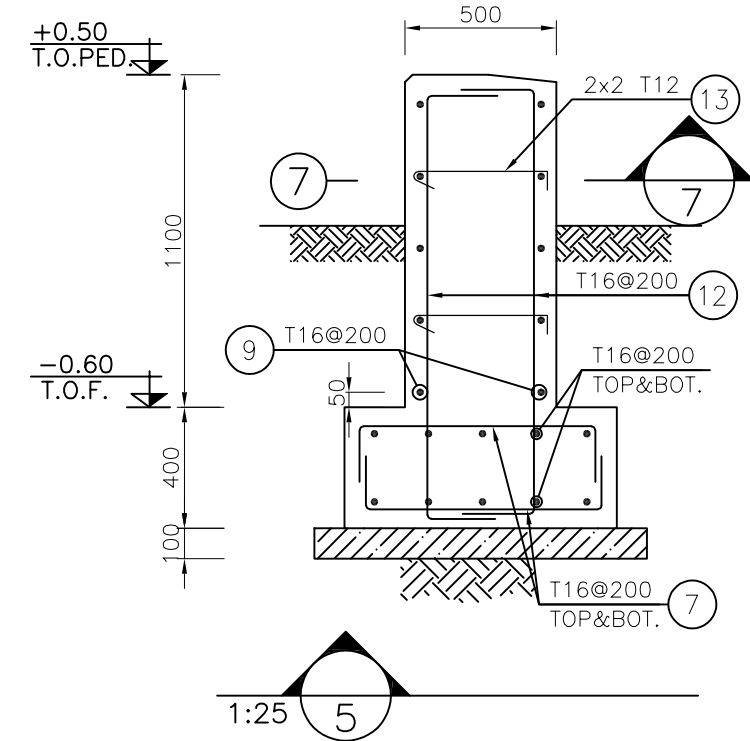
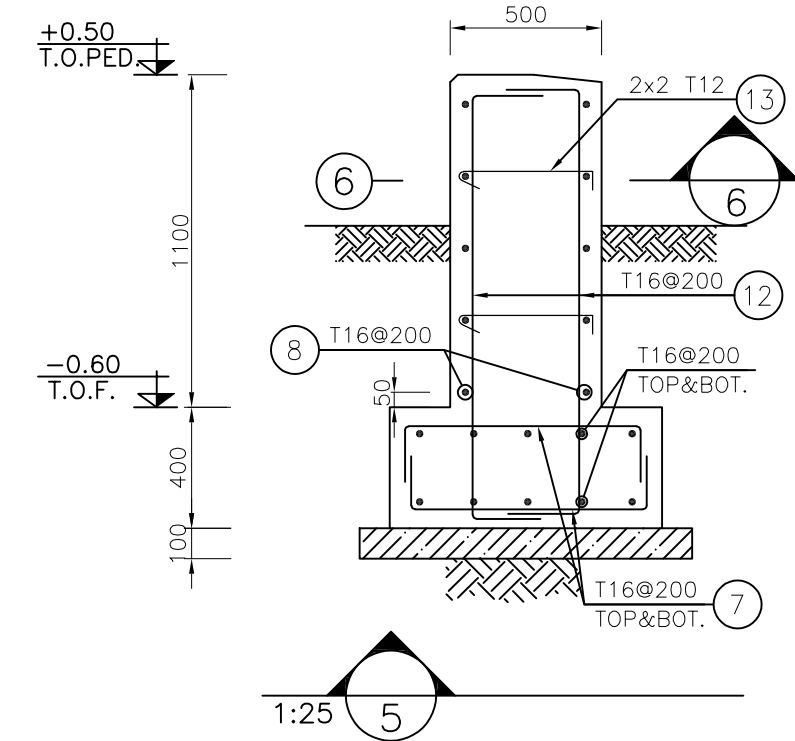
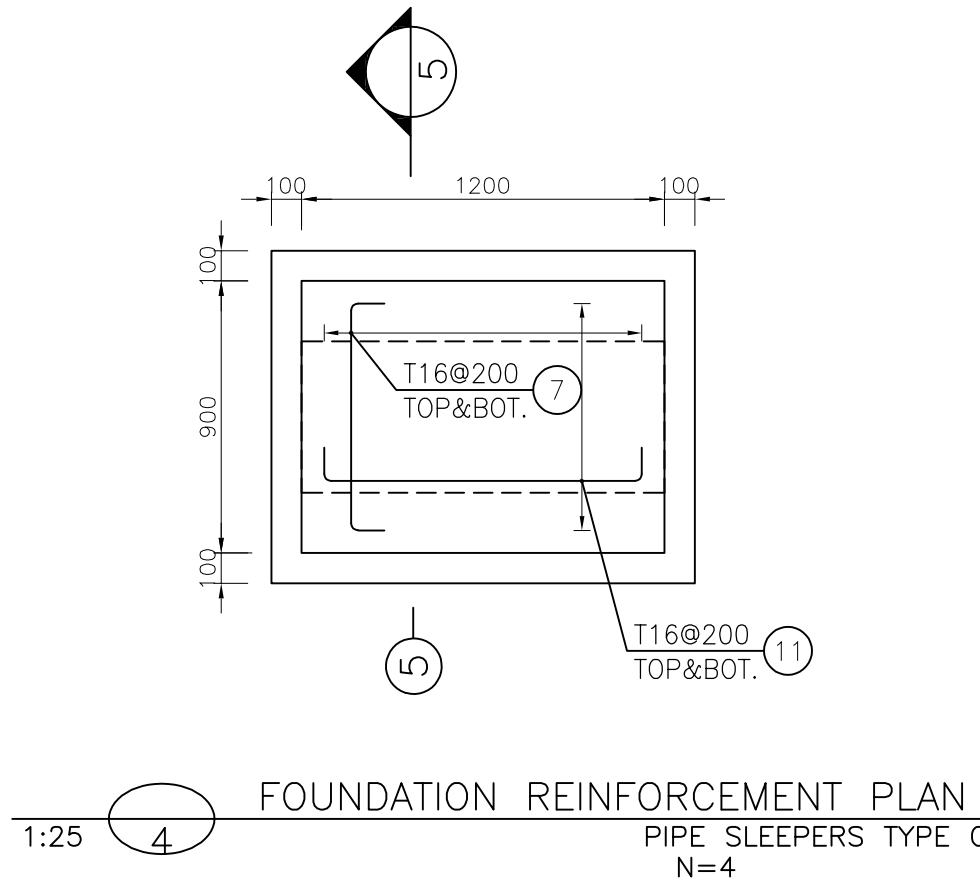
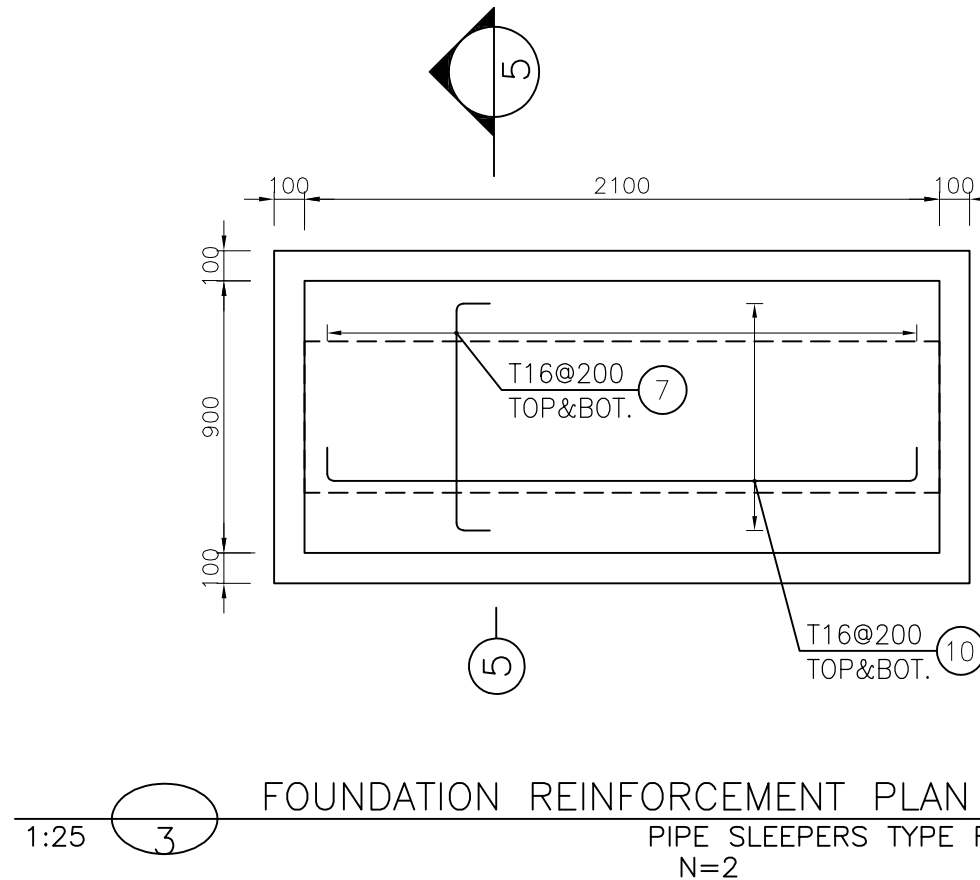
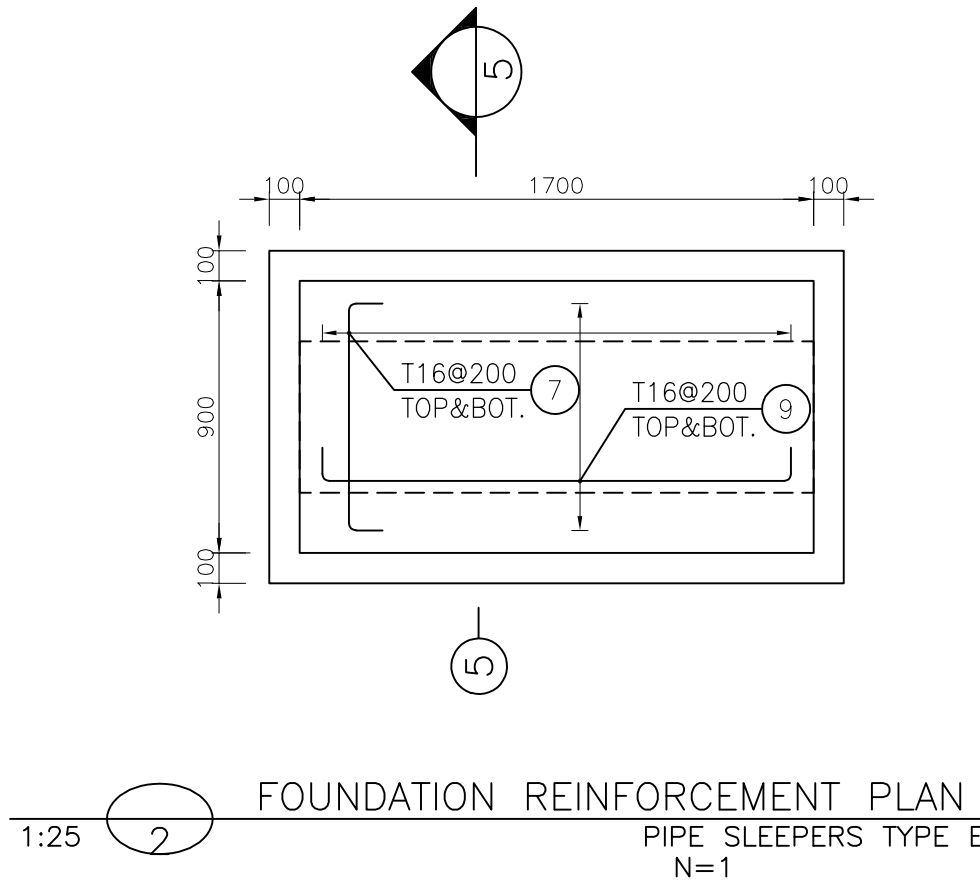
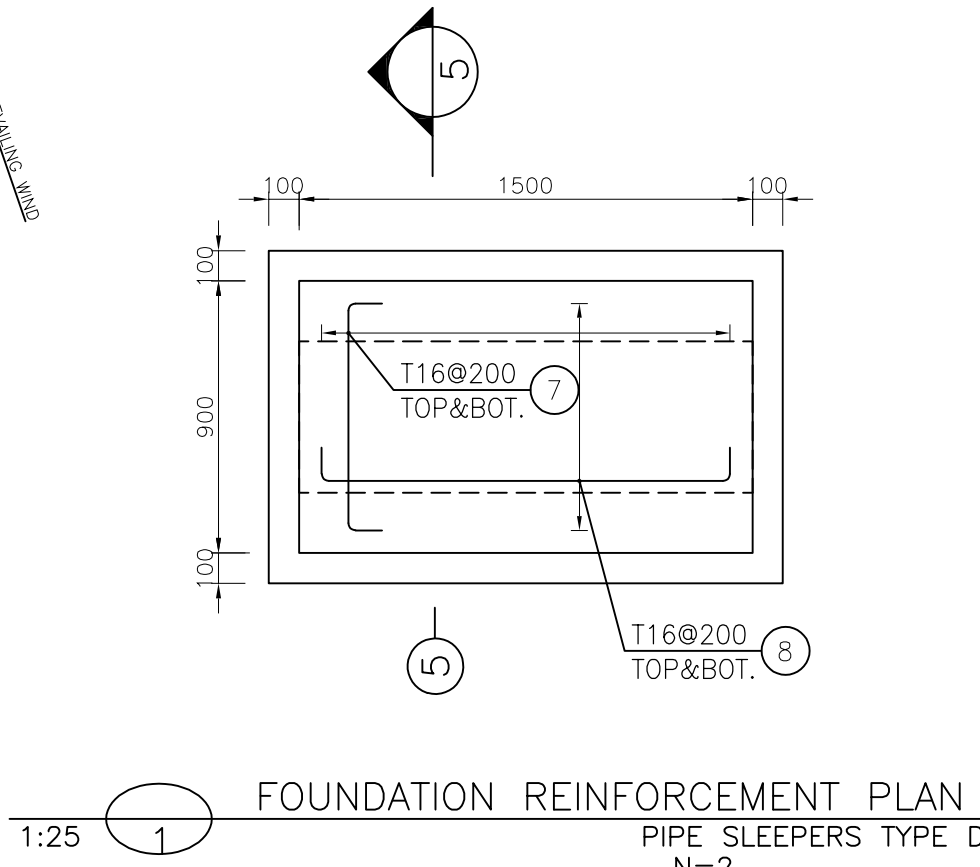
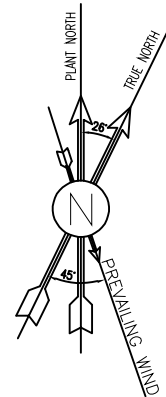
- NOTES
- 1) ALL ELEVATIONS AND COORDINATES ARE IN "m" AND DIMENSIONS ARE IN "mm" UNLESS OTHERWISE NOTED.
 - 2) ALL DIMENSIONS AND ELEVATIONS SHALL BE CHECKED BY THE CONTRACTOR PRIOR TO CONSTRUCTION.
 - 3) 28 DAYS CHARACTERISTIC COMPRESSIVE STRENGTH OF CONCRETE IS 30MPa. (ON CYLINDRICAL SPECIMEN)
 - 4) 28 DAYS CHARACTERISTIC COMPRESSIVE STRENGTH OF LEAN CONCRETE IS 15MPa. (ON CYLINDRICAL SPECIMEN)
 - 5) CONCRETE COVER OVER BARS SHALL BE 75mm FOR FOUNDATION AND 40mm FOR CAST IN-SITU OTHER PARTS.
 - 6) TENSION STRENGTH OF BARS SHALL BE OF MINIMUM $F_y=4000 \text{ kg/cm}^2$
 - 7) UNDERGROUND CONCRETE SHALL BE PROTECTED AND COATED ACCORDING TO RELEVANT SPECIFICATION.
 - 8) CEMENT TYPE II SHALL BE USED ACCORDING TO GEOTECHNICAL REPORT SUGGESTION.
 - 9) FILL MATERIAL SHALL BE COMPACTED TO NOT LESS THAN 95% OF THE MAXIMUM DENSITY AS DETERMINED BY ASTM D-1557 (MODIFIED PROCTOR) METHOD.
 - 10) REINFORCEMENT SHALL BE ADJUSTED LOCALLY TO SUIT THE RECESS OF ANCHOR BOLTS, HOLES AND OTHER EMBEDDED MATERIALS.
 - 11) THE EMULSION SHOULD BE USED ON CONCRETE EXPOSED WITH SOIL. B-90-COAT.M.E IS A BITUMEN-BASED ONE-COMPONENT EMULSION PROTECTIVE COATING TO PREVENT THE PENETRATION OF DESTRUCTIVE SALTS & IONS. THIS MATERIAL IS CONTROLLED ACCORDING TO THE FOLLOWING STANDARDS: ASTM D1227, ASTM D2939, ASTM D1640
- $\pm 0.00 = +11.20(\text{R.G.L.})\text{MSL}$

LEGEND	
R.G.L.	ROUGH GRADING LEVEL
T.O.F.	TOP OF FOUNDATION
B.O.F.	BOTTOM OF FOUNDATION
T.O.PED.	TOP OF PEDESTAL
H.P.P.	HIGH POINT OF PAVING
	REINFORCED CONCRETE
	LEAN CONCRETE
	GROUND

REFERENCE DRAWING	DRG. No.
STANDARD DRAWING FOR INSERT PLATES IN CONCRETE	BK-GNRL-PEDCO-000-ST-DW-0007
GENERAL NOTES - REINFORCED CONCRETE STRUCTURES	BK-GNRL-PEDCO-000-ST-DW-0012
STANDARD PIPE SUPPORT DRAWINGS	BK-GCS-PEDCO-120-PI-DW-0001
UNIT PLOT PLAN DRAWING	BK-GCS-PEDCO-120-PI-PY-0001



***	*****	** **	*** ****	** **	*** ****
REV.	DESCRIPTION	BY	DATE	BY	DATE
		CHECKED		REV. APPR.	
اصل و کلیه نسخ این نقشه و حق اقتباس متعلق به شرکت ملی مناطق نفت خیز جنوب میباشد.					
<div>THE ORIGINAL AND ALL COPIES OF THIS DRAWING TOGETHER WITH THE COPYRIGHT THEREIN ARE THE SOLE PROPERTY OF N.I.S.O.C./ FIELDS</div>					
BINAK OILFIELD DEVELOPMENT SURFACE FACILITIES GAS COMPRESSOR STATION					
DATE	SCALE	DRAWING BY	CHECKED BY	PROJECT ENG.	
NO CONSTRUCTION PERMITTED UNLESS DRAWING APPROVED					
APPROVED FOR CONSTRUCTION			BY:	DATE:	
BUDGET REF.	LOCATION	SIZE CLASS	SERIAL NO.	SHEET	REVISION
053-073-9184	F	4 Q	709181	05	D05



BAR BENDING SCHEDULE						
Pos	Spec.	Shape	L/A	No.	T12	T16
1	T16		1.25	142		177.50
2	T16		1.85	22		40.70
3	T16		2.05	16		32.80
4	T16		2.45	34		83.30
5	T16		1.55	48		74.40
6	T16		1.85	142		262.70
6	T12		1.85	28	51.80	
TOTAL LENGTH OR AREA (m)				51.80	671.40	
UNIT WEIGH (Kg/m)				0.888	1.578	
WEIGH (Kg)				46.00	1059.47	
GRAND TOTAL (Kg)					1106	

D05	MAY.2024	AFC	R.BERLOUBE	M.FAKHARIAN	S.PARAMAKPOUR	***
D04	MAR.2024	AFC	R.BERLOUBE	M.FAKHARIAN	S.PARAMAKPOUR	**
D03	JUN.2023	AFC	R.BERLOUBE	M.FAKHARIAN	A.M.MOHSSENI	**
D02	MAY.2023	IPA	R.BERLOUBE	M.FAKHARIAN	A.M.MOHSSENI	***
D01	MAR.2023	IPA	R.BERLOUBE	M.FAKHARIAN	M.MEHRSHAD	**
D00	JAN.2023	IPC	R.BERLOUBE	M.FAKHARIAN	M.MEHRSHAD	**
REV.	DATE	P.O.I.S	PREP.	CHK.	APP.	AUT.

PROJECT NAME: BINAK OILFIELD DEVELOPMENT/SURFACE FACILITIES GAS COMPRESSOR STATION

PROJECT NO.: 971020

EPC CONTRACTOR:		EPD/EPC CONTRACTOR (GC):	
HIRGAN ENERGY - DESIGN & INSPECTION COMPANIES		PEDCO	

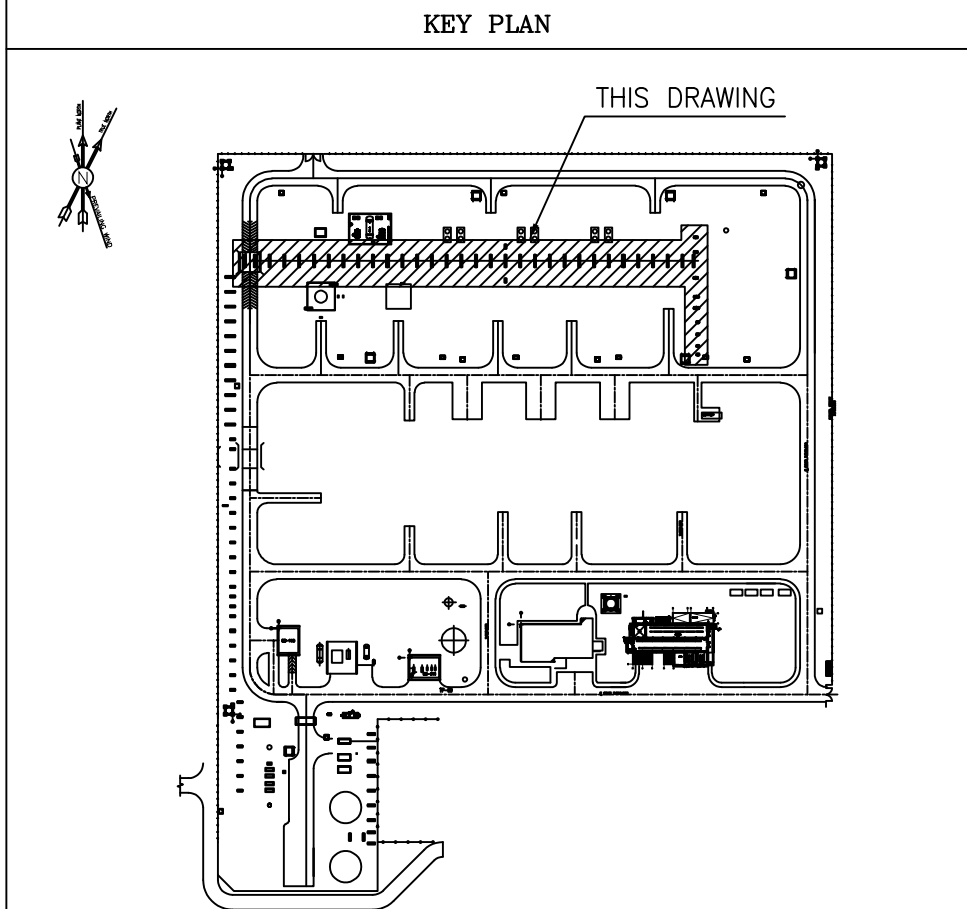
DRAWING TITLE:

SCALE	SIZE	DRAWING NO.	SHEET NO.	REV.
AS SHOWN	A1	BK-GCS-PEPCO-120-ST-DW-0044	06 OF 06	D05

- NOTES
- 1) ALL ELEVATIONS AND COORDINATES ARE IN "m" AND DIMENSIONS ARE IN "mm" UNLESS OTHERWISE NOTED.
 - 2) ALL DIMENSIONS AND ELEVATIONS SHALL BE CHECKED BY THE CONTRACTOR PRIOR TO CONSTRUCTION.
 - 3) 28 DAYS CHARACTERISTIC COMPRESSIVE STRENGTH OF CONCRETE IS 30MPa. (ON CYLINDRICAL SPECIMEN)
 - 4) 28 DAYS CHARACTERISTIC COMPRESSIVE STRENGTH OF LEAN CONCRETE IS 15MPa. (ON CYLINDRICAL SPECIMEN)
 - 5) CONCRETE COVER OVER BARS SHALL BE 75mm FOR FOUNDATION AND 40mm FOR CAST IN-SITU OTHER PARTS.
 - 6) TENSION STRENGTH OF BARS SHALL BE OF MINIMUM $F_y=4000 \text{ kg/cm}^2$
 - 7) UNDERGROUND CONCRETE SHALL BE PROTECTED AND COATED ACCORDING TO RELEVANT SPECIFICATION.
 - 8) CEMENT TYPE II SHALL BE USED ACCORDING TO GEOTECHNICAL REPORT SUGGESTION.
 - 9) FILL MATERIAL SHALL BE COMPACTED TO NOT LESS THAN 95% OF THE MAXIMUM DENSITY AS DETERMINED BY ASTM D-1557 (MODIFIED PROCTOR) METHOD.
 - 10) REINFORCEMENT SHALL BE ADJUSTED LOCALLY TO SUIT THE RECESS OF ANCHOR BOLTS, HOLES AND OTHER EMBEDDED MATERIALS.
 - 11) THE EMULSION SHOULD BE USED ON CONCRETE EXPOSED WITH SOIL. B-90-COAT.M.E IS A BITUMEN-BASED ONE-COMPONENT EMULSION PROTECTIVE COATING TO PREVENT THE PENETRATION OF DESTRUCTIVE SALTS & IONS. THIS MATERIAL IS CONTROLLED ACCORDING TO THE FOLLOWING STANDARDS: ASTM D1227, ASTM D2939, ASTM D1640
- $\pm 0.00 = +11.20(\text{R.G.L.})\text{MSL}$

LEGEND	
R.G.L.	ROUGH GRADING LEVEL
T.O.F.	TOP OF FOUNDATION
B.O.F.	BOTTOM OF FOUNDATION
T.O.PED.	TOP OF PEDESTAL
H.P.P.	HIGH POINT OF PAVING
	REINFORCED CONCRETE
	LEAN CONCRETE
	GROUND

REFERENCE DRAWING	DRG. No.
STANDARD DRAWING FOR INSERT PLATES IN CONCRETE	BK-GNRL-PEDCO-000-ST-DW-0007
GENERAL NOTES - REINFORCED CONCRETE STRUCTURES	BK-GNRL-PEDCO-000-ST-DW-0012
STANDARD PIPE SUPPORT DRAWINGS	BK-GCS-PEDCO-120-PI-DW-0001
UNIT PLOT PLAN DRAWING	BK-GCS-PEDCO-120-PI-PY-0001



THE ORIGINAL AND ALL COPIES OF THIS DRAWING TOGETHER WITH THE COPYRIGHT THEREIN ARE THE SOLE PROPERTY OF N.I.S.O.C./ FIELDS					
BINAK OILFIELD DEVELOPMENT SURFACE FACILITIES GAS COMPRESSOR STATION					
DATE	SCALE	DRAWING BY	CHECKED BY	PROJECT ENG.	
NO CONSTRUCTION PERMITTED UNLESS DRAWING APPROVED					
APPROVED FOR CONSTRUCTION			BY:	DATE:	
BUDGET REF.	LOCATION	SIZE CLASS	SERIAL NO.	SHEET	REVISION
AS SHOWN	A1	BK-GCS-PEPCO-120-ST-DW-0044	06 OF 06	D05	053-073-9184