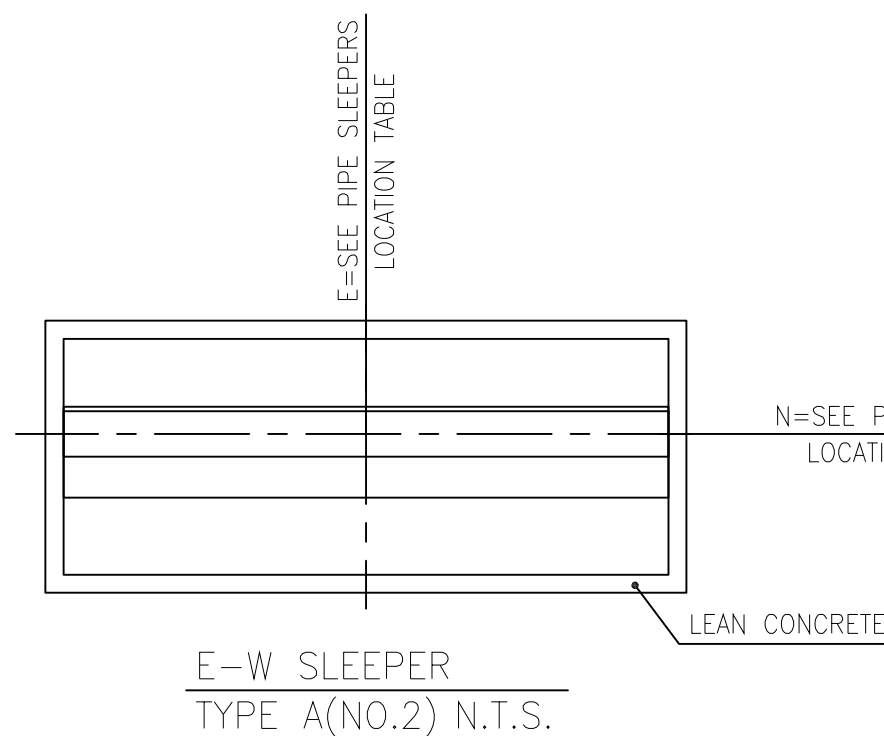

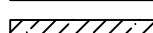
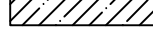


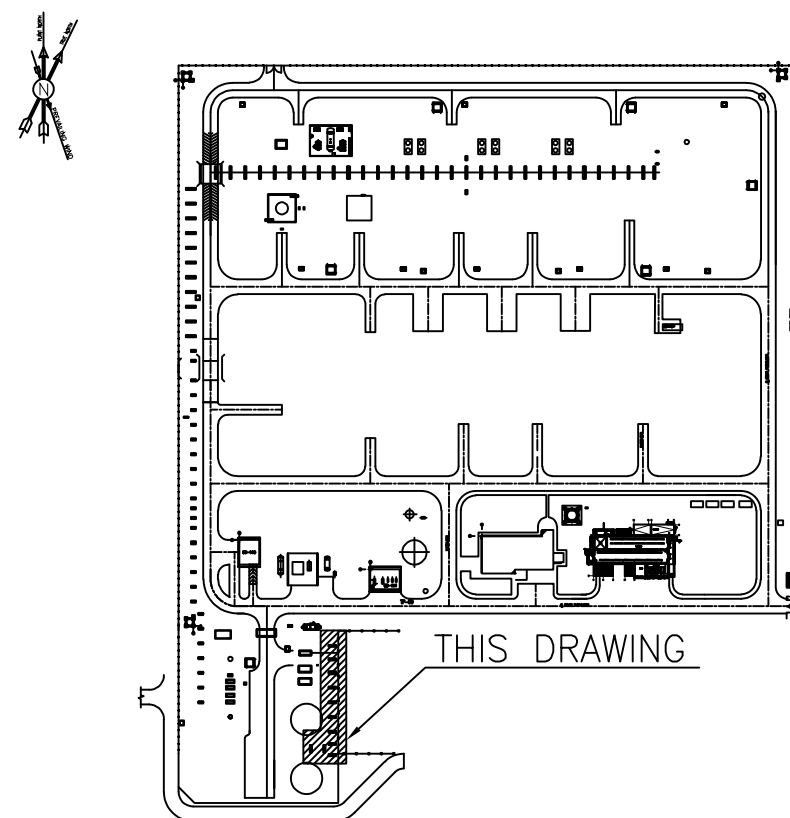
PIPE SLEEPERS LOCATION TABLE				
ITEM	TYPE	COORDINATES		T.O.PED
		E (m)	N (m)	
P.S.-01	B	562500	494000	+0.50
P.S.-02	B	562500	488500	+0.50
P.S.-03	B	562500	483000	+0.50
P.S.-04	A	562500	477000	+0.50
P.S.-05	A	562500	471000	+0.50
P.S.-06	B	562500	465000	+0.50
P.S.-07	B	562500	459000	+0.50
P.S.-08	B	562500	454000	+0.50
P.S.-09	B	562500	449500	+0.50
P.S.-10	B	559200	452000	+0.50
P.S.-11	B	553700	452000	+0.50

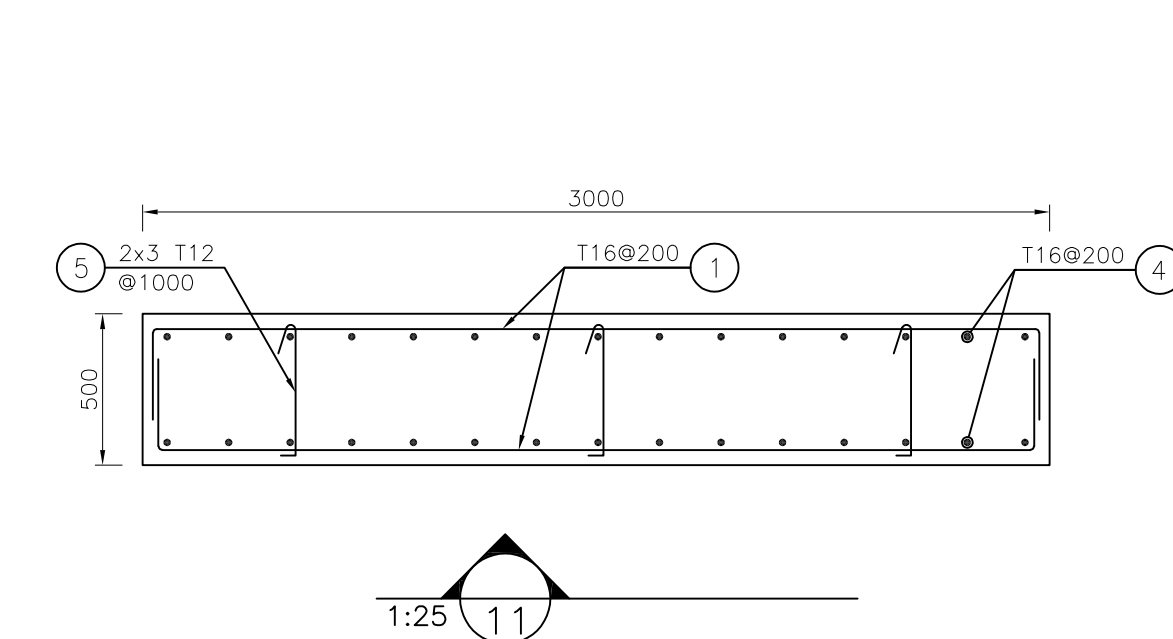
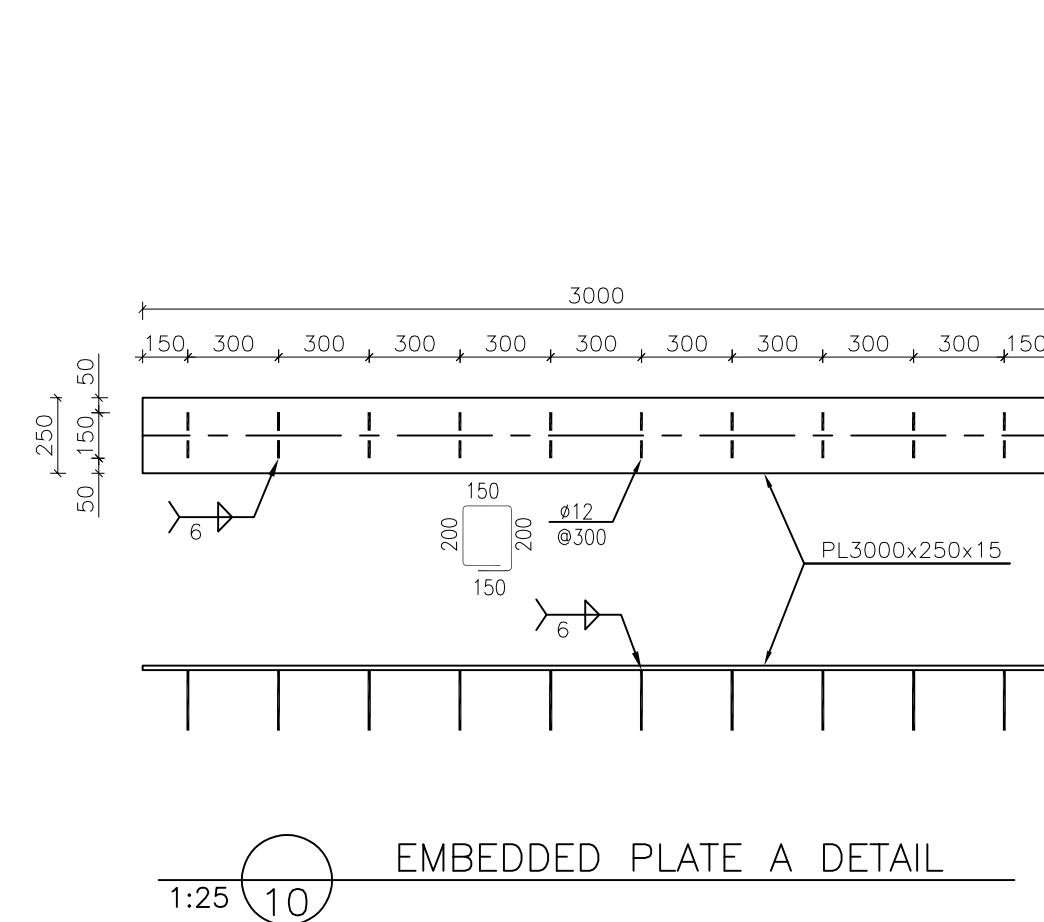
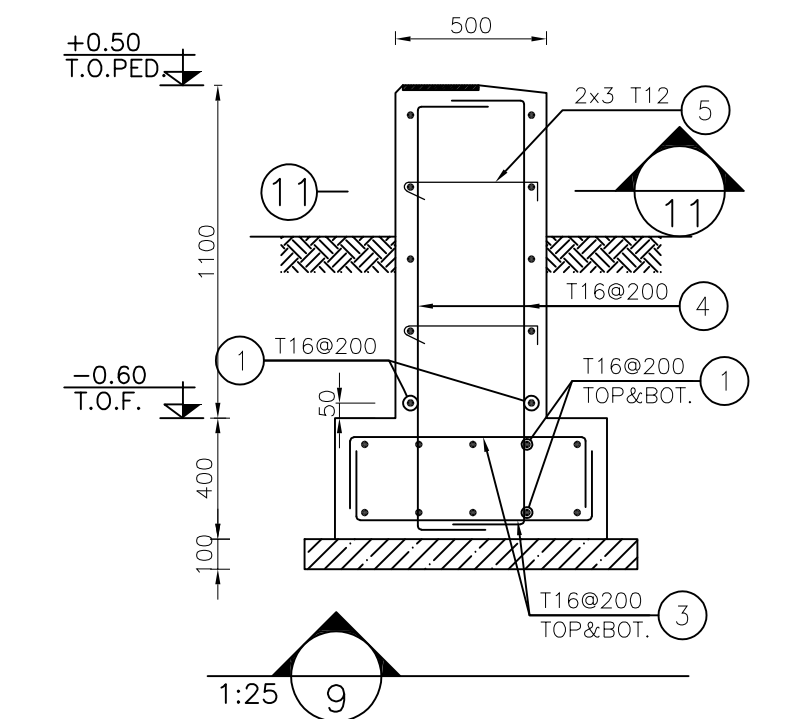
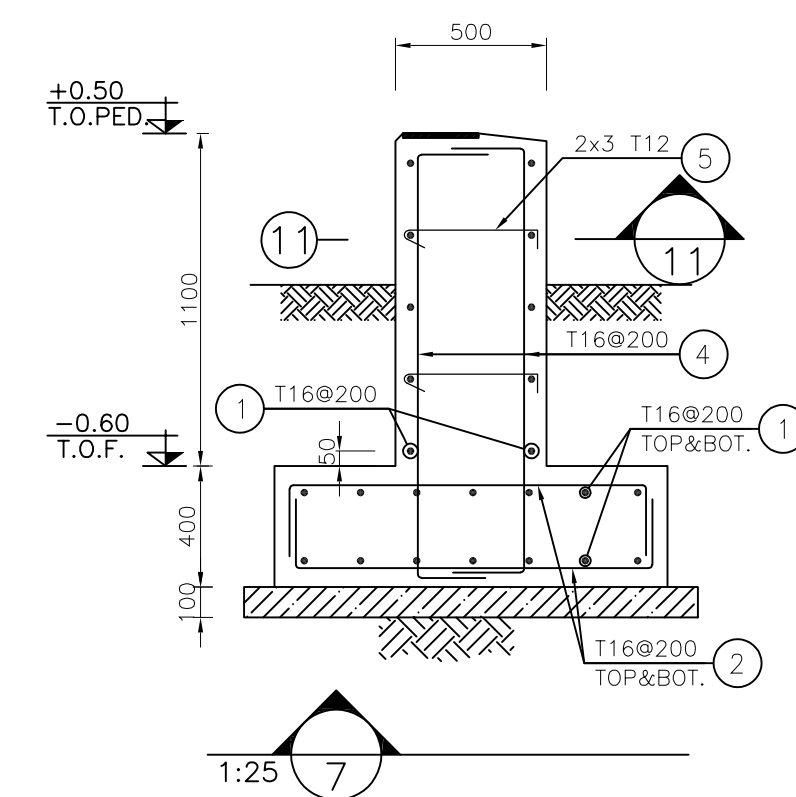
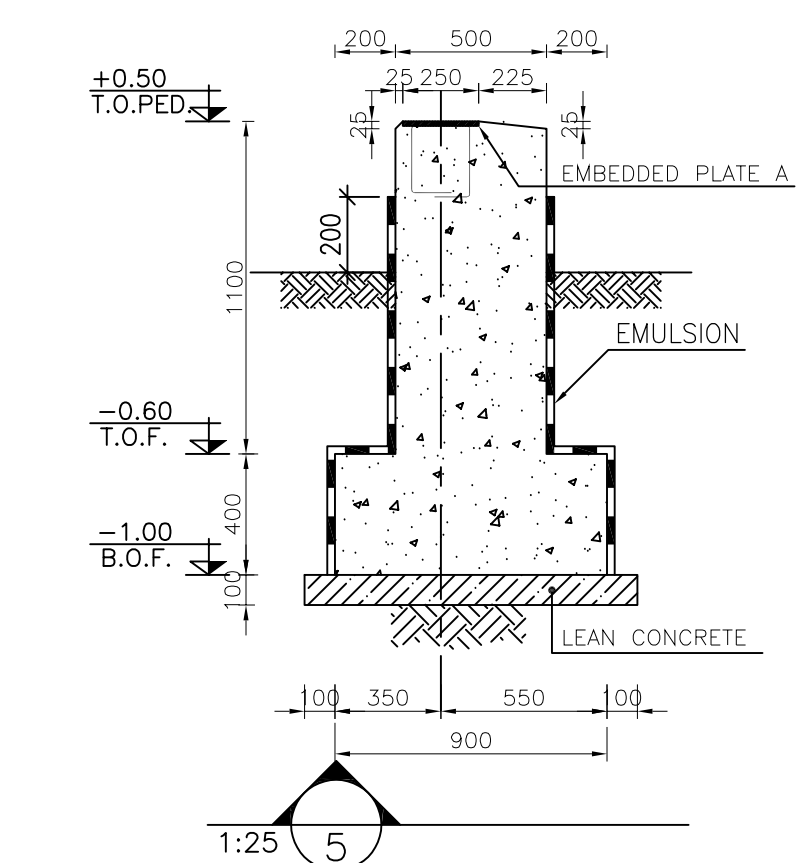
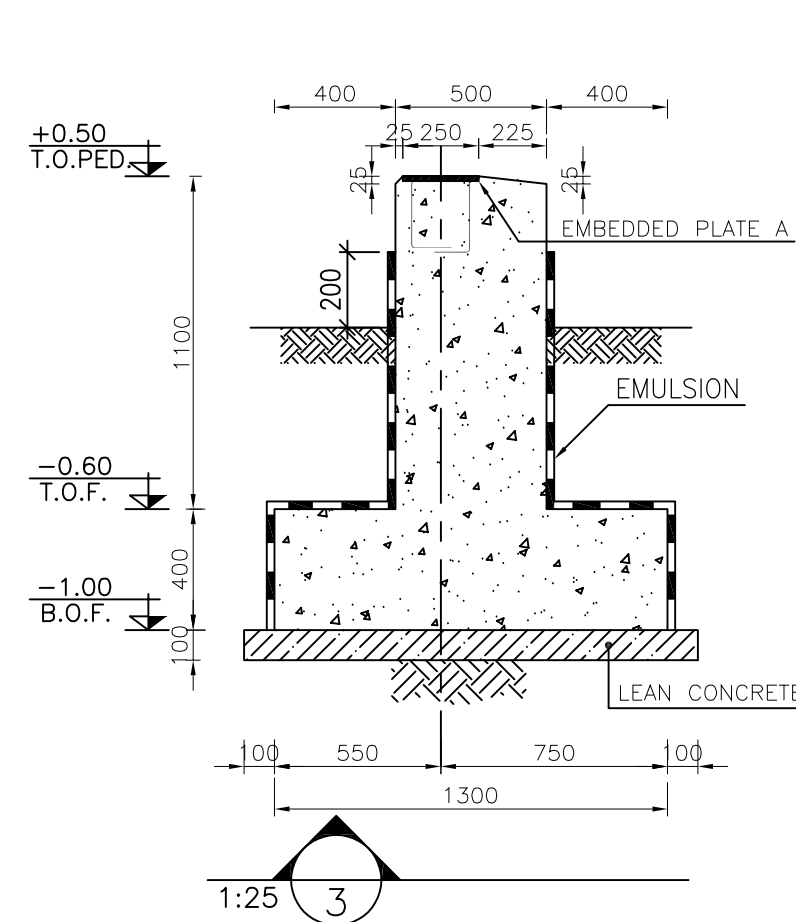
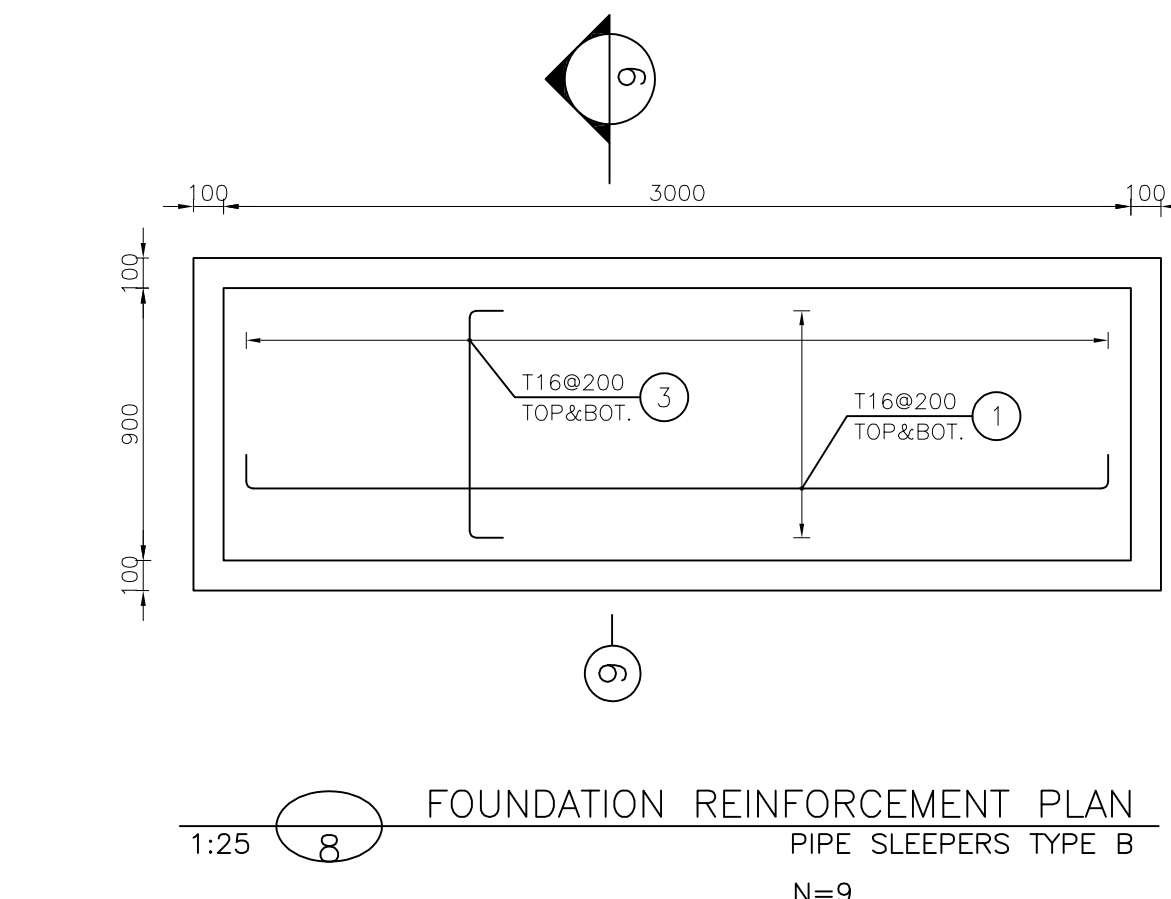
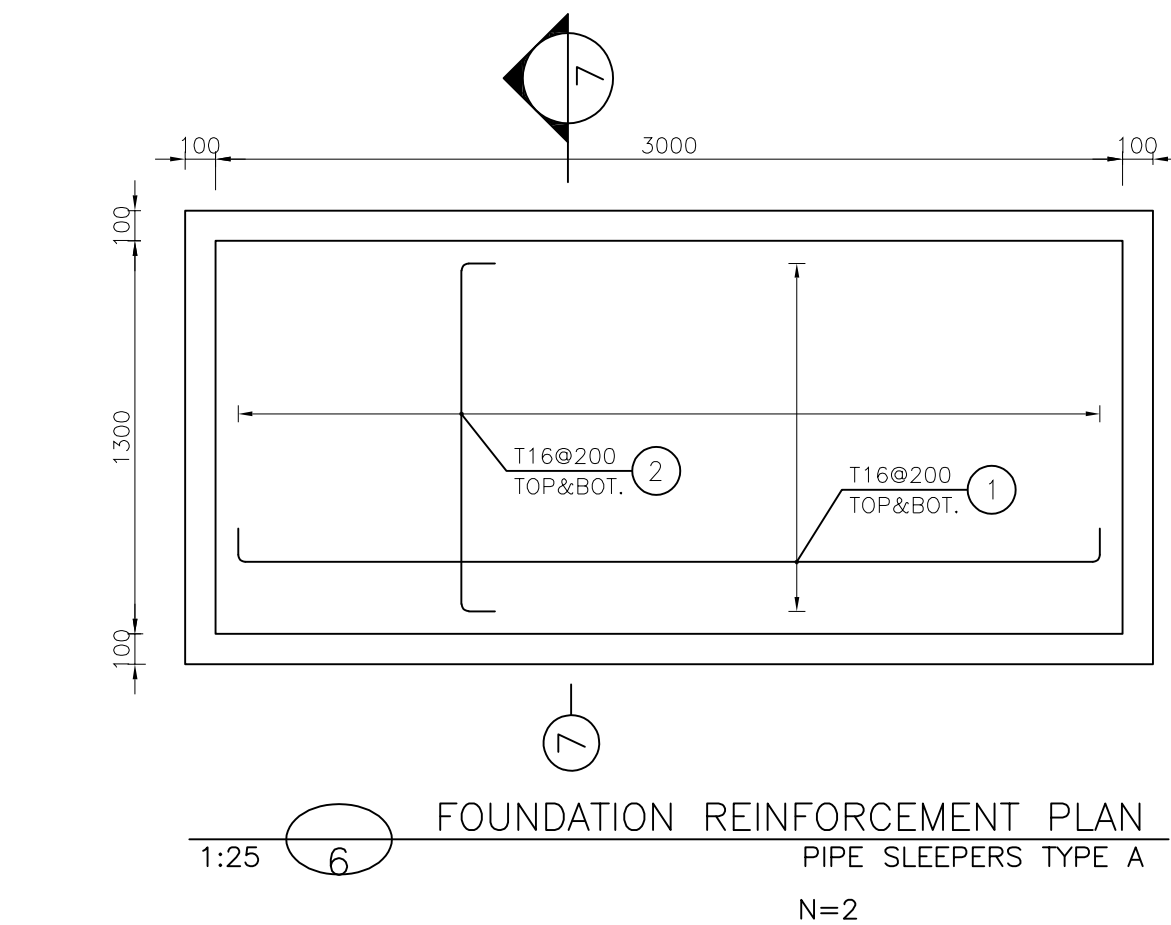
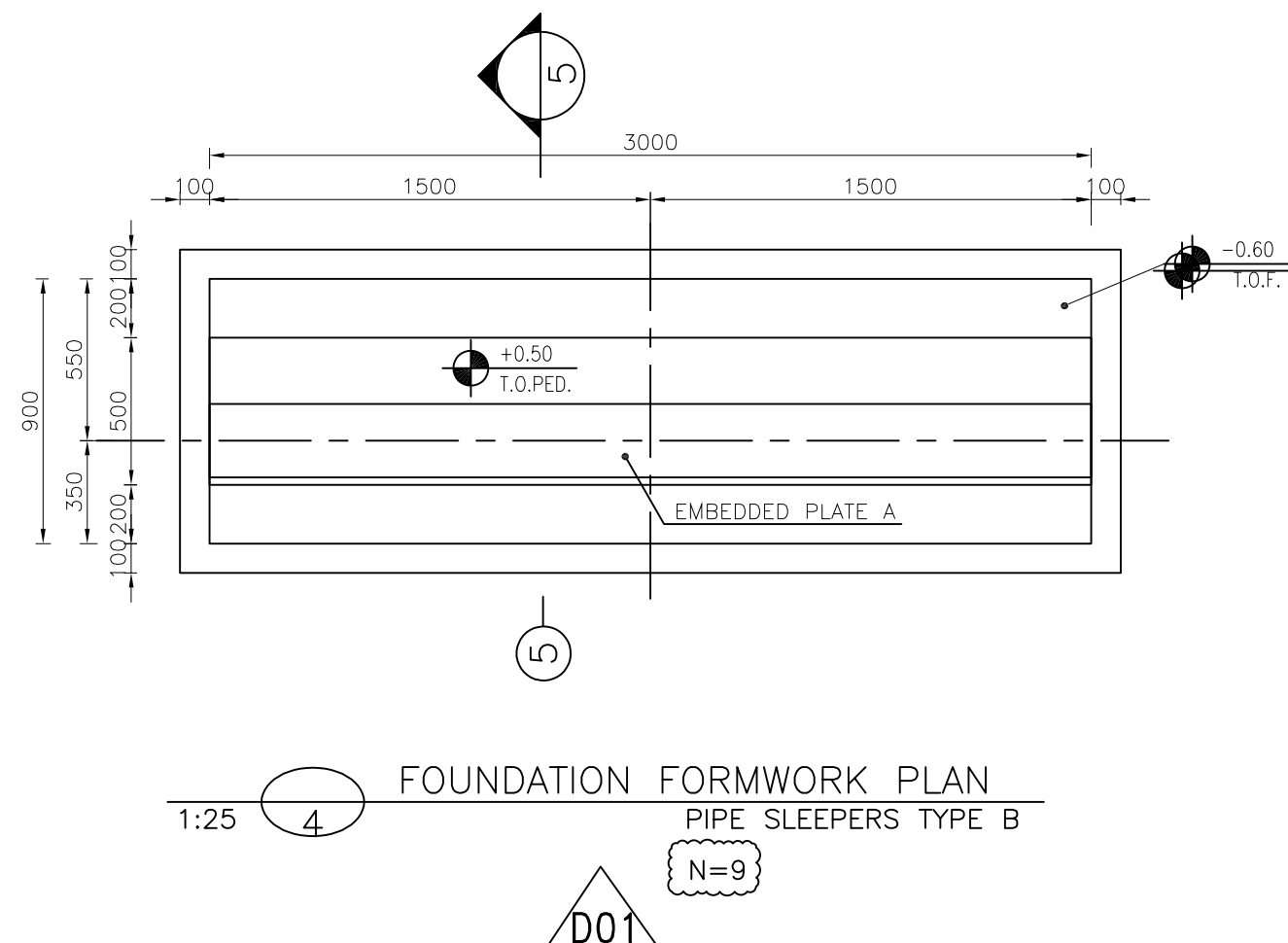
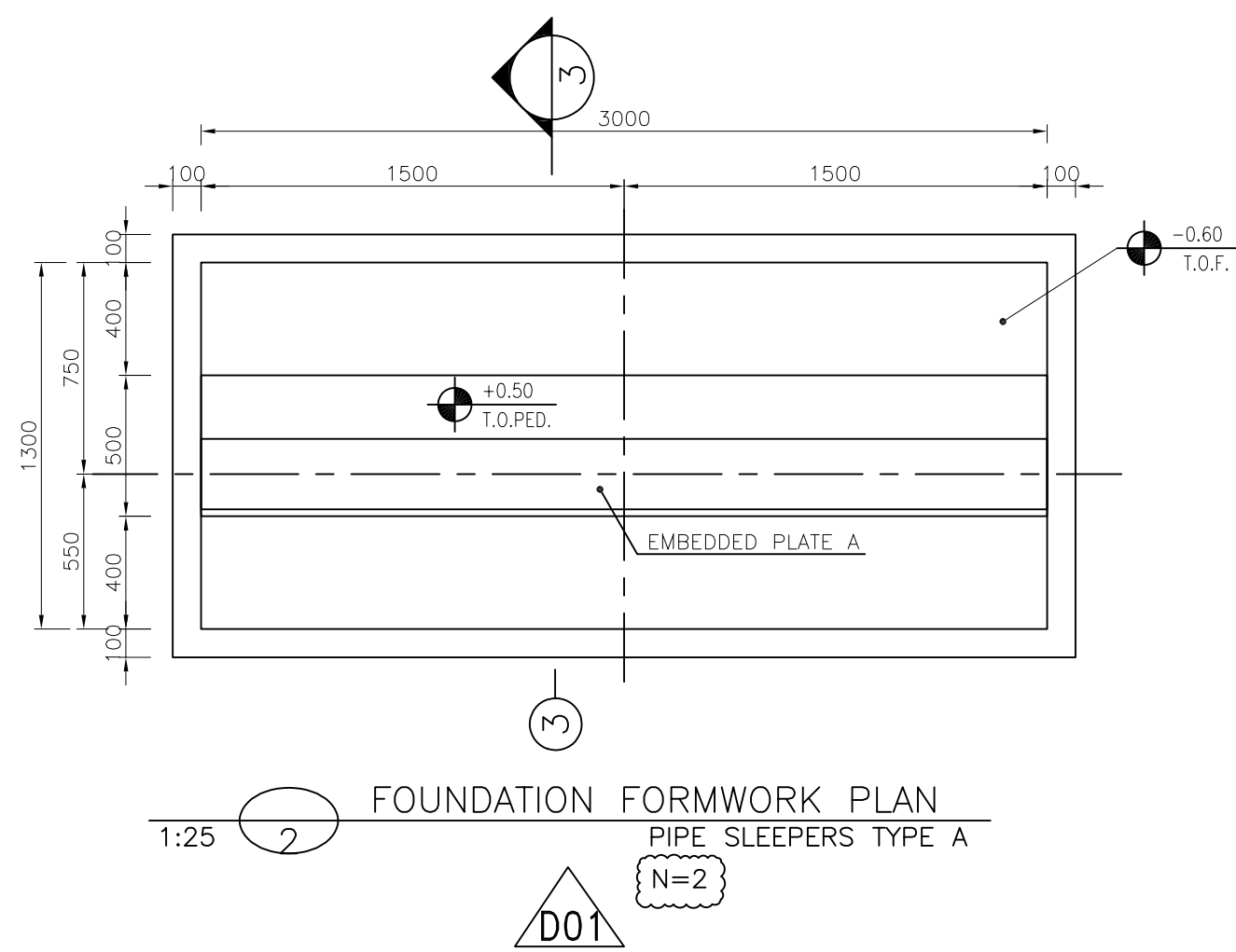
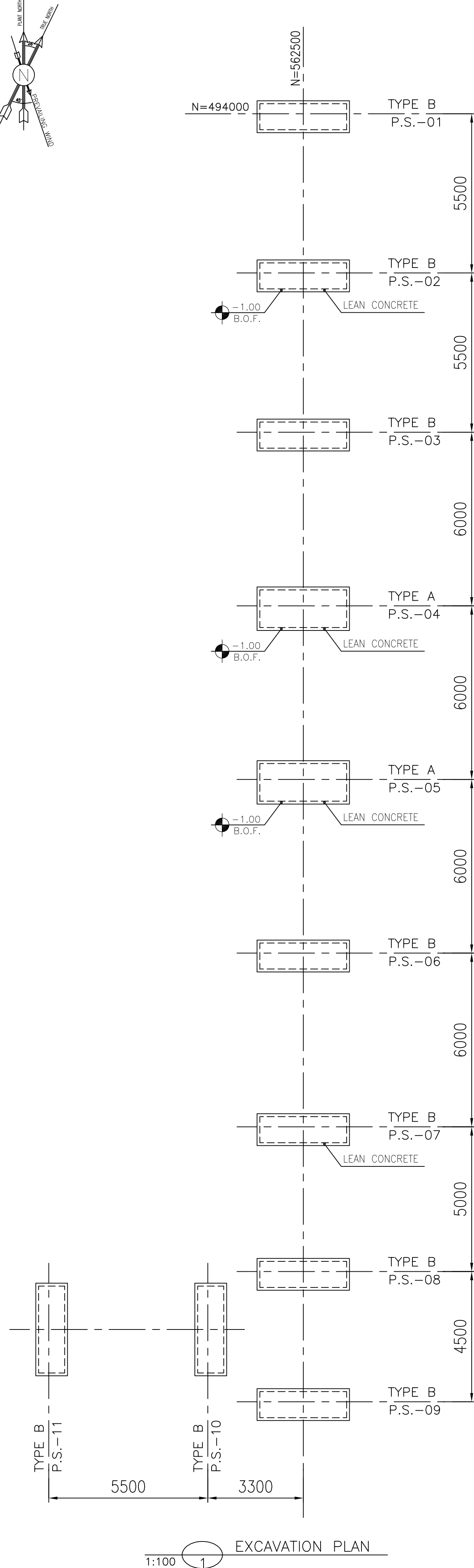
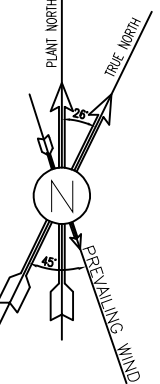


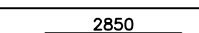
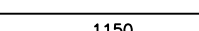
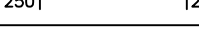

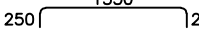
LEGEND	
R.G.L.	ROUGH GRADING LEVEL
T.O.F.	TOP OF FOUNDATION
B.O.F.	BOTTOM OF FOUNDATION
T.O.PED.	TOP OF PEDESTAL
H.P.P.	HIGH POINT OF PAVING
	REINFORCED CONCRETE
	LEAN CONCRETE
	GROUND

REFERENCE DRAWING	DRG. No.
STANDARD DRAWING FOR INSERT PLATES IN CONCRETE	BK-GNRL-PEDCO-000-ST-DW-0007
GENERAL NOTES - REINFORCED CONCRETE STRUCTURES	BK-GNRL-PEDCO-000-ST-DW-0012
STANDARD PIPE SUPPORT DRAWINGS	BK-GCS-PEDCO-120-PI-DW-0001
UNIT PLOT PLAN DRAWING	BK-GCS-PEDCO-120-PI-PY-0001

KEY PLAN

[illegible]



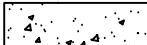
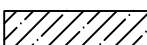

BAR BENDING SCHEDULE						
Pos	Spec.	Shape	L/A	No.	T12	T16
1	T16		3.35	174		582.90
2	T16		1.65	60		99.00
3	T16		1.25	270		337.50
4	T16		1.85	330		610.5
5	T12		0.60	66	39.60	
TOTAL LENGTH OR AREA (m)					39.60	1629.90
UNIT WEIGHT (Kg/m)					0.888	1.578
WEIGHT (Kg)					35.16	2571.98
GRAND TOTAL (Kg)					2607	9g

[illegible]

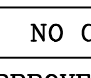
- NOTES**

 - 1) ALL ELEVATIONS AND COORDINATES ARE IN "m" AND DIMENSIONS ARE IN "mm" UNLESS OTHERWISE NOTED.
 - 2) ALL DIMENSIONS AND ELEVATIONS SHALL BE CHECKED BY THE CONTRACTOR PRIOR TO CONSTRUCTION.
 - 3) 28 DAYS CHARACTERISTIC COMPRESSIVE STRENGTH OF CONCRETE IS 30MPa. (ON CYLINDRICAL SPECIMEN)
 - 4) 28 DAYS CHARACTERISTIC COMPRESSIVE STRENGTH OF LEAN CONCRETE IS 15MPa. (ON CYLINDRICAL SPECIMEN)
 - 5) CONCRETE COVER OVER BARS SHALL BE 75mm FOR FOUNDATION AND 40mm FOR CAST IN-SITU OTHER PARTS.
 - 6) TENSION STRENGTH OF BARS SHALL BE OF MINIMUM $F_y = 4000 \text{ kg/cm}^2$
 - 7) UNDERGROUND CONCRETE SHALL BE PROTECTED AND COATED ACCORDING TO RELEVANT SPECIFICATION.
 - 8) CEMENT TYPE II SHALL BE USED ACCORDING TO GEOTECHNICAL REPORT SUGGESTION.
 - 9) FILL MATERIAL SHALL BE COMPACTED TO NOT LESS THAN 95% OF THE MAXIMUM DENSITY AS DETERMINED BY ASTM D-1557 (MODIFIED PROCTOR) METHOD.
 - 10) REINFORCEMENT SHALL BE ADJUSTED LOCALLY TO SUIT THE RECESS OF ANCHOR BOLTS, HOLES AND OTHER EMBEDDED MATERIALS.
 - 11) THE EMULSION SHOULD BE USED ON CONCRETE EXPOSED WITH SOIL. B-90-COAT.M.E IS A BITUMEN-BASED ONE-COMPONENT EMULSION PROTECTIVE COATING TO PREVENT THE PENETRATION OF DESTRUCTIVE SALTS & IONS.

THIS MATERIAL IS CONTROLLED ACCORDING TO THE FOLLOWING STANDARDS: ASTM D1227, ASTM D2939, ASTM D1640

±0.00 = +11.15(F.G.L.)MSL	
LEGEND	
R.G.L.	ROUGH GRADING LEVEL
T.O.F.	TOP OF FOUNDATION
B.O.F.	BOTTOM OF FOUNDATION
T.O.PED.	TOP OF PEDESTAL
H.P.P.	HIGH POINT OF PAVING
	REINFORCED CONCRETE
	LEAN CONCRETE
	GROUND
REFERENCE DRAWING	DRG. No.
STANDARD DRAWING FOR INSERT PLATES IN CONCRETE	BK-GNRL-PEDCO-000-ST-DW-0007
GENERAL NOTES - REINFORCED CONCRETE STRUCTURES	BK-GNRL-PEDCO-000-ST-DW-0012
STANDARD PIPE SUPPORT DRAWINGS	BK-GCS-PEDCO-120-PI-DW-0001
UNIT PLOT PLAN DRAWING	BK-GCS-PEDCO-120-PI-PY-0001

The first two steps are relatively straightforward. The third step involves identifying the specific components of the system that are most likely to cause problems. This can be done by reviewing the system's design documentation, conducting interviews with users, or performing a detailed analysis of the system's behavior. Once the components have been identified, the next step is to develop a plan for testing each component. This plan should specify the test cases to be used, the expected results, and the criteria for success.

***	*****	** **	*** ****	** **		**** *			
REV.	DESCRIPTION	BY	DATE	BY	DATE				
		CHECKED		REV.	APPR.				
اصول و کلیه نسخ نقش و حق اقتباس متعلق به شرکت ملی مایعات نفت خیز جنوب میباشد.									
 THE ORIGINAL AND ALL COPIES OF THIS DRAWING TOGETHER WITH THE AUTHORITY THEREIN ARE THE SOLE PROPERTY OF N.I.S.O.C./ FIELDS									
BINAK OILFIELD DEVELOPMENT SURFACE FACILITIES GAS COMPRESSOR STATION									
DATE	SCALE	DRAWING BY	CHECKED BY	PROJECT ENG.					
NO CONSTRUCTION PERMITTED UNLESS DRAWING APPROVED									
APPROVED FOR CONSTRUCTION		BY:		DATE:					
BUDGET REF.	LOCATION	SIZE	CLASS	SERIAL NO.	SHEET	REVISION			
063-073-9184	F	4	Q	7091B3	02	D02			