

1:100 PIPE SUPPORT FOUNDATION PLAN

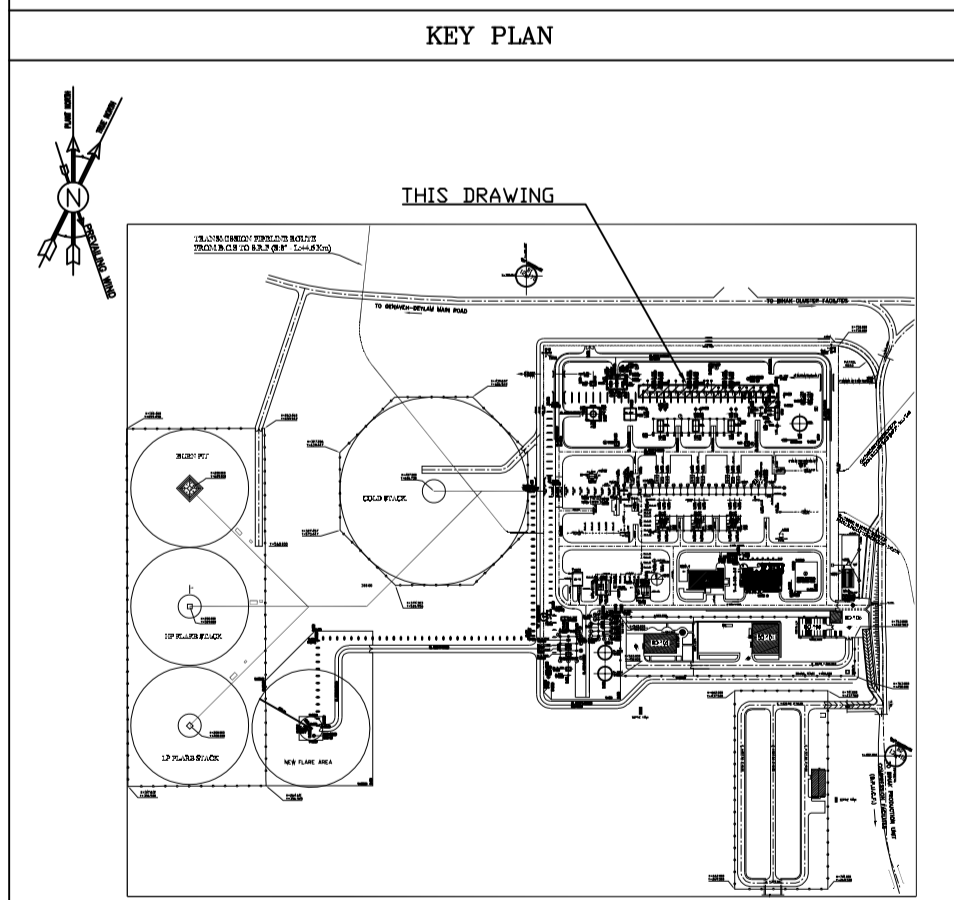
- NOTES**
- 1) ALL ELEVATIONS AND COORDINATES ARE IN "m" AND DIMENSIONS ARE IN "mm" UNLESS OTHERWISE NOTED.
 - 2) ALL DIMENSIONS AND ELEVATIONS SHALL BE CHECKED BY THE CONTRACTOR PRIOR TO CONSTRUCTION.
 - 3) ACCORDING TO THE SPECIFICATION OF CONCRETE WORKS:
"BK-GNRL-PEDCO-000-ST-SP-0001", 28 DAYS CHARACTERISTIC COMPRESSIVE STRENGTH OF MAIN CONCRETE IS 30 MPa (ON CYLINDRICAL SPECIMEN)
 - 4) ACCORDING TO THE SPECIFICATION OF CONCRETE WORKS:
"BK-GNRL-PEDCO-000-ST-SP-0001", 28 DAYS CHARACTERISTIC COMPRESSIVE STRENGTH OF LEAN CONCRETE IS 15 MPa (ON CYLINDRICAL SPECIMEN)
 - 5) CONCRETE COVER OVER BARS SHALL BE 75mm FOR FOUNDATION AND 50mm FOR PEDESTALS.
 - 6) REINFORCING BARS SHALL BE S400 ACCORDING TO: ISIRI1312 AND INBC9 WITH MINIMUM TENSILE YIELD STRENGTH 400 N/mm²
 - 7) UNDERGROUND CONCRETE SHALL BE PROTECTED AND COATED ACCORDING TO RELEVANT SPECIFICATION.
 - 8) CEMENT TYPE II SHALL BE USED ACCORDING TO GEOTECHNICAL REPORT SUGGESTION.
 - 9) FILL MATERIAL SHALL BE COMPACTED TO NOT LESS THAN 95% OF THE MAXIMUM DENSITY AS DETERMINED BY ASTM D-1557 (MODIFIED PROCTOR) METHOD.
 - 10) REINFORCEMENT SHALL BE ADJUSTED LOCALLY TO SUIT THE RECESS OF ANCHOR BOLTS, HOLES AND OTHER EMBEDDED MATERIALS.
 - 11) THE EMULSION SHOULD BE USED ON CONCRETE EXPOSED WITH SOIL. B-99-COAT.M.E IS A BITUMEN-BASED ONE-COMPONENT EMULSION PROTECTIVE COATING TO PREVENT THE PENETRATION OF DESTRUCTIVE SALTS & IONS. THIS MATERIAL IS CONTROLLED ACCORDING TO THE FOLLOWING STANDARDS: ASTM D1227, ASTM D2939, ASTM D1640

±0.00 = +11.20(F.G.L)MSL

LEGEND

	REINFORCED CONCRETE	F.G.L. : FINISH GROUND LEVEL
	LEAN CONCRETE	T.O.G. : TOP OF GROUT
	GROUND	T.O.F. : TOP OF FOUNDATION
		T.O.S. : TOP OF STEEL
		P.S. : PIPE SUPPORT

REFERENCE DRAWING	DRG. No.
GENERAL NOTES - STEEL STRUCTURES	BK-GNRL-PEDCO-00-ST-DW-0012
STRUCTURAL DRAWING FOR SPECIAL PIPE SUPPORTS	BK-GCS-PEDCO-120-ST-DW-0050
GENERAL NOTES - REINFORCEMENT CONCRETE STRUCTURES	BK-GNRL-PEDCO-000-ST-DW-0012
SPECIFICATION FOR EARTH WORK	BK-GNRL-PEDCO-000-CY-SP-0004
UNIT PLOT PLAN DRAWING	BK-GCS-PEDCO-120-PI-PY-0001
SPECIAL PIPE SUPPORT DRAWINGS	BK-GCS-PEDCO-120-PI-DW-0009
SPECIFICATION FOR GROUTING WORK	BK-GNRL-PEDCO-000-ST-SP-0001
SPECIFICATION FOR GROUTING	BK-GNRL-PEDCO-000-ST-SP-0004
STANDARD DRAWING FOR ANCHOR BOLTS	BK-GNRL-PEDCO-000-SP-DW-0062
GEOTECHNICAL INVESTIGATION REPORT FOR COMPRESSOR STATION	BK-GCS-PEDCO-120-GT-RT-0001



REV.	DATE	DESCRIPTION	BY	DATE	CHECKED	REV. APPR.
D01	MAY.2024	IFA	R.BERLOUE	M.FAKHARIAN	S.PARAMARZPOUR	**
D00	MAR.2024	IPC	R.BERLOUE	M.FAKHARIAN	S.PARAMARZPOUR	**

PROJECT NAME: BINAK OILFIELD DEVELOPMENT/SURFACE FACILITIES GAS COMPRESSOR STATION

PROJECT NO.: 971020

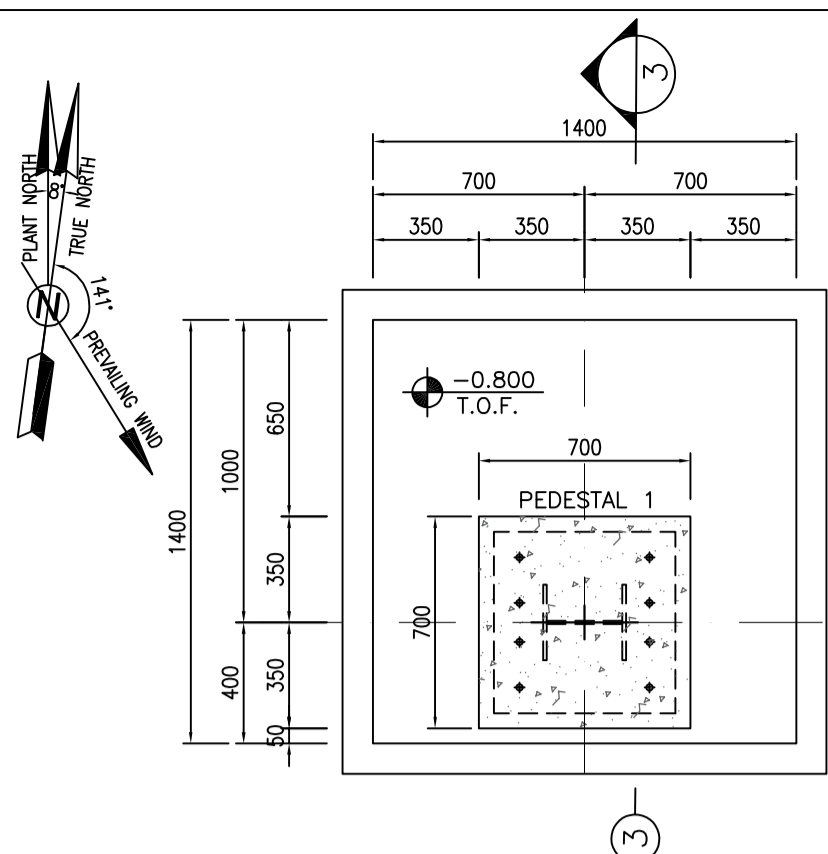
EPC CONTRACTOR: HIRGAN ENERGY - DESIGN & INSPECTION COMPANIES

EPD/EPC CONTRACTOR (GC): PETROIRAN DEVELOPMENT COMPANY

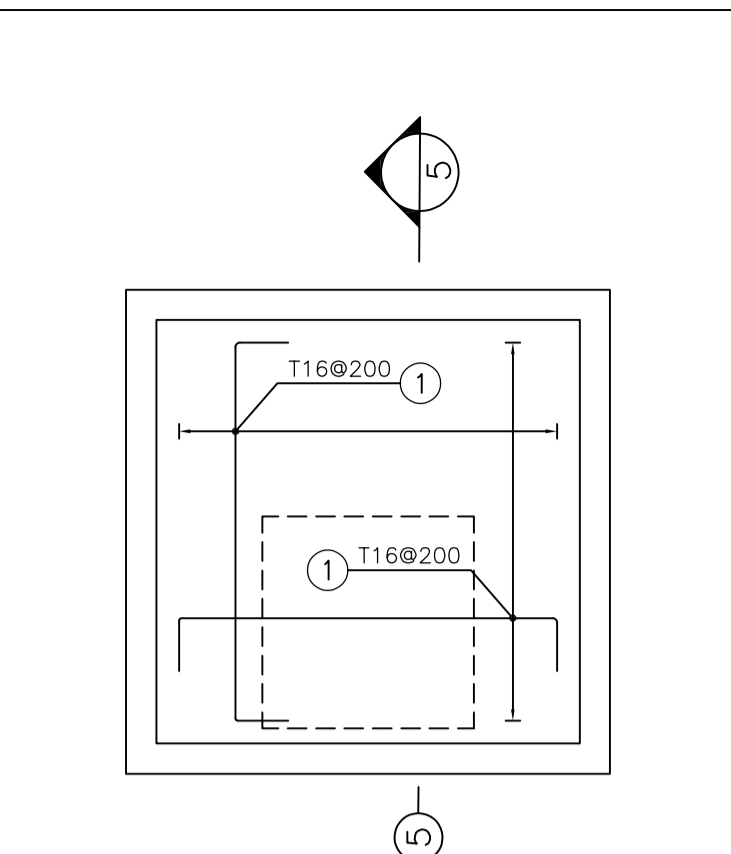
DRAWING TITLE: FOUNDATION DRAWING FOR PIPE SUPPORTS

NO CONSTRUCTION PERMITTED UNLESS DRAWING APPROVED

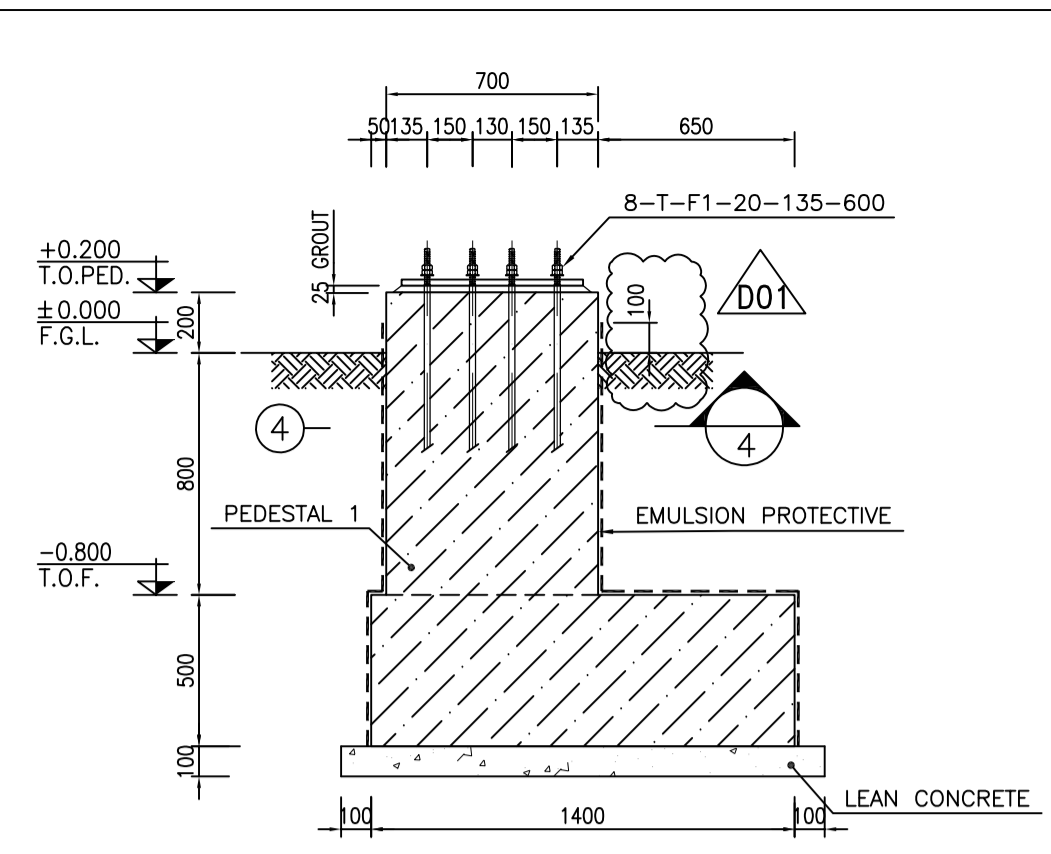
SCALE	SIZE	DRAWING NO.	SHEET NO.	REV.	BUDGET REF.	LOCATION	SIZE CLASS	SERIAL NO.	SHEET	REVISION
AS SHOWN	A1	BK-GCS-PEDCO-120-ST-DW-0049	1 OF 2	D01	053-073-9184	F	4	Q	709186	1



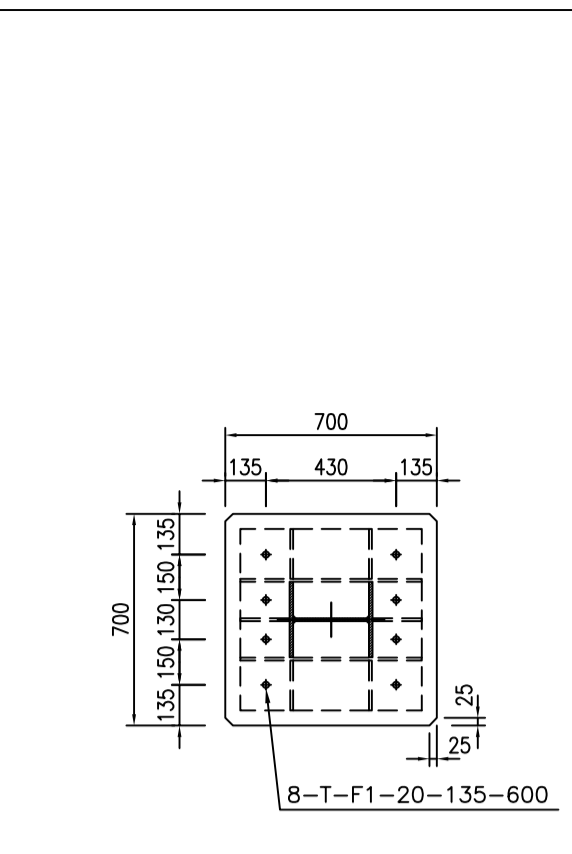
FOUNDATION PLAN F-1
FORMWORK
NO.=2



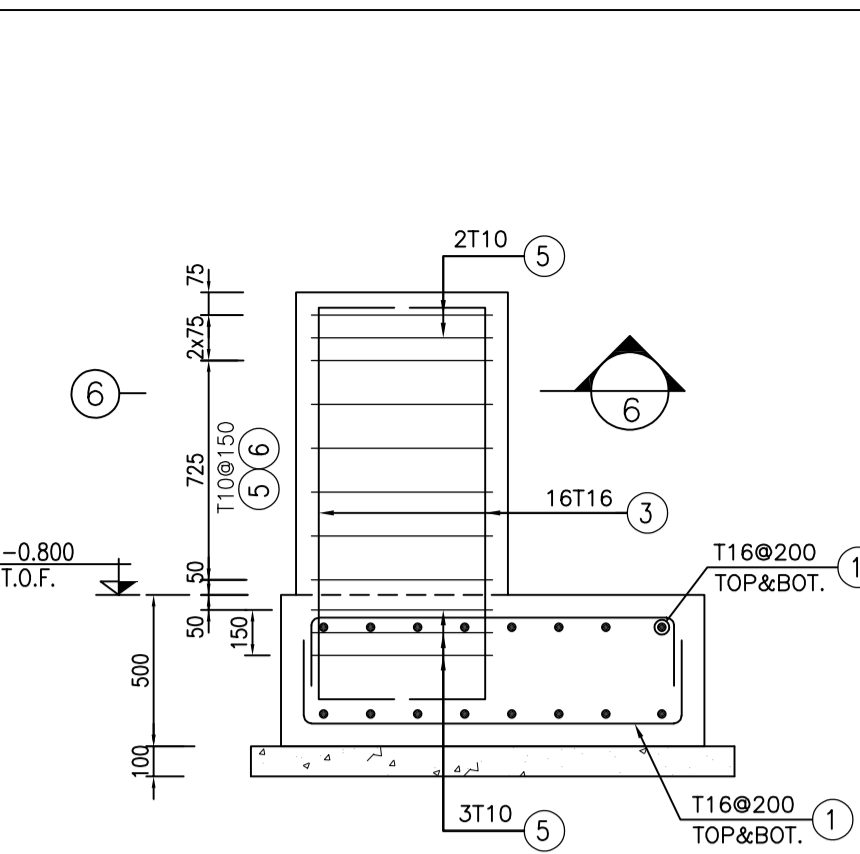
FOUNDATION PLAN F-1
REINFORCEMENT
NO.=2



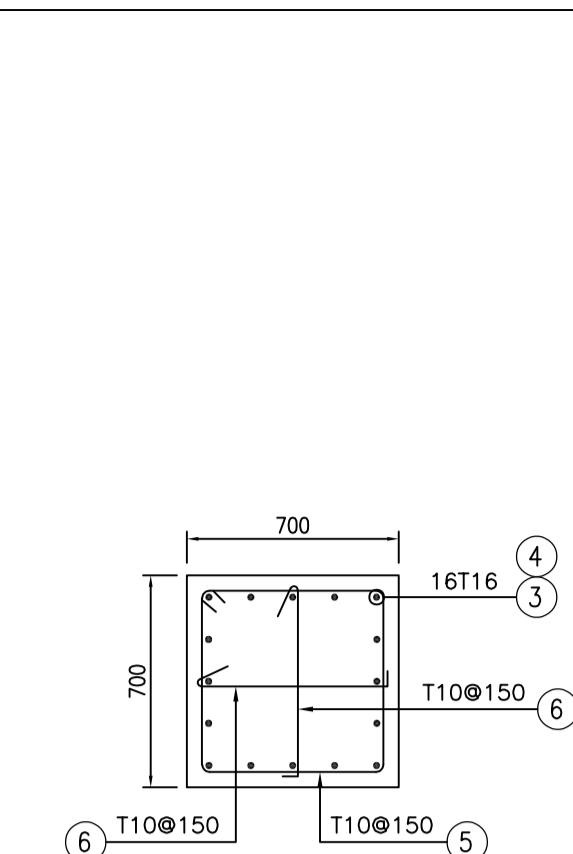
FOUNDATION PLAN F-1
FORMWORK
NO.=20



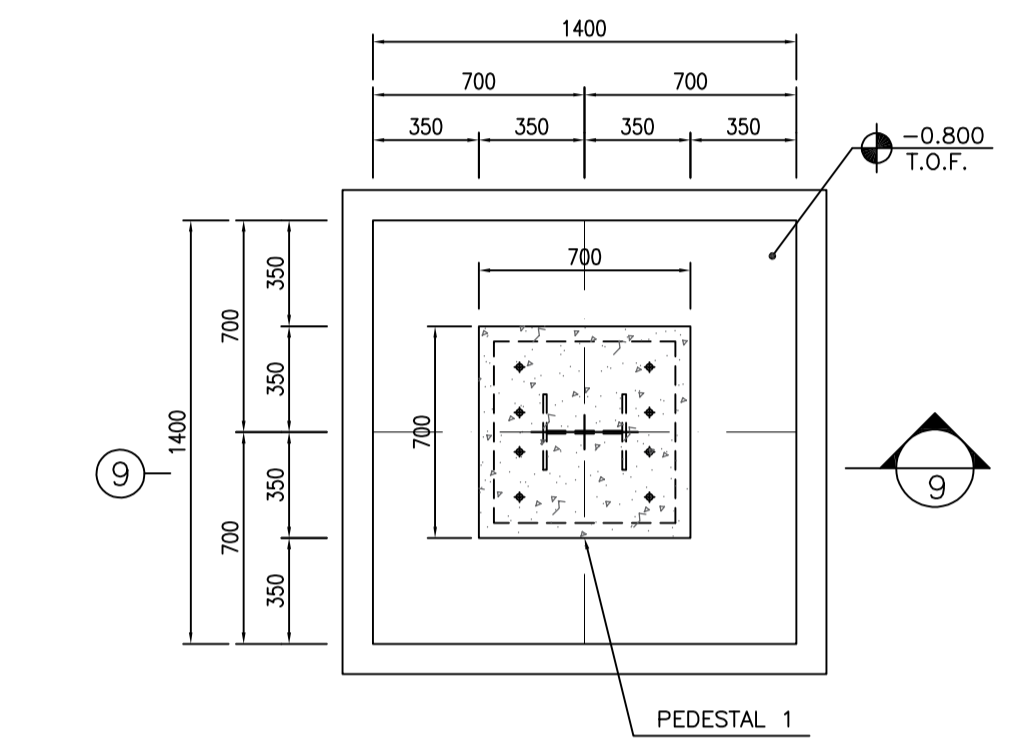
FOUNDATION PLAN F-1
REINFORCEMENT
NO.=20



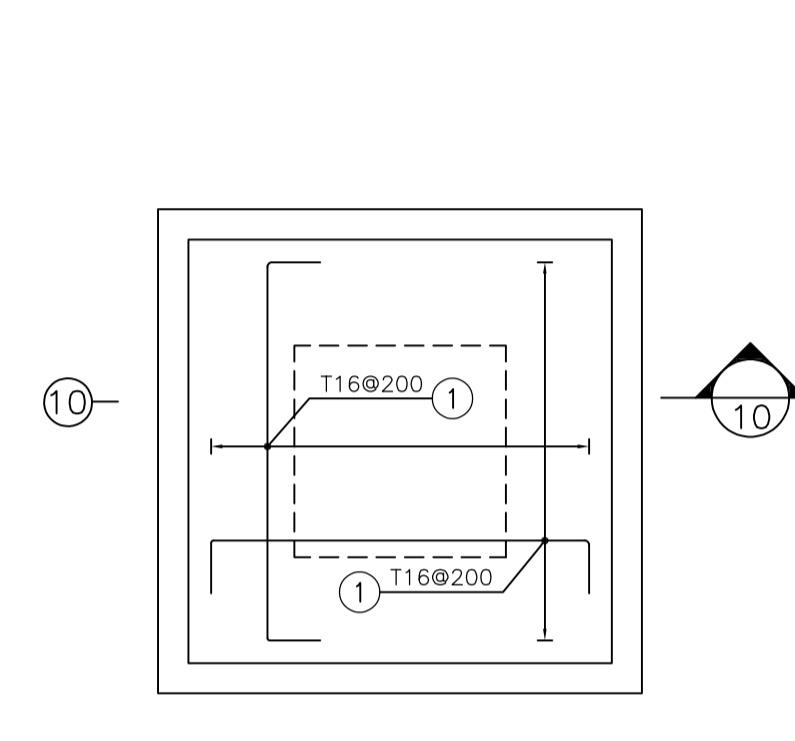
FOUNDATION PLAN F-1
REINFORCEMENT
NO.=20



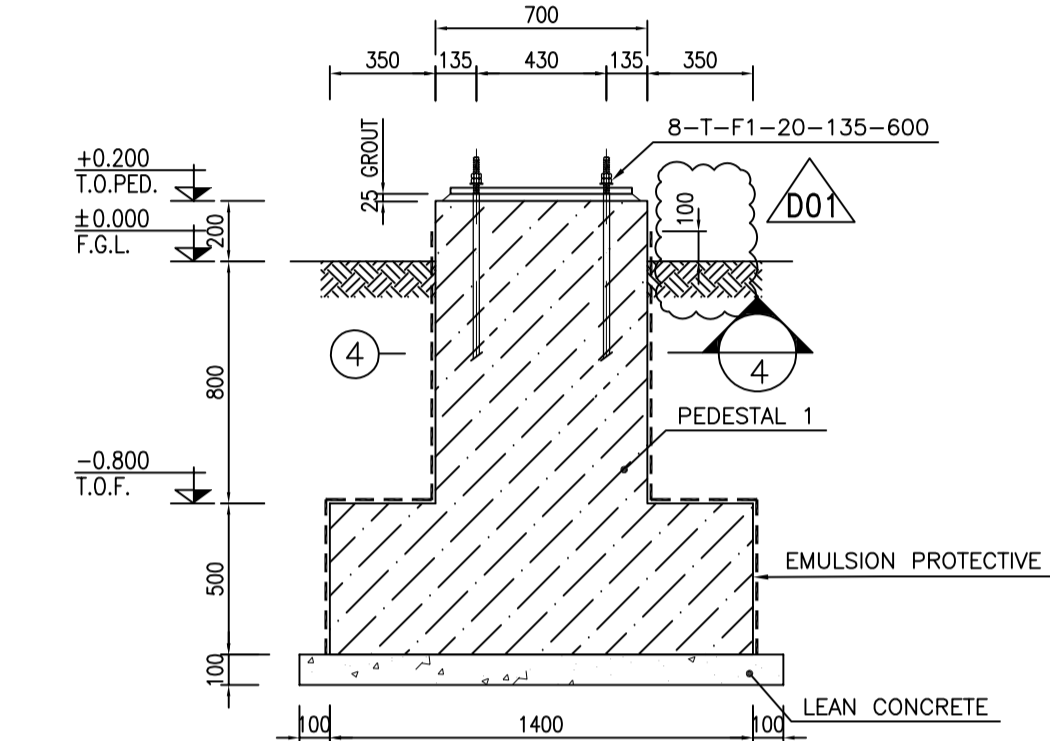
FOUNDATION PLAN F-1
REINFORCEMENT
NO.=20



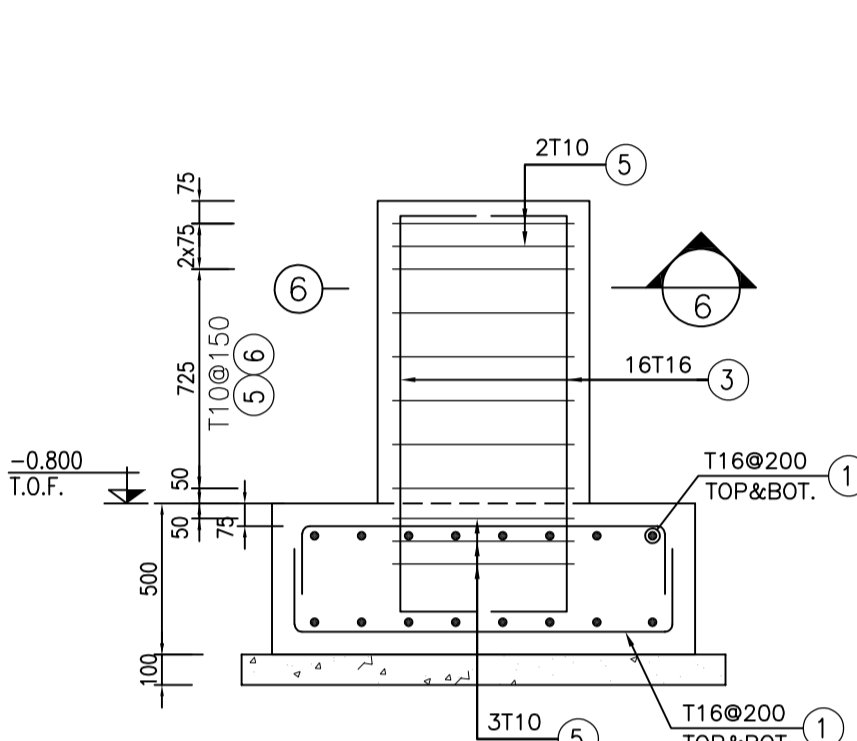
FOUNDATION PLAN F-2
FORMWORK
NO.=16



FOUNDATION PLAN F-2
REINFORCEMENT
NO.=16

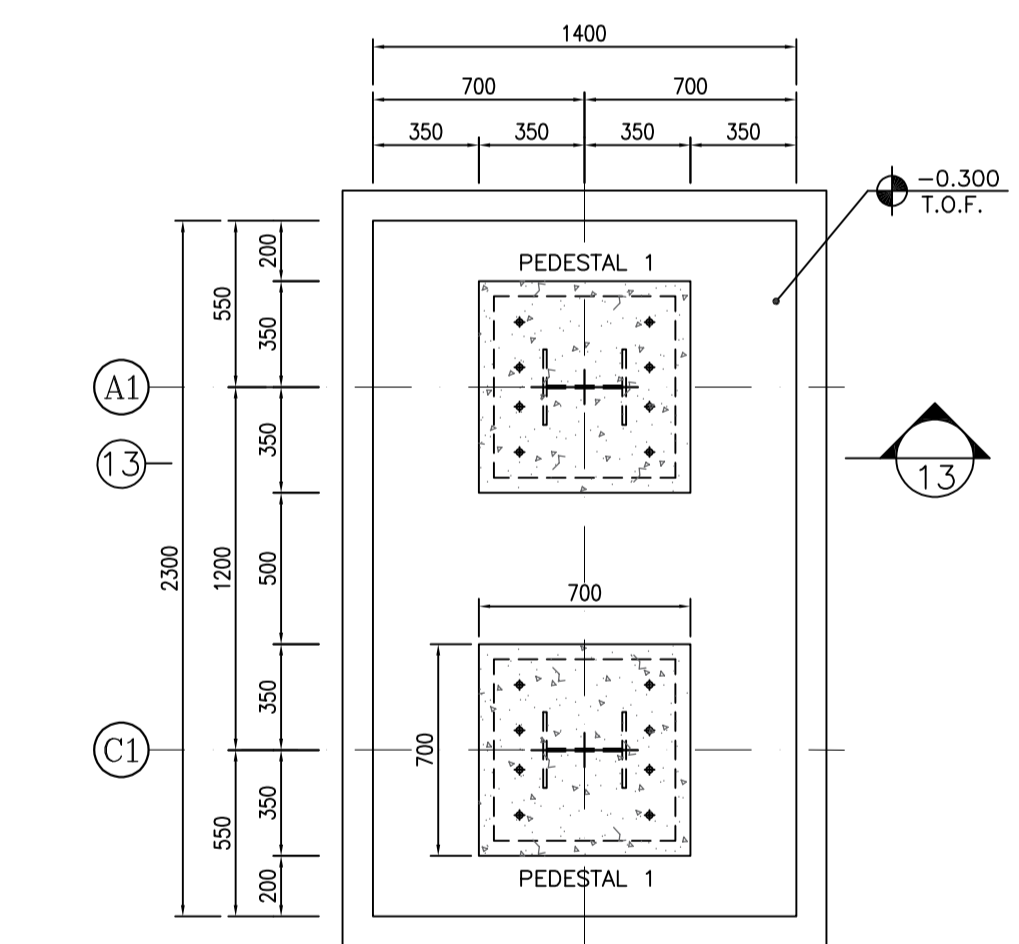


FOUNDATION PLAN F-2
FORMWORK
NO.=16

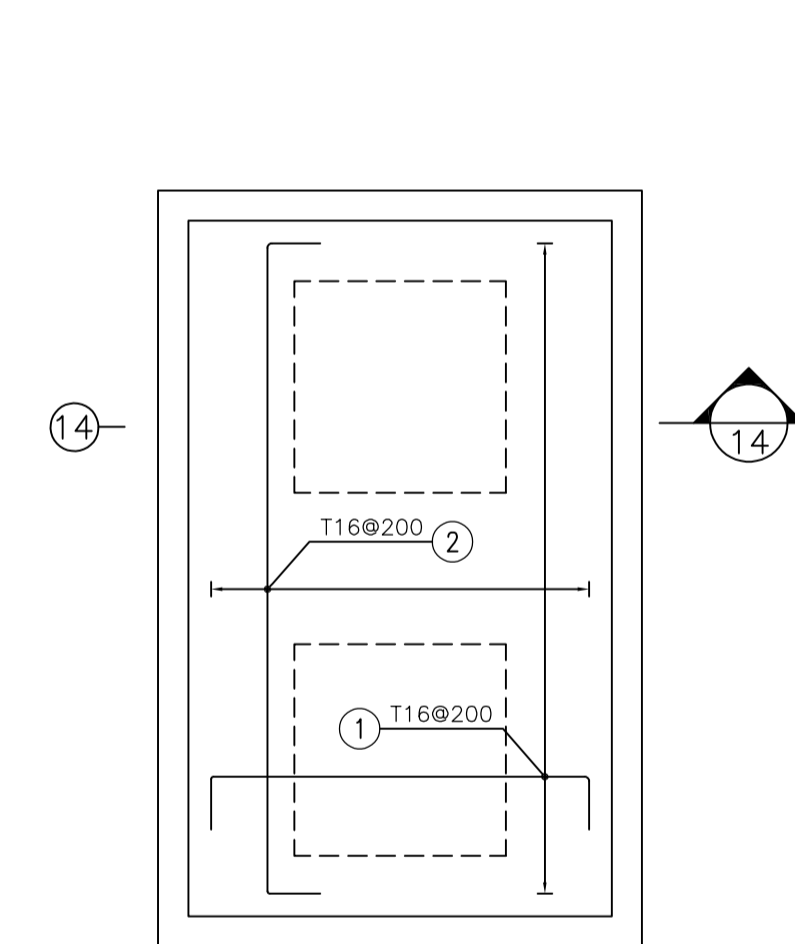


FOUNDATION PLAN F-2
REINFORCEMENT
NO.=16

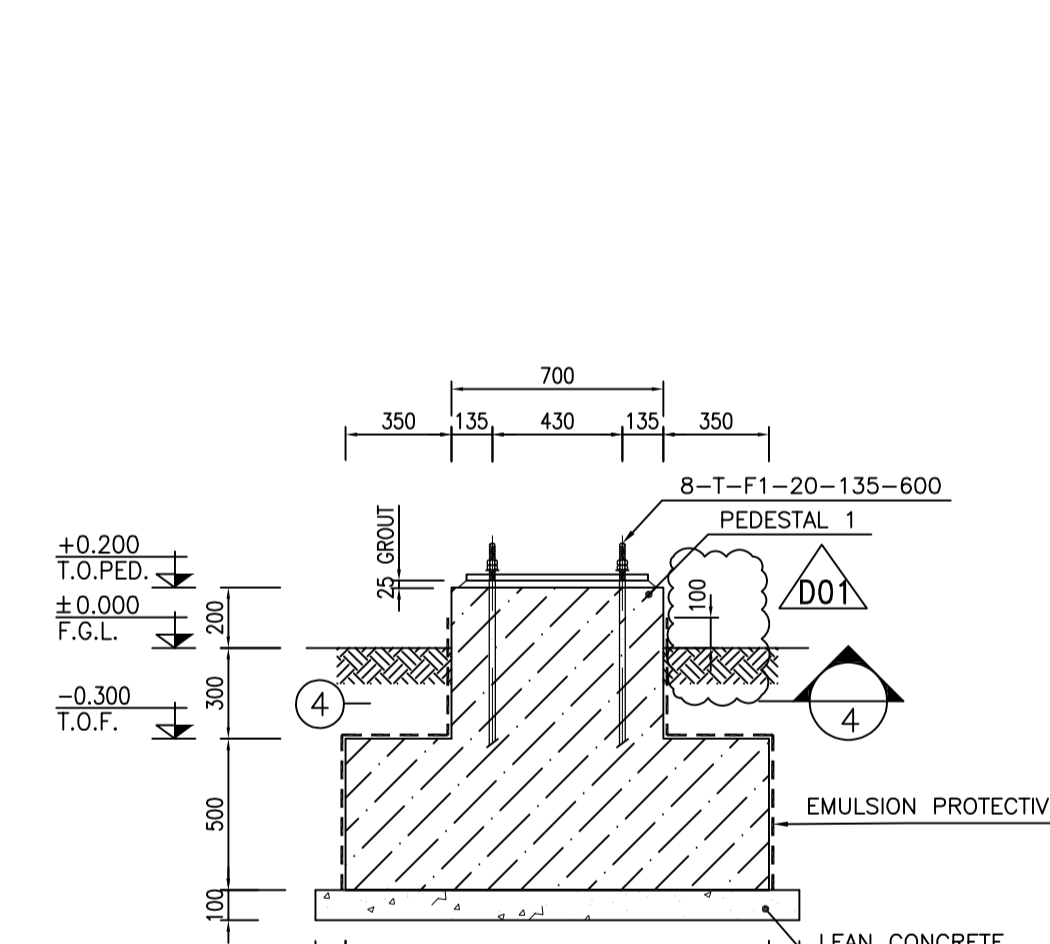
BAR BENDING SCHEDULE-FOUNDATION						
Pos	Spec.	Shape	L	No.	T10	T16
1	T16	250 1250 250	1.75	632		1106.0
2	T16	250 2150 250	2.65	16		42.4
3	T16	250 1350 250	1.85	304		562.4
4	T16	250 850 250	1.35	32		43.2
5	T10	600 600 100	2.60	225	585.0	
6	T10	100 600 100	0.70	324	226.8	
TOTAL LENGTH (m)					811.8	1754.0
UNIT WEIGHT (Kg/m)					0.617	1.578
WEIGHT (Kg)					500.9	2767.9
TOTAL WEIGHT (Kg)					3270 Kg.	



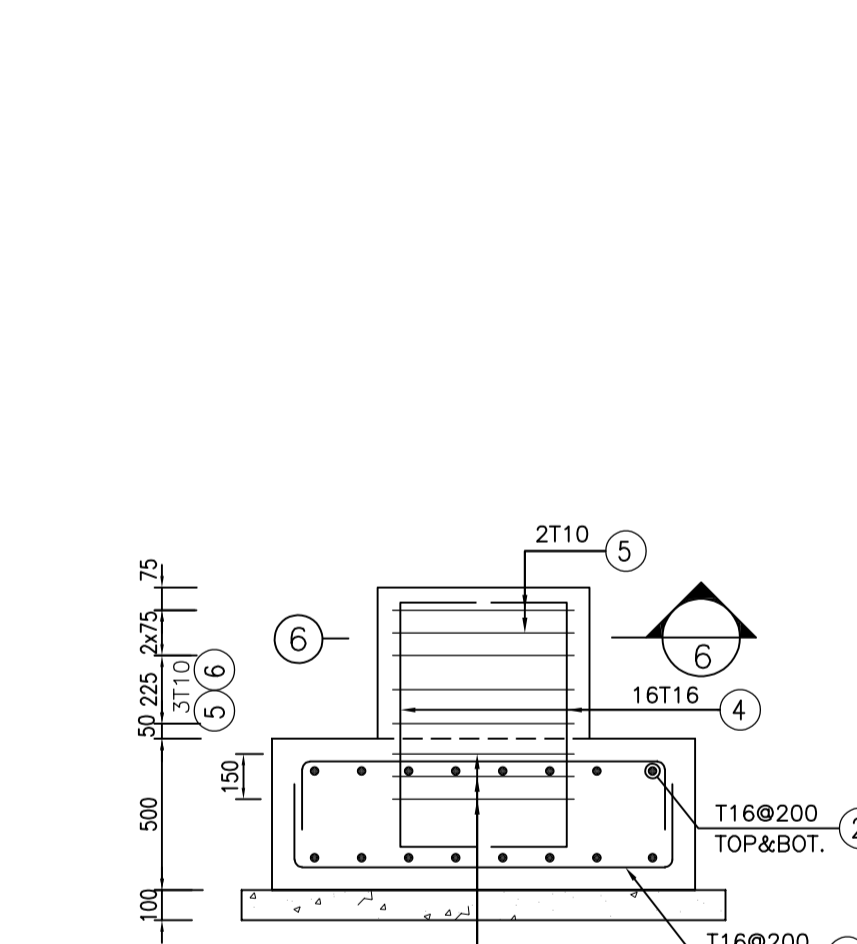
FOUNDATION PLAN F-3
FORMWORK
NO.=1



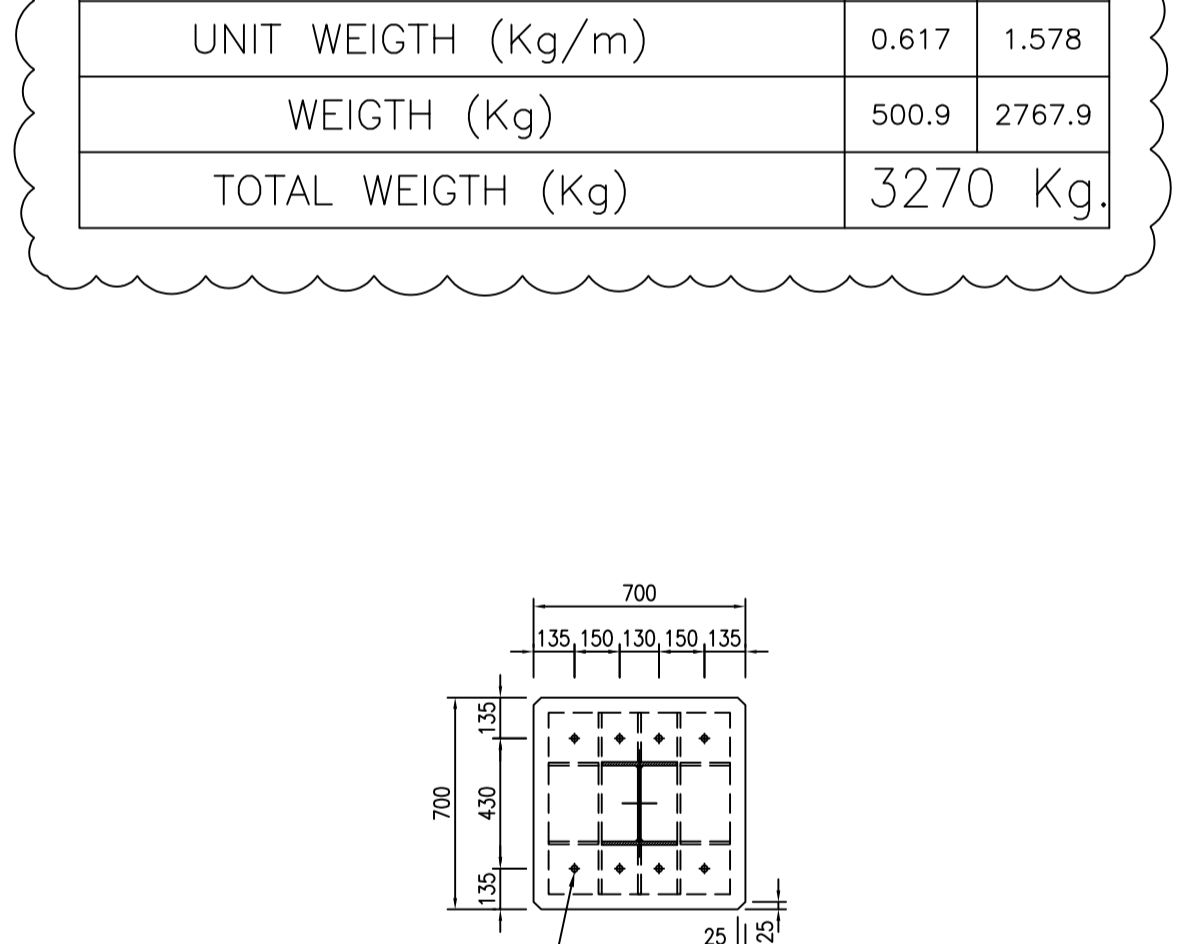
FOUNDATION PLAN F-3
REINFORCEMENT
NO.=1



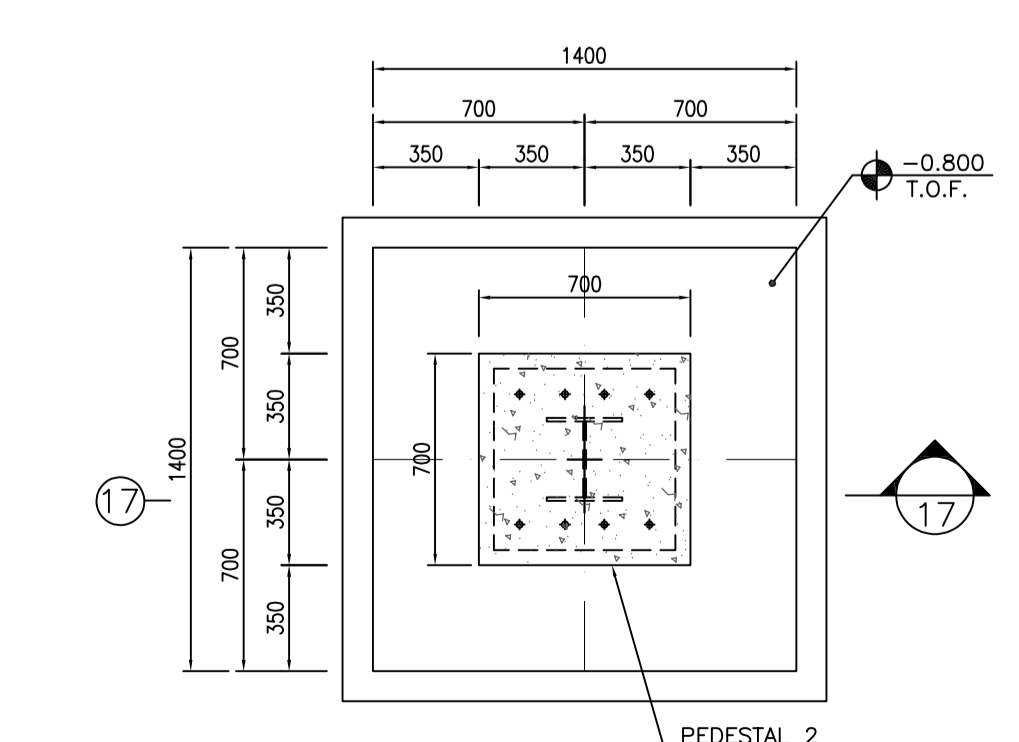
FOUNDATION PLAN F-3
FORMWORK
NO.=1



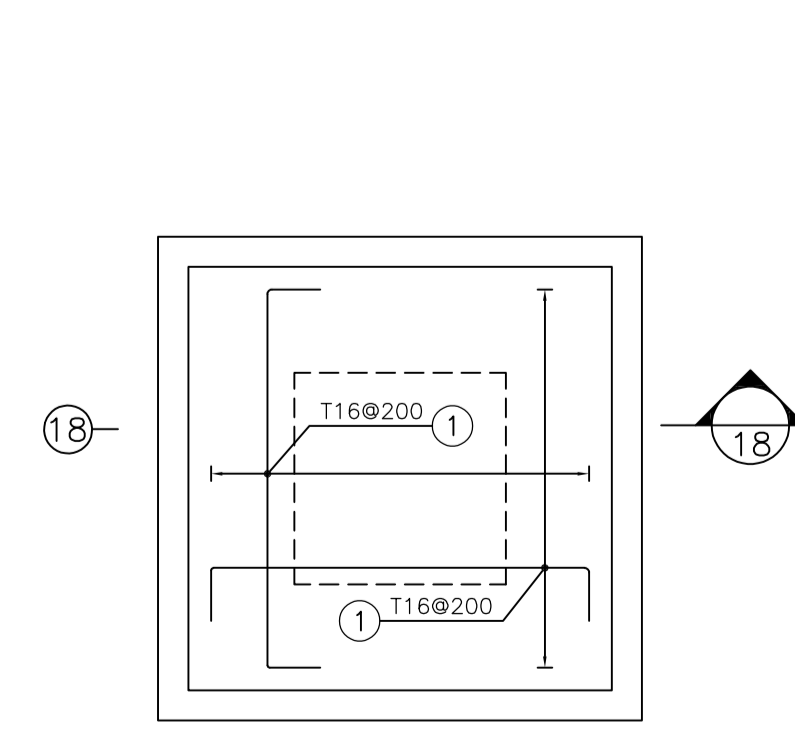
FOUNDATION PLAN F-3
REINFORCEMENT
NO.=1



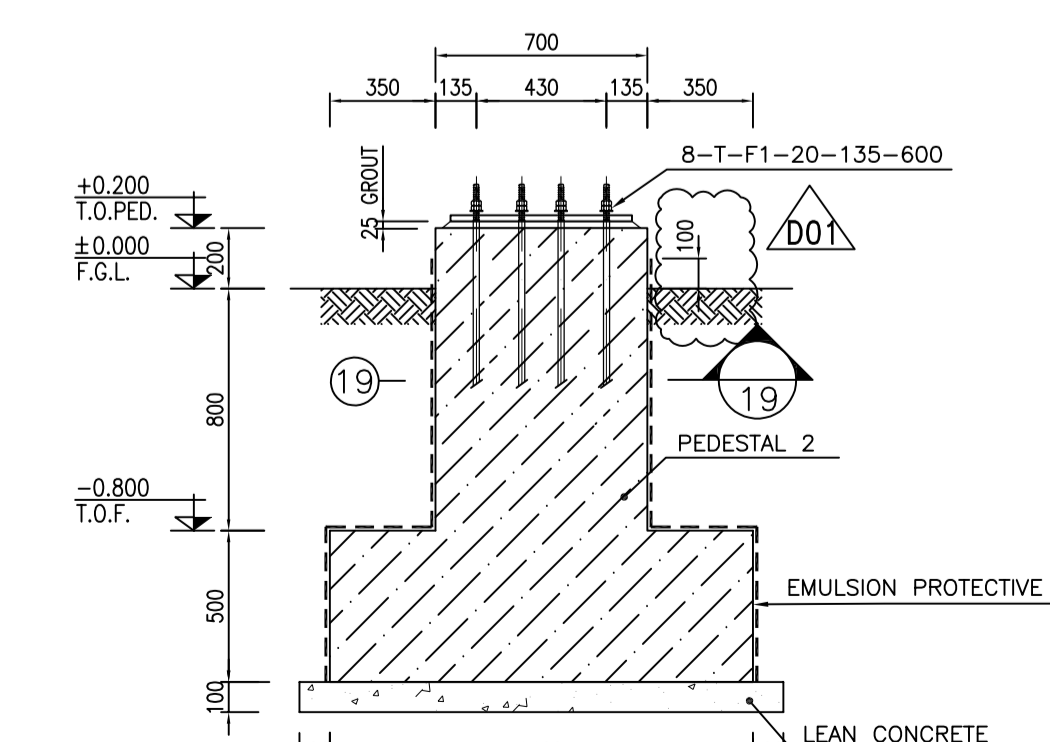
FOUNDATION PLAN F-3
REINFORCEMENT
NO.=1



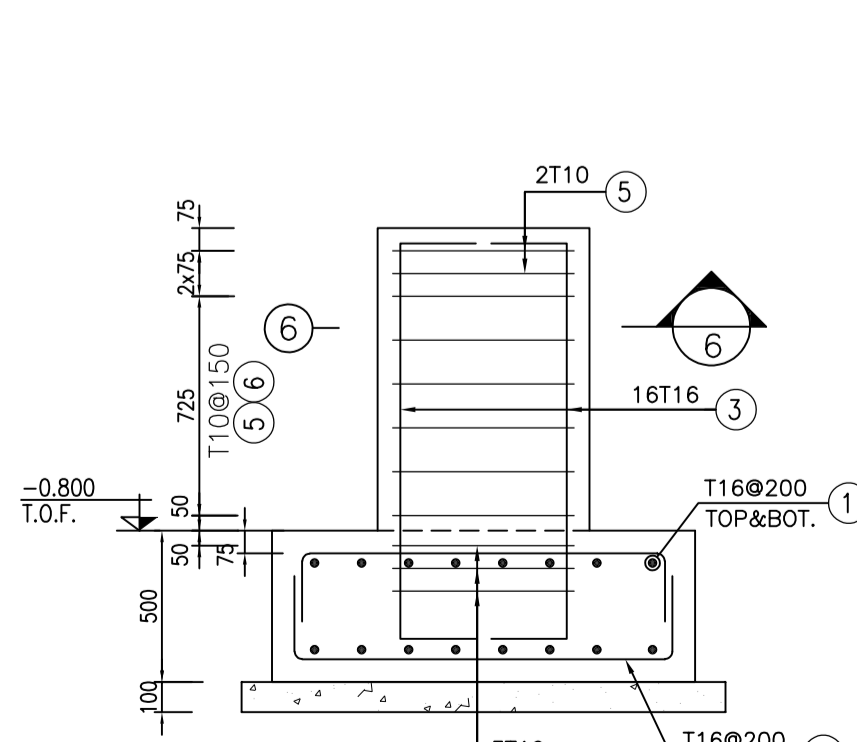
FOUNDATION PLAN F-4
FORMWORK
NO.=1



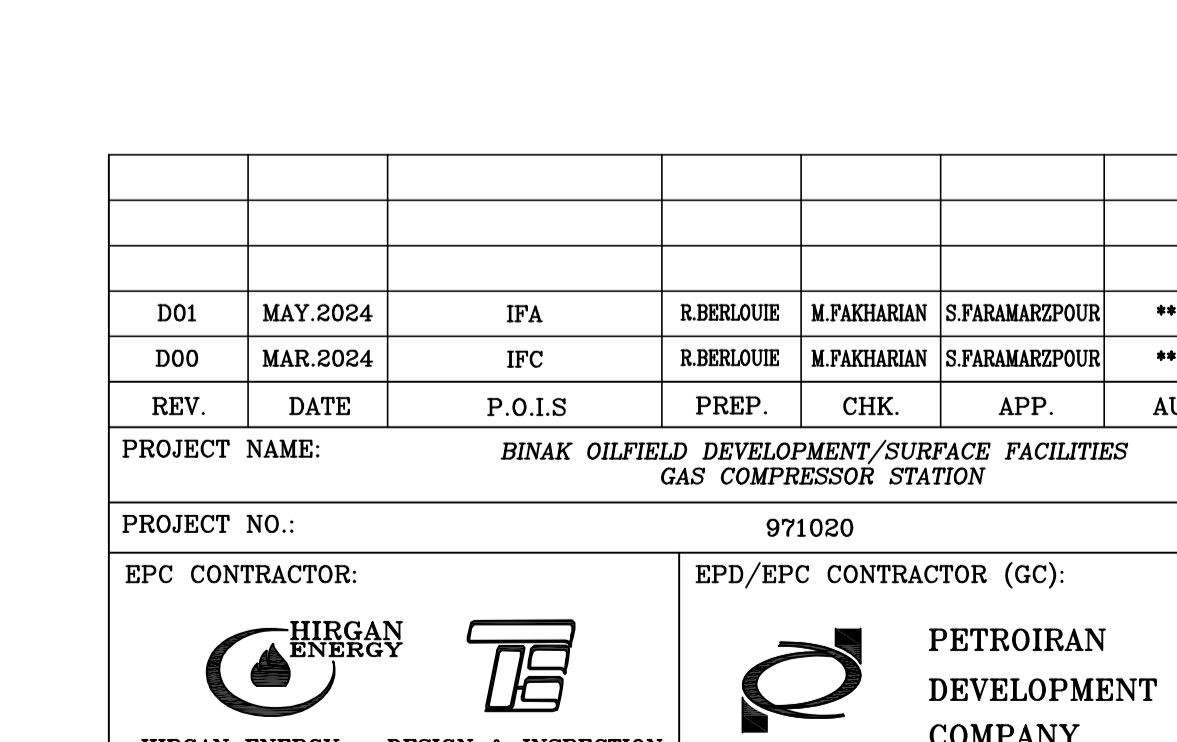
FOUNDATION PLAN F-4
REINFORCEMENT
NO.=1



FOUNDATION PLAN F-4
FORMWORK
NO.=1



FOUNDATION PLAN F-4
REINFORCEMENT
NO.=1



FOUNDATION PLAN F-4
REINFORCEMENT
NO.=1

- NOTES**
- 1) ALL ELEVATIONS AND COORDINATES ARE IN "m" AND DIMENSIONS ARE IN "mm" UNLESS OTHERWISE NOTED.
 - 2) ALL DIMENSIONS AND ELEVATIONS SHALL BE CHECKED BY THE CONTRACTOR PRIOR TO CONSTRUCTION.
 - 3) ACCORDING TO THE SPECIFICATION OF CONCRETE WORKS:
"BK-GNRL-PEDCO-00-ST-SP-0001", 28 DAYS CHARACTERISTIC COMPRESSIVE STRENGTH OF MAIN CONCRETE IS 30 MPa (ON CYLINDRICAL SPECIMEN)
 - 4) ACCORDING TO THE SPECIFICATION OF CONCRETE WORKS:
"BK-GNRL-PEDCO-000-ST-SP-0001", 28 DAYS CHARACTERISTIC COMPRESSIVE STRENGTH OF LEAN CONCRETE IS 15 MPa (ON CYLINDRICAL SPECIMEN)
 - 5) CONCRETE COVER OVER BARS SHALL BE 75mm FOR FOUNDATION AND 50mm FOR PEDESTALS.
 - 6) REINFORCING BARS SHALL BE S400 ACCORDING TO: ISIRI1312 AND INBC9 WITH MINIMUM TENSILE YIELD STRENGTH 400 N/mm²
 - 7) UNDERGROUND CONCRETE SHALL BE PROTECTED AND COATED ACCORDING TO RELEVANT SPECIFICATION.
 - 8) CEMENT TYPE II SHALL BE USED ACCORDING TO GEOTECHNICAL REPORT SUGGESTION.
 - 9) FILL MATERIAL SHALL BE COMPACTED TO NOT LESS THAN 95% OF THE MAXIMUM DENSITY AS DETERMINED BY ASTM D-1557 (MODIFIED PROCTOR) METHOD.
 - 10) REINFORCEMENT SHALL BE ADJUSTED LOCALLY TO SUIT THE RECESS OF ANCHOR BOLTS, HOLES AND OTHER EMBEDDED MATERIALS.
 - 11) THE EMULSION SHOULD BE USED ON CONCRETE EXPOSED WITH SOIL. B-90-COAT.M.E IS A BITUMEN-BASED ONE-COMPONENT EMULSION PROTECTIVE COATING TO PREVENT THE PENETRATION OF DESTRUCTIVE SALTS & IONS. THIS MATERIAL IS CONTROLLED ACCORDING TO THE FOLLOWING STANDARDS: ASTM D1227, ASTM D2939, ASTM D1640

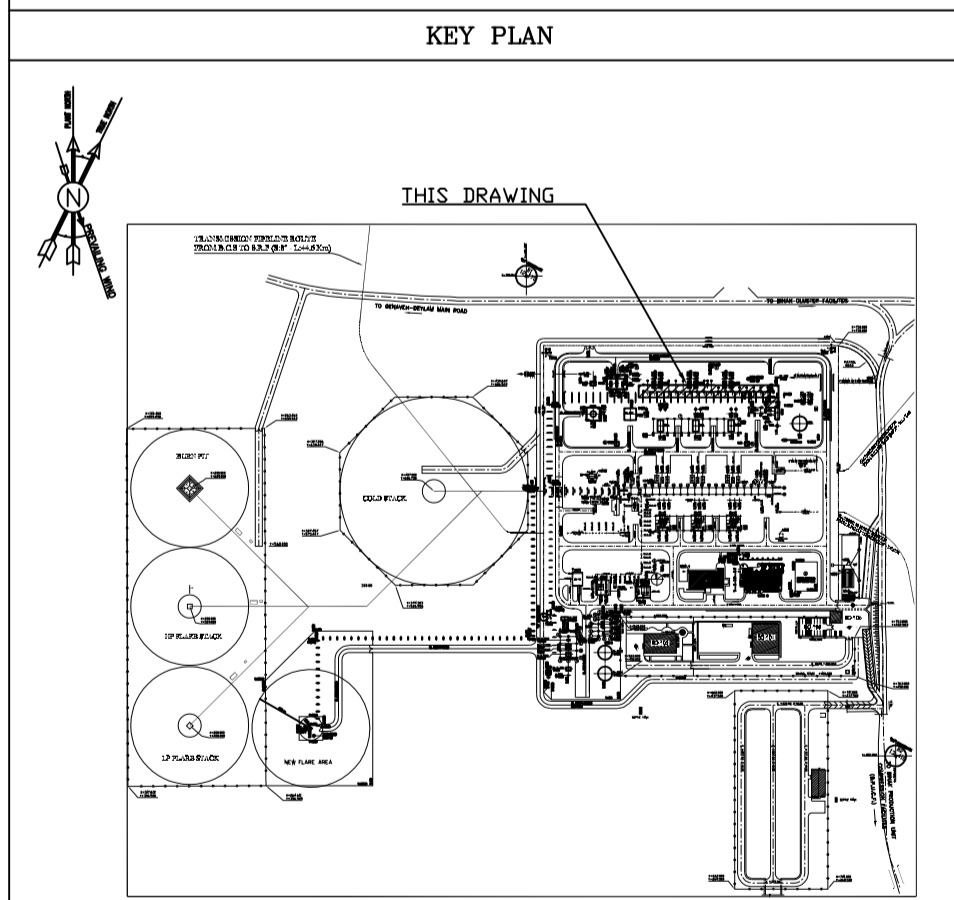
H.P.P. LEVEL : ±0.00 =+100.00

LEGEND

	REINFORCED CONCRETE	F.G.L. : FINISH GROUND LEVEL
	LEAN CONCRETE	T.O.G. : TOP OF GROUT
	GROUND	T.O.F. : TOP OF FOUNDATION
		T.O.S. : TOP OF STEEL
		P.S. : PIPE SUPPORT

REFERENCE DRAWING

GENERAL NOTES - STEEL STRUCTURES	DRG. No.
GENERAL NOTES - STEEL STRUCTURES	BK-GNRL-PEDCO-00-ST-DW-0012
STRUCTURAL DRAWING FOR SPECIAL PIPE SUPPORTS	BK-GCS-PEDCO-120-ST-DW-0050
GENERAL NOTES - REINFORCEMENT CONCRETE STRUCTURES	DRG. No.
SPECIFICATION FOR EARTH WORK	BK-GNRL-PEDCO-000-CY-SP-0004
UNIT PLOT PLAN DRAWING	BK-GCS-PEDCO-120-PI-PY-0001
SPECIAL PIPE SUPPORT DRAWINGS	BK-GCS-PEDCO-120-PI-DW-0009
SPECIFICATION FOR CONCRETE WORK	BK-GNRL-PEDCO-000-ST-SP-0001
SPECIFICATION FOR GROUTING	BK-GNRL-PEDCO-000-ST-SP-0004
STANDARD DRAWING FOR ANCHOR BOLTS	BK-GNRL-PEDCO-000-ST-DW-0002
GEOTECHNICAL INVESTIGATION REPORT FOR COMPRESSOR STATION	BK-GCS-PEDCO-120-GT-RT-0001



REV.	DATE	P.O.I.S	PREP.	CHK.	APP.	AUT.	DESCRIPTION	BY	DATE	CHECKED	REV. APPR.
D01	MAY.2024	IFA	R.BERLOUE	M.FAKHARIAN	S.PARAMARZPOUR	**					
D00	MAR.2024	IPC	R.BERLOUE	M.FAKHARIAN	S.PARAMARZPOUR	**					

اصل و کلیه نسخ این نقشه و حق اقتباس متعلق به شرکت ملی مناطق نفت خیز جنوب می باشد.

THE ORIGINAL AND ALL COPIES OF THIS DRAWING TOGETHER WITH THE COPYRIGHT THEREIN ARE THE SOLE PROPERTY OF N.I.S.O.C./ FIELDS

PROJECT NAME: BINAK OILFIELD DEVELOPMENT/SURFACE FACILITIES GAS COMPRESSOR STATION

PROJECT NO.: 971020

EPC CONTRACTOR: HIRGAN ENERGY

EPD/EPC CONTRACTOR (GC): PETROIRAN DEVELOPMENT COMPANY

DRAWING TITLE: FOUNDATION DRAWING FOR PIPE SUPPORTS

SCALE	SIZE	DRAWING NO.	SHEET NO.	REV.	BUDGET REF.	LOCATION	SIZE	CLASS	SERIAL NO.	SHEET	REVISION
AS SHOWN	A1	BK-GCS-PEDCO-120-ST-DW-0049	2 OF 2	D01	053-073-9184	F	4	Q	709186	2	D01