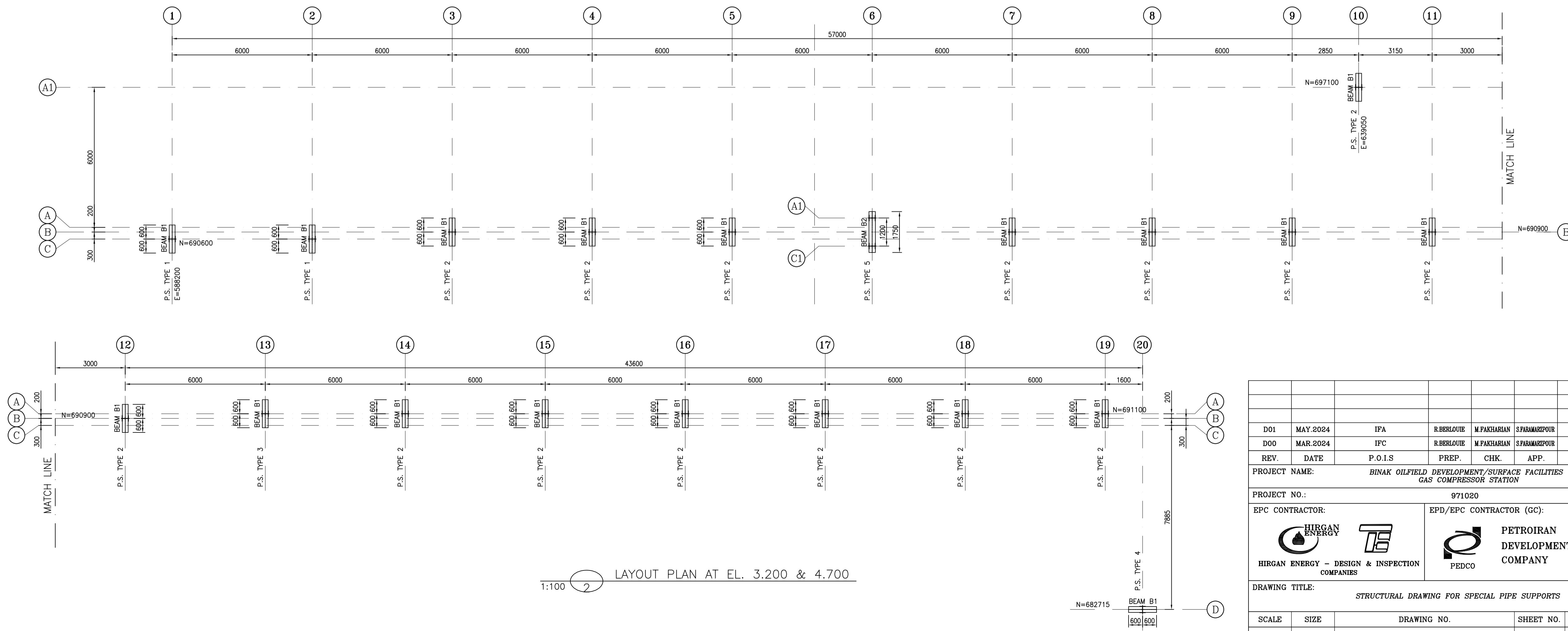


1:100 1 COLUMN & BASEPLATE LAYOUT PLAN



1:100 2 LAYOUT PLAN AT EL. 3.200 & 4.700

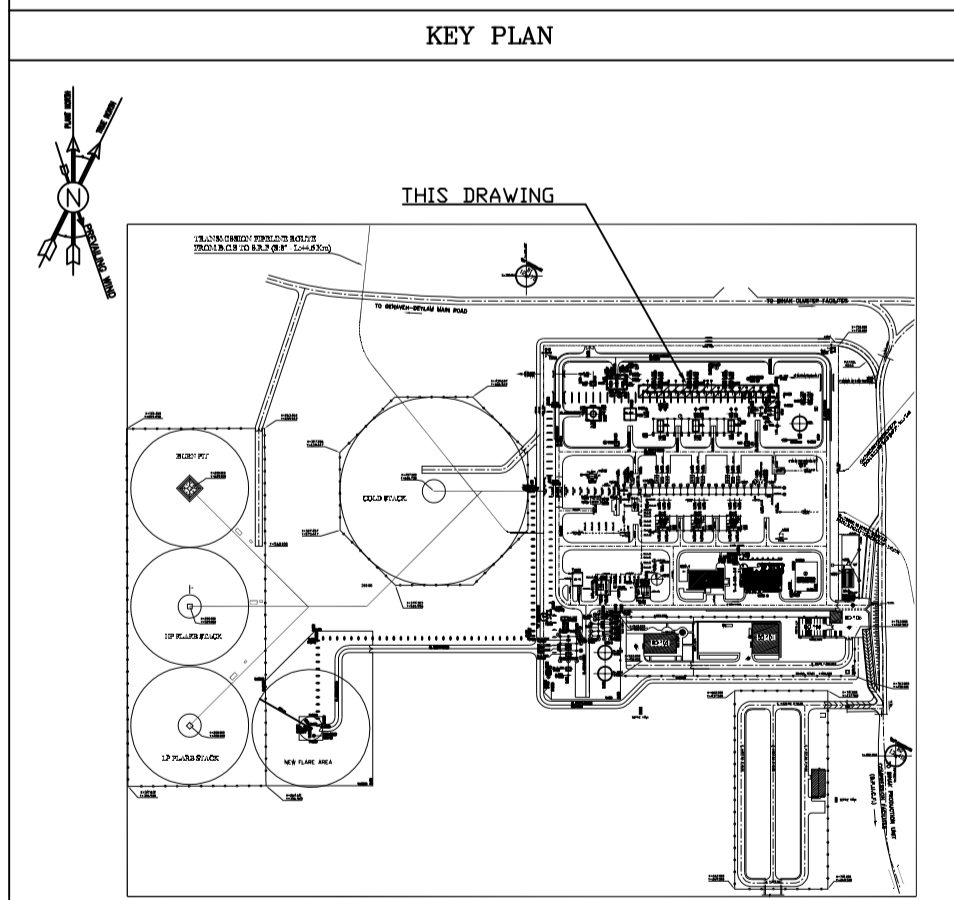
- NOTES**
- 1) ALL ELEVATIONS AND COORDINATES ARE IN "m" AND DIMENSIONS ARE IN "mm" UNLESS OTHERWISE NOTED.
  - 2) ALL DIMENSIONS AND ELEVATIONS SHALL BE CHECKED BY THE CONTRACTOR PRIOR TO CONSTRUCTION.
  - 3) STRUCTURAL STEEL SHAPE & PLATES SHALL CONFORM TO S235JR WITH MINIMUM YIELD STRESS OF  $F_y=2400 \text{ kg/cm}^2$ .
  - 4) ALL BOLTS ARE HIGH STRENGTH BOLTS GRADE 8.8 WITH MINIMUM TENSILE STRENGTH OF  $F_u=800 \text{ MPa}$ .
  - 5) ANCHOR BOLTS SHALL BE ASTM A307 GRADE C.
  - 6) ALL WELDING SHALL BE IN ACCORDANCE WITH THE LATEST EDITION OF STRUCTURAL WELDING CODE, AWS D1.1/D1.1M.
  - 7) TYPE OF WELDING ELECTRODE SHALL BE E70 AND IN ACCORDANCE WITH SPECIFICATION FOR STRUCTURAL STEEL FABRICATION AND ERECTION.
  - 8) FLANGES SHOULD BE CONTINUOUSLY WELDED TO THE WEB.

$\pm 0.00 = +11.20(\text{F.G.L})\text{MSL}$

**LEGEND**

	REINFORCED CONCRETE	F.G.L. : FINISH GROUND LEVEL
	LEAN CONCRETE	T.O.G. : TOP OF GROUT
	GROUND	T.O.F. : TOP OF FOUNDATION
		T.O.S. : TOP OF STEEL
		P.S. : PIPE SUPPORT

REFERENCE DRAWING	DRG. No.
GENERAL NOTES - STEEL STRUCTURES	BK-GNRL-PEDCO-00-ST-DW-0012
STRUCTURAL DRAWING FOR SPECIAL PIPE SUPPORTS	BK-GCS-PEDCO-120-ST-DW-0050
GENERAL NOTES - REINFORCEMENT CONCRETE STRUCTURES	BK-GNRL-PEDCO-000-ST-DW-0012
SPECIFICATION FOR EARTH WORK	BK-GNRL-PEDCO-000-CY-SP-0004
UNIT PLOT PLAN DRAWING	BK-GCS-PEDCO-120-PI-PY-0001
SPECIAL PIPE SUPPORT DRAWINGS	BK-GCS-PEDCO-120-PI-DW-0009
SPECIFICATION FOR CONCRETE WORK	BK-GNRL-PEDCO-000-ST-SP-0001
SPECIFICATION FOR GROUTING	BK-GNRL-PEDCO-000-ST-SP-0004
STANDARD DRAWING FOR ANCHOR BOLTS	BK-GNRL-PEDCO-000-ST-DW-0002



REV.	DATE	P.O.I.S	PREP.	CHK.	APP.	AUT.
D01	MAY.2024	IFA	R.BERLOUIE	M.FAKHARIAN	S.FARMAZPOUR	**
D00	MAR.2024	IFC	R.BERLOUIE	M.FAKHARIAN	S.FARMAZPOUR	**

PROJECT NAME: BINAK OILFIELD DEVELOPMENT/SURFACE FACILITIES GAS COMPRESSOR STATION

PROJECT NO.: 971020

EPC CONTRACTOR: HIRGAN ENERGY (Logo) / IRANIAN ENERGY COMPANY

EPD/EPC CONTRACTOR (GC): PETROIRAN DEVELOPMENT COMPANY (Logo) / PEDCO

DRAWING TITLE: STRUCTURAL DRAWING FOR SPECIAL PIPE SUPPORTS

SCALE	SIZE	DRAWING NO.	SHEET NO.	REV.
AS SHOWN	A1	BK-GCS-PEDCO-120-ST-DW-0050	1 OF 2	D01

REV.	DESCRIPTION	BY	DATE	BY	DATE
***	*****	***	*****	***	*****

اسم و کلیه نسخ این نقشه و حق اقتباس متعلق به شرکت ملی مناطق نفت خیز جنوب می باشد.

THE ORIGINAL AND ALL COPIES OF THIS DRAWING TOGETHER WITH THE COPYRIGHT THEREIN ARE THE SOLE PROPERTY OF N.I.S.O.C./ FIELDS

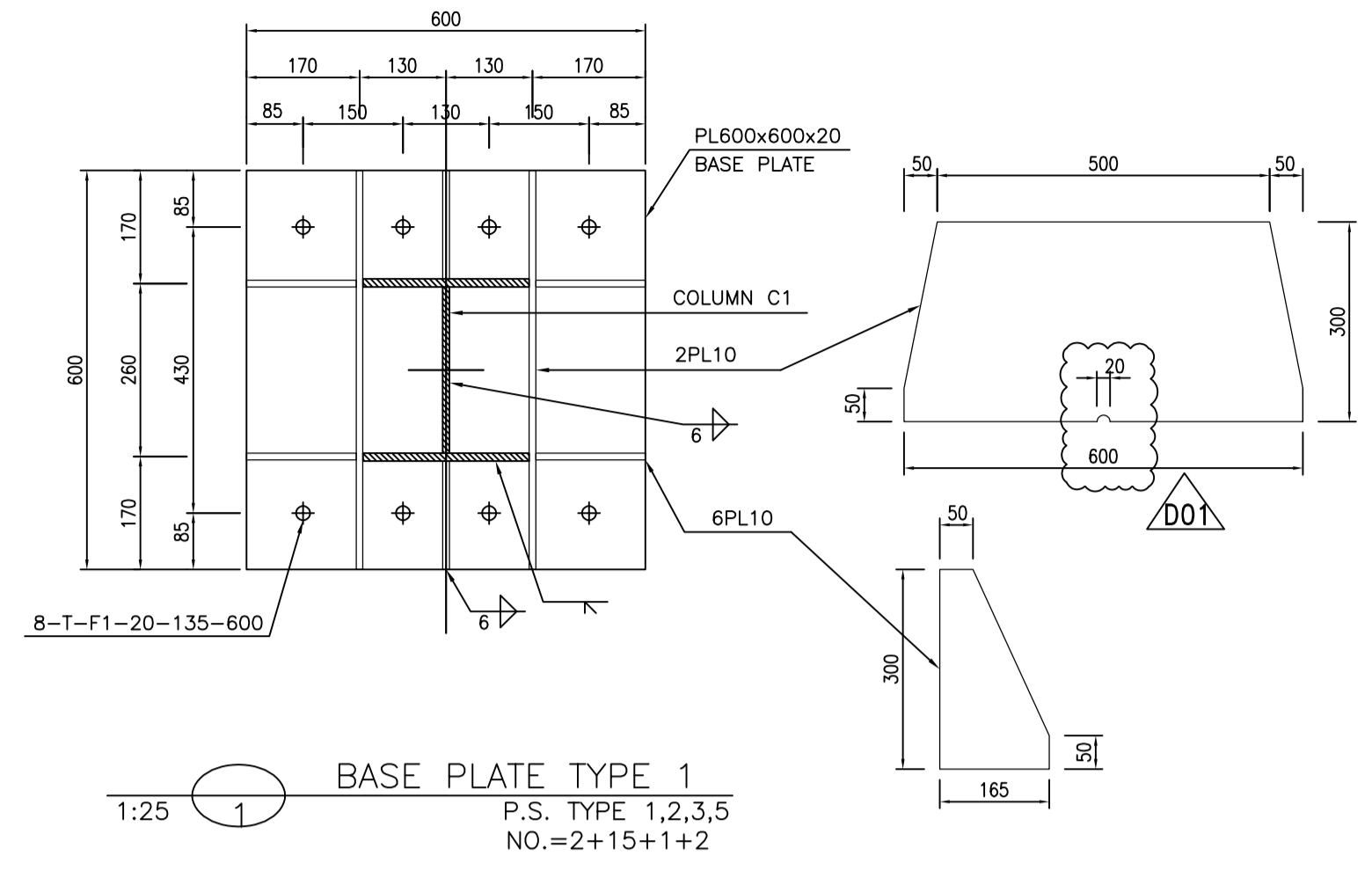
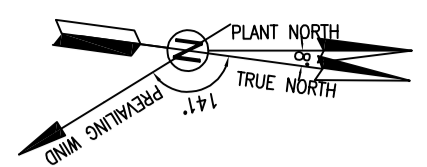
BINAK OILFIELD DEVELOPMENT SURFACE FACILITIES GAS COMPRESSOR STATION

DATE	SCALE	DRAWING BY	CHECKED BY	PROJECT ENG.

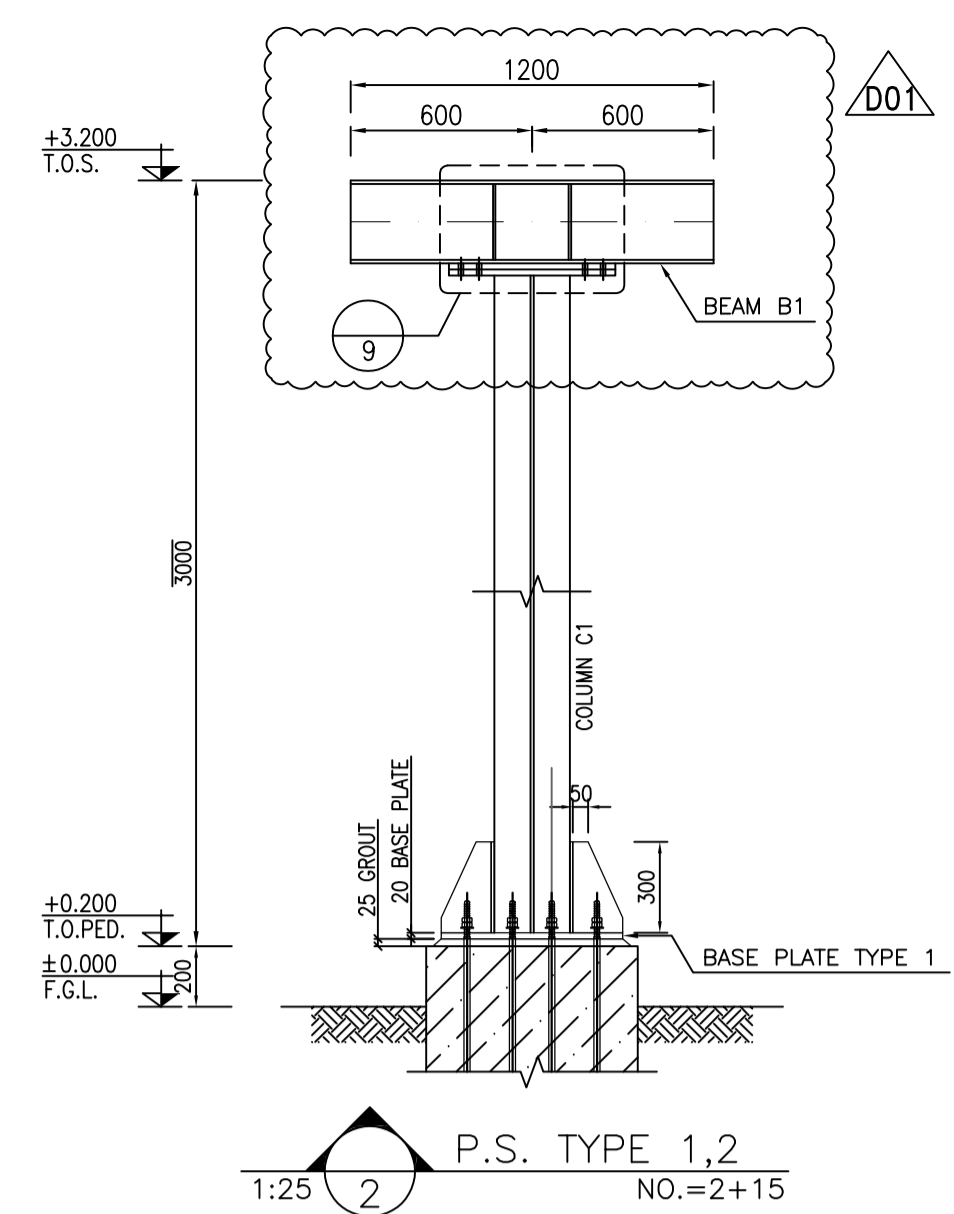
NO CONSTRUCTION PERMITTED UNLESS DRAWING APPROVED

APPROVED FOR CONSTRUCTION	BY:	DATE:

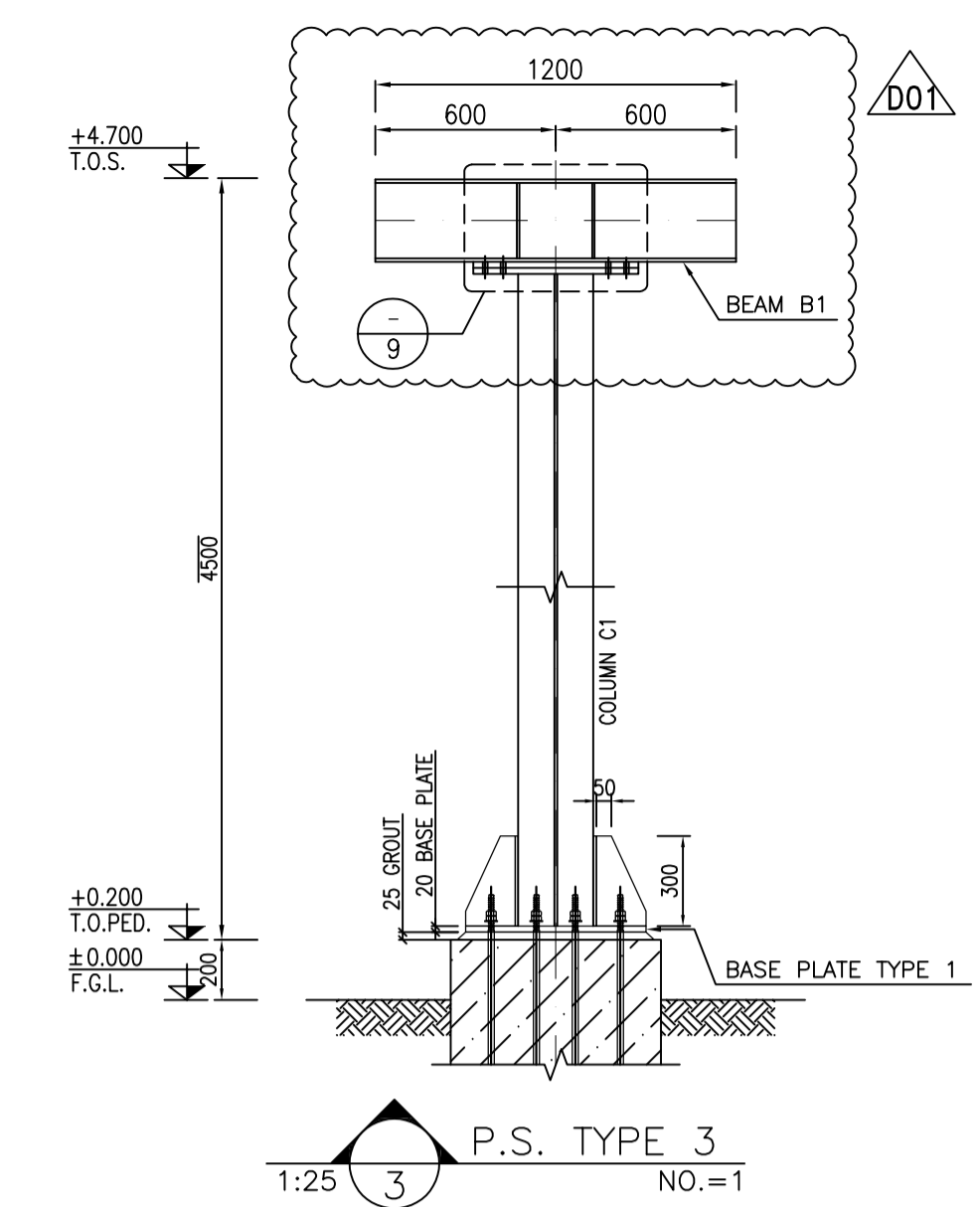
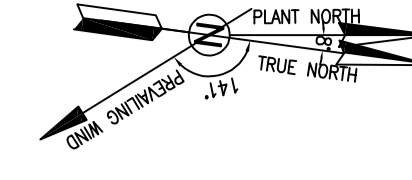
BUDGET REF.	LOCATION	SIZE	CLASS	SERIAL NO.	SHEET	REVISION
AS SHOWN	A1	BK-GCS-PEDCO-120-ST-DW-0050	1 OF 2	D01	053-073-9184	F 4 M 709187 1 D01



BASE PLATE TYPE 1  
P.S. TYPE 1,2,3,5  
NO.=2+15+1+2



P.S. TYPE 1,2  
NO.=2+15



P.S. TYPE 3  
NO.=1

- NOTES**
- 1) ALL ELEVATIONS AND COORDINATES ARE IN "m" AND DIMENSIONS ARE IN "mm" UNLESS OTHERWISE NOTED.
  - 2) ALL DIMENSIONS AND ELEVATIONS SHALL BE CHECKED BY THE CONTRACTOR PRIOR TO CONSTRUCTION.
  - 3) STRUCTURAL STEEL SHAPE & PLATES SHALL CONFORM TO S235JR
  - 4) ALL BOLTS ARE HIGH STRENGTH BOLTS GRADE 8.8 WITH MINIMUM TENSILE STRENGTH OF  $F_u=800$  MPa.
  - 5) ANCHOR BOLTS SHALL BE ASTM A307 GRADE C.
  - 6) ALL WELDING SHALL BE IN ACCORDANCE WITH THE LATEST EDITION OF STRUCTURAL WELDING CODE, AWS D1.1/D1.1M.
  - 7) TYPE OF WELDING ELECTRODE SHALL BE E70 AND IN ACCORDANCE WITH SPECIFICATION FOR STRUCTURAL STEEL FABRICATION AND ERECTION.
  - 8) FLANGES SHOULD BE CONTINUOUSLY WELDED TO THE WEB.

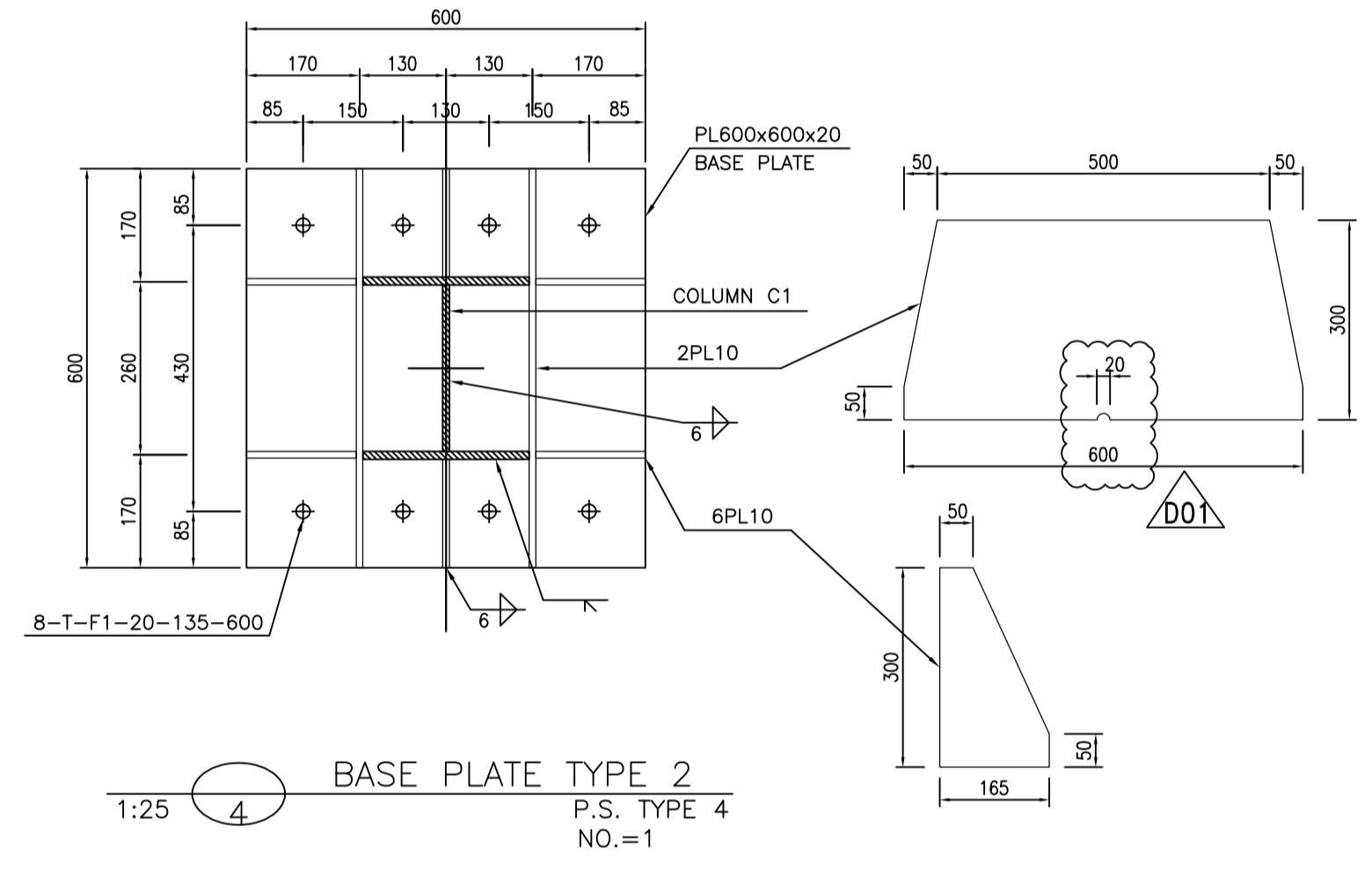
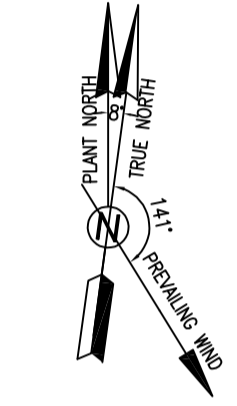
±0.00 = +11.20(F.G.L)MSL

**LEGEND**

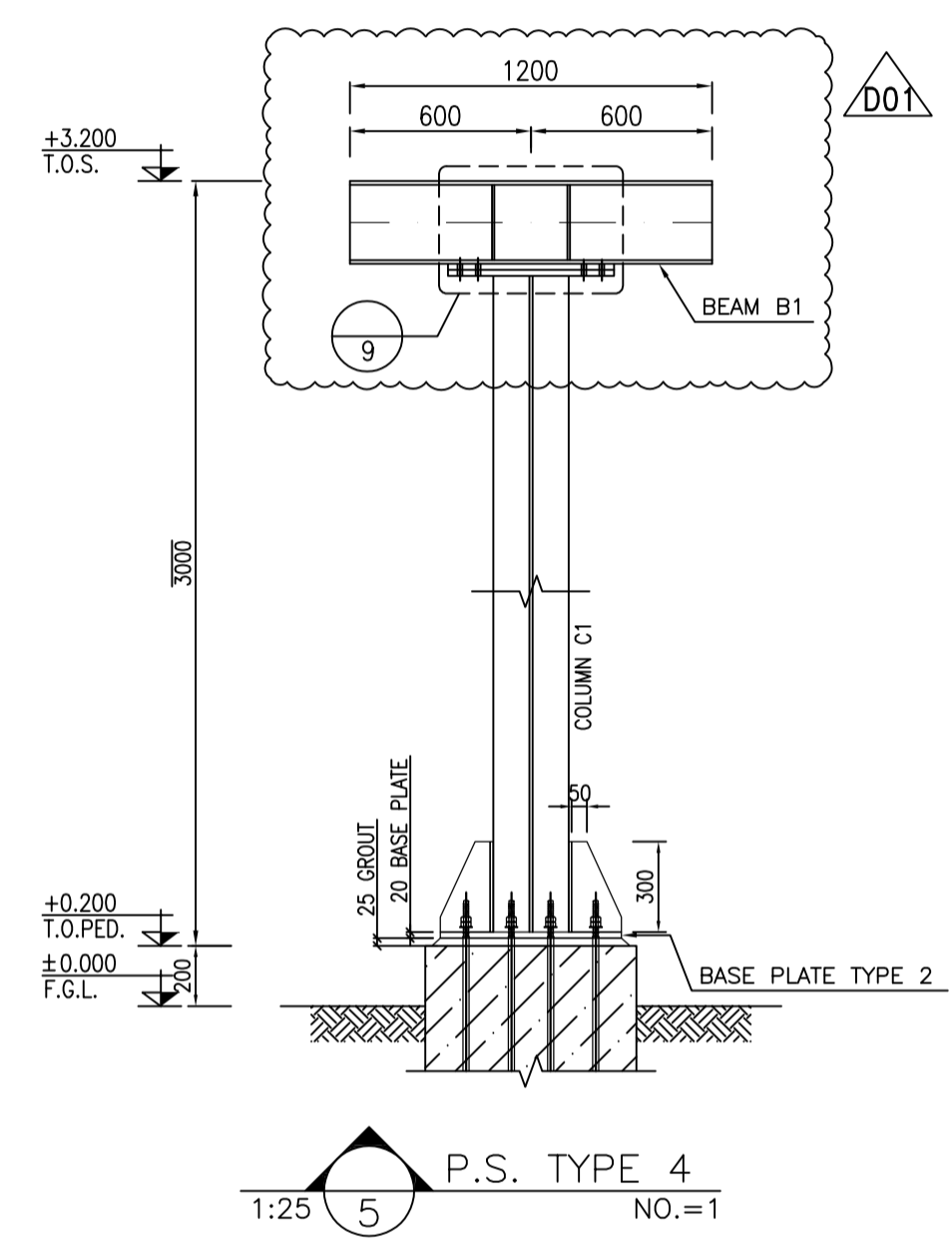
	REINFORCED CONCRETE	F.G.L. : FINISH GROUND LEVEL
	LEAN CONCRETE	T.O.G. : TOP OF GROUT
	GROUND	T.O.F. : TOP OF FOUNDATION
		T.O.S. : TOP OF STEEL
		P.S. : PIPE SUPPORT

**REFERENCE DRAWING**

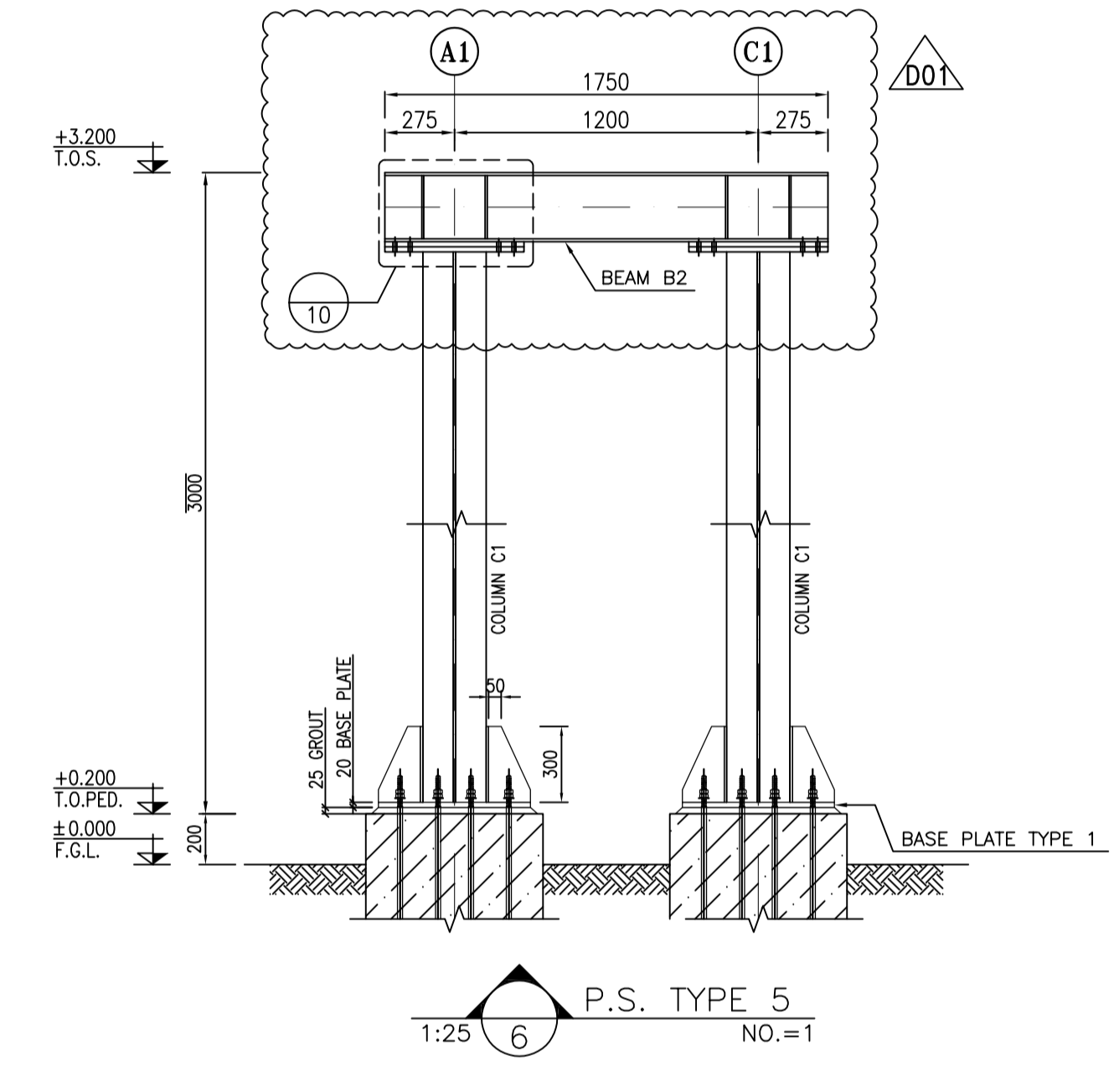
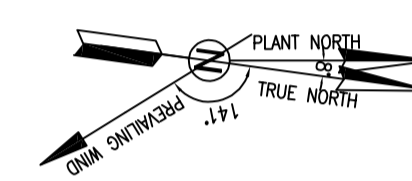
GENERAL NOTES - STEEL STRUCTURES	DRG. No.
GENERAL NOTES - STEEL STRUCTURES	BK-GNRL-PEDCO-00-ST-DW-0012
STRUCTURAL DRAWING FOR SPECIAL PIPE SUPPORTS	BK-GCS-PEDCO-120-ST-DW-0050
GENERAL NOTES - REINFORCEMENT CONCRETE STRUCTURES	BK-GNRL-PEDCO-000-ST-DW-0012
SPECIFICATION FOR EARTH WORK	BK-GNRL-PEDCO-000-CY-SP-0004
UNIT PLOT PLAN DRAWING	BK-GCS-PEDCO-120-PI-PY-0001
SPECIAL PIPE SUPPORT DRAWINGS	BK-GCS-PEDCO-120-PI-DW-0009
SPECIFICATION FOR CONCRETE WORK	BK-GNRL-PEDCO-000-ST-SP-0001
SPECIFICATION FOR GROUTING	BK-GNRL-PEDCO-000-ST-SP-0004
STANDARD DRAWING FOR ANCHOR BOLTS	BK-GNRL-PEDCO-000-ST-DW-0002



BASE PLATE TYPE 2  
P.S. TYPE 4  
NO.=1

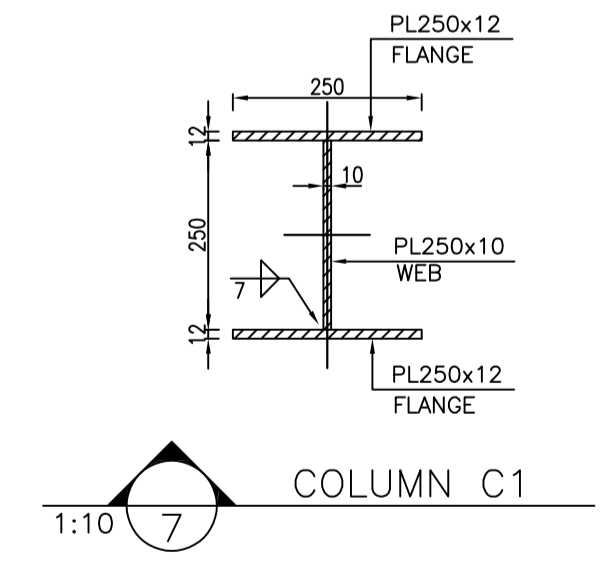
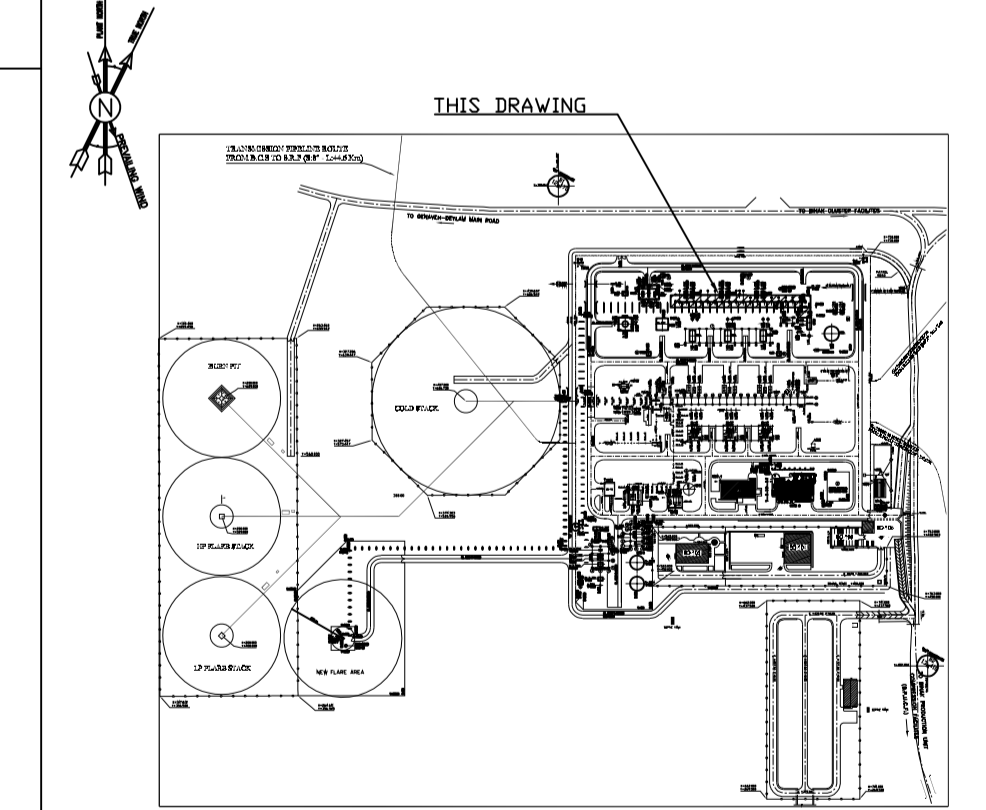


P.S. TYPE 4  
NO.=1

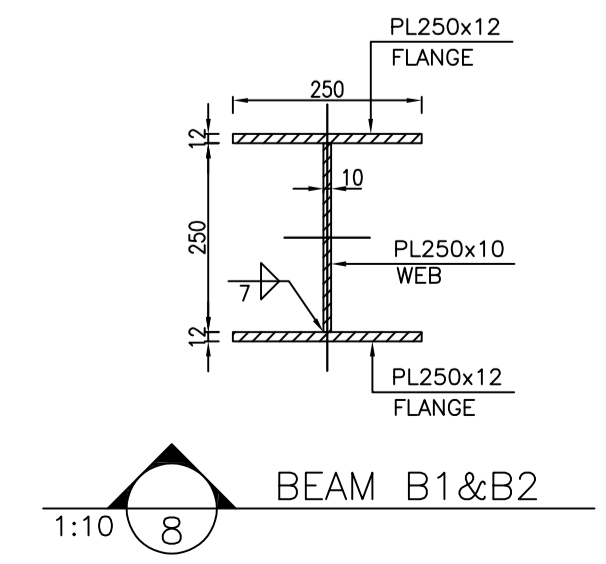


P.S. TYPE 5  
NO.=1

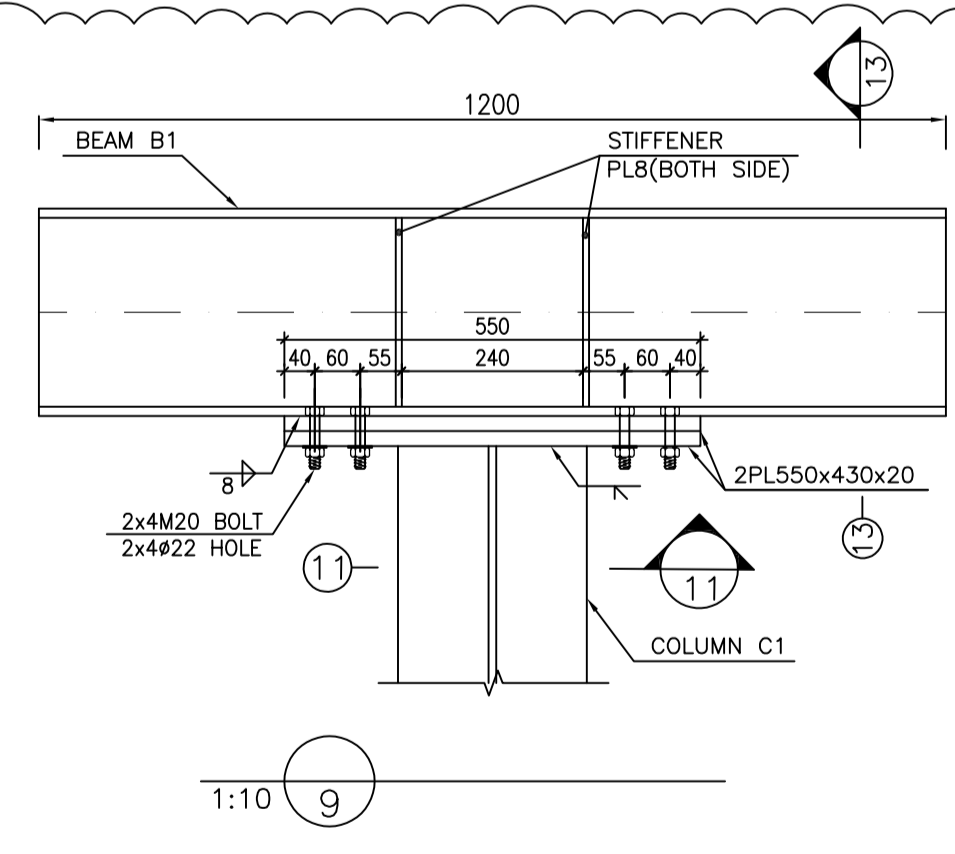
**KEY PLAN**



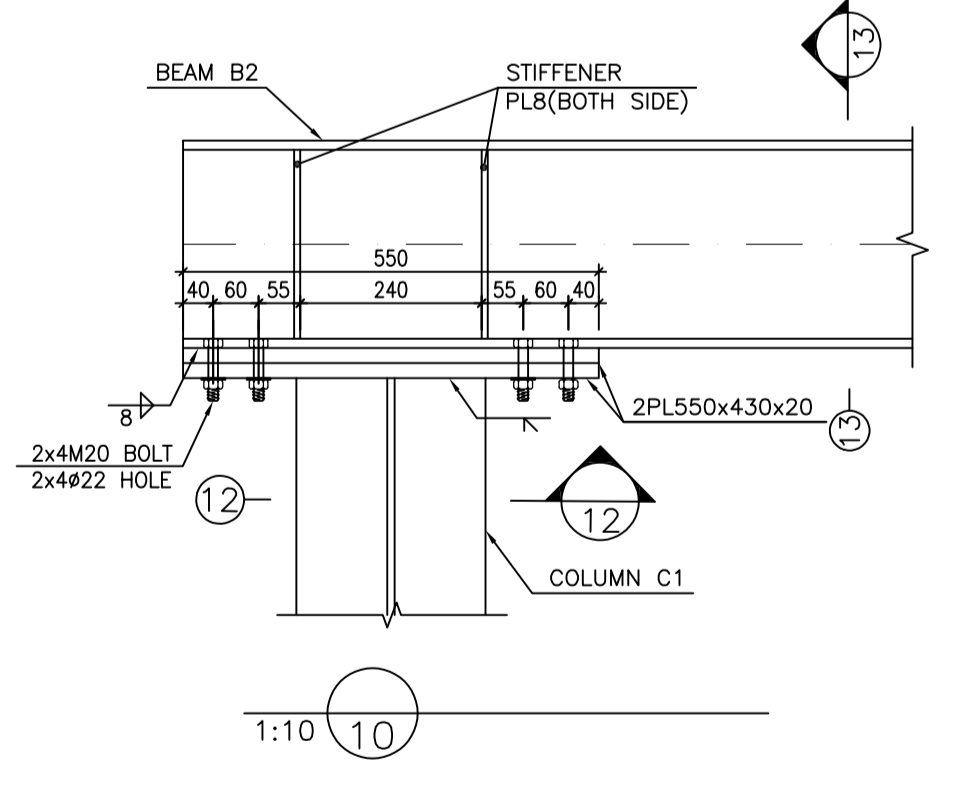
COLUMN C1  
1:10



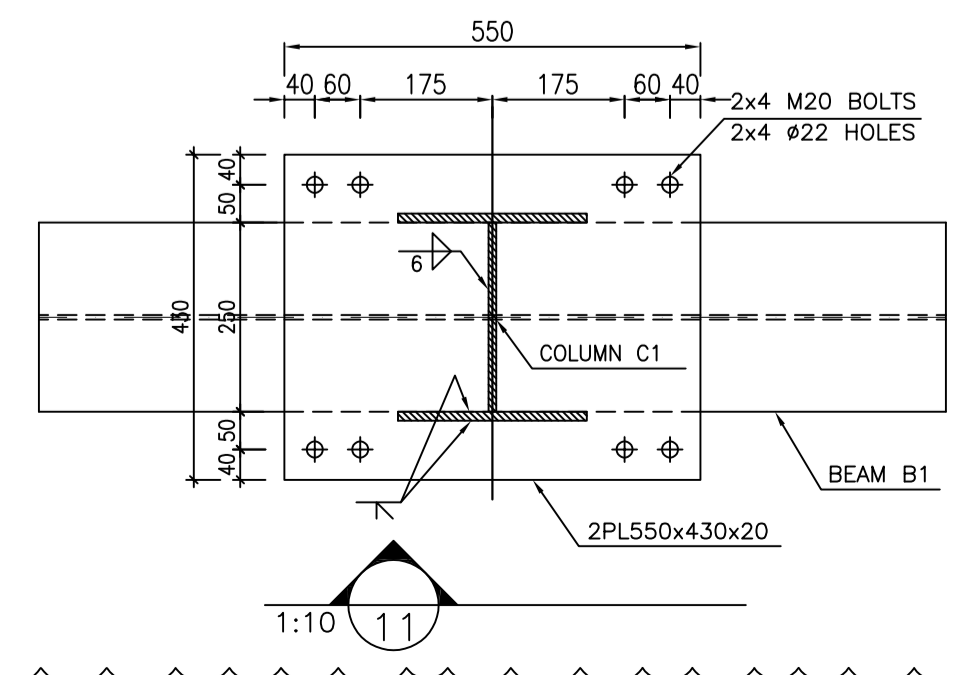
BEAM B1&B2  
1:10



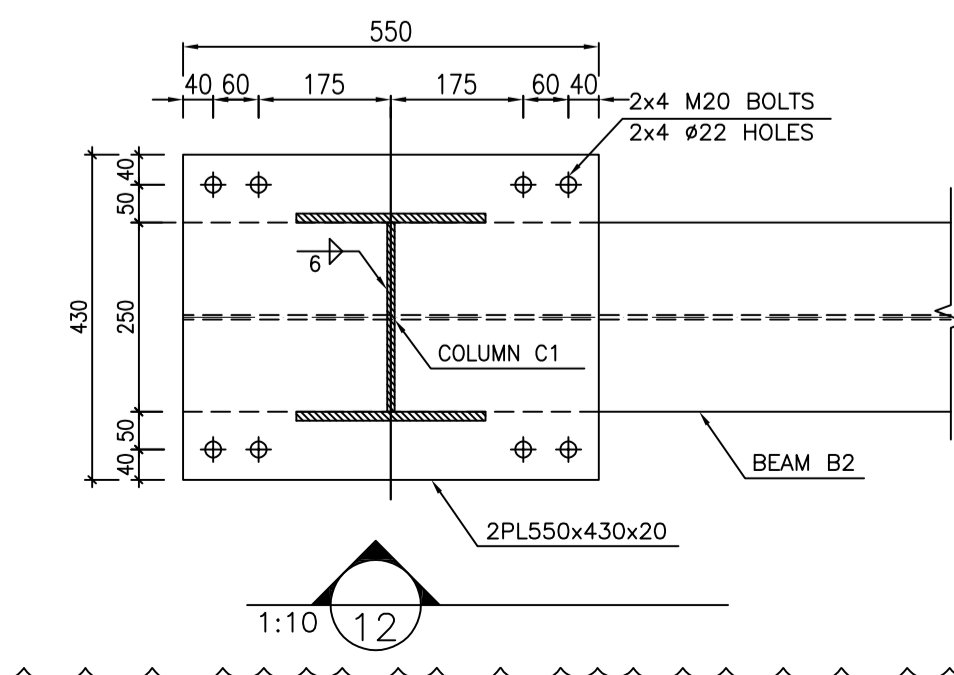
1:10



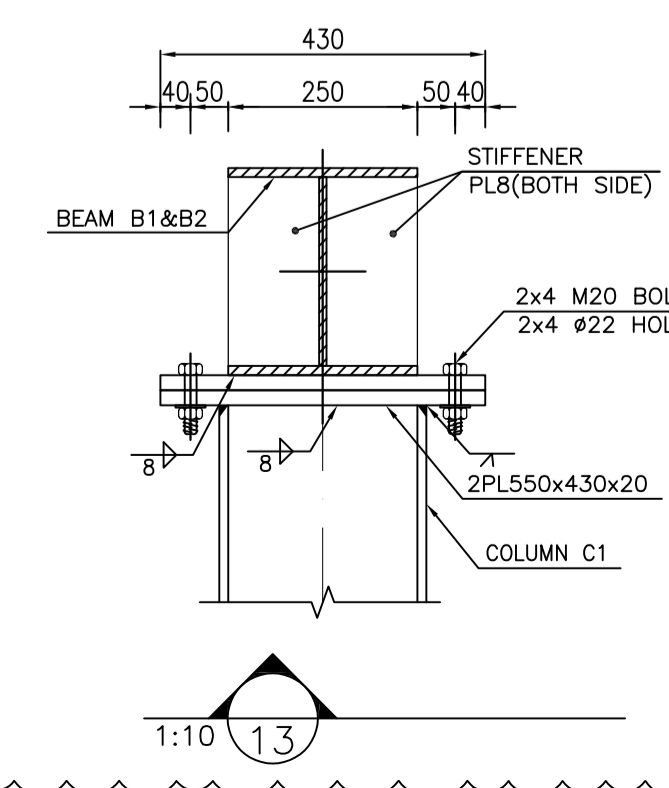
1:10



1:10



1:10



1:10

REV.	DATE	P.O.I.S	PREP.	CHK.	APP.	AUT.
D01	MAY.2024	IFA	R.BERLOUIE	M.FAKHARIAN	S.FARMAZPOUR	**
D00	MAR.2024	IFC	R.BERLOUIE	M.FAKHARIAN	S.FARMAZPOUR	**

PROJECT NAME: BINAK OILFIELD DEVELOPMENT/SURFACE FACILITIES GAS COMPRESSOR STATION

PROJECT NO.: 971020

EPC CONTRACTOR: HIRGAN ENERGY

EPD/EPC CONTRACTOR (GC): PETROIRAN DEVELOPMENT COMPANY

DRAWING TITLE: STRUCTURAL DRAWING FOR SPECIAL PIPE SUPPORTS

SCALE	SIZE	DRAWING NO.	SHEET NO.	REV.	BUDGET REF.	LOCATION	SIZE	CLASS	SERIAL NO.	SHEET	REVISION
AS SHOWN	A1	BK-GCS-PEDCO-120-ST-DW-0050	2 OF 2	D01	053-073-9184	F	4	M	709187	1	D01

REV.	DESCRIPTION	BY	DATE	BY	DATE
***	*****	**	*****	**	*****
REV.	DESCRIPTION	BY <td>DATE <td>BY <td>DATE</td> </td></td>	DATE <td>BY <td>DATE</td> </td>	BY <td>DATE</td>	DATE
		CHECKED		REV. APPR.	

اسم و کلیه نسخ این نقشه و حق اقتباس متعلق به شرکت ملی مناطق نفت خیز جنوب میباشد.

THE ORIGINAL AND ALL COPIES OF THIS DRAWING TOGETHER WITH THE COPYRIGHT THEREIN ARE THE SOLE PROPERTY OF N.I.S.O.C./ FIELDS

BINAK OILFIELD DEVELOPMENT SURFACE FACILITIES GAS COMPRESSOR STATION

DATE	SCALE	DRAWING BY	CHECKED BY	PROJECT ENG.

NO CONSTRUCTION PERMITTED UNLESS DRAWING APPROVED

APPROVED FOR CONSTRUCTION	BY:	DATE: