

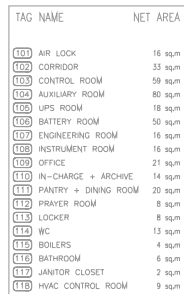
NOTES

LEGEND

REFERENCE DRAWING	DRC. No.

KEY PLAN

[illegible]



CONTROL ROOM EQUIPMENT		
ITEM	EQPT. NO.	DESCRIPTION
(1)	DC UPS	84 YDC UPS
(2)	AC UPS	110 YAC UPS
(3)	ONCR-400-RECP-IMP	CONTROL ROOM EMERGENCY DISTRIBUTION PANEL
(4)	PWR	PURVED 804 64 YAC
(5)	PWR	PURVED 804 110 YAC
(6)	HYD. WASH	HYDRAPAK 300G/300000
(7)	RACK 1	110 YAC BATTERY BANK RACK #1
(8)	RACK 2	110 YAC BATTERY BANK RACK #2
(9)	RACK 3	84 YDC BATTERY BANK RACK #1
(10)	RACK 4	84 YDC BATTERY BANK RACK #2
(11)	DC PAN	DC DISCONNECT PANEL
(12)	INT/NOT	INTERCOM/NOT-ALARM DISTRIBUTION PANEL
(13)	NOT. UPS	NOT-ALARM UPS UNIT

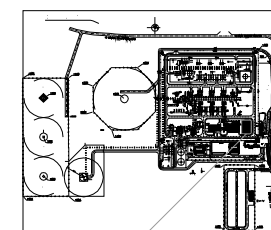
NOTES

1-ALL DIMENSION ARE IN "cm"
2-"EDP" IS AS BELOW:
GCS-400-EDP-CRM: CONTROL ROOM EMERGENCY LIGHTING PANEL
3-ALL INFORMATION DATA, WEIGHTS AND DIMENSIONS SHOWN IN THE
DRAWING SHALL BE VERIFIED AND FINALIZED ACCORDING TO VENDOR
DOCUMENTS

LEGEND

REFERENCE DRAWING	DRG. No.
ARCHITECTURAL DETAIL DRAWING FOR CONTROL BUILDING	BK-GCS-PBDCO-100-AR-00-000
CALCULATION NOTE FOR UPS SYSTEM	BK-GCS-PBDCO-100-EL-CN-000
CALCULATION NOTE FOR DC CHARGER SYSTEM	BK-GCS-PBDCO-100-EL-CN-000

KEY PLAN

[illegible]

