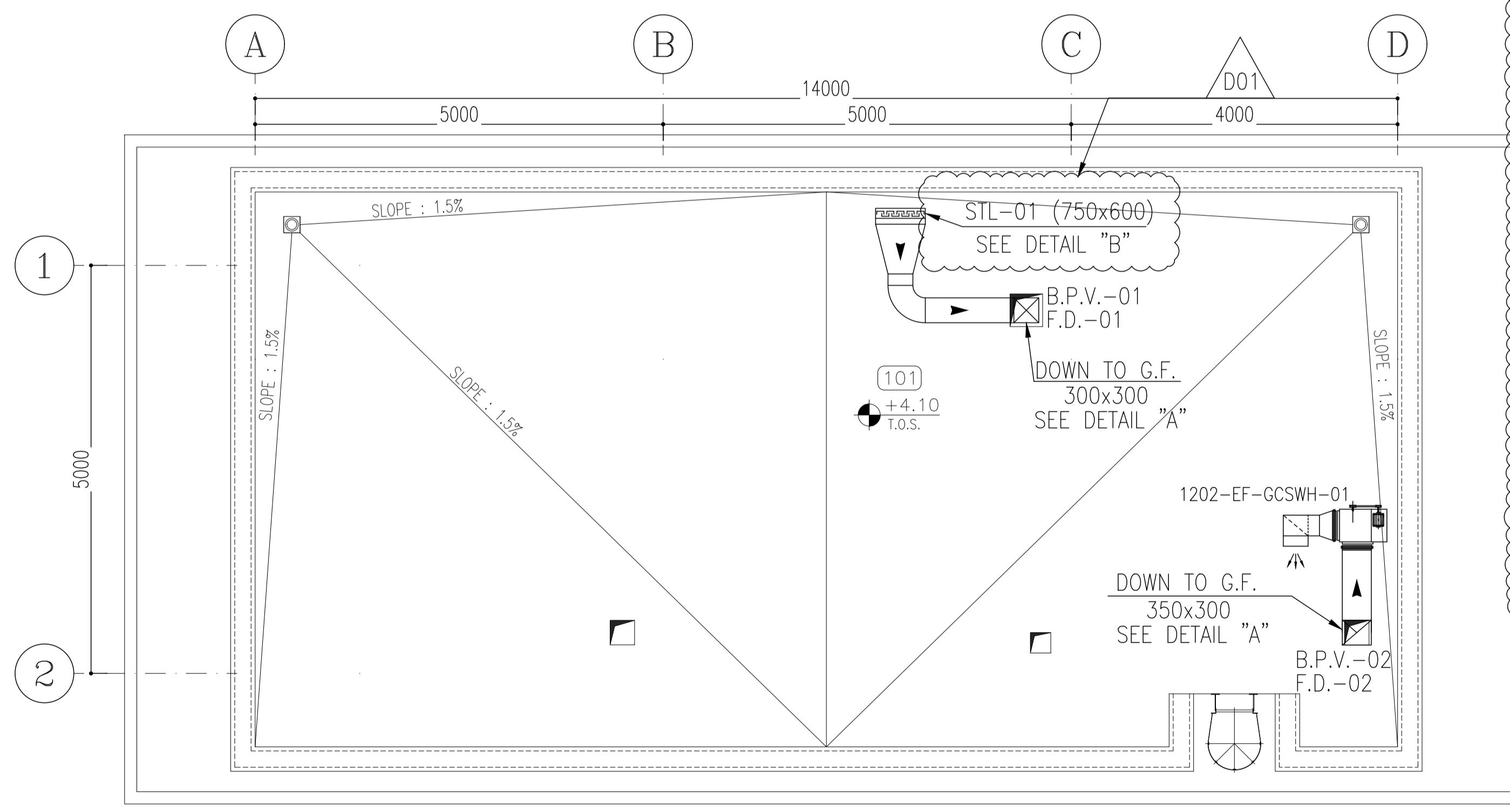
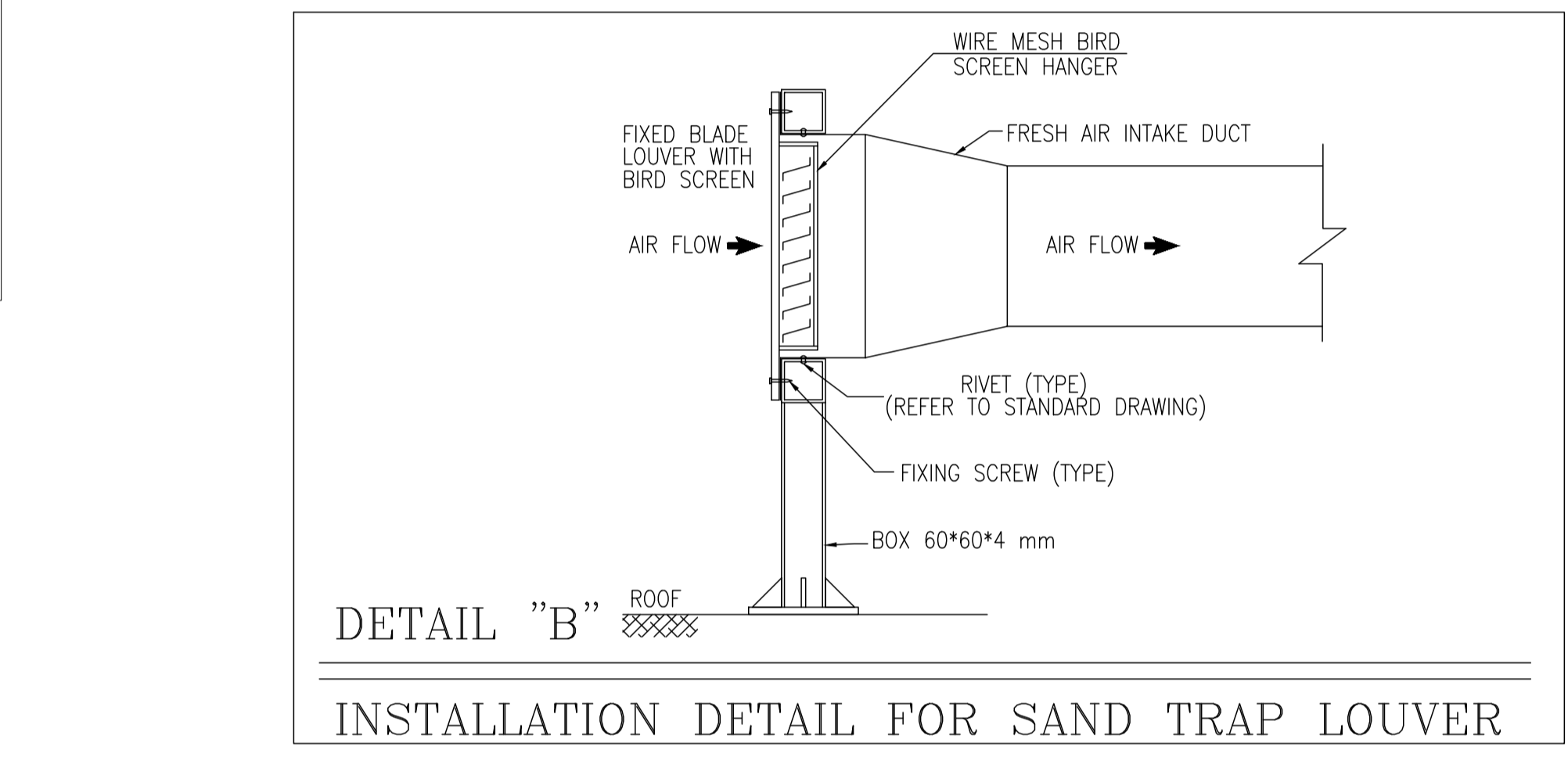
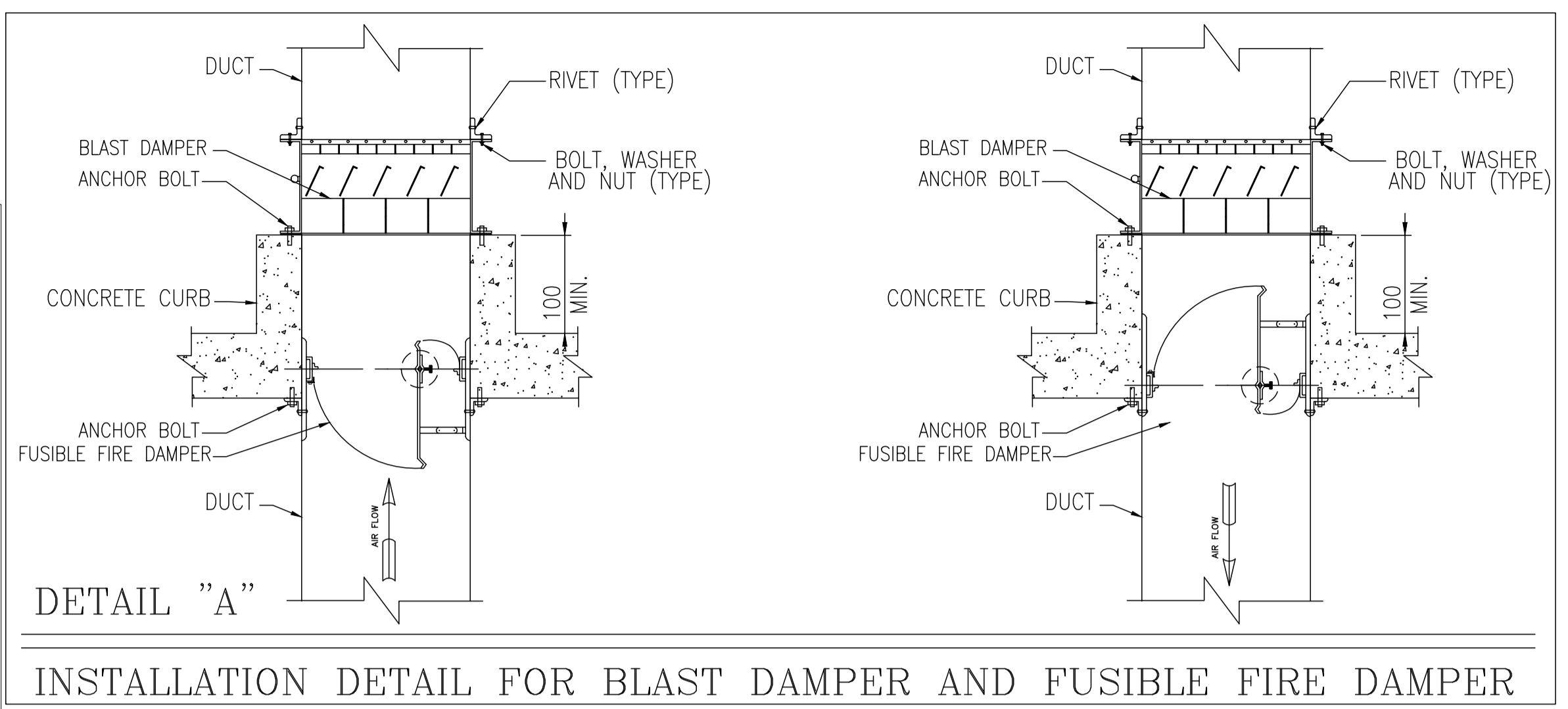


SC.1:50 **1 FLOOR PLAN**  
HVAC System Layout  
(HVAC Ducting)



SC.1:50 **2 ROOF PLAN**  
HVAC System Layout  
(HVAC Ducting)



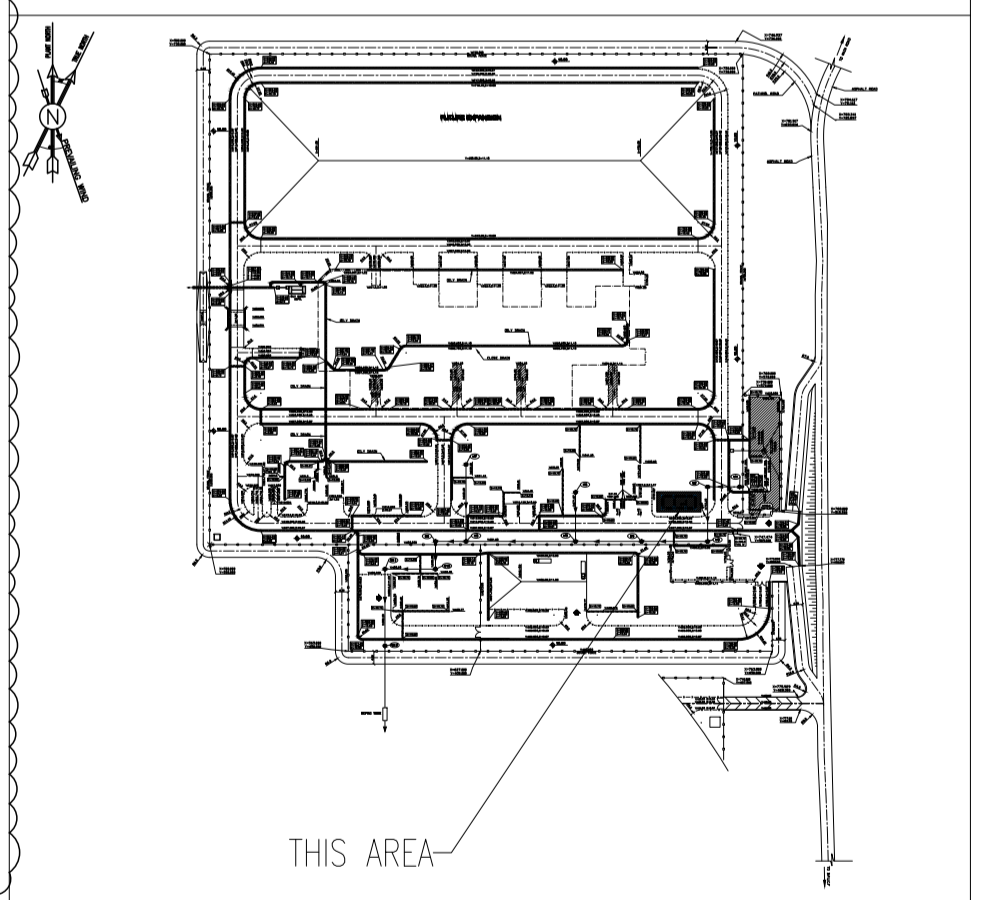
| AIR DIFFUSER AND GRILL SCHEDULE |                           |  |               |      |                 |  |
|---------------------------------|---------------------------|--|---------------|------|-----------------|--|
| TAG NUMBER                      | LOCATION                  | TYPE   | SIZE L*W (MM) | QTY. | FLOW (L/S)-EACH |  |
| S.D.-01                         | STORAGE (100)             | SQUARE SUPPLY AIR DIFFUSER CEILING/DUCT MOUNTED TYPE | 230 150       | 1    | 83              |  |
| S.D.-02                         | INSTRUMENT WORKSHOP (101) | SQUARE SUPPLY AIR DIFFUSER CEILING/DUCT MOUNTED TYPE | 230 230       | 1    | 131             |  |
| S.D.-03                         | INSTRUMENT STORAGE (102)  | SQUARE SUPPLY AIR DIFFUSER CEILING/DUCT MOUNTED TYPE | 230 150       | 1    | 66              |  |
| E.G.-01                         | STORAGE (100)             | SQUARE EXHAUST AIR GRILL CEILING MOUNTED TYPE        | 300 200       | 1    | 83              |  |
| E.G.-02                         | TOILET (103)              | SQUARE EXHAUST AIR GRILL CEILING MOUNTED TYPE        | 150 150       | 1    | 23              |  |
| E.G.-03                         | INSTRUMENT STORAGE (102)  | SQUARE EXHAUST AIR GRILL CEILING MOUNTED TYPE        | 300 300       | 1    | 174             |  |
| D.G.-01                         | INSTRUMENT STORAGE (102)  | SQUARE TRANSFER AIR GRILL DOOR MOUNTED TYPE          | 400 400       | 1    | 115             |  |

|     |                     |
|-----|---------------------|
| 100 | STORAGE             |
| 101 | INSTRUMENT WORKSHOP |
| 102 | INSTRUMENT STORAGE  |
| 103 | TOILET              |
| 104 | ROOF                |
| 105 | WALKWAY             |

- NOTES**
- ALL DIMENSIONS ARE IN MILLIMETER & ALL ELEVATIONS ARE IN METER UNLESS NOTED OTHERWISE.
  - ALL DIMENSIONS AND ELEVATIONS SHALL BE CHECKED BY THE CONTRACTOR PRIOR TO CONSTRUCTION.
  - CONTRACTOR SHALL COMPARE ALL ARCHITECTURAL, MECHANICAL, ELECTRICAL, PIPING AND STRUCTURAL DRAWINGS AND IN CASE OF ANY CONFLICTS OR DISCREPANCY, INFORM THE ENGINEER.
  - ALL MATERIALS ARE SELECTED FROM THE HIGHEST QUALITY AND MUST BE APPROVED BY THE CLIENT.
  - ALL OPENINGS SHALL BE CONSIDERED AS PER RELATED DRAWINGS BEFORE CONSTRUCTION.
  - ALL REFRIGERANT PIPE, FITTING AND INSULATION SHALL BE ACCORDING TO NIBC #14.
  - PIPE SUPPORT DETAIL DRAWING SHALL BE ACCORDING TO STANDARD DRAWING FOR HVAC & PLUMBING.
  - MATERIAL OF CONDENSATE PIPES SHALL BE POLYPROPYLENE (PP) ACCORDING TO ASTM F2389 OR ISIRI 6314-1.2.
  - REFRIGERATION PIPING, FITTING, INSULATION SIZES AND DETAILS WILL BE SPECIFIED BY VENDOR.

- LEGEND**
- EXHAUST FAN
  - INDOOR UNIT WALL TYPE SPLIT AIR CONDITIONER
  - OUTDOOR UNIT SPLIT AIR CONDITIONER
  - SUPPLY AIR DIFFUSER
  - EXHAUST AIR GRILL
  - REFRIGERANT PIPE LINE AND CONNECTING WIRE
  - CONDENSATE PIPE
  - B.O. ... BOTTOM OF ...

| REFERENCE DOCUMENTS                                  | DRG. No.                     |
|--|------------------------------|
| HVAC & PLUMBING DESIGN CRITERIA                      | BK-GNRL-PEDCO-000-HV-DC-0001 |
| SPECIFICATION FOR HVAC EQUIPMENT                     | BK-GNRL-PEDCO-000-HV-SP-0001 |
| SPECIFICATION FOR DUCT WORK & PIPE WORK              | BK-GNRL-PEDCO-000-HV-SP-0002 |
| STANDARD DRAWING FOR HVAC & PLUMBING                 | BK-GNRL-PEDCO-000-HV-DW-0001 |
| SYMBOL & LEGEND FOR HVAC & PLUMBING                  | BK-GNRL-PEDCO-000-HV-DW-0002 |
| HVAC CALCULATION NOTE FOR GCS WAREHOUSE              | BK-GCS-PEDCO-120-HV-CN-0006  |
| DATA SHEETS FOR MAIN HVAC EQUIPMENT OF GCS WAREHOUSE | BK-GCS-PEDCO-120-HV-DT-0004  |
| PLUMBING & SEWAGE PIPING LAYOUT FOR GCS WAREHOUSE    | BK-GCS-PEDCO-120-HV-PY-0017  |
| ARCHITECTURAL DETAIL DRAWING FOR GCS WAREHOUSE       | BK-GCS-PEDCO-120-AR-DW-0002  |
| UNIT PLOT PLAN DRAWING                               | BK-GCS-PEDCO-120-PI-PY-0001  |



| REV. | DATE      | BY  | DATE | DESCRIPTION | CHECKED | REV. APPR. |
|------|-----------|-----|------|-------------|---------|------------|
| D01  | NOV. 2024 | IPA |      |             |         |            |
| D00  | APR. 2024 | IPC |      |             |         |            |

PROJECT NAME: BINAK OILFIELD DEVELOPMENT/SURFACE FACILITIES GAS COMPRESSOR STATION

PROJECT NO.: 971020

EPC CONTRACTOR: HIRGAN ENERGY

EPD/EPC CONTRACTOR (GC): PETROIRAN DEVELOPMENT COMPANY

DRAWING TITLE: HVAC SYSTEM LAYOUT FOR GCS WAREHOUSE

| SCALE    | SIZE | DRAWING NO.                 | SHEET NO. | REV. |
|----------|------|-----------------------------|-----------|------|
| AS SHOWN | A1   | BK-GCS-PEDCO-120-HV-PY-0016 | 01 OF 02  | D01  |

| APPROVED FOR CONSTRUCTION | BY: | DATE: |
|---------------------------|-----|-------|
|                           |     |       |

| BUDGET REF.  | LOCATION | SIZE CLASS | SERIAL NO. | SHEET  | REVISION |
|--------------|----------|------------|------------|--------|----------|
| 053-073-9184 | F        | 4          | B          | 709515 | 01 OF 02 |

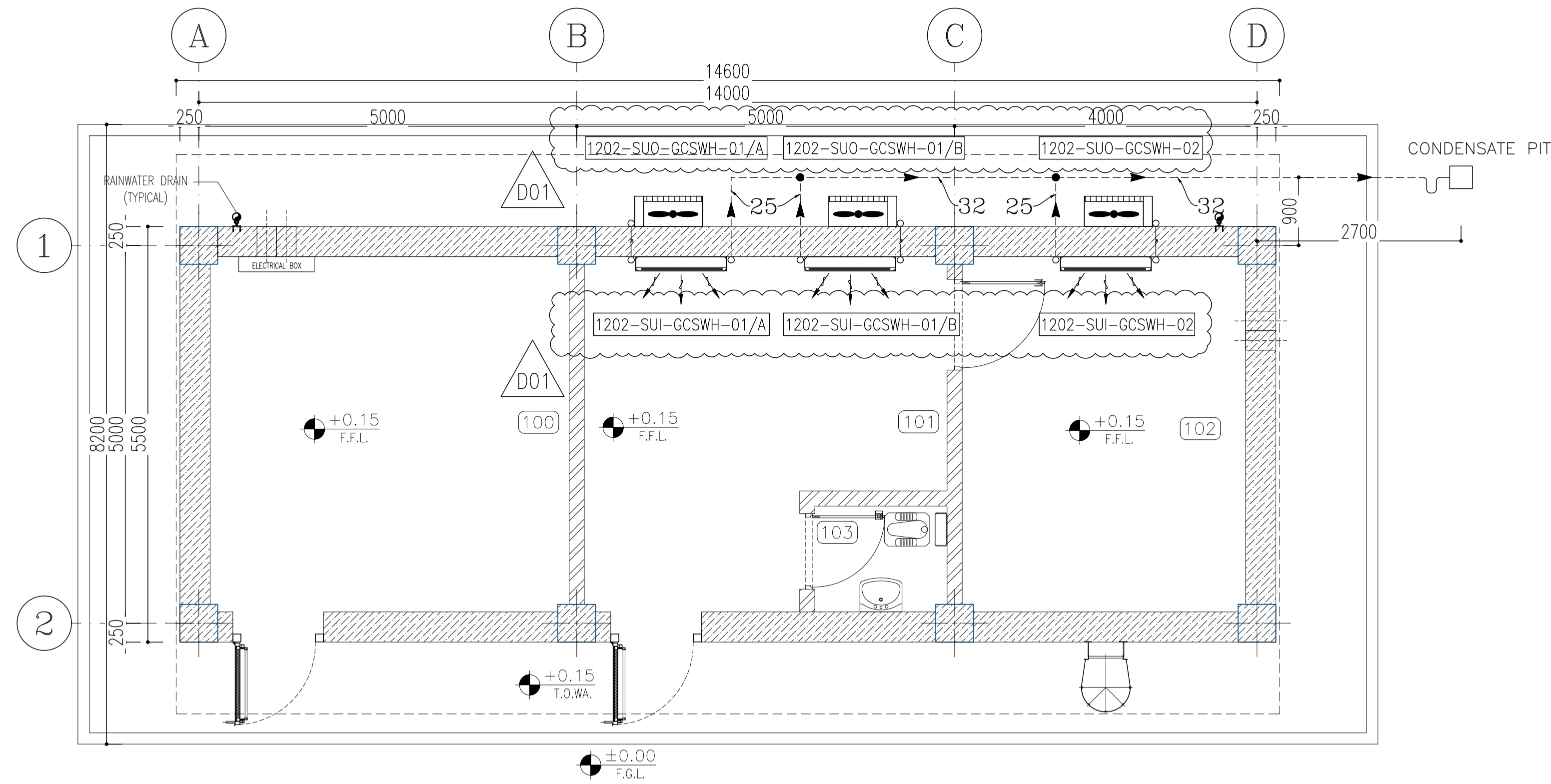
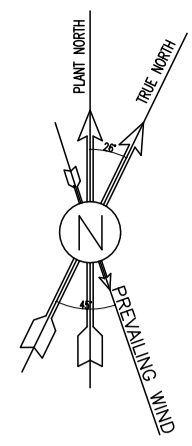
اسم و کلیه نسخ این نقشه و حق اقتباس متعلق به شرکت ملی مناطق نفت خیز جنوب میباشد.

THE ORIGINAL AND ALL COPIES OF THIS DRAWING TOGETHER WITH THE COPYRIGHT THEREIN ARE THE SOLE PROPERTY OF N.I.S.O.C./ FIELDS

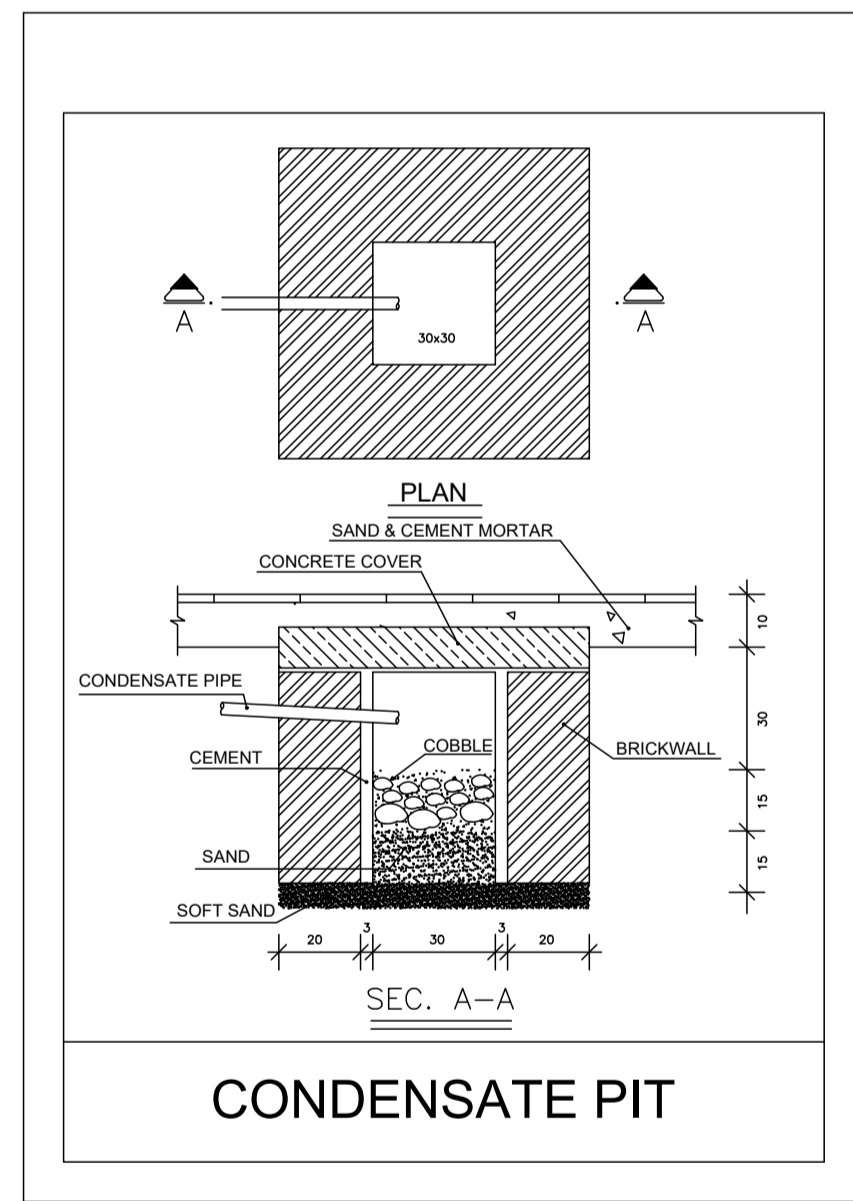
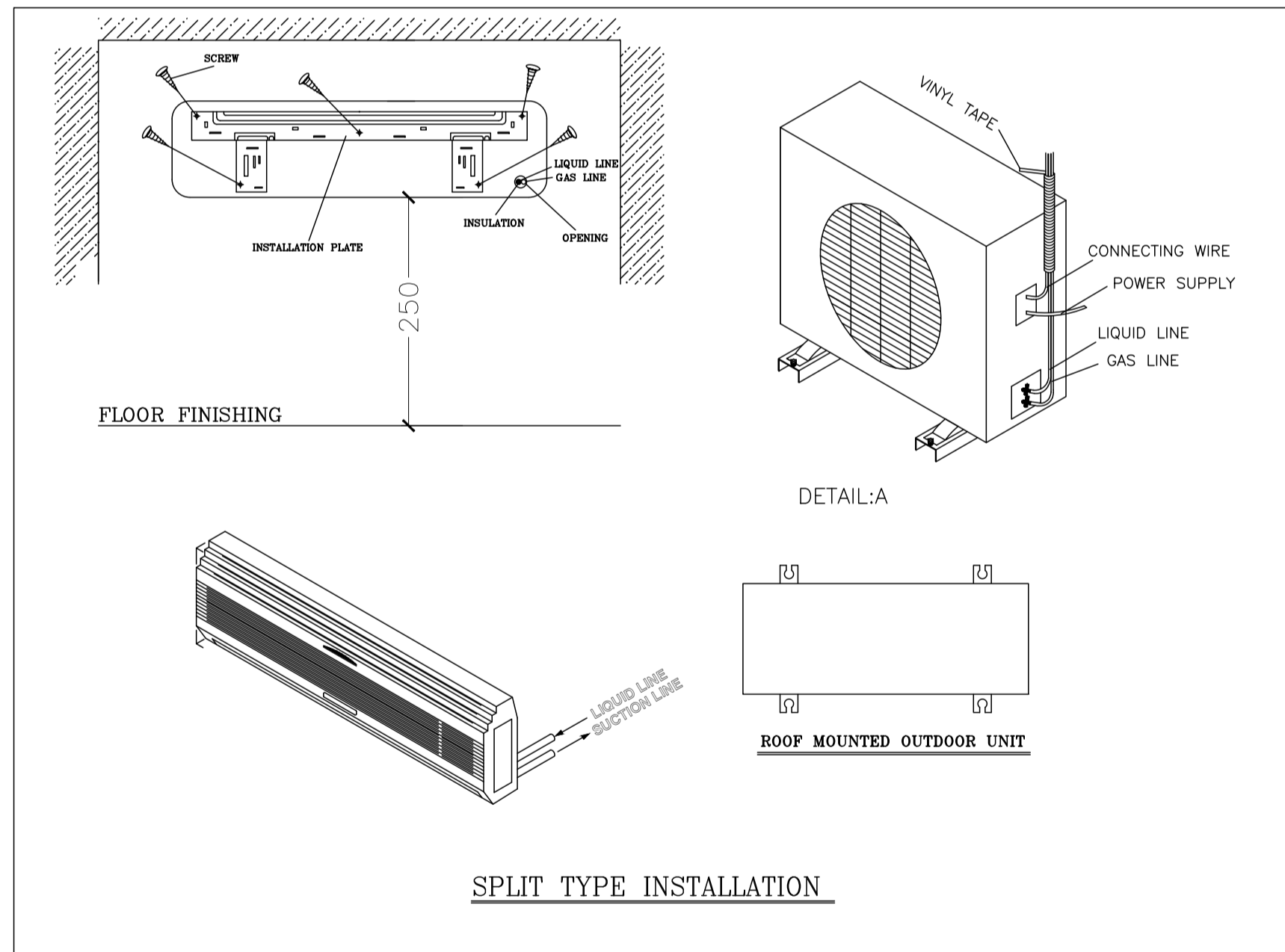
**BINAK OILFIELD DEVELOPMENT SURFACE FACILITIES GAS COMPRESSOR STATION**

| DATE | SCALE | DRAWING BY | CHECKED BY | PROJECT ENG. |
|------|-------|------------|------------|--------------|
|      |       |            |            |              |

NO CONSTRUCTION PERMITTED UNLESS DRAWING APPROVED



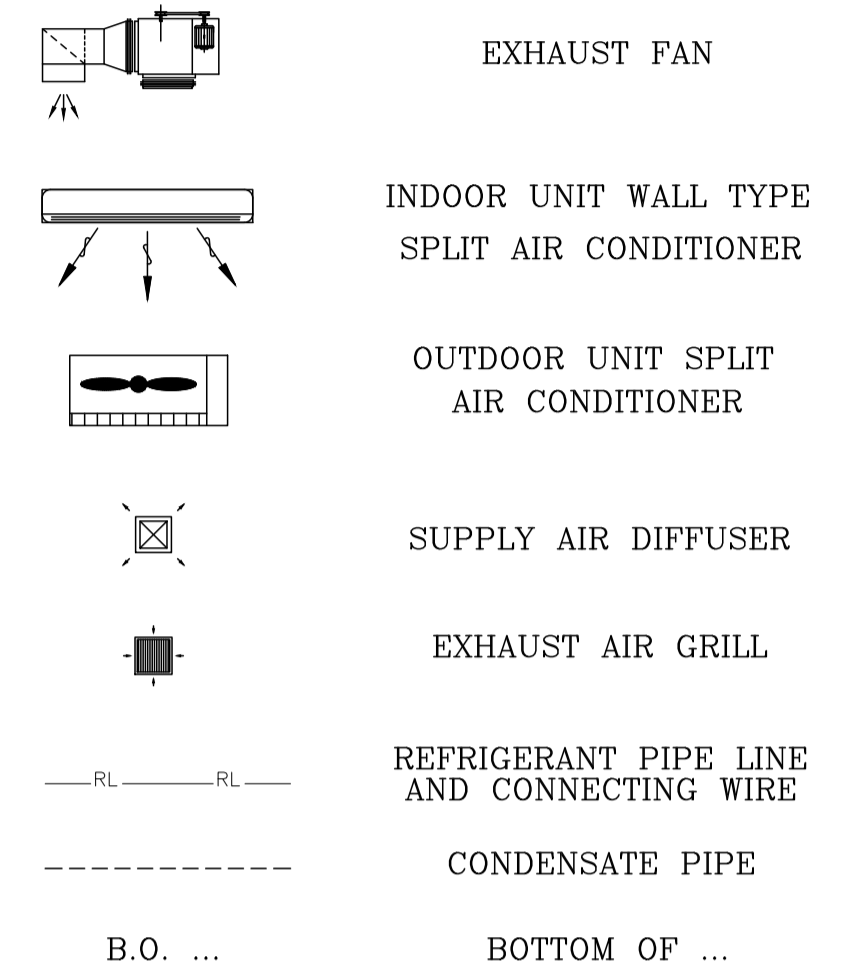
SC.1:50 **1** FLOOR PLAN  
HVAC System Layout  
(Split Unit)



NOTES

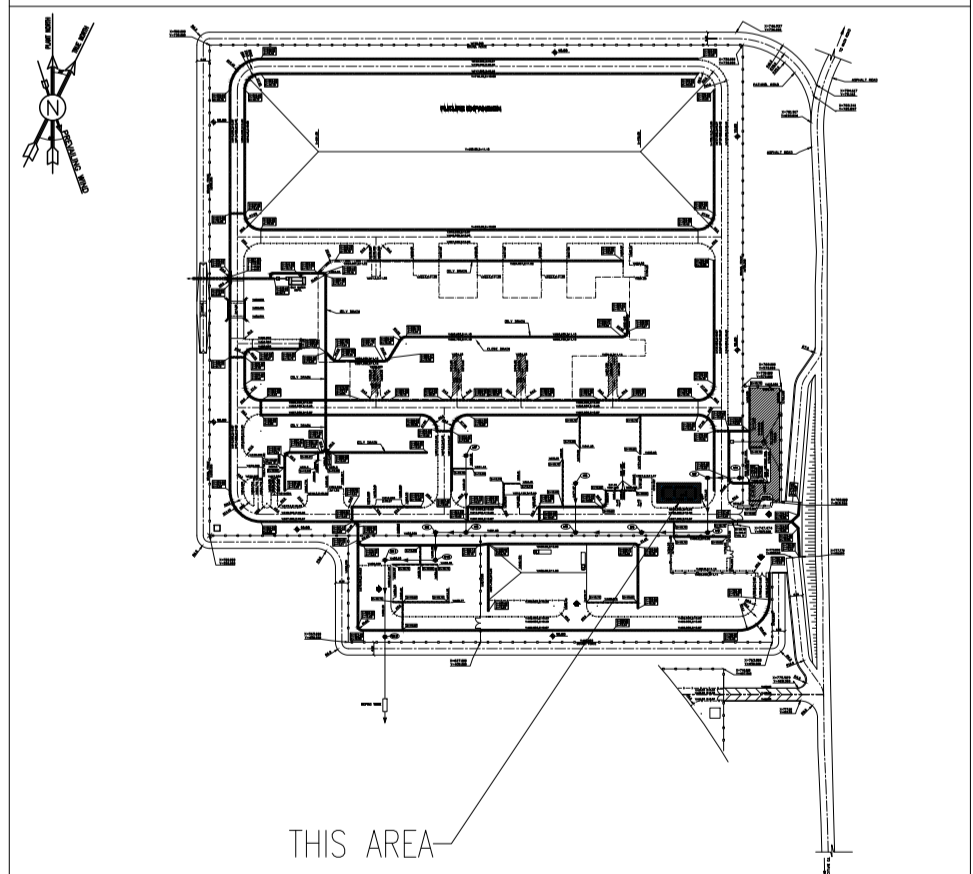
1. ALL DIMENSIONS ARE IN MILLIMETER & ALL ELEVATIONS ARE IN METER UNLESS NOTED OTHERWISE.
2. ALL DIMENSIONS AND ELEVATIONS SHALL BE CHECKED BY THE CONTRACTOR PRIOR TO CONSTRUCTION.
3. CONTRACTOR SHALL COMPARE ALL ARCHITECTURAL, MECHANICAL, ELECTRICAL, PIPING AND STRUCTURAL DRAWINGS AND IN CASE OF ANY CONFLICTS OR DISCREPANCY, INFORM THE ENGINEER.
4. ALL MATERIALS ARE SELECTED FROM THE HIGHEST QUALITY AND MUST BE APPROVED BY THE CLIENT.
5. ALL OPENINGS SHALL BE CONSIDERED AS PER RELATED DRAWINGS BEFORE CONSTRUCTION.
6. ALL REFRIGERANT PIPE, FITTING AND INSULATION SHALL BE ACCORDING TO NIBC #14.
7. PIPE SUPPORT DETAIL DRAWING SHALL BE ACCORDING TO STANDARD DRAWING FOR HVAC & PLUMBING
8. MATERIAL OF CONDENSATE PIPES SHALL BE POLYPROPYLENE (PP) ACCORDING TO ASTM F2389 OR ISIRI 6314-1,2.
9. REFRIGERATION PIPING, FITTING, INSULATION SIZES AND DETAILS WILL BE SPECIFIED BY VENDOR.

LEGEND



| REFERENCE DOCUMENTS                                  | DRG. No.                     |
|--|------------------------------|
| HVAC & PLUMBING DESIGN CRITERIA                      | BK-GNRL-PEDCO-000-HV-DC-0001 |
| SPECIFICATION FOR HVAC EQUIPMENT                     | BK-GNRL-PEDCO-000-HV-SP-0001 |
| SPECIFICATION FOR DUCT WORK & PIPE WORK              | BK-GNRL-PEDCO-000-HV-SP-0002 |
| STANDARD DRAWING FOR HVAC & PLUMBING                 | BK-GNRL-PEDCO-000-HV-DW-0001 |
| SYMBOL & LEGEND FOR HVAC & PLUMBING                  | BK-GNRL-PEDCO-000-HV-DW-0002 |
| HVAC CALCULATION NOTE FOR GCS WAREHOUSE              | BK-GCS-PEDCO-120-HV-CN-0006  |
| DATA SHEETS FOR MAIN HVAC EQUIPMENT OF GCS WAREHOUSE | BK-GCS-PEDCO-120-HV-DT-0004  |
| PLUMBING & SEWAGE PIPING LAYOUT FOR GCS WAREHOUSE    | BK-GCS-PEDCO-120-HV-PY-0017  |
| ARCHITECTURAL DETAIL DRAWING FOR GCS WAREHOUSE       | BK-GCS-PEDCO-120-AR-DW-0012  |
| UNIT PLOT PLAN DRAWING                               | BK-GCS-PEDCO-120-PI-PY-0001  |

KEY PLAN



DX-SPLIT AIR CONDITIONER UNITS

| EQUIPMENT NO.                                  | QTY. | TYPE            | REQUIRED COOLING CAP. SENSIBLE/LATENT (BTU/HR) | REQUIRED HEATING CAP. (BTU/HR) | ACTUAL/NOMINAL CAP. SENSIBLE/LATENT (BTU/HR) | ELECTRIC POWER SUPPLY (V/PH/Hz) | POWER CONSUMPTION (kW) | SERVICE AREA        | REMARK   |
|--|------|-----------------|--|--------------------------------|--|---------------------------------|------------------------|---------------------|--|
| 1202-SUI-GCSWH-01/A,B<br>1202-SUO-GCSWH-01/A,B | 2    | WALL MOUNTED T3 | 14101/9869                                     | 7976                           | BY VENDOR                                    | 230/1/50                        | BY VENDOR              | INSTRUMENT WORKSHOP | INDOOR AND OUTDOOR UNIT WITH THERMOSTAT AND ALL STANDARD ACCESSORY COOLING AND HEATING (HEAT PUMP) |
| 1202-SUI-GCSWH-02<br>1202-SUO-GCSWH-02         | 1    | WALL MOUNTED T3 | 9628/5199                                      | 6845                           | BY VENDOR                                    | 230/1/50                        | BY VENDOR              | RACK ROOM           | INDOOR AND OUTDOOR UNIT WITH THERMOSTAT AND ALL STANDARD ACCESSORY COOLING ONLY                    |

EXHAUST FAN

| EQUIPMENT NO.    | TYPE                 | FLOW (L/S) | TOTAL EXTERNAL PRESSURE DROP* (PA.) | SERVICE AREA  | QTY. | REMARK |
|------------------|----------------------|------------|-------------------------------------|---|------|--------|
| 1202-EF-GCSWH-01 | UTILITY(CENTRIFUGAL) | 279.4      | 342.9                               | STORAGE, INSTRUMENT WORKSHOP, TOILET AND INSTRUMENT STORAGE | 1    | -      |

\*Total Pressure Drop Include Louver and etc. Should Be Specified By Vendor.

|     |                     |
|-----|---------------------|
| 100 | STORAGE             |
| 101 | INSTRUMENT WORKSHOP |
| 102 | INSTRUMENT STORAGE  |
| 103 | TOILET              |
| 104 | ROOF                |
| 105 | WALKWAY             |

| REV.   | DATE       | BY   | DATE      | BY       | DATE         |      |
|--|------------|--|-----------|----------|--------------|------|
| D01  | NOV.2024   | IPA  |           |          |              |      |
| D00  | APR.2024   | IPC  |           |          |              |      |
| REV.   | DATE       | P.O.I.S  | PREP.     | CHK.     | APP.         | AUT. |
| PROJECT NAME: BINAK OILFIELD DEVELOPMENT/SURFACE FACILITIES GAS COMPRESSOR STATION |            |  |           |          |              |      |
| PROJECT NO.: 971020  |            | EPC CONTRACTOR: HIRGAN ENERGY                          |           |          |              |      |
|  |            | EPD/EPC CONTRACTOR (GC): PETROIRAN DEVELOPMENT COMPANY |           |          |              |      |
| DRAWING TITLE: HVAC SYSTEM LAYOUT FOR GCS WAREHOUSE                                |            |  |           |          |              |      |
| SCALE  | SIZE       | DRAWING NO.  | SHEET NO. | REV.     | BUDGET REF.  |      |
| AS SHOWN   | A1         | BK-GCS-PEDCO-120-HV-PY-0016                            | 02 OF 02  | D01      | 053-073-9184 |      |
| APPROVED FOR CONSTRUCTION  |            |  | BY:       | DATE:    |              |      |
| LOCATION   | SIZE CLASS | SERIAL NO.   | SHEET     | REVISION |              |      |
| F  | 4          | B  | 709515    | 02 OF 02 | D01          |      |