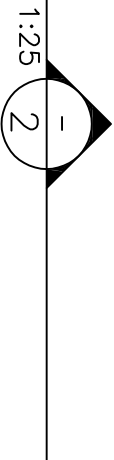
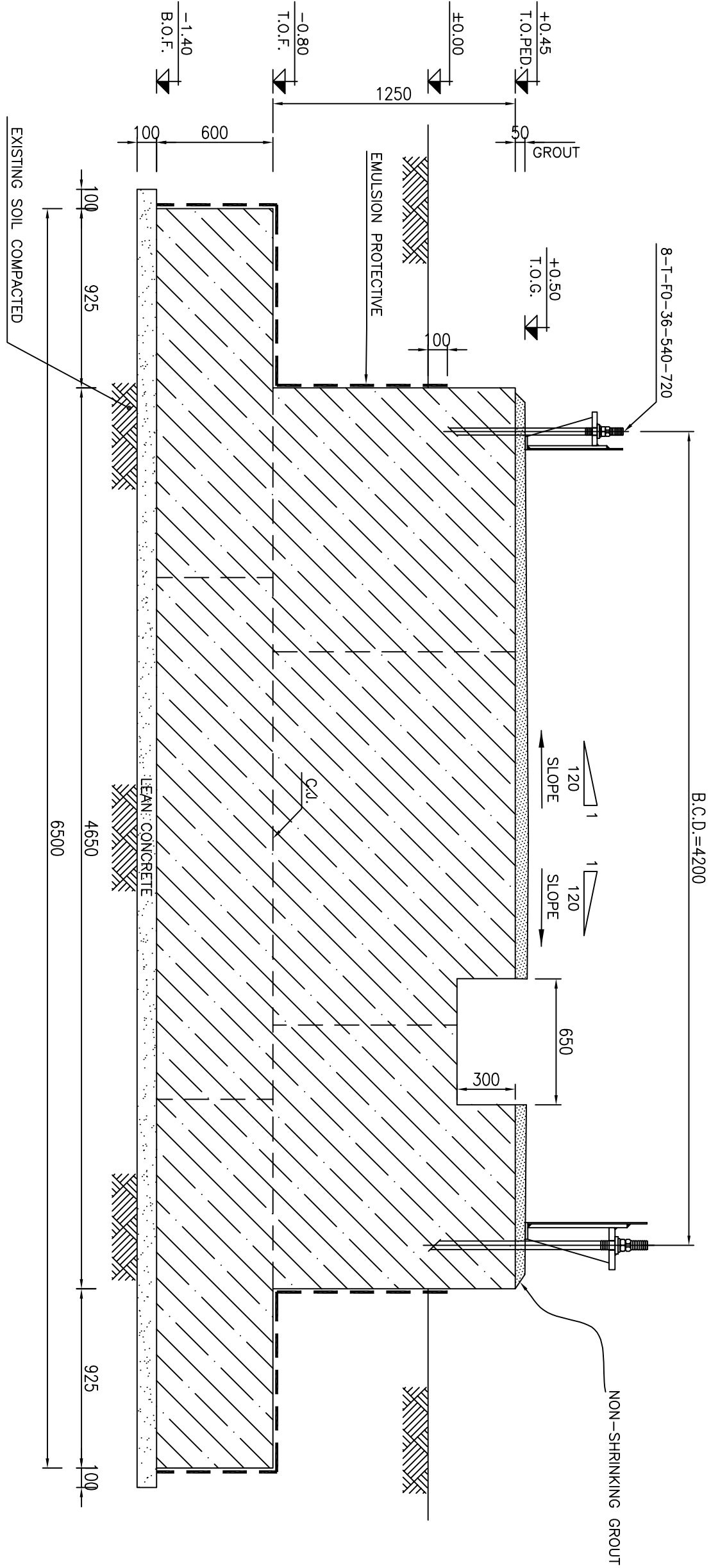


FOUNDATION & PEDESTAL FORMWORK PLAN
TK-2102



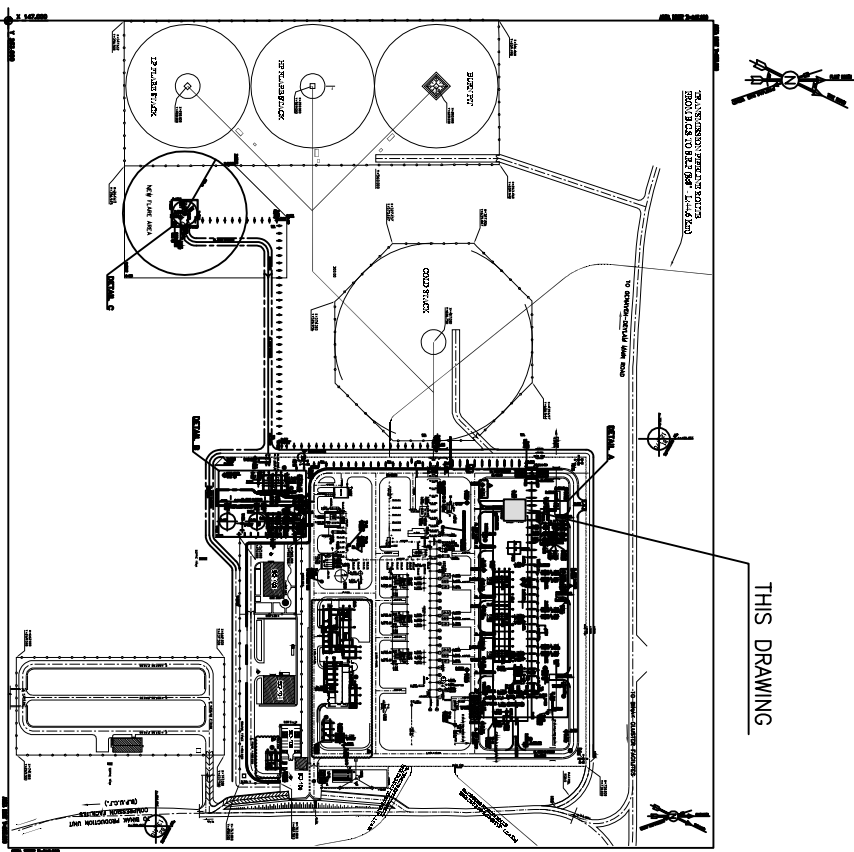
NOTES

- 1) ALL ELEVATIONS AND COORDINATES ARE IN "m" AND DIMENSIONS ARE IN "mm" UNLESS OTHERWISE NOTED.
- 2) ALL DIMENSIONS AND ELEVATIONS SHALL BE CHECKED BY THE CONTRACTOR PRIOR TO CONSTRUCTION.
- 3) 28 DAYS CHARACTERISTIC COMPRESSIVE STRENGTH OF CONCRETE IS 30MPa (ON CYLINDRICAL SPECIMEN)
- 4) 28 DAYS CHARACTERISTIC COMPRESSIVE STRENGTH OF LEAN CONCRETE IS 15MPa (ON CYLINDRICAL SPECIMEN)
- 5) CONCRETE COVER OVER BARS SHALL BE 75mm FOR FOUNDATION AND 40mm FOR CAST IN-SITU OTHER PARTS.
- 6) REINFORCING BARS SHALL BE S400 ACCORDING TO: ISIRI3132 AND INR39 WITH MINIMUM TENSILE YIELD STRENGTH AND N/mm²
- 7) REPORT SUGGESTION
- 8) FILL MATERIAL SHALL BE COMPACTED TO NOT LESS THAN 95% OF (MODIFIED PROCTOR) METHOD.
- 9) REINFORCEMENT SHALL BE ADJUSTED LOCALLY TO SUIT THE RECESS OF ANCHOR BOLTS, HOLES AND OTHER EMBEDDED MATERIALS.
- 10) THE EMULSION SHOULD BE USED ON CONCRETE EXPOSED WITH SOIL PROTECTIVE
- 11) THE GROUT FOR FILLING INNER OF THE TANK MUST BE IN ACCORDING WITH P66089H 6.1 AND OF THE TYPE OF SAND-CLIENT GROUT.
- (SPECIFICATION FOR GROUTING: BK-CNRL-PEDCO-000-ST-SF-0004)

LEGEND AND ABBREVIATION			
	REINFORCED CONCRETE	T.O.F.	TOP OF FOUNDATION
	LEAN CONCRETE	T.O.G.	TOP OF GROUT
	COMPACTED SOIL	B.O.F.	BOTTOM OF FOUNDATION
	GROUT	H.P.P.	HIGH POINT PAVING
		T.O.PED.	TOP OF PEDESTAL

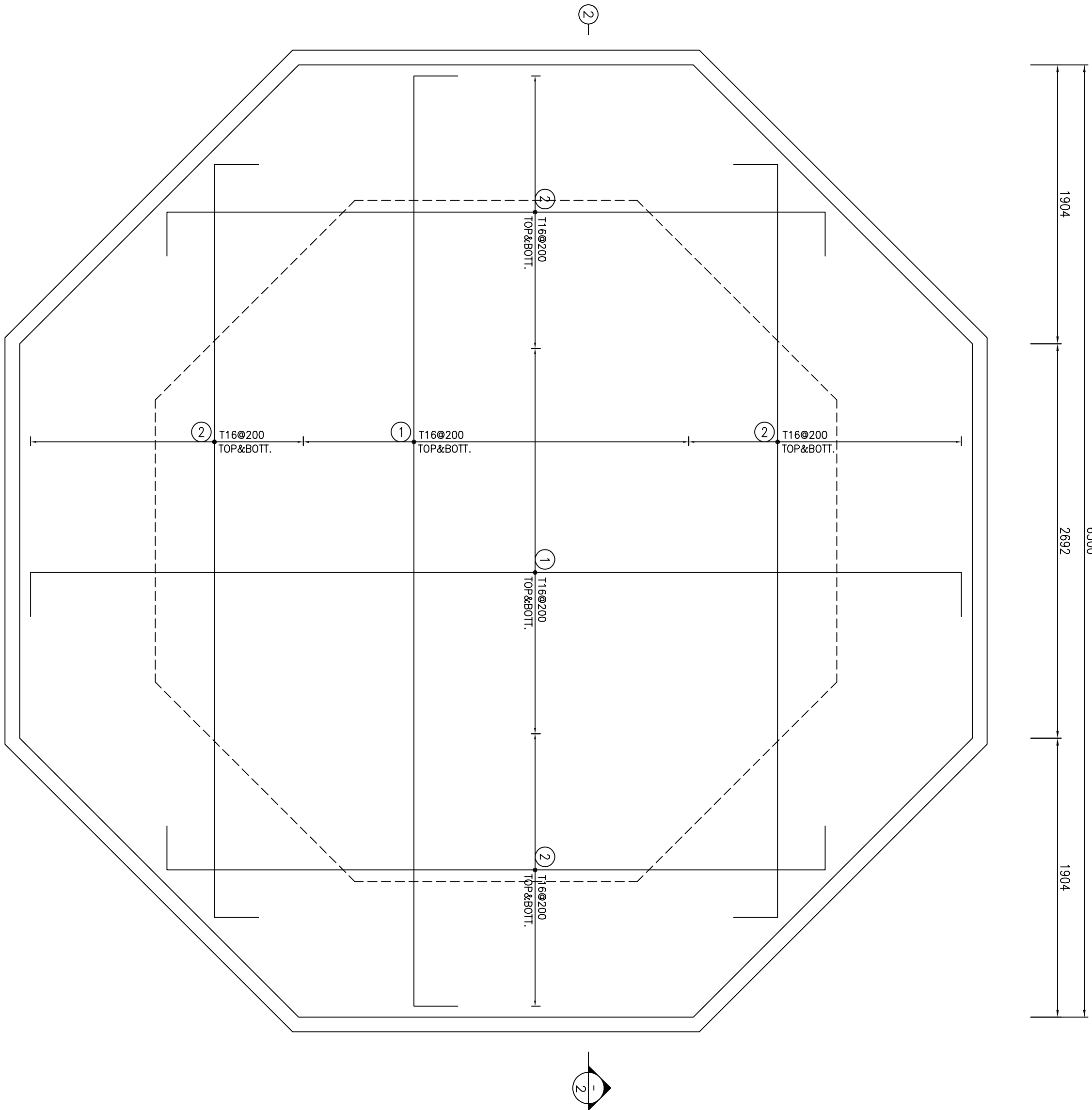
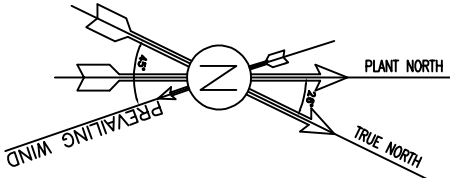
REFERENCE DRAWING		DRG. No.
UNIT PLOT PLAN DRAWING		BK-GCS-PEDCO-120-PJ-PY-0001
STANDARD DRAWING FOR ANCHOR BOLTS		BK-CNRL-PEDCO-000-ST-SF-DW-0002
SPECIFICATION FOR CONCRETE WORK		BK-CNRL-PEDCO-000-ST-SF-SP-0001
SPECIFICATION FOR GROUTING		BK-CNRL-PEDCO-000-ST-SF-SP-0004
GEOTECHNICAL INVESTIGATION REPORT FOR COMPRESSOR STATION		BK-GCS-PEDCO-120-GT-RF-0001

KEY PLAN

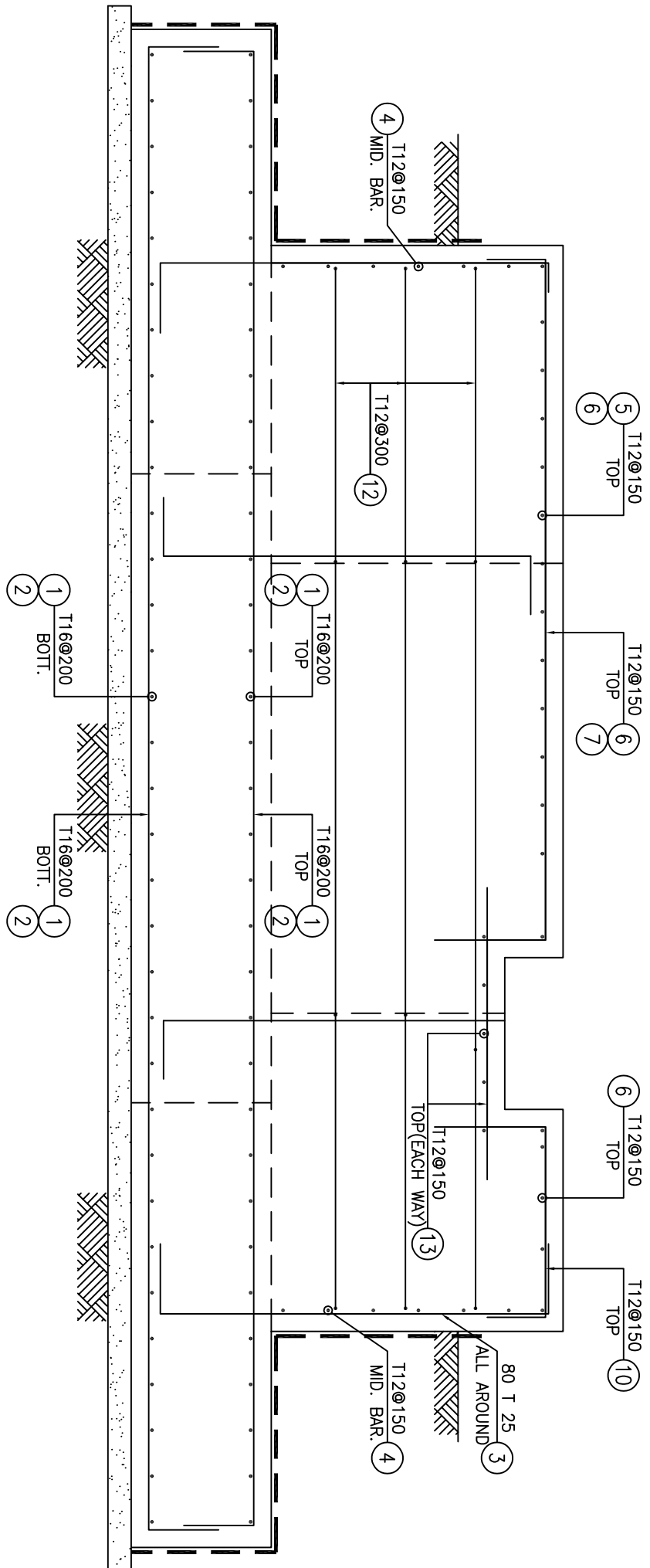


این طرح و نقشه متعلق به شرکت ملی مناطق نفت خیز جنوب است.
THE ORIGINAL AND ALL COPIES OF THIS DRAWING TOGETHER WITH
THE COPYRIGHT THEREIN ARE THE SOLE PROPERTY OF
N.I.S.O.C./ FIELDS

EPC CONTRACTOR:		EPC CONTRACTOR (GC):	
HIRGAN ENERGY - DESIGN & INSPECTION COMPANIES		PETROLIRAN DEVELOPMENT COMPANY	
DRAWING TITLE: FOUNDATION DRAWING FOR LEAN GLYCOL STORAGE TANK (TK-2102)		NO CONSTRUCTION PERMITTED UNLESS DRAWING APPROVED	
SCALE	SIZE	DRAWING NO.	SHEET NO.
AS SHOWN	A1	BK-GCS-PEDCO-120-ST-DW-0023	1 OF 2
REV.		REV.	REV.
D01		D01	D01
REV.		REV.	REV.
D00		D00	D00
REV.		REV.	REV.
D01		D01	D01
REV.		REV.	REV.
D02		D02	D02
REV.		REV.	REV.
D03		D03	D03
REV.		REV.	REV.
D04		D04	D04
REV.		REV.	REV.
D05		D05	D05
REV.		REV.	REV.
D06		D06	D06
REV.		REV.	REV.
D07		D07	D07
REV.		REV.	REV.
D08		D08	D08
REV.		REV.	REV.
D09		D09	D09
REV.		REV.	REV.
D10		D10	D10
REV.		REV.	REV.
D11		D11	D11
REV.		REV.	REV.
D12		D12	D12
REV.		REV.	REV.
D13		D13	D13
REV.		REV.	REV.
D14		D14	D14
REV.		REV.	REV.
D15		D15	D15
REV.		REV.	REV.
D16		D16	D16
REV.		REV.	REV.
D17		D17	D17
REV.		REV.	REV.
D18		D18	D18
REV.		REV.	REV.
D19		D19	D19
REV.		REV.	REV.
D20		D20	D20
REV.		REV.	REV.
D21		D21	D21
REV.		REV.	REV.
D22		D22	D22
REV.		REV.	REV.
D23		D23	D23
REV.		REV.	REV.
D24		D24	D24
REV.		REV.	REV.
D25		D25	D25
REV.		REV.	REV.
D26		D26	D26
REV.		REV.	REV.
D27		D27	D27
REV.		REV.	REV.
D28		D28	D28
REV.		REV.	REV.
D29		D29	D29
REV.		REV.	REV.
D30		D30	D30
REV.		REV.	REV.
D31		D31	D31
REV.		REV.	REV.
D32		D32	D32
REV.		REV.	REV.
D33		D33	D33
REV.		REV.	REV.
D34		D34	D34
REV.		REV.	REV.
D35		D35	D35
REV.		REV.	REV.
D36		D36	D36
REV.		REV.	REV.
D37		D37	D37
REV.		REV.	REV.
D38		D38	D38
REV.		REV.	REV.
D39		D39	D39
REV.		REV.	REV.
D40		D40	D40
REV.		REV.	REV.
D41		D41	D41
REV.		REV.	REV.
D42		D42	D42
REV.		REV.	REV.
D43		D43	D43
REV.		REV.	REV.
D44		D44	D44
REV.		REV.	REV.
D45		D45	D45
REV.		REV.	REV.
D46		D46	D46
REV.		REV.	REV.
D47		D47	D47
REV.		REV.	REV.
D48		D48	D48
REV.		REV.	REV.
D49		D49	D49
REV.		REV.	REV.
D50		D50	D50
REV.		REV.	REV.
D51		D51	D51
REV.		REV.	REV.
D52		D52	D52
REV.		REV.	REV.
D53		D53	D53
REV.		REV.	REV.
D54		D54	D54
REV.		REV.	REV.
D55		D55	D55
REV.		REV.	REV.
D56		D56	D56
REV.		REV.	REV.
D57		D57	D57
REV.		REV.	REV.
D58		D58	D58
REV.		REV.	REV.
D59		D59	D59
REV.		REV.	REV.
D60		D60	D60
REV.		REV.	REV.
D61		D61	D61
REV.		REV.	REV.
D62		D62	D62
REV.		REV.	REV.
D63		D63	D63
REV.		REV.	REV.
D64		D64	D64
REV.		REV.	REV.
D65		D65	D65
REV.		REV.	REV.
D66		D66	D66
REV.		REV.	REV.
D67		D67	D67
REV.		REV.	REV.
D68		D68	D68
REV.		REV.	REV.
D69		D69	D69
REV.		REV.	REV.
D70		D70	D70
REV.		REV.	REV.
D71		D71	D71
REV.		REV.	REV.
D72		D72	D72
REV.		REV.	REV.
D73		D73	D73
REV.		REV.	REV.
D74		D74	D74
REV.		REV.	REV.
D75		D75	D75
REV.		REV.	REV.
D76		D76	D76
REV.		REV.	REV.
D77		D77	D77
REV.		REV.	REV.
D78		D78	D78
REV.		REV.	REV.
D79		D79	D79
REV.		REV.	REV.
D80		D80	D80
REV.		REV.	REV.
D81		D81	D81
REV.		REV.	REV.
D82		D82	D82
REV.		REV.	REV.
D83		D83	D83
REV.		REV.	REV.
D84		D84	D84
REV.		REV.	REV.
D85		D85	D85
REV.		REV.	REV.
D86		D86	D86
REV.		REV.	REV.
D87		D87	D87
REV.		REV.	REV.
D88		D88	D88
REV.		REV.	REV.
D89		D89	D89
REV.		REV.	REV.
D90		D90	D90
REV.		REV.	REV.
D91		D91	D91
REV.		REV.	REV.
D92		D92	D92
REV.		REV.	REV.
D93		D93	D93
REV.		REV.	REV.
D94		D94	D94
REV.		REV.	REV.
D95		D95	D95
REV.		REV.	REV.
D96		D96	D96
REV.		REV.	REV.
D97		D97	D97
REV.		REV.	REV.
D98		D98	D98
REV.		REV.	REV.
D99		D99	D99
REV.		REV.	REV.
D100		D100	D100
REV.		REV.	REV.
D101		D101	D101
REV.		REV.	REV.
D102		D102	D102
REV.		REV.	REV.
D103		D103	D103
REV.		REV.	REV.
D104		D104	D104
REV.		REV.	REV.
D105		D105	D105
REV.		REV.	REV.
D106		D106	D106
REV.		REV.	REV.
D107		D107	D107
REV.		REV.	REV.
D108		D108	D108
REV.		REV.	REV.
D109		D109	D109
REV.		REV.	REV.
D110		D110	D110
REV.		REV.	REV.
D111		D111	D111
REV.		REV.	REV.
D112		D112	D112
REV.		REV.	REV.
D113		D113	D113
REV.		REV.	REV.
D114		D114	D114
REV.		REV.	REV.
D115		D115	D115
REV.		REV.	REV.
D116		D116	D116
REV.		REV.	REV.
D117		D117	D117

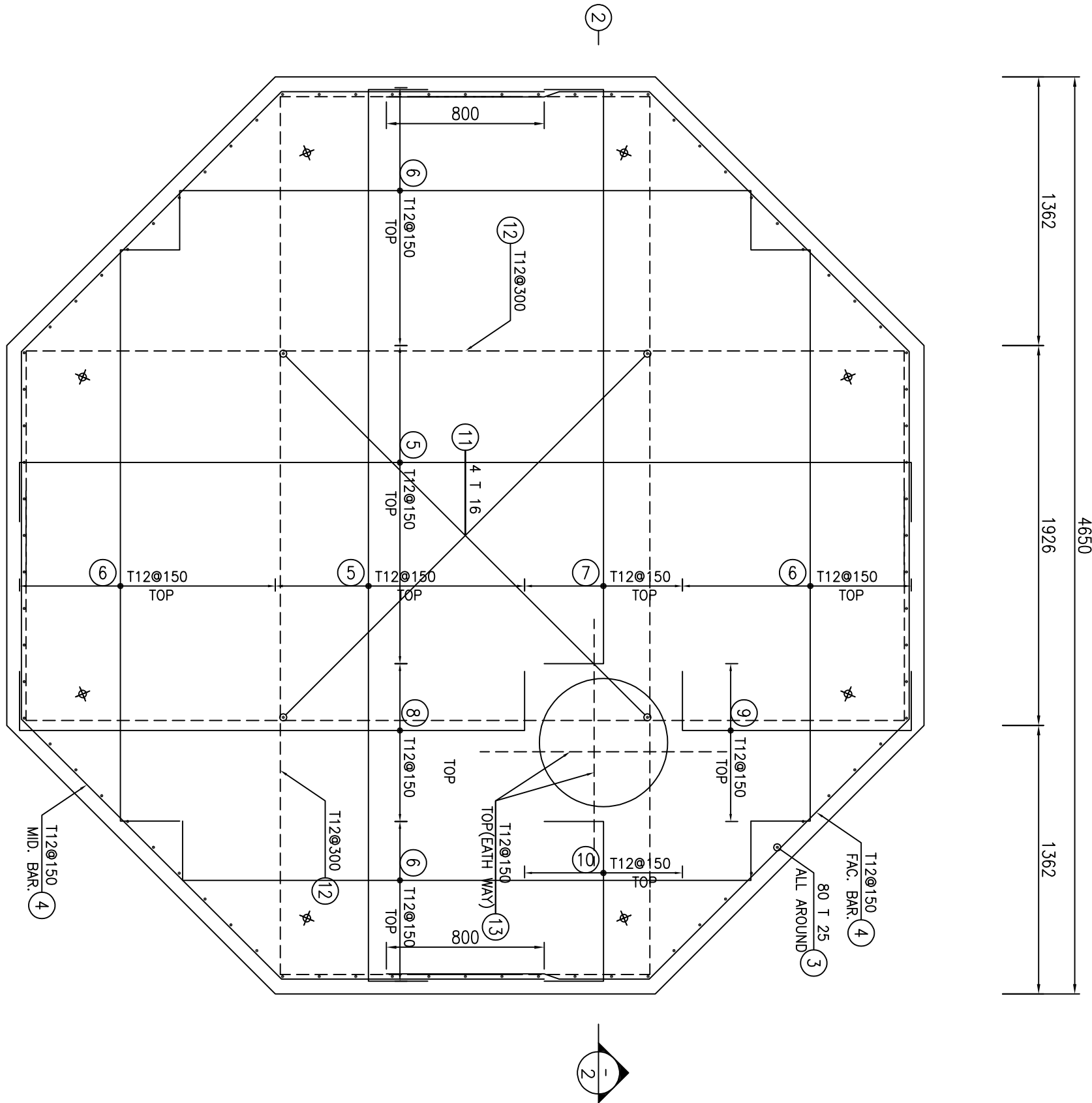


FOUNDATION REINFORCEMENT PLAN
TK-2102



1:25

BAR BENDING SCHEDULE							
Pos	Spec.	Shape	L/A	No.	T12	T16	T25
1	T16	250 6350 1250	6.85	56		353.60	
2	T16	250 6525-2550 1250	6750-3050	80		392.00	
3	T25	500 1700 1500	2.70	80			216.00
4	T16	500 1850 1850 500	6.55	18		117.90	
5	T16	250 1350 1250	1.85	968		1790.80	
6	T12	100 400 100	0.60	180	108.00		
7	T12	500 2800 1250	3.60	7	25.20		
8	T12	500 3000 1250	3.70	7	25.90		
9	T12	500 1200 1250	1.90	7	13.50		
10	T12	500 800 1250	1.50	7	10.50		
11	T16	250 1800 1250	2.10	4		8.40	
12	T12	200 4450 1250	4.85	16	77.60		
13	T12	1250	1.25	14	17.50		
TOTAL LENGTH OR AREA (m)					279.00	2684.30	216.00
UNIT WEIGHT (kg/m)					0.888	1.578	7.99
WEIGHT (kg)					246.87	4248.10	1725.84
GRAND TOTAL (kg)					~ 6300 kg.		



PEDESTAL TOP REINFORCEMENT PLAN
TK-2102

NOTES

- 1) ALL ELEVATIONS AND COORDINATES ARE IN "m" AND DIMENSIONS ARE IN "mm" UNLESS OTHERWISE NOTED.
- 2) ALL DIMENSIONS AND ELEVATIONS SHALL BE CHECKED BY THE CONTRACTOR PRIOR TO CONSTRUCTION.
- 3) 28 DAYS CHARACTERISTIC COMPRESSIVE STRENGTH OF CONCRETE IS 30MPa (ON CYLINDRICAL SPECIMEN)
- 4) 28 DAYS CHARACTERISTIC COMPRESSIVE STRENGTH OF LEAN CONCRETE IS 15MPa (ON CYLINDRICAL SPECIMEN)
- 5) CONCRETE COVER OVER BARS SHALL BE 75mm FOR FOUNDATION AND 40mm FOR CAST IN-SITU OTHER PARTS.
- 6) REINFORCING BARS SHALL BE S400 ACCORDING TO: ISIRI3132 AND INRC3 WITH MINIMUM TENSILE YIELD STRENGTH 400 N/mm²
- 7) REPORT SUGGESTION.
- 8) THE MATERIAL SHALL BE COMPACTED TO NOT LESS THAN 95% OF (MODIFIED PROCTOR) METHOD.
- 9) REINFORCEMENT SHALL BE ADJUSTED LOCALLY TO SUIT THE RECESS OF ANCHOR BOLTS, HOLES AND OTHER EMBEDDED MATERIALS.
- 10) THE EMULSION SHOULD BE USED ON CONCRETE EXPOSED WITH SOIL PROTECTIVE.
- 11) THE MATERIAL IS CONTROLLED ACCORDING TO THE FOLLOWING STANDARDS: ASTM D1227, ASTM D2939, ASTM D1640
- 12) THE GROUP FOR FILLING LINER OF THE TANK MUST BE IN ACCORDING WITH PARAGRAPH 6.1 AND OF THE TYPE OF SAND-CLAY GROUT.
- 13) SPECIFICATION FOR GROUTING: BK-CNS-PEDCO-000-ST-SP-0004

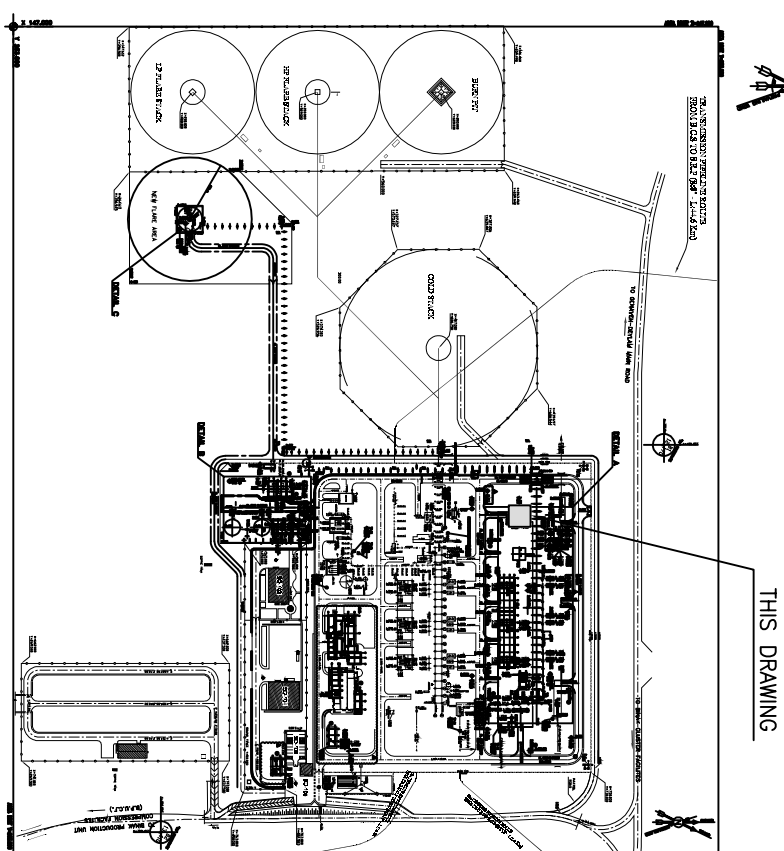
LEGEND AND ABBREVIATION

	REINFORCED CONCRETE	T.O.F.	TOP OF FOUNDATION
	LEAN CONCRETE	B.O.F.	BOTTOM OF FOUNDATION
	COMPACTED SOIL	H.P.P.	HIGH POINT PAVING
	GROUT	T.O.FED.	TOP OF PEDESTAL

REFERENCE DRAWING

UNIT PLOT PLAN DRAWING	DRG. No.
BK-GCS-PEDCO-120-PJ-PY-0001	
STANDARD DRAWING FOR ANCHOR BOLTS	BK-CNSAL-PEDCO-000-ST-DW-0002
SPECIFICATION FOR CONCRETE WORK	BK-CNSAL-PEDCO-000-ST-SP-0001
SPECIFICATION FOR GROUTING	BK-CNSAL-PEDCO-000-ST-SP-0004
GEOTECHNICAL INVESTIGATION REPORT FOR COMPRESSOR STATION	BK-GCS-PEDCO-120-GT-RF-0001

KEY PLAN



***	*****	00.00	000.0000	00.00	000.00000
REV	DESCRIPTION	BY	DATE	BY	DATE
		CHECKED		REV. APPR.	
	امراء و كلفه سبعا لفرع و حركه انشغال مطابق مع ذكركم ملو مطابق مع ذكركم بغير مخالفة				
THE ORIGINAL AND TWO COPIES OF THIS DRAWING TOGETHER WITH THE COPYRIGHT THEREON ARE THE SOLE PROPERTY OF N.I.S.O.C./ FIELDS					

EPC CONTRACTOR: EPC/EPCC CONTRACTOR (GC):

HIRGAN ENERGY - DESIGN & INSPECTION

PEPCO

PETROLIRAN DEVELOPMENT COMPANY

NO CONSTRUCTION PERMITTED UNLESS DRAWING APPROVED

APPROVED FOR CONSTRUCTION

BUDGET REF. LOCATION SIZE CLASS SERIAL NO. SHEET REVISION

AS SHOWN A1 BK-GCS-PEDCO-120-ST-DW-0023 2 OF 2 D01 079-603-9184 F 4 Q 709160 01 D01