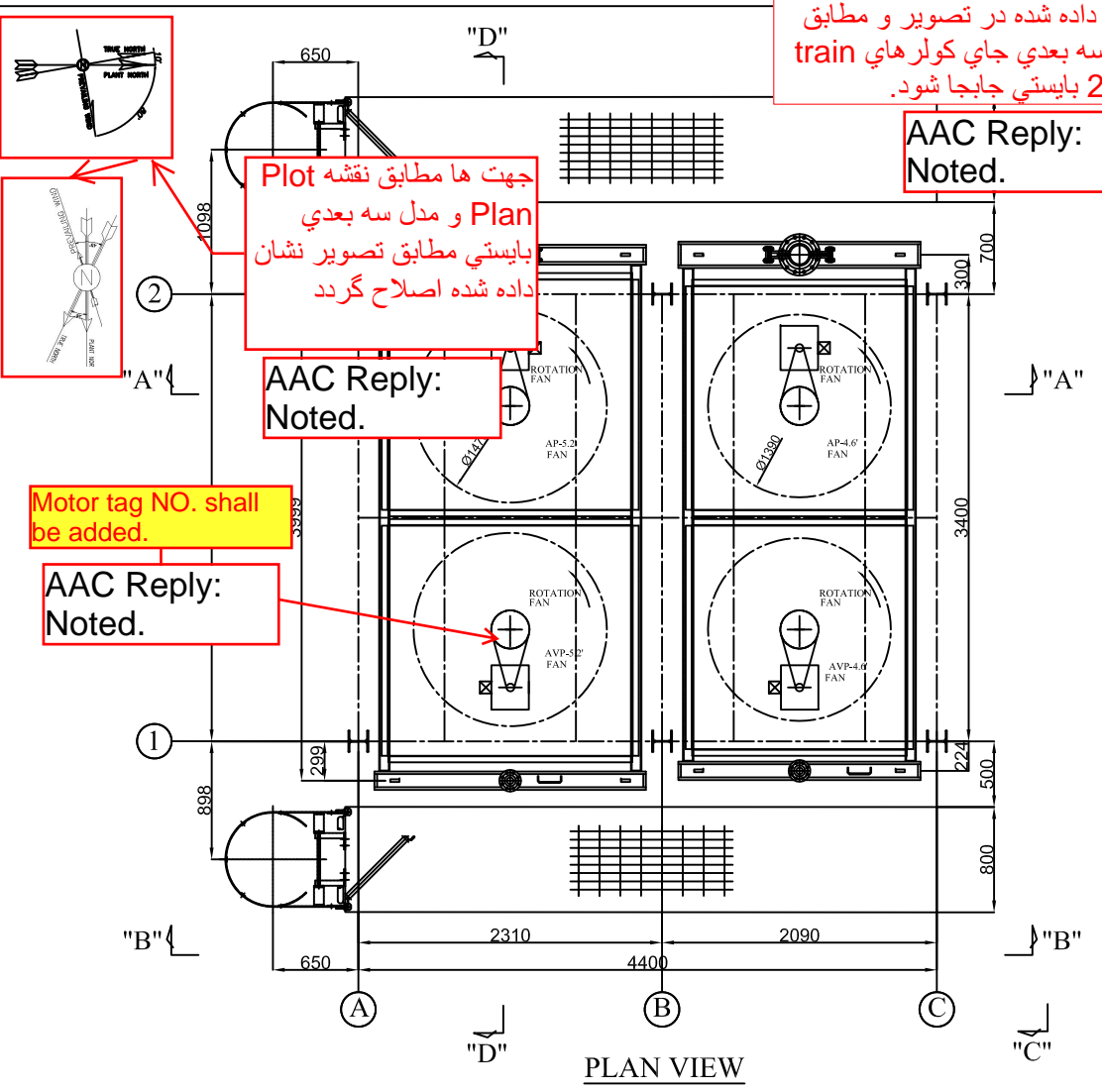


با توجه به جهت Plant North نشان داده شده در تصویر و مطابق مدل سه بعدی جای کولرهای train 1 و 2 بایستی جابجا شود.



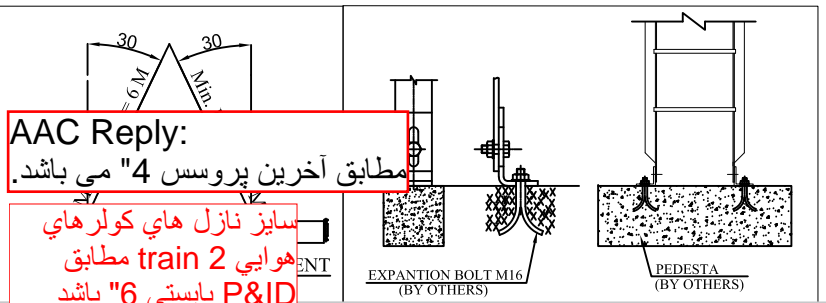
جهت ها مطابق نقشه Plot و مدل سه بعدی بایستی مطابق تصویر نشان داده شده اصلاح گردد.

AAC Reply: Noted.

Motor tag NO. shall be added.

AAC Reply: Noted.

TOTALLY REVISED



AAC Reply: مطابق آخرین پروسس "4" می باشد.

سایز نازل های کولرهای هوایی 2 train مطابق P&ID بایستی "6" باشد

NOZZLE DATA (AE-2102)						
MARK	QTY.	SIZE	RATING	FLANGE FACE	TYPE	SCH/THK
N1	1	4"	600#	RF/SMOOTH	ANSI B16.5 W.N.	80S
N2	1	4"	600#	RF/SMOOTH	ANSI B16.5 W.N.	80S
TI	2	1"	600#	RF/SMOOTH	ANSI B16.5 L.W.N.	14.3
PI	2	3/4"	600#	RF/SMOOTH	ANSI B16.5 L.W.N.	14.5
V	1	2"	600#	RF/SMOOTH	ANSI B16.5 L.W.N.	16.6
D	1	2"	600#	RF/SMOOTH	ANSI B16.5 L.W.N.	16.6

NOZZLE	FORCES (N)			Moments (N.M)		
	Fx	Fy	Fz	Mx	My	Mz
N1	10020	8010	10020	2430	3660	2430
N2	10020	8010	10020	2430	3660	2430

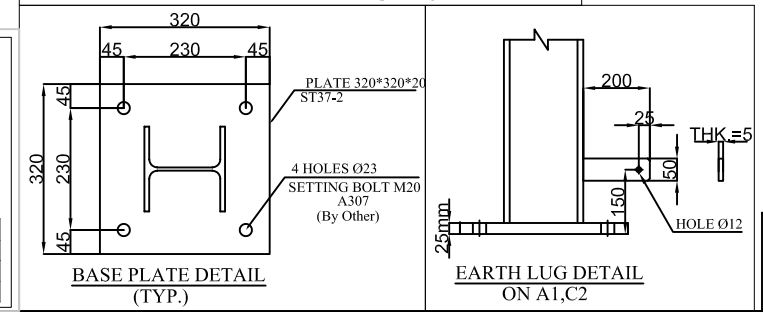
AAC Reply: با توجه به "4" بودن نازلها، این جدول درست می باشد.

Nozzle loads shall be changed ACC. to correct size.

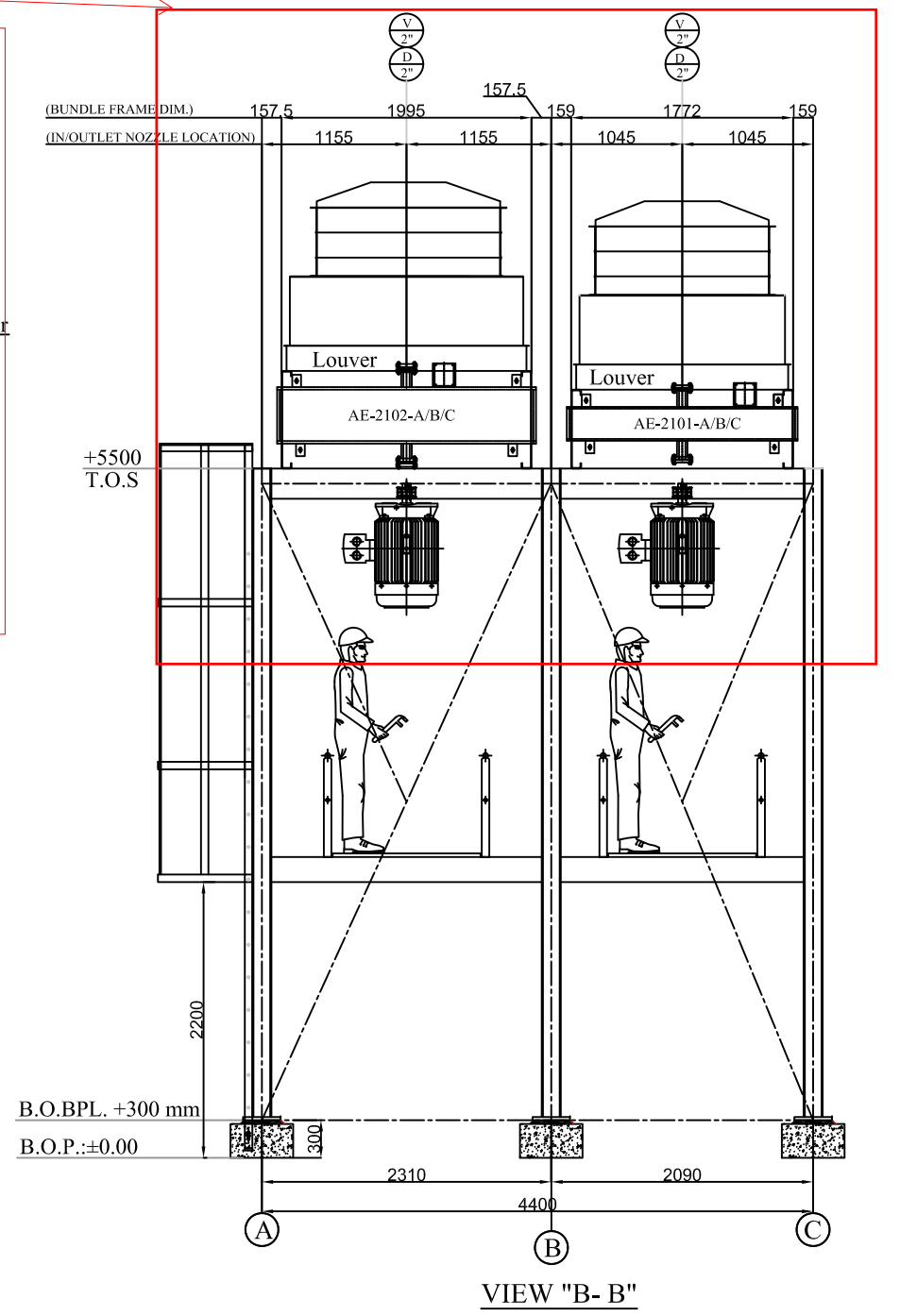
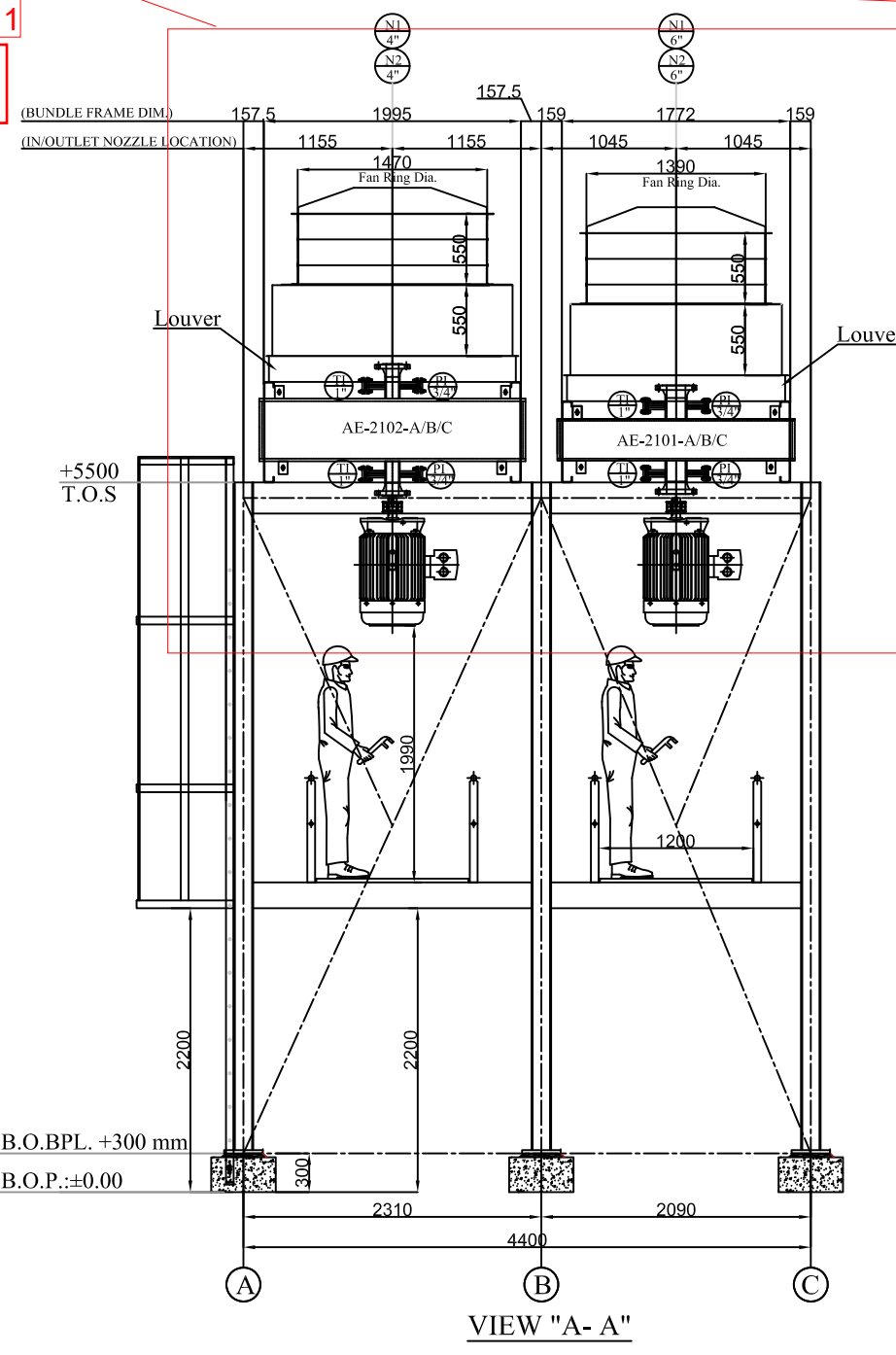
NOZZLE DATA (AE-2101)						
MARK	QTY.	SIZE	RATING	FLANGE FACE	TYPE	SCH/THK
N1	1	6"	300#	RF/SMOOTH	ANSI B16.5 W.N.	80S
N2	1	6"	300#	RF/SMOOTH	ANSI B16.5 W.N.	80S
TI	2	1"	300#	RF/SMOOTH	ANSI B16.5 L.W.N.	14.3
PI	2	3/4"	300#	RF/SMOOTH	ANSI B16.5 L.W.N.	14.25
V	1	2"	300#	RF/SMOOTH	ANSI B16.5 L.W.N.	16.6
D	1	2"	300#	RF/SMOOTH	ANSI B16.5 L.W.N.	16.6

NOZZLE	FORCES (N)			Moments (N.M)		
	Fx	Fy	Fz	Mx	My	Mz
N1	12000	15090	15090	6420	9150	4890
N2	12000	15090	15090	6420	9150	4890

Fire proofing operation is performed for all beams, columns
Use Ø20mm steel bar welded to structural steel shapes length 50mm.



VENDOR LOGO: AAC Project No: 17208

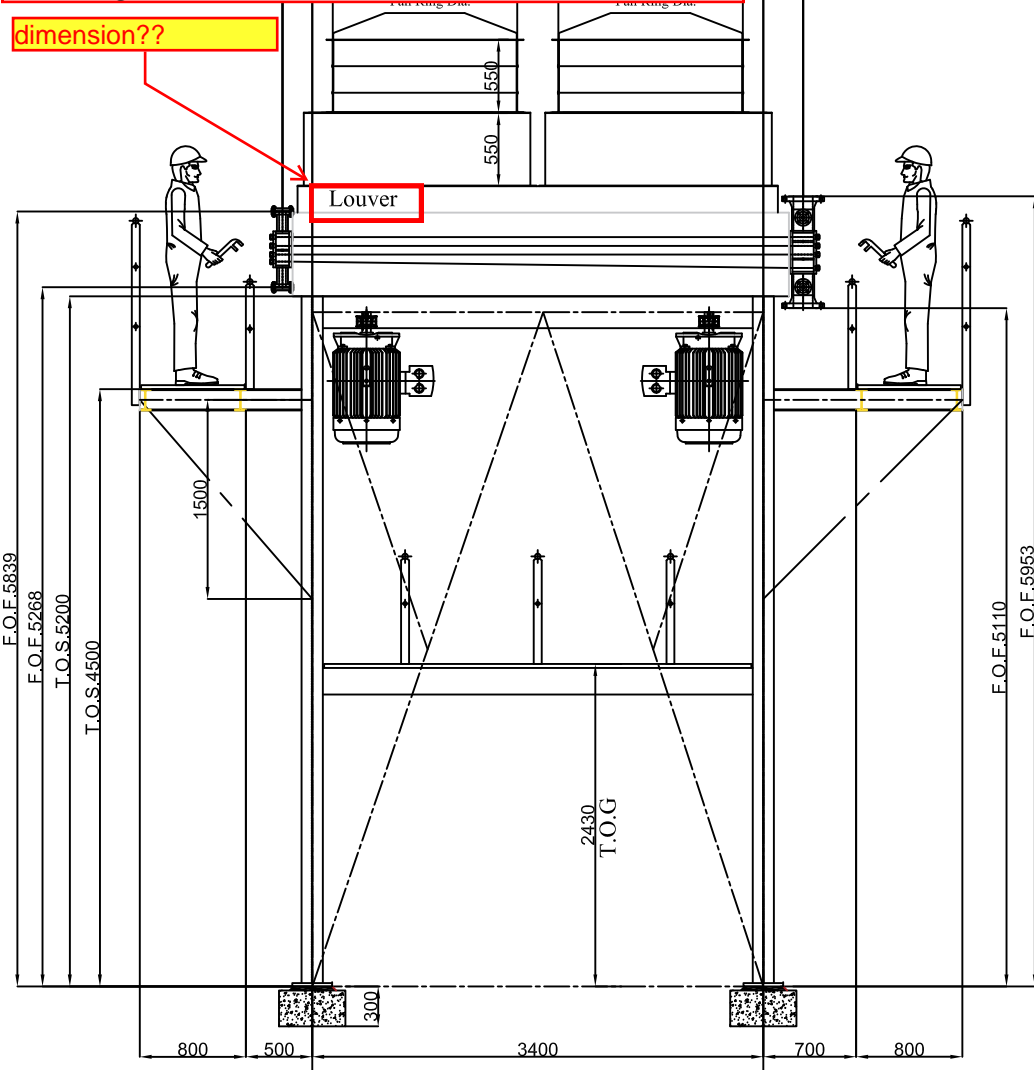


REV.	DATE	P.O.I.S	PREP.	CHK.	APP.	AUT.	DESCRIPTION	BY	DATE	BY	DATE
VO2	AUG.24	IFI	AC	M.PAKHABAN	M.SABERHAN	** **					
VO1	APR.24	IFI	AC	M.PAKHABAN	S.PARHAMPOUR	** **					
VO0	FEB.24	IFI	AC	M.PAKHABAN	S.PARHAMPOUR	** **					

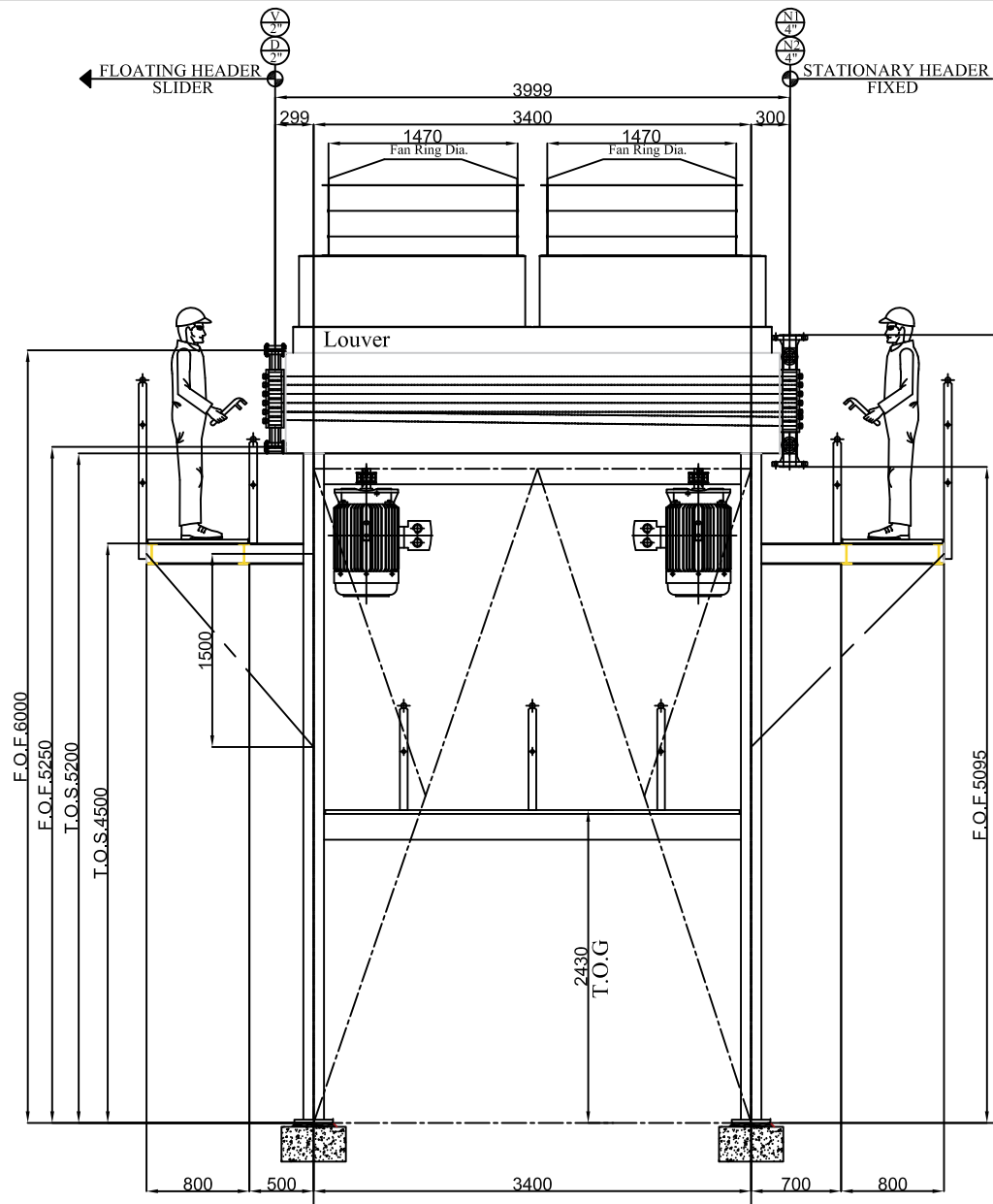
PROJECT NAME: BINAK OILFIELD DEVELOPMENT/SURFACE FACILITIES
PROJECT NO.: 971080
EPC CONTRACTOR: HIRGAN ENERGY - DESIGN & INSPECTION COMPANIES
EPD/EPC CONTRACTOR (GC): PETROIRAN DEVELOPMENT COMPANY
DRAWING TITLE: General Arrangement Drawing AE-2101-A/B/C, AE-2102-A/B/C
SCALE: AS
DRAWING NO.: BK-GCS-AA-120-ME-DW-0001
SHEET NO.: 1 OF 2
REV.: VO2

AAC Reply:
All dimensions will be given on the Louver Drawing.

dimension??



VIEW "C- C"

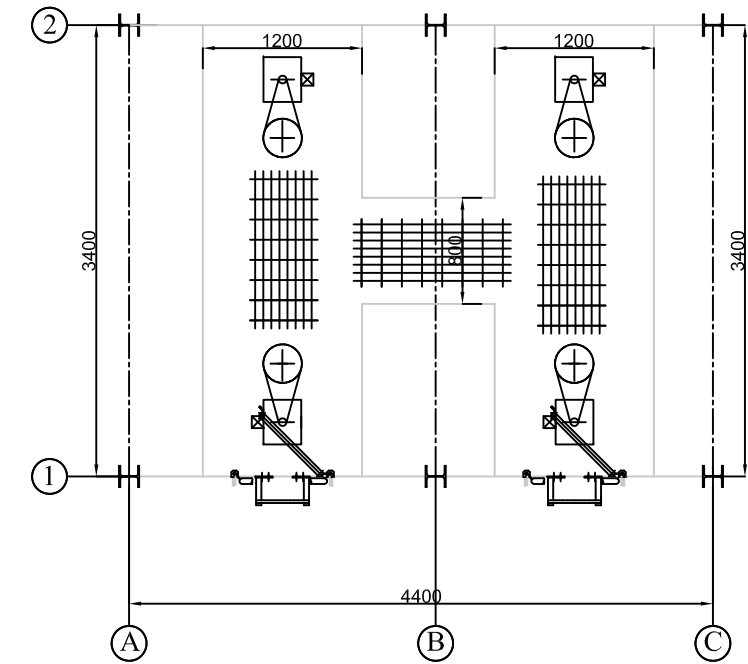


VIEW "D- D"

NOTES :

- ALL DIMENSIONS AND COORDINATES ARE IN MILLIMETER.
- ALL ELEVATIONS ARE IN MILLIMETER.
- DESIGNED PER API-661 SEVENTH ED. 2013 AND ASME Sec. VIII, Div. 1, Ed. 2017. OVERALL TOLERANCES PER API-661, FIG.10 AND APPLICABLE SPECIFICATION.
- Surface Preparation and Painting Procedure (w/ Paint Datasheet): BK-GCS-AA-120-QC-PR-0004
- BUNDLE ARE FITTED WITH SLIDING PAD AND INLET HEADERS ARE FIXED IN FINETUBE DIRECTION.
- MECHANICAL EQUIPMENT : FAN-MANUALLY ADJUSTABLE BLADE PITCH (AP) 50%
AUTO VARIABLE ADJUSTABLE PITCH (AVP) 50%
SPEED REDUCER V-Belts
- FAN BLADE ANGLES: ACCORDING TO FAN DATA SHEET: BK-GCS-AA-120-ME-DS-0001
- TRANSPORTATION BOLTS SHALL BE REMOVED AFTER INSTALLATION.
SEE Side Frame Drawing: BK-GCS-AA-120-ME-DW-0003
- ABBREVIATIONS: T.O.S.: Top Of Steel B.O.B.P.L.: Bottom of Base Plate
T.O.G.: Top Of Grating F.O.F.: Face Of Flange
B.O.P.: Bottom of Pedestal

REFERENCE DOCUMENT	DOCUMENT No.
Process Data Sheet for AE-2101 (A/B/C)	BK-GCS-AA-120-PR-DS-0001
Process Data Sheet for AE-2102 (A/B/C)	BK-GCS-AA-120-PR-DS-0002
Fan Data Sheets	BK-GCS-AA-120-ME-DS-0001
Steel Structure Calculation Books	BK-GCS-AA-120-ST-CN-0001
Tube Bundle Drawing	BK-GCS-AA-120-ME-DW-0002
Side Frame Drawing	BK-GCS-AA-120-ME-DW-0003
Fan & Motor Support Drawing	BK-GCS-AA-120-ME-DW-0010
Plenum fan Ring Drawing	BK-GCS-AA-120-ME-DW-0006
Fan & Pulley Guard Drawing	BK-GCS-AA-120-ME-DW-0004
Shaft Housing Drawing	BK-GCS-AA-120-ME-DW-0008
Steel Structure Drawing	BK-GCS-AA-120-ST-DW-0001



MOTOR WALKWAY
At Elev. +2200

GENERAL DATA		
DRAFT TYPE :	INDUCED	INDUCED
NUMBER OF BAY/UNIT	1	1
NUMBER OF BUNDLE / BAY	1	1
STRUTURAL MOUNTING	GROUND	GROUND
DESIGN PRESSURE	22 (Barg)	62 (Barg)
TEST PRESSURE	28.60 (Barg)	80.60 (Barg)
DESIGN TEMPRATURE	155 °C	175 °C
FLUID NAME	Hydrocarbon	Hydrocarbon
TEMPERATURE IN / OUT	129 / 60 °C	148 / 60 °C
FOUILLING RESIST.	0.0002(m2-k/w)	0.0002(m2-k/w)
MATERIAL OF TUBE	SA-213 TP316L	SA-213 TP316L
OUTSIDE DIAMETER OF TUBE	25.4 mm	25.4 mm
MIN THK. OF TUBE	1.651 mm	1.651 mm
TUBE TO TUBESHEET JOINT TYPE	Expanded + Strength weld	Expanded + Strength weld
NUMBER OF TUBES / BUNDLE	104	156
TYPE OF FIN	EXTRUDED	EXTRUDED
MATERIAL OF FIN	ALUMINUM ALLOY 1060-O	ALUMINUM ALLOY 1060-O
OUTSIDE DIAMETER OF FIN	57.15 mm	57.15 mm
STOCK THIK.	0.48 mm	0.48 mm
FPM	433.1	433.1
BARE / FINNED SURFACE PER UNIT	31.536 / 721.45 m2	48.548 / 1106.8 m2
TYPE OF HEADER	PLUG	PLUG
MATERIAL OF HEADER	SA-240 TP316L	SA-240 TP316L
GASKET MATERIAL	Solid Metal	Solid Metal
CORROSION ALLOWANCE	0	0
FAN SPECIFICATION: RPM / DIAMETER	696/1372 mm	658.6/1450 mm
FAN ABSORBED POWER	3.4 (Kw)	4.8 (Kw)
NUMBER OF BLADE/BLADE MATERIAL	4 / AL	5 / AL
AIR QUANTITY / FAN	12.09 m3/s	14.734 m3/s
STATIC PRESSURE	152.81 Pa	173.1 Pa
AIR TEMPERATURE IN/OUT	50.26 / 65.72 °C	50.26 / 69.32 °C
S. P. L. @ 1 m BESIDE FAN :	< 85 [dB(A)]	
ELECTRIC MOTOR	EExd, IIB T3 (IP 55)	
VOLTS / CYCLES / PHASE	400-50-3	
RPM / MOTOR POWER (Kw)	1500/5.5	
SPEED REDUCER TYPE	V-BELT	
REDUCTION RATIO	2.16	
STEAM COIL	NO	
LOUVER	Yes, (Manual)	
VIBRATION SWITCH/NUMBER PER BAY	Yes, EExd, IIB T3 (IP 65) / 2	Yes, EExd, IIB T3 (IP 65) / 2
FIREPROOFING	YES	YES

DESIGN DATA TABLE			
WIND DATA		SEISMIC DATA	
CODE	ASCE7-10	CODE	ACSE7-10
WIND SPEED	34 m/s	ZONE/SOIL TYPE	D
EXPOSURE	C	SDs/SD1/R/Ss/S	0.83/0.58/3.25/1.25/0.58
IMPORTANCE FACTOR	1	IMPORTANCE FACTOR	1.25
WEIGHT(KG)			
		AE-2101	AE-2102
SIDE FRAME+BUNDLE(DRY) /BAY		1844	2662
SIDE FRAME+BUNDLE(OPERATION) /BAY		1849	3099
SIDE FRAME+BUNDLE(HYDRO TEST) /BAY		2124	3107
PLENUM+FAN RING /BAY		900	900
FAN+FAN GUARD /BAY		400	400
		300	300
MOTOR+MOTOR SUPPORT /BAY		1000	1000
SHAFT HOUSING		300	300
TOTAL EQUIPMENT WEIGHT PER BAY(KG)			
		AE-2101	AE-2102
WEIGHT(FABRICATED)		4,744	5562
WEIGHT(OPERATING)		4,749	5,999
WEIGHT(HYDROTEST)		5,024	6,007
TOTAL WEIGHT(OPERATING)		21,098	
TOTAL WEIGHT(HYDROTEST)		21,331	

AAC Reply:
Please kindly note that as per TCL, IIB gas group is announced by client and would be considered by AAC.

gas group shall be considered "IIC"

TOTALLY REVISED



REV.	DATE	P.O.I.S	PREP.	CHK.	APP.	AUT.	DESCRIPTION	BY	DATE	BY	DATE
V02	AUG.24	IFI	AC	M.PARHARIAN	M.SAMERHAN	** **					
V01	APR.24	IFI	AC	M.PARHARIAN	S.PARHARIAN	** **					
V00	FEB.24	IFI	AC	M.PARHARIAN	S.PARHARIAN	** **					

PROJECT NAME: BINAK OILFIELD DEVELOPMENT/SURFACE FACILITIES GAS & GAS-CONDENSATE PIPELINES
PROJECT NO.: 971020
EPC CONTRACTOR: HIRGAN ENERGY - DESIGN & INSPECTION COMPANIES
EPD/EPC CONTRACTOR (GC): PETROIRAN DEVELOPMENT COMPANY
DATE: _____ **SCALE:** _____ **DRAWING BY:** _____ **CHECKED BY:** _____ **PROJECT ENG.:** _____
DRAWING TITLE: General Arrangement Drawing AE-2101-A/B/C , AE-2102-A/B/C
NO CONSTRUCTION PERMITTED UNLESS DRAWING APPROVED
APPROVED FOR CONSTRUCTION: _____ **BY:** _____ **DATE:** _____
SCALE: AS **SIZE:** A3 **DRAWING NO.:** BK-GCS-AA-120-ME-DW-0001 **SHEET NO.:** 1 OF 2 **REV.:** V02