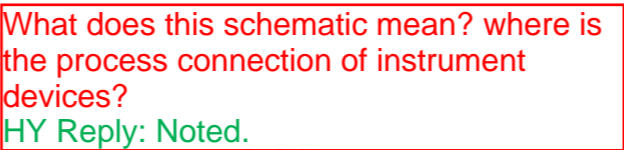


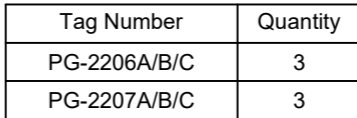
Instrument Comments:

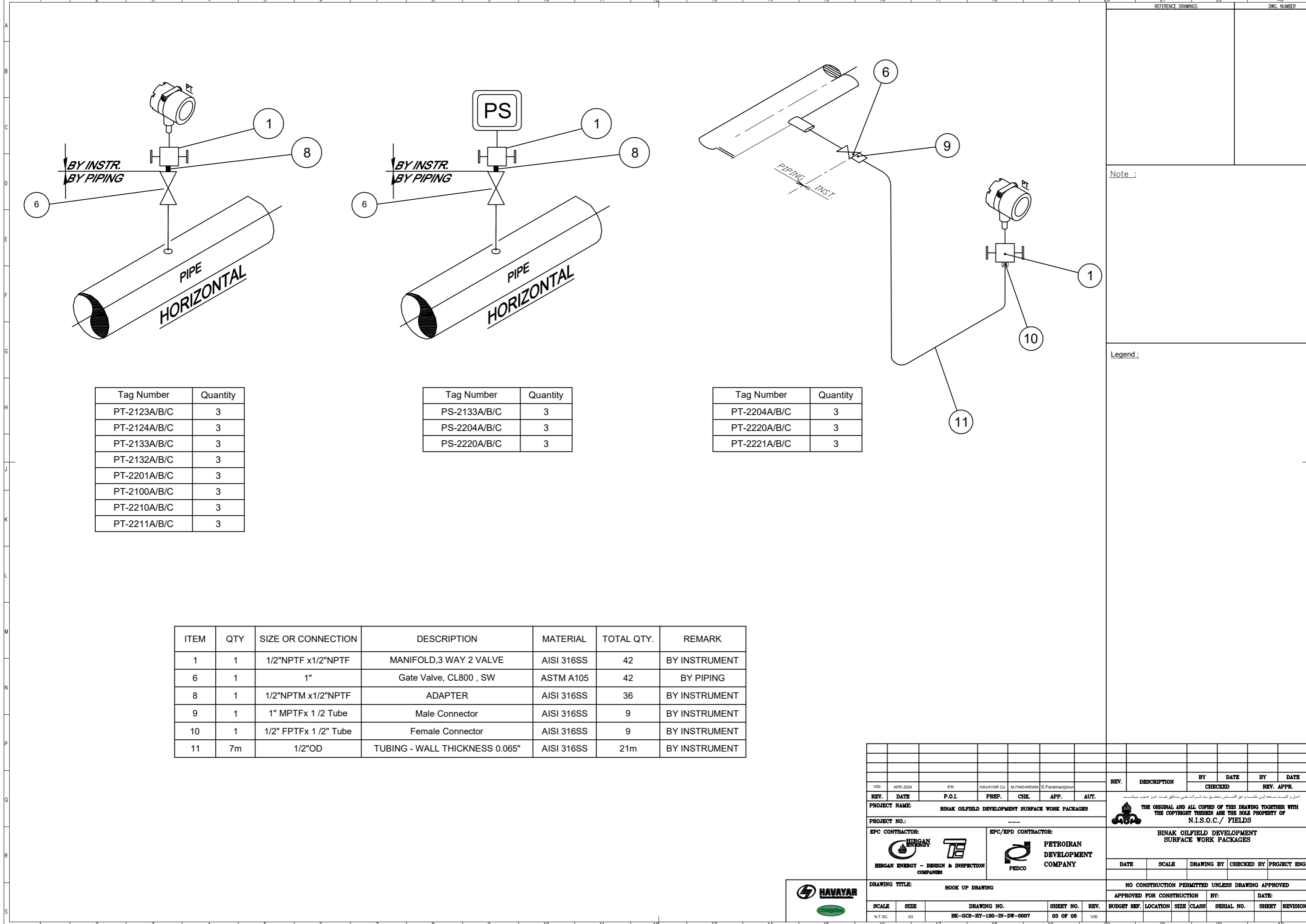
- Bill of Material shall be considered as a table.
HY Reply: Noted.
- Reference Document with latest revision shall be specified.
HY Reply: Noted.
- Hook-up for all filed instruments like valves shall be considered.
HY Reply: Noted.
- Pressure instrument hook-up for gas and liquids shall be specified.
HY Reply: Noted.
- Tag and instrument quantities shall be compatible with Datasheet.
HY Reply: Noted.
- Nace Items shall be counted as separate code.
HY Reply: Noted.
- Quantities in table and tag numbers are not Compatible, Recheck?
HY Reply: Noted.
- Gauge glass hook-up to specify?
HY Reply: Noted.
- VE, ZE,ZT, TE , hook-up to be specified.
HY Reply: Noted.



Tag Number	Quantity
PG-2200A/B/C	3
PG-2202A/B/C	3
PG-2201A/B/C	3
PG-2204A/B/C	3
PG-2205A/B/C	3
PG-2208A/B/C	3

	TOTAL QTY.
	36
	12
	12
	24
	12
	12
	6
	9








Tag Number	Quantity
PT-2123A/B/C	3
PT-2124A/B/C	3
PT-2133A/B/C	3
PT-2132A/B/C	3
PT-2201A/B/C	3
PT-2100A/B/C	3
PT-2210A/B/C	3
PT-2211A/B/C	3

Tag Number	Quantity
PS-2133A/B/C	3
PS-2204A/B/C	3
PS-2220A/B/C	3

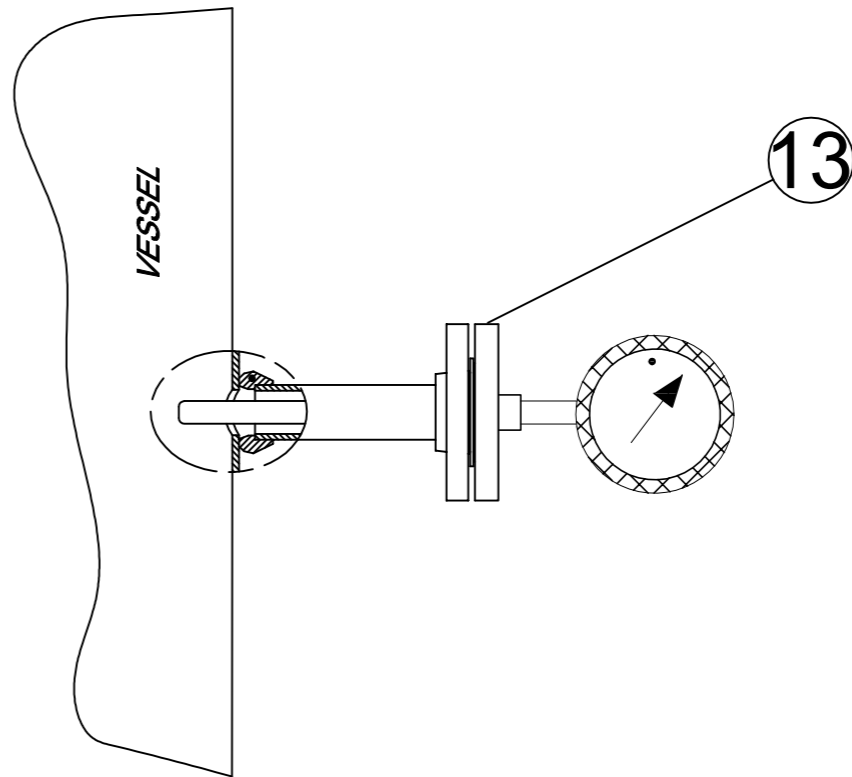
Tag Number	Quantity
PT-2204A/B/C	3
PT-2220A/B/C	3
PT-2221A/B/C	3

ITEM	QTY	SIZE OR CONNECTION	DESCRIPTION	MATERIAL	TOTAL QTY.	REMARK
1	1	1/2"NPTF x1/2"NPTF	MANIFOLD,3 WAY 2 VALVE	AISI 316SS	42	BY INSTRUMENT
6	1	1"	Gate Valve, CL800 , SW	ASTM A105	42	BY PIPING
8	1	1/2"NPTM x1/2"NPTF	ADAPTER	AISI 316SS	36	BY INSTRUMENT
9	1	1" MPTFx 1 /2 Tube	Male Connector	AISI 316SS	9	BY INSTRUMENT
10	1	1/2" FPTFx 1 /2" Tube	Female Connector	AISI 316SS	9	BY INSTRUMENT
11	7m	1/2"OD	TUBING - WALL THICKNESS 0.065"	AISI 316SS	21m	BY INSTRUMENT



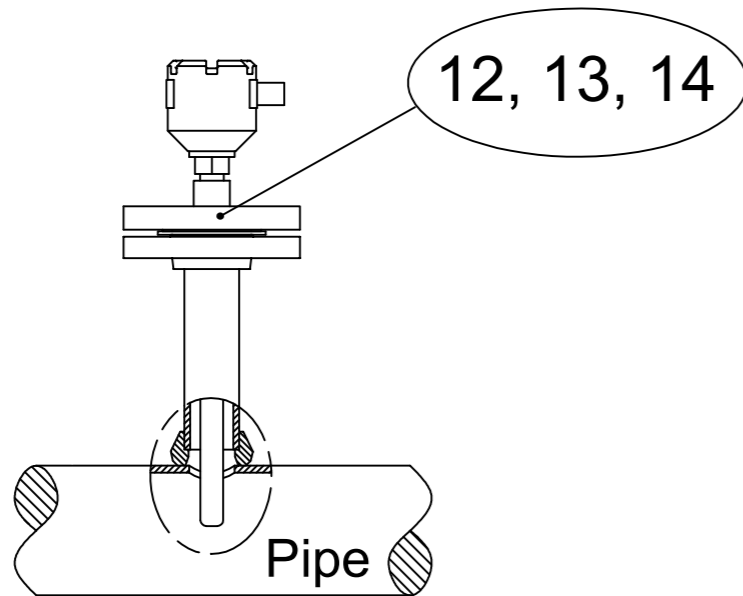
V00	APR.2024	IFR	HAVAYAR Co	M.FAKHARIAN	S.Faramarzpour	
REV.	DATE	P.O.I.	PREP.	CHK.	APP.	AUT.
PROJECT NAME: BINAK OILFIELD DEVELOPMENT SURFACE WORK PACKAGES						
PROJECT NO.: ---						
EPC CONTRACTOR: <div> HIRCAN ENERGY – DESIGN & INSPECTION COMPANIES</div>			EPC/EPD CONTRACTOR: <div> PETROIRAN DEVELOPMENT COMPANY</div>			
DRAWING TITLE: HOOK UP DRAWING						
SCALE	SIZE	DRAWING NO.			SHEET NO.	REV.
N.T.S.C.	A3	BK-GCS-HY-120-IN-DW-0007			03 OF 08	V00

THE ORIGINAL AND ALL COPIES OF THIS DRAWING TOGETHER WITH THE COPYRIGHT THEREIN ARE THE SOLE PROPERTY OF N.I.S.O.C./ FIELDS						
DATE	SCALE	DRAWING BY	CHECKED BY	PROJECT ENG.		
NO CONSTRUCTION PERMITTED UNLESS DRAWING APPROVED						
APPROVED FOR CONSTRUCTION			BY:	DATE:		
BUDGET REF.	LOCATION	SIZE	CLASS	SERIAL NO.	SHEET	REVISION
				22		

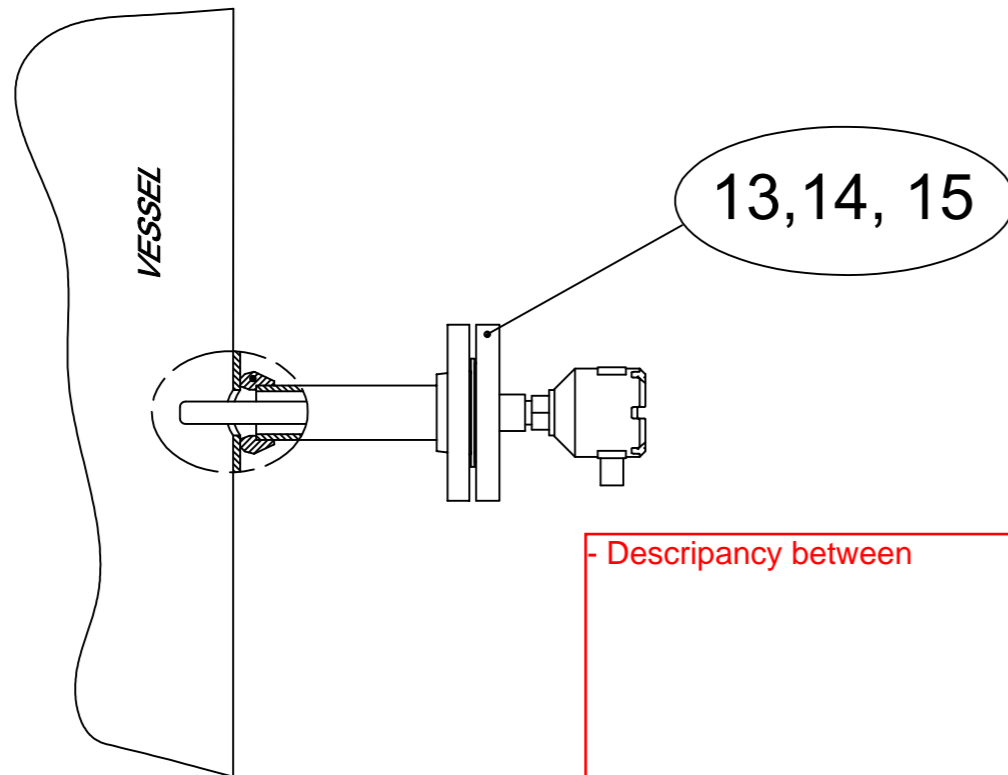


Tag Number	Quantity	U Length(m)
TG-2190A/B/C	3	400
TG-2193A/B/C	3	400
TG-2217A/B/C	3	400

[illegible]



Tag Number	Quantity	U Length(m)
TT-2194A/B/C	3	400
TT-2204A/B/C	3	150
TT-2203A/B/C	3	200
TT-2213A/B/C	3	Hold
TT-2214A/B/C	3	N/A
TT-2215A/B/C	3	N/A
TT-2216A/B/C	3	N/A
TT-2217A/B/C	3	N/A
TT-2218A/B/C	3	N/A
TT-2219A/B/C	3	N/A
TT-2220A/B/C	3	N/A
TT-2191A/B/C	3	400



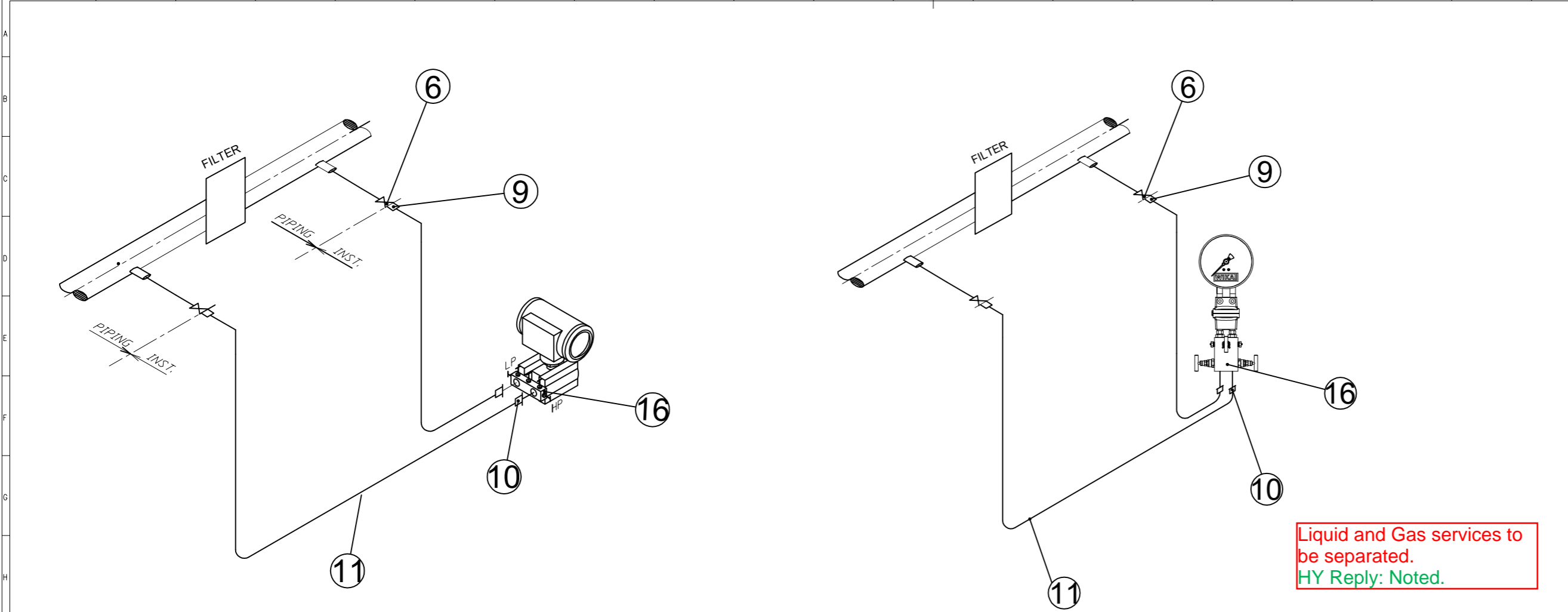
Tag Number	Quantity	U Length(m)
TT-2122A/B/C	3	250
TT-2123A/B/C	3	250
TT-2132A/B/C	3	200
TT-2133A/B/C	3	200

Tag Number	Quantity	U Length(m)
TS-2191A/B/C	3	400
TT-2194A/B/C	3	400

- Discrepancy between

ITEM	QTY	SIZE OR CONNECTION	DESCRIPTION	MATERIAL	TOTAL QTY.	REMARK
12	1	1/2"NPTF x1/2"NPTF	THERMOWELL - #300 - CON:1/2 NPT - U: 150 mm	AISI 316SS	3	BY INSTRUMENT
13	1	1/2"NPTF x1/2"NPTF	THERMOWELL - #300 - CON:1/2 NPT - U: 400 mm	AISI 316SS	12	BY INSTRUMENT
14	1	1/2"NPTF x1/2"NPTF	THERMOWELL - #300 - CON:1/2 NPT - U: 200 mm	AISI 316SS	9	BY INSTRUMENT
15	1	1/2"NPTF x1/2"NPTF	THERMOWELL - #300 - CON:1/2 NPT - U: 200 mm	AISI 316SS	6	BY INSTRUMENT

[illegible]



Tag Number	Quantity
PDT-2122A/B/C	3
PDT-2132A/B/C	3
PDT-2204A/B/C	3

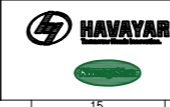
Tag Number	Quantity
PDG-2200A/B/C	3
PDG-2204A/B/C	3
PDG-2205A/B/C	3
PDG-2206A/B/C	3

ITEM	QTY	SIZE OR CONNECTION	DESCRIPTION	MATERIAL	TOTAL QTY.	REMARK
16	1	1/2"NPTF x1/2"NPTF	MANIFOLD,5 WAY 3VALVE	AISI 316SS	21	BY INSTRUMENT
6	2	1"	Gate Valve, CL800 , SW	ASTM A105	42	BY PIPING
9	2	1" MPTFx 1 /2 Tube	Male Connector	AISI 316SS	42	BY INSTRUMENT
10	2	1/2" FPTFx 1 /2" Tube	Female Connector	AISI 316SS	42	BY INSTRUMENT
11	7m	1/2"OD	TUBING - WALL THICKNESS 0.065"	AISI 316SS	49	BY INSTRUMENT

Liquid and Gas services to be separated.
HY Reply: Noted.

Note :

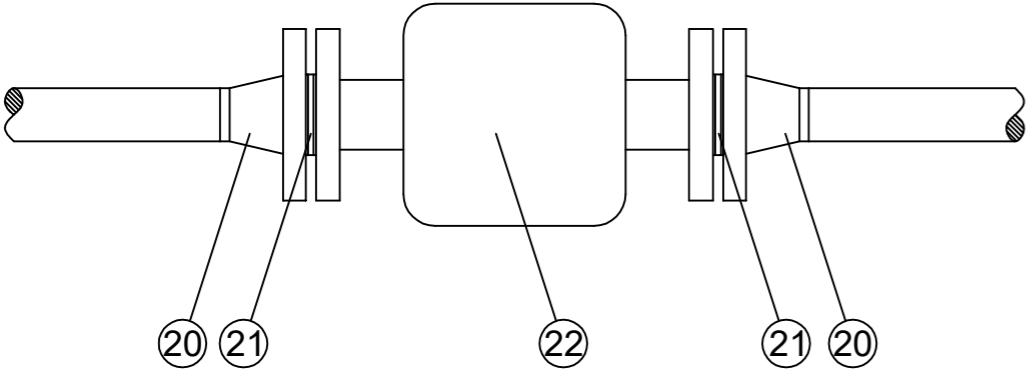
Legend :



REV.	DESCRIPTION	BY	DATE	BY	DATE
V00	APR.2024	IFR	HAVAYAR Co	M.FAKHARIAN	S.Faramarzpour
REV.	DATE	P.O.I.	PREP.	CHK.	APP.
PROJECT NAME: BINAK OILFIELD DEVELOPMENT SURFACE WORK PACKAGES					
PROJECT NO.: ---					
EPC CONTRACTOR: HIRGAN ENERGY - DESIGN & INSPECTION COMPANIES			EPC/EPD CONTRACTOR: PETROIRAN DEVELOPMENT COMPANY		
DRAWING TITLE: HOOK UP DRAWING					
SCALE	SIZE	DRAWING NO.		SHEET NO.	REV.
N.T.S.C.	A3	BK-GCS-HY-120-IN-DW-0007		06 OF 08	V00

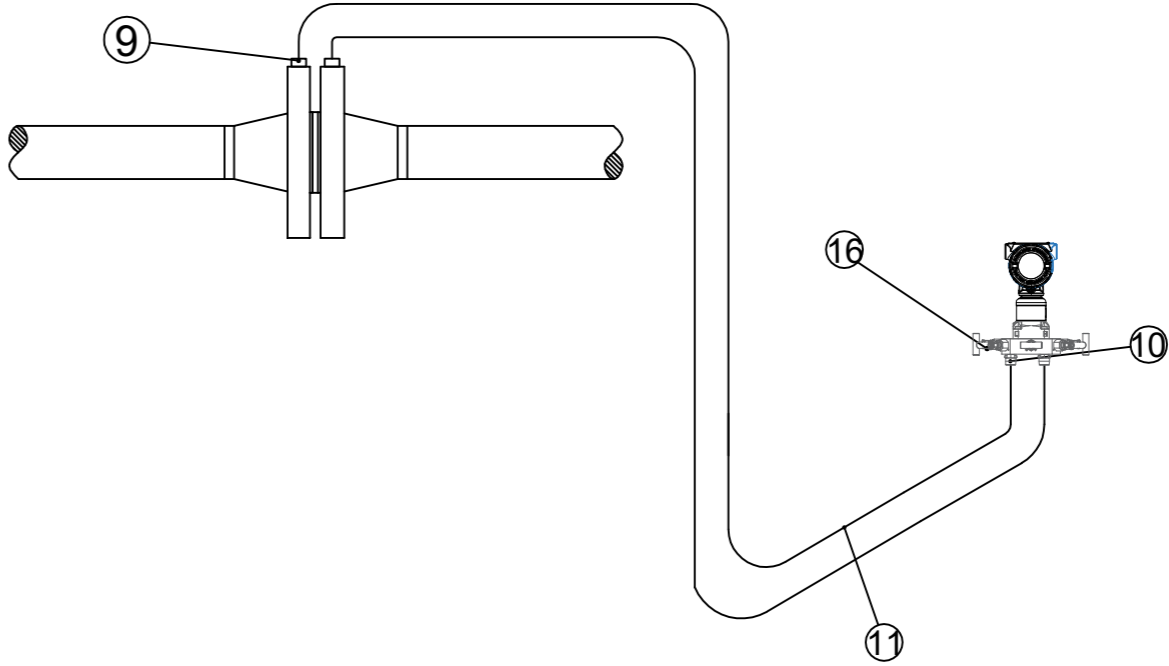
THE ORIGINAL AND ALL COPIES OF THIS DRAWING TOGETHER WITH THE COPYRIGHT THEREIN ARE THE SOLE PROPERTY OF N.I.S.O.C./ FIELDS					
DATE	SCALE	DRAWING BY	CHECKED BY	PROJECT ENG.	
NO CONSTRUCTION PERMITTED UNLESS DRAWING APPROVED					
APPROVED FOR CONSTRUCTION			BY:	DATE:	
BUDGET REF.	LOCATION	SIZE	CLASS	SERIAL NO.	SHEET
				22	REVISION

Description of each schematic shall be shown.
HY Reply: Noted.



Tag Number	Quantity
FI-2200A/B/C	3
FI-2201A/B/C	3
FI-2202A/B/C	3
FI-2203A/B/C	3

ITEM	QTY	SIZE OR CONNECTION	DESCRIPTION	MATERIAL	TOTAL QTY.	REMARK
20	2	1/2"	W.N. FLANGE - #150	AISI 316SS	8	BY PIPING
21	2	1/2"	GASKET - SPIRAL WOUND - #150	ASTM A105	4	BY PIPING
22	2	1/2"	FLOW INDICATOR - FLG - #150	AISI 316SS	4	BY PIPING



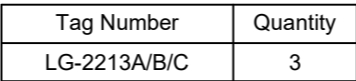
Tag Number	Quantity
FT-2121A/B/C	3
FT-2131A/B/C	3
FT-2206A/B/C	3




ITEM	QTY	SIZE OR CONNECTION	DESCRIPTION	MATERIAL	TOTAL QTY.	REMARK
9	2	1" MPTF x 1/2 Tube	Male Connector	AISI 316SS	6	BY INSTRUMENT
10	2	1/2" FPTF x 1/2" Tube	Female Connector	AISI 316SS	6	BY INSTRUMENT
11	2x7 m	1/2"OD	TUBING - WALL THICKNESS 0.065"	AISI 316SS	42	BY INSTRUMENT
16	1	1/2"NPTF x1/2"NPTF	MANIFOLD,5 WAY 3VALVE	AISI 316SS	3	BY INSTRUMENT


[illegible]



ITEM	QTY	SIZE OR CONNECTION	DESCRIPTION	MATERIAL	TOTAL QTY.	REMARK
9	1	1" MP TFx 1/2 Tube	Male Connector	AISI 316SS	6	BY INSTRUMENT
10	1	1/2" FPF TFx 1/2" Tube	Female Connector	AISI 316SS	6	BY INSTRUMENT
11	7 m	1/2"OD	TUBING - WALL THICKNESS 0.065"	AISI 316SS	42	BY INSTRUMENT
16	1	1/2"NPTF x1/2"NPTF	MANIFOLD,5 WAY 3VALVE	AISI 316SS	6	BY INSTRUMENT



V00	APR.2004	IFR	HAVAYAR Co	M.FAKHARIAN	S.Faramarzpour		
REV.	DATE	P.O.I.	PREP.	CHK.	APP.	AUT.	
PROJECT NAME: BIRAK OILFIELD DEVELOPMENT SURFACE WORK PACKAGES							
PROJECT NO.: --- --							
EPC CONTRACTOR:			EPC/EPD CONTRACTOR:				
  HIRGAN ENERGY - DESIGN & INSPECTION COMPANIES			 PETROIRAN DEVELOPMENT COMPANY				
DRAWING TITLE: HOOK UP DRAWING							
SCALE	SIZE	DRAWING NO.				SHEET NO.	REV.
N.T.SC.	A3	BK-GCS-HY-120-IN-DW-0007				06 OF 06	V00

REFERENCE DRAWINGS				DWG. NUMBER			
<p><u>Note :</u></p> 							
<p><u>Legend :</u></p> 							
 <p>THE ORIGINAL AND ALL COPIES OF THIS DRAWING TOGETHER WITH THE COPYRIGHT THEREIN ARE THE SOLE PROPERTY OF N.I.S.O.C./ FIELDS</p>							
<p>BINAK OILFIELD DEVELOPMENT SURFACE WORK PACKAGES</p>							
DATE	SCALE	DRAWING BY	CHECKED BY	PROJECT ENG.			
NO CONSTRUCTION PERMITTED UNLESS DRAWING APPROVED							
APPROVED FOR CONSTRUCTION				BY:		DATE:	
BUDGET REF.	LOCATION	SIZE	CLASS	SERIAL NO.	SHEET	REVISION	
0	21	22	A0				
Software Autodesk File No. Drawing Sheet							