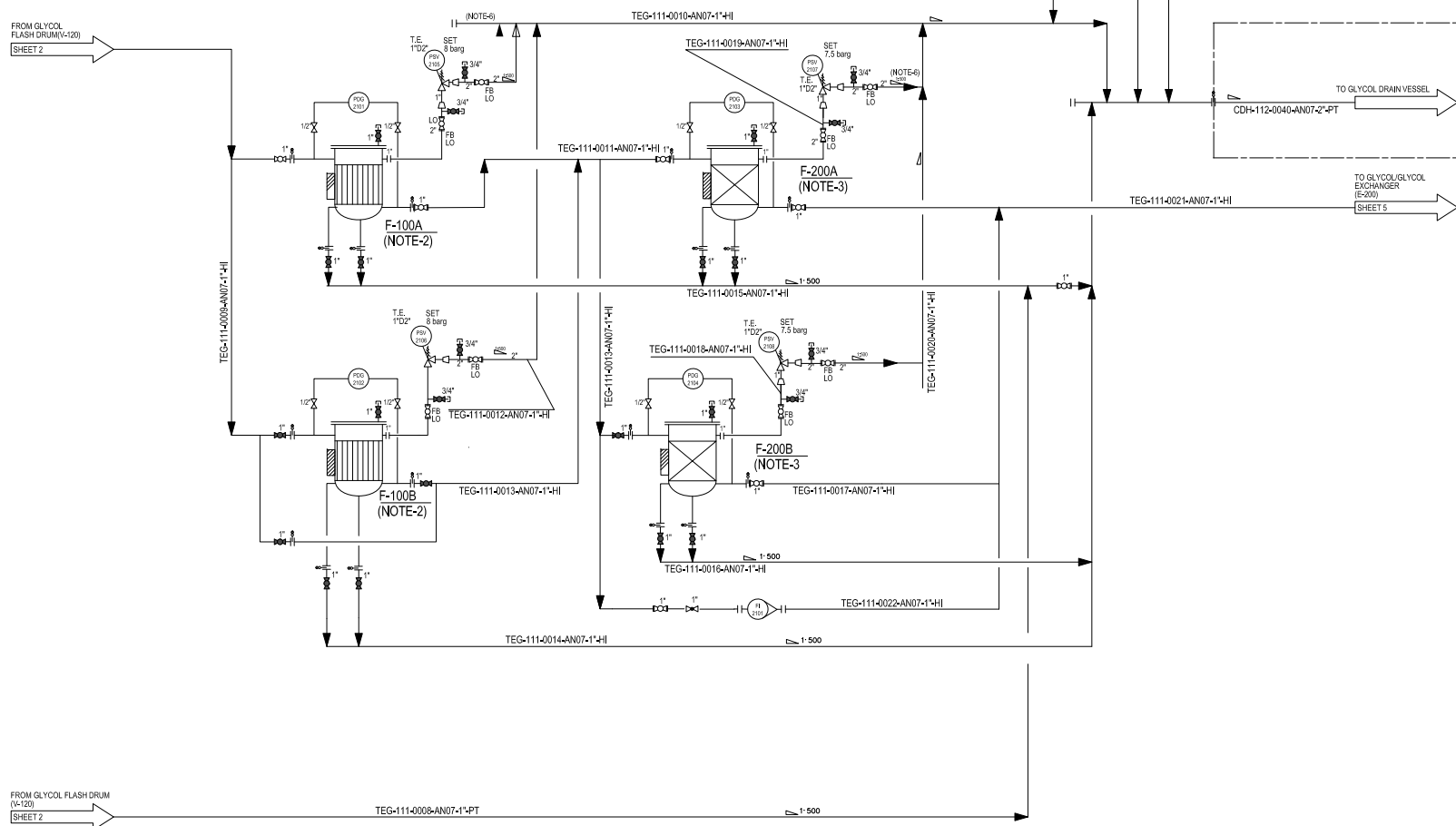


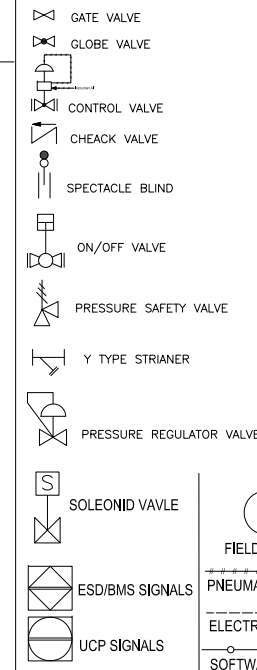
FROM GLYCOL
FLASH DRUM(V-120)
SHEET 2

FROM GLYCOL FLASH DRUM
(V-120)

SHEET 2

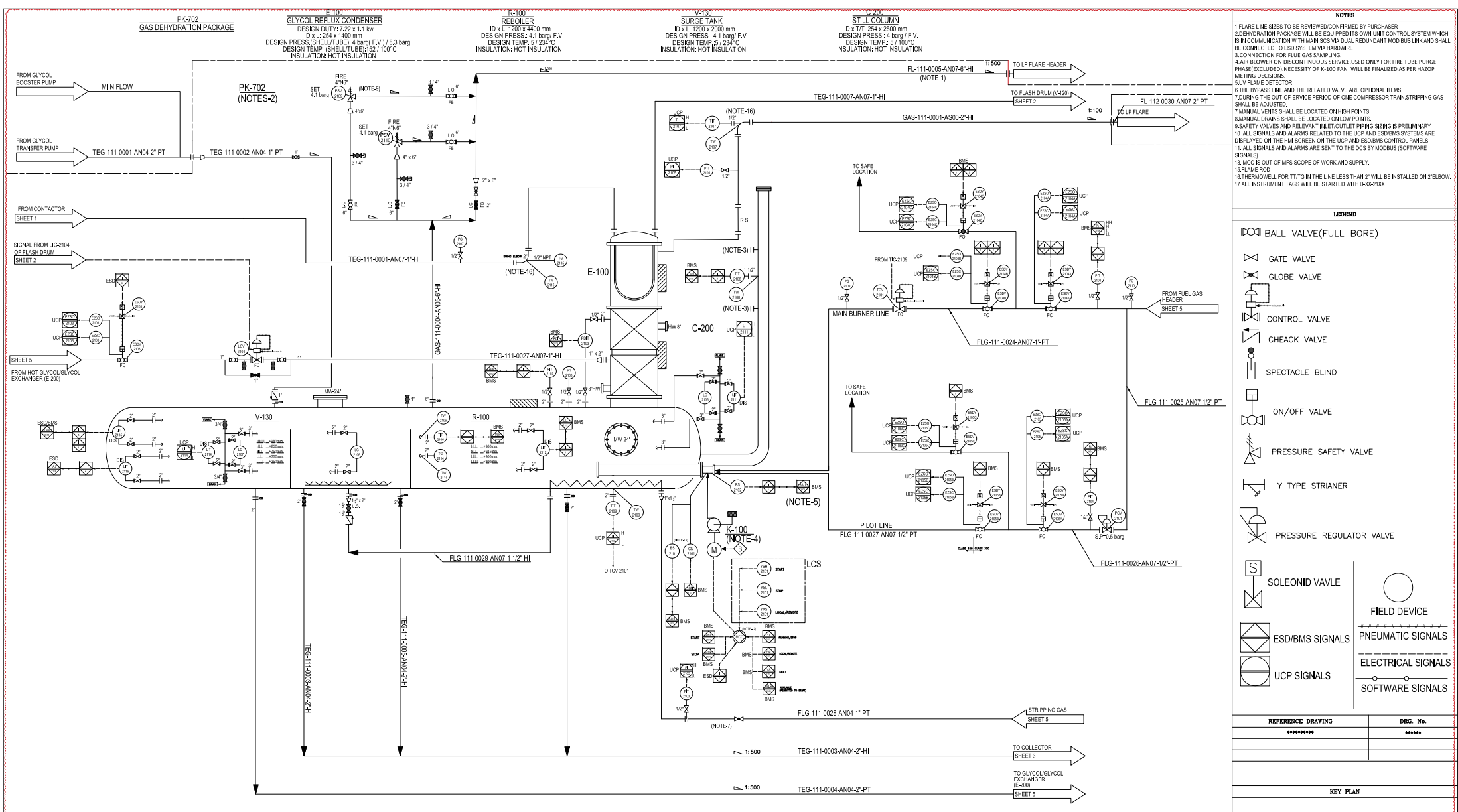
1. DEHYDRATION PUMP WILL BE EQUIPPED ITS OWN UNIT CONTROL SYSTEM WHICH IS IN COMMUNICATION WITH MAIN SCADA VIA DUAL REDUNDANT MOD BUS LINE AND SHALL BE CONNECTED TO ESD SYSTEM VIA HARDWARE.
2. EACH PARTICLE FILTER IS SIZED FOR A MINIMUM OF 20% OF THE TOTAL FLOW RATE, WITH EACH PARTICLE FILTER SERVING AS A SPARE.
3. EACH CARBON FILTER IS SIZED FOR A MINIMUM OF 20% OF THE TOTAL FLOW RATE, WITH ONE FILTER SERVING AS A SPARE. THE REMAINING RICH GLYCOL WILL FLOW THROUGH THE BYPASS LINE.
4. MANUAL DRAINS SHALL BE LOCATED ON LOW POINTS.
5. MANUAL DRAINS SHALL BE LOCATED ON LOW POINTS.
6. SAFETY VALVES AND RELEVANT INLET/OUTLET PIPING SIGNALS ARE PRELIMINARY.
7. ALL SIGNALS AND ALARMS RELATED TO THE UCP AND ESDMS SYSTEMS ARE DISPLAYED ON THE HMI SCREEN ON THE UCP AND ESDMS CONTROL PANELS.
8. ALL SIGNALS AND ALARMS ARE LOGGED IN THE LOGGING SOFTWARE (SIGNALS).
9. ALL INSTRUMENT TAGS WILL BE STARTED WITH D-XXXX-XXXX.

|||| BALL VALVE(FULL BORE)



REFERENCE DRAWING	DRG. No.
*****	*****
KEY PLAN	

[illegible]



LOCAL BURNER PANEL BLP-2101

REBOILER GENERAL SLOWDOWN	RESET	PILOT START	MAIN BURNER START	REBOILER STOP	LAMP TEST	ALARM ACKNOWLEDGE
ALARM RESET	READY TO START	PURGING	PILOT ON	MAIN BURNER ON	MAIN BURNER SLOWDOWN	REBOILER GENERAL SLOWDOWN

LEGEND

BALL VALVE (FULL BORE)

GATE VALVE

GLOBE VALVE

CONTROL VALVE

CHECK VALVE

SPECTACLE BLIND

ON/OFF VALVE

PRESSURE SAFETY VALVE

Y TYPE STRAINER

PRESSURE REGULATOR VALVE

SOLENOID VALVE

FIELD DEVICE

ESD/BMS SIGNALS

UCP SIGNALS

PNEUMATIC SIGNALS

ELECTRICAL SIGNALS

SOFTWARE SIGNALS

REFERENCE DRAWING

REF. NO.	DRG. NO.
*****	*****

KEY PLAN

PROJECT INFORMATION

Y01	FEB 2025	APC	MP	M. KADHAN	SPRINGER	**
Y00	OCT 2024	ISSUED FOR APPROVAL	MP	M. KADHAN	M. KADHAN	**
REV.	DATE	P.O.I.S	PREP.	CHK.	APP.	AUT.

PROJECT NAME: BINAK OILFIELD DEVELOPMENT SURFACE FACILITIES GAS COMPRESSOR STATION

PROJECT NO.: 971030

EPC CONTRACTOR: HURGAN ENERGY - DESIGN & INSPECTION COMPANIES

EPD/EPC CONTRACTOR (GC): PETROIRAN DEVELOPMENT COMPANY

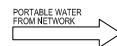
DRAWING TITLE: PIPING & INSTRUMENTATION DIAGRAM FOR GAS DEHYDRATION PACKAGE

APPROVED FOR CONSTRUCTION

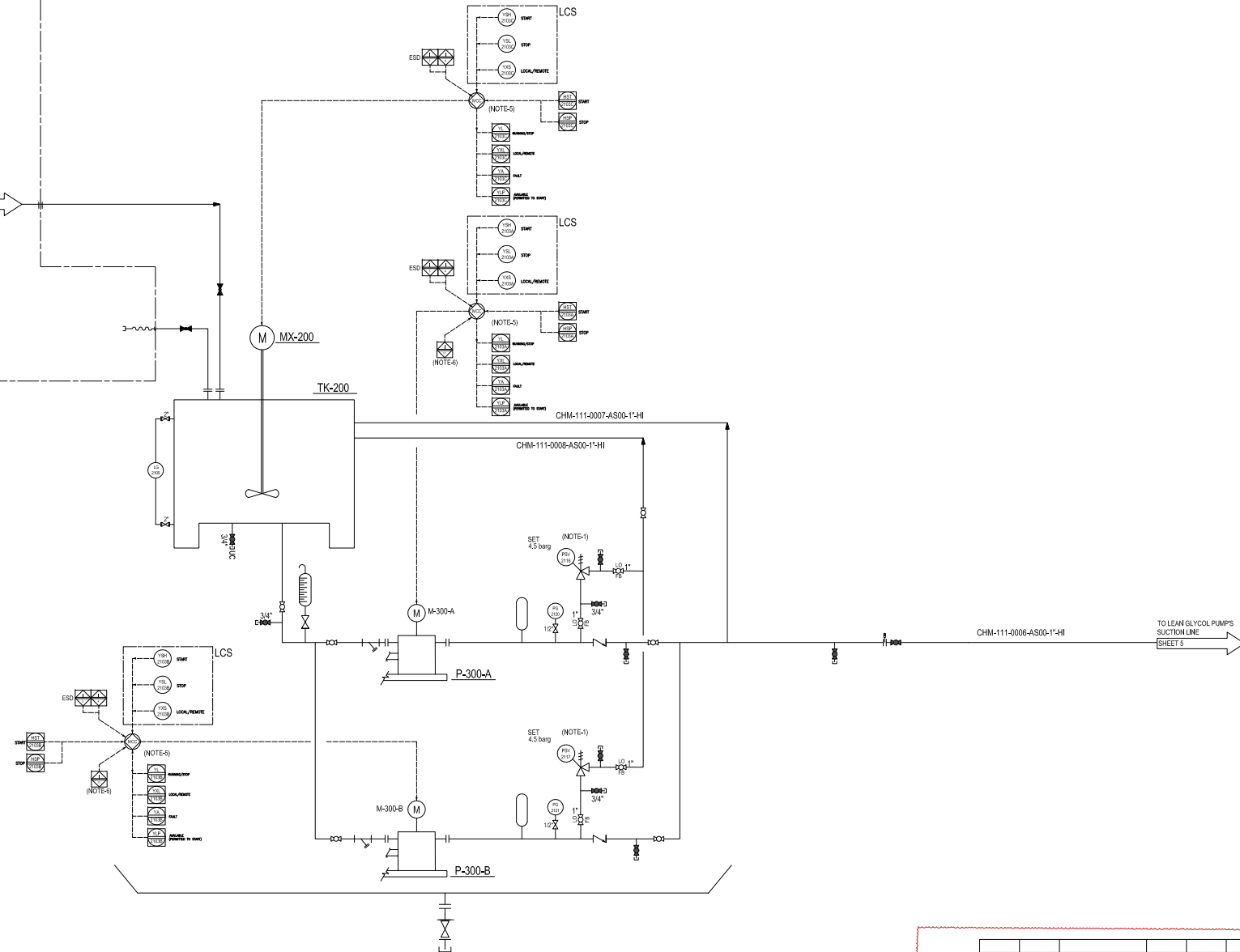
SCALE	SIZE	DRAWING NO.	SHEET NO.	REV.
NTS	A3	BK-GCS-MF-120-PR-FI-0003	4 OF 7	Y01

NOTES

- FLARE LINE SIZES TO BE REVIEWED/CONFIRMED BY PURCHASER.
- DEHYDRATION PACKAGE WILL BE EQUIPPED WITH ITS OWN UNIT CONTROL SYSTEM WHICH IS IN COMMUNICATION WITH MAIN SCSS VIA DUNE. REDUNDANT MOD BUS LINK AND SHALL BE CONNECTED TO ESD SYSTEM VIA HARDWARE.
- CONNECTION FOR FLUE GAS SAMPLING.
- AIR BLOWER ON DISCONTINUOUS SERVICE. USED ONLY FOR FIRE TUBE PURGE PHASE (EXCLUDED). NECESSITY OF K-100 FAN WILL BE FINALIZED AS PER HAZOP MEETING DECISIONS.
- UV FLAME DETECTOR.
- THE BYPASS LINE AND THE RELATED VALVE ARE OPTIONAL ITEMS.
- DURING THE OUT-OF-SERVICE PERIOD OF ONE COMPRESSOR TRAIN, STRIPPING GAS SHALL BE ADJUSTED.
- MANUAL VENTS SHALL BE LOCATED ON HIGH POINTS.
- MANUAL DRAINS SHALL BE LOCATED ON LOW POINTS.
- SAFETY VALVES AND RELEVANT INLET/OUTLET PIPING SIZING IS PRELIMINARY.
- ALL SIGNALS AND ALARMS RELATED TO THE UCP AND ESD/BMS SYSTEMS ARE DISPLAYED ON THE HMI SCREEN ON THE UCP AND ESD/BMS CONTROL PANELS.
- ALL SIGNALS AND ALARMS ARE SENT TO THE DCS BY MODBUS (SOFTWARE SIGNALS).
- MCC IS OUT OF MFS SCOPE OF WORK AND SUPPLY.
- FLAME ROD
- THERMOWELL FOR TT77G IN THE LINE LESS THAN 2" WILL BE INSTALLED ON 2" ELBOW.
- ALL INSTRUMENT TAGS WILL BE STARTED WITH D-XXX-210X.




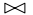






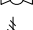

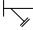

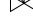



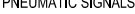
PK-1002
PH CONTROL INJECTION PACKAGE (NOTE-7)



NOTES

1. SAFETY VALVES AND RELEVANT INLETAUT OUT PIPING SIZING IS PRELIMINARY.
2. CHEMICAL DRAIN TO BE GATHERED IN PACKAGE AREA AND SENT TO NON-HOILY WATER SEWER VIA PORTABLE SYSTEM (BY OTHERS).
3. ALL SIGNALS AND ALARMS RELATED TO THE UCP AND ESD/MS SYSTEMS ARE DISPLAYED ON THE MMI SCREEN ON THE UCP AND ESD/MS CONTROL PANELS.
4. ALL SIGNALS AND ALARMS ARE SENT TO THE DCBS BY MODBUS (SOFTWARE SIGNALS).
5. MISC IS OUT OF THE SCOPE OF THIS PROJECT.
6. AUTO START/SELECT ONE OF THE PUMP FOR AUTO START).
7. THIS IS THE PRELIMINARY P&ID FOR INJECTION PACKAGE. THE DETAILED P&ID WILL BE PROVIDED AFTER SELECTING THE PACKAGE SUPPLIER.
8. ALL INSTRUMENT TAGS WILL BE STARTED WITH D-Q-201XX

LEGEND

- | | |
|---|--------------------------|
|  | BALL VALVE(FULL BORE) |
|  | GATE VALVE |
|  | GLOBE VALVE |
|  | CONTROL VALVE |
|  | CHECK VALVE |
|  | SPECTACLE BLIND |
|  | ON/OFF VALVE |
|  | PRESSURE SAFETY VALVE |
|  | Y TYPE STRAINER |
|  | PRESSURE REGULATOR VALVE |
|  | SOLENOID VALVE |
|  | ESD/BMS SIGNALS |
|  | UCP SIGNALS |
|  | FIELD DEVICE |
|  | PNEUMATIC SIGNALS |
|  | ELECTRICAL SIGNALS |
|  | SOFTWARE SIGNALS |

REFERENCE DRAWING	DRG. No.
*****	*****
KEY PLAN	

[illegible]