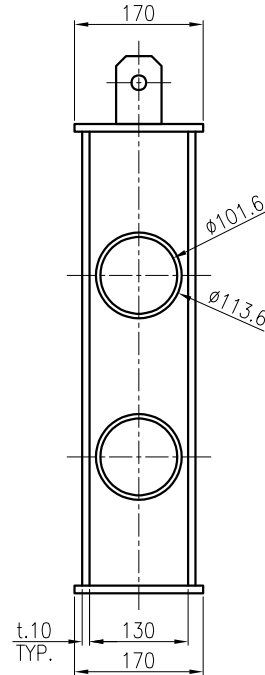
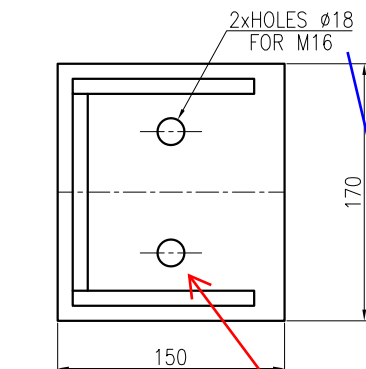


DETAIL OF SADDLE
FOR E-200A&C

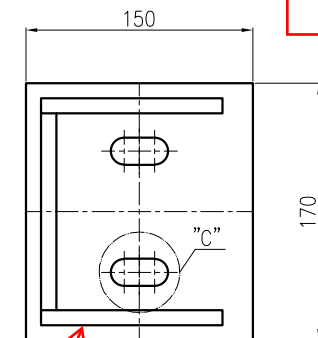
SCALE 1:10



DETAIL OF SADDLE
FOR E-200B&D
SCALE 1:10



FIXED BASE PLATE
SCALE 1:5



SLIDING BASE PLATE

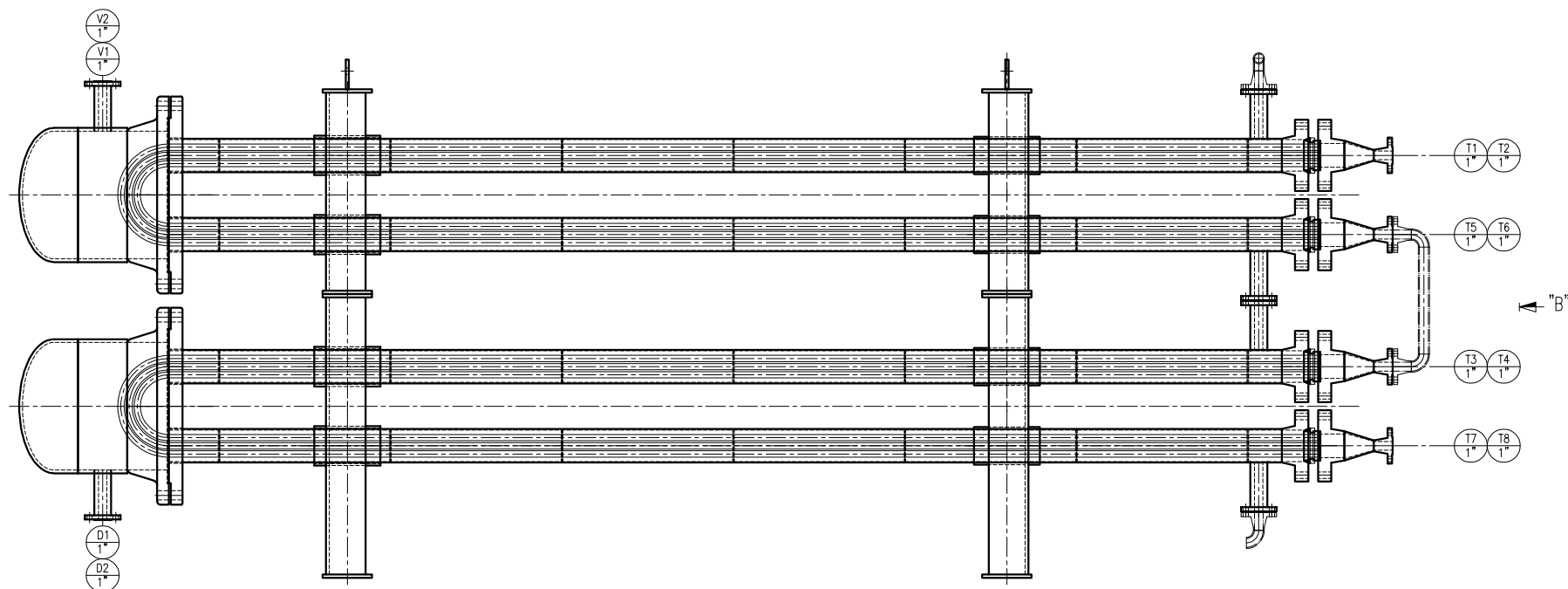
SCALE 1:5

T.L.	TANGENT LINE	N	NORMALIZED
B.L.	BASE LINE	P.W.H.T.	POST WELD HEAT TREATMENT
C.O.G.	CENTER OF GRAVITY	R.F.	RAISED FACE
EL.	ELEVATION	S.R.	STRESS RELIEVE
F.B.	FLAT BAR	S.F.	STRAIGHT FLANGE
L.L.H.	LIQUID LEVEL HIGH	T.L.	TANGENT LINE
L.L.H.H.	LIQUID LEVEL HIGH HIGH	T.O.G.	TOP OF GROUTING
L.L.L.	LIQUID LEVEL LOW	W.N.	WELDING NECK
L.L.L.L.	LIQUID LEVEL LOW LOW	L.W.L.	LONGITUDINAL WELDING LINE
N.L.L.	NORMAL LIQUID LEVEL	C.W.L.	CIRCUMFERENTIAL WELDING LINE
M.A.W.P.	MAX. ALLOWABLE WORKING PRESSURE	L.W.N.	LONG WELDING NECK
M.D.M.T.	MIN. DESIGN METAL TEMP.	R.T.	RADIOGRAPHY TEST
D.P.	DESIGN PRESSURE	INT.	INTERNAL
J.E.	JOINT EFFICIENCY	EXT.	EXTERNAL
L.	LIQUID	H.P.P.	HIGHEST POINT OF PAVING
V.	VAPOR	THK.	THICKNESS
DWG.	DRAWING	N.A.	NOT APPLICABLE
R.L.	REFERENCE LINE	-	-

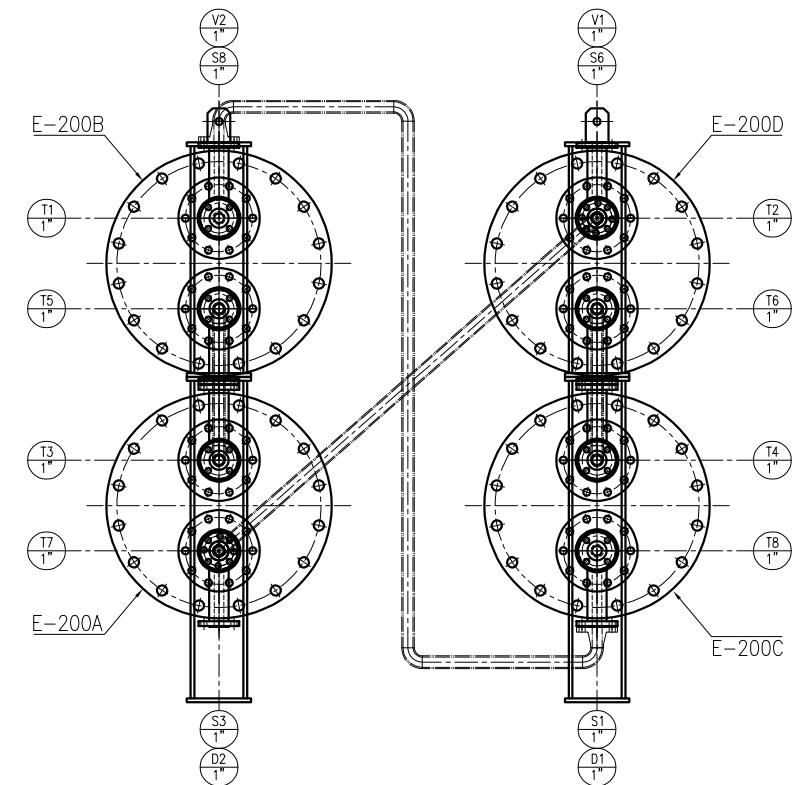
NOZZLE TABLE											
MARK	FLUID / DESCRIPTION	QTY.	SIZE	RATING	TYPE	FACING	SCH./ THK.	REINFORCE PAD		PROJECTION (NOTE 2)	REMARK
								DIA.	THK.		
T1~T4	RICH TEG INLET	4	1"	150#	W.N.	R.F.	STD/-	-	-	SEE DWG.	-
T5~T8	RICH TEG OUTLET	4	1"	150#	W.N.	R.F.	STD/-	-	-	SEE DWG.	-
S1~S4	LEAN TEG INLET	4	1"	150#	L.W.N.	R.F.	-/12.8	-	-	200	-
S5~S8	LEAN TEG OUTLET	4	1"	150#	L.W.N.	R.F.	-/12.8	-	-	200	-
V1,V2	VENT	2	1"	150#	L.W.N.	R.F.	-/12.8	-	-	345	-
D1,D2	DRAIN	2	1"	150#	L.W.N.	R.F.	-/12.8	-	-	345	-

[illegible]

سایز نازل و اسم آن می بایست با مدرک PID تطابق داشته باشد.
با توجه به عدم همایش اسم و سایز نازل در PID این مورد قابل
بررسی نمی باشد میبایست اصلاح گردد.



ASSEMBLY VIEW
SCALE 1:20



ASSEMBLY VIEW
SCALE 1:20

VIEW "B"

SCALE 1:20

[illegible]